

TRENCHMASTER®

Revised

12/2009

Owners - Operators Manual

FEATURED MODEL #'s

BEDEDGER BANTAM

B565H

B580H

B590H

BANTAM MOLE

B765H

B780H

B790H



 **BROWN**
PRODUCTS, INC.™



BedEdger Bantam/Bantam Mole Manual

INTRODUCTION

You are now the owner of a Brown TRENCHMASTER®. The term TRENCHMASTER® is used throughout this manual to include the following products: B565H, B580H and B590H BedEdger Bantam, and the B765H, B780H, B790H Bantam Mole. The TRENCHMASTERS® are very versatile trenchers which, when properly equipped, will trench in almost any soil condition. The TRENCHMASTER® is an inexpensive alternative to the much heavier, more bulky and less maneuverable trenchers on the market.

This TRENCHMASTER® is manufactured by Brown Products, Inc. which has been developing and producing quality farm equipment, right-of-way maintenance equipment, and outdoor power equipment since 1943. Brown Products is proud of the reputation it has earned for quality products and customer service.

If you have any questions or problems with your TRENCHMASTER®, please contact your dealer or distributor. If they cannot answer your questions or solve your problem, feel free to call.



376 County Road 563 • Midland City, AL 36350
(800)897-3726 • Fax: (334) 983-1606
<http://www.brownproducts.com>

TABLE OF CONTENTS

| | |
|--|----|
| Warranty..... | 4 |
| Supplemental Warranty..... | 5 |
| Owner Registration..... | 7 |
| Safety..... | 9 |
| Assembly Instructions..... | 11 |
| Operating Instructions..... | 12 |
| Scheduled Maintenance..... | 14 |
| Troubleshooting..... | 15 |
| Parts Lists & Drawings: | |
| • BedEdger Bantam..... | 16 |
| • Bantam Mole Kits | 18 |
| • Bantam Mole..... | 20 |
| Installation & Operation Instructions: | |
| • Bantam Mole..... | 22 |
| • Bantam Mole Kit..... | 22 |

WARRANTY STATEMENT

STATEMENT OF POLICY

In accordance with our established policy of constant improvement, we reserve the right to amend these specifications at any time without notice.

ENGINE WARRANTY

Warranty of all engines and engine parts is the sole responsibility of the particular engine manufacturer. See engine warranty in the engine manual. Engine problems must be checked and approved for warranty by an authorized engine manufacturer's service center. Brown Products, Inc. is not an authorized service center for any engine manufacturer and accepts no responsibility for engine warranties, either express or implied.

WARRANTY BY MANUFACTURER

Dealer/distributor understands and agrees that the manufacturer extends only the following warranty to its customers. In the event dealer/distributor extends any additional warranty such as enlarging the scope or period of warranty or undertaking a warranty of fitness for any particular purpose or obligation not encompassed in manufacturer's warranty, dealer/distributor shall be solely responsible therefore and shall have no recourse against manufacturer with respect thereto.

WARRANTY

LIMITED WARRANTY

Brown Products, Inc. hereby warrants that Brown's TRENCHMASTER® products will be free from defects in material and workmanship under normal use according to the provisions and limitations herein set forth. All parts, specifically EXCLUDING expendable "wear" parts, that become unserviceable within one year (12 months) from date of purchase, shall be repaired or replaced at Brown's option – at no cost to purchaser.

LIMITATIONS

The obligation of Brown for breach of warrant shall be limited to products manufactured by Brown (1) that are installed, operated and maintained according to Brown's instruction furnished and/or available to the purchaser upon request, (2) that are installed according to all other applicable Federal, State and local codes or regulations, and (3) that the purchaser substantiates were defective in material and workmanship notwithstanding that they were properly installed and correctly maintained as set forth and were not abused or misused. The obligation of Brown shall be limited to replacing or repairing the defective product, at the option of Brown. Brown shall not be responsible for any labor or cost of removal or re-installment of its products and shall not be liable for transportation costs to and from its plant in Midland City, Alabama. Use of parts for modification or repair of TRENCHMASTERS® or any component part thereof not authorized or manufactured by Brown specifically for the TRENCHMASTERS® shall void this warranty. This warranty shall not apply to any damage to or defect in TRENCHMASTERS® that is directly or indirectly caused by (1) FORCE MAJEURE, Act of God or other accident not related to an inherent product defect, of (2) abuse, misuse or neglect of the TRENCHMASTER®, including any damage caused by improper assembly, installation, service maintenance or faulty instruction of the purchaser. Other than as expressly set forth hereinabove, Brown makes no other warranty, express or implied, with respect to the TRENCHMASTER®, including but not limited to any warranty of merchantability or fitness for a particular purpose. And in no event shall Brown be responsible for any incidental or consequential damages of any nature suffered by purchaser or any other person or entity caused in whole or in part by the TRENCHMASTER®. Any person or entity to whom this warranty extends and who claims breach of warranty against Brown must bring suit thereon within one year from the date of occurrence of such breach of warranty or be forever barred from any and all legal or other remedies for such breach of warranty. Brown is not responsible for and hereby disclaims any undertaking, representation or warranty made by any dealer, distributor or other person that is inconsistent with or in any way more expansive than the provisions of this limited warranty. This warranty grants specific legal rights and shall be read in conformity with applicable state law. In some jurisdictions, the applicable law mandates warranty provisions that provide greater rights than those provided for herein. In such case, this limited warranty shall be read to include such mandated provisions; and any provision herein that is prohibited or unenforceable in any such jurisdiction shall, as to such jurisdiction, be ineffective to the extent of such prohibition or unenforceability without invalidating the remaining provisions and without affecting the validity or enforceability of such provisions in any other jurisdiction(s).

SUPPLEMENTAL WARRANTY STATEMENT B565H, B580H & B590H BEDEDGER BANTAM B765H, B780H & B790H BANTAM MOLE

- Operating the BedEdger Bantam with an unbalanced rotor creates destructive vibrations and operations should cease immediately if this occurs. Determine what is causing the unbalanced issue and correct by removing debris buildup on the rotor or replace with a new balanced rotor. One missing rotor tooth will be cause for changing the rotor.
- **Use of any part not manufactured by Brown Products, Inc. will void all warrantees. The use of a re-manufactured rotor will also void the warranty.**

This page intentionally left blank.

TrenchMaster® Owner's Warranty Card

Name _____ Model _____
Address _____ Serial Number _____
City/State _____ Date Purchased _____
Phone _____ TrenchMaster® Dealer _____
E-Mail _____

IMPORTANT: TO PLACE THE BROWN WARRANTY INTO EFFECT, THIS WARRANTY CARD MUST BE COMPLETED AND MAILED WITHIN 30 DAYS AFTER RECEIVING THIS EQUIPMENT.



For additional information and inquiries, please contact: _____



376 County Road 563 • Midland City, AL 36350
Phone: (800) 897-3726 • Fax: (334) 983-1606
<http://www.brownproducts.com>

This page intentionally left blank.



WARNING

SAFETY PRECAUTIONS



WARNING: Engine exhaust from this product contains chemicals known, in certain quantities, to cause cancer, birth defects, or other reproductive harm.

DO NOT assemble TRENCHMASTER® before reading assembly instructions.

DO NOT start TRENCHMASTER® before reading operating instructions.

DO NOT modify TRENCHMASTER® in any way.

DO NOT operate without all shields in place.

DO NOT operate without eye protection. Goggles are provided with each TRENCHMASTER®.

DO NOT lift trencher off the ground until engine is switched off and rotor has stopped.

DO NOT drop the TRENCHMASTER® to the ground from truck tailgate or bed of trailer.

DO NOT operate unless safety area is clear of people, animals, vehicles, and glassed areas that may be damaged by possible projectiles. (See Soil & Debris Exhaust chart showing area of possible projectiles, pg 10.)

DO NOT begin operation until all underground pipes, electrical and communications lines and sprinkler lines have been located and marked. The utility companies will be glad to provide information on their facilities. A ruptured gas line or cut electrical cable may cause injury or death.

DO NOT place hands or feet near belts or rotor mechanisms while engine is running.

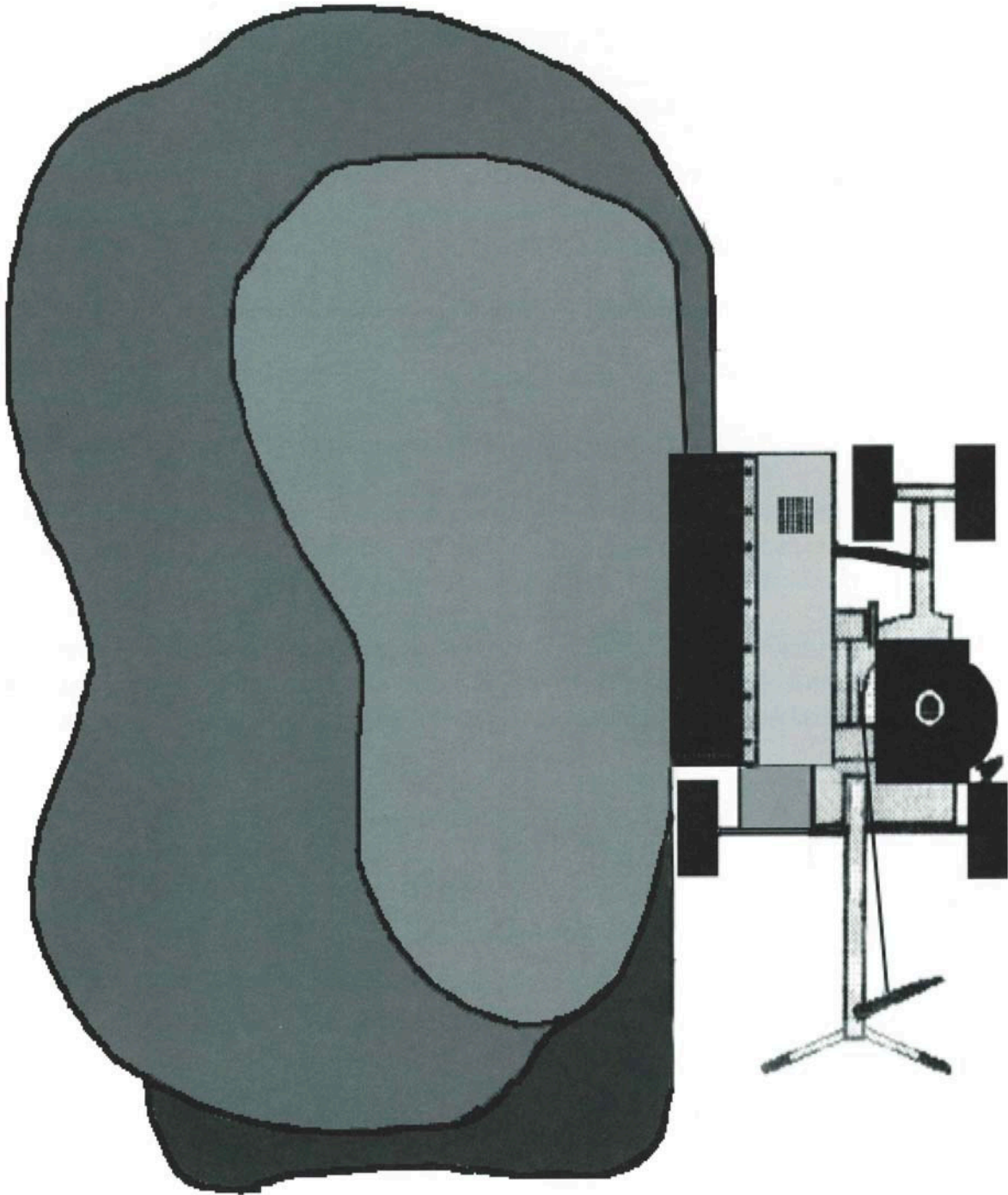
DO NOT operate TRENCHMASTER® without wearing proper shoes (high top leather shoes or boots are recommended).

DO NOT allow bystanders or spectators to be within 50 feet of TRENCHMASTER® while engine is running. (See Soil & Debris Exhaust chart showing areas of possible projectiles, pg 10.)

DO NOT operate TRENCHMASTER® until all surface obstructions have been cleared from area. All rocks and debris should be removed from area.

DO NOT disconnect oil alert on engines. To do so may void your engine warranty.

TRENCHMASTER®
SOIL & DEBRIS EXHAUST CHART



ASSEMBLY INSTRUCTIONS

Brown BedEdger Bantam™

1. Install Handlebar using the four 5/16" X 1" carriage bolts located in hardware bag.
2. Remove zip tie on right side of handlebar holding clevis end of clutch cable, leaving the two zip ties on the left side of the handlebar securing the clutch cable.
3. Remove the dust cap and first nut on the clevis end bulk head fitting.
4. On Models B565H and B765H only, insert clutch cable conduit bulk head fitting into slotted hole of cable bracket that is welded to the left side of the frame and reinstall nut so that there is an equal amount of threads of the bulk head fitting on each side of the mounting bracket. On Models B580H, B590H, B780H, and B790H, insert the cable conduit bulkhead fitting into the slotted hole of Bracket (Part # 470-260, Item # 44) that is bolted to the bracket that is welded to the left side of frame.
5. Attach cable clevis to idler arm (Part # 991-05, Item # 9) and install cotter pin in clevis pin.
6. With the clutch lever (Part # 450-259, Item # 3) in the released position, adjust the clevis end conduit bulk head fitting until the belt idler pulley (Part # 12-22-2A, Item # 10) is approximately 1/8"-3/16" above the drive belts.
7. Now engage the clutch lever and hold. Then release the clutch lever and recheck the distance between the idler pulley and drive belts. Readjust the bulk head fitting, if needed, to attain 1/8"-3/16" distance between idler pulley and drive belts.
8. Assure the bulkhead nuts are tight and replace dust cap.
9. Due to belt stretch, after one hour of operation, recheck idler pulley to belt distance. If distance is greater than 3/16", adjust bulk head fitting until 1/8"-3/16" is attained.
10. As belts wear and stretch, after many hours of operation, the top bulk head fitting can be adjusted in order to maintain proper idler pulley to belt distance.
11. With clutch lever engaged, assure that the lever is parallel to handlebar (bend if needed) and releases properly and does not drag or hang up on the handlebar tube. If lever does drag or hang up, use a screwdriver to open up the right side flange of the lever that is hanging up. Operate the clutch lever several times to assure that it returns to neutral position quickly when released.
12. On all Bantam Mole models (R795H, R780H, & R790H) install the wire spool brackets (Part #480-257) and the spool holder (Part #480-009).
13. Add gasoline and oil before operating your Bantam.

OPERATING INSTRUCTIONS

Brown BedEdger Bantam™

BEFORE STARTING ENGINE

1. Check machine.
 - a. Read and be familiar with equipment operating instructions.
 - b. Be sure you have the proper rotor for trench size and soil conditions.
 - c. Check rotor retaining nut for tightness.
 - d. Be sure belts and pulleys are properly aligned and adjusted.
 - e. Check hood mounting bolts and nuts for tightness.
 - f. Check set screws in pulleys and lock collars for tightness.
 - g. Check all other nuts and bolts for tightness.
 - h. Check Clutch Cable tension. Tension is adjusted using the turnbuckle so that the clutch spring stretches approximately $\frac{3}{4}$ " to 1" when clutch is engaged.

2. Check machine



CAUTION: NEW ENGINES SHIPPED WITH MACHINES ARE NOT SERVICED. ADD OIL TO CRANKCASE BEFORE STARTING.



WARNING: Gasoline is extremely flammable and highly explosive under certain conditions. Always stop the engine and do not refill tank while you are smoking or near open flame or sparks.



WARNING: Never start or run the engine while in an area where fumes may collect. Carbon Monoxide from the exhaust is an odorless and deadly gas which must have adequate space or ventilation to allow rapid dispersal.

- a. Be familiar with manufacturer's operating and safety instructions for engine.
 - b. Check oil level with dipstick and add if necessary. Do not overfill.
 - c. Check air filter and clean if necessary. Clean frequently if operating in dusty conditions.
 - d. Use only clean fuel. Unleaded fuel is recommended in all engines.
 - e. Be sure muffler and exhaust deflector are installed, are in proper position, and are in good operating condition. (Deflector should exhaust to the left, away from the air intake.)
3. Start engine
 - a. Be sure clutch lever is in disengaged position and no tension is on drive belts.
 - b. Turn ignition switch to "ON" position.
 - c. Turn fuel on.
 - d. Close choke if engine is cold.
 - e. Pull start cord rapidly.

Starting Engine Continued

- f. When engine starts, gradually open choke and let engine warm up at about ¼ speed.



WARNING: Do not operate machine without rotor hood installed and secure.



WARNING: Do not operate the machine within a 50' radius of people, animals, automobiles or glassed areas which might be damaged by projectiles.



WARNING: Operator must wear eye protection when operating the TRENCHMASTER®.



WARNING: Operator must locate and stay clear of all underground gas, electric, water and communications lines before starting trenching operation.

CALIFORNIA PROPOSITION 65 WARNING: Engine exhaust from this product contains chemicals known to the State of California to cause cancer, birth defects, or other reproductive harm.

4. Operations

- a. **To start trenching, set throttle full open.** Before engaging the clutch lever, the handle must be pushed toward the ground enough to allow the rotor to turn without hitting the ground. Engage clutch and when rotor attains operating speed, the handle should be raised slowly so that the rotor engages the ground and gradually digs to trench depth.
- b. When trench depth is achieved, the operator should **pull the machine to the rear** at such a speed that the trencher will dig without overloading the engine.



WARNING: Starting the trench is the most critical time for dangerous flying projectiles. Be especially cautious by policing the area for rocks or other possible projectiles and ensure the area is completely clear of people, animals, vehicles, etc. that may be damaged by projectiles.

-
- c. When trenching, **if trencher strikes an underground object, stop immediately** to determine what the object is. Investigation should be done visually since touching an exposed electric wire could be fatal.
- d. When trencher strikes a rock, either the trench or rock should be moved.
- e. When digging in extremely hard clay or other difficult soils, it may sometimes be necessary to use an oscillating action by applying and releasing pressure on handlebar, front to rear, alternately.

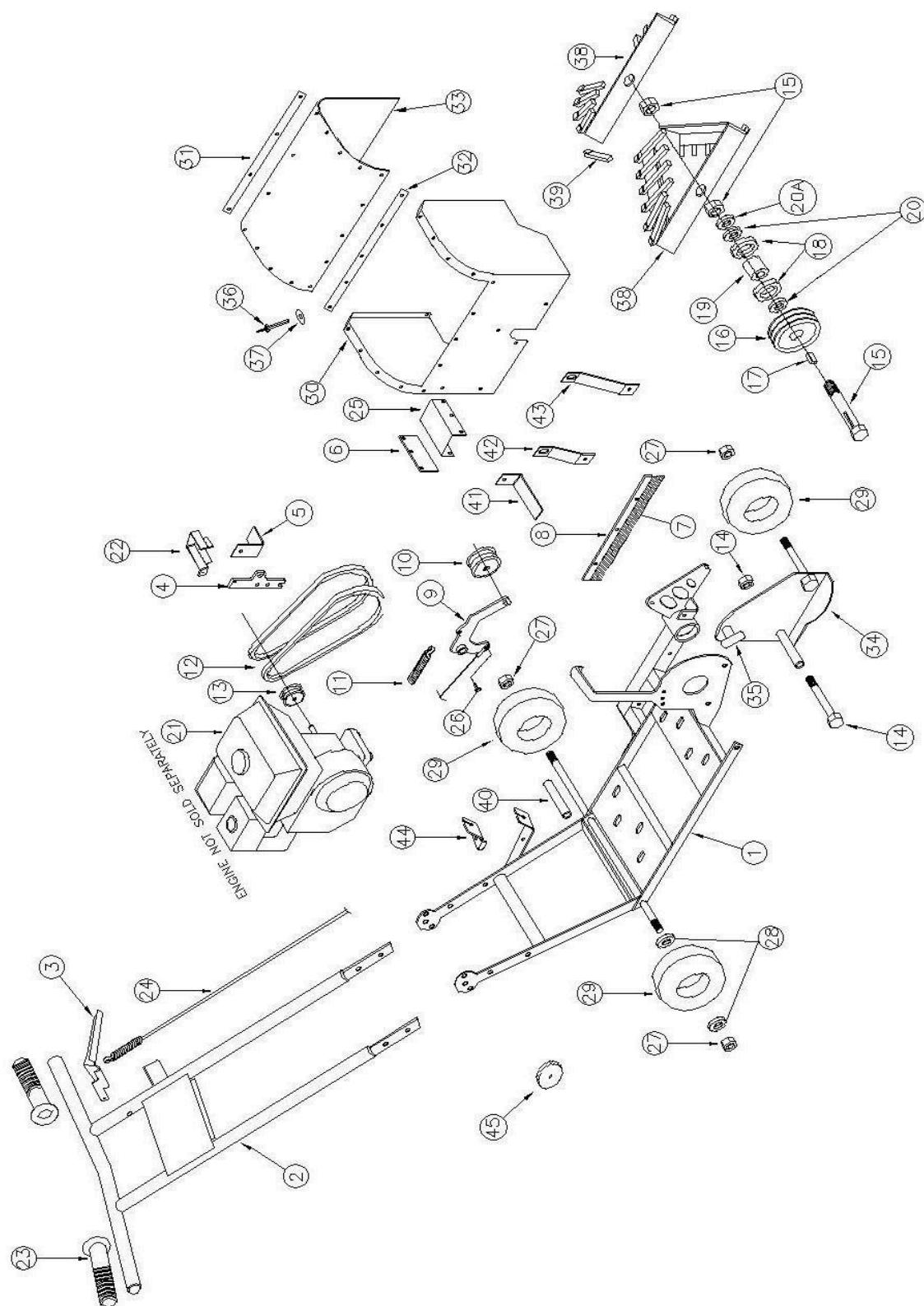
SCHEDULED MAINTENANCE

Good maintenance practices are critical if you are to enjoy trouble free operation and long life from your Brown TRENCHMASTER®. Most required maintenance procedures are shown in this section. However, other common sense maintenance practices such as cleanliness and storage must be followed.

1. See Manufacturers operating and maintenance instructions for engine maintenance procedures.
2. Check all bolts and nuts for tightness before operation and periodically thereafter.
3. Check all set screws in belt pulleys and bearing lock collars before operation and periodically thereafter. If set screws are vibrating loose, Locktite's Threadlocker #242 should be applied to the threads and the set screw retightened.
4. Check drive belts for proper tension before operation. Adjust if necessary. Adjust belt tension using the turnbuckle to ensure the spring stretches approximately $\frac{3}{4}$ " to 1". Keep belt free of dirt and grease at all times.
5. Rotor points must be checked for wear before operation and periodically thereafter. Check at least every 200 feet initially. When working in difficult soil conditions, they should be checked more often. In good soil conditions, they may be checked less often but never less than each 500 feet of trenching.
6. Check rotor bearings for wear every 2000 feet. This is done by lifting the front of the machine off the ground so that the rotor may be turned by hand. Then grasp the end of the rotor firmly and try to move it from side to side. If there is more than $\frac{1}{4}$ " movement from side to side, the bearings must be replaced.
7. Check the idler pulley for wear before operation and replace if necessary.
8. Periodically check the idler arm for lateral movement. If the pivot bolt is badly worn, or the bolt is loose, the idler arm may have enough lateral movement to cause the belts to come off the pulley. The pivot belt should be tight enough to prevent lateral movement, but not so tight that it restricts free pivoting of the idler arm.

TROUBLESHOOTING

| PROBLEM | POSSIBLE CAUSE | SOLUTION |
|--------------------------|-----------------------------------|---|
| Burning Belts | Improper tension on belts | Adjust belt tension using the turnbuckle on the clutch cable. Spring should stretch approximately $\frac{3}{4}$ " to 1" when clutch lever is fully engaged. |
| | Pulleys not aligned | Align pulleys |
| | Pulleys worn excessively | Replace pulleys |
| | Pulleys broken or burrs on pulley | Replace pulleys |
| | Wrong type belt | Replace with Kevlar belts |
| Excessive vibration | Rotor bearings worn excessively | Replace bearings |
| | Rotor points broken or missing | Replace points or rotor |
| | Rotor bent | Replace rotor |
| Rotor striking | Rotor too close to hood | Loosen eccentric lock collars on spindle and move rotor away from hood. CAUTION: Use thread lock on all set screws and tighten securely. |
| | Rotor bent | Replace rotor |
| Pulleys coming off shaft | Pulley set screw not tight | Remove set screws and apply thread lock to set screws, then tighten very firmly. |

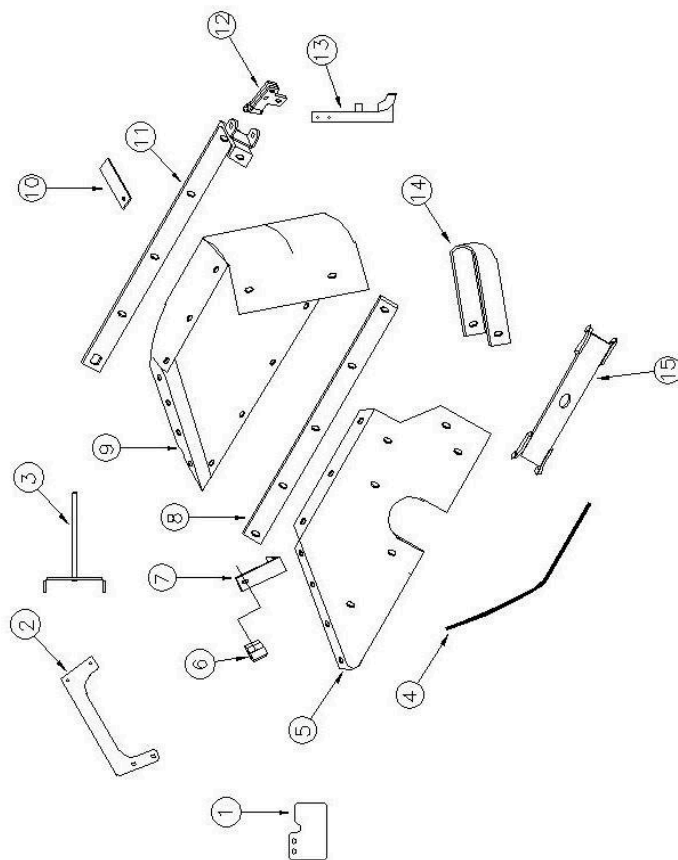


MODELS B565H, B580H & B590H BED BANTAM

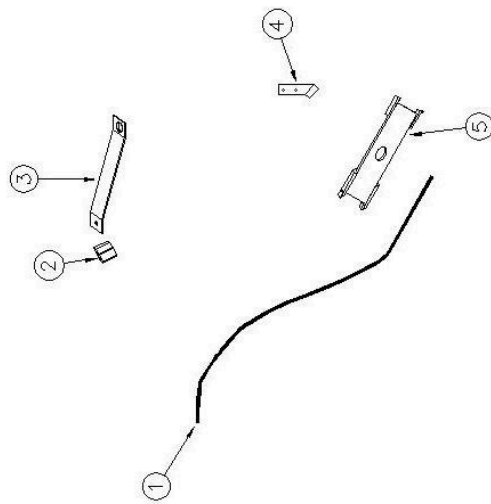
Bed Bantam Models B565H, B580H, & B590H

Parts List

| Ref # | Part # | Description | # Req'd |
|-------|-----------|--|----------|
| 1 | 470-022 | Frame | 1 |
| 2 | 470-024 | Handlebar | 1 |
| 3 | 450-259 | Clutch Lever, Over Center | 1 |
| 4 | 450-251 | Bracket, Idler Arm | 1 |
| 5 | 450-024 | Stop, Belt, Engine Pulley--Model B565H Only | 1 |
| 6 | 470-755 | Flap, Dirt Deflector | 1 |
| 7 | 450-752 | Brush | 1 |
| 8 | 450-503 | Channel, Brush | 1 |
| 9 | 991-05 | Arm, Idler | 1 |
| 10 | 12-22-2A | Pulley, Double Idler | 1 |
| 11 | 991-06 | Spring, Idler Arm Return | 1 |
| 12 | 450-767 | Belt, 31" Kevlar, Model B565H Only | 2 |
| 12 | 470-754 | Belt, Kevlar, Models B580H & B590H 1/2"X35"/A33K/4L350K | 2 |
| 13 | 701-02-2 | Pulley, Engine | 1 |
| 14 | HC58C80Z | Bolt, Front Axle, 1/2"-13 X 5 w/Nylok Nut | 1 |
| 15 | 450-502 | Spindle, Rotor w/ 2 Nuts | 1 |
| 16 | 450-768 | Pulley, Double, Rotor, 4.5" O.D. | 1 |
| 17 | 450-758 | Key, 3/16" x 3/16" x 3/4" Long, Rotor Pulley | 1 |
| 18 | 450-751 | Bearing, Rotor | 2 |
| 19 | 450-004 | Bearing, Spacer | 1 |
| 20 | 450-765 | Washer, 3/4" SAE Rotor Spindle (against each bearing) | 2 |
| 20A | 450-766 | Flatwasher, 3/4" (against back of rotor) | 1 |
| 21 | No Part # | Engine, Honda--NOT SOLD SEPARATELY | 1 |
| 22 | 991-08 | Stop, Belt, Models B580H & B590H | 1 |
| 23 | 701-25 | Grip, Handle | 2 |
| 24 | 470-752 | Cable, Clutch | 1 |
| 25 | 470-257 | Deflector, Dirt, Rear | 1 |
| 26 | 12-09 | Pin, Clevis w/Cotter Pin | 1 |
| 27 | 701-06A | Nut, 5/8" Nylon Lock | 3 |
| 28 | 702-27B | Bearing, 5/8" Wheel (2 per wheel) | 6 |
| 29 | 702-50C | Wheel, Pneumatic w/ 5/8" Bearing | 3 |
| 30 | 470-026 | Hood | 1 |
| 31 | 470-011 | Strap, Top, Hood Drape | 1 |
| 32 | 470-021 | Strap, Rear, Hood Drape | 1 |
| 33 | 470-751 | Drape, Hood | 1 |
| 34 | 470-025 | Front Wheel Mount | 1 |
| 35 | 470-753 | Pop Pin, Front Wheel Adjustment | 1 |
| 36 | 450-756 | Rivet, Hood Drape | 12 |
| 37 | 450-757 | Washer, Rivet Back-up | 8 |
| 38 | 470-019 | Rotor | 1 |
| 38 | 450-100 | Rotor, 4" ReDefining | Optional |
| 39 | 450-507 | Point, Rotor (2 1/4" straight) | N/A |
| 39 | 12-85 | Point, Rotor (3 1/2" straight) | N/A |
| 40 | 470-008 | Spacer, Left Rear Wheel | 1 |
| 41 | 450-025 | Stop, Belt, Rotor Pulley, --Model B565H Only | 1 |
| 42 | 470-010 | Brace, Hood, Rear | 1 |
| 43 | 470-018 | Brace, Hood, Front | 1 |
| 44 | 470-260 | Bracket, Cable, Handle Bar, Models B580H & B590H Only | 1 |
| 45 | 470-756 | Kit, Easy Fold Handle (Kit consist of 4 # 460-503 Star Knobs | 1 |
| N.S. | 470-757 | Decal, BedEdger Bantam. | 2 |
| N.S. | 470-756 | Washer, Rivet Back-up, 1/2" O.D. | 4 |



480-249 KIT CONVERTS A
BEDEDGER BANTAM TO A LOW
VOLTAGE BANTAM MOLE



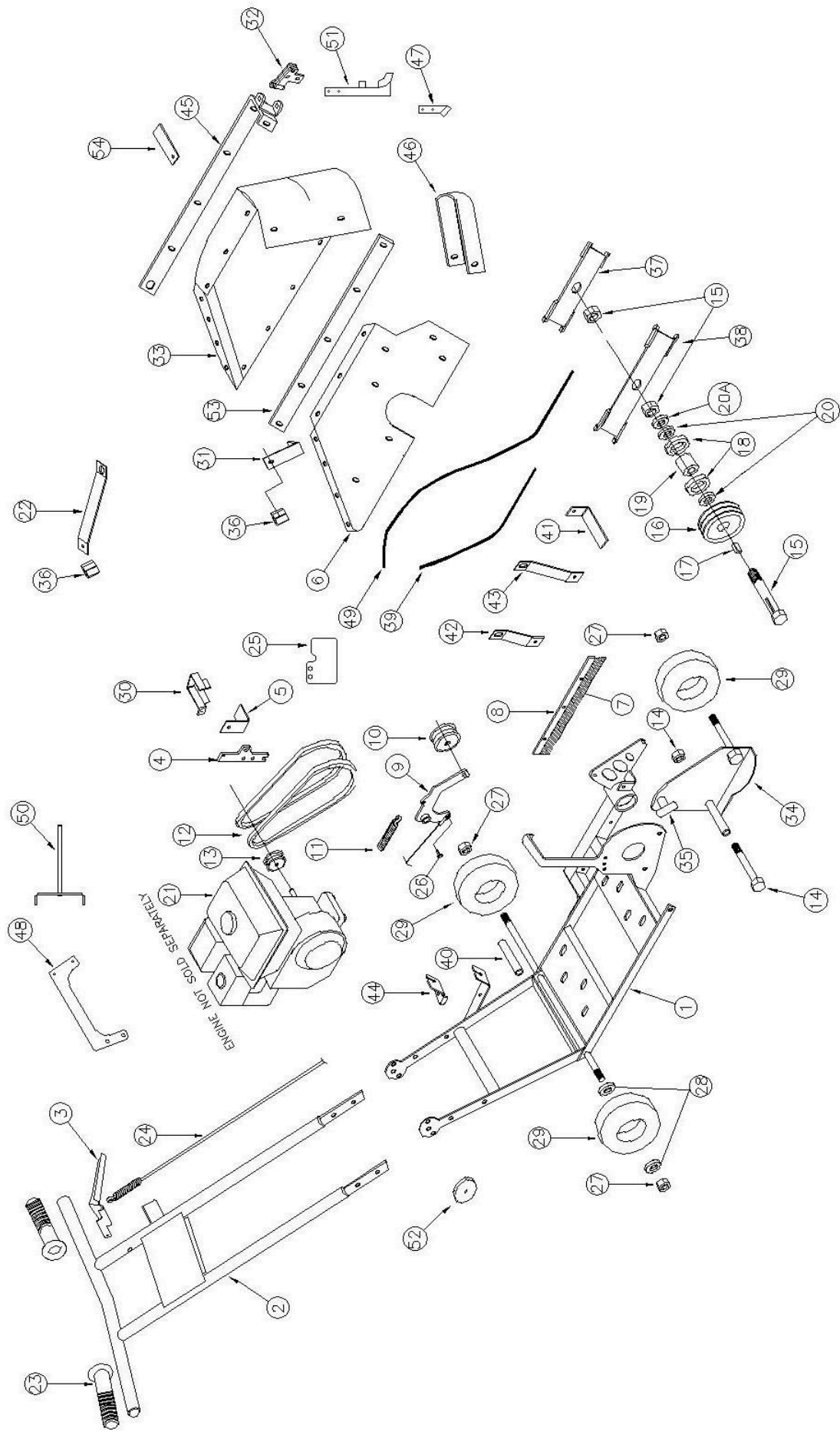
480-250 KIT CONVERTS A
LOW VOLTAGE BANTAM MOLE
FOR INVISIBLE DOG FENCE
INSTALLATION @ 3" DEPTH

**Parts List for Bantam Mole Kit # 480-250 to Convert
Bantam Mole Models B765H, B780H, & B790H to Invisible
Dog Fence @ 3" Depth**

| Ref # | Part # | Description | # Req'd |
|-------|---------|--|---------|
| 1 | 480-019 | Tube, PEX, 1/4" I.D., Invisible Fence | 1 |
| 2 | 460-504 | Clip, 12 mm, PEX Tubing Guide | 1 |
| 3 | 480-007 | Bracket, Rear, PEX Tubing, Invisible Fence, 3" Depth | 1 |
| 4 | 480-022 | Ground Rod, Invisible Fence, 3" Depth | 1 |
| 5 | 480-011 | Rotor, 3" Depth, Invisible Fence | 1 |

**Parts List for Bantam Mole Kit # 480-249 To Convert
BedEdger Bantam Models B565H, B580H, & B590H
To a Low Voltage Bantam Mole**

| Ref # | Part # | Description | # Req'd |
|-------|---------|---|---------|
| 1 | 480-258 | Deflector, Dirt, Rear | 1 |
| 2 | 480-257 | Bracket, Wire Spool Mount | 2 |
| 3 | 480-009 | Spool Holder | 1 |
| 4 | 480-015 | Tube, PEX, 1/2" I.D., Low Voltage Wire | 1 |
| 5 | 480-251 | Hood, Back Plate | 1 |
| 6 | 460-504 | Clip, 12 mm, PEX Tubing Guide | 1 |
| 7 | 480-014 | Bracket, Front, PEX Tube Mount, All Models | 1 |
| 8 | 480-003 | Strap, Flap, Inside | 1 |
| 9 | 480-751 | Drape, Hood | 1 |
| 10 | 480-004 | Strap, Flap Support, Inside | 1 |
| 11 | 480-018 | Brace, Outside, Hood Flap | 1 |
| 12 | 480-006 | Swivel, Ground Rod | 1 |
| 13 | 480-013 | Ground Rod, Low Voltage Wire, 7" & 5-1/2" Depth | 1 |
| 14 | 480-002 | Bracket, Drape Retainer | 1 |
| 15 | 480-010 | Rotor, 7" & 5-1/2" Depth, Low Voltage Wire | 1 |



MODELS B765H, B780H & B790H BANTAM MOLE

Bantam Mole Models B765H, B780H, & B790H Parts List

| Ref # | Part # | Description | # Req'd |
|-------|-----------|--|---------|
| 1 | 470-022 | Frame | 1 |
| 2 | 470-024 | Handlebar | 1 |
| 3 | 450-259 | Clutch Lever, Over Center | 1 |
| 4 | 450-251 | Bracket, Idler Arm | 1 |
| 5 | 450-024 | Stop, Belt, Engine Pulley--Model B765H Only | 1 |
| 6 | 480-251 | Hood, Back Plate | 1 |
| 7 | 450-752 | Brush | 1 |
| 8 | 450-503 | Channel, Brush | 1 |
| 9 | 991-05 | Arm, Idler | 1 |
| 10 | 12-22-2A | Pulley, Double Idler | 1 |
| 11 | 991-06 | Spring, Idler Arm Return | 1 |
| 12 | 450-767 | Belt, 31" Kevlar, Model B765H Only | 2 |
| 12 | 470-754 | Belt, Kevlar, Models B780H & B790H 1/2"X35"/A33K/4L350K | 2 |
| 13 | 701-02-2 | Pulley, Engine | 1 |
| 14 | HC58C80Z | Bolt, Front Axle, 1/2"-13 X 5 w/Nylok Nut | 1 |
| 15 | 450-502-2 | Spindle, Rotor w/ 2 Nuts | 1 |
| 16 | 450-768 | Pulley, Double, Rotor, 4.5" O.D. | 1 |
| 17 | 450-758 | Key, 3/16" x 3/16" x 3/4" Long, Rotor Pulley | 1 |
| 18 | 450-751 | Bearing, Rotor | 2 |
| 19 | 450-004 | Bearing, Spacer | 1 |
| 20 | 450-765 | Washer, 3/4" SAE Rotor Spindle (against each bearing) | 2 |
| 20A | 450-766 | Flatwasher, 3/4" (against back of rotor) | 1 |
| 21 | No Part # | Engine, Honda--NOT SOLD SEPARATELY | 1 |
| 22 | 480-007 | Bracket, Rear, PEX Tubing, Invisible Fence, 3" Depth | 1 |
| 23 | 701-25 | Grip, Handle | 2 |
| 24 | 470-752 | Cable, Clutch | 1 |
| 25 | 480-258 | Deflector, Dirt, Rear | 1 |
| 26 | 12-09 | Pin, Clevis w/Cotter Pin | 1 |
| 27 | 701-06A | Nut, 5/8" Nylon Lock | 3 |
| 28 | 702-27B | Bearing, 5/8" Wheel (2 per wheel) | 6 |
| 29 | 702-50C | Wheel, Pneumatic w/ 5/8" Bearing | 3 |
| 30 | 991-08 | Stop, Belt, Models B780H & B790H | 1 |
| 31 | 480-014 | Bracket, Front, PEX Tube Mount, All Models | 1 |
| 32 | 480-006 | Swivel, Ground Rod | 1 |
| 33 | 480-751 | Drape, Hood | 1 |
| 34 | 470-025 | Front Wheel Mount | 1 |
| 35 | 470-753 | Pop Pin, Front Wheel Adjustment | 1 |
| 36 | 460-504 | Clip, 12 mm, PEX Tubing Guide | 2 |
| 37 | 480-011 | Rotor, 3" Depth, Invisible Fence | 1 |
| 38 | 480-010 | Rotor, 7" & 5-1/2" Depth, Low Voltage Wire | 1 |
| 39 | 480-019 | Tube, PEX, 1/4" I.D., Invisible Fence | 1 |
| 40 | 470-008 | Spacer, Left Rear Wheel | 1 |
| 41 | 450-025 | Stop, Belt, Rotor Pulley, --Model B765H Only | 1 |
| 42 | 470-010 | Brace, Hood, Rear | 1 |
| 43 | 470-018 | Brace, Hood, Front | 1 |
| 44 | 470-260 | Bracket, Cable, Handle Bar, Models B780H & B790H Only | 1 |
| 45 | 480-018 | Brace, Outside, Hood Flap | 1 |
| 46 | 480-002 | Bracket, Drape Retainer | 1 |
| 47 | 480-022 | Ground Rod, Invisible Fence, 3" Depth | 1 |
| 48 | 480-257 | Bracket, Wire Spool Mount | 1 |
| 49 | 480-015 | Tube, PEX, 1/2" I.D., Low Voltage Wire | 2 |
| 50 | 480-009 | Spool Holder | 1 |
| 51 | 480-013 | Ground Rod, Low Voltage Wire, 7" & 5-1/2" Depth | 1 |
| 52 | 470-756 | Kit, Easy Fold Handle (Kit consist of 4 # 460-503 Star Knobs | 1 |
| 53 | 480-003 | Strap, Flap, Inside | 1 |
| 54 | 480-004 | Strap, Flap Support, Inside | 1 |

Bantam Mole Operating Instructions

1. Read and understand General Operating Instructions on pages 11 & 12.
2. The front wheel of the Bantam Mole controls the depth of the rotor. There are actually three depth positions on the Bantam Mole. However, you only use the hole closest to the engine and the center hole for low voltage wire installation. The Rotor for low voltage wire installation is part number 480-010 and the Ground Rod is part number 480-013. The Bantam Mole is shipped with this Rotor and Ground Rod. Using this Rotor and Ground Rod, the hole closest to the engine is 7" deep and the center hole is 5-1/2 inches deep. For invisible fence wire at 3" deep, you use Rotor number 480-011, Ground Rod # 480-022, PEX Tubing # 480-019, Rear PEX Tubing Bracket # 480-007, and one Clip, 12mm PEX Tubing Guide # 460-504. The depth position for invisible fence wire at 3" is the hole closest to the engine. The 3" Rotor, Ground Rod, PEX Tubing, and Rear PEX Tubing Bracket with Clip must be ordered as separate items in order to install invisible fence wire at 3" deep.
3. Load Wire Spool Mount with spooled wire and thread wire through PEX tubing (item #49) until it protrudes about 6-8" out of the other end of the PEX tubing.
4. Drive a stake in ground about 12" from the starting point of the wire run.
5. Move the Bantam Mole into position about 3-4" from the stake with the handlebar pointing in the direction of the wire run.
6. Secure the wire to the stake at ground level.
7. Crank the engine and run at full throttle.
8. Tilt the handlebar down until the rotor clears the ground and engage the rotor.
9. Slowly lower the rotor into the ground and start pulling the Bantam Mole toward you until the front wheel is on the ground. Once the front wheel is on the ground the wire is now buried to the desired depth. No continue to complete the wire run. To make turns, merely lift up on the handlebar and slide the rear wheels to make the turn. That is, always pivot the Bantam Mole on the front wheel.
10. When installing low voltage wire, at each light location, disengage the clutch lever and allow the rotor to stop turning. Then push down on the handlebar until the wire is above ground level and then lower the front of the machine back onto the ground. Pull about 10"-12" of slack wire off the wire spool. Place a short piece of 2" X 4" lumber under the loop and continue the wire run. Repeat this step at each light location.

Bantam Mole KIT # 480-249 Installation Instructions

1. Remove the Rotor (Part # 470-019) from the rotor shaft.
2. Remove the entire Bed Bantam hood assembly (item #30) from the bearing housing bracket and bearing housing arm leaving the hood braces (Part # 470-018) attached to the bearing housing. Set aside the Lower Belt Stop (Part # 450-025, Model B765H only) and Rear Hood Brace (Part # 470-010) for reinstallation.
3. Remove the Brush with Channel (Part # 450-752 & 450-503) from the bearing housing arm and set aside for reinstallation.
4. Install the Bantam Mole hood assembly to the bearing housing bracket and the bearing housing arm with the Brush with Channel (Part # 450-752 & # 450-503) between the hood back plate and the bearing housing arm.
5. Attached two Wire Spool Mount Brackets (Part #480-257) to the inside of the handlebar frame brackets. Leave bolts loose, do not tighten.
6. Attach Spool Holder (Part # 480-009) to the outside of the two Wire Spool Mount Brackets mentioned in step 5.
7. Now tighten all bolts attaching the Wire Spool Holder and Brackets.
8. Install the Bantam Mole Rotor (Part # 480-010) and tighten the outside ¾" nut to 70 ft lbs. Remember, the Rotor rotates counter-clockwise when facing it from the nut end of the rotor shaft. The carbide cutting tips should be on the top of the points on the right end and the bottom of the points on the left end.

The above 8 installation steps are for Bantam Mole Kit # 480-249 which converts a Bed Bantam to a Low Voltage Wire Bantam Mole for 7" deep cable placement.

For 3" Invisible Dog Fence Wire, you must order the 480-250 Conversion Kit. This kit consists of only five parts as shown in the drawing for that kit.

This page intentionally left blank.



BROWN

PRODUCTS, INC.TM

376 County Road 563 • Midland City, AL 36350 • (800) 897-3726 • Fax: (334) 983-1606

<http://www.brownproducts.com>