

Robin

Brush Cutter

MODEL NB231C

INSTRUCTION MANUAL

- Assembly
- Maintenance
- Operation
- Repair Parts

CAUTION:

**Read Rules for Safe Operation and
Instructions Carefully**



FUJIROBIN INDUSTRIES LTD.
Tokyo-Japan

Please read this instruction manual before operating your new NB231C Robin Brush Cutter. The information contained in this book will help you obtain the maximum service and performance from our product.

SAFETY RULES AND PRECAUTIONS

Proper safety precautions must be observed. Like all power equipment, this unit must be handled carefully. **DO NOT EXPOSE YOURSELF OR OTHERS TO DANGER.** Follow these simple rules:

1. Always wear safety goggles for eye protection. Dress properly, do not wear loose clothing or jewelry that could become caught in moving parts of the unit. Safe footwear should always be worn.
2. Inspect the entire machine for loose parts. (Nuts, bolts, screws, etc.)
3. **DO NOT USE** any attachment with this power head other than those manufactured by the manufacturer of the engine. Serious injury to the user or damage to the engine could result.
4. Keep the handles free of oil and fuel.
5. Always use the proper safety handle and hanging band when cutting.
6. Do not smoke while mixing fuel or filling the tank.
7. Do not mix fuel in an enclosed room or near open flames.
8. Always mix and store the fuel in a properly marked container that is approved for such usage.
9. Never remove the fuel tank cap while the engine is running.
10. Never start or run the engine inside a closed room or building. Fumes from the exhaust contain dangerous carbon monoxide.
11. Never attempt to make engine adjustments while the unit is running and strapped to the operator. Always make engine adjustments with the unit resting on a flat, clear surface.
12. Do not use the unit if it is damaged or poorly adjusted.
13. Inspect the area to be cut and remove all debris that could become entangled in the blade. Also remove any objects that the unit may sling during cutting.
14. Keep children away. Onlookers should be kept at a safe distance from the work area, at least 30 feet.
15. Do not use this unit for any job other than those for which it is intended as described in this manual.
16. Do not use this unit to cut or trim anything over waist high.
17. Do not overreach. Keep proper footing and balance at all times. Do not run unit standing on a ladder or any other unstable footing.
18. Keep hands and feet clear of the blade while unit is in use.
19. Do not run the unit at high speed when not cutting. Use the engine at 6,000~8,000 rpm. If the engine is used at lower revolution, grass may wind around the brush blade or wear may be caused by clutch's slipping.
20. Do not use the unit when you are tired.
21. Maintain the unit with care. Before use, make sure that the blade is well polished and is not broken or cracked. When the blade hits on a stone during operation, stop the engine immediately for inspection. If the blade is found to be broken, do not use it. Follow instructions for changing accessories.
22. Do not store in a closed area where fuel vapors can reach an open flame.
23. Use only replacement parts that are identical to original equipment parts when servicing the unit. These parts are available from your dealer. The use of any other accessory or attachment may create a potential hazard.

KNOW YOUR ROBIN BRUSH CUTTER

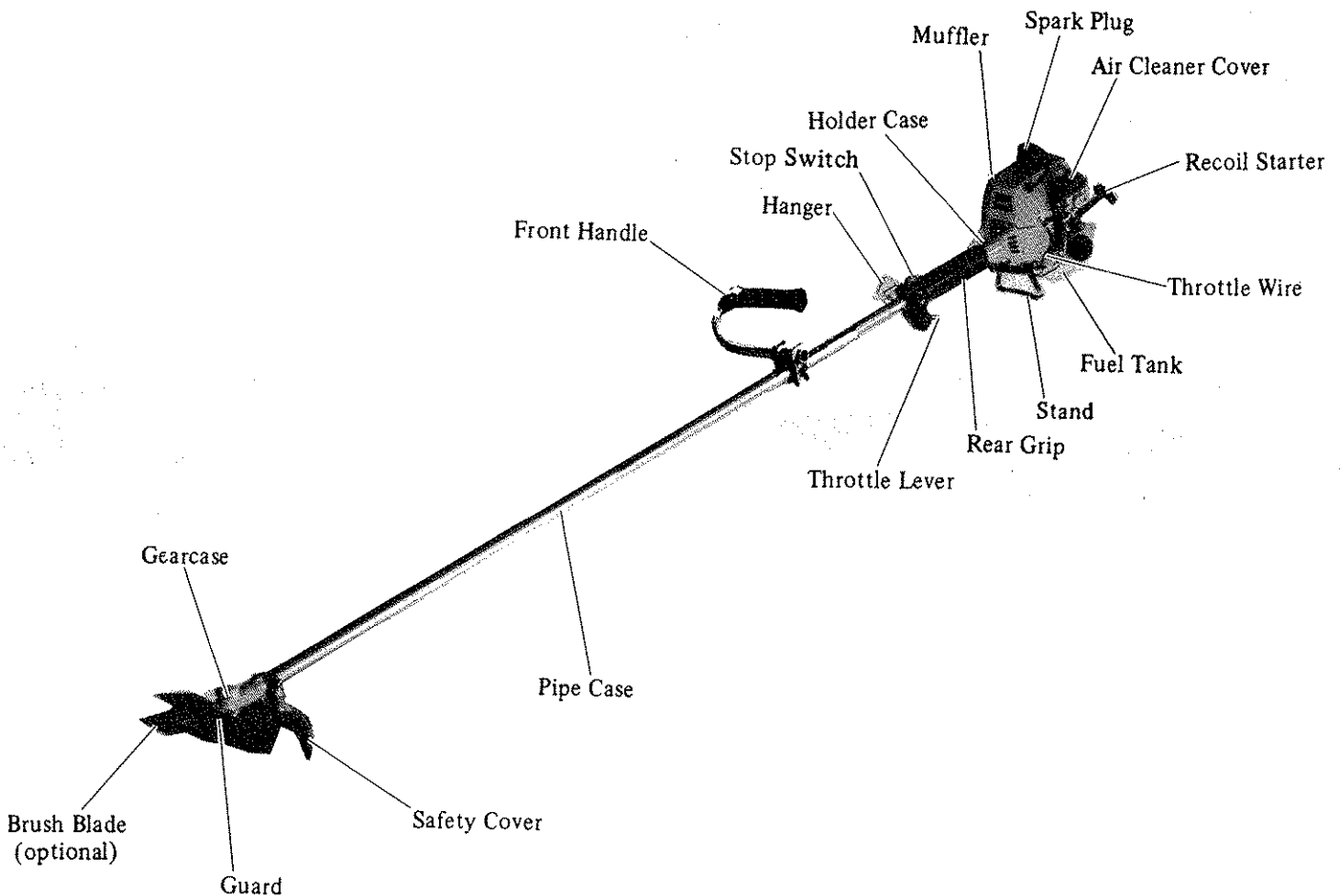
Your new ROBIN BRUSH CUTTER has been carefully packed at the factory to prevent damage during shipping and storage, however, even with the best of preventative measures, damage does sometimes occur. It is recommended that you follow the check out procedures listed below:

Remove all items from the carton, lay them out and check the parts to be sure that you have everything required for assembly. Also check carefully for any visible damage. (IN THE EVENT THAT SOMETHING IS DAMAGED OR MISSING OR BOTH, NOTIFY YOUR DEALER IMMEDIATELY.)

You should familiarize yourself with the various parts of your ROBIN BRUSH CUTTER before attempting to assemble or operate the unit. Refer to drawing below.

SPECIFICATIONS

ENGINE TYPE:	2 Cycle Air Cooled ROBIN EC02EH	FUEL TANK:	0.6 Liter — 20 oz.
DISPLACEMENT:	22.2 cc	SPARK PLUG:	NGK - BM7A (or equivalent)
OPERATIVE RPM:	7000	SPARK PLUG GAP:	0.6~0.7MM (.024"~.028")
STARTER:	Auto Rewind	LUBRICATION: NOTICE:	Fuel-Oil Mix Between 20 and 25 to 1 For the first twenty hours, use the mixing ratio of Between 15 and 20 to 1
CARBURETOR:	All Position — Diaphragm Type		
CLUTCH:	Automatic Centrifugal Type		



NOTICE: Specifications subject to change without notice for the purpose of improvement of the product.

PREPARATIONS FOR OPERATION

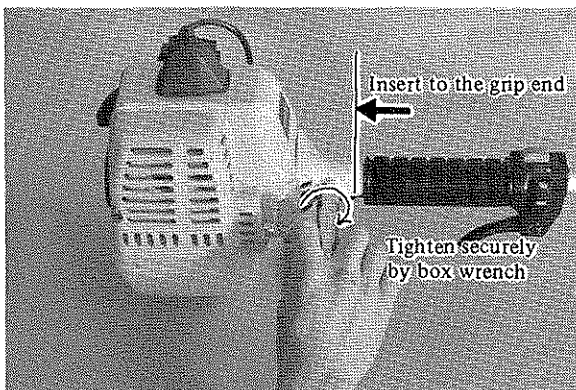
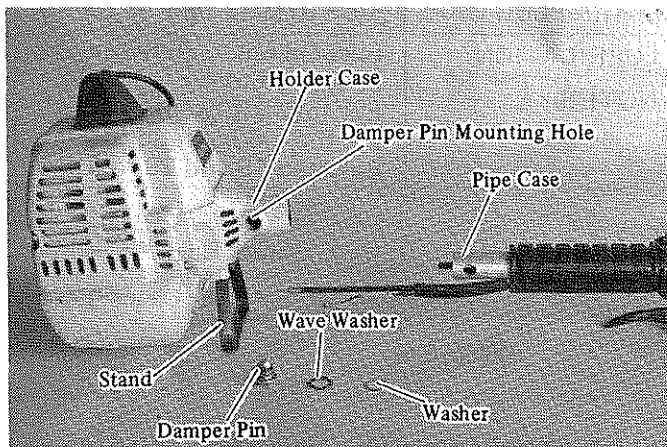
Unpack the brush cutter, you will find the engine, machine body handle, safety cover and cutter blade. Assemble them according to the steps mentioned below.

1 Attach stand to engine with two bolts.

2 Mounting of Engine and Pipe Case

- Remove the safety cover at the end of the pipe case.
- Insert the pipe case into the holder case being sure to match the splines of the inner shaft to those inside the holder case.
- Match the pipe case hole to the holder case hole and fasten the pipe case to the engine with large diameter bolt and wave washer.

(Tightening torque: 70 – 100 kg-cm)

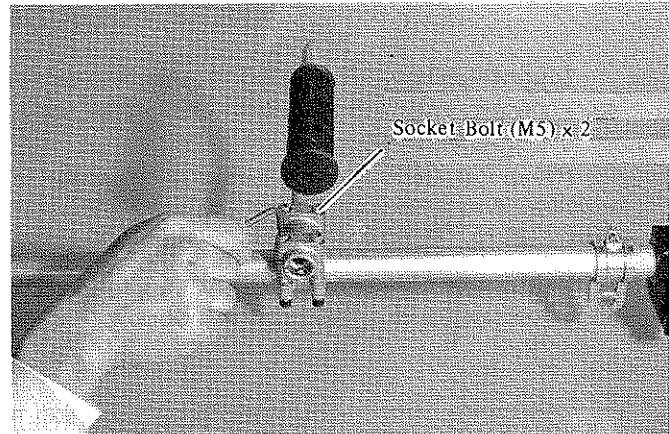


Caution:

Securely tighten the large diameter bolt. This is the primary part combining the engine and machine body.

3 Mounting of Handle

- As shown in the photo(Fig.3), tighten the loop handle with three socket bolts.

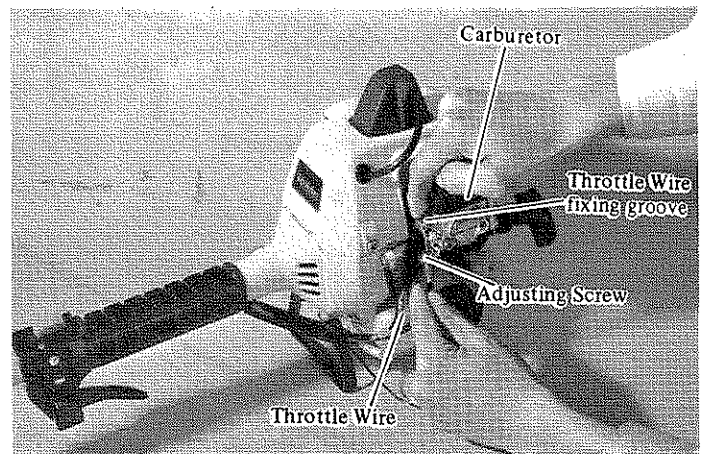


- Mount the handle so that the throttle wire guide will be located on the right, as viewed from the engine end.
- The standard position of the handle is 200 to 250 mm (7.87"–9.84") from the hanger. Choose an adequate handle position according to the worker's stature and working conditions.

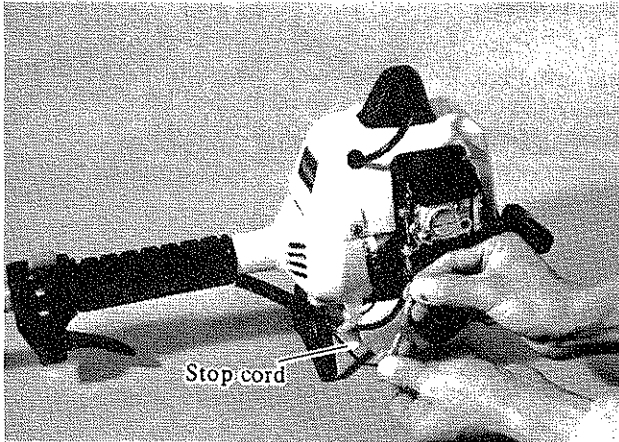
4 Assembling Throttle and Throttle Wire

Place Throttle Wire through the Adjusting Screw. The Throttle Wire End is to be assembled with Throttle Lever as shown in the Photo.

- Place the throttle wire through the adjusting bracket. The throttle wire end is to be assembled with the throttle lever as shown in the photo.



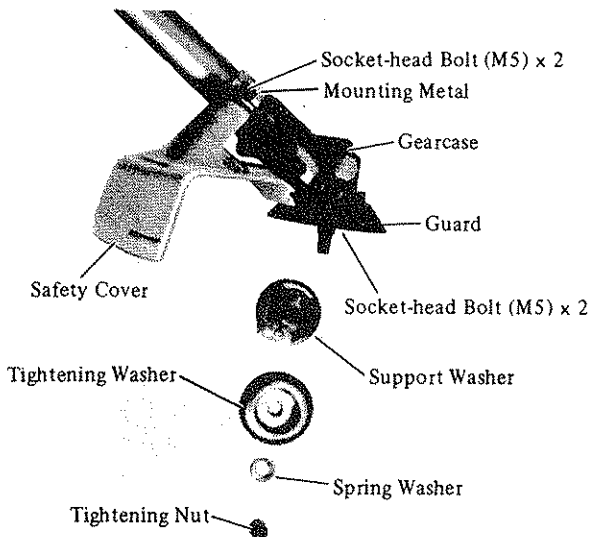
- Fit the throttle wire to the throttle lever, as shown in the photo.
- Adjust the carburetor adjusting screw so that the carburetor throttle will be opened fully at a high speed position of the throttle lever, and the wire will have a clearance of 2 – 3 mm (.079"–.118") when the lever is returned to the low speed position.
(Confirm that the cutter blade does not turn at idle.)



5 Assembling Stop Switch

Connect cord for stop switch.

- Adjust the carburetor adjusting screw so that the carburetor throttle will be opened fully at a high speed position of the throttle lever and the wire will have a clearance of 2 – 3 mm (.079" – .118") when the lever is returned to the low speed position. (Confirm that the cutter blade does not turn at idle.)



6 Mounting of Safety Cover

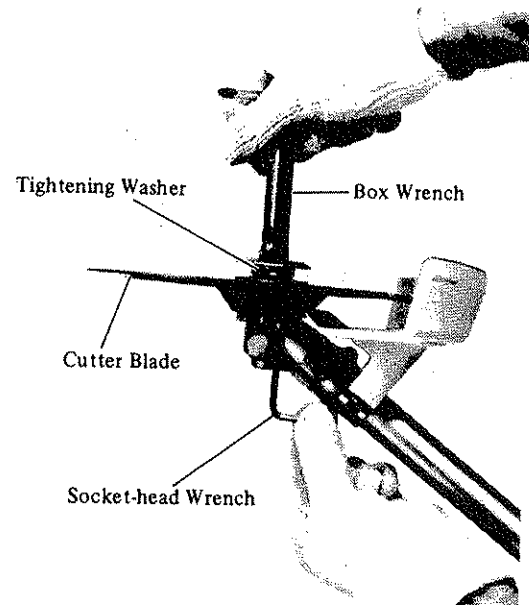
- Fasten the safety cover to the pipe case with two socket bolts. At this time, mount the safety cover so that it will come into contact with the gearcase.

7 Mounting and Removal of Cutter Blade

- Insert the socket-head wrench into the gearcase hole and turn the support washer so that it will be locked in its notch. (Be careful not to press the support washer too hard with the wrench.)
- Place the machine upside down.

- Fit the mounting hole of the cutter blade to the support washer. Then mount the tightening washer being sure to match the splines. Tighten the entire blade assembly by using the spring washer and tightening nut.

Note: Tightening bolt is left hand thread, tighten counterclockwise.



- Disassemble in the reverse order.
- When mounting or dismantling the cutter blade, be sure to wear gloves for your safety.

PREPARING FOR OPERATION

Fuel and oil mixture

Inspect the fuel tank and fill with clean, fresh fuel of the proper mixture. This engine requires a fuel oil mix. of between 20 and 25 parts gasoline to 1 part oil (1 gal. gasoline to 6 oz. oil) of regular leaded gasoline. For the first twenty hours, use the mixing ratio of between 15 and 20 to 1. (8 oz. oil to 1 gal. regular leaded gasoline).

WARNING! WARNING! WARNING!
WHEN MIXING GASOLINE WITH TWO CYCLE ENGINE OIL, USE ONLY GASOLINE WHICH CONTAINS NO ETHANOL OR METHANOL (TYPES OF ALCOHOL), THIS WILL HELP TO AVOID POSSIBLE DAMAGE TO ENGINE FUEL LINES AND OTHER ENGINE PARTS.

DO NOT MIX GASOLINE AND OIL DIRECTLY IN THE ENGINE FUEL TANK.

IMPORTANT: Failure to follow proper fuel mix instructions could result in serious damage to the engine.

CAUTION:

Do not use fuel mixture that has been stored longer than two (2) months. Fuel mixture stored longer than this will cause hard starting and poor performance. If fuel mix has been stored longer than this time it should be removed and filled with a fresh mixture.

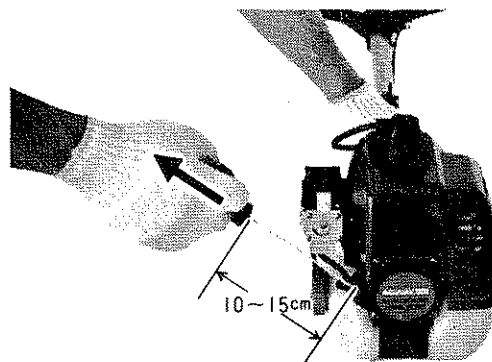
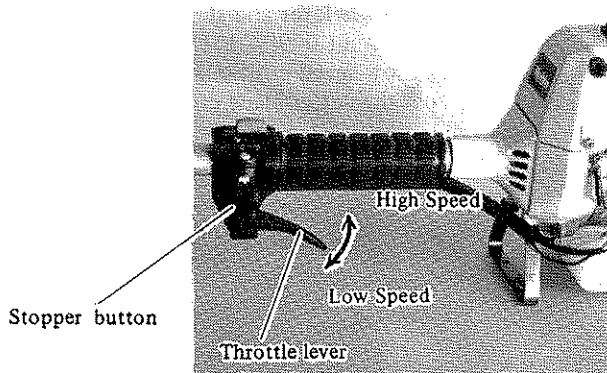
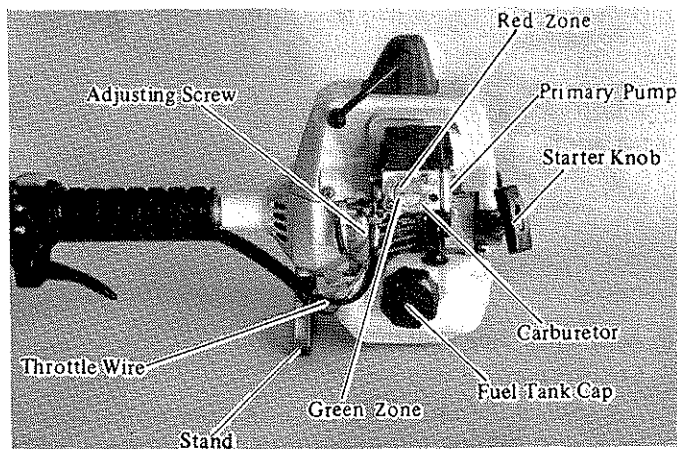
CAUTION! NEVER fill the fuel tank to the inlet Port level.
NEVER add fuel to the tank in a closed un-ventilated area.
DO NOT add fuel to this unit close to an open fire or sparks.
BE SURE to wipe off spilled fuel before attempting to start the engine.
DO NOT attempt to refuel an extremely hot engine.

Check points before operation

CHECK for loose bolts, nuts and fittings.
CHECK the air cleaner for dirt. Clean the air filter of all dirt, etc. before operation.

OPERATION

Prior to operation, be sure to check the machine according to the "Safety Checkup Items" to be mentioned later. Pay attention to tightening or breakage of the cutter blade.



- Pull the rope about 4''-6'' and check the direction of rotation. Then pull strongly upward at an angle (in the direction of the arrow).

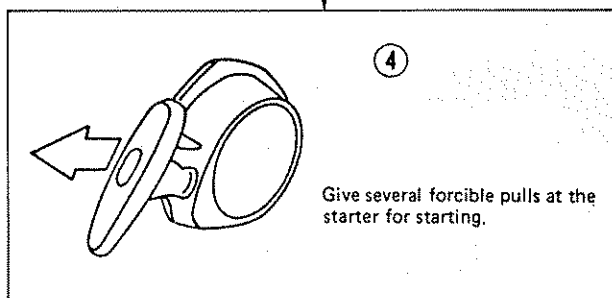
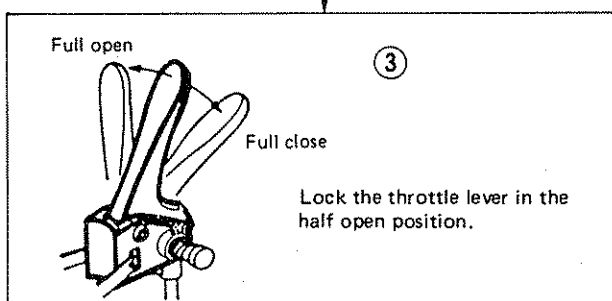
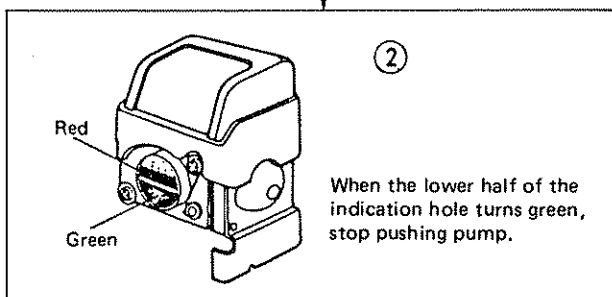
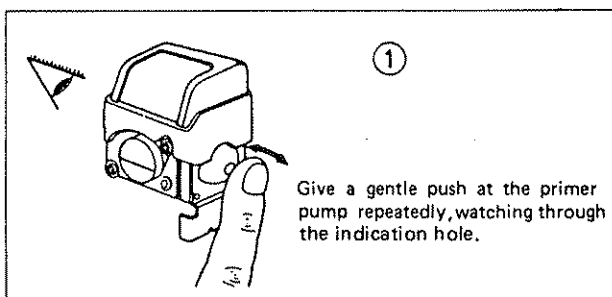
○ Cautions during Operation

- If the throttle lever is opened fully in a no-load operation, the engine rotation is increased to 10,000 rpm or more. Never operate the engine at a high speed surpassing 6000-8000 rpm.

ENGINE STARTING PROCEDURE

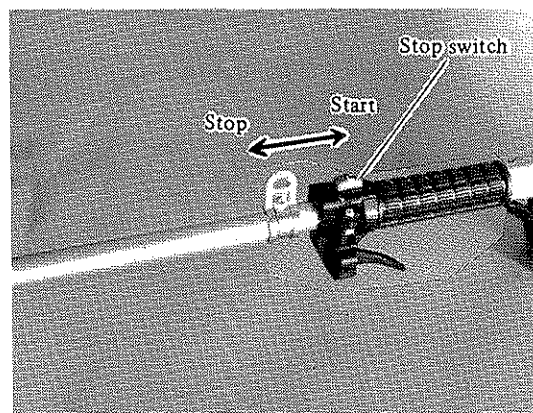
METHOD OF STARTING THE ENGINE

- After placing the machine horizontally on the ground, put the throttle lever in fully close position.
- When the engine is cold: → ① ② ③ ④
- When the engine is warm: → ④



Stopping

- Return Throttle Lever, and when RPM of Engine is lowered, push Stop Switch to STOP. Engine will stop.



Cautions in Handling of Engine

- Be sure to use properly mixed fuel.
- When the engine is cold, warm it up for one to two minutes.
- The carburetor has been adjusted before shipment. If readjustment is required, consult our agent or dealer.

CORRECT HANDLING OF MACHINE

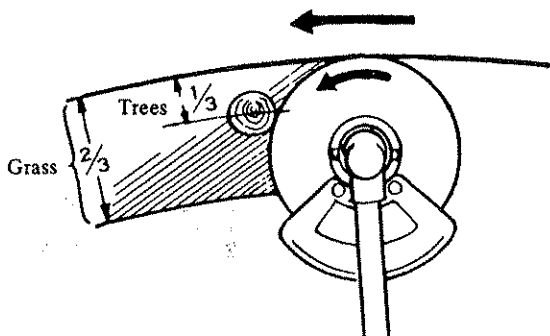
Handling

- Hang the machine on the right side of the body.
- Hold the throttle lever when cutting starts and release it when cutting ends.



- Depress the throttle lever, and the rotational speed will increase. Release it, and the engine will run at idle (low speed). Run the cutter blade at a rotational speed adequate for the type of grass being cut. If the rotational speed is excessively low, grass may be caught in the cutter blade.
- During grass cutting, hold the machine so as to permit easy handling of it.
- For effective cutting, swing the cutter blade from right

to left, while moving forward, and push cut objects aside.

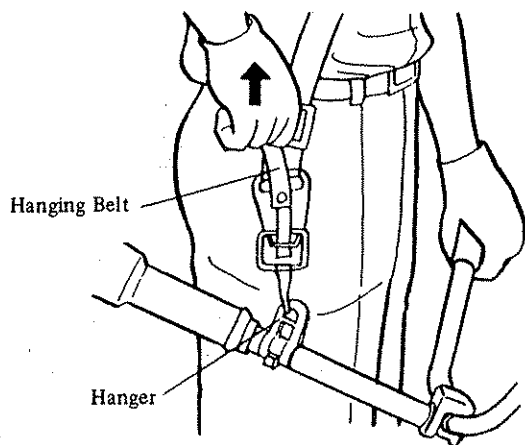
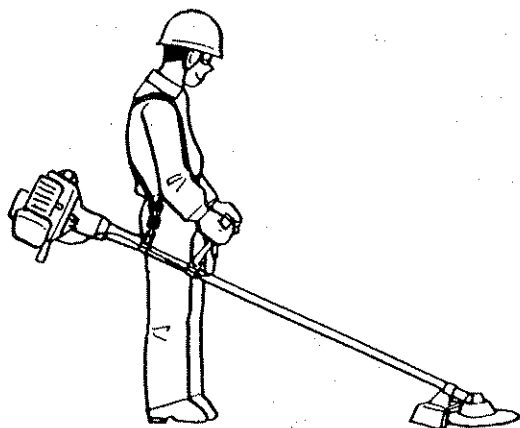


- Never strike or tap objects with the cutter blade.

○ Attachment and Detachment of Hanging Band

- Adjust the band length so that the cutter blade will be kept parallel with the ground.
- Detachment

In an emergency, pull the release belt upward strongly and you can detach the machine from you.

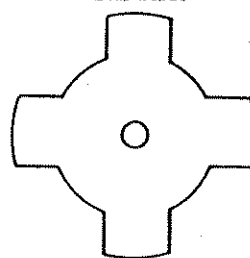


CUTTER BLADE

○ Be sure to use genuine Robin grass cutter blades.

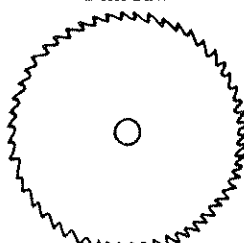
- Use Robin grass cutter blades.
- The outside diameter of the cutter blade must be 230mm (9.06") or below. Never use any blades surpassing 230 mm (9.06") in outside diameter.
- The cutter blade must be well polished, free of cracks or breakage. If the cutter blade hits against a stone during operation, stop the engine and check the blade immediately.
- Polish or replace the cutter blade every three hours of operation.
- When cutting grasses together with small trees use a disk blade.

Star Blade



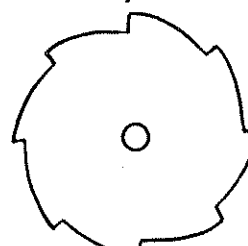
Grass, pasture

Disk Saw



Weeding, bamboo grasses

Eddy Blade

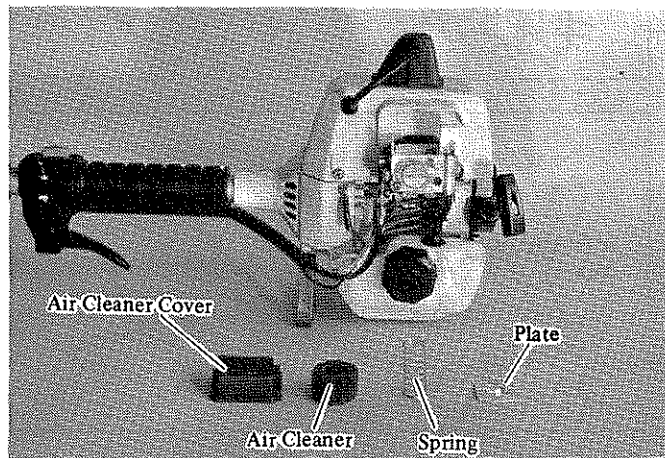


Pasture, rice

DAILY CHECKUP AND MAINTENANCE

○ Cleaning of Air Cleaner

- If the air cleaner is dirty, remove it and clean. A dirty air cleaner may make it difficult or impossible to start the engine or increase the engine speed.

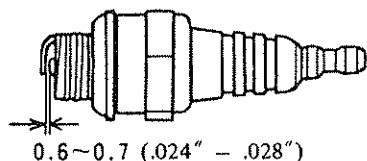


○ Cleaning of Cooling Air Passage

- Prior to operation, be sure to check the cooling air inlet, the gap between the fuel tank and crankcase. Also check the cylinder fins. Clean them if necessary.
- Remove the main cover and protection cover and clear the cooling air passage of dust or dirt.
- When operating the machine with the cooling air passage clogged with dust or dirt, the engine will not be cooled enough and will result in engine failure.

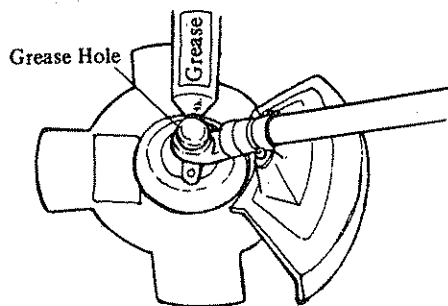
○ Spark Plug Maintenance

- The gap between the two electrodes of the spark plug is 0.6 – 0.7 mm (.024" – .028"). If the gap is too wide or too narrow, adjust it. If the spark plug is clogged with carbon or fouled, clean it thoroughly.



○ Gearcase Maintenance

- Supply grease (Shell Albania No. 2 or equivalent) to the grease from the gearcase plug every 30 hours. (Genuine Robin grease may be purchased from your Robin dealer.)



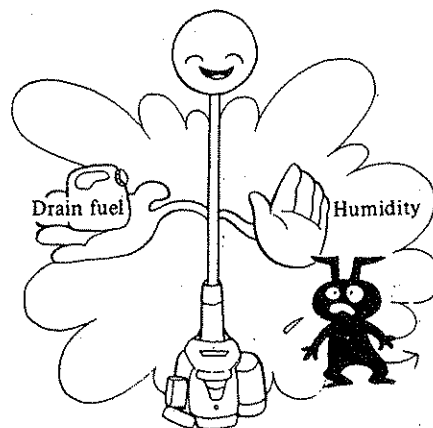
○ Cleaning of Muffler Exhaust Port

- Check the muffler exhaust port (tail pipe) every 50 hours. If the exhaust port is clogged with carbon, remove it with a screwdriver or other adequate tools.

STORAGE

○ Storage

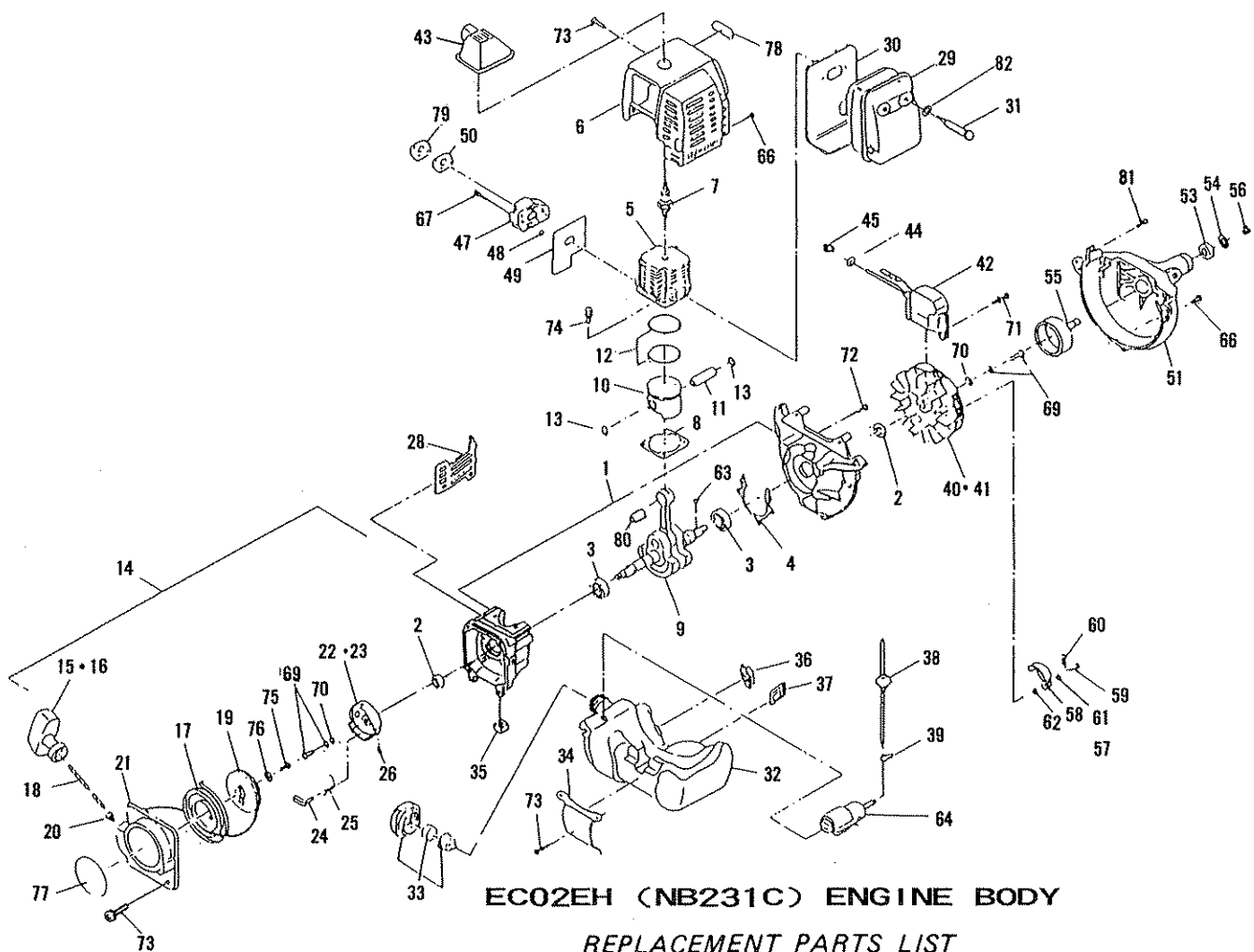
- When keeping the machine in storage for a long time, drain fuel from the fuel tank and carburetor, as follows:
Drain all fuel from the fuel tank.
- Remove the spark plug and add a few drops of oil into the spark plug hole. Then, pull the starter gently, confirm that an oil film covers the engine inside. Tighten the spark plug.
- Clear dirt or dust from the cutter blade and outside of engine, wipe them with a oil-immersed cloth and keep the machine as dry as possible.



CHECKUP ITEMS FOR SAFETY OPERATION

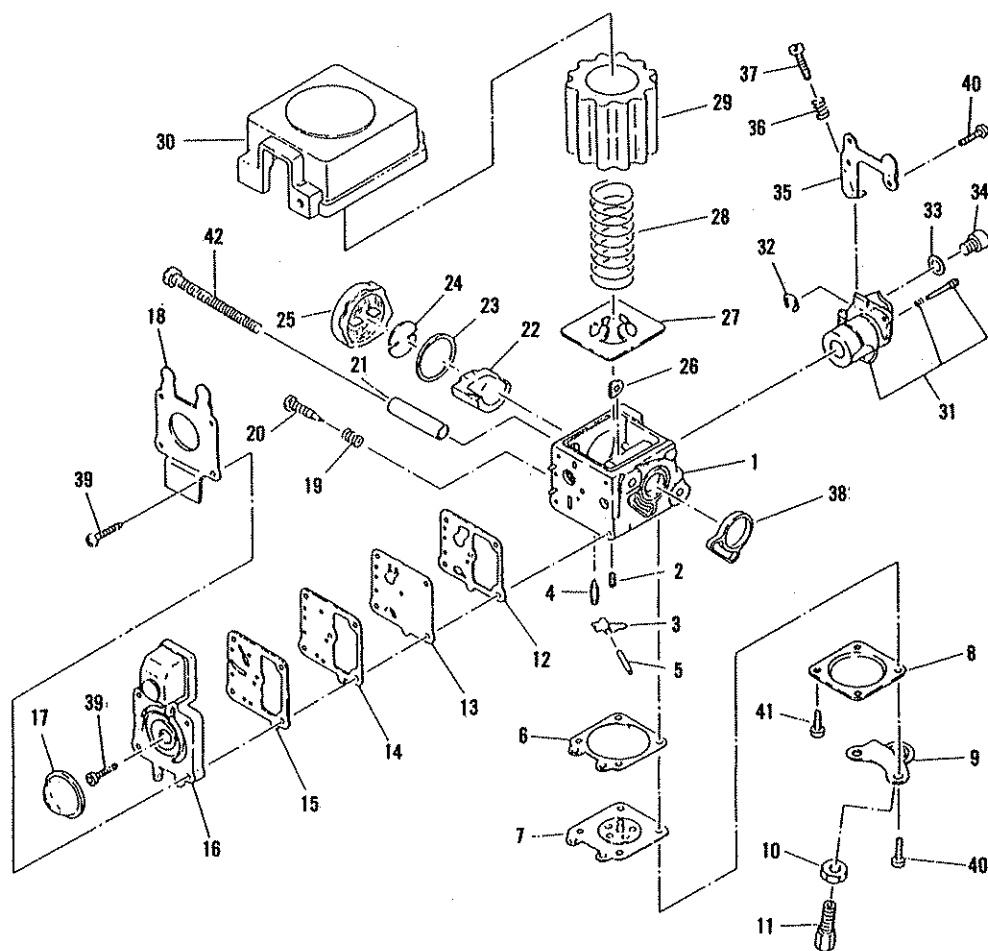
Prior to operation, be sure to check the following items to insure safe operation of this machine.

	No.	Check Point	Description	Checkup
Common	1	Aspect	By visual inspection, check for flaws, cracks or wear.	
	2	Bolts, nuts	Check for flaws, cracks, wear or loosening.	
Machine Body	3	Safety cover	1) Check for flaws, cracks or loosening. 2) Confirm that the safety cover is placed in contact with gearcase.	
	4	Gearcase	1) Confirm that there is no loose bolts.	
	5	Blade tightening washer	Confirm that there is no wear or warp in tightening washer or support washer.	
	6	Blade tightening nut	Confirm that blade tightening nut is fastened securely.	
	7	Blade	1) Confirm that a genuine Robin blade is installed. 2) Confirm that the blade is well sharpened. 3) Confirm that there is no crack or flaw on blade.	
	8	Handle	Confirm that handle-fixing bolts are tightened securely.	
	9	Hanging band	1) Is there any crack or flaw on hanging band? 2) Can you easily detach yourself from machine when pulling release belt?	
Engine	10	Throttle lever	1) Does throttle lever work freely? 2) Can engine rpm be adjusted between low high speeds?	
	11	Stop button	Does engine stop immediately?	
	12	Muffler, muffler cover	1) Clean carbon from muffler. 2) Check muffler cover for damage or loosening.	
	13	Holder case	1) Check damper pin for secure tightening. 2) Confirm that 3 holder case-tightening screws are not loosened.	



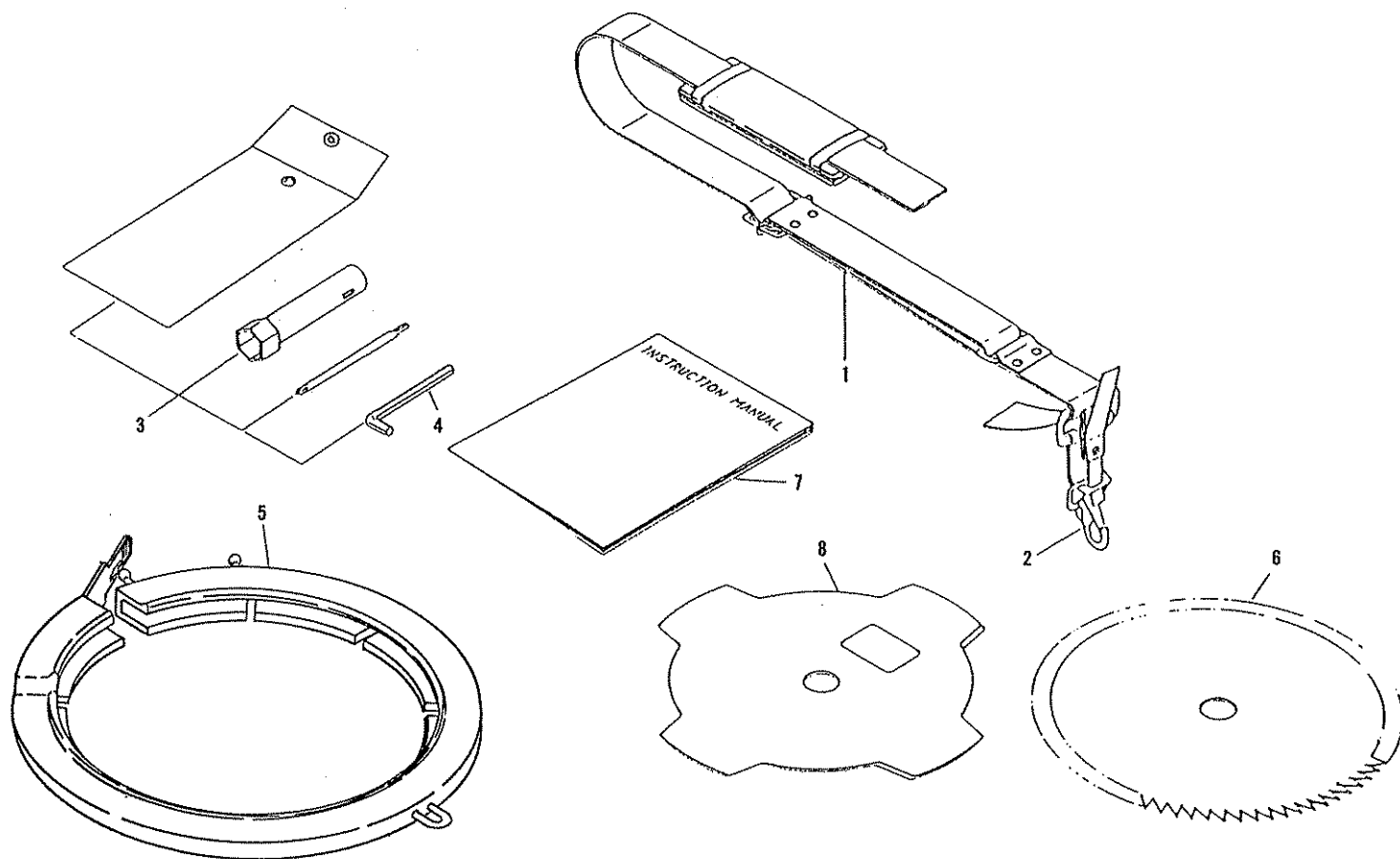
KEY No.	PART No.	QTY.	DESCRIPTION
1	503 10030 00	1	Crankcase compl. (incl. 2~4)
2	0440 12999 1	2	Oil seal
3	0600 12992 0	2	Ball bearing
4	521 15004 00	1	Crankcase packing
5	523 15000 00	1	Cylinder
6	521 55001 00	1	Main cover
7	0650 14981 0	1	Spark plug (NGK-BM7A exuivalent)
8	523 15002 00	1	Cylinder packing
9	523 20030 01	1	Crankshaft compl.
10	523 25002 01	1	Piston
11	524 25001 00	1	Piston pin
12	510 25010 00	2	Piston ring
13	0565 08998 0	2	Clip
14	521 50010 00	1	Recoil starter compl. (incl. 15~26, 75, 76)
15	521 50020 00	1	Recoil starter ass'y (incl. 16~21, 75, 76)
16	521 50021 10	1	Starter knob
17	521 50020 30	1	Spiral spring
18	521 50020 60	1	Starter rope
19	521 50020 20	1	Reel
20	502 50010 30	1	Rope guide
21	521 50020 10	1	Starter case
22	523 50030 00	1	Starter pulley compl. (incl. 23~26)
23	521 50030 10	1	Starter pulley
24	521 50030 20	1	Ratchet
25	523 50030 10	1	Return spring
26	521 50030 40	1	E ring
28	521 55000 00	1	Protect cover
29	523 30170 00	1	Muffler, exhaust
30	521 35002 00	1	Muffler gasket
31	0119 05975 0	2	Socket head bolt (M5×45)
32	521 65004 00	1	Fuel tank
33	521 60040 03	1	Fuel tank cap compl.
34	521 65003 00	1	Tank stay
35	521 65002 00	2	Rubber cushion
36	503 65002 00	1	Rubber plate(1)
37	503 65003 00	1	Rubber plate(2)
38	0851 17999 0	1	Rubber tube compl.
39	0561 05999 0	1	Hose clamp
40	521 70010 00	1	Magneto ass'y (incl. 41, 42)
41	521 70010 10	1	Flywheel
42	521 70010 20	1	Ignition coil

KEY No.	PART No.	QTY.	DESCRIPTION
43	521 75000 00	1	Plug cap
44	0241 05500 0	1	Grommet
45	0854 00994 0	1	Plug cap spring
47	521 30040 00	1	(WZ) Insulator ass'y (incl. 48)
48	00217 0400 0	2	Nut (Insulator)
49	520 35002 00	1	Insulator packing
50	521 35016 00	1	(WZ) Gasket
51	621 55010 00	1	Holder case
53	621 25003 00	1	Ball bearing
54	00314 2400 0	1	Snapring (inner)
55	621 20010 00	1	Clutch drum compl.
56	00315 0800 0	1	Snapring (outer)
57	621 20030 00	1	Clutch compl. (incl. 58~62)
58	625 25008 00	2	Clutch shoe
59	625 25004 00	2	Clutch bolt
60	523 85005 00	1	Spring, clutch
61	0200 08991 0	2	Wave washer
62	620 25006 00	2	washer
63	00532 0310 1	1	Woodruff key (Rear crankshaft)
64	501 65003 00	1	Filter
66	0150 05999 0	3	Tapping screw
67	0140 05970 0	2	plus & minus screw ass'y SW-W
69	00113 0616 0	2	Bolt ass'y
70	00312 0600 0	2	Washer
71	0119 05987 0	2	Socket head bolt (M5×18) W SW
72	00435 0525 0	3	Screw ass'y
73	00436 0518 0	5	Screw ass'y
74	0119 05995 0	2	Bolt (socket head) (M5×18) SW
75	510 50151 10	1	Set screw
76	521 50020 40	1	Washer
77	621 95074 00	1	Label (Model)
78	521 95020 00	2	Trade mark
79	510 35034 00	1	Spacer (carburetor)
80	0610 08999 0	1	Needle bearing
81	0150 05998 0	1	Tapping screw
82	00310 0500 0	2	Washer



EC02EHR (NB231C) CARBURETOR **REPLACEMENT PARTS LIST**

KEY No.	PART No.	QTY.	DESCRIPTION	KEY No.	PART No.	QTY.	DESCRIPTION
1	523 60060 00	1	Carburetor compl. (incl. 2~41)	22	531 60057 10	1	Filter-wick
2	523 60060 20	1	Spring-metering lever	23	531 60056 60	1	Gasket-intake cap
3	531 60055 50	1	Laver-metering	24	531 60056 50	1	Plate-wick
4	531 60051 50	1	Valve-inlet needle	25	531 60056 40	1	Cap-intake
5	531 60055 10	1	Pin-metering lever	26	531 60055 40	2	Plate-mounting sleeve
6	531 60052 30	1	Gasket-metering diaphragm	27	501 60020 50	1	Place-cleaner
7	531 60052 50	1	Diaphragm ass'y-metering	28	531 60050 50	1	Spring-filter
8	531 60050 30	1	Cover-metering diaphragm	29	501 60020 40	1	Filter-air
9	531 60056 30	1	Bracket-cable	30	501 60020 10	1	Cover-air cleaner
10	531 60054 50	1	Nut-cable ADJ	31	523 60060 10	1	Valve ass'y-throttle
11	531 60053 30	1	Screw-cable ADJ	32	531 60051 20	1	Ring-spring retaining
12	531 60052 20	1	Gasket-pump	33	531 60054 60	1	Washer
13	531 60052 40	1	Diaphragm-pump	34	531 60051 10	1	Swivel
14	531 60055 20	1	Plate pump	35	501 60021 10	1	Bracket-idle screw
15	531 60052 10	1	Gasket-plate	36	531 60053 60	1	Spring-idle ADJ
16	531 60050 20	1	Cover-ass'y-pump	37	531 60052 60	1	Screw-idle ADJ
17	531 60056 20	1	Primer-pump	38	531 60051 40	2	Ring-packing
18	501 60020 60	1	Bracket-primer pump	39	531 60053 10	5	Screw-pump cover
19	531 60053 50	1	Spring-high speed needle	40	531 60053 40	4	Screw
20	523 60060 30	1	Needle-high speed	41	531 60053 20	2	Screw-metering cover
21	531 60054 30	2	Sleeve-mounting	42	0140 04984 0	2	Plus & minus screw ass'y W



NB231C ACCESSORIES
REPLACEMENT PARTS LIST

KEY No.	PART No.	QTY.	DESCRIPTION
1	620 70030 00	1	Hanging band compl.(incl.2)
2	625 75004 00	1	Hook
3	621 90010 00	1	Tool kit(incl.4)
4	0717 04999 0	1	Wrench(socket head)
5	641 85007 00	1	Brade cover
6	649 85002 00	1	Disk saw(230×60)
7	621 95047 01	1	Instruction manual
8	620 85012 00		Star brade(230×4)(optional)

LIMITED TWO YEAR WARRANTY

Carswell Import & Marketing Associates, Inc. (hereafter CIMA), sales agent for FujiRobin Industries, Ltd. warrants each new Robin brush cutter for twenty-four (24) months according to the following terms.

This warranty extends to the original retail purchaser only and commences on the date of original retail purchase.

Any part of Robin brush cutter supplied by CIMA and found in the reasonable judgment of an Authorized Robin Service Center to be defective in material or workmanship will be repaired by an Authorized Robin Service Dealer without charge for parts and labor.

The Robin brush cutter including any defective part must be returned to an Authorized Robin Service Dealer within the warranty period. The expense of delivering the Robin brush cutter to the dealer for warranty work and the expense of returning it back to the owner after repair or replacement will be paid for by the owner.

CIMA's responsibility in respect to claims is limited to making the required repairs or replacements and no claim of breach of warranty shall be cause for cancellation or rescission of the contract of sale of any Robin brush cutter. Proof of purchase will be required by the dealer to substantiate any warranty claim. All warranty work should be performed by an Authorized Robin Service Dealer.

This warranty is limited to ninety (90) days from the date of original retail purchase for any Robin brush cutter that is used for rental or commercial purposes, or any other income-producing purpose.

This warranty does not cover any Robin brush cutter that has been subject to misuse, neglect, negligence, or accident, or that has been operated in any way contrary to the operating instructions as specified in the Robin Operator's Manual. The warranty does not apply to any damage to the Robin brush cutter that is the result of improper maintenance or to any Robin brush cutter or parts that have not been assembled or installed as specified in the Robin Operator's Manual. The warranty does not cover any Robin brush cutter that has been altered or modified so as to adversely affect the product's operation, performance or durability or that has been altered or modified so as to change its intended use. In addition, the warranty does not extend to repairs made necessary by normal wear, or by the use of parts or accessories which are either incompatible with the Robin brush cutter or adversely affect its operation, performance or durability.

Robin reserves the right to change or improve the design of any Robin brush cutter without assuming any obligation to modify any brush cutter previously manufactured.

ALL IMPLIED WARRANTIES ARE LIMITED IN DURATION TO THE TWENTY-FOUR (24) MONTHS WARRANTY PERIOD OR NINETY (90) DAYS FOR BRUSH CUTTERS USED FOR ANY INCOME-PRODUCING PURPOSE. ACCORDINGLY, ANY SUCH IMPLIED WARRANTIES INCLUDING MERCHANTABILITY, FITNESS FOR A PARTICULAR PURPOSE, OR OTHERWISE, ARE DISCLAIMED IN THEIR ENTIRETY AFTER THE EXPIRATION OF THE APPROPRIATE TWENTY-FOUR (24) MONTHS OR NINETY (90) DAYS WARRANTY PERIOD.

CIMA'S OBLIGATION UNDER THIS WARRANTY, IS STRICTLY AND EXCLUSIVELY LIMITED TO THE REPAIR OR REPLACEMENT OF DEFECTIVE PARTS, AND CIMA DOES NOT ASSUME OR AUTHORIZE ANYONE TO ASSUME FOR THEM ANY OTHER OBLIGATION. SOME STATES DO NOT ALLOW LIMITATIONS ON HOW LONG AN IMPLIED WARRANTY LASTS, SO THE ABOVE LIMITATION MAY NOT APPLY TO YOU.

CIMA ASSUMES NO RESPONSIBILITY FOR INCIDENTAL, CONSEQUENTIAL OR OTHER DAMAGES INCLUDING, BUT NOT LIMITED TO, EXPENSE FOR GASOLINE, EXPENSE OF RETURNING THE ROBIN BRUSH CUTTER TO AUTHORIZED SERVICE DEALER AND EXPENSE OF DELIVERING IT BACK TO THE OWNER, MECHANIC'S TRAVEL TIME, TELEPHONE OR TELEGRAM CHARGES, RENTAL OF A LIKE PRODUCT DURING THE TIME WARRANTY SERVICE IS BEING PERFORMED, TRAVEL, LOSS OR DAMAGE TO PERSONAL PROPERTY, LOSS OF REVENUE, LOSS OF THE BRUSH CUTTER, LOSS OF TIME, OR INCONVENIENCE. SOME STATES DO NOT ALLOW THE EXCLUSION OR LIMITATION OF INCIDENTAL OR CONSEQUENTIAL DAMAGES, SO THE ABOVE LIMITATION OR EXCLUSION MAY NOT APPLY TO YOU.

This warranty gives you specific legal rights, and you may also have other rights which vary from state to state.

This warranty applies to Robin brush cutter sold by CIMA in the United States. To validate this warranty original purchaser must complete the attached Warranty Registration Form and return it within ten (10) days of purchase.

CARSWELL IMPORT
AND MARKETING ASSOCIATES, INC.
WINSTON-SALEM, NORTH CAROLINA 27115

FujiRobin Industries, Ltd.
Shinjuku-ku, Tokyo, Japan

WARRANTY SERVICE

Warranty service can be performed by an Authorized Robin Service Dealer regardless of whether the consumer purchased the Robin product originally from that dealer. However, we recommend you first contact the original dealer who sold you the product. Remember, it is your responsibility to deliver your Robin product along with proof of purchase to the dealer within the warranty period, and all work must be performed by an Authorized Robin Service Dealer.

Example of Parts and Service not covered by Warranty

Normal service requirements occurring during the warranty period such as carburetor or ignition adjustment.

Normal service over and above repair or replacement of defective parts.

Repair or maintenance service due to normal wear, improper maintenance, misuse, neglect, negligence, accident, also alternations or modifications which adversely affect product's performance, durability, or change their intended use.

Repairs or maintenance made necessary due to use of parts or accessories which are not compatible with Robin products or adversely affect its operation, performance, or durability.

Products not operated or maintained in accordance with the Instruction Manual.

Normal cleaning, lubrication, adjustments, or replacement of such items as spark plugs, filters, ignition points, etc.

Expense of delivering the product to an Authorized Service Dealer or of returning such products, or mechanics travel time, or cost of any rental of a like product during the period warranty service is being performed.

Warranty applies only to original retail purchaser.

Owner's Obligation and Responsibility —

It is the responsibility of the owner to provide for normal maintenance service and replacement of service items and to maintain all components in proper adjustment. These are not considered defects in material or workmanship. Individual operation and application determine the need for normal maintenance service.

Robin Warranty Registration

Owner's Name _____

Address _____

City State Zip

Dealer's Name _____

Address _____

City State Zip

Date of Purchase _____

Model No. _____ Serial No. _____

This Registration Form must be completed and returned within ten (10) days of purchase.

(Detach and Mail)

From _____

PLACE
STAMP
HERE

CIM CARSWELL IMPORT &
MARKETING ASSOCIATES, INC.
P.O. Box 16221, Winston-Salem, N.C. 27115



FUJI ROBIN INDUSTRIES LTD.