

Robin

Brush Cutter

MODEL NB02T

INSTRUCTION MANUAL

- Assembly
- Maintenance
- Operation
- Repair Parts

CAUTION:

**Read Rules for Safe Operation and
Instructions Carefully**



FUJIROBIN INDUSTRIES LTD.
Tokyo-Japan

This instruction manual is intended to help you obtain the best possible performance from your Robin Brush Cutter.

Please read this manual carefully before operating your new Brush Cutter.

RULES FOR SAFE OPERATION:

- Check all components and parts of the unit and make sure all fasteners are properly tightened and no parts are missing. Be absolutely certain the cutter is properly attached.
- Wear safety glasses or goggles at all times when cutting.
- Dress properly and do not operate the unit when barefoot or wearing open sandals.
- Keep face, hands, and feet clear of rotating cutter at all times.
- Keep all by-standers, especially children, at a safe distance from work area.
- Do not overreach. Keep proper footing and balance at all times.
- If you strike or become entangled with a foreign object, stop cutting immediately and check for damage. Have any damage repaired before further operation of the unit is attempted.
- Stop the engine, let it cool, and disconnect the spark plug wire before attempting to adjust or repair the unit.
- Keep unit clean, especially the fuel tank and air cleaner.
- Operate your unit only in a well ventilated area.
- Do not smoke while operating or fueling engine.
- Turn off engine and let cool before refueling.
- Do not store the unit for long periods of time with fuel in the tank.
- Always stop engine when cutting is delayed or when walking from one cutting location to another.

KNOW YOUR ROBIN BRUSH CUTTER

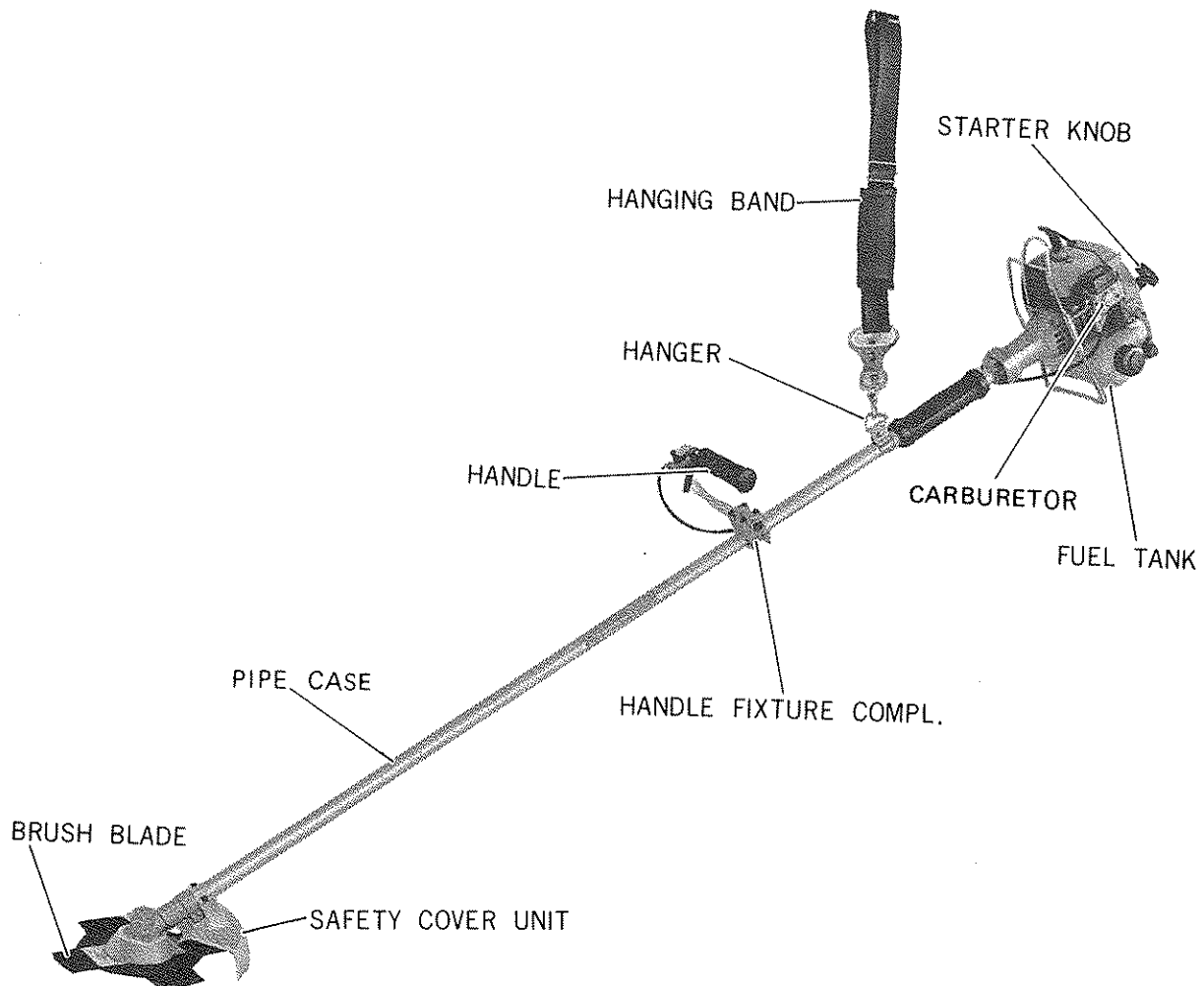
Your new ROBIN BRUSH CUTTER has been carefully packed at the factory to prevent damage during shipping and storage. It is recommended that you follow the inspection procedures listed below:

Remove all items from the carton, lay them out and check the parts to be sure that you have everything required for assembly. Also check carefully for any visible damage. (IN THE EVENT THAT SOMETHING IS DAMAGED OR MISSING NOTIFY YOUR DEALER IMMEDIATELY.)

You should familiarize yourself with the various parts of your ROBIN BRUSH CUTTER before attempting to assemble or operate the unit. Refer to drawing below.

SPECIFICATIONS

ENGINE TYPE:	2 Cycle Air Cooled ROBIN-ECO2R	FUEL TANK:	0.7 Liter
DISPLACEMENT:	22.5 cc (1.37 Cu. In.)	SPARK PLUG:	NGK - BM7A
OPERATIVE RPM:	6000	SPARK PLUG GAP:	0.6~0.7mm (.024" ~ .028")
STARTER:	Auto Rewind	LUBRICATION: NOTICE:	Fuel, Oil Mix Between 20 and 25 to 1 For the first twenty hours, use the mixing ratio of Between 15 and 20 to 1
CARBURETOR:	All Position — Diaphragm Type		
CLUTCH:	Centrifugal		



NOTICE: This specification is subject to change without notice for the purpose of improvement of the product.

ASSEMBLY INSTRUCTIONS

1. The engine is completely assembled and needs no further assembly other than attaching the drive shaft. You will note that even the throttle wire is assembled to the engine. Figure 1.

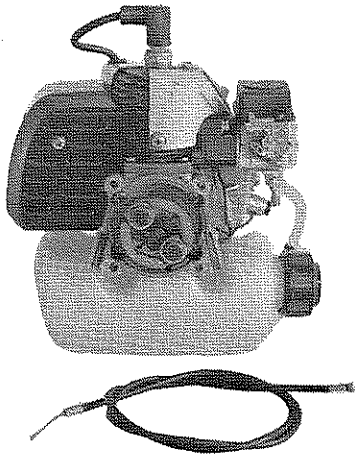


Figure 1

2. Install stand as shown in figure 2 by aligning clutch housing with locating plate.

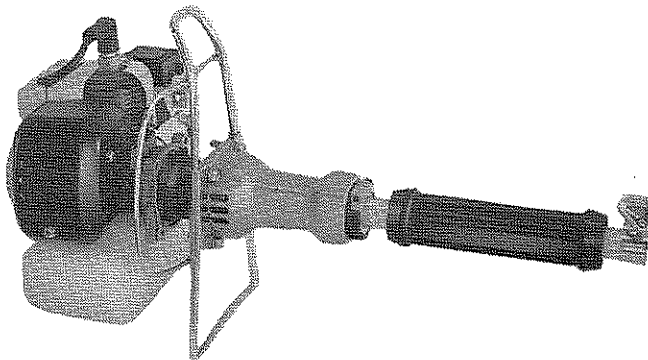


Figure 2

3. Using the bolts provided fit drive shaft to engine. Figure

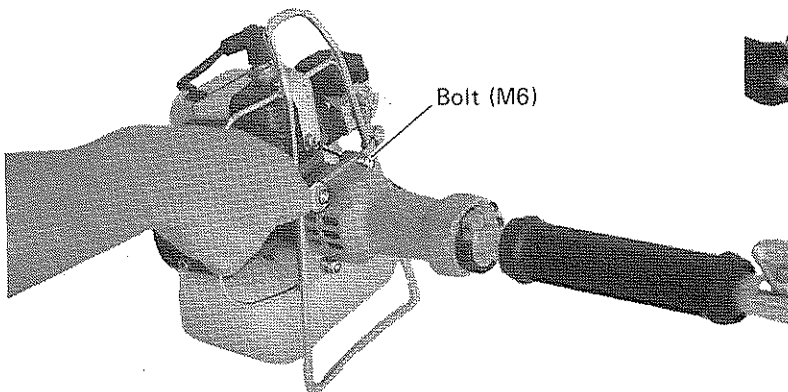


Figure 3

4. Place throttle wire in adjusting screw. Pass throttle wire as shown in figure 4 and insert through the hole in the handle grip. Figure 4.

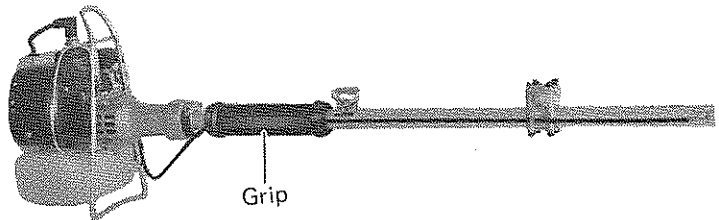


Figure 4

5. Install throttle wire clamp as illustrated. Insert the handle bar into the handle joint, making sure that the boss in the handle joint fits into the hole in the handle. After the handle bar is in place, tighten the four bolts. Figure 5. **BE SURE THE BOLTS ARE TIGHT, BUT DO NOT OVERTIGHTEN.**

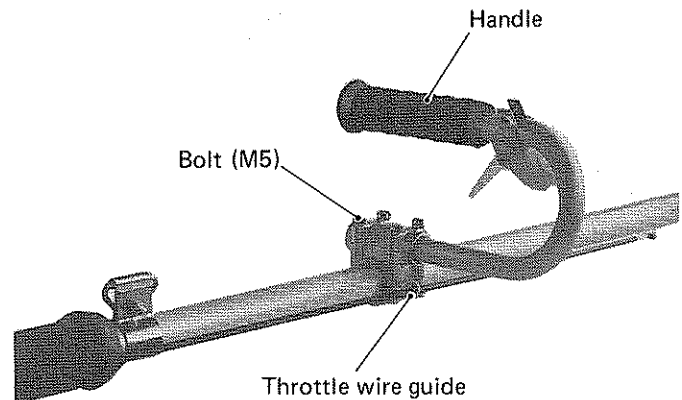


Figure 5

6. Bring the throttle wire up to the throttle lever and attach by inserting the ball lock into the slot of the throttle lever. Figure 6.

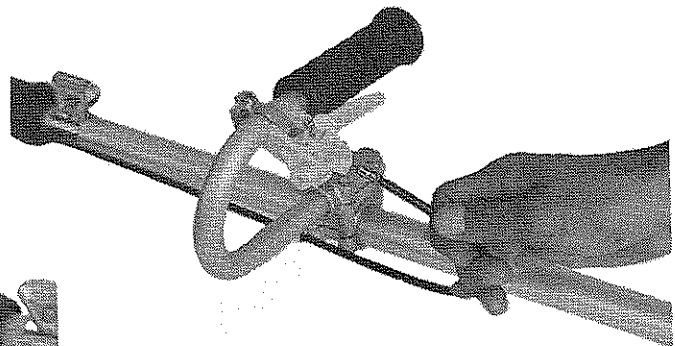


Figure 6

7. Release throttle lever and pull the wire down until it fits into the slot provided in the lever. Figure 7. CHECK ACTION OF THROTTLE LEVER, IT SHOULD MOVE FREELY IN BOTH DIRECTIONS.

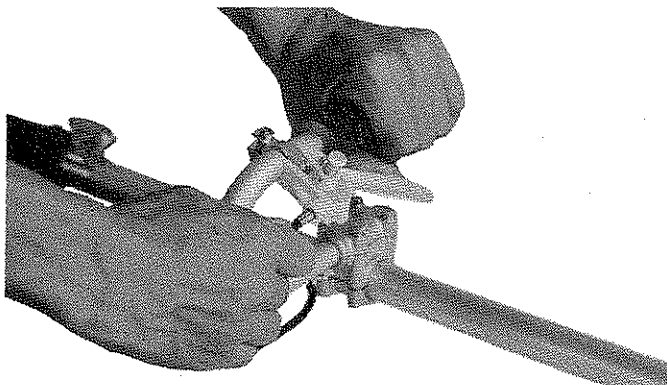


Figure 7

ASSEMBLING THE SAFETY COVER UNIT Figure 8.

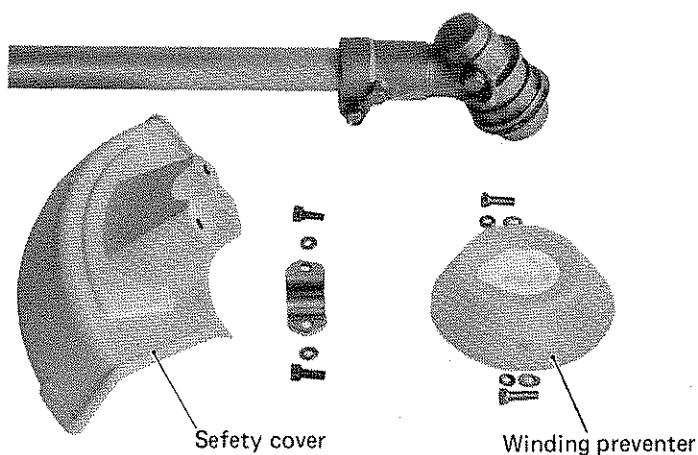


Figure 8

8. Install winding preventer and the safety cover with the bolts and nuts provided illustrated.

Recheck all bolts making sure they are secure.

NOTE: CHECK AGAIN AFTER THE FIRST FEW HOURS OF OPERATION.

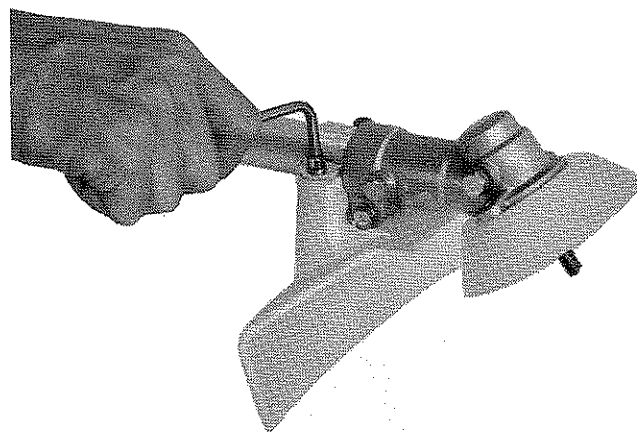
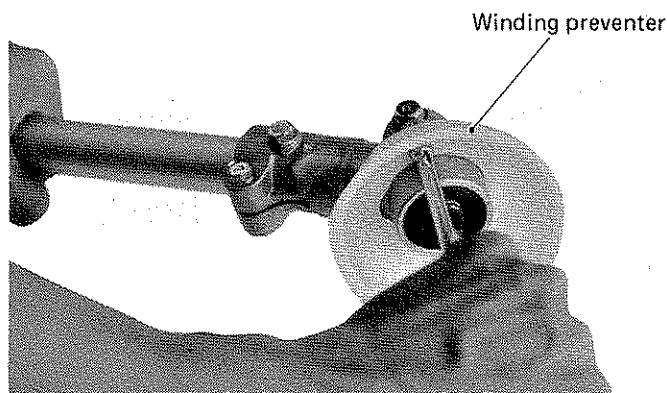


Figure 9

9. Attach the blade as illustrated Figure 10.

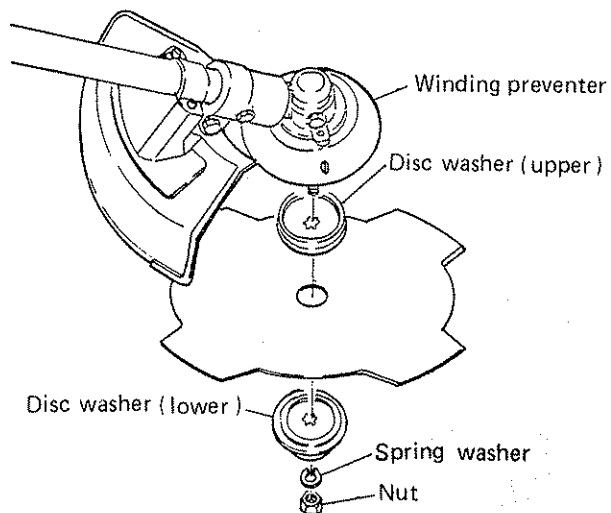


Figure 10

10. If attaching a nylon cutter head install in order shown Figure 11.

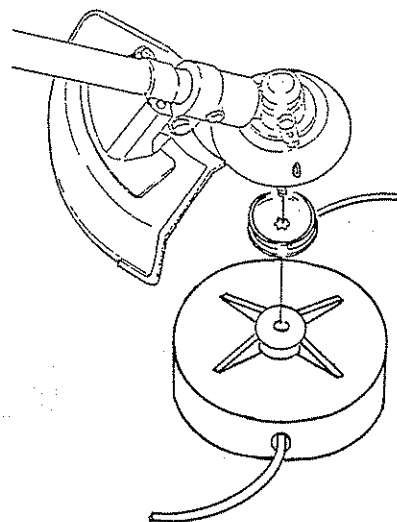


Figure 11

11. Install lower disc washer with large recess toward blade and securely tighten nut. To lock drive shaft insert lock handle through hole in upper disc washer and gear box.

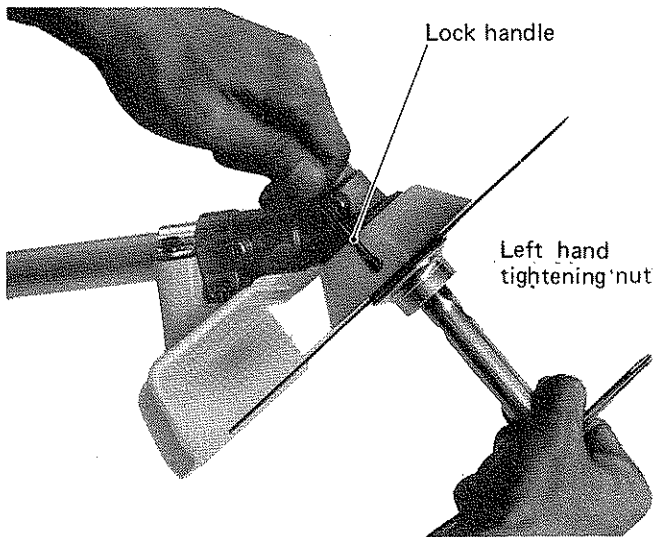


Figure 12

PREPARING FOR OPERATION

Fuel and oil mixture

Inspect the fuel tank and fill with clean, fresh fuel of the proper mixture. This engine requires a mixture of gasoline of between 20 and 25 parts gasoline to 1 part oil (1 gal. gasoline to 6 oz. oil) of regular leaded gasoline. For the first twenty hours, use the mixing ratio of between 15 and 20 to 1. (8 oz. oil to 1 gal. regular leaded gasoline).

WARNING! WHEN MIXING GASOLINE WITH TWO CYCLE ENGINE OIL, USE ONLY GASOLINE WHICH CONTAINS NO ETHANOL OR METHANOL (TYPES OF ALCOHOL), THIS WILL HELP TO AVOID POSSIBLE DAMAGE TO ENGINE FUEL LINES AND OTHER ENGINE PARTS.

DO NOT MIX GASOLINE AND OIL DIRECTLY IN THE ENGINE FUEL TANK.

IMPORTANT: Failure to follow proper fuel mix instructions could result in serious damage to the engine.

CAUTION:

When preparing fuel mixture, mix only the amount needed for the job you are to do. **Do not** use fuel mixture that has been stored longer than **two (2) months**. Fuel mixture stored longer than this will cause hard starting and poor performance. If fuel mix has been stored longer than this time it should be removed and filled with a fresh mixture.

CAUTION! NEVER fill the fuel tank to the inlet Port level.

NEVER add fuel to the tank in a closed un-ventilated area.

DO NOT add fuel to this unit close to an open fire or sparks.

BE SURE to wipe off spilled fuel before attempting to start the engine.

DO NOT attempt to refuel an extremely hot engine.

Check points before operation

CHECK for loose bolts, nuts and fittings.

CHECK the air cleaner for dirt. Clean the air filter of all dirt, etc. before the operation.

ENGINE STARTING PROCEDURE

1. Put throttle lever in idling (low-speed) position. Figure 14.
2. Push primer pump until peep window in carburetor becomes green. Figure 13.
3. Pull Recoil Starter lightly several times, and allow Fuel to be Pulled in. And, then pull with force. Engine will start.
4. If red appears in the window this would indicate overprime, Grasp Throttle Lever and hold open to high speed while Pulling recoil STARTER Several times to overcome the overprime conditions.

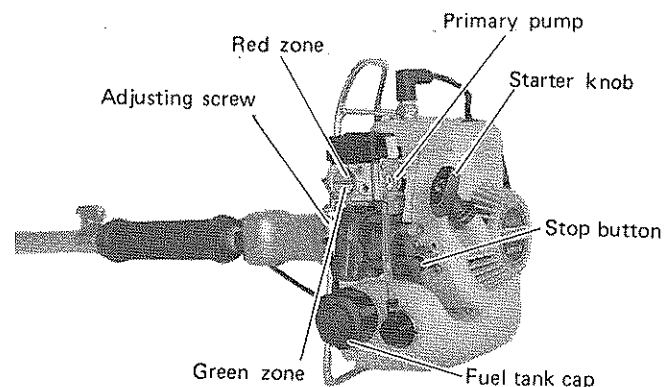


Figure 13

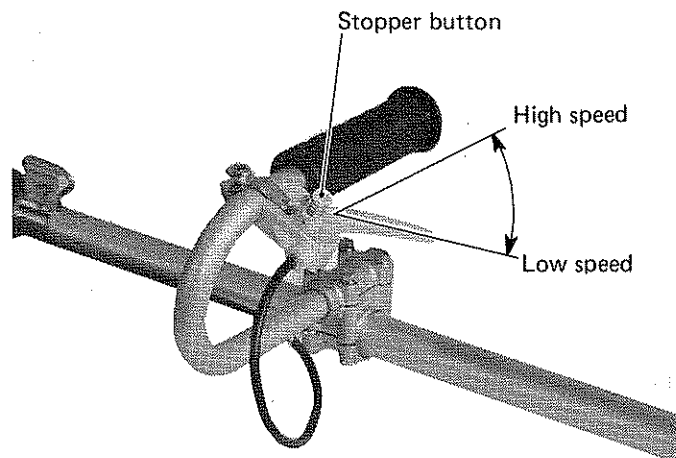


Figure 14

CAUTION: Gradually return the starter knob...

DO NOT LET IT SNAP BACK! Pull the rope in the direction of the starter rotation. **DO NOT** pull the starter rope all the way out of the drum.

- Let the engine warm up by running it at a low rpm (slow speed) for approximately two or three minutes. **NOTE: DO NOT HAVE THE ENGINE UNDER LOAD DURING THE WARM UP PERIOD.**

CAUTION!

NEVER OPERATE THE ENGINE AT HIGH RPM WITHOUT LOAD. With throttle fully opened and no load, the engine rpm will be very high which can have an adverse effect on the life of the engine.

Stopping the Engine

- Reduce the engine rpm to idle.
- Stop the engine by pushing the stop button. Figure 13.

Adjustments

SPARK PLUG MAINTENANCE — If the spark plug electrode area has an excess of carbon buildup, the efficiency of the plug will be seriously reduced. REMOVE THE CARBON WITH A SPARK PLUG CLEANER OR WIRE BRUSH.

After cleaning the spark plug RESET THE ELECTRODE GAP TO .025" (0.6 to 0.7 mm)

Carburetor

Proper adjustment of the carburetor is very important to the operation of this engine. The carburetor has been carefully adjusted at the factory and therefore should not require any further adjustment.

Preventative Maintenance Check List and Storage Tips

Be sure the engine and all other parts are clean.

Check all nuts, bolts, screws, etc. making sure they are tightened and secured.

Inspect carefully for any fuel or oil leaks.

Check the air cleaner assembly for excessive dust or dirt. If the filter requires cleaning, use the following procedure: Remove the filter and wash in soap and water or blow off with compressed air. **DO NOT** clean filter in gasoline or other flammable solvent.

Tips for Long Storage

Drain all fuel from the fuel tank and carburetor. Remove spark plug, pour a teaspoon of oil through the plug hole. Rotate the crankshaft several times by pulling the starter handle slowly. Replace the spark plug and proceed with storage.

BRUSH CUTTER APPLICATION

CAUTION:

Hanging band must be worn, and both hands kept on the handlebar grips at all times during brush cutter operation. Positive control is mandatory for safe operation. **DO NOT EDGE WITH METAL BLADE!**

FUJI ROBIN BLADES AND THE RANGE OF THEIR APPLICATIONS

Applicable to Type of blade	Grass	Pasture	Rice & barley plant	Shrub	Tree	Bamboo & bamboo grass
Disk saw	○	○	⊗	⊗	⊗	⊗
Eddy blade	⊗	⊗	⊗	X	X	X
Star blade	⊗	⊗	△	X	X	X
Safety blade	○	△	X	X	X	X

Note 1) Do not use either star blade or eddy blade in the place where there are many trees.

2) Be sure to use the proper blade specified by our company.

⊗ Most applicable

○ Applicable

△ Partly applicable

X Not applicable

Emergency measure during operation

In case of emergency, pull the detaching belt upward strongly and the machine will be detached from the body.

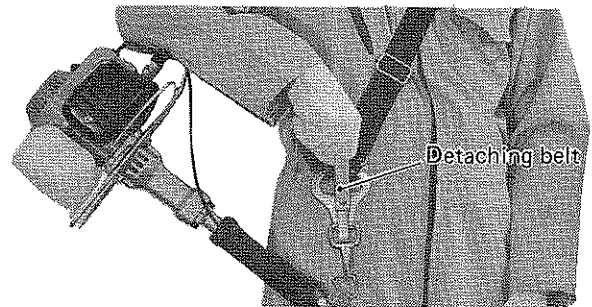


Figure 15

LUBRICATION

The engine is self lubricating through the fuel mix and therefore does not need additional attention to its lubrication.

The gear box does require lubrication as a preventative maintenance measure.

Every 30 hours remove bolt from side of gear box and fill with grease. Figure 16.

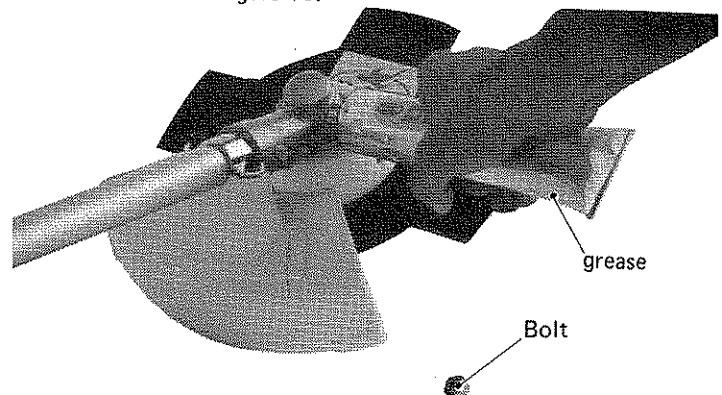
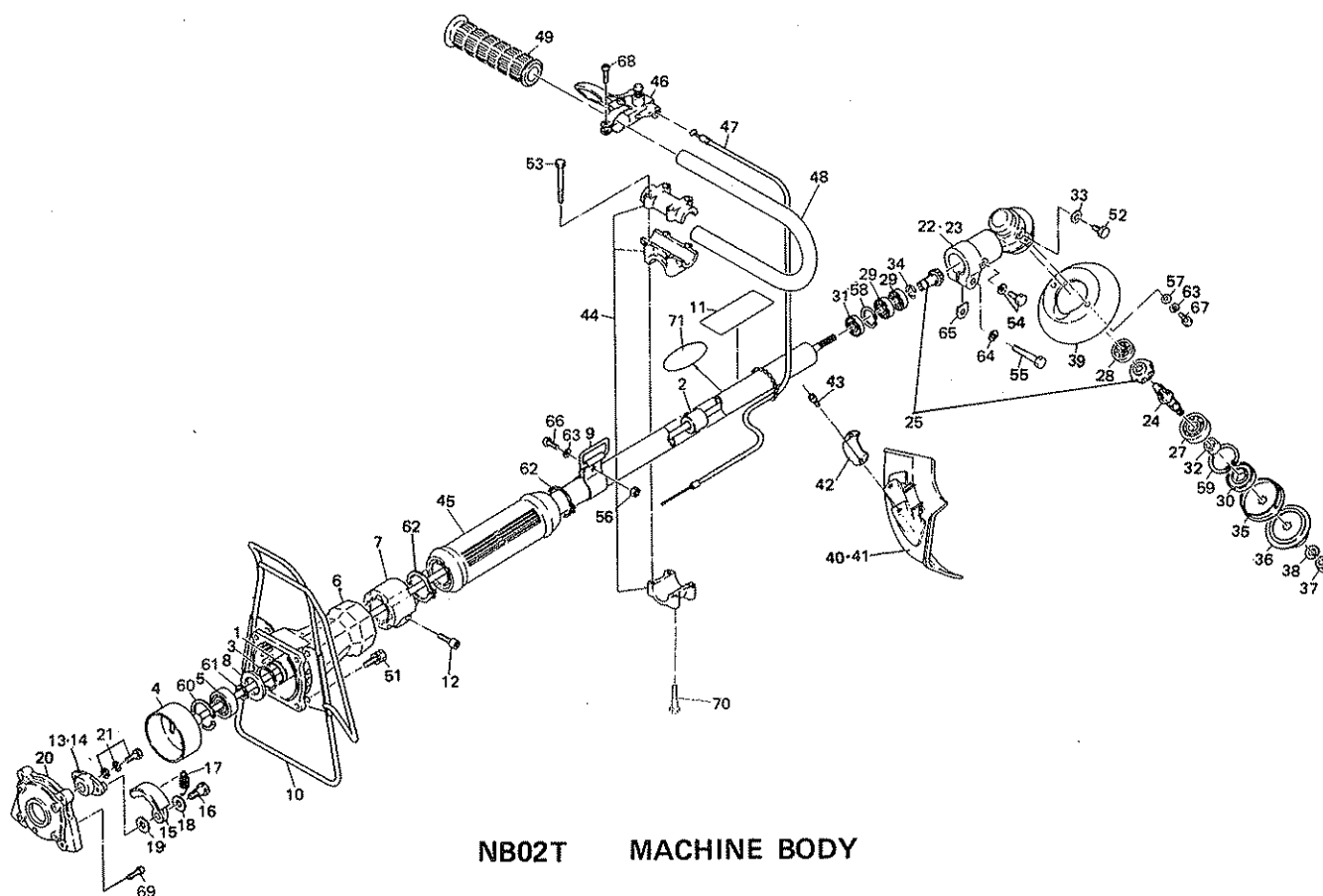


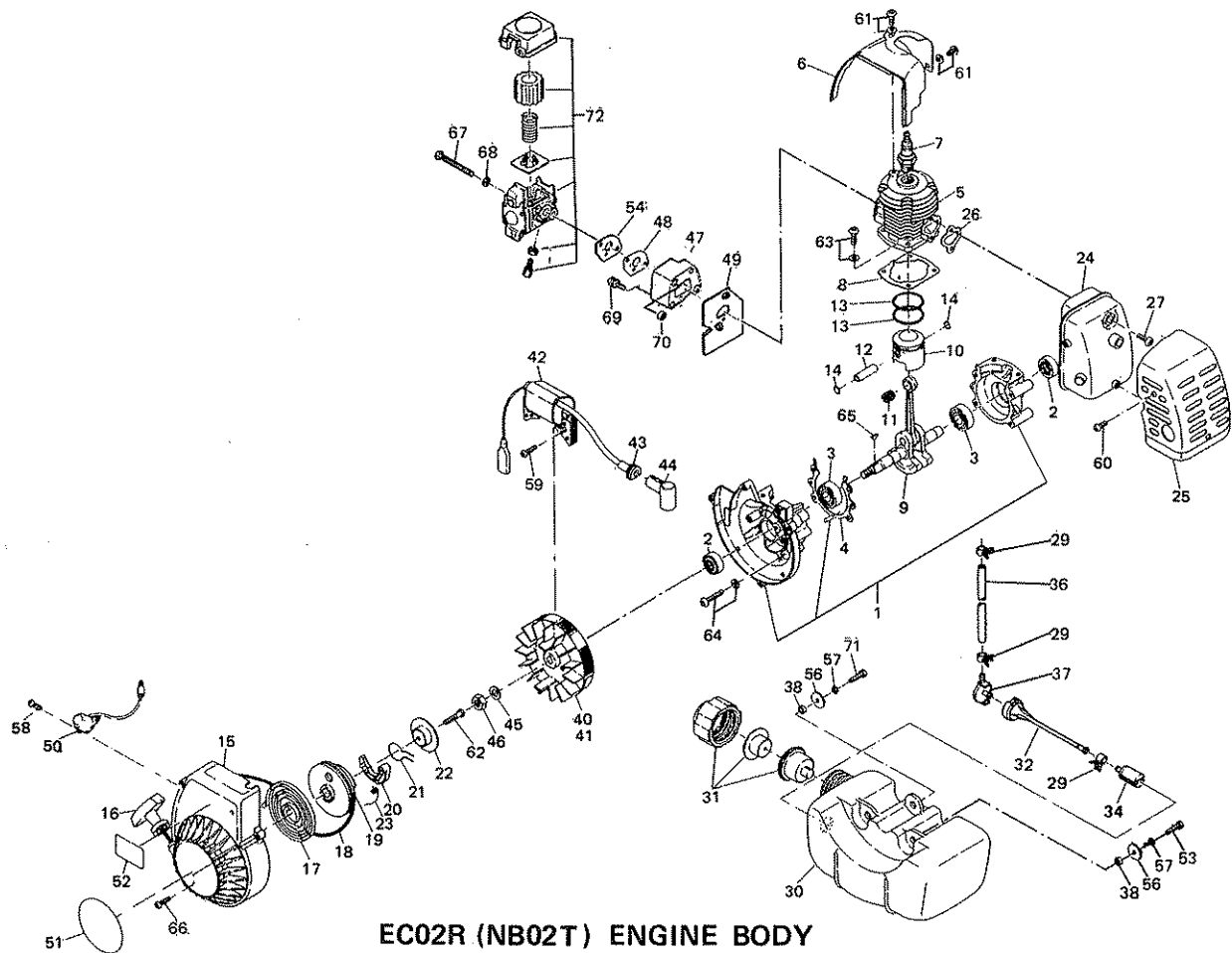
Figure 16



NB02T MACHINE BODY

REPLACEMENT PARTS LIST

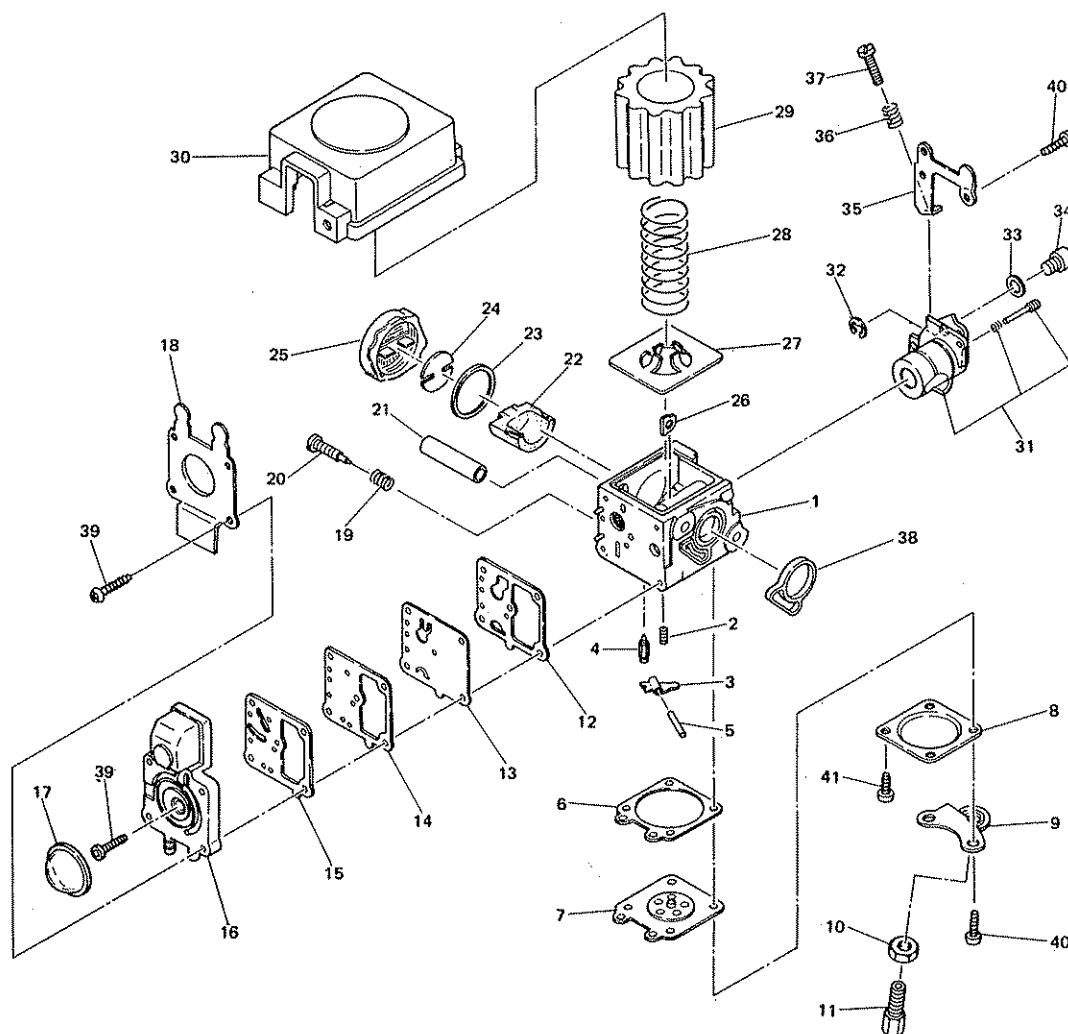
KEY NO.	MFG. PART NO.	U.S. PART NO.	QTY.	DESCRIPTION	KEY NO.	MFG. PART NO.	U.S. PART NO.	QTY.	DESCRIPTION
1	NB23-1001C	8000	1	Pipe case ass'y (incl. 2, 3)	36	NB25-8102/1A	8028	1	Disk washer (lower)
2	NB23-1051A	8001	5	Bearing compl.	37	NB25-8106	8029	1	Nut
3	NB23-1104	8002	1	Snap ring (outer)	38	0203 08999 0	1440	1	Spring washer
4	NB25-1002C	8003	1	Long shaft ass'y (incl. 5, 61, 62)	39	NB25-8105B	8030	1	Guard
5	NB25-2115	1688	1	Ball bearing	40	NB25-8010D	3312	1	Safety cover ass'y (incl. 41~43)
6	NB23-1111	8004	1	Pipe case holder	41	NB25-8120A	8032	1	Safety cover
7	NB23-1052D	8005	1	Stopper compl.	42	NB25-8121	8033	1	Cover clamping fixture
8	NB25-1113B	8006	1	Washer	43	0119 05 9850	3313	2	Bolt (socket head)
9	NB23-7051	8007	1	Hanger compl.	44	NB25-80110	8034	1	Handle joint ass'y (incl. 53, 64)
10	NB02A-0531C	8008	1	Stand compl.	45	NB02A-1131B	8035	1	Grip (pipe case)
11	NB40-9149	9081	1	Prolabel	46	NB26-5055	8148	1	Throttle lever ass'y
12	0119 05988 0	8009	1	Bolt (socket head)	47	NB31-5051B	8149	1	Throttle wire compl.
13	NB22-2051A	3135	1	Clutch compl. (incl. 14 ~ 19)	48	NB02A-401B	1153	1	Handle
14	NB02A-201A	1662	1	Holder	49	NB25-4103	8037	1	Grip
15	NB26-2102	3136	2	Clutch shoe	51	00116 0620 0	8040	4	Bolt ass'y (cross-recessed)
16	NB26-2103	3137	2	Clutch bolt	52	NB21-3116	8150	1	Bolt
17	NB25-2104A	8014	1	Spring	53	0119 05984 0	8151	4	Bolt (socket head)
18	NB02A-206	1143	2	Washer (A)	54	00143 0612 0	1388	1	Bolt ass'y
19	NB02A-207	1144	2	Washer (B)	55	00166 0630 0	8044	1	Bolt
20	NB25-5103A	8145	1	Locating plate	56	00227 0500 0	1703	1	Nut
21	NB23-2001	1147	1	Holder clamping bolt	57	00310 0500 0	1183	2	Washer
22	NB23-0301	8015	1	Head case unit (incl. 23~38, 52, 54, 55, 58, 59, 60, 65)	58	00314 2400 0	1187	1	Snap ring (inner)
23	NB23-3101/2	8016	1	Gear case	59	00314 3000 0	1188	1	Snap ring (inner)
24	NB31-3102	8146	1	Cutter shaft	60	00314 3200 0	1189	1	Snap ring (inner)
25	NB31-3051	8147	1	Gear set	61	00315 1200 0	1398	1	Snap ring (outer)
27	NB25-3110	8019	1	Ball bearing	62	00315 2800 0	1396	2	Snap ring (outer)
28	NB25-3111	8020	1	Ball bearing	63	00320 0500 0	1286	1	Spring washer
29	NB25-3112	8021	2	Ball bearing	64	00320 0600 0	1294	2	Spring washer
30	NB25-3113	8022	1	Oil seal	65	00371 1000 0	8045	1	Gasket (fiber)
31	NB25-3114	8023	1	Oil seal	66	00431 0514 0	8152	1	Screw (pan head)
32	NB25-3115B	8024	1	Collar (oil seal)	67	00431 0516 0	1074	2	Screw (pan head)
33	0211 06001 0	8025	1	Gasket	68	00431 0520 0	1402	1	Screw (pan head)
34	NB25-3117	8026	1	Snap ring (outer)	69	EC02-8516	1353	4	Plus and minus screw ass'y SW
35	NB25-8101B	8027	1	Disk washer (upper)	70	0119 05989 0		4	Bolt (socket head)
					71	NB23-9124	9082	1	Label



EC02R (NB02T) ENGINE BODY

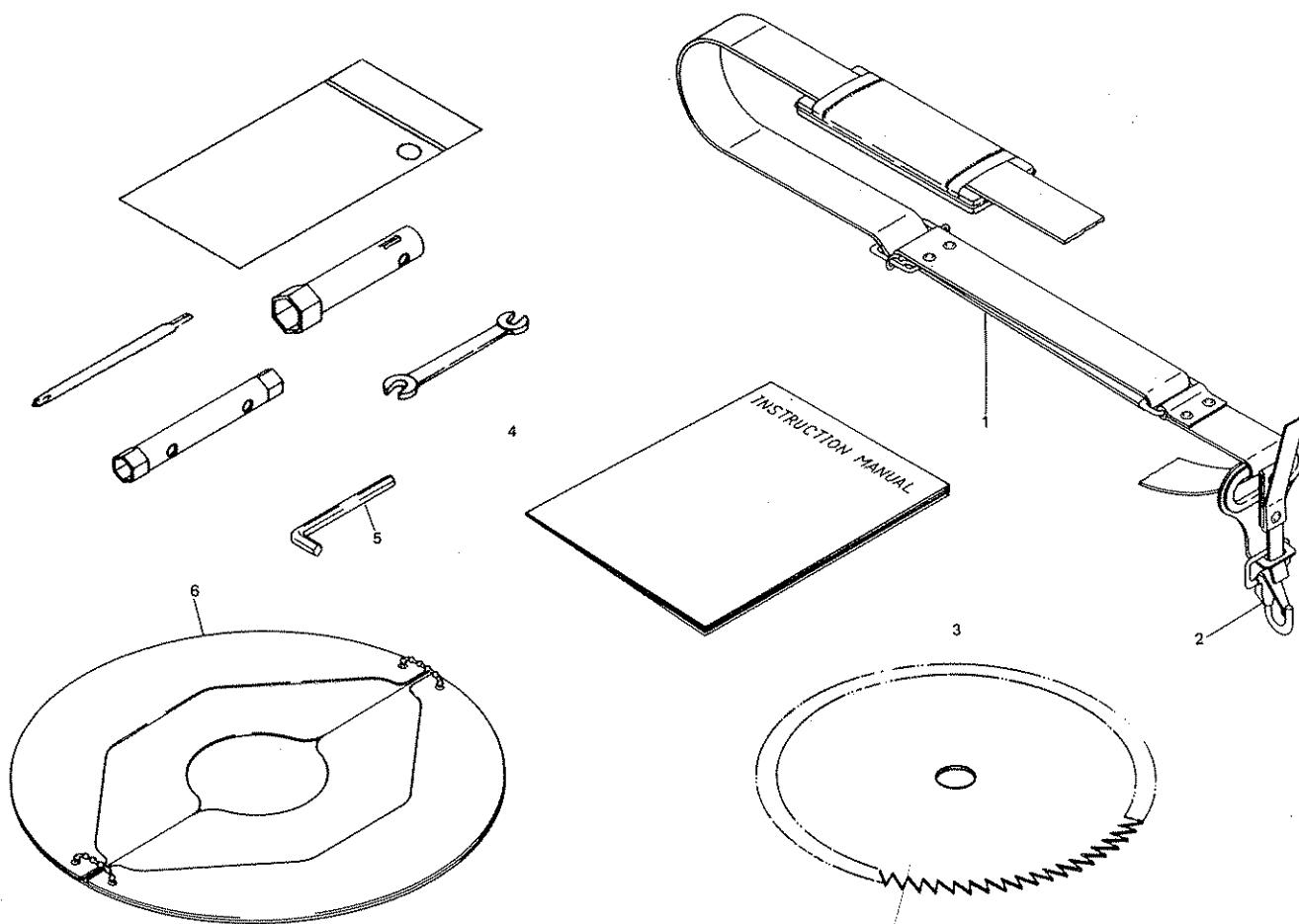
REPLACEMENT PARTS LIST

KEY NO.	MFG. PART NO.	U.S. PART NO.	QTY.	DESCRIPTION	KEY NO.	MFG. PART NO.	U.S. PART NO.	QTY.	DESCRIPTION
1	EC02-006	1001	1	Crank case compl. (incl. 2 ~ 4)	38	0230 06999 1	3031	3	Spacer
2	0440 12999 1	1002	2	Oil seal (EC03-111A Tc12227)	40	EC02-0799 B	8051	1	Magneto compl. (incl. 41, 42)
3	0600 12992 0	1003	2	Ball bearing (EC02-130 6001 C ₃)	41	4M-72191	8139	1	Flywheel
4	EC02-120B	1004	1	Crank case packing	42	4M-50466	8053	1	Ignition coil
5	EC02-110K	8046	1	Cylinder	43	0241 05998 6	8054	1	Gromet (EC02-705F)
6	EC02-501E-G	8047	1	Cylinder cover	44	EC02-0908	1051	1	Plug cap compl.
7	0650 14981 0	1007	1	Spark plug	45	0203 08999 0	1440	1	Spring washer (left)
8	EC02-121C	1008	1	Cylinder packing	46	0170 08996 0	3032	1	Nut (left)
9	EC02-088B	8153	1	Crank shaft compl.	47	EC02-6415A	8132	1	Heat insulator
10	EC02-221E	1011	1	Piston	48	EC02-3112	3122	1	Gasket (spacer)
11	0610 08999 0	1012	1	Needle bearing (EC02-231)	49	EC02-3113	8131	1	Heat insulator packing (cylinder)
12	EC02F-2033	8154	1	Piston pin	50	EC04-0713B	8155	1	Stop button compl.
13	TG02-207A	1014	2	Piston ring	51	NB23-9171/1	8059	1	Label (NB02T)
14	0565 07999 0	1015	2	Clip (EC02-220)	52	EC02-912	3035	1	Label (caution)
15	EC02-0598A-G	1640	1	Recoil starter compl. (incl. 16 ~ 23, 62)	53	00170 05160	1425	2	Bolt (cross recessed)
16	A57200100001	1018	1	Starter knob	54	EC02-6707	3123	1	Spacer
17	A60002600000	1020	1	Spiral spring	56	00312 0500 0	1429	3	Washer
18	A57100890000	1021	1	Starter rope	57	00320 0500 0	1286	3	Spring washer
19	A54102600100	1721	1	Reel	58	EC02-7406	8156	2	Plus & minus screw
20	A55002610000	1023	1	Ratchet	59	EC02-9420	3314	2	Plug & minus screw ass'y SW.W
21	A60102600000	1024	1	Friction spring	60	014005996 0	8157	3	Screw
22	A56002600110	1026	1	Friction plate	61	EC02G-8508	8158	2	Plus & minus screw ass'y W
23	A60503210000	1605	1	Return spring	62	00431 0512 0	1442	1	Screw
24	EC02-015B-TA	3028	1	Muffler ass'y	63	EC02-8516	3152	4	Plus & minus screw ass'y SW
25	EC02-3004-SA	3029	1	Muffler cover	64	EC02-8525	8160	4	Plug & minus screw ass'y SW
26	EC02-315B	1646	1	Muffler gasket	65	00532 0310 0	1077	1	Woodruff key
27	0119-05995-0	1223	2	Screw (socket head)	66	EC02-7516	8159	3	Plus & minus screw
29	EC01A-6070	3114	3	Hose clamp	67	EC02-7450	8133	2	Plus & minus screw
30	EC02-6001A	1655	1	Fuel tank	68	00311 0400 0	1113	2	Washer
31	EC02-0669C	8050	1	Fuel tank cap compl.	69	EC02-9522	8134	2	Plus & minus screw ass'y SW.W
32	EC03F-6101B	3111	1	Rubber tube	70	00217 0400 0	8135	2	Nut M4
34	EC01A-6040	3112	1	Filter	71	00170 05120	1425	1	Bolt (cross recessed)
36	EC02-6101B	3115	2	Fuel pipe	72	EC02-0686B	8103	1	Carburetor ass'y
37	EC03F-6130A	3113	1	Connector (fuel)					



EC02R (NB02T) CARBURETOR REPLACEMENT PARTS LIST

KEY NO.	MFG. PART NO.	U.S. PART NO.	QTY.	DESCRIPTION	KEY NO.	MFG. PART NO.	U.S. PART NO.	QTY.	DESCRIPTION
1	EC02-0686B	8103	1	Carburetor Compl.	27	157-250	3119	1	Plate-cleaner
2	98-189	3177	1	Spring-metering lever	28	98-3018	8113	1	Spring-filter
3	166-48	3193	1	Lever-Metering	29	125-50	3117	1	Filter-air
4	82-67	3165	1	Valve-inlet needle	30	21-419	3116	1	Cover-air cleaner
5	144-77	3189	1	Pin-metering lever	31	34-523	8114	1	Valve ass'y-throttle
6	92-146	3166	1	Gasket-metering diaphragm	32	16-71	8115	1	Ring-spring retaining
7	95-526	3171	1	Diaphragm ass'y-metering	33	136-90	8116	1	Washer
8	21-158	3206	1	Cover-metering diaphragm	34	52-18	8117	1	Swivel
9	167-86	3198	1	Bracket-cable	35	167-94	8118	1	Bracket-idle screw
10	134-57	3126	1	Nut-cable ADJ	36	98-323	8119	1	Spring-idle ADJ
11	96-304	3120	1	Screw-cable ADJ	37	96-314	3311	1	Screw-idle ADJ
12	92-223	3167	1	Gasket-pump	38	16-101	8120	1	Ring-packing
13	95-88	3170	1	Diaphragm-pump	39	96-295	3172	5	Screw-pump cover
14	157-275	3192	1	Plate-pump	40	96-316	3175	4	Screw
15	92-250	3169	1	Gasket-plate	41	96-296	3173	2	Screw-metering cover
16	21-790	3160	1	Cover Ass'y-pump					
17	188-11	3197	1	Primer-pump					
18	167-88	3194	1	Bracket-primer pump					
19	98-438	3179	1	Spring-high speed needle					
20	102-328	3181	1	Needle-high speed					
21	122-157	8107	2	Sleeve-mounting					
22	125-53	8108	1	Filter-wick					
23	92-242	8109	1	Gasket-intake cap					
24	157-292	8110	1	Plate-wick					
25	25-71	8111	1	Cap-intake					
26	157-263	8112	2	Plate-mounting sleeve					



EC02R (NB02T) ACCESSORIES **REPLACEMENT PARTS LIST**

KEY NO.	MFG. PART NO.	U.S. PART NO.	QTY.	DESCRIPTION
1	NB23-7002	3315	1	Shoulder harness (incl. 2)
2	NB31-7102	1406	1	Hook
3	OB13-407B	NB02-95	1	Disk saw
4	NB25-9001B	8095	1	Tool kit (incl. 5)
5	0717 04999 0	8096	1	Wrench (socket head)
6	NB25-8001B	8097	1	Blade cover

MEMO

MEMO

LIMITED TWO YEAR WARRANTY

Carswell Import & Marketing Associates, Inc. (hereafter CIMA), sales agent for FujiRobin Industries, Ltd. warrants each new Robin brush cutter for twenty-four (24) months according to the following terms.

This warranty extends to the original retail purchaser only and commences on the date of original retail purchase.

Any part of Robin brush cutter supplied by CIMA and found in the reasonable judgment of an Authorized Robin Service Center to be defective in material or workmanship will be repaired by an Authorized Robin Service Dealer without charge for parts and labor.

The Robin brush cutter including any defective part must be returned to an Authorized Robin Service Dealer within the warranty period. The expense of delivering the Robin brush cutter to the dealer for warranty work and the expense of returning it back to the owner after repair or replacement will be paid for by the owner.

CIMA's responsibility in respect to claims is limited to making the required repairs or replacements and no claim of breach of warranty shall be cause for cancellation or rescission of the contract of sale of any Robin brush cutter. Proof of purchase will be required by the dealer to substantiate any warranty claim. All warranty work should be performed by an Authorized Robin Service Dealer.

This warranty is limited to ninety (90) days from the date of original retail purchase for any Robin brush cutter that is used for rental or commercial purposes, or any other income-producing purpose.

This warranty does not cover any Robin brush cutter that has been subject to misuse, neglect, negligence, or accident, or that has been operated in any way contrary to the operating instructions as specified in the Robin Operator's Manual. The warranty does not apply to any damage to the Robin brush cutter that is the result of improper maintenance or to any Robin brush cutter or parts that have not been assembled or installed as specified in the Robin Operator's Manual. The warranty does not cover any Robin brush cutter that has been altered or modified so as to adversely affect the product's operation, performance or durability or that has been altered or modified so as to change its intended use. In addition, the warranty does not extend to repairs made necessary by normal wear, or by the use of parts or accessories which are either incompatible with the Robin brush cutter or adversely affect its operation, performance or durability.

Robin reserves the right to change or improve the design of any Robin brush cutter without assuming any obligation to modify any brush cutter previously manufactured.

ALL IMPLIED WARRANTIES ARE LIMITED IN DURATION TO THE TWENTY-FOUR (24) MONTHS WARRANTY PERIOD OR NINETY (90) DAYS FOR BRUSH CUTTERS USED FOR ANY INCOME-PRODUCING PURPOSE. ACCORDINGLY, ANY SUCH IMPLIED WARRANTIES INCLUDING MERCHANTABILITY, FITNESS FOR A PARTICULAR PURPOSE, OR OTHERWISE, ARE DISCLAIMED IN THEIR ENTIRETY AFTER THE EXPIRATION OF THE APPROPRIATE TWENTY-FOUR (24) MONTHS OR NINETY (90) DAYS WARRANTY PERIOD.

CIMA'S OBLIGATION UNDER THIS WARRANTY, IS STRICTLY AND EXCLUSIVELY LIMITED TO THE REPAIR OR REPLACEMENT OF DEFECTIVE PARTS, AND CIMA DOES NOT ASSUME OR AUTHORIZE ANYONE TO ASSUME FOR THEM ANY OTHER OBLIGATION. SOME STATES DO NOT ALLOW LIMITATIONS ON HOW LONG AN IMPLIED WARRANTY LASTS, SO THE ABOVE LIMITATION MAY NOT APPLY TO YOU.

CIMA ASSUMES NO RESPONSIBILITY FOR INCIDENTAL, CONSEQUENTIAL OR OTHER DAMAGES INCLUDING, BUT NOT LIMITED TO, EXPENSE FOR GASOLINE, EXPENSE OF RETURNING THE ROBIN BRUSH CUTTER TO AUTHORIZED SERVICE DEALER AND EXPENSE OF DELIVERING IT BACK TO THE OWNER, MECHANIC'S TRAVEL TIME, TELEPHONE OR TELEGRAM CHARGES, RENTAL OF A LIKE PRODUCT DURING THE TIME WARRANTY SERVICE IS BEING PERFORMED, TRAVEL, LOSS OR DAMAGE TO PERSONAL PROPERTY, LOSS OF REVENUE, LOSS OF THE BRUSH CUTTER, LOSS OF TIME, OR INCONVENIENCE. SOME STATES DO NOT ALLOW THE EXCLUSION OR LIMITATION OF INCIDENTAL OR CONSEQUENTIAL DAMAGES, SO THE ABOVE LIMITATION OR EXCLUSION MAY NOT APPLY TO YOU.

This warranty gives you specific legal rights, and you may also have other rights which vary from state to state.

This warranty applies to Robin brush cutter sold by CIMA in the United States. To validate this warranty original purchaser must complete the attached Warranty Registration Form and return it within ten (10) days of purchase.

CARSWELL IMPORT
AND MARKETING ASSOCIATES, INC.
WINSTON-SALEM, NORTH CAROLINA 27115

FujiRobin Industries, Ltd.
Shinjuku-ku, Tokyo, Japan

WARRANTY SERVICE

Warranty service can be performed by an Authorized Robin Service Dealer regardless of whether the consumer purchased the Robin product originally from that dealer. However, we recommend you first contact the original dealer who sold you the product. Remember, it is your responsibility to deliver your Robin product along with proof of purchase to the dealer within the warranty period, and all work must be performed by an Authorized Robin Service Dealer.

Example of Parts and Service not covered by Warranty

Normal service requirements occurring during the warranty period such as carburetor or ignition adjustment.

Normal service over and above repair or replacement of defective parts.

Repair or maintenance service due to normal wear, improper maintenance, misuse, neglect, negligence, accident, also alternations or modifications which adversely affect product's performance, durability, or change their intended use.

Repairs or maintenance made necessary due to use of parts or accessories which are not compatible with Robin products or adversely affect its operation, performance, or durability.

Products not operated or maintained in accordance with the Instruction Manual.

Normal cleaning, lubrication, adjustments, or replacement of such items as spark plugs, filters, ignition points, etc.

Expense of delivering the product to an Authorized Service Dealer or of returning such products, or mechanics travel time, or cost of any rental of a like product during the period warranty service is being performed.

Warranty applies only to original retail purchaser.

Owner's Obligation and Responsibility —

It is the responsibility of the owner to provide for normal maintenance service and replacement of service items and to maintain all components in proper adjustment. These are not considered defects in material or workmanship. Individual operation and application determine the need for normal maintenance service.

Robin Warranty Registration

Owner's Name _____

Address _____

City State Zip

Dealer's Name _____

Address _____

City State Zip

Date of Purchase _____

Model No. _____ Serial No. _____

This Registration Form must be completed and returned within ten (10) days of purchase.

(Detach and Mail)

From _____

PLACE
STAMP
HERE

CIM CARSWELL IMPORT &
MARKETING ASSOCIATES, INC.
P.O. Box 16221, Winston-Salem, N.C. 27115



FUJI ROBIN INDUSTRIES LTD.