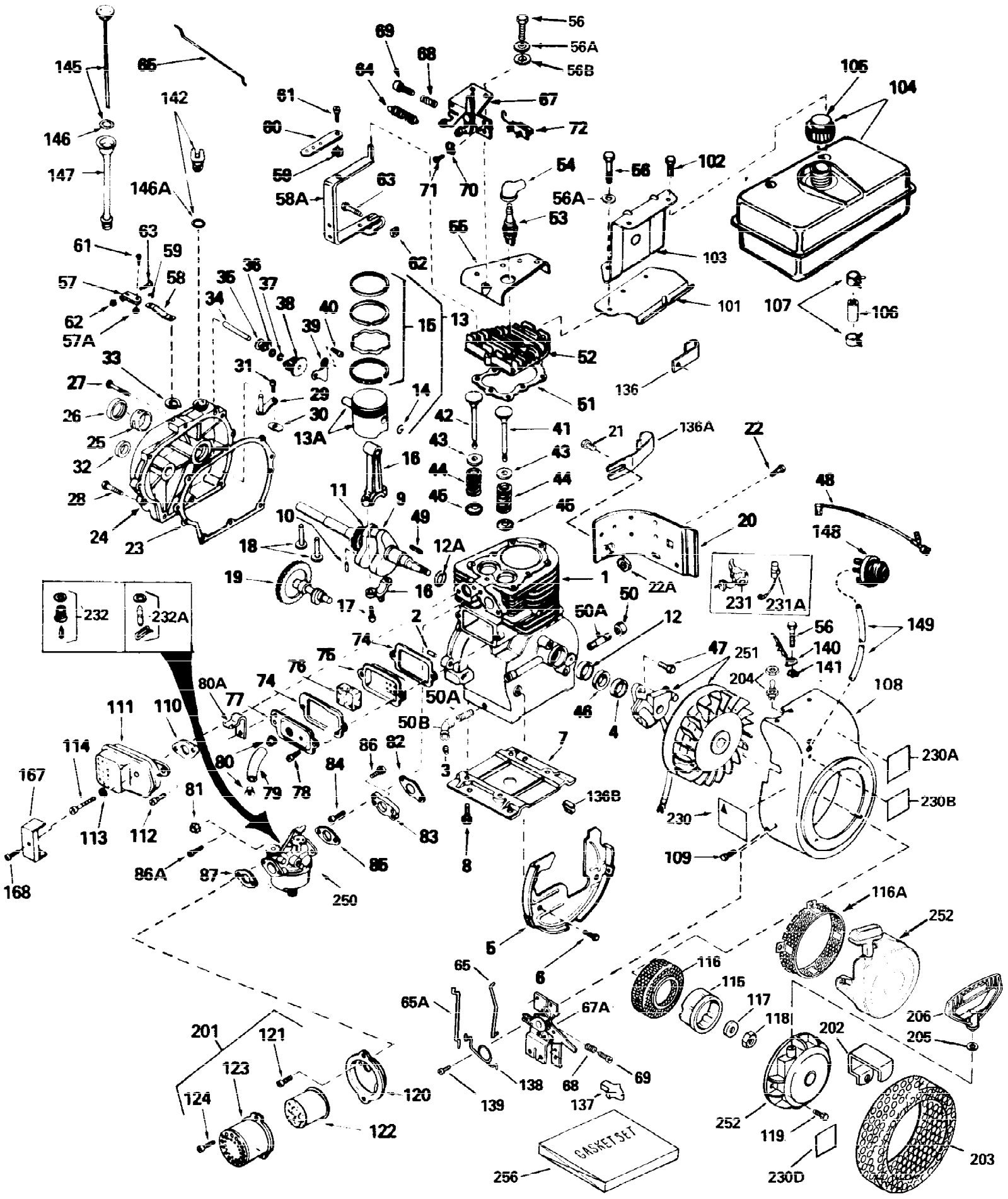


ILLUSTRATION SHOWS TYPICAL PARTS ONLY. ORDER BY PART NUMBER. PARTS NOT LISTED ARE SUPPLIED BY OEM.



Ref #	Part Number	Qty	Description
1	34919A		Cylinder (Incl. 2,3 & 4) (2-5/8" Bore)
2	27652		Pin, Dowel
3	27642		Pipe plug, 1/4-18
4	32630		Seal, Oil
5	29536		Blower Housing Baffle (Without electric starter knock out) (Use as required)
5	35256A		Blower Housing Baffle (With electric starter knockout) (As req.)(point ign.)
6	650561		Screw, 1/4-20 x 5/8"
7	29538		Base, Engine mounting
8	650542		Screw, 5/16-18 x 3/4"
9	34885		Crankshaft
10	29783		Pin, Crankshaft gear (Used on early p rod.)
11	27884		Gear, Crankshaft (Used on early produ ction) This gear is serviceable ONLY when it is pinned to the crankshaft.
13	34531		Piston, Pin & Ring Set (Std.) (2-5/8" Bore)
13	34532		Piston, Pin & Ring Set (.010" OS)
13	34533		Piston, Pin & Ring Set (.020" OS)
13A	33312B		Piston & Pin Ass'y. (Std.)(2-5/8")(In cl.14)
13A	33313B		Piston & Pin Ass'y. (.010" OS) (Incl. 14)
13A	33314B		Piston & Pin Ass'y. (.020" OS) (Incl. 14)
14	27888		Ring, Piston pin retaining
15	34854		Ring Set (Std.) (2-5/8" Bore)
15	34855		Ring Set (.010" OS)
15	34856		Ring Set (.020" OS)
16	31295C		Rod Assy., Connecting (Incl. 17)
17	650662C		Bolt, Connecting rod (Incl. 2 pieces)
18	34034		Lifter, Valve
19	33156		Camshaft
20	30622A		Extension, Blower housing
21	650128		Screw, 10-24 x 1/2"
22	650561		Screw, 1/4-20 x 5/8" (Use as required)
22	30063		Screw, 1/4-20 x 1/2" (Use as required)
23	30684		Gasket Cylinder Cover
24	31451A		Cylinder Cover (Incl.26, 34, 127A, 12 9 & 130)
26	28460		Seal, Oil
27	650488		Screw, 1/4-20 x 1-1/4"
28	650493		Screw, 1/4-20 x 1-3/4"
29	30699C		Rod Assy., Governor (Incl. 30 & 31)
30	30700		Yoke, Governor
31	650494		Screw, 6-40 x 5/16"
33	29642		Ring, Retaining
34	31845		Shaft, Mechanical governor
35	30588A		Spool, Governor
36	35479		Washer, Flat
37	29193		Ring, Retaining
38	30591		Gear Assy., Governor
39	31843A		Bracket, Governor gear
40	650836		Screw, 10-24 x 1/2"
41	32783		Intake Valve (Std.)
41	32784		Intake Valve (1/32" OS)
42	27878A		Exhaust Valve (Std.)
42	27880A		Exhaust Valve (1/32" OS)

Ref #	Part Number	Qty	Description
43	27882		Cap, Upper valve spring
44	27881		Spring, valve
45	32581		Cap, Lower valve spring
46	33876		Gasket, Stator
47	650489		Screw, 1/4-20 x 5/8"
49	32589		Key, Flywheel
51	28938C		Gasket, Cylinder head
52	30938A		Head, Cylinder
53	34251		Resistor Spark Plug (RJ-17LM)
54	610118		Cover, Spark plug (Use as required)
55	30939A		Cover Assy., Cylinder head
56	650697A		Screw, 5/16-18 x 2-1/2" (Use as required)
56	650694A		Screw, 5/16-18 x 2" (Use as required)
56	650695A		Screw, 5/16-18 x 2-1/4" (Use as required)
56A	650691		Washer, Flat (Use as required)
56B	650690		Washer, Belleville (Use as required)
57	29916		Clamp, Governor lever (Use as required)
57A	30322		Locknut, 8-32
58	33454		Lever Assy., Governor
59	29918		Washer, Lock, No. 8 E.T.
61	650548		Screw, 8-32 x 5/16"
62	29216		Locknut, 10-32
63	29826		Screw, 10-32 x 3/4"
65	34662		Link, Throttle
65A	34661		Link, Governor
67A	34677		Control Bracket (Incl. 68, 69, 72 & 138)
68	31342		Spring, Compression
69	650549		Screw, 5-40 x 7/16"
72	610973		Terminal Assy. (Use as required)
74	27896A		Gasket, Valve chamber cover
75	28423		Breather Assy., Valve
76	28424		Element, Breather
77	28425		Cover, Valve spring box
78	650128		Screw, 10-24 x 1/2"
79	35350		Tube Breather
82	27915A		* Gasket, Intake pipe to cylinder
83	34712		Flange, Carburetor (Incl. 86A)
84	30196		Screw, 5/16-18 x 3/4"
85	31688A		* Gasket, Carburetor
86A	650517		Screw, 1/4-20 x 13/16"
87	27272A		* Air Cleaner Gasket (Use as required)
87	30767		Spacer, Cleaner (Use as required)
94A	34819		Elbow Assy., Air cleaner (Incl. 90,91,92,93,94,96) (Use in 730561 assembly only)
101	34158		Bracket, Fuel tank
102	650665		Screw, 1/4-14 x 7/8"
103	34159		Plate, Fuel tank mounting
104	34186A		Fuel Tank (Incl. 105 & 107) NOTE: These tanks were built with different size fuel inlet openings. Tanks with the 1-3/16" I.D. opening use fuel cap 33032 or 34210. Tanks with the 1-1/2" I.D. opening use fuel cap 35355.
105	35355		Fuel Cap (Red plastic) (Use as required)
105	410144B		Fuel Cap (White Plastic)(Std.)(As required)

Ref #	Part Number	Qty	Description
105	33032		Fuel Cap (Red Plastic) (Spurt resistant, Low profile) (Use as required)
105	34210		Fuel Cap (Red Plastic) (Spurt resistant, High profile) (Use as required)
106	29774		Fuel Line (Braided, 8 1/4") (Use as required)
106	30962		Fuel Line (Braided, 32") (Use as required)
107	26460		Clamp, Fuel line (Use as required)
108	32158E		Blower Housing (For electric starter)
109	29747B		Screw, 5/16-24 x 21/32"
111C	391026		Opt. Spark Arrest Muf.(Incl.143,143A,1 43B)
111A	29633		Muffler
111D	33714		Opt. Spark Arrest Muf.(Incl.112,143,14 4,144A)
111E	34390		Deflector, Exhaust (Optional)
115	32125		Cup, Starter
116	35009		Screen, Starter cup
117	650815		Washer, Belleville
118	8116		Nut, Hex
119	29716		Screw, 1/4-28 x 7/16"
120	31691		Bracket, Air cleaner
121	28820		Screw, 10-32 x 1/2"
122	30727		Element, Air cleaner
123	31715		Body, Air cleaner
124	650152		Screw, 8-32 x 3/8"
127A	31855		Retainer, Bearing
127	31793		Bearing, Ball
128	31792		Washer, Thrust
129	650778		Washer, Lock
130	650580		Nut, Lock
137	32410		Knob, Speed control
138	34663		Spring, Speed control
139	650821		Screw, 10-32 x 1/2"
140	30747		Clip, Spark plug shorting
141	650890		Lockwasher, Shakeproof, 5/16
143A	33171		Screen, Muffler (Use as required)
143B	33185		Cover & tube, Muffler (Use as required)
143	650578		Screw, 8-18 x 3/8" (Use as required)
144A	33323		Screen, Muffler (Use as required)
144	33700		Cover & Tube, Muffler (Use as required)
145	31297		Dipstick (Incl. 146A)
146A	29673		* Gasket, Oil fill
169	32862		Nut, Conduit
170	30244		Nipple, Pipe
171	29574		Elbow, 90° Street
201A	730130		Muffler Adapter Kit (Incl.110,112)(As req.)
201B	730561		Air Cleaner Kit (Incl.74,79,80,87,88,89,90,91,92,94,95,96,97,99,100 & 230C) (Used only on engine with an externally vented fully adjustable carburetor)
201	730164		Air Cleaner Ass'y. (Red Poly)(Incl.87,120,121,122,123,124 & 230)(As req.)
201	730164		Air Cleaner Kit, Mini bike (Incl.87,120,121,122,123 & 124) (Use as required)
230B	35344		Decal, Control

Ref #	Part Number	Qty	Description
230	34346		Decal, Instruction
230	550223		Decal, Name
231	30547A		Breaker Assy (Used on Std. Point ignition)
231A	30548B		Condenser
232A	631021		Inlet, Needle Seat & Clip Assy.
240	611077		Alternator (Optional)
241	650868		Screw, 8-18 x 1-1/8" (3 required)(Opt .)
242	611078		Connector, A.C. Lighting (Optional)
242	611079		Connector, D.C. Charging (Optional)
243	590610		Tube, Centering (Optional)
244	590613		Alternator Shaft (Optional)
250	632230		Carburetor (Incl. 85) (Refer to Division 5, Section A, Page 182 for breakdown)
251	611038		Magneto NOTE: The complete magneto is not available as an assembly. The magneto number is shown for reference purposes only. Order component parts individually, as shown in parts list. (Refer to Division 5, Section B, page 39 for breakdown)
252	590420A		Rewind Starter (Refer to Division 5, Section C, page 25 for breakdown)
254	33328D		Starter Motor Kit (110-120 volt) This 110-120 volt starter motor kit may have been added to this engine. It can be added only if cylinder has drilled and tapped starter mounting bosses and a ring gear flywheel (see#255). Refer to service number stamped on end cap of motor or on decal for identification
255	30811A		Flywheel (Ring gear flywheel required on engines using 110-120 volt starter motor kits listed above) (Used on Std. point ignition before 1982)
255	611042		Flywheel (Ring gear flywheel required on engines using 110-120 volt starter motor kits listed above) (Used on Std. point ignition 1982 or later)
255	611085		Flywheel (Minimum ring gear flywheel required on engines using 110-120 volt starter motor kits listed above) (Used on solid state external ignition)
256	33235A		Gasket Set (Incl. items marked*)