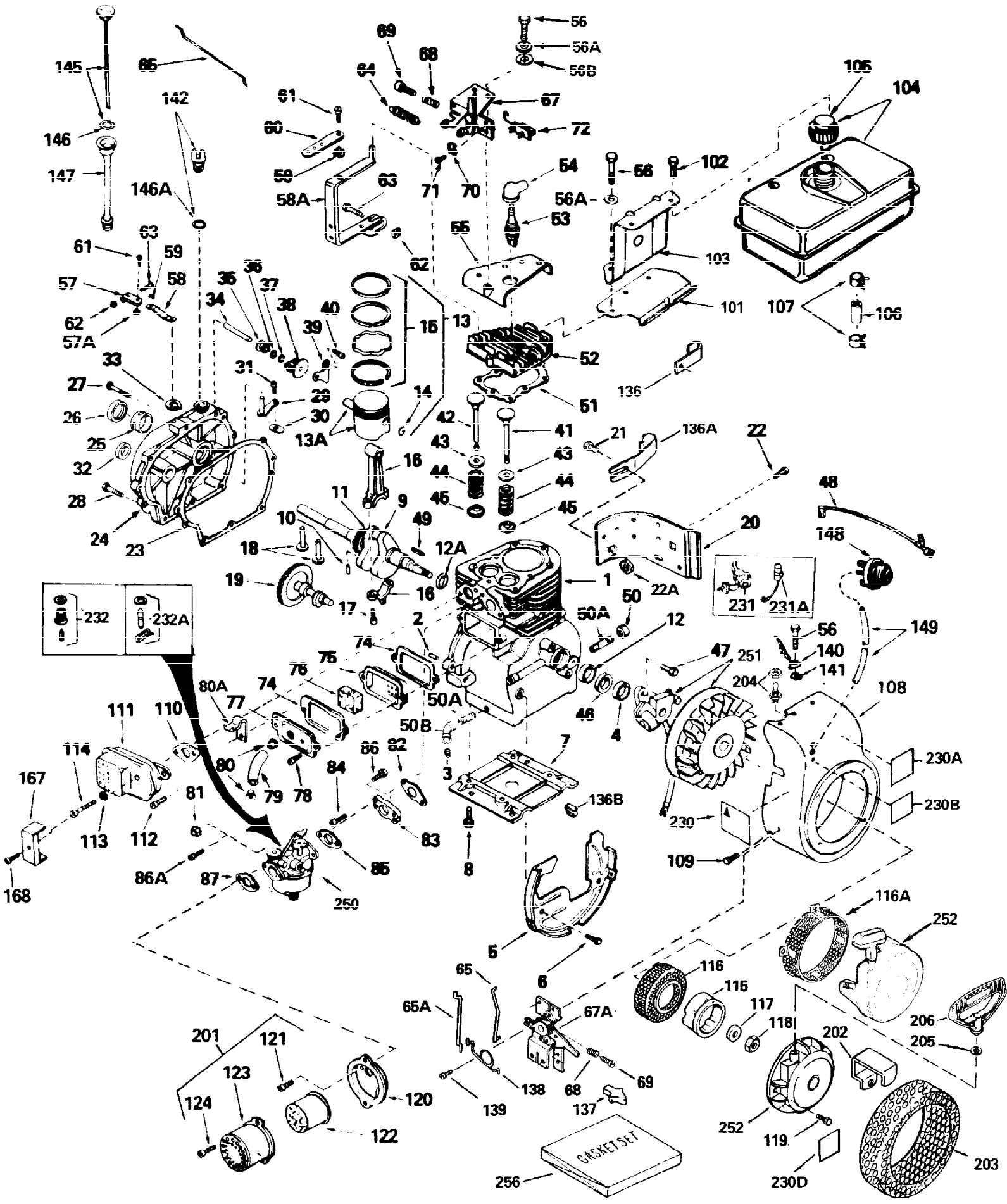


ILLUSTRATION SHOWS TYPICAL PARTS ONLY. ORDER BY PART NUMBER. PARTS NOT LISTED ARE SUPPLIED BY OEM.



| Ref # | Part Number | Qty | Description |
|-------|-------------|-----|--|
| 1 | 34919A | | Cylinder (Incl. 2,3 & 4) (2-5/8" Bore) |
| 2 | 27652 | | Pin, Dowel |
| 3 | 27642 | | Pipe plug, 1/4-18 |
| 4 | 32630 | | Seal, Oil |
| 5 | 29536 | | Blower Housing Baffle (Without electric starter knock out) (Use as required) |
| 5 | 35256A | | Blower Housing Baffle (With electric starter knockout) (As req.)(point ign.) |
| 6 | 650561 | | Screw, 1/4-20 x 5/8" |
| 7 | 29538 | | Base, Engine mounting |
| 8 | 650542 | | Screw, 5/16-18 x 3/4" |
| 9 | 35228 | | Crankshaft |
| 10 | 29783 | | Pin, Crankshaft gear (Used on early p rod.) |
| 11 | 27884 | | Gear, Crankshaft (Used on early production) This gear is serviceable ONLY when it is pinned to the crankshaft. |
| 13A | 33312B | | Piston & Pin Ass'y. (Std.)(2-5/8")(In cl.14) |
| 13A | 33313B | | Piston & Pin Ass'y. (.010" OS) (Incl. 14) |
| 13A | 33314B | | Piston & Pin Ass'y. (.020" OS) (Incl. 14) |
| 13 | 34531 | | Piston, Pin & Ring Set (Std.) (2-5/8" Bore) |
| 13 | 34532 | | Piston, Pin & Ring Set (.010" OS) |
| 13 | 34533 | | Piston, Pin & Ring Set (.020" OS) |
| 14 | 27888 | | Ring, Piston pin retaining |
| 15 | 34854 | | Ring Set (Std.) (2-5/8" Bore) |
| 15 | 34855 | | Ring Set (.010" OS) |
| 15 | 34856 | | Ring Set (.020" OS) |
| 16 | 31295C | | Rod Assy., Connecting (Incl. 17) |
| 17 | 650662C | | Bolt, Connecting rod (Incl. 2 pieces) |
| 18 | 34034 | | Lifter, Valve |
| 19 | 33156 | | Camshaft |
| 20 | 30622A | | Extension, Blower housing |
| 21 | 650128 | | Screw, 10-24 x 1/2" |
| 22 | 650561 | | Screw, 1/4-20 x 5/8" (Use as required) |
| 22 | 30063 | | Screw, 1/4-20 x 1/2" (Use as required) |
| 23 | 30684 | | Gasket Cylinder Cover |
| 24 | 31303B | | Cover, Cylinder (Incl. 26 & 34) |
| 25 | 31546 | | Bushing, Crankshaft |
| 26 | 28427 | | Seal, Oil |
| 27 | 650488 | | Screw, 1/4-20 x 1-1/4" |
| 28 | 650493 | | Screw, 1/4-20 x 1-3/4" |
| 29 | 30699C | | Rod Assy., Governor (Incl. 30 & 31) |
| 30 | 30700 | | Yoke, Governor |
| 31 | 650494 | | Screw, 6-40 x 5/16" |
| 33 | 29642 | | Ring, Retaining |
| 34 | 31845 | | Shaft, Mechanical governor |
| 35 | 30588A | | Spool, Governor |
| 36 | 35479 | | Washer, Flat |
| 37 | 29193 | | Ring, Retaining |
| 38 | 30591 | | Gear Assy., Governor |
| 39 | 31843A | | Bracket, Governor gear |
| 40 | 650836 | | Screw, 10-24 x 1/2" |
| 41 | 32783 | | Intake Valve (Std.) |
| 41 | 32784 | | Intake Valve (1/32" OS) |
| 42 | 27878A | | Exhaust Valve (Std.) |

| Ref # | Part Number | Qty | Description |
|-------|-------------|-----|---|
| 42 | 27880A | | Exhaust Valve (1/32" OS) |
| 43 | 27882 | | Cap, Upper valve spring |
| 44 | 27881 | | Spring, valve |
| 45 | 32581 | | Cap, Lower valve spring |
| 47 | 650814 | | Screw, 10-24 x 1" |
| 49 | 32589 | | Key, Flywheel |
| 51 | 28938C | | Gasket, Cylinder head |
| 52 | 30938A | | Head, Cylinder |
| 53 | 34251 | | Resistor Spark Plug (RJ-17LM) |
| 54 | 610118 | | Cover, Spark plug (Use as required) |
| 55 | 30939A | | Cover Assy., Cylinder head |
| 56A | 650691 | | Washer, Flat (Use as required) |
| 56B | 650690 | | Washer, Belleville (Use as required) |
| 56 | 650697A | | Screw, 5/16-18 x 2-1/2" (Use as required) |
| 56 | 650694A | | Screw, 5/16-18 x 2" (Use as required) |
| 56 | 650695A | | Screw, 5/16-18 x 2-1/4" (Use as required) |
| 57A | 30322 | | Locknut, 8-32 |
| 57 | 29916 | | Clamp, Governor lever (Use as required) |
| 58A | 32326A | | Lever, Governor |
| 59 | 29918 | | Washer, Lock, No. 8 E.T. |
| 60 | 30205 | | Bracket, Governor adjusting |
| 61 | 650548 | | Screw, 8-32 x 5/16" |
| 62 | 29216 | | Locknut, 10-32 |
| 63 | 29826 | | Screw, 10-32 x 3/4" |
| 65 | 32327 | | Link, Throttle |
| 72 | 610973 | | Terminal Assy. (Use as required) |
| 74 | 27896A | | Gasket, Valve chamber cover |
| 75 | 28423 | | Breather Assy., Valve |
| 76 | 28424 | | Element, Breather |
| 77 | 28425 | | Cover, Valve spring box |
| 78 | 650128 | | Screw, 10-24 x 1/2" |
| 79 | 35350 | | Tube Breather |
| 82 | 27915A | | * Gasket, Intake pipe to cylinder |
| 83 | 34712 | | Flange, Carburetor (Incl. 86A) |
| 84 | 30196 | | Screw, 5/16-18 x 3/4" |
| 85 | 31688A | | * Gasket, Carburetor |
| 86A | 650517 | | Screw, 1/4-20 x 13/16" |
| 87 | 27272A | | * Air Cleaner Gasket (Use as required) |
| 87 | 30767 | | Spacer, Cleaner (Use as required) |
| 94A | 34819 | | Elbow Assy., Air cleaner (Incl. 90,91,92,93,94,96) (Use in 730561 assembly only) |
| 101 | 34158 | | Bracket, Fuel tank |
| 102 | 650665 | | Screw, 1/4-14 x 7/8" |
| 103 | 34159 | | Plate, Fuel tank mounting |
| 104 | 34186A | | Fuel Tank (Incl. 105 & 107) NOTE: These tanks were built with different size fuel inlet openings. Tanks with the 1-3/16" I.D. opening use fuel cap 33032 or 34210. Tanks with the 1-1/2" I.D. opening use fuel cap 35355. |
| 105 | 410144B | | Fuel Cap (White Plastic)(Std.)(As required) |
| 105 | 33032 | | Fuel Cap (Red Plastic) (Spurt resistant, Low profile) (Use as required) |

| Ref # | Part Number | Qty | Description |
|-------|-------------|-----|--|
| 105 | 34210 | | Fuel Cap (Red Plastic) (Spurt resistant, High profile) (Use as required) |
| 105 | 35355 | | Fuel Cap (Red plastic) (Use as required) |
| 106 | 29774 | | Fuel Line (Braided, 8 1/4") (Use as required) |
| 106 | 30962 | | Fuel Line (Braided, 32") (Use as required) |
| 107 | 26460 | | Clamp, Fuel line (Use as required) |
| 108 | 32158E | | Blower Housing (For electric starter) |
| 109 | 29747B | | Screw, 5/16-24 x 21/32" |
| 110 | 27930A | | * Gasket, Exhaust flange |
| 111C | 391026 | | Opt. Spark Arrest Muf.(Incl.143,143A,1 43B) |
| 111D | 33714 | | Opt. Spark Arrest Muf.(Incl.112,143,14 4,144A) |
| 111 | 32401 | | Muffler |
| 111E | 34390 | | Deflector, Exhaust (Optional) |
| 112 | 30196 | | Screw, 5/16-18 x 3/4" |
| 113 | 26073 | | Washer, Flat |
| 114 | 650694A | | Screw, 5/16 - 18 x 2" |
| 115 | 32125 | | Cup, Starter |
| 116 | 35009 | | Screen, Starter cup |
| 117 | 650815 | | Washer, Belleville |
| 118 | 8116 | | Nut, Hex |
| 119 | 29716 | | Screw, 1/4-28 x 7/16" |
| 120 | 31691 | | Bracket, Air cleaner |
| 121 | 28820 | | Screw, 10-32 x 1/2" |
| 122 | 30727 | | Element, Air cleaner |
| 123 | 31715 | | Body, Air cleaner |
| 124 | 650152 | | Screw, 8-32 x 3/8" |
| 131 | 30845A | | Bolt, Governor spring adjusting |
| 132 | 33450 | | Nut, 10-32 Lock |
| 133 | 30886A | | Spring, Extension |
| 140 | 30747 | | Clip, Spark plug shorting |
| 141 | 650890 | | Lockwasher, Shakeproof, 5/16 |
| 143 | 650578 | | Screw, 8-18 x 3/8" (Use as required) |
| 143A | 33171 | | Screen, Muffler (Use as required) |
| 143B | 33185 | | Cover & tube, Muffler (Use as required) |
| 144 | 33700 | | Cover & Tube, Muffler (Use as required) |
| 144A | 33323 | | Screen, Muffler (Use as required) |
| 145 | 31297 | | Dipstick (Incl. 146A) |
| 146A | 29673 | | * Gasket, Oil fill |
| 178 | 650597 | | Screw, 10-24 x 5/8" |
| 179 | | | Lock Washer, #10 Heavy Split (Buy locally) |
| 180 | 32328 | | Bracket, Speed adjusting |
| 201 | 730164 | | Air Cleaner Ass'y. (Red Poly)(Incl.87,120,121,122,123,124 & 230)(As req.) |
| 201 | 730164 | | Air Cleaner Kit, Mini bike (Incl.87,120,121,122,123 & 124) (Use as required) |
| 201A | 730130 | | Muffler Adapter Kit (Incl.110,112)(As req.) |
| 201B | 730561 | | Air Cleaner Kit (Incl.74,79,80,87,88,89,90,91,92,94,95,96,97,99,100 & 230C) (Used only on engine with an externally vented fully adjustable carburetor) |
| 209 | 611084 | | Flywheel |
| 210 | 650872 | | Stud, Solid State mounting |
| 211 | 34443A | | Solid State Assy. (Incl. 54) |

| Ref # | Part Number | Qty | Description |
|-------|-------------|-----|---|
| 230 | 34346 | | Decal, Instruction |
| 230 | 550223 | | Decal, Name |
| 231 | 30547A | | Breaker Assy (Used on Std. Point ignition) |
| 232A | 631021 | | Inlet, Needle Seat & Clip Assy. |
| 240 | 611077 | | Alternator (Optional) |
| 241 | 650868 | | Screw, 8-18 x 1-1/8" (3 required)(Opt .) |
| 242 | 611078 | | Connector, A.C. Lighting (Optional) |
| 242 | 611079 | | Connector, D.C. Charging (Optional) |
| 243 | 590610 | | Tube, Centering (Optional) |
| 244 | 590613 | | Alternator Shaft (Optional) |
| 250 | 632230 | | Carburetor (Incl. 85) (Refer to Division 5, Section A, Page 182 for breakdown) |
| 252 | 590420A | | Rewind Starter (Refer to Division 5, Section C, page 25 for breakdown) |
| 254 | 33328D | | Starter Motor Kit (110-120 volt) This 110-120 volt starter motor kit may have been added to this engine. It can be added only if cylinder has drilled and tapped starter mounting bosses and a ring gear flywheel (see#255). Refer to service number stamped on end cap of motor or on decal for identification |
| 255 | 30811A | | Flywheel (Ring gear flywheel required on engines using 110-120 volt starter motor kits listed above) (Used on Std. point ignition before 1982) |
| 255 | 611042 | | Flywheel (Ring gear flywheel required on engines using 110-120 volt starter motor kits listed above) (Used on Std. point ignition 1982 or later) |
| 255 | 611085 | | Flywheel (Minimum ring gear flywheel required on engines using 110-120 volt starter motor kits listed above) (Used on solid state external ignition) |
| 256 | 33235A | | Gasket Set (Incl. items marked*) |