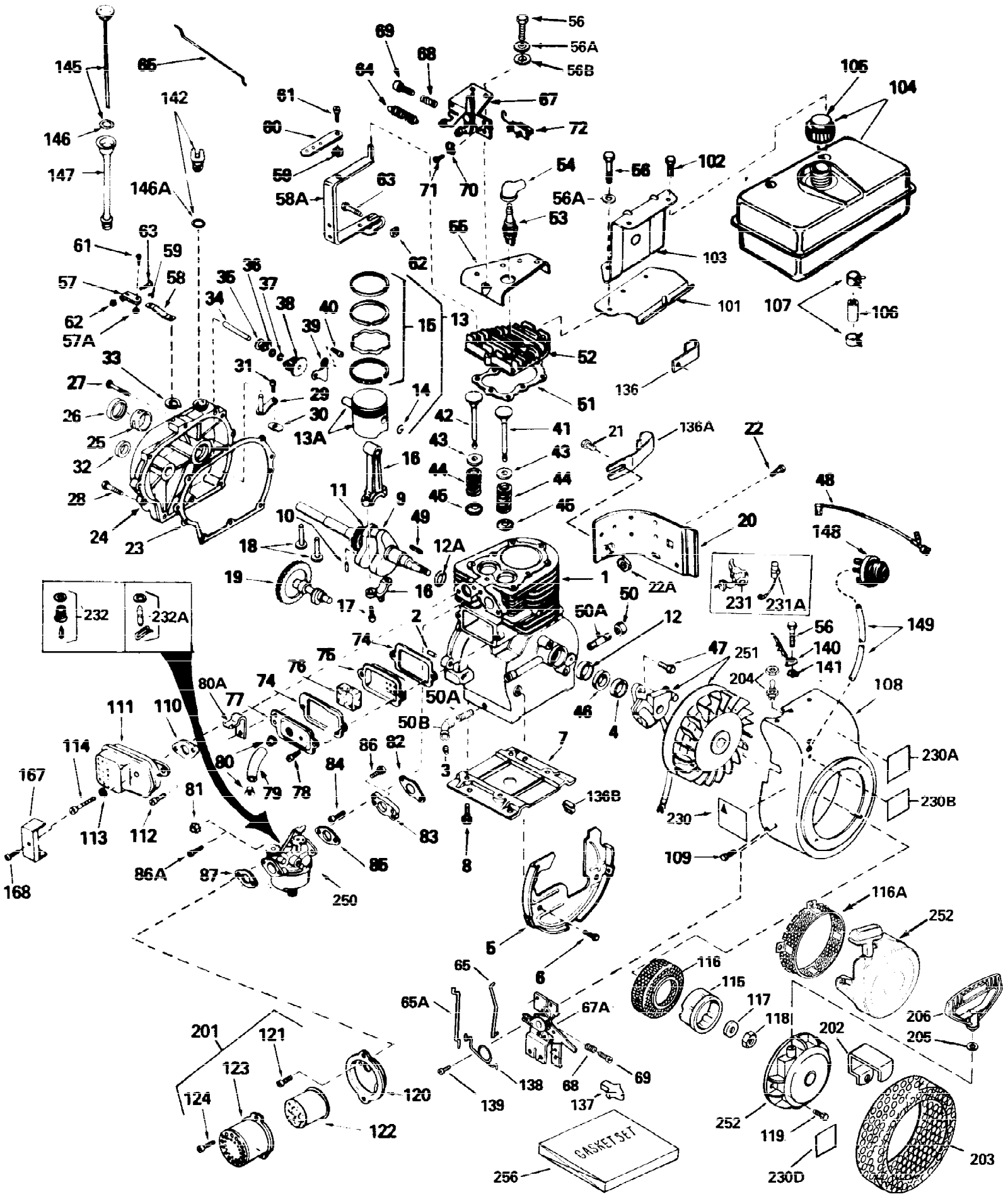


ILLUSTRATION SHOWS TYPICAL PARTS ONLY. ORDER BY PART NUMBER. PARTS NOT LISTED ARE SUPPLIED BY OEM.



Ref #	Part Number	Qty	Description
1	33311B		Cylinder (Incl. 2, 3, 4 & 41)(2-5/8" Bore)
2	27652		Pin, Dowel
3	27642		Pipe plug, 1/4-18
4	27876B		Seal, Oil
5	29536		Blower Housing Baffle (Without electric starter knock out) (Use as required)
5	35256A		Blower Housing Baffle (With electric starter knockout) (As req.)(point ign.)
6	650561		Screw, 1/4-20 x 5/8"
7	29538		Base, Engine mounting
8	650542		Screw, 5/16-18 x 3/4"
9	30799		Crankshaft
10	29783		Pin, Crankshaft gear (Used on early p rod.)
11	27884		Gear, Crankshaft (Used on early production) This gear is serviceable ONLY when it is pinned to the crankshaft.
13A	33312B		Piston & Pin Ass'y. (Std.)(2-5/8")(In cl.14)
13A	33313B		Piston & Pin Ass'y. (.010" OS) (Incl. 14)
13A	33314B		Piston & Pin Ass'y. (.020" OS) (Incl. 14)
13	34531		Piston, Pin & Ring Set (Std.) (2-5/8" Bore)
13	34532		Piston, Pin & Ring Set (.010" OS)
13	34533		Piston, Pin & Ring Set (.020" OS)
14	27888		Ring, Piston pin retaining
15	34854		Ring Set (Std.) (2-5/8" Bore)
15	34855		Ring Set (.010" OS)
15	34856		Ring Set (.020" OS)
16	31380C		Rod Assy., Connecting (Incl. 17)
17	650662C		Bolt, Connecting rod (Incl. 2 pieces)
18	34034		Lifter, Valve
19	33156		Camshaft
20	30622A		Extension, Blower housing
21	650128		Screw, 10-24 x 1/2"
22	650561		Screw, 1/4-20 x 5/8" (Use as required)
22	30063		Screw, 1/4-20 x 1/2" (Use as required)
23	30684		Gasket Cylinder Cover
24	31303B		Cover, Cylinder (Incl. 26 & 34)
25	31546		Bushing, Crankshaft
26	28427		Seal, Oil
27	650488		Screw, 1/4-20 x 1-1/4"
28	650493		Screw, 1/4-20 x 1-3/4"
29	30699C		Rod Assy., Governor (Incl. 30 & 31)
30	30700		Yoke, Governor
31	650494		Screw, 6-40 x 5/16"
33	29642		Ring, Retaining
34	31845		Shaft, Mechanical governor
35	30588A		Spool, Governor
36	35479		Washer, Flat
37	29193		Ring, Retaining
38	30591		Gear Assy., Governor
39	31843A		Bracket, Governor gear
40	650836		Screw, 10-24 x 1/2"
41	32783		Intake Valve (Std.)
41	32784		Intake Valve (1/32" OS)
42	27878A		Exhaust Valve (Std.)

Ref #	Part Number	Qty	Description
42	27880A		Exhaust Valve (1/32" OS)
43	27882		Cap, Upper valve spring
44	27881		Spring, valve
45	32581		Cap, Lower valve spring
46	33876		Gasket, Stator
47	650489		Screw, 1/4-20 x 5/8"
48	34240		Ground Wire
49	30884		Key, Flywheel
50	30969		Cap, Oil drain
50A	34171		Nipple, Oil drain, 1/4" x 5-1/2"
51	28938C		Gasket, Cylinder head
52	30938A		Head, Cylinder
53	34251		Resistor Spark Plug (RJ-17LM)
54	610118		Cover, Spark plug (Use as required)
55	30939A		Cover Assy., Cylinder head
56	650697A		Screw, 5/16-18 x 2-1/2" (Use as required)
56	650694A		Screw, 5/16-18 x 2" (Use as required)
56	650695A		Screw, 5/16-18 x 2-1/4" (Use as required)
56B	650690		Washer, Belleville (Use as required)
56A	650691		Washer, Flat (Use as required)
57A	30322		Locknut, 8-32
57	29916		Clamp, Governor lever (Use as required)
58A	32326A		Lever, Governor
59	29918		Washer, Lock, No. 8 E.T.
60	30205		Bracket, Governor adjusting
61	650548		Screw, 8-32 x 5/16"
62	29216		Locknut, 10-32
63	29826		Screw, 10-32 x 3/4"
64	31386		Spring, Extension
65	30824		Link, Throttle
67	33108A		Control Assy., Remote Speed (Incl. 64 & 72)
70	27793		Clip, Conduit
71	28942		Screw, 10-32 x 3/8"
72	610973		Terminal Assy. (Use as required)
74	27896A		Gasket, Valve chamber cover
75	28423		Breather Assy., Valve
76	28424		Element, Breather
77	28425		Cover, Valve spring box
78	650128		Screw, 10-24 x 1/2"
79	35350		Tube Breather
81	29752		Nut & Lockwasher, 1/4-28
82	27915A		* Gasket, Intake pipe to cylinder
83	30195A		Flange, Carburetor (Incl. 81 & 86)
84	30196		Screw, 5/16-18 x 3/4"
85	31688A		* Gasket, Carburetor
86	650572		Screw, 1/4-28 x 1-1/8"
87	27272A		* Air Cleaner Gasket (Use as required)
87	30767		Spacer, Cleaner (Use as required)
94A	34819		Elbow Assy., Air cleaner (Incl. 90,91,92,93,94,96) (Use in 730561 assembly only)
101	34158		Bracket, Fuel tank
102	650665		Screw, 1/4-14 x 7/8"
103	34159		Plate, Fuel tank mounting

Ref #	Part Number	Qty	Description
104	34186A		Fuel Tank (Incl. 105 & 107) NOTE: These tanks were built with different size fuel inlet openings. Tanks with the 1-3/16" I.D. opening use fuel cap 33032 or 34210. Tanks with the 1-1/2" I.D. opening use fuel cap 35355.
105	410144B		Fuel Cap (White Plastic)(Std.)(As required)
105	33032		Fuel Cap (Red Plastic) (Spurt resistant, Low profile) (Use as required)
105	34210		Fuel Cap (Red Plastic) (Spurt resistant, High profile) (Use as required)
105	35355		Fuel Cap (Red plastic) (Use as required)
106	29774		Fuel Line (Braided, 8 1/4") (Use as required)
106	30962		Fuel Line (Braided, 32") (Use as required)
107	26460		Clamp, Fuel line (Use as required)
108	32158E		Blower Housing (For electric starter)
109	29747B		Screw, 5/16-24 x 21/32"
110	27930A		* Gasket, Exhaust flange
111	32401		Muffler
111C	391026		Opt.Spark Arrest Muf.(Incl.143,143A,1 43B)
111D	33714		Opt.Spark Arrest Muf.(Incl.112,143,14 4,144A)
111E	34390		Deflector, Exhaust (Optional)
112	30196		Screw, 5/16-18 x 3/4"
113	26073		Washer, Flat
114	650694A		Screw, 5/16 - 18 x 2"
115	32125		Cup, Starter
116	590417		Screen, Starter cup
117	650815		Washer, Belleville
118	8116		Nut, Hex
119	29716		Screw, 1/4-28 x 7/16"
137	32410		Knob, Speed control
143	650578		Screw, 8-18 x 3/8" (Use as required)
143A	33171		Screen, Muffler (Use as required)
143B	33185		Cover & tube, Muffler (Use as required)
144A	33323		Screen, Muffler (Use as required)
144	33700		Cover & Tube, Muffler (Use as required)
145	31297		Dipstick (Incl. 146A)
146A	29673		* Gasket, Oil fill
148A	570629A		Primer Assy.
149	32180C		Line, Primer
150	34132		Plate, Choke indicator
151	34217		Cover, Carburetor
152	31291		Plug, Cover
153	650764		Nut, "U" Clip
154	650760		Screw, 8-32 x 3/8"
155	34126		Bracket, Grommet mounting
156	650257		Screw, 8-32 x 5/16"
157	650765		Screw, 10-32 x 1/2"
158	28820		Screw, 10-32 x 1/2"
159	32398		Bracket, Choke
160	650760		Screw, 8-32 x 3/8"
161	28545		Grommet, Plastic
162	34127		Guard, Starter
163	32576		Seal, Snow Guard
182	32961		Valve, Fuel shut off

Ref #	Part Number	Qty	Description
201A	730130		Muffler Adapter Kit (Incl.110,112)(As req.)
201	730164		Air Cleaner Ass'y. (Red Poly)(Incl.87,120,121,122,123,124 & 230)(As req.)
201	730164		Air Cleaner Kit, Mini bike (Incl.87,120,121,122,123 & 124) (Use as required)
201B	730561		Air Cleaner Kit (Incl.74,79,80,87,88,89,90,91,92,94,95,96,97,99,100 & 230C) (Used only on engine with an externally vented fully adjustable carburetor)
230B	34144		Decal, Primer
230	34346		Decal, Instruction
230	34416		Decal, Instruction
230F	34414		Decal, Warning
231	30547A		Breaker Assy (Used on Std. Point igni tion)
231A	30548B		Condenser
232A	631021		Inlet, Needle Seat & Clip Assy.
240	611077		Alternator (Optional)
241	650868		Screw, 8-18 x 1-1/8" (3 required)(Opt .)
242	611078		Connector, A.C. Lighting (Optional)
242	611079		Connector, D.C. Charging (Optional)
243	590610		Tube, Centering (Optional)
244	590613		Alternator Shaft (Optional)
250	631927		Carburetor (Incl. 85) (Refer to Division 5, Section A, Page 140 for breakdown)
251	610964A		Magneto (w/ring gear for 120 volt sta rter) NOTE: The complete magneto is not available as an assembly. The magneto number is shown for reference purposes only. Order component parts individually, as shown in parts list. (Refer to Division 5, Section B, page 24 for breakdown)
252	590473		Rewind Starter (Refer to Division 5, Section C, page 29 for breakdown)
254	33328D		Starter Motor Kit (110-120 volt) This 110-120 volt starter motor kit may have been added to this engine. It can be added only if cylinder hasdrilled and tapped starter mounting bosses and a ring gear flywheel (see#255). Refer to service number stamped on end cap of motor or on decal for identificat
255	30811A		Flywheel (Ring gear flywheel requiredon engines using 110-120 volt starter motor kits listed above) (Used on Std. point ignition before 1982)
255	611042		Flywheel (Ring gear flywheel requiredon engines using 110-120 volt starter motor kits listed above) (Used on Std. point ignition 1982 or later)
255	611085		Flywheel (Minimum ring gear flywheel required on engines using 110-120 volt starter motor kits listed above) (Used on solid state external ignition)
256	33235A		Gasket Set (Incl. items marked*)