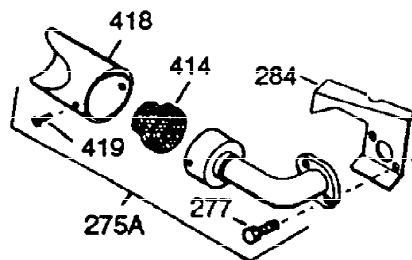
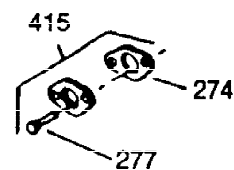
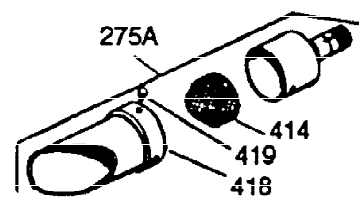
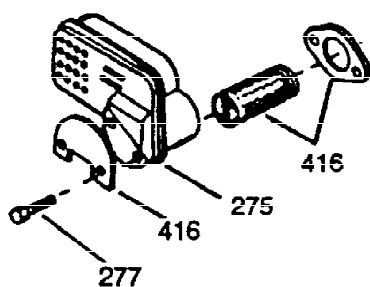
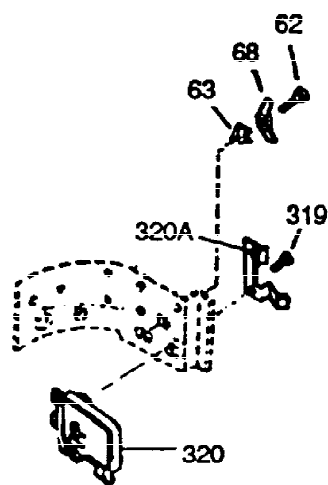
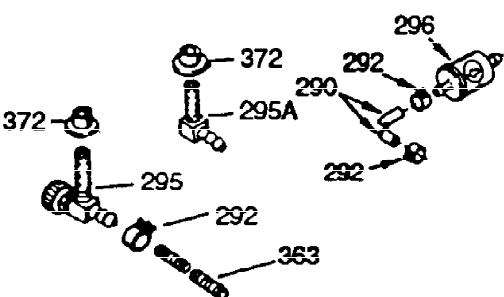
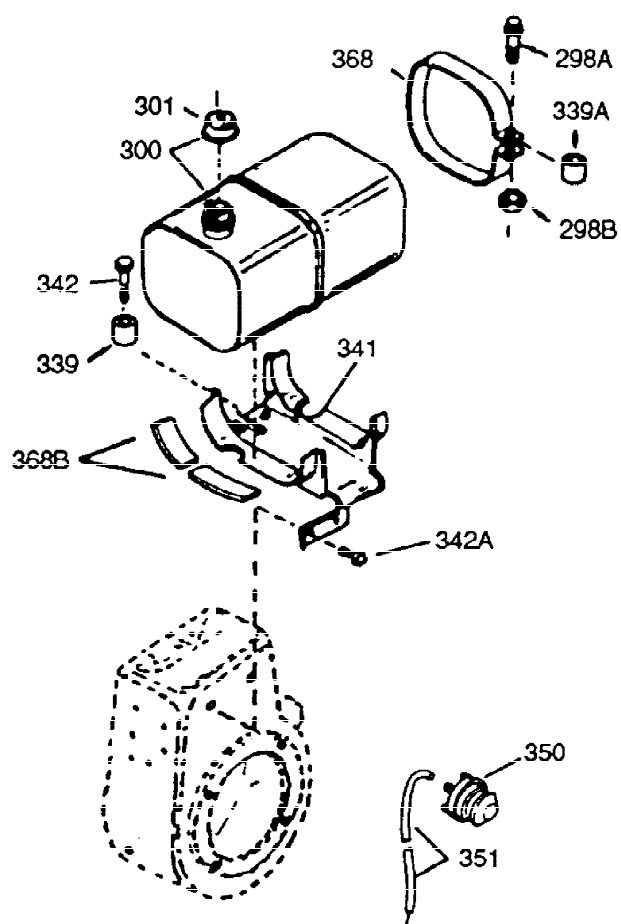
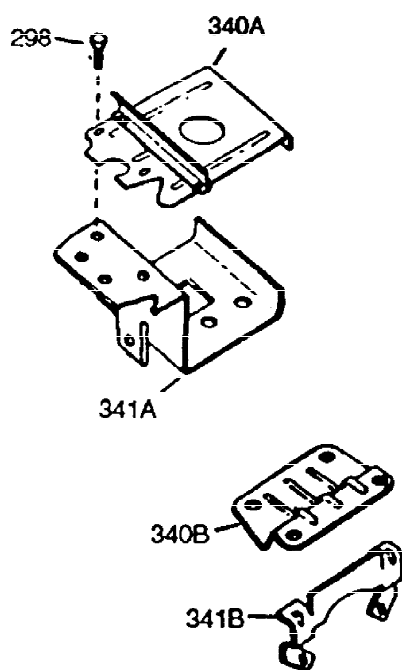


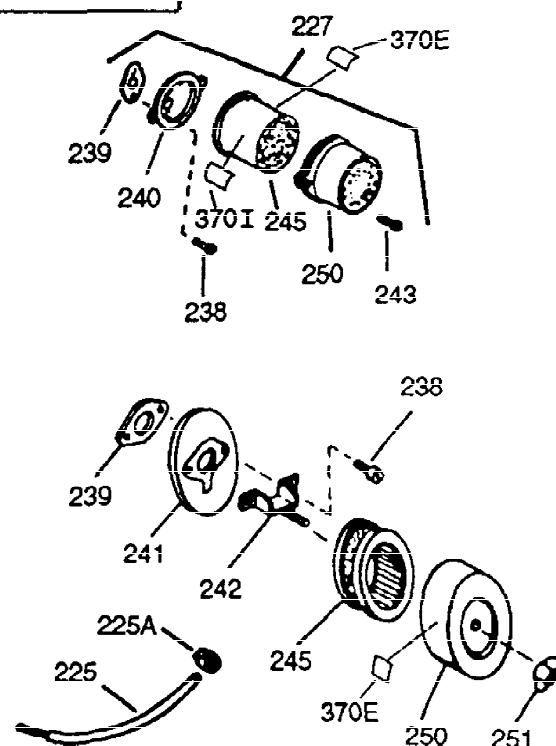
| Ref # | Part Number | Qty | Description   |
|-------|-------------|-----|---|
| 1     | 34922A      |     | Cylinder (CI liner)(3-5/16")(Incl. 2, 20 & 72)                              |
| 2     | 27652       |     | Pin, Dowel  |
| 15    | 30699C      |     | Rod Assy., Governor (Incl. 15A & 15B)                                       |
| 15B   | 650494      |     | Screw, 6-40 x 5/16"   |
| 15A   | 30700       |     | Yoke, Governor  |
| 16    | 33454       |     | Governor Lever Assy.  |
| 17    | 29916       |     | Clamp, Governor lever   |
| 18    | 650548      |     | Screw, 8-32 x 5/16"   |
| 20    | 32630       |     | Seal, Oil   |
| 25    | 35256A      |     | Blower Housing Baffle (With electric starter knockout) (Use as required)    |
| 25    | 29536       |     | Blower Housing Baffle (Without electric starter knockout) (Use as required) |
| 26    | 650561      |     | Screw, 1/4-20 x 5/8"  |
| 30    | 35207       |     | Crankshaft (Incl. 108 & 109)  |
| 35    | 29826       |     | Screw, 10-32 x 3/4"   |
| 36    | 29918       |     | Lockwasher, #8 E.T.   |
| 37    | 29216       |     | Locknut, 10-32  |
| 37A   | 30322       |     | Nut & Lockwasher, 8-32  |
| 38    | 29642       |     | Ring, Retaining   |
| 40    | 34860A      |     | Piston, Pin & Ring Set (Std.)(3-5/16" )                                     |
| 40    | 34861A      |     | Piston, Pin & Ring Set (.010" OS)   |
| 40    | 34862A      |     | Piston, Pin & Ring Set (.020" OS)   |
| 41    | 34863       |     | Piston & Pin Ass'y. (Std.)(3-5/16")(Incl. 43)                               |
| 41    | 34864       |     | Piston & Pin Ass'y. (.010" OS) (Incl. 43)                                   |
| 41    | 34865       |     | Piston & Pin Ass'y. (.020" OS) (Incl. 43)                                   |
| 42    | 34866A      |     | Ring Set (Std.) (3-5/16" Bore)  |
| 42    | 34867A      |     | Ring Set (.010" OS)   |
| 42    | 34868A      |     | Ring Set (.020" OS)   |
| 43    | 27888       |     | Ring, Piston Pin retaining  |
| 45    | 32591C      |     | Rod Assy., Connecting (Incl. 46, 47 & 49)                                   |
| 46    | 650662C     |     | Bolt, Connecting rod (2 pieces)   |
| 47    | 650662C     |     | Bolt, Connecting rod (2 pieces)   |
| 48    | 34034       |     | Lifter, Valve   |
| 49    | 34242       |     | Dipper, Oil   |
| 50    | 34143       |     | Camshaft (MCR)  |
| 60    | 33273A      |     | Extension, Blower housing   |
| 62    | 650760      |     | Screw, 8-32 x 3/8"  |
| 63    | 28545       |     | Grommet, Plastic  |
| 65    | 650128      |     | Screw, 10-24 x 1/2"   |
| 69    | 35262       |     | * Gasket, Flange  |
| 70    | 33367B      |     | Cover, Cylinder (Incl. 71, 75 & 80)   |
| 71    | 33368       |     | Bushing, Crankshaft   |
| 72    | 27642       |     | Plug, Oil drain   |
| 75    | 31950       |     | Seal, Oil   |
| 80    | 31845       |     | Shaft, Mechanical governor  |
| 81    | 30590A      |     | Washer, Flat  |
| 82    | 30591       |     | Gear Assy., Governor (Incl. 81)   |
| 83    | 30588A      |     | Spool, Governor   |
| 84    | 29193       |     | Ring, Retaining   |
| 86    | 650833      |     | Screw, 1/4-20 x 1-3/16 (Use as required)                                    |
| 87    | 650832      |     | Screw, 1/4-20 x 1-11/16" (Use as required)                                  |
| 89    | 32589       |     | Key, Flywheel   |
| 90    | 611091      |     | Flywheel (w/ring gear)  |

| Ref # | Part Number | Qty | Description  |
|-------|-------------|-----|--|
| 92    | 650815      |     | Washer, Belleville   |
| 93    | 8116        |     | Nut, Hex   |
| 100   | 35135       |     | Solid State Assy.  |
| 101   | 27276       |     | Cover, Spark plug  |
| 102   | 650872      |     | Stud, Solid state mounting   |
| 103   | 650814      |     | Screw, Torx T-15, 10-24 x 1"   |
| 108   | 29783       |     | Pin, Crankshaft gear (Only serviceable when gear is pinned to crank.)                |
| 109   | 33245       |     | Gear, Crankshaft   |
| 110   | 35183       |     | Wire, Ground   |
| 119   | 34923A      |     | * Gasket, Cylinder head  |
| 120   | 34030A      |     | Head, Cylinder   |
| 125   | 27878A      |     | Exhaust Valve (Std.) (Incl. 151)   |
| 125   | 27880A      |     | Exhaust Valve (1/32" OS) (Incl. 151)   |
| 126   | 34035       |     | Intake Valve (Std.) (Incl. 151)  |
| 126   | 34036       |     | Intake Valve (1/32" OS) (Incl. 151)  |
| 127   | 650691      |     | Washer (Do not use with No. 6021A scr ew.)   |
| 128   | 650690      |     | Washer, Belleville (Use as required)   |
| 129   | 650727      |     | Screw, 5/16-18 x 1-3/4 (Use as required)   |
| 130   | 6021A       |     | Screw, 5/16-18 x 1-1/2" (Use as required, but do not use No. 650691 washer.)         |
| 130   | 650711      |     | Screw, 5/16-18 x 1-5/8" (Use as required) (Can use 6021A but discard 650691 washer.) |
| 130   | 650694A     |     | Screw, 5/16-18 x 2" (Use as required)  |
| 131A  | 650713      |     | Screw, 5/16-18 x 5/8"  |
| 131   | 650737      |     | Screw, 1/4-20 x 1/2" (Use as required)   |
| 131   | 650738      |     | Screw, 1/4-20 x 5/8 (Use as required)  |
| 133   | 650890      |     | Washer, Internal Lock  |
| 134   | 30747       |     | Clip, Spark plug shorting  |
| 135   | 33636       |     | Resistor Spark Plug  |
| 139   | 33369       |     | Bracket, Governor gear   |
| 140   | 650836      |     | Screw, 10-24 x 1/2"  |
| 149A  | 35862       |     | Seal Assy., Intake valve   |
| 150   | 27881       |     | Spring, Valve  |
| 151   | 32581       |     | Cap, Lower valve spring  |
| 169   | 27896A      |     | * Gasket, Breather   |
| 170   | 28423       |     | Body, Breather   |
| 171   | 28424       |     | Element, Breather  |
| 172   | 28425       |     | Cover, Breather  |
| 173   | 35350       |     | Tube, Breather   |
| 174   | 650128      |     | Screw, 10-24 x 1/2"  |
| 178   | 29752       |     | Nut & Lockwasher, 1/4-28   |
| 182   | 30088A      |     | Screw, 1/4-28 x 1"   |
| 184   | 33263       |     | * Gasket, Carburetor   |
| 185   | 34707       |     | Pipe, Intake   |
| 207   | 33878       |     | Link, Governor lever-to-throttle   |
| 222A  |             |     | Pop Rivet (Can be purchased locally)   |
| 223   | 650378      |     | Screw, Torx T-30, 5/16-18 x 1-1/8"   |
| 224   | 27915A      |     | * Gasket, Intake pipe  |
| 250B  | 33269A      |     | Cover, Air cleaner   |
| 260   | 33375D      |     | Blower Housing (For electric starter)  |
| 261   | 650788      |     | Screw, 5/16-18 x 3/4"  |
| 262   | 29747B      |     | Screw, 5/16-24 x 21/32"  |
| 265   | 33272B      |     | Cover, Cylinder head   |

| Ref # | Part Number | Qty | Description  |
|-------|-------------|-----|--|
| 276   | 35741       |     | Plate, Muffler locking   |
| 277   | 650729      |     | Screw, 5/16-18 x 3-3/16" (Use as required)   |
| 277   | 651002      |     | Screw, 5/16-18 x 4-1/4" (Use as required)  |
| 281   | 33013       |     | Cover, Starter bubble  |
| 282   | 650760      |     | Screw, 8-32 x 7/16"  |
| 285   | 32125       |     | Cup, Starter   |
| 286   | 35194       |     | Screen, Starter  |
| 287   | 29752       |     | Nut, 1/4-28  |
| 290   | 29774       |     | Fuel Line (Braided 8-1/4")(21cm)(As required)  |
| 290   | 30962       |     | Fuel Line (Braided 32")(80cm)(As required)   |
| 291   | 30705       |     | Fuel Line (Braided 16")(40cm)(As required)   |
| 292   | 26460       |     | Fuel Line Clamp (Use as required)  |
| 298   | 650665      |     | Screw, 1/4-15 x 7/8"   |
| 300   | 34156A      |     | Fuel Tank (Incl. 292 & 301) NOTE: These tanks were built with different size fuel inlet openings. Tanks with the 1-3/16" I.D. opening use fuel cap 34210. Tanks with the 1-1/2" I.D. opening use fuel cap 35355. |
| 301A  | 410144B     |     | Fuel Cap (White Plastic)(Standard) (Use as required) (1.5" I.D.)   |
| 301A  | 33032       |     | Fuel Cap (Red Plastic) (Spurt Resistant, Low Profile) (Use as required) (1.5" I.D.)  |
| 301A  | 34210       |     | Fuel Cap (Red Plastic) (Spurt Resistant, High Profile) (Use as required) (1.5" I.D.)   |
| 301A  | 35355       |     | Fuel Cap (Red Plastic)(1.75" I.D.)   |
| 306   | 29673       |     | * Gasket, Oil filler   |
| 310   | 31297       |     | Dipstick (Incl. 307)   |
| 311   | 27625       |     | Oil Fill Plug (Incl. 312)  |
| 312   | 29673       |     | * Gasket, Oil filler plug  |
| 325   | 34246       |     | Clip, Ground wire  |
| 338A  | 31291       |     | Plug, Cover  |
| 340   | 34154       |     | Plate, Upper fuel tank mtg.  |
| 341   | 34155       |     | Bracket, Lower fuel tank mtg.  |
| 342   | 650561      |     | Screw, 1/4-20 x 5/8"   |
| 370   | 34346       |     | Decal, Instruction   |
| 370   | 35274       |     | Decal, Instruction   |
| 379   | 631021      |     | Inlet Needle, Seat & Clip Assy.  |
| 380   | 632255      |     | Carburetor (Incl. 184 & 379) (Refer to Division 5, Section A, page A4-4 for breakdown or Fiche 18B, Grid D-3)  |
| 400   | 33279G      |     | * Gasket Set (Incl. items marked *)  |
| 420   | 730225      |     | SAE 30 4-Cycle Engine Oil (Quart)  |
| 421   | 730226      |     | SAE 5W30 4-Cycle Engine Oil (Quart)  |
| 422   | 35824       |     | Muffler Optional   |



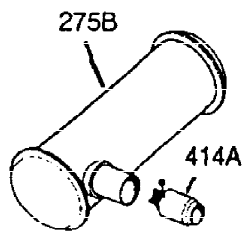
| Ref # | Part Number | Qty | Description  |
|-------|-------------|-----|--|
| 37A   | 30322       |     | Nut & Lockwasher, 8-32   |
| 62    | 650760      |     | Screw, 8-32 x 3/8"   |
| 63    | 28545       |     | Grommet, Plastic   |
| 68    | 33356       |     | Tab, Ground terminal   |
| 129   | 650727      |     | Screw, 5/16-18 x 1-3/4 (Use as required)   |
| 131A  | 650713      |     | Screw, 5/16-18 x 5/8"  |
| 131   | 650737      |     | Screw, 1/4-20 x 1/2" (Use as required)   |
| 131   | 650738      |     | Screw, 1/4-20 x 5/8 (Use as required)  |
| 222A  |             |     | Pop Rivet (Can be purchased locally)   |
| 250B  | 33269A      |     | Cover, Air cleaner   |
| 274   | 35865       |     | Gasket, Exhaust  |
| 277   | 650729      |     | Screw, 5/16-18 x 3-3/16" (Use as required)   |
| 277   | 651002      |     | Screw, 5/16-18 x 4-1/4" (Use as required)  |
| 290   | 29774       |     | Fuel Line (Braided 8-1/4")(21cm)(As required)  |
| 290   | 30962       |     | Fuel Line (Braided 32")(80cm)(As required)   |
| 292   | 26460       |     | Fuel Line Clamp (Use as required)  |
| 298   | 650665      |     | Screw, 1/4-15 x 7/8"   |
| 300   | 34156A      |     | Fuel Tank (Incl. 292 & 301) NOTE: These tanks were built with different size fuel inlet openings. Tanks with the 1-3/16" I.D. opening use fuel cap 34210. Tanks with the 1-1/2" I.D. opening use fuel cap 35355. |
| 301A  | 410144B     |     | Fuel Cap (White Plastic)(Standard) (Use as required) (1.5" I.D.)   |
| 301A  | 33032       |     | Fuel Cap (Red Plastic) (Spurt Resistant, Low Profile) (Use as required) (1.5" I.D.)  |
| 301A  | 34210       |     | Fuel Cap (Red Plastic) (Spurt Resistant, High Profile) (Use as required) (1.5" I.D.)   |
| 301A  | 35355       |     | Fuel Cap (Red Plastic)(1.75" I.D.)   |
| 306   | 29673       |     | * Gasket, Oil filler   |
| 338A  | 31291       |     | Plug, Cover  |
| 341   | 34155       |     | Bracket, Lower fuel tank mtg.  |
| 342   | 650561      |     | Screw, 1/4-20 x 5/8"   |
| 414   | 33323       |     | Opt. Muffler Screen (Mini-Bike application)  |
| 415   | 730130      |     | Kit, Exhaust adapter (Incl. 274 & 277)   |
| 418   | 33700       |     | Cover & Tube, Muffler (use as required)  |
| 419   | 650578      |     | Screw, 8-18 x 3/8" (use as required)   |
| 421   | 730226      |     | SAE 5W30 4-Cycle Engine Oil (Quart)  |
| 422   | 35824       |     | Muffler Optional   |



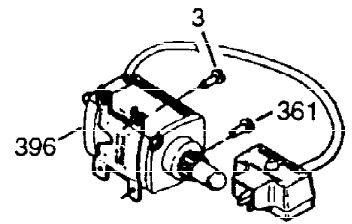
| Ref # | Part Number | Qty | Description   |
|-------|-------------|-----|---|
| 37A   | 30322       |     | Nut & Lockwasher, 8-32  |
| 129   | 650727      |     | Screw, 5/16-18 x 1-3/4 (Use as required)  |
| 131   | 650737      |     | Screw, 1/4-20 x 1/2" (Use as required)  |
| 131   | 650738      |     | Screw, 1/4-20 x 5/8 (Use as required)   |
| 131A  | 650713      |     | Screw, 5/16-18 x 5/8"   |
| 200B  | 730152      |     | Control Bracket (Incl.1158-1171)(As req.)   |
| 222A  |             |     | Pop Rivet (Can be purchased locally)  |
| 227   | 730127      |     | Air Cleaner Ass'y. (Incl. 238, 239, 242, 246, 250)<br>(Use as required)   |
| 238   | 28820       |     | Screw, 10-32 x 1/2"   |
| 239   | 27272A      |     | * Gasket, Air cleaner   |
| 241   | 33266       |     | Bracket, Air cleaner  |
| 242   | 33267       |     | Bracket, Air cleaner  |
| 245   | 33268       |     | Element, Air cleaner  |
| 250B  | 33269A      |     | Cover, Air cleaner  |
| 251   | 650513      |     | Nut, Wing 1/4-20  |
| 290   | 29774       |     | Fuel Line (Braided 8-1/4")(21cm)(As required)   |
| 290   | 30962       |     | Fuel Line (Braided 32")(80cm)(As required)  |
| 291   | 30705       |     | Fuel Line (Braided 16")(40cm)(As required)  |
| 293   | 33715       |     | Impulse Fuel Pump NOTE: 34385 and 33715<br>(WIP)pumps are replaced by 35813 and 35800<br>(WIP) pumps. The 33010 (3000 series) repair kit is<br>still available. The 35791 repair kit is used with the<br>35813 and 35800 fuel pumps.    |
| 294   | 33010       |     | Fuel Pump Repair Kit NOTE: 34385 and 33715<br>(WIP)pumps are replaced by 35813 and 35800<br>(WIP) pumps. The 33010 (3000 series) repair kit is<br>still available. The 35791 repair kit is used with the<br>35813 and 35800 fuel pumps. |
| 294   | 35791       |     | Fuel Pump Repair Kit NOTE: 34385 and 33715<br>(WIP)pumps are replaced by 35813 and 35800<br>(WIP) pumps. The 33010 (3000 series) repair kit is<br>still available. The 35791 repair kit is used with the<br>35813 and 35800 fuel pumps. |
| 301A  | 410144B     |     | Fuel Cap (White Plastic)(Standard) (Use as required)<br>(1.5" I.D.)   |
| 301A  | 33032       |     | Fuel Cap (Red Plastic) (Spurt Resistant, Low Profile)<br>(Use as required) (1.5" I.D.)  |
| 301A  | 34210       |     | Fuel Cap (Red Plastic) (Spurt Resistant, High Profile)<br>(Use as required) (1.5" I.D.)   |
| 301A  | 35355       |     | Fuel Cap (Red Plastic)(1.75" I.D.)  |
| 303   | 32958       |     | Fitting, Fuel   |
| 303   | 33713       |     | Fitting, Fuel line elbow  |
| 306   | 29673       |     | * Gasket, Oil filler  |
| 338A  | 31291       |     | Plug, Cover   |
| 370   | 34346       |     | Decal, Instruction  |
| 370   | 35274       |     | Decal, Instruction  |
| 421   | 730226      |     | SAE 5W30 4-Cycle Engine Oil (Quart)   |
| 422   | 35824       |     | Muffler Optional  |
| 1159  | 30312       |     | Screw, 10-32 x 1/2"   |
| 1160  | 28820       |     | Screw, 10-32 x 1/2"   |
| 1160  | 27070       |     | Lockwasher  |



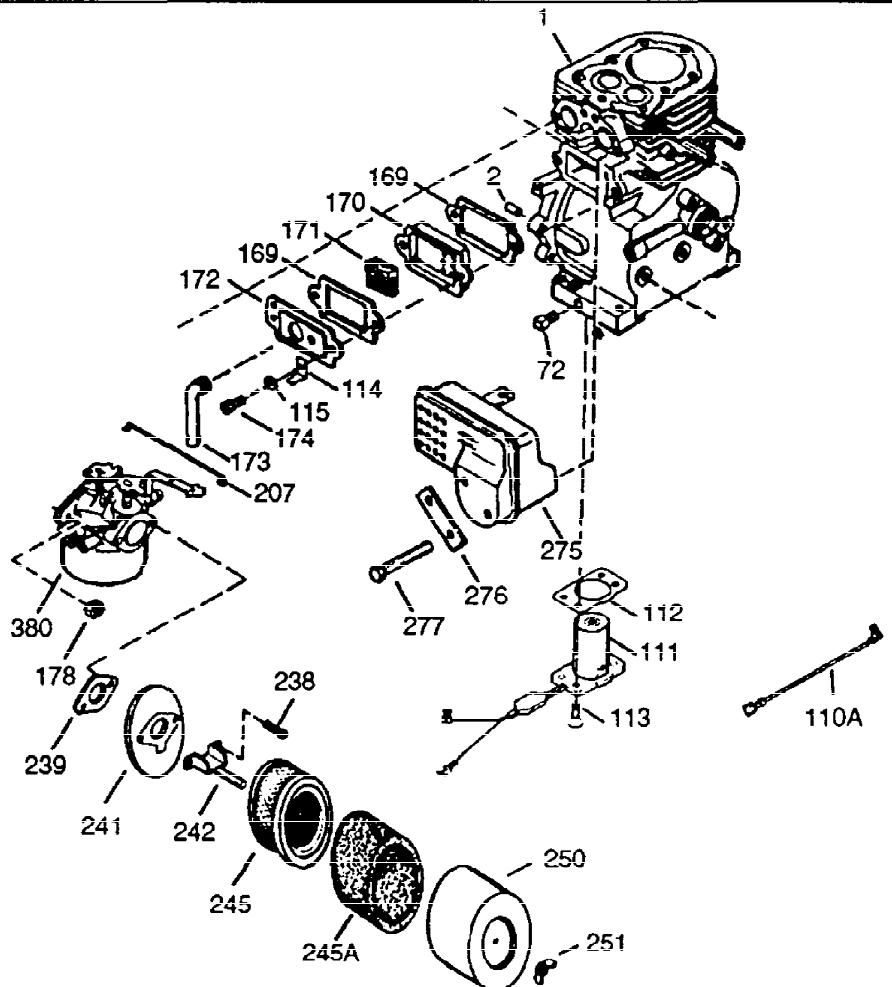
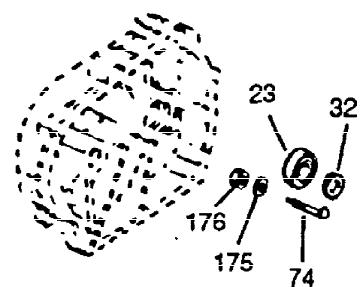
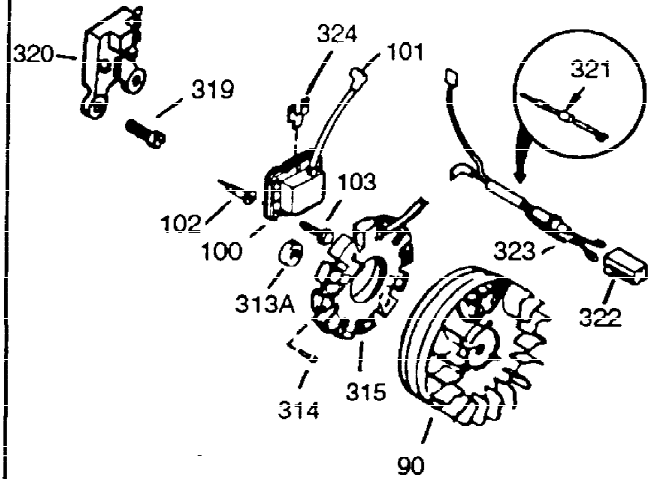
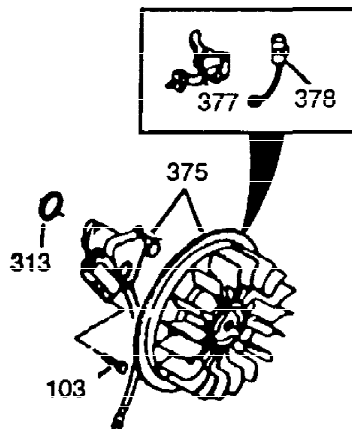
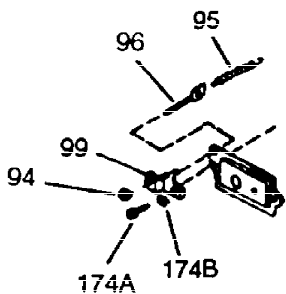
| Ref # | Part Number | Qty | Description        |
|-------|-------------|-----|--------------------|
| 1185  | 33816       |     | Hub & Screen Assy. |



OPTIONAL MUFFLER  
(QUIET)



OPTIONAL 110-120 VOLT  
STARTER MOTOR KIT



| Ref # | Part Number | Qty | Description   |
|-------|-------------|-----|---|
| 1     | 34922A      |     | Cylinder (CI liner)(3-5/16") (Incl. 2, 20 & 72)   |
| 2     | 27652       |     | Pin, Dowel  |
| 37A   | 30322       |     | Nut & Lockwasher, 8-32  |
| 72    | 27642       |     | Plug, Oil drain   |
| 90    | 611091      |     | Flywheel (w/ring gear)  |
| 94    | 33450       |     | Lock Nut, 10-32   |
| 95    | 30886A      |     | Spring, Governor bolt   |
| 96    | 30845A      |     | Bolt, Governor adjusting  |
| 100   | 35135       |     | Solid State Assy.   |
| 101   | 27276       |     | Cover, Spark plug   |
| 102   | 650872      |     | Stud, Solid state mounting  |
| 103   | 650814      |     | Screw, Torx T-15, 10-24 x 1"  |
| 129   | 650727      |     | Screw, 5/16-18 x 1-3/4 (Use as required)  |
| 131A  | 650713      |     | Screw, 5/16-18 x 5/8"   |
| 131   | 650737      |     | Screw, 1/4-20 x 1/2" (Use as required)  |
| 131   | 650738      |     | Screw, 1/4-20 x 5/8 (Use as required)   |
| 169   | 27896A      |     | * Gasket, Breather  |
| 170   | 28423       |     | Body, Breather  |
| 171   | 28424       |     | Element, Breather   |
| 172   | 28425       |     | Cover, Breather   |
| 173   | 35350       |     | Tube, Breather  |
| 174   | 650128      |     | Screw, 10-24 x 1/2"   |
| 178   | 29752       |     | Nut & Lockwasher, 1/4-28  |
| 207   | 33878       |     | Link, Governor lever-to-throttle  |
| 222A  |             |     | Pop Rivet (Can be purchased locally)  |
| 238   | 28820       |     | Screw, 10-32 x 1/2"   |
| 239   | 27272A      |     | * Gasket, Air cleaner   |
| 241   | 33266       |     | Bracket, Air cleaner  |
| 242   | 33267       |     | Bracket, Air cleaner  |
| 245   | 33268       |     | Element, Air cleaner  |
| 250B  | 33269A      |     | Cover, Air cleaner  |
| 251   | 650513      |     | Nut, Wing 1/4-20  |
| 275B  | 391026      |     | Muffler (Incl. 284, 284A & 416) (This spark arrester muffler can be used on any model.)                       |
| 276   | 35741       |     | Plate, Muffler locking  |
| 277   | 650729      |     | Screw, 5/16-18 x 3-3/16" (Use as required)  |
| 277   | 651002      |     | Screw, 5/16-18 x 4-1/4" (Use as required)   |
| 301A  | 410144B     |     | Fuel Cap (White Plastic) (Standard) (Use as required) (1.5" I.D.)   |
| 301A  | 33032       |     | Fuel Cap (Red Plastic) (Spurt Resistant, Low Profile) (Use as required) (1.5" I.D.)                           |
| 301A  | 34210       |     | Fuel Cap (Red Plastic) (Spurt Resistant, High Profile) (Use as required) (1.5" I.D.)                          |
| 301A  | 35355       |     | Fuel Cap (Red Plastic) (1.75" I.D.)   |
| 306   | 29673       |     | * Gasket, Oil filler  |
| 313A  | 33876       |     | Gasket, Stator (Used only on Std. point ign.)   |
| 338A  | 31291       |     | Plug, Cover   |
| 377   | 30547A      |     | Breaker Points (Use with Std. point ign.)   |
| 380   | 632255      |     | Carburetor (Incl. 184 & 379) (Refer to Division 5, Section A, page A4-4 for breakdown or Fiche 18B, Grid D-3) |
| 421   | 730226      |     | SAE 5W30 4-Cycle Engine Oil (Quart)   |
| 422   | 35824       |     | Muffler Optional  |