



INSTRUCTION SHEET

MODEL NO. 45-0391

ATV CAB

ASSEMBLY INSTRUCTIONS ON REVERSE SIDE

OPERATION AND MAINTENANCE



CAUTION: This ATV Cab is not designed for use above 25 m.p.h.

VISIBILITY

Your visibility may be affected with the addition of the ATV Cab. Be aware of your surroundings and operate ATV at reduced speed.

OBSTRUCTIONS

Watch for low tree limbs or other overhead obstructions that may not previously have interfered with operation of ATV. The extra height of the ATV Cab may cause these objects to become obstacles.

ROLLING UP DOOR FLAPS

The two side doors of your ATV Cab can be rolled up when operating in warmer conditions. Use the two straps located at the top of each door to secure them in place.

Note: Do not roll up doors in freezing temperatures! Damage to windows could result.

ROLLING UP ROOF FLAP

The top roof flap can be rolled up to provide more ventilation. Use the two straps located at the front of the ATV Cab to secure the rolled up roof flap in place.

CLEANING

The ATV Cab can be cleaned with a **soft** cloth and water.

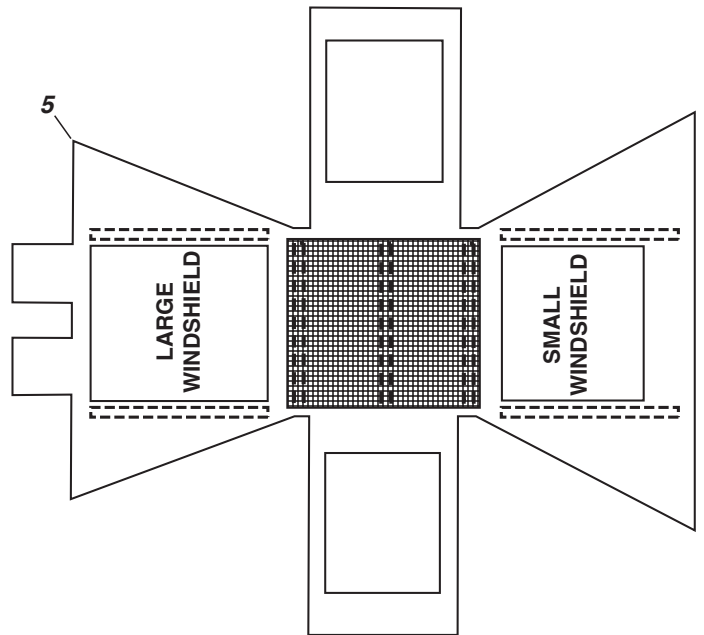
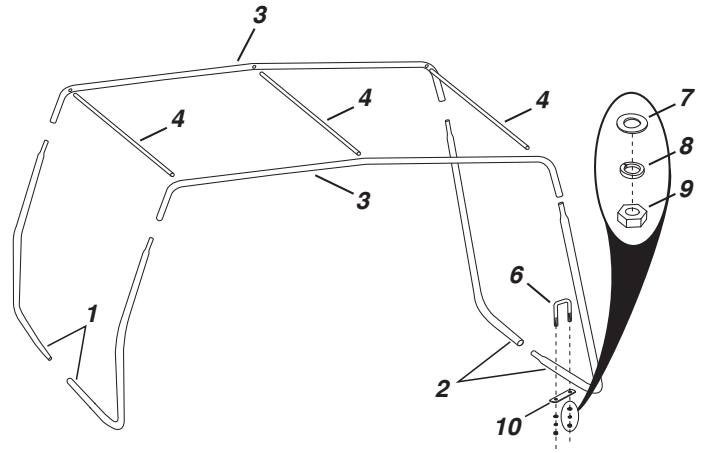
Note: Do not use soap or other abrasives when cleaning the windows of the ATV Cab. The windows can be easily scratched.

TOOLS REQUIRED FOR ASSEMBLY

(1) 10 mm wrench or adjustable wrench

ASSEMBLY INSTRUCTIONS

1. Spread fabric Canopy on the floor as shown.
2. Slide the Front Tubes (1) into the sleeves on both sides of the large (front) windshield as shown. Assemble bottoms of Front Tubes (1) together.
3. Slide the Rear Tubes (2) into the sleeves on both sides of the small (rear) windshield as shown. Assemble bottoms of Rear Tubes (2) together.
4. Assemble the ends of the Front Tubes (1) and Rear Tubes (2) into the ends of the two Top Tubes (3) as shown. Make sure the holes in the Top Tubes (3) face in.
5. Slide the Support Rods (4) through the sleeves in the top of the Canopy. Insert the Support Rods (4) into the holes in the Top Tubes (3) as shown.
6. Secure the Canopy to the Top Tubes (3) using the straps at the top of the Canopy.
7. Secure the Canopy to the bottom of the Front and Rear Tubes using the straps at the bottom of the Canopy.
8. Place the assembled Cab (canopy and frame tubes) onto your ATV so that it rests on the front and rear luggage racks. Make sure the end with the larger windshield and leg protection flaps is located at the front of the ATV.
9. Attach the Cab Frame to the ATV luggage racks using the four U-Bolts (6) and U-Bolt clamps (10). Secure the U-Bolt clamps (10) with the eight washers (7), lock washers (8) and nuts (9).
10. Place the leg protection flaps (at the front of the ATV Cab) onto the front of your ATV to determine the desired location for the adhesive velcro strips. Apply the adhesive velcro strips to the desired locations on the ATV. Secure the leg protection flaps to the velcro strips.



Ref. No.	Part No.	Qty.	Description
1	40209	2	Front Tube
2	40210	2	Rear Tube
3	40211	2	Top Tube
4	40212	3	Support Rod
5	40213	1	Fabric Canopy
6	49714	4	U-Bolt, 1/4-20 x 2"
7	43088	8	Washer, 1/4 Std.
8	43177	8	Washer, Lock 1/4-20
9	43178	8	Nut, 1/4-20
10	49715	4	U-Bolt Clamp
	40215	1	Instruction Sheet

This document (or manual) is protected under the U.S. Copyright Laws and the copyright laws of foreign countries, pursuant to the Universal Copyright Convention and the Berne convention. No part of this document may be reproduced or transmitted in any form or by any means, electronic or mechanical, including photocopying or recording, or by any information storage or retrieval system, without the express written permission of Agri-Fab, Inc. Unauthorized uses and/or reproductions of this manual will subject such unauthorized user to civil and criminal penalties as provided by the United States Copyright Laws.