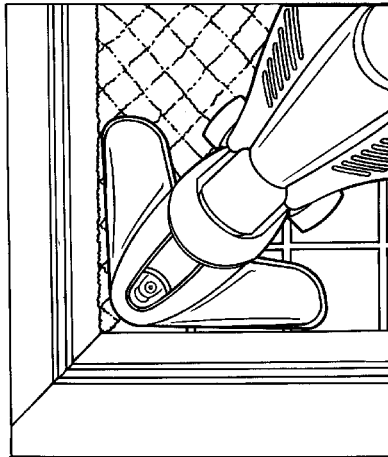
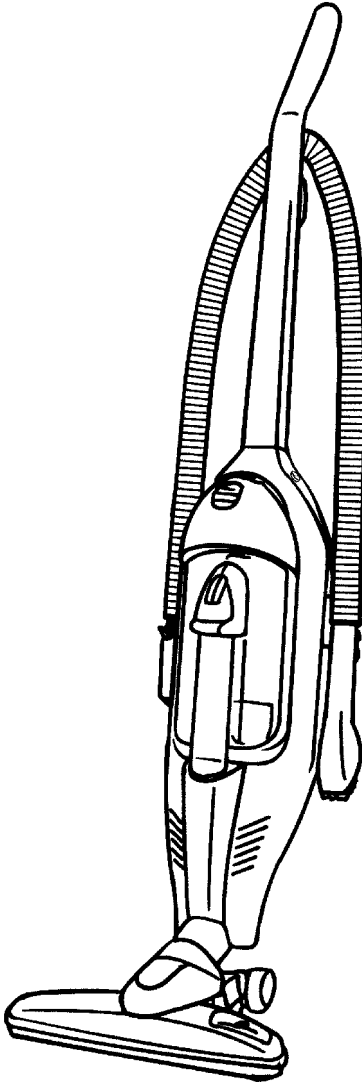


SECTION CONTENTS

<u>MODEL NO.</u>	<u>PAGE NO.</u>
083900	9-2 THRU 9-4
083910	9-2 THRU 9-4

MODEL No.

083900
083910

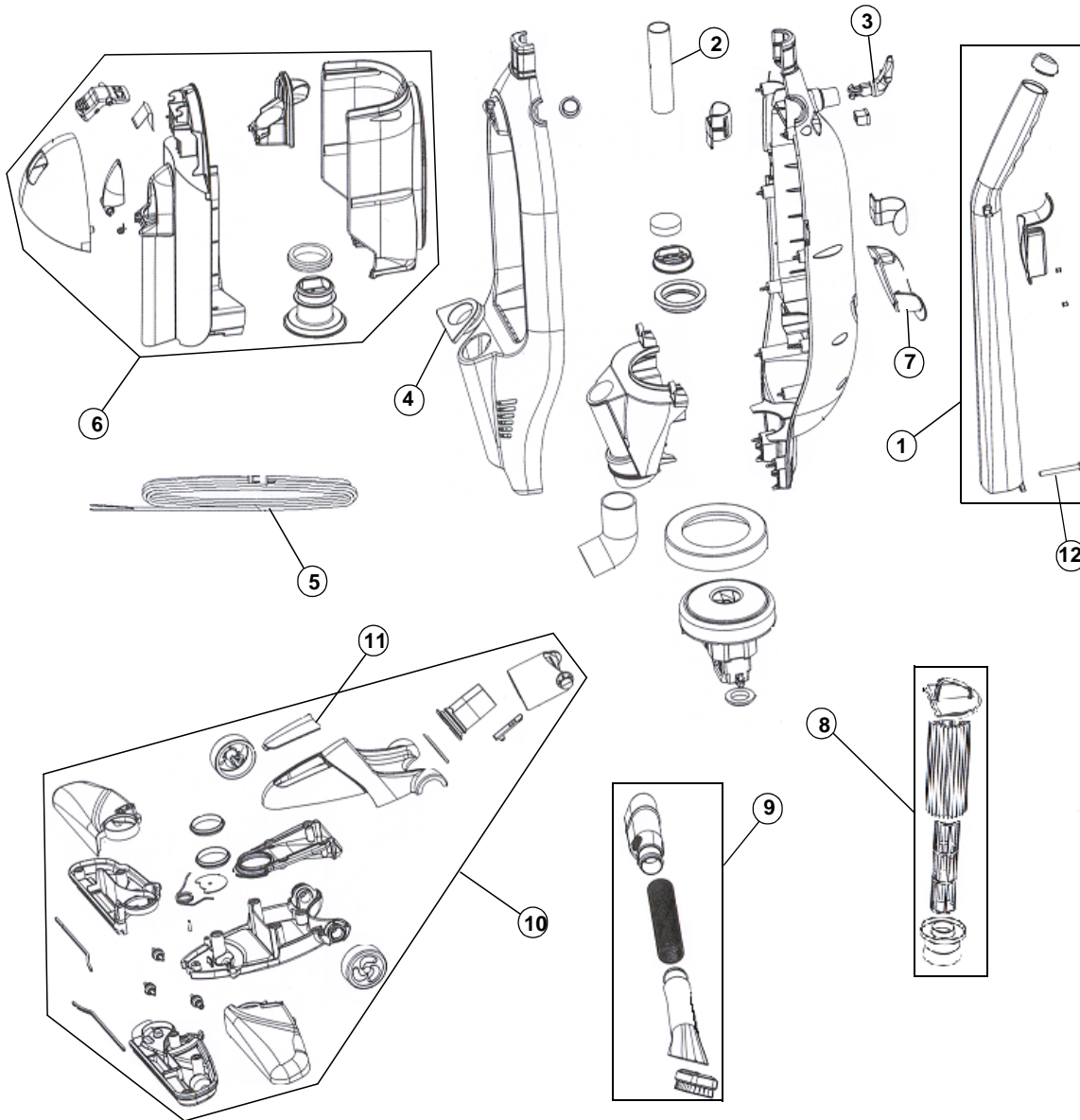


- * PRICING, SPECIFICATION'S, AND PRODUCT AVAILABILITY ARE SUBJECT TO CHANGE WITHOUT NOTICE. PRICING IS FOB FACTORY, GLENWILLOW, OH
- * ALL INFORMATION CONTAINED WITHIN THIS SERVICE MANUAL IS PROPRIETARY INFORMATION OF TTI FLOOR CARE NORTH AMERICA.
- * **WARNING:** TO REDUCE THE RISK OF ELECTRICAL SHOCK OR INJURY, ALWAYS DISCONNECT THE APPLIANCE CORD FROM THE ELECTRICAL OUTLET OR REMOVE BATTERY PRIOR TO SERVICING THE UNIT.

ASSEMBLY SCHEMATIC

MODEL No.

083900
083910





9

PART LISTING / PRICE LIST

MODEL No.

083900
083910

Item	Part Number	Model's To Fit	Part Description	Net Cost	List Cost
1	2390400000	083900	HANDLE ASSEMBLY	3.54	5.90
		083910	HANDLE ASSEMBLY	N.A.	N.A.
2	1385405000	083900, 083910	PIPE HANDLE	N.L.A.	N.L.A.
3	1380007M00	083900, 083910	CORD HOOK	N.L.A.	N.L.A.
4	1385017600	083900, 083910	MOTOR SUPPORT SEAL	N.L.A.	N.L.A.
5	1385085AC0	083900, 083910	POWER CORD	3.08	5.13
6	2395200000	083900	DIRT CUP ASSEMBLY	10.15	16.92
		083910	DIRT CUP ASSEMBLY	N.A.	N.A.
7	1385006AJ0	083900, 083910	CORD WRAP	N.L.A.	N.L.A.
8	2385300000	083900, 083910	FILTER ASSEMBLY	6.80	11.33
9	2395200600	083900, 083910	HOSE ASSEMBLY	2.99	4.98
10	2390100L00	083900	FLOOR TOOL ASSEMBLY	N.L.A.	N.L.A.
	2390100AU0	083910	FLOOR TOOL ASSEMBLY	N.L.A.	N.L.A.
11	1390145000	083900	ACCESS COVER	N.L.A.	N.L.A.
		083910	ACCESS COVER	N.A.	N.A.
12	1385406000	083900, 083910 SERIES A, B	HANDLE SCREW-MACHINED	.65	1.08
	1385407000	083900, 083910 SERIES C	HANDLE SCREW-SELF TAPPING	N.L.A.	N.L.A.



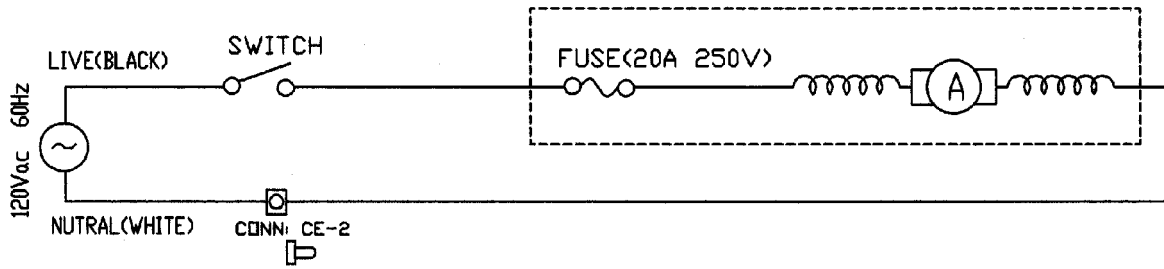
**POWER
FLEX™**

9

WIRING SCHEMATIC

MODEL No.

083900
083910



This document was created with Win2PDF available at <http://www.daneprairie.com>.
The unregistered version of Win2PDF is for evaluation or non-commercial use only.