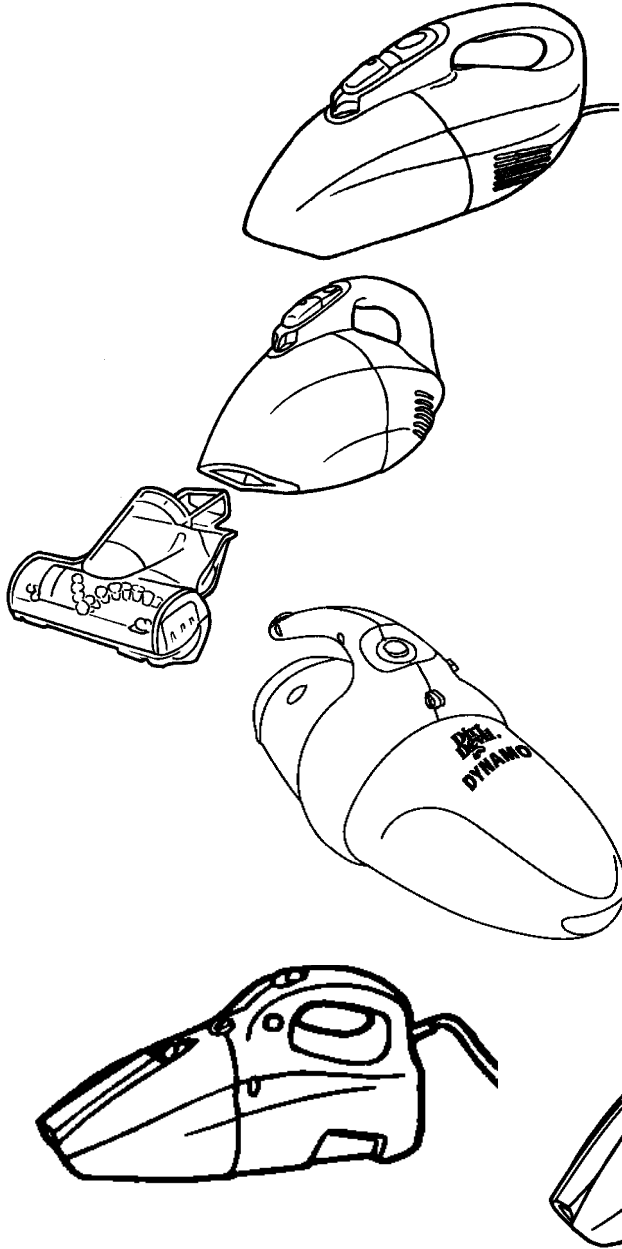


SECTION CONTENTS

MODEL No.



| <u>MODEL No.</u> | <u>PAGE No.</u> |
|------------------|-----------------|
| 08200 | 4-2 THRU 4-4 |
| 08201(X) | 4-2 THRU 4-4 |
| 08210 | 4-2 THRU 4-4 |
| 08215X | 4-2 THRU 4-4 |
| 08050 | 4-5 THRU 4-6 |
| 08055 | 4-5 THRU 4-6 |
| 08220(X) | 4-7 THRU 4-8 |
| 08225(X) | 4-7 THRU 4-8 |
| 08226(X) | 4-7 THRU 4-8 |
| HDH500 | 4-7 THRU 4-8 |
| SD20005RED | 4-7 THRU 4-8 |
| 0871 | 4-9 THRU 4-10 |
| 0871X | 4-9 THRU 4-10 |

| |
|------------|
| 08050 |
| 08055 |
| 08200 |
| 08201(X) |
| 08210 |
| 08215X |
| 08220(X) |
| 08225(X) |
| 08226(X) |
| 0871 |
| 0871X |
| HDH500 |
| SD20005RED |

* PRICING, SPECIFICATION'S, AND PRODUCT AVAILABILITY ARE SUBJECT TO CHANGE WITHOUT NOTICE. PRICING IS FOB FACTORY, GLENWILLOW, OH

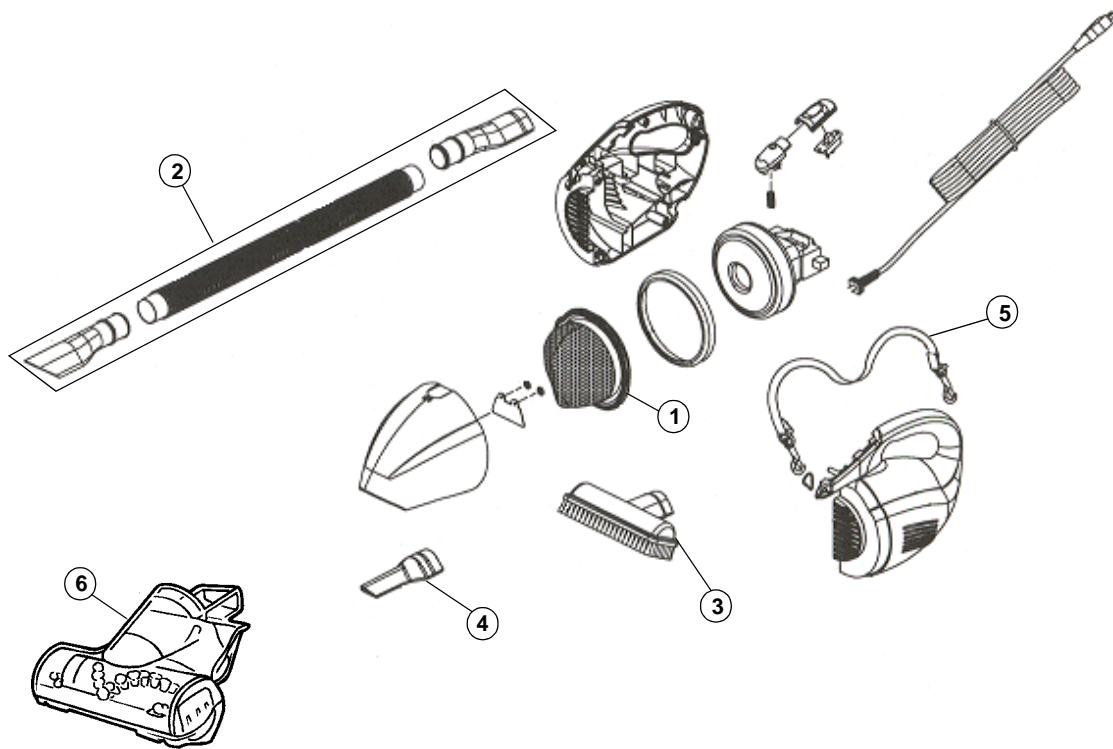
* ALL INFORMATION CONTAINED WITHIN THIS SERVICE MANUAL IS PROPRIETARY INFORMATION OF TTI FLOOR CARE NORTH AMERICA.

* **WARNING:** TO REDUCE THE RISK OF ELECTRICAL SHOCK OR INJURY, ALWAYS DISCONNECT THE APPLIANCE CORD FROM THE ELECTRICAL OUTLET OR REMOVE BATTERY PRIOR TO SERVICING THE UNIT.

ASSEMBLY SCHEMATIC

MODEL No.

08200
08201(X)
08210
08215X





4

PART LISTING / PRICE LIST

| Item | Part Number | Model's To Fit | Part Description | Net Cost | List Cost |
|------|-------------|--------------------------------|--|---------------|-----------|
| 1 | 3200550001 | 08200, 08201, 08210, 08215X | FILTER PACKAGE | 2.00 NON DISC | 3.33 |
| | 3DEA950001 | 08200, 08201, 08210, 08215X | F-5 FILTER - ONLY 2 PACK ALSO NEED # 7 FILTER ADAPTOR | 2.50 NON DISC | 4.17 |
| 2 | 2200560600 | 08200, 08201 | FLEXIBLE HOSE ASSEMBLY | N.L.A. | N.L.A. |
| | 2082132600 | 08210, 08215X | FLEXIBLE HOSE ASSEMBLY | 3.84 | 6.40 |
| 3 | 2200570600 | 08200, 08201 | FLOOR BRUSH ASSEMBLY | N.L.A. | N.L.A. |
| | 2082170600 | 08210, 08215X | FLOOR BRUSH ASSEMBLY | 2.25 | 3.75 |
| 4 | 1200580600 | 08200, 08201 | CREVICE TOOL | 1.00 | 1.67 |
| | 1082131600 | 08210, 08215X | CREVICE TOOL | 1.00 | 1.67 |
| 5 | 2200585000 | 08200, 08201, 08210, 08215X | SHOULDER STRAP | N.L.A. | N.L.A. |
| 6 | 2082115000 | 08210, 08215X | TURBO TOOL | N.L.A. | N.L.A. |
| 7 | 1DAA900B00 | 08200, 08201, 08210, 08215X | FILTER ADAPTOR | .62 | 1.03 |

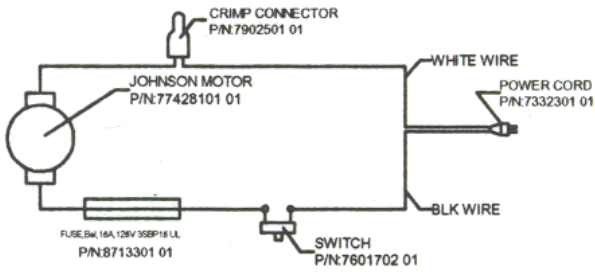
MODEL No.

08200
08201(X)
08210
08215X

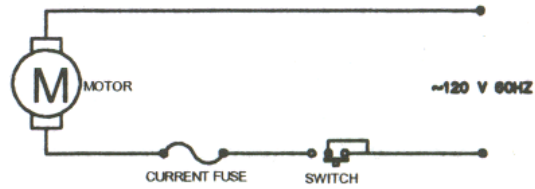
WIRING SCHEMATIC

MODEL No.

08200
08201(X)
08210
08215X



SCHEMATIC DIAGRAM

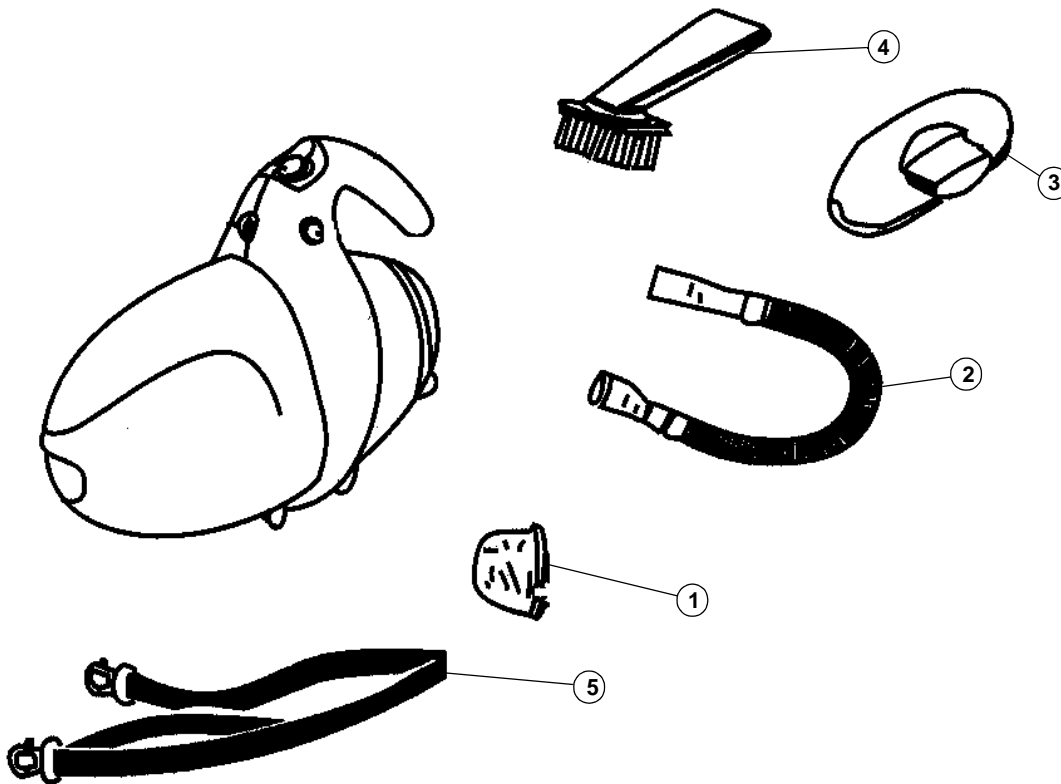


CIRCUIT DIAGRAM

ASSEMBLY SCHEMATIC

MODEL No.

08050
08055





DYNAMO



4

PART LISTING / PRICE LIST

| Item | Part Number | Model's To Fit | Part Description | Net Cost | List Cost |
|------|-------------|----------------|--------------------------|----------|-----------|
| 1 | 2805000000 | 08050, 08055 | FILTER PACKAGE | N.L.A. | N.L.A. |
| 2 | | 08050, 08055 | FLEXIBLE HOSE ASSEMBLY | N.A. | N.A. |
| 3 | | 08050, 08055 | UPHOLSTRY BRUSH ASSEMBLY | N.A. | N.A. |
| 4 | | 08050, 08055 | CREVICE BRUSH | N.A. | N.A. |
| 5 | | 08050, 08055 | SHOULDER STRAP | N.A. | N.A. |

MODEL No.

08050
08055



Scorpion™
Quick Flip



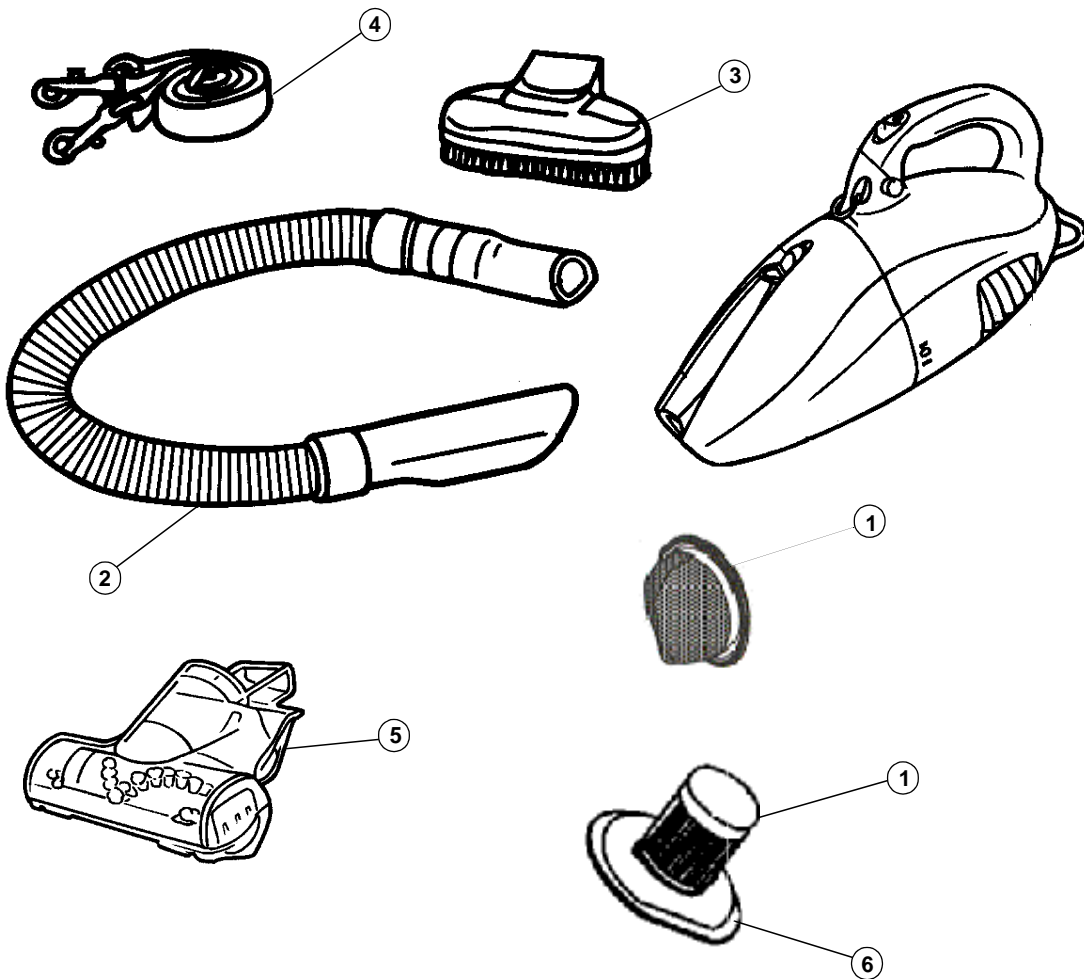
PLATINUM FORCE

4

ASSEMBLY SCHEMATIC

MODEL No.

08220(X)
08225(X)
08226(X)
HDH500
SD20005RED





4

PLATINUM FORCE

PART LISTING / PRICE LIST

| Item | Part Number | Model's To Fit | Part Description | Net Cost | List Cost |
|------|-------------|----------------|--|---------------|-----------|
| 1 | 3DE0900001 | ALL | F-5A FILTER WITH ADAPTOR - 2 PACK | 2.50 NON DISC | 4.17 |
| | 3DEA950001 | ALL | F-5 FILTER - ONLY 2 PACK ALSO NEED # 6 FILTER ADAPTOR | 2.50 NON DISC | 4.17 |
| 2 | | ALL | FLEXIBLE HOSE ASSEMBLY | N.A. | N.A. |
| 3 | | ALL | UPHOLSTRY BRUSH ASSEMBLY | N.A. | N.A. |
| 4 | 2200585000 | ALL | SHOULDER STRAP | N.L.A. | N.L.A. |
| 5 | | 08225 | TURBO TOOL | N.A. | N.A. |
| 6 | 1DEA900B00 | ALL | FILTER ADAPTOR - ONLY | 1.25 | 2.08 |

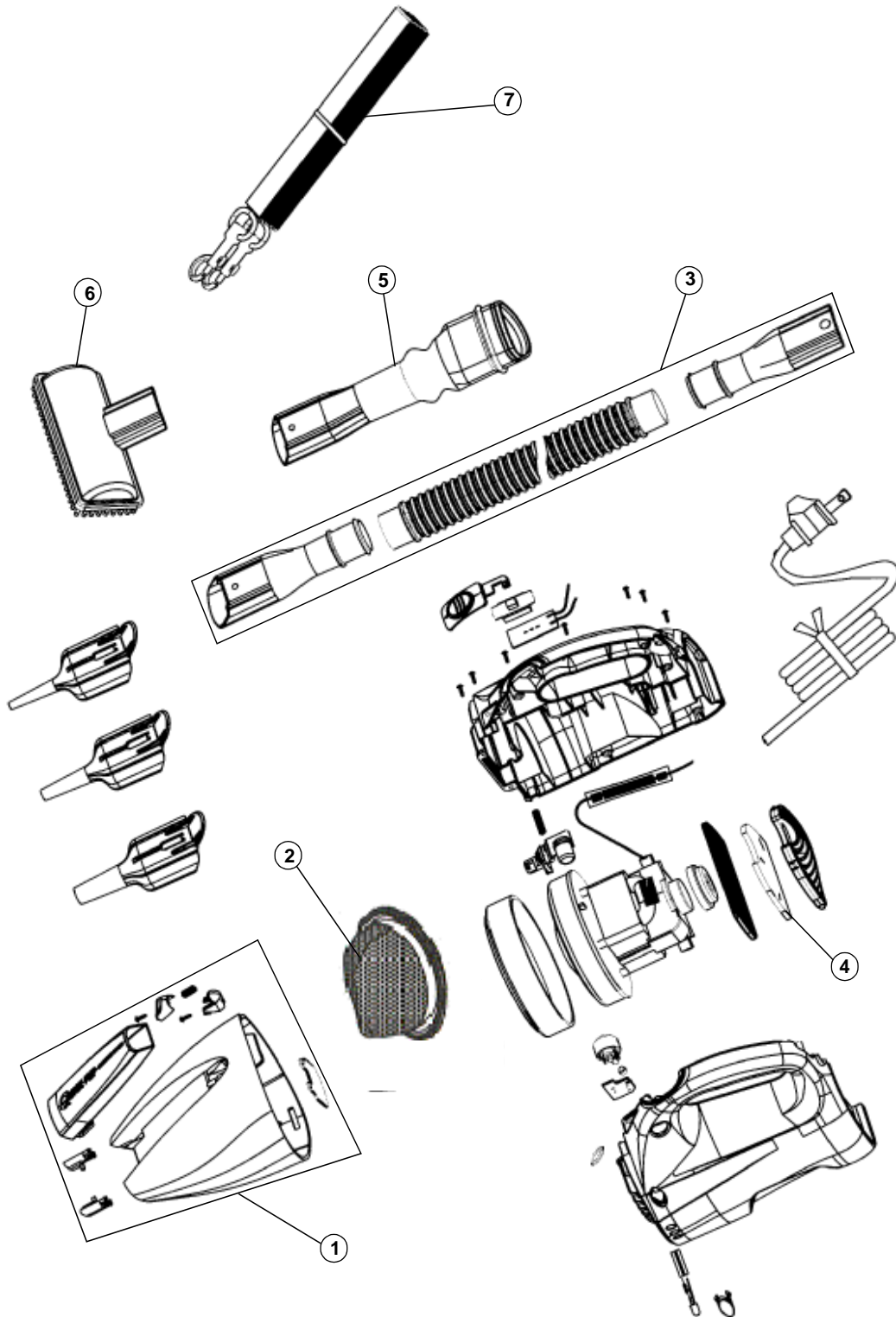
MODEL No.

08220(X)
08225(X)
08226(X)
HDH500
SD20005RED

ASSEMBLY SCHEMATIC

MODEL No.

0871
0871X





4

PART LISTING / PRICE LIST

MODEL No.

0871
0871X

| Item | Part Number | Model's To Fit | Part Description | Net Cost | List Cost |
|------|-------------|----------------|--|---------------|-----------|
| 1 | 2DK1000000 | 0871, 0871X | DIRT CUP ASSEMBLY | N.L.A. | N.L.A. |
| 2 | 3DEA950001 | 0871, 0871X | F-5 FILTER - ONLY 2 PACK ALSO NEED FILTER ADAPTOR | 2.50 NON DISC | 4.17 |
| | 3DE0900001 | 0871, 0871X | F-5A FILTER WITH ADAPTOR - 2 PACK | 2.50 NON DISC | 4.17 |
| | 1DEA900B00 | 0871, 0871X | FILTER ADAPTOR ONLY | 1.25 | 2.08 |
| 3 | 2DK1100000 | 0871, 0871X | HOSE ASSEMBLY | 3.12 | 5.20 |
| 4 | 1DK1010000 | 0871, 0871X | EXHAUST FILTER | N.L.A. | N.L.A. |
| 5 | 1DK1020000 | 0871, 0871X | BLOWER ADAPTOR | 1.20 | 2.00 |
| 6 | 1DK1030000 | 0871, 0871X | UPHOLSTERY TOOL | .84 | 1.40 |
| 7 | 1DK1060000 | 0871, 0871X | SHOULDER STRAP | 1.89 | 3.15 |

This document was created with Win2PDF available at <http://www.daneprairie.com>.
The unregistered version of Win2PDF is for evaluation or non-commercial use only.