

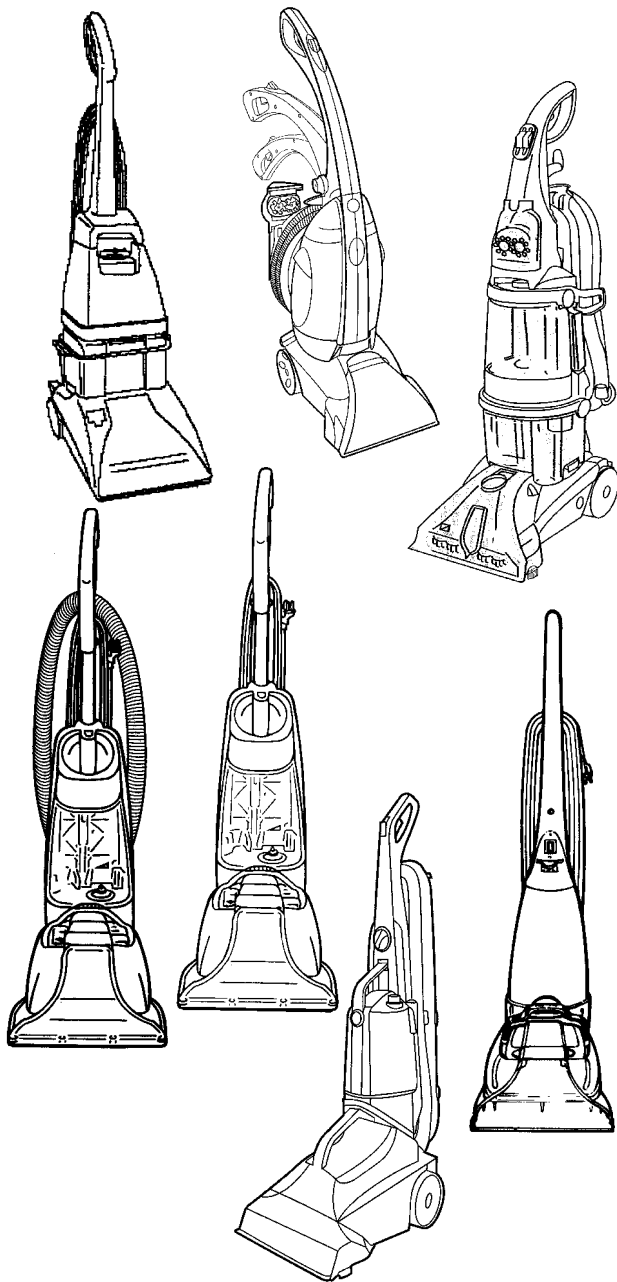


SECTION CONTENTS

<u>MODEL NO.</u>	<u>PAGE NO.</u>
F5810	15-2 THRU 15-4
FH50020	15-2 THRU 15-4
F5835-900	15-5 THRU 15-8
FH50015	15-5 THRU 15-8
F5914-900	15-9 THRU 15-14
F5915-100	15-9 THRU 15-14
F5915-900	15-9 THRU 15-14
F5917-900	15-9 THRU 15-14
F5918-900	15-9 THRU 15-14
FH50045(B)	15-9 THRU 15-14
FH50046	15-9 THRU 15-14
F6207-900	15-15 THRU 15-20
F6212-900	15-15 THRU 15-20
F6215-900	15-15 THRU 15-20
F7222-900	15-21 THRU 15-33
F7227-900	15-21 THRU 15-33
F7411-900	15-21 THRU 15-33
F7412-900	15-21 THRU 15-33
F7428-900	15-21 THRU 15-33
F7429-900	15-21 THRU 15-33
F7450-100	15-21 THRU 15-33
F7452-900	15-21 THRU 15-33
FH50039	15-21 THRU 15-33
FH50040	15-21 THRU 15-33
FH50050	15-21 THRU 15-33
FH50010	15-34 THRU 15-36
FH50030	15-34 THRU 15-36
FH50035	15-37 THRU 15-39
FH50005	15-40 THRU 15-42
FH50210	15-43 THRU 15-42
FH50220	15-43 THRU 15-45
FH50230	15-43 THRU 15-45
FH50240	15-43 THRU 15-45

MODEL No.

- F5810
- F5835-900
- F5914-900
- F5915-100
- F5915-900
- F5917-900
- F5918-900
- F6207-900
- F6212-900
- F6215-900
- F7222-900
- F7227-900
- F7411-900
- F7412-900
- F7428-900
- F7429-900
- F7450-100
- F7452-900
- FH50005
- FH50010
- FH50015
- FH50020
- FH50030
- FH50035
- FH50039
- FH50040
- FH50045
- FH50046
- FH50050
- FH50010
- FH50220
- FH50230
- FH50240



* PRICING, SPECIFICATION'S, AND PRODUCT AVAILABILITY ARE SUBJECT TO CHANGE WITHOUT NOTICE. PRICING IS FOB FACTORY, CANTON, OH

* ALL INFORMATION CONTAINED WITHIN THIS SERVICE MANUAL IS PROPRIETARY INFORMATION OF TTI FLOOR CARE NORTH AMERICA.

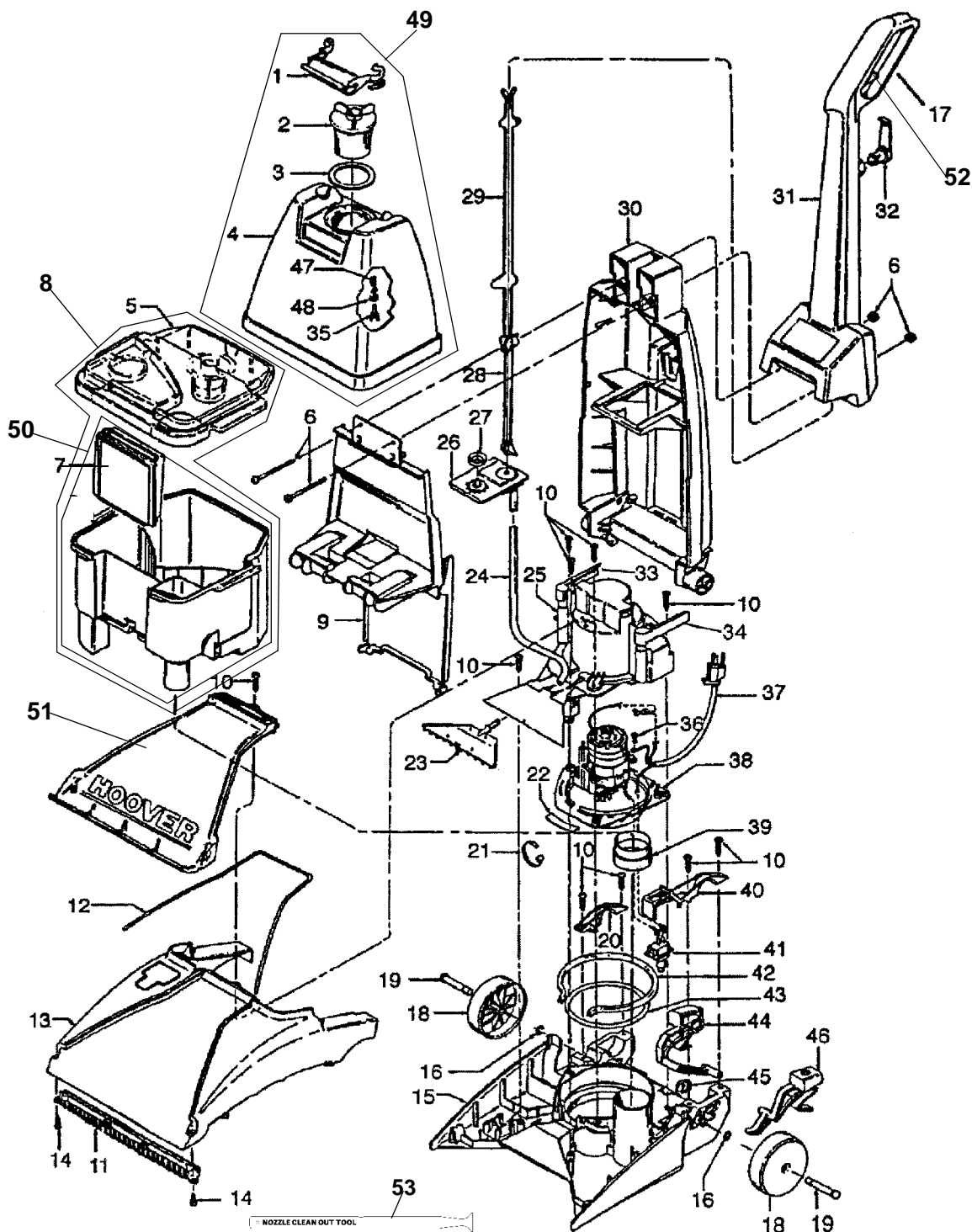
* **WARNING:** TO REDUCE THE RISK OF ELECTRICAL SHOCK OR INJURY, ALWAYS DISCONNECT THE APPLIANCE CORD FROM THE ELECTRICAL OUTLET OR REMOVE BATTERY PRIOR TO SERVICING THE UNIT.



ASSEMBLY SCHEMATIC

MODEL NO.

F5810
FH50020





15

PART LISTING / PRICE LIST

MODEL No.

F5810
FH50020

ITEM	PART NUMBER	MODELS TO FIT	PART DESCRIPTION	LIST COST
1	39457053	F5810, FH50020	SOLUTION TANK HANDLE - MAGNESIUM GRAY	2.17
	522209001	F5810, FH50020	SOLUTION TANK HANDLE - SATIN SILVER	PEND
2	90001288	F5810, FH50020	CAP ASSEMBLY - BLACK	1.69
3	38784062	F5810, FH50020	GASKET	1.46
4	42272134	F5810, FH50020	SOLUTION TANK ASSEMBLY COMPLETE	34.01
5	42272111	F5810, FH50020	RECOVERY TANK LID WITH FILTER	34.01
6	40201145	F5810, FH50020	HANDLE HARDWARE ASSEMBLY	2.26
7	90001217	F5810	DUCT ORDER 38777106	N.L.A.
8	38777081	F5810, FH50020	RECOVERY TANK COMPLETE WITH LID ASSEMBLY - REVISED DUCT TRANSLUCENT FROST	49.67
	522207001	F5810, FH50020	RECOVERY TANK COMPLETE WITH LID ASSEMBLY - REVISED DUCT STORM GRAY	PEND
9	37276029	F5810, FH50020	HANDLE COVER - MAGNESIUM GRAY	9.74
10	21447020	F5810, FH50020	SCREW	.57
11	48447002	F5810, FH50020	BRUSH BACK ASSEMBLY	7.93
12	38781037	F5810, FH50020	NOZZLE SEAL	2.59
13	37271124	F5810	NOZZLE HOOD - BLUE	30.31
	37271169	FH50020	NOZZLE HOOD - BLACK	N.A.
14	21447228	F5810, FH50020	SCREW - SELF TAPPING	.57
15	90001221	F5810, FH50020	NOZZLE BASE	21.54
16	160017--	F5810, FH50020	LOCK RING	.58
17	39458009	F5810, FH50020	UPPER HANDLE LEVER GUARD - MAGSM GRAY	2.10
18	38522091	F5810, FH50020	REAR WHEEL - MAGNESIUM GRAY	1.47
	522206001	F5810, FH50020	REAR WHEEL - BLACK	PEND
19	32434007	F5810, FH50020	REAR AXLE	1.12
20	36131124	F5810, FH50020	TRUNNION COVER - RIGHT MAGNESIUM GRAY	2.26
	522193001	F5810, FH50020	TRUNNION COVER - RIGHT SHADOW GRAY	PEND
21	27479307	F5810, FH50020	CABLE TIE	.45
22	34122021	F5810, FH50020	MOTOR HOUSING SEAL	.67
23	43411006	F5810, FH50020	DISTRIBUTOR ASSEMBLY	6.79
24	40309002	F5810, FH50020	TUBING	3.73
25	40309005	F5810	MOTOR / DISTRIBUTION COVER KIT	15.87
	37196139	FH50020	MOTOR / DISTRIBUTION COVER KIT	12.46
26	90001225	F5810, FH50020	RESERVOIR ASSEMBLY	6.79
27	38784060	F5810, FH50020	SOLUTION TANK SEAL	1.46
28	38458033	F5810, FH50020	CONTROL ROD - LOWER	1.46



15

PART LISTING / PRICE LIST

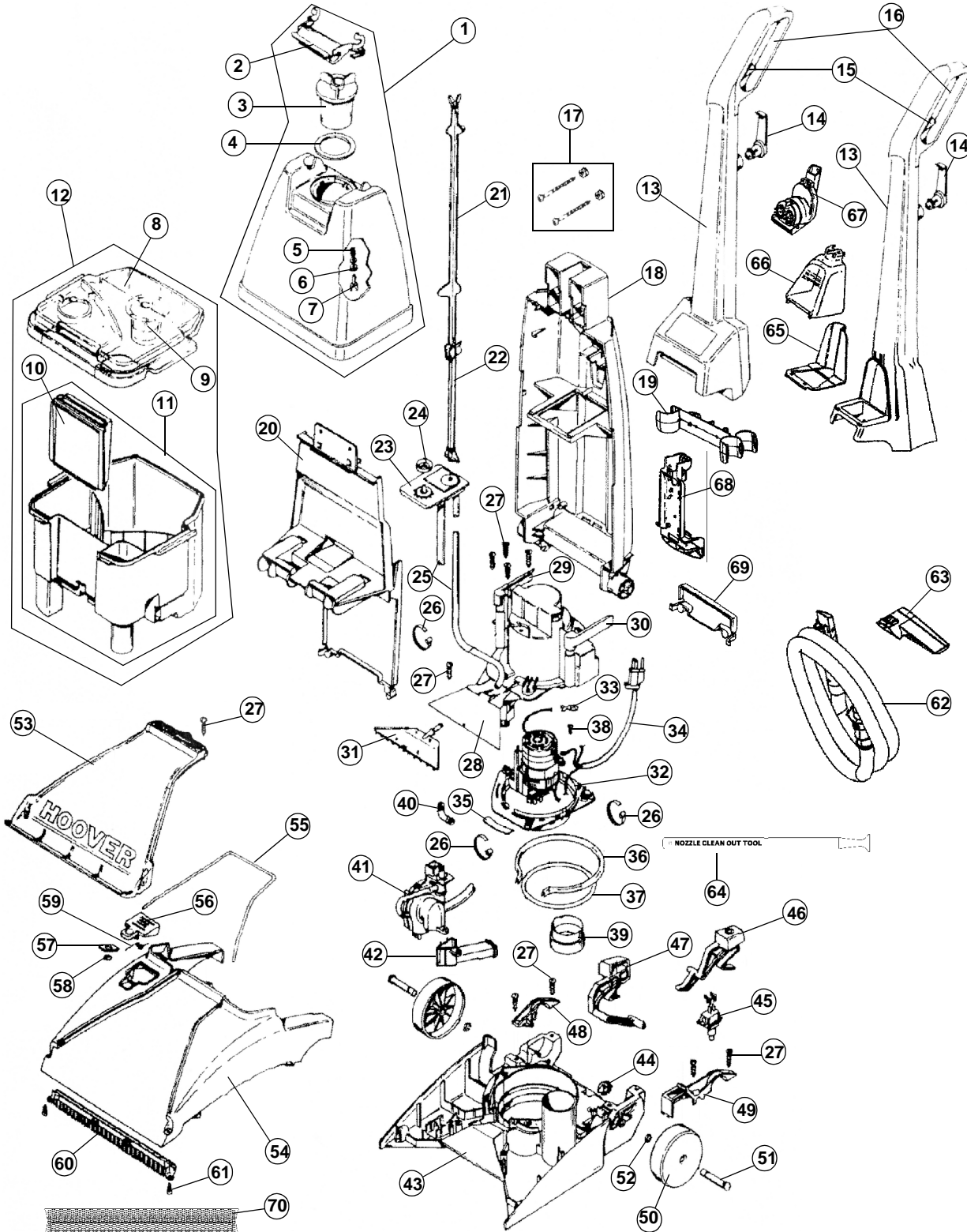
MODEL No.

F5810
FH50020

ITEM	PART NUMBER	MODELS TO FIT	PART DESCRIPTION	LIST COST
29	38458031	F5810, FH50020	CONTROL ROD - UPPER	1.81
30	48669030	F5810, FH50020	LOWER HANDLE ASSEMBLY COMPLETE	43.40
31	92001072	F5810, FH50020	UPPER HANDLE ASSEMBLY	19.83
32	39442048	F5810, FH50020	CORD WRAP - MAGNESIUM GRAY	1.14
33	36151043	F5810, FH50020	TANK RELEASE LATCH - RIGHT MAGNSM GRAY	.86
	522194001	F5810, FH50020	TANK RELEASE LATCH - RIGHT SATIN SILVER	PEND
34	36151044	F5810, FH50020	TANK RELEASE LATCH - LEFT MAGNSM GRAY	.86
	522194002	F5810, FH50020	TANK RELEASE LATCH - LEFT SATIN SILVER	PEND
35	38717009	F5810, FH50020	VALVE STEM	2.26
36	21447232	F5810, FH50020	SCREW - SELF TAPPING	.57
37	46583125	F5810, FH50020	POWER CORD - 21'	14.60
38	27212079	F5810, FH50020	MOTOR ASSEMBLY	57.38
39	38784063	F5810, FH50020	STANDPIPE SEAL	3.39
40	36131125	F5810, FH50020	TRUNNION COVER - LEFT MAGNESIUM GRAY	.93
	522193002	F5810, FH50020	TRUNNION COVER - LEFT SHADOW GRAY	PEND
41	28218061	F5810, FH50020	SWITCH	2.80
42	38781039	F5810, FH50020	MOTOR BASE SEAL	2.59
43	38784064	F5810, FH50020	MOTOR INTAKE SEAL	4.53
44	38458042	F5810, FH50020	HANDLE RELEASE LEVER - BLACK	4.07
45	522205001	F5810, FH50020	HANDLE RELEASE LEVER - SATIN SILVER	PEND
45	90001281	F5810, FH50020	CORD RETAINER	.85
46	38434025	F5810, FH50020	SWITCH ACTUATOR LEVER - BLACK	3.39
	522203001	F5810, FH50020	SWITCH ACTUATOR LEVER - SATIN SILVER	PEND
47	38312014	F5810, FH50020	SPRING	1.12
48	38784061	F5810, FH50020	VALVE SEAL	1.12
49	42272134	F5810, FH50020	SOLUTION TANK ASSEMBLY WITH CAP FROST	34.01
	304040001	F5810, FH50020	SOLUTION TANK ASSEMBLY WITH CAP STORM GRAY	PEND
50	38777106	F5810, FH50020	RECOVERY TANK WITH DUCT ONLY REVISED	15.25
51	90001248	F5810, FH50020	NOZZLE FRONT - CLEAR	10.34
52	38434028	F5810, FH50020	CONTROL LEVER - BLACK	1.46
53	39514003	F5810, FH50020	NOZZLE CLEAN OUT TOOL	.54



ASSEMBLY SCHEMATIC



MODEL NO.

F5835-900
FH50015



15

PART LISTING / PRICE LIST

MODEL No.

F5835-900
FH50015

ITEM	PART NUMBER	MODELS TO FIT	PART DESCRIPTION	LIST COST
1	42272134	F5835900, FH50015	SOLUTION TANK ASSEMBLY WITH CAP FROST TRANSLUCENT	34.01
	304040001	F5835900, FH50015	SOLUTION TANK ASSEMBLY WITH CAP STORM GRAY	PEND
2	39457053	F5835900, FH50015	SOLUTION TANK HANDLE - MAGNESIUM GRAY	2.17
	522209001	F5835900, FH50015	SOLUTION TANK HANDLE - SATIN SILVER	PEND
3	90001288	F5835900, FH50015	CAP ASSEMBLY - BLACK	1.69
4	38784062	F5835900, FH50015	GASKET	1.46
5	38312014	F5835900, FH50015	SPRING	1.12
6	38784061	F5835900, FH50015	VALVE SEAL	1.12
7	38717009	F5835900, FH50015	VALVE STEM	2.26
8	42272111	F5835900, FH50015	RECOVERY TANK LID WITH FILTER	34.01
	38784070	F5835900, FH50015	FLOAT RETAINER SEAL	2.59
	38719027	F5835900, FH50015	FLOAT RETAINER	2.59
	43538001	F5835900, FH50015	FLOAT ASSEMBLY	3.73
9	38762014	F5835900, FH50015	FILTER - RECOVERY TANK LID	4.19
10	90001217	F5835900, FH50015	DUCT ORDER 38777106	N.A.
11	38777106	F5835900, FH50015	RECOVERY TANK WITH DUCT ONLY REVISED	15.25
12	38777081	F5835900, FH50015	RECOVERY TANK COMPLETE WITH LID ASSEMBLY - REVISED DUCT TRANSLUCENT FROST	49.67
	522207001	F5835900, FH50015	RECOVERY TANK COMPLETE WITH LID ASSEMBLY - REVISED DUCT STORM GRAY	PEND
13	522248001	F5835900	UPPER HANDLE ASSEMBLY	PEND
	90001301	FH50015	UPPER HANDLE ASSEMBLY	22.67
14	39442056	F5835900	CORD WRAP - SHADOW GRAY	.66
	90001273	FH50015	CORD WRAP - MAGNESIUM GRAY	1.69
15	38434028	F5835900, FH50015	CONTROL LEVER - BLACK	1.46
16	39458009	F5835900, FH50015	UPPER HANDLE LEVER GUARD - MAGNSM GRAY	2.10
17	40201245	F5835900	HANDLE HARDWARE ASSEMBLY 2 SCREWS 4-1/8" - 3 NUTS	2.94
	40201149	FH50015	HANDLE HARDWARE ASSEMBLY 2 SCREWS 3-15/16" - 3 NUTS	2.26
18	39466108	F5835900, FH50015	LOWER HANDLE ASSEMBLY COMPLETE MAGNESIUM GRAY	47.04
19	36433205	F5835900, FH50015	HOSE HOLDER - MAGNESIUM GRAY	N.A.
	522196001	F5835900, FH50015	HOSE HOLDER - SHADOW GRAY	PEND
20	37276029	F5835900, FH50015	HANDLE COVER - MAGNESIUM GRAY	9.74



15

PART LISTING / PRICE LIST

MODEL No.

F5835-900
FH50015

ITEM	PART NUMBER	MODELS TO FIT	PART DESCRIPTION	LIST COST
21	38458037	F5835900	CONTROL ROD - UPPER	2.26
	38458031	FH50015	CONTROL ROD - UPPER	1.81
22	38458033	F5835900, FH50015	CONTROL ROD - LOWER	1.46
23	43516012	F5835900, FH50015	RESERVOIR ASSEMBLY	6.79
24	38784060	F5835900, FH50015	SOLUTION TANK SEAL	1.46
25	40309002	F5835900, FH50015	TUBING	3.73
26	27479307	F5835900, FH50015	CABLE TIE	.45
27	21447020	F5835900, FH50015	SCREW	.57
28	37196139	F5835900, FH50015	MOTOR / DISTRIBUTION COVER KIT	12.46
29	36151043	F5835900, FH50015	TANK RELEASE LATCH - RIGHT MAGNSM GRAY	.86
	522194001	F5835900, FH50015	TANK RELEASE LATCH - RIGHT SATIN SILVER	PEND
30	36151044	F5835900, FH50015	TANK RELEASE LATCH - LEFT MAGNSM GRAY	.86
	522194002	F5835900, FH50015	TANK RELEASE LATCH - LEFT SATIN SILVER	PEND
31	43411006	F5835900, FH50015	DISTRIBUTOR ASSEMBLY	6.79
32	27212079	F5835900, FH50015	MOTOR ASSEMBLY	57.38
33	012227--	F5835900, FH50015	TERMINALS	.79
34	46583125	F5835900, FH50015	POWER CORD - 21'	14.60
35	34122021	F5835900, FH50015	MOTOR HOUSING SEAL	.67
36	38781039	F5835900, FH50015	MOTOR BASE SEAL	2.59
37	38784064	F5835900, FH50015	MOTOR INTAKE SEAL	4.53
38	21447246	F5835900, FH50015	SCREW - 3.125"	1.12
39	38784063	F5835900, FH50015	STANDPIPE SEAL	3.39
40	33241001	F5835900, FH50015	ELBOW CONNECTOR	2.26
41	43582018	F5835900, FH50015	PUMP ASSEMBLY COMPLETE	16.43
42	38664001	F5835900, FH50015	ELBOW DUCT	2.67
43	37272114	F5835900, FH50015	NOZZLE BASE - MAGNESIUM GRAY	20.40
44	90001281	F5835900, FH50015	CORD RETAINER - BLACK	.85
45	28218061	F5835900, FH50015	SWITCH	2.80
46	38434025	F5835900, FH50015	SWITCH ACTUATOR LEVER - BLACK	3.39
	522203001	F5835900, FH50015	SWITCH ACTUATOR LEVER - SATIN SILVER	3.39
47	38458042	F5835900, FH50015	HANDLE RELEASE LEVER - BLACK	4.07
	522205001	F5835900, FH50015	HANDLE RELEASE LEVER - SATIN SILVER	PEND
48	36131124	F5835900, FH50015	TRUNNION COVER - RIGHT MAGNESIUM GRAY	2.26
	522193001	F5835900, FH50015	TRUNNION COVER - RIGHT SHADOW GRAY	PEND



15

PART LISTING / PRICE LIST

MODEL No.

F5835-900
FH50015

ITEM	PART NUMBER	MODELS TO FIT	PART DESCRIPTION	LIST COST
49	36131125	F5835900, FH50015	TRUNNION COVER - LEFT MAGNESIUM GRAY	.93
	522193002	F5835900, FH50015	TRUNNION COVER - LEFT SHADOW GRAY	PEND
50	38522091	F5835900, FH50015	REAR WHEEL - MAGNESIUM GRAY	1.47
	522206001	F5835900, FH50015	REAR WHEEL - BLACK	PEND
51	32434007	F5835900, FH50015	REAR AXLE	1.12
52	160017--	F5835900, FH50015	LOCK RING	.58
53	90001248	F5835900, FH50015	NOZZLE FRONT - CLEAR	10.34
54	90001249	F5835900	NOZZLE HOOD - MYSTIC LIME GREEN	39.68
	37271153	FH50015	NOZZLE HOOD - BLACK	N.A.
55	38781037	F5835900, FH50015	NOZZLE SEAL	2.59
56	37257314	F5835900	HOSE ACCESS DOOR - MYSTIC LIME GREEN	N.A.
	37257297	FH50015	HOSE ACCESS DOOR - BLACK	3.39
57	38783019	F5835900, FH50015	ACCESS DOOR SEAL	.59
58	21362006	F5835900, FH50015	HOSE ACCESS DOOR SPEED NUT	.85
59	38351017	F5835900, FH50015	ACCESS DOOR SPRING	1.12
60	48447002	F5835900, FH50015	BRUSH BACK ASSEMBLY - DUAL	7.93
61	21447228	F5835900, FH50015	SCREW - SELF TAPPING	.57
62	90001351	F5835900, FH50015	HOSE ASSEMBLY - MAGNESIUM GRAY	41.99
63	38613040	F5835900, FH50015	STAIR / UPHOLSTERY TOOL WITH BRUSH	9.30
64	39514003	F5835900, FH50015	NOZZLE CLEAN OUT TOOL	.54
65	36433212	F5835900	TOOL HOLDER - MAGNESIUM GRAY	1.89
	522195001	F5835900	TOOL HOLDER - SHADOW GRAY	PEND
66	37276033	F5835900	TOOL COVER - CLEAR	5.66
67	302598001	F5835900	TURBINE NOZZLE - LIME GREEN	32.07
68	36433234	F5835900	LOWER TOOL HOLDER - MAGNESIUM GRAY	3.42
	21447041	F5835900	SCREW - LOWER TOOL HOLDER	.58
69	37276035	F5835900	SOLUTION TUBE COVER - MAGNESIUM GRAY	.70
	522199001	F5835900	SOLUTION TUBE COVER - SHADOW GRAY	PEND
70	48417008	F5835900	BARE FLOOR TOOL ASSEMBLY	2.92



SteamVac

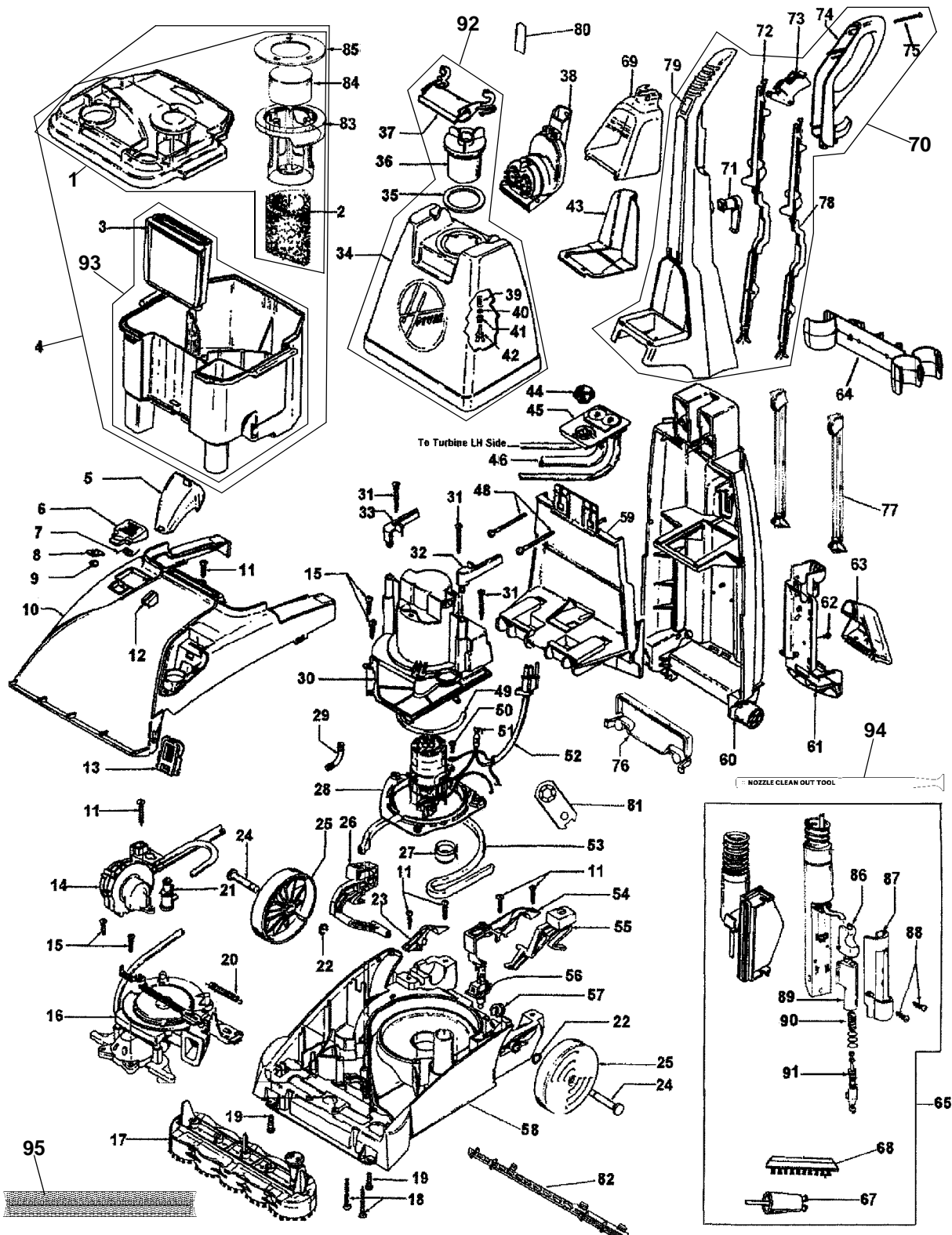
SpinScrub
The Multiple Brush System only from Hoover



SteamVac
with
CLEAN
SURGE™

15

ASSEMBLY SCHEMATIC



MODEL NO.

- F5914-900
- F5915-100
- F5915-900
- F5917-900
- F5918-900
- FH50045
- FH50046



SteamVac

SpinScrub
The Multiple Brush System only from Hoover



SteamVac
with
CLEAR
SURGE™

15

PART LISTING / PRICE LIST

ITEM	PART NUMBER	MODELS TO FIT	PART DESCRIPTION	LIST COST
1	42272111	ALL	RECOVERY TANK LID WITH FILTER	34.01
2	38762014	ALL	TANK FILTER	4.19
3	38661004	ALL	DUCT ORDER 38777106 #93	N.L.A.
4	38777081	ALL	RECOVERY TANK COMPLETE WITH LID - REVISED DUCT TRANSLUCENT FROST	49.67
	522207001	ALL	RECOVERY TANK COMPLETE WITH LID - REVISED DUCT STORM GRAY	PEND
5	39383106	ALL	LENS	2.82
6	37257307	F5914900	HOSE ACCESS DOOR - PATRIOT BLUE	3.39
	522235004	F5915100	HOSE ACCESS DOOR - WARM TITANIUM	PEND
	37257321	F5915900, FH50045	HOSE ACCESS DOOR - BERMUDA BLUE	N.A.
	37257297	F5917900	HOSE ACCESS DOOR - BLACK	3.39
	37257326	F5918900	HOSE ACCESS DOOR - WINTER GREEN	N.A.
	522235001	FH50046	HOSE ACCESS DOOR - LAZER BLUE METALLIC	PEND
7	38351017	ALL	ACCESS DOOR SPRING	1.12
8	38783021	ALL	SEAL	1.54
9	21362006	ALL	SPEED NUT	.85
10	37271110	F5914900	NOZZLE / HOOD - PATROIT BLUE	31.04
	522234004	F5915100	NOZZLE / HOOD - WARM TITANIUM	PEND
	37271143	F5915900, FH50045	NOZZLE / HOOD - BERMUDA BLUE	31.17
	37271136	F5917900	NOZZLE / HOOD - BLACK	24.50
	37271167	F5918900	NOZZLE / HOOD - WINTER GREEN	N.A.
	522234001	FH50046	NOZZLE / HOOD - LAZER BLUE METALLIC	PEND
11	21447020	ALL	SCREW	.57
12	38421127	ALL	INDICATOR KNOB - MAGNESIUM GRAY	.88
	522202001	ALL	INDICATOR KNOB - SATIN SILVER	PEND
13	43613009	ALL	SCREEN ASSEMBLY - BLACK	2.59
14	43582018	ALL	PUMP ASSEMBLY COMPLETE	16.43
15	21447217	ALL	SCREW - SELF TAPPING	1.12
16	43191021	ALL	TURBINE AND GEAR ASSMBLY - 5 BRUSH	34.01
17	48437022	ALL	BRUSH BLOCK - 5 BRUSH	27.21
18	21479438	ALL	SCREW	1.12
19	21447072	ALL	SCREW	.57
20	38333009	ALL	SPRING	1.12
21	43523004	ALL	QUICK DISCONNECT ASSEMBLY	5.24
22	160017--	ALL	LOCK RING	.58

MODEL No.

F5914-900
F5915-100
F5915-900
F5917-900
F5918-900
FH50045
FH50046



SteamVac

SpinScrub
The Multiple Brush System only from Hoover



SteamVac
with
CLEAN
SURGE™

15

PART LISTING / PRICE LIST

ITEM	PART NUMBER	MODELS TO FIT	PART DESCRIPTION	LIST COST
23	36131124	ALL	TRUNNION COVER - RIGHT MAGNSM GRAY	2.26
	522193001	ALL	TRUNNION COVER - RIGHT SHADOW GRAY	PEND
24	32434007	ALL	REAR AXLE	1.12
25	38522091	ALL	REAR WHEEL - MAGNESIUM GRAY	1.47
	522206001	ALL	REAR WHEEL - BLACK	PEND
26	38458042	ALL	HANDLE RELEASE LEVER - BLACK	4.07
	522205001	ALL	HANDLE RELEASE LEVER - SATIN SILVER	PEND
27	38784063	ALL	STANDPIPE SEAL	3.39
28	27212077	F5914900	MOTOR ASSEMBLY	64.73
	27212074	F5915100, F5915900, F5917900, F5918900, FH50045, FH50046	MOTOR ASSEMBLY	56.39
	49811079	ALL	LEAD WIRE - WHITE	1.12
29	33241001	ALL	ELBOW CONNECTOR	2.26
30	40309027	F5914900	MOTOR COVER	21.54
	37196190	F5915100, F5915900, F5917900, F5918900, FH50045, FH50046	MOTOR COVER	9.63
31	21447232	ALL	SCREW - SELF TAPPING	.57
32	36151044	ALL	TANK RELEASE LATCH - LEFT MAG GRAY	.86
	522194002	ALL	TANK RELEASE LATCH - LEFT SATIN SILVER	PEND
33	36151043	ALL	TANK RELEASE LATCH - RIGHT MAG GRAY	.86
	522194001	ALL	TANK RELEASE LATCH - RIGHT SATIN SILVER	PEND
34	42272134	ALL	SOLUTION TANK WITH CAP - FROST	34.01
	304040001	ALL	SOLUTION TANK WITH CAP - STORM GRAY	PEND
35	38784062	ALL	GASKET	1.46
36	90001288	ALL	CAP ASSEMBLY - BLACK	1.69
37	39457053	ALL	SOLUTION TANK HANDLE - MAGNSM GRAY	2.17
	522209001	ALL	SOLUTION TANK HANDLE - SATIN SILVER	PEND
38	302598001	ALL	TURBINE NOZZLE WITH RELEASE	32.07
39	38312014	ALL	SPRING	1.12
40		ALL	VALVE RING	N.A.
41	38784061	ALL	VALVE SEAL	1.12
42	38717009	ALL	VALVE STEM	2.26
43	36433212	ALL	TOOL HOLDER - MAGNESIUM GRAY	1.89
	522195001	ALL	TOOL HOLDER - SHADOW GRAY	PEND
44	38784060	ALL	SOLUTION TANK SEAL	1.46

MODEL No.

F5914-900
F5915-100
F5915-900
F5917-900
F5918-900
FH50045
FH50046



SteamVac

SpinScrub
The Multiple Brush System only from Hoover



SteamVac
with
CLEAN
SURGE™

15

PART LISTING / PRICE LIST

ITEM	PART NUMBER	MODELS TO FIT	PART DESCRIPTION	LIST COST
45	43526018	ALL	RESERVOIR REGULATOR - MAGNSM GRAY	8.93
	304046001	ALL	RESERVOIR REGULATOR - SHADOW GRAY	PEND
46	40309002	ALL	TUBING	3.73
48	40201245	ALL	HANDLE HARDWARE ASSEMBLY 2 SCREWS 4-1/8" - 3 NUTS	2.94
49	34113004	ALL	MOTOR SEAL	1.12
50		ALL	SCREW	N.A.
51	012227--	ALL	TERMINALS	.79
52	46583125	ALL	POWER CORD - 21' BLACK	14.60
53	38781048	ALL	MOTOR BASE SEAL	2.59
54	36131125	ALL	TRUNNION COVER - LEFT MAGNSM GRAY	.93
	522193002	ALL	TRUNNION COVER - LEFT SHADOW GRAY	PEND
55	38434025	ALL	SWITCH ACTUATOR LEVER - BLACK	3.39
	522203001	ALL	SWITCH ACTUATOR LEVER - SATIN SILVER	PEND
56	28218061	ALL	SWITCH	2.80
57	90001281	ALL	CORD RETAINER - BLACK	.85
58	42274005	F5914900	NOZZLE BASE ASSEMBLY	21.54
	37272117	F5915100, F5915900, F5917900, F5918900, FH50045, FH50046	NOZZLE BASE ASSEMBLY - MAGNESIUM GRAY	18.48
	522197001	ALL	NOZZLE BASE ASSEMBLY - SHADOW GRAY	PEND
59	37276022	F5914900	HANDLE COVER - DESERT SAND	10.20
	37276037	F5915100, F5915900, F5917900, F5918900, FH50045, FH50046	HANDLE COVER - MAGNESIUM GRAY	PEND
	522200001	ALL	HANDLE COVER - SHADOW GRAY	PEND
60	39466114	ALL	LOWER HANDLE ASSEMBLY - MAGNSM GRAY	47.04
	522211001	ALL	LOWER HANDLE ASSEMBLY - SHADOW GRAY	PEND
61	36433234	ALL	LOWER TOOL HOLDER - MAGNESIUM GRAY	3.42
62	21447041	ALL	SCREW	.58
63	38613040	ALL	STAIR / UPHOLSTERY TOOL WITH BRUSH	9.30
64	36433219	ALL	UPPER HOSE HOLDER - MAGNESIUM GRAY	2.22
	522196001	ALL	UPPER HOSE HOLDER - SHADOW GRAY	PEND

MODEL No.

F5914-900
F5915-100
F5915-900
F5917-900
F5918-900
FH50045
FH50046



SteamVac

SpinScrub
The Multiple Brush System only from Hoover



SteamVac
WITH
CLEAN SURGE

15

PART LISTING / PRICE LIST

MODEL No.

F5914-900
F5915-100
F5915-900
F5917-900
F5918-900
FH50045
FH50046

ITEM	PART NUMBER	MODELS TO FIT	PART DESCRIPTION	LIST COST
65	90001351	F5914900	COMPLETE HOSE ASSEMBLY - MAGNM GRAY	41.99
	43491075	F5915100, F5915900, F5917900, F5918900, FH50045, FH50046	COMPLETE HOSE ASSEMBLY - MAGNESIUM GRAY	41.09
	304042002	F5915100, F5915900, F5917900, FH50045	COMPLETE HOSE ASSEMBLY - BLACK	PEND
67	43513010	ALL	CONNECTOR COUPLER	3.73
68	48445003	ALL	BRUSH BLOCK ASSEMBLY - HOSE TOOL	1.54
69	37276011	F5915100, F5915900, F5917900, FH50045, FH50046	TOOL COVER - TRANSPARENT	4.86
	37276033	F5914900, F5918900	TOOL COVER - TRANSPARENT	5.66
70	39466113	ALL	UPPER HANDLE - MAGNESIUM GRAY	27.54
	522212001	ALL	UPPER HANDLE - SHADOW GRAY	PEND
71	39442043	F5914900	CORD WRAP - DARK CHARCOAL GRAY	2.03
	39442056	F5915100	CORD WRAP - SHADOW GRAY	.66
	39442048	F5915900, F5917900, F5918900, FH50045, FH50046	CORD WRAP - MAGNESIUM GRAY	1.14
72	38458056	ALL	CONTROL ROD - UPPER	3.73
73	38434029	ALL	CONTROL LEVER - BLACK	2.03
	502204001	ALL	CONTROL LEVER - SATIN SILVER	PEND
74	39458007	F5914900	UPPER HANDLE LEVER GUARD - SAND	6.79
	39458060	F5915100, F5915900, F5917900, F5918900, FH50045, FH50046	UPPER HANDLE LEVER GUARD - MAGNESIUM GRAY	2.66
	522210001	ALL	UPPER HANDLE LEVER GUARD - SHADOW GRAY	PEND
75	21447255	ALL	SCREW - SELF TAPPING	1.12
76	37276035	ALL	SOLUTION TUBE COVER - MAGNSM GRAY	.70
	522199001	ALL	SOLUTION TUBE COVER - SHADOW GRAY	PEND
77	38458033	ALL	CONTROL ROD - LOWER	1.46
78	38458055	ALL	CONTROL ROD - UPPER BACK	3.73
79	38433079	ALL	SOLUTION BUTTON - BLACK	1.12
	522201001	ALL	SOLUTION BUTTON - SATIN SILVER	PEND
80	51639165	ALL	LABEL - CLEAN SURGE	5.09
81	36132004	ALL	TUBING RETAINER	1.12
82	38769028	ALL	EXHAUST DUCT - BLACK	2.59



SteamVac

SpinScrub
The Multiple Brush System only from Hoover



SteamVac™
WITH
CLEAN
SURGE™

15

PART LISTING / PRICE LIST

ITEM	PART NUMBER	MODELS TO FIT	PART DESCRIPTION	LIST COST
83	38719027	ALL	FLOAT RETAINER	2.59
84	43538001	ALL	FLOAT ASSEMBLY - BRITE YELLOW	3.73
85	38784070	ALL	FLOAT RETAINER SEAL	2.59
86	38433074	ALL	TRIGGER - BLACK	1.12
87	37276006	ALL	WAND COVER - DESERT SAND	1.12
88	21447239	ALL	SCREW	.57
89	43513024	ALL	WAND VALVE ASSEMBLY - LARGER NIPPLE	1.69
90	38312019	ALL	SPRING	1.12
91	43412007	ALL	NOZZLE/VALVE ASSEMBLY	4.53
92	42272134	ALL	SOLUTION TANK WITH CAP	34.01
93	38777106	ALL	RECOVERY TANK WITH DUCT ONLY REVISED	15.25
94	39514003	ALL	NOZZLE CLEAN OUT TOOL	.54
95	48417008	ALL	BARE FLOOR TOOL ASSEMBLY	2.92
	51638055	ALL	LABEL - HANDLE RELEASE	.89
	51639124	F5914900	LABEL - DOOR	1.12
	51639196	F5915100, F5915900, F5917900, F5918900, FH50045, FH50046	LABEL - DOOR	.07
	51855030	F5914900	LABEL - SPEED ACTUATOR	4.01
	51639192	F5915100, F5915900, F5917900, F5918900, FH50045, FH50046	LABEL - BRUSH SPEED	2.26
	51865024	ALL	LABEL - ON/OFF	.89

MODEL No.

F5914-900
F5915-100
F5915-900
F5917-900
F5918-900
FH50045
FH50046



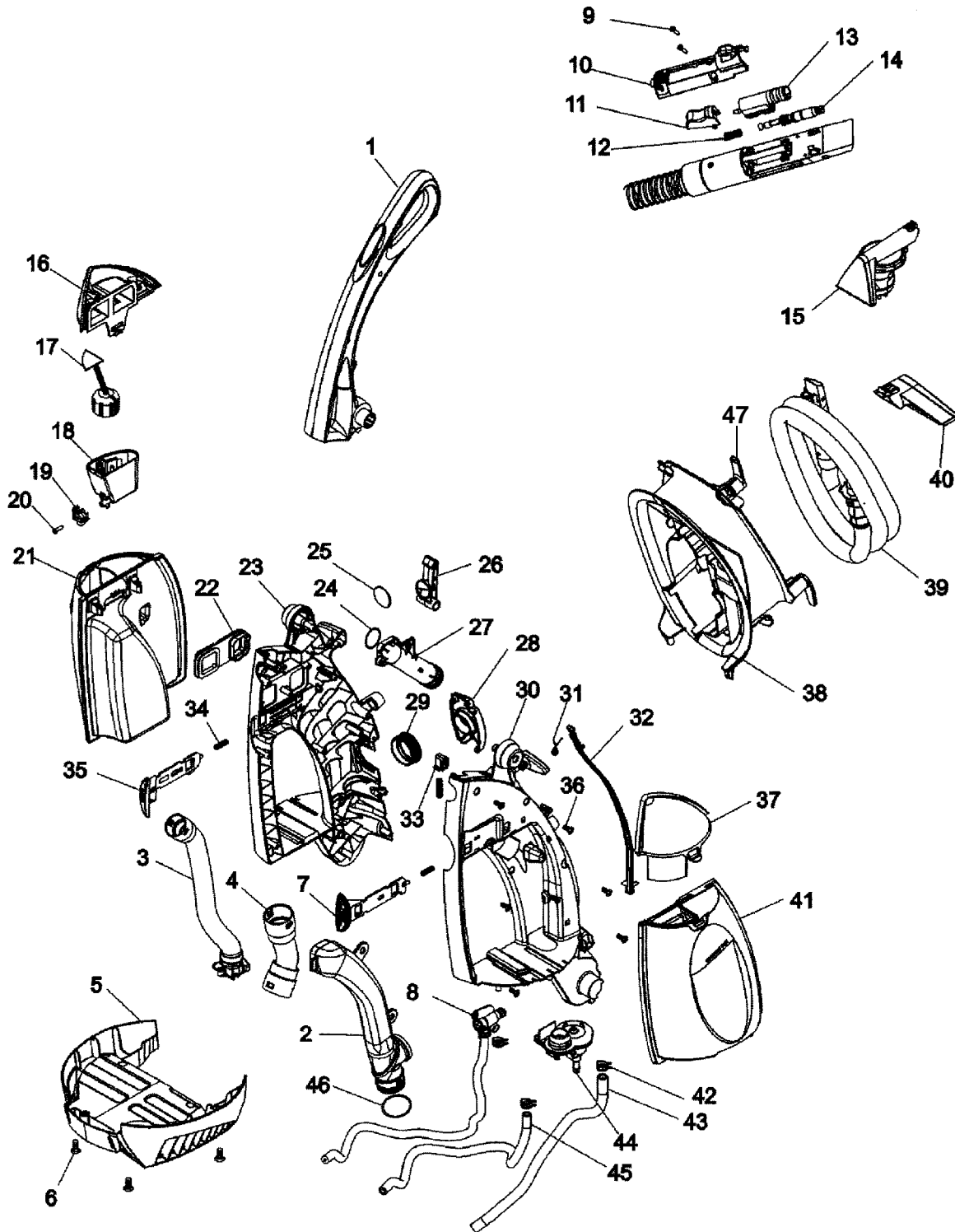
SteamVac™
agility™

15

ASSEMBLY SCHEMATIC

MODEL No.

F6207-900
F6212-900
F6215-900





SteamVac™
agility™

15

PART LISTING / PRICE LIST

MODEL No.

F6207-900
F6212-900
F6215-900

ITEM	PART NUMBER	MODELS TO FIT	PART DESCRIPTION	LIST COST
1	90001045	F6212-900, F6215-900	UPPER HANDLE ASSEMBY	21.54
	39466096	F6207-900	UPPER HANDLE ASSEMBY	19.74
2	90001110	ALL	SOLUTION DUCT	3.96
3	90001079	ALL	AIR HOSE COMPLETE	11.33
4	90001080	ALL	RECOVERY HOSE COMPLETE	11.33
5	90001069	ALL	LOWER HANDLE COVER	11.33
6	21447003	ALL	SCREW	.57
7	90001054	ALL	SOLUTION TANK RELEASE LATCH	2.59
8	90001095	ALL	QUICK DISCONNECT ASSEMBLY	5.84
9	21447239	ALL	SCREW	.57
10	92001002	F6212-900, F6215-900	WAND COVER	1.12
	37276006	F6207-900	WAND COVER	1.12
11	38433074	ALL	TRIGGER	1.12
12	38312019	ALL	SPRING	1.12
13	91001059	ALL	WAND VALVE ASSEMBLY - SMALL NIPPLE	1.69
14	43412007	ALL	NOZZLE / VALVE ASSEMBLY	4.53
15	91001003	ALL	TURBINE NOZZLE	34.01
	48434006	ALL	BRUSH ASSEMBLY - TURBINE	6.79
	38613038	ALL	NOZZLE BODY - TURBINE	15.70
16	90001282	F6212-900	RECOVERY LID COVER ASSEMBLY - SURF BLUE TRANSLUCENT	15.87
	90001089	F6215-900	RECOVERY LID COVER ASSEMBLY - LAVENDAR MIST ORDER 37274112	N.L.A.
	37274112	F6207-900	RECOVERY LID COVER ASSEMBLY - FROST TRANSLUCENT MEDIUM	15.87
17	90001041	ALL	FLOAT	2.26
18	90001040	ALL	SEPARATOR CHANNEL	4.53
19	90001042	ALL	FLOAT GLIDE	2.59
20		ALL	SCREW - SELF TAPPING	N.A.
21	90001038	F6212-900	RECOVERY TANK COMPLETE ORDER 42272169	N.L.A.
	42272169	F6215-900	RECOVERY TANK COMPLETE - LAVENDER	33.64
	42272175	F6207-900	RECOVERY TANK COMPLETE - FROST ORDER 42272169	N.L.A.
22	38783034	ALL	SEAL	1.05
23	90001049	ALL	LOWER HANDLE ASSEMBLY - RIGHT	28.34
24	90001103	ALL	O-RING HOSE ENDS	.74



SteamVac™
agility™

15

PART LISTING / PRICE LIST

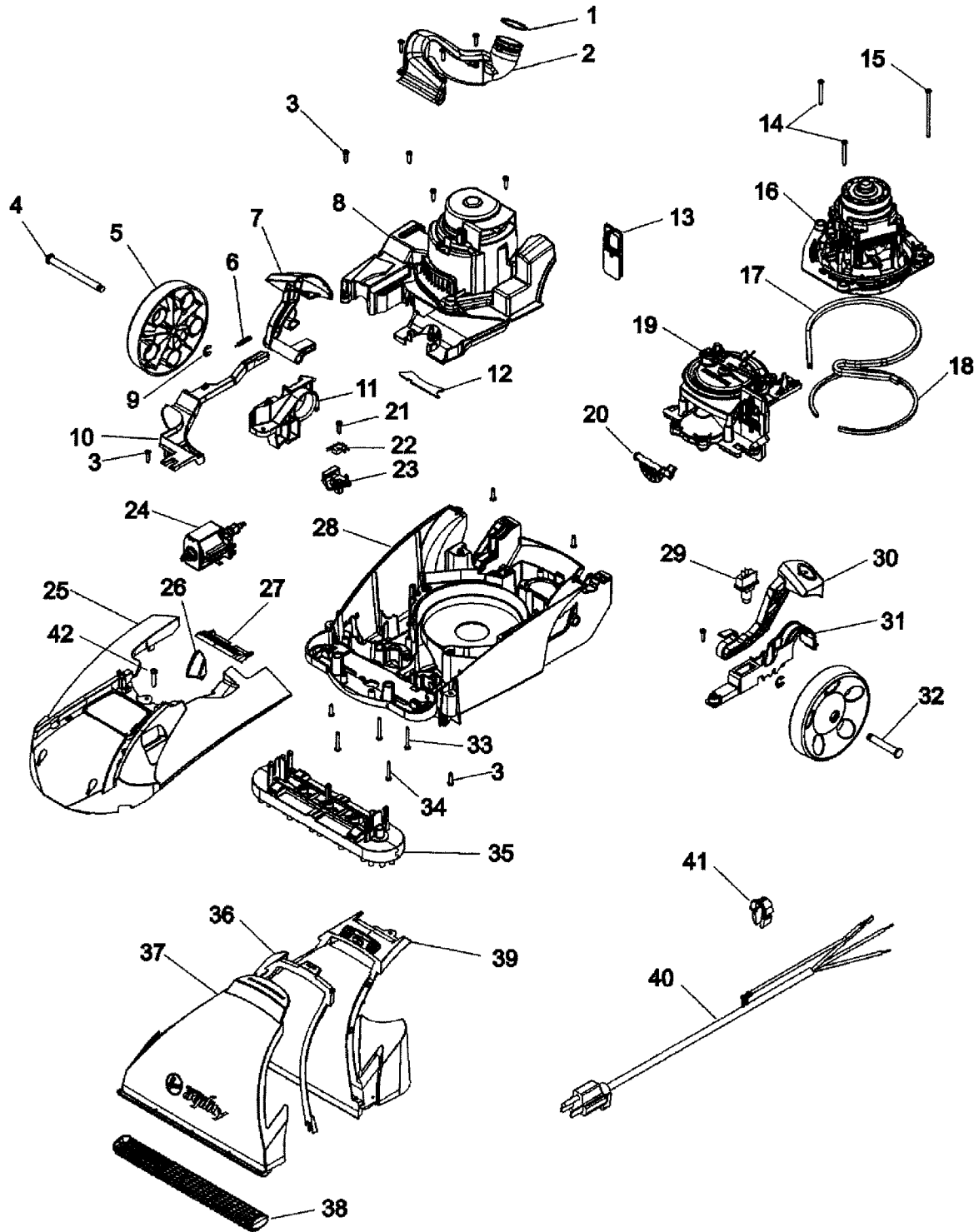
MODEL No.

F6207-900
F6212-900
F6215-900

ITEM	PART NUMBER	MODELS TO FIT	PART DESCRIPTION	LIST COST
25	51661020	ALL	MEDALLION	1.46
26	36151052	ALL	LATCH UPPER HANDLE	2.26
27	90001077	ALL	AIR RETURN ELBOW	N.A.
28	90001071	ALL	DOOR - TOOL PORT	3.39
29	90001078	ALL	SEAL - TOOL PORT	3.39
30	39466085	ALL	LOWER HANDLE ASSEMBLY - LEFT	21.49
31	90001048	ALL	SPRING	1.12
32	90001053	ALL	CONTROL ROD - LOWER	1.81
33	90001072	ALL	TOLERANCE SPACER	N.L.A.
34	90001037	ALL	SPRING	1.12
35	90001051	ALL	RECOVERY TANK RELEASE HANDLE	2.59
36	21447003	ALL	SCREW	.57
37	90001283	F6212-900	LID COVER - SOLUTION TANK	11.33
	37274078	F6215-900	LID COVER - SOLUTION TANK	15.87
	37274111	F6207-900	LID COVER - SOLUTION TANK	8.93
38	36433193	ALL	TOOL CADDY	14.07
39	91001008	ALL	CLEANING TOOL HOSE	29.47
40	38613040	ALL	STAIR / UPHOLSTERY TOOL WITH BRUSH	9.30
41	90001284	F6212-900	SOLUTION TANK ASSEMBLY - SURF BLUE	28.34
	90001091	F6215-900	SOLUTION TANK ASSEMBLY - LAVENDER	28.34
	38777104	F6207-900	SOLUTION TANK ASSEMBLY - FROST	28.34
	90001259	ALL	SPRING VALVE	.57
	38784086	ALL	VALVE SEAL	.74
	90001261	ALL	VALVE STEM	.85
42	25411015	ALL	HOSE CLAMP	1.12
43	90001075	ALL	TUBING	1.12
44	90001073	ALL	RESERVOIR - WELDED	11.33
45	90001076	ALL	TUBING	N.L.A.
46	90001103	ALL	O-RING HOSE END	.74
47	39442048	F6212-900, F6215-900	CORD WRAP - MAGNESIUM GRAY	1.14
	91001153	F6207-900	CORD WRAP	1.12



ASSEMBLY SCHEMATIC



MODEL NO.

F6207-900
F6212-900
F6215-900



SteamVac™
agility™

15

PART LISTING / PRICE LIST

MODEL No.

F6207-900
F6212-900
F6215-900

ITEM	PART NUMBER	MODELS TO FIT	PART DESCRIPTION	LIST COST
1	90001103	ALL	O-RING HOSE ENDS	.74
2	90001104	ALL	RECOVERY DUCT	4.53
	21447242	ALL	SCREW - SELF TAPPING	1.12
3	21447003	ALL	SCREW	.57
4	90001107	ALL	REAR WHEEL AXLE - RIGHT	1.69
5	38522089	ALL	REAR WHEEL	2.26
6	38331006	ALL	SPRING - TURBINE	1.12
7	90001064	ALL	HANDLE RELEASE PEDAL	4.53
8	90001061	ALL	MOTOR COVER	12.23
9	160017--	ALL	LOCK RING	.58
10	38458074	ALL	ACTUATOR ARM - TURBINE	2.86
11	90001067	ALL	TRUNNION COVER - RIGHT	2.26
12	90001111	ALL	MOTOR COVER SEAL	.57
13	43613018	ALL	FILTER AND SCREEN ASSEMBLY	4.19
14	21447232	ALL	SCREW - SELF TAPPING	.57
15	21447246	ALL	SCREW - 3.125"	1.12
16	27212077	F6212-900, F6215-900	MOTOR ASSEMBLY	64.73
	27212074	F6207-900	MOTOR ASSEMBLY	56.39
17	38781048	ALL	MOTOR BASE SEAL	2.59
18	34113004	ALL	MOTOR SEAL	1.12
19	43191010	ALL	TURBINE AND GEAR ASSEMBLY	34.01
	91001075	ALL	BEARING - TURBINE	1.69
20	90001068	ALL	VALVE DOOR	2.26
21	21447003	ALL	SCREW	.57
22	90001112	ALL	SWITCH	3.96
23	90001062	ALL	SWITCH BRACKET	1.12
24	90001105	ALL	PUMP ASSEMBLY	26.64
25	90001035	F6212-900	HOOD ASSEMBLY - SURF BLUE	31.71
	90001085	F6215-900	HOOD ASSEMBLY - LAVENDER MIST	29.47
	37271144	F6207-900	HOOD ASSEMBLY - GRAY	14.73
26	38421114	ALL	INDICATOR KNOB	.53
27	90001059	ALL	SEAL RECOVERY DUCT	4.29
28	37272105	ALL	MAIN BODY ASSEMBLY	31.74
29	28218061	ALL	SWITCH	2.80
30	38434036	ALL	SWITCH ACTUATION PEDAL	4.53



SteamVac™
agility™

15

PART LISTING / PRICE LIST

MODEL No.

F6207-900
F6212-900
F6215-900

ITEM	PART NUMBER	MODELS TO FIT	PART DESCRIPTION	LIST COST
31	90001066	ALL	TRUNNION COVER - LEFT	2.26
32	90001108	ALL	REAR WHEEL AXLE - LEFT	1.13
33	21479438	ALL	SCREW	1.12
34	21447236	ALL	SCREW	1.12
35	48437029	ALL	BRUSH BLOCK - 5 BRUSH	26.07
36	90001058	ALL	NOZZLE SEAL	6.79
37	37275069	F6212-900, F6215-900	FRONT PLATE - NOZZLE - CLEAR	20.02
	37275063	F6207-900	FRONT PLATE - NOZZLE - CLEAR	11.33
38	91001007	ALL	BARE FLOOR TOOL - FOAM	N.L.A.
39	90001057	F6212-900, F6215-900	BACK PLATE - NOZZLE	20.40
	37275064	F6207-900	BACK PLATE - NOZZLE	14.16
40	90001109	ALL	POWER CORD	17.00
41	90001281	ALL	CORD RETAINER	.85
	27479307	ALL	CABLE TIE	.45



**STEAM VAC™
DUAL V™
STEAM VAC™
ALL TERRAIN**

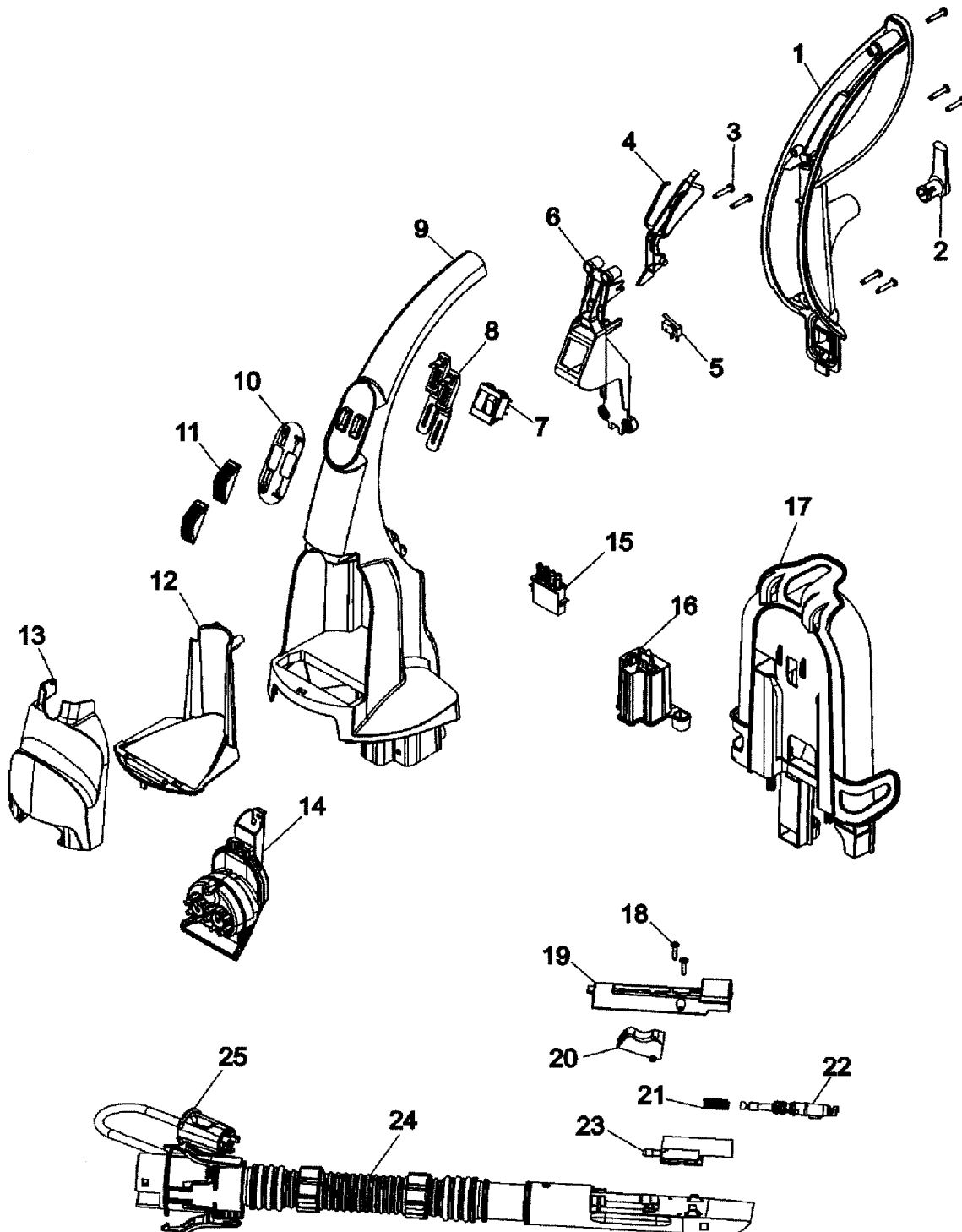
**MAX Extract™
DUAL V**

15

ASSEMBLY SCHEMATIC

MODEL No.

- F7222-900
- F7227-900
- F7411-900
- F7412-900
- F7428-900
- F7429-900
- F7450-100
- F7452-900
- FH50039
- FH50040
- FH50050





STEAM VAC™
DUAL V™
STEAM VAC™
ALL TERRAIN

MAX Extract
DUAL V

15

PART LISTING / PRICE LIST

ITEM	PART NUMBER	MODELS TO FIT	PART DESCRIPTION	LIST COST
1	92001302	F7222900, F7227900, F7428900, F7429900, F7450100, F7452900, FH50039, FH50040, FH50050	UPPER HANDLE - REAR	3.96
	39458011	F7411900, F7412900	UPPER HANDLE - REAR	5.66
	40201243	ALL	HANDLE HARDWARE ASSEMBLY	1.46
2	39442055	ALL	CORD WRAP - SANDSTONE GRAY	.88
3	21447072	ALL	SCREW	.57
4	38434030	ALL	CONTROL LEVER - BLACK	1.69
5	28218051	ALL	MICRO SWITCH	4.53
6	36436023	ALL	UPPER HANDLE SUPPORT	N.L.A.
7	28267003	ALL	SWITCH - DOUBLE ROCKER	5.66
8	38458065	ALL	SWITCH ROD - BLACK	1.12
9	39466118	F7222900, F7227900	UPPER HANDLE w/TOOL CADDY - FRONT SILVER SAND MEDIUM	11.33
	39466073	F7411900, F7412900	UPPER HANDLE w/TOOL CADDY - FRONT DARK CHARCOAL GRAY	14.70
	92001303	F7428900, F7450100, F7452900	UPPER HANDLE w/TOOL CADDY - FRONT SILVER SAND MEDIUM	11.33
	48663243	F7429900, FH50039, FH50040, FH50050	UPPER HANDLE w/o TOOL CADDY - FRONT	22.85
10	52313107	F7222900, F7227900, F7411900, F7412900, FH50039, FH50040, FH50050	LABEL - SWITCH / RINSE	2.26
	52313108	F7428900, F7429900, F7450100, F7452900	LABEL - SWITCH / AUTO RINSE	2.26
11	38421114	F7222900, F7227900, F7450100, FH50039, FH50040, FH50050	INDICATOR KNOB - TRNASPARENT LIGHT RED	.53
	38421122	F7411900, F7412900, F7428900, F7429900, F7450100, F7452900	SWITCH BUTTON - SANDSTONE GRAY	.88
12	36433227	F7222900, F7227900, F7411900, F7412900, F7428900, F7450100, FH50039, FH50040, FH50050	TOOL HOLDER	2.10

MODEL No.

F7222-900
 F7227-900
 F7411-900
 F7412-900
 F7428-900
 F7429-900
 F7450-100
 F7452-900
 FH50039
 FH50040
 FH50050



STEAM VAC™
DUAL V™
STEAM VAC™
ALL TERRAIN

MAX Extract
DUAL V

15

PART LISTING / PRICE LIST

ITEM	PART NUMBER	MODELS TO FIT	PART DESCRIPTION	LIST COST
13	37276039	F7222900, F7227900, F7411900, F7412900, F7428900, F7450100, F7452900	TOOL HOLDER COVER - CLEAR	3.22
	37276043	F7429900, FH50039, FH50040, FH50050	FRONT COVER	5.09
14	302598001	F7222900, F7227900, F7411900, F7412900, F7428900, F7450100, F7452900	TURBINE NOZZLE - LIME GREEN	32.07
	48437028	F7411900, F7412900, F7428900, F7450100, F7452900	SCRUB MODULE	9.80
	48437035	F7411900, F7412900	UPHOLSTERY MODULE	5.60
15	46658005	ALL	UPPER HANDLE WIRING HARNESS	14.73
16	37922014	ALL	WIRE COVER - SILVER SAND MEDIUM	1.89
17	92001281	F7222900, F7227900, F7428900, F7452900	TOOL CADDY - SANDSTONE GRAY	15.87
	36433167	F7411900, F7412900	TOOL CADDY - DESERT SAND	13.03
	36433243	F7429900, F7450100, FH50039, FH50040, FH50050	TOOL CADDY - SANDSTONE GRAY	13.03
18	21447239	ALL	SCREW	.57
19	37276038	F7222900, F7227900, F7428900, F7429900, F7450100, F7452900, FH50039, FH50040, FH50050	WAND COVER - SANDSTONE GRAY	N.A.
	37276006	F7411900, F7412900	WAND COVER - DESERT SAND	1.12
20	38433074	ALL	TRIGGER - BLACK	1.12
21	38312019	ALL	SPRING	1.12
22	43412007	ALL	NOZZLE AND VALVE ASSEMBLY	4.53
23	43513024	ALL	WAND VALVE ASSEMBLY - LARGER NIPPLE	1.69
24	43491086	ALL	HOSE ASSEMBLY - SANDSTONE GRAY	26.64
25	43513010	ALL	CONNECTOR COUPLER	3.73

MODEL No.

F7222-900
 F7227-900
 F7411-900
 F7412-900
 F7428-900
 F7429-900
 F7450-100
 F7452-900
 FH50039
 FH50040
 FH50050



STEAM VAC™
DUAL V™
STEAM VAC™
ALL TERRAIN

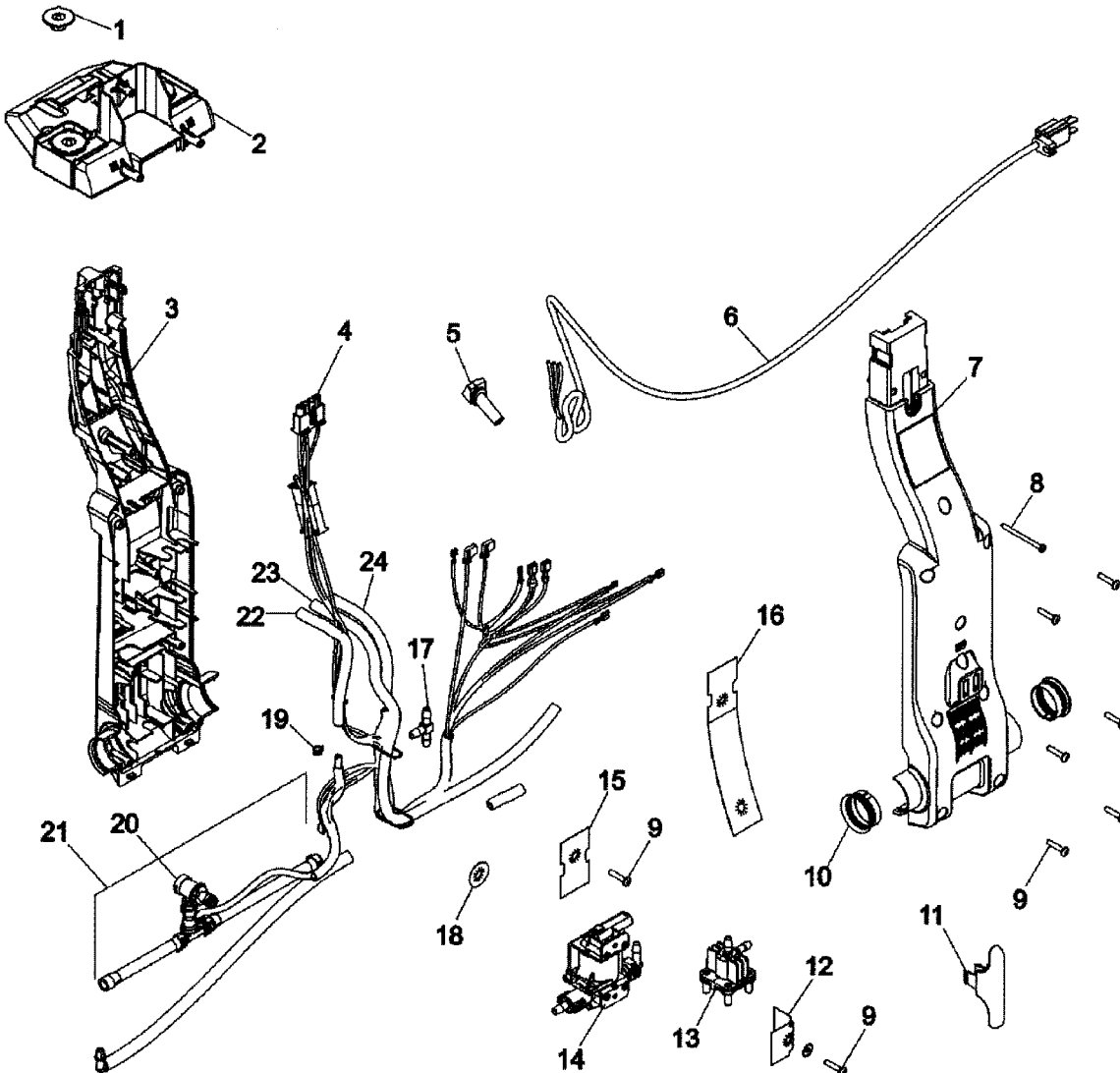
MAX Extract
DUAL V

15

ASSEMBLY SCHEMATIC

MODEL NO.

- F7222-900
- F7227-900
- F7411-900
- F7412-900
- F7428-900
- F7429-900
- F7450-100
- F7452-900
- FH50039
- FH50040
- FH50050





STEAM VAC™
DUAL V™
STEAM VAC™
ALL TERRAIN

MAX Extract
DUAL V

15

PART LISTING / PRICE LIST

ITEM	PART NUMBER	MODELS TO FIT	PART DESCRIPTION	LIST COST
1	38764042	F7222900, F7227900, F7411900, F7412900, F7428900, F7429900, F7450100, FH50039, FH50040, FH50050	METERING PLATE - SANDSTONE GRAY	2.26
	92001310	F7452900	METERING PLATE - SILVER SAND MEDIUM	2.26
2	41423024	F7222900, F7227900, F7428900, F7429900, F7450100, F7452900, FH50039, FH50040, FH50050	TANK SUPPORT ASSEMBLY	11.33
	41423021	F7411900, F7412900	TANK SUPPORT ASSEMBLY	22.67
3	39466116	ALL	LOWER HANDLE - FRONT SILVER SAND	5.09
4	46658003	F7222900, F7227900, F7411900, F7412900, FH50039, FH50040, FH50050	WIRING HARNESS ASSEMBLY	17.00
	46658004	F7428900, F7429900, F7450100, F7452900	WIRING HARNESS ASSEMBLY	27.21
5	36215028	ALL	CORD PROTECTOR - BLACK	1.81
6	91001198	ALL	POWER CORD ASSEMBLY - BLACK	18.70
	46583125	F7411900, F7412900	POWER CORD - 21'	14.60
7	92001302	F7222900, F7227900, F7428900, F7429900, F7450100, F7452900	LOWER HANDLE - REAR SANDSTONE GRAY	3.96
	91001098	F7411900, F7412900	LOWER HANDLE - REAR DARK CHARCOAL GRAY	N.A.
	39466117	FH50039, FH50040, FH50050	LOWER HANDLE - REAR SILVER SAND MEDIUM	9.45
8	21447019	ALL	SCREW	.57
9	21447269	ALL	SCREW	.57
10	32456001	ALL	TRUNNON SLEEVE	1.12
11	36433228	F7222900, F7227900, F7428900, F7429900, F7450100, F7452900, FH50039, FH50040, FH50050	CORD HOOK - HOSE MAGNESIUM GRAY	1.12
	36433228	F7411900, F7412900	CORD HOOK - HOSE DARK CHARCOAL GRAY	1.12
12	34264006	ALL	INSULATOR	1.12
13	43513013	ALL	PRESSURE VALVE ASSEMBLY	11.33
14	43582011	ALL	PUMP ASSEMBLY - SOLENOID	27.21
15	34264006	ALL	INSULATOR	1.12

MODEL No.

F7222-900
 F7227-900
 F7411-900
 F7412-900
 F7428-900
 F7429-900
 F7450-100
 F7452-900
 FH50039
 FH50040
 FH50050



STEAM VAC™
DUAL V™
STEAM VAC™
ALL TERRAIN

MAX Extract
DUAL V

15

PART LISTING / PRICE LIST

ITEM	PART NUMBER	MODELS TO FIT	PART DESCRIPTION	LIST COST
16	34285001	ALL	INSULATOR	1.12
17	38681010	ALL	T CONNECTOR	1.12
18	34264007	ALL	INSULATOR - LOWER	1.12
19	25411015	ALL	HOSE CLAMP	1.12
20	43523004	ALL	QUICK DISCONNECT ASSEMBLY	5.24
21	43491046	ALL	QUICK DISCONNECT TUBING	17.00
22	90001101	ALL	TUBING - 6.75" LONG	1.13
23	66173013	ALL	TUBING - 22.25" LONG	2.59
24	90001101	ALL	TUBING - 6.75" LONG	1.13

MODEL No.

F7222-900
 F7227-900
 F7411-900
 F7412-900
 F7428-900
 F7429-900
 F7450-100
 F7452-900
 FH50039
 FH50040
 FH50050

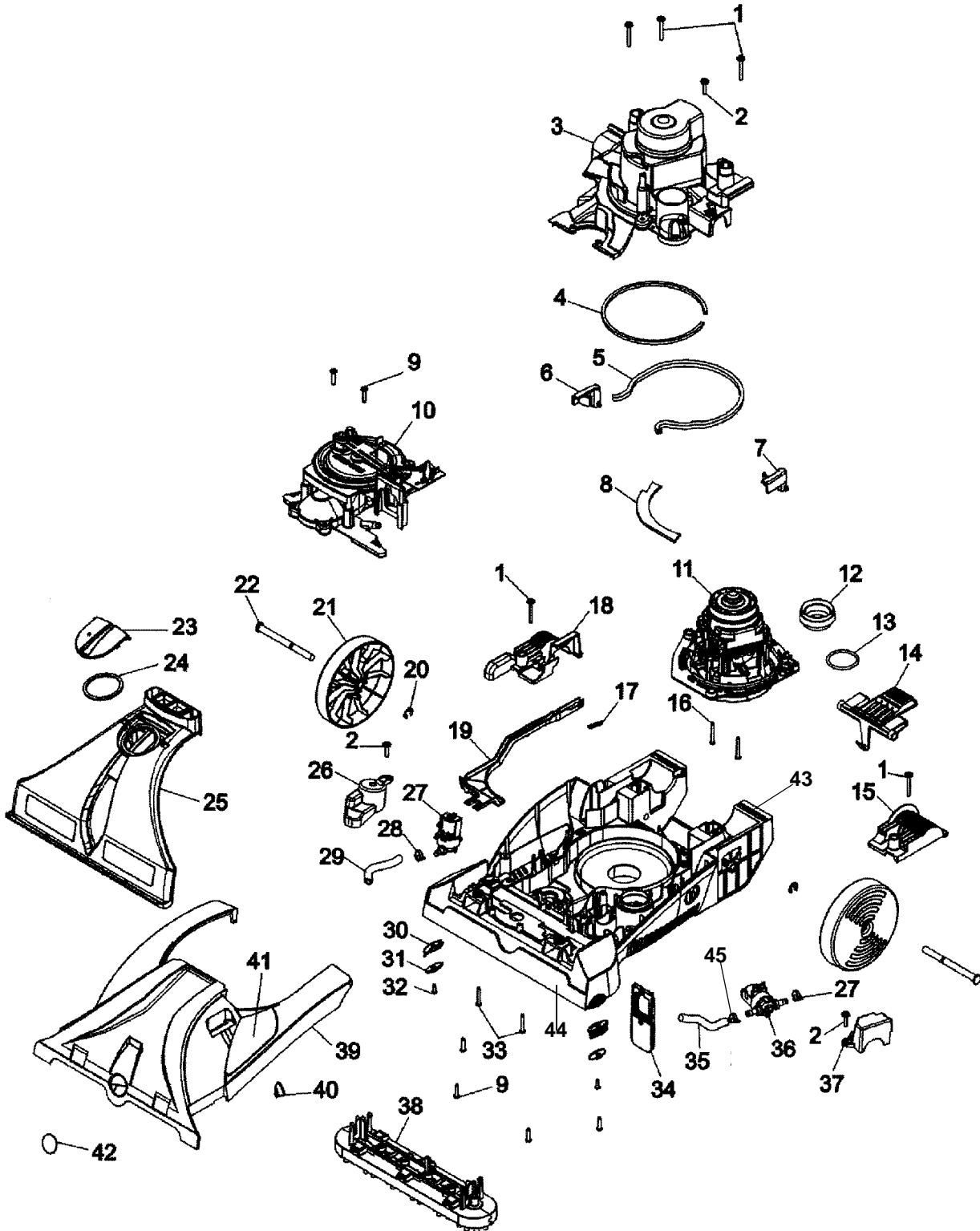


**STEAM VAC™
DUAL V™
STEAM VAC™
ALL TERRAIN**

**MAX Extract™
DUAL V**

15

ASSEMBLY SCHEMATIC



MODEL No.

- F7222-900
- F7227-900
- F7411-900
- F7412-900
- F7428-900
- F7429-900
- F7450-100
- F7452-900
- FH50039
- FH50040
- FH50050



STEAM VAC™
DUAL V™
STEAM VAC™
ALL TERRAIN

MAX Extract
DUAL V

15

PART LISTING / PRICE LIST

ITEM	PART NUMBER	MODELS TO FIT	PART DESCRIPTION	LIST COST
1	23149004	ALL	TAPPING SCREW WITH WASHER	.40
2	23149002	ALL	SCREW - SELF TAPPING	.57
3	37196196	F7222900, F7227900, FH50039, FH50040, FH50050	MOTOR COVER - SILVER SAND MEDIUM	8.80
	37196194	F7411900, F7412900, F7428900, F7429900, F7450100	MOTOR COVER - SILVER SAND MEDIUM	9.08
		F7452900	MOTOR COVER	N.A.
4	34113004	ALL	MOTOR SEAL	1.12
5	38781067	ALL	BASE MOTOR SEAL	2.26
6	36153097	ALL	DIRTY WATER TANK LATCH - LEFT BLACK	.87
7	36153098	ALL	DIRTY WATER TANK LATCH - RIGHT BLACK	.87
8	38781074	ALL	INNER SEAL	1.12
9	21447217	ALL	SCREW - SELF TAPPING	1.12
10	43191009	F7222900	TURBINE AND GEAR ASSEMBLY - 5 BRUSH MODELS PRIOR TO 12/02 KEEP CAP ON MODELS 12/02 AND AFTER REMOVE CAP ONE PORT ASSEMBLY	41.95
	43191011	F7222900, F7227900, FH50039, FH50040, FH50050	TURBINE AND GEAR ASSEMBLY - 5 BRUSH MODELS PRIOR TO 12/02 KEEP CAP ON MODELS 12/02 AND AFTER REMOVE CAP TWO PORT ASSEMBLY	27.67
	43191018	F7411900, F7412900, F7428900, F7429900, F7450100, F7452900	TURBINE AND GEAR ASSEMBLY - 6 BRUSH	29.75
11	27212077	F7222900, F7227900, F7411900, F7412900, F7452900	MOTOR ASSEMBLY	64.73
	27212074	F7428900, F7429900, F7450100, FH50039, FH50040, FH50050	MOTOR ASSEMBLY	56.39
12	38784063	ALL	STANDPIPE SEAL	3.39
13	25156522	F7222900, FH50039, FH50040, FH50050	O-RING	1.12
	25156524	F7227900, F7428900, F7429900, F7450100	O-RING	.58
	25156521	F7411900, F7412900, F7452900	O-RING	1.12

MODEL No.

F7222-900
 F7227-900
 F7411-900
 F7412-900
 F7428-900
 F7429-900
 F7450-100
 F7452-900
 FH50039
 FH50040
 FH50050



STEAM VAC™
DUAL V™
STEAM VAC™
ALL TERRAIN

MAX Extract
DUAL V

15

PART LISTING / PRICE LIST

ITEM	PART NUMBER	MODELS TO FIT	PART DESCRIPTION	LIST COST
14	38434045	F7222900, F7227900, F7428900, F7429900, F7450100, F7452900, FH50039, FH50040, FH50050	HANDLE RELEASE PEDAL - SANDSTONE GRAY	4.76
	38434035	F7411900, F7412900	HANDLE RELEASE PEDAL - DEEP SAND	3.39
15	36131151	F7222900, F7227900, FH50039, FH50040, FH50050	TRUNNION BRACKET - LEFT SILVER SAND MEDIUM	.88
	91001084	F7411900, F7412900	TRUNNION BRACKET - LEFT DARK CHARCOAL GRAY	1.46
	36131145	F7428900, F7429900, F7450100, F7452900	TRUNNION BRACKET - LEFT SILVER SAND MEDIUM	1.46
16	21479438	ALL	SCREW	1.12
17	38331006	ALL	SPRING - TURBINE ACTUATOR	1.12
18	36131152	F7222900, F7227900, FH50039, FH50040, FH50050	TRUNNION BRACKET - RIGHT SILVER SAND MEDIUM	1.12
	36131146	F7411900, F7412900, F7428900, F7429900, F7450100	TRUNNION BRACKET - RIGHT SILVER SAND MEDIUM	1.59
		F7452900	TRUNNION BRACKET - RIGHT	N.A.
19	38458066	ALL	ACTUATOR ARM - TURBINE	2.59
20	160017--	ALL	LOCK RING	.58
21	38522099	F7222900, F7227900, F7428900, F7429900, F7450100, FH50039, FH50040, FH50050	REAR WHEEL - SILVER SAND MEDIUM	2.11
	38522083	F7411900, F7412900	REAR WHEEL - DARK CHARCOAL GRAY	2.82
	303611001	F7452900	REAR WHEEL	4.53
22	32434013NC	F7222900, F7227900, FH50039, FH50040, FH50050	REAR AXLE	PENDING
	32436004	F7411900, F7412900, F7428900, F7429900, F7450100, F7452900	REAR AXLE	1.75
23	92001325	F7222900, F7227900, F7428900, F7429900, F7450100, F7452900, FH50039, FH50040, FH50050	TOOL PORT DOOR - CLEAR	1.46
	91001091	F7411900, F7412900	TOOL PORT DOOR - QUARTZ TRANSPARENT LIGHT	1.12

MODEL No.

F7222-900
 F7227-900
 F7411-900
 F7412-900
 F7428-900
 F7429-900
 F7450-100
 F7452-900
 FH50039
 FH50040
 FH50050



**STEAM VAC™
DUAL V™
STEAM VAC™
ALL TERRAIN**

**MAX Extract
DUAL V**

15

PART LISTING / PRICE LIST

ITEM	PART NUMBER	MODELS TO FIT	PART DESCRIPTION	LIST COST
24	38784091	ALL	TOOL PORT DOOR SEAL	1.46
25	43411019	F7222900, F7227900, FH50039, FH50040, FH50050	NOZZLE ASSEMBLY - 5 BRUSH	26.31
	43411020	F7411900, F7412900, F7428900, F7429900, F7450100, F7452900	NOZZLE ASSEMBLY - 6 BRUSH	31.30
26	37278014	F7222900, F7227900, F7428900, F7429900, F7450100, FH50039, FH50040, FH50050	SOLENOID COVER - RIGHT SILVER SAND MEDIUM	.83
	37278013	F7411900, F7412900, F7452900	SOLENOID COVER - RIGHT DARK CHARCOAL GRAY	1.12
27	25686057	ALL	SOLENOID VALVE - GRAVITY	11.33
28	25411015	ALL	HOSE CLAMP	1.12
29	90001101	ALL	TUBING - 6.75" LONG	1.13
30	39511014	ALL	GROOMERS - LIME GREEN	.56
31	36131144	ALL	GROOMERS PLATE - SANDSTONE GRAY	.89
32	21447217	ALL	SCREW - SELF TAPPING	1.12
33	21447268	ALL	SCREW	N.L.A.
34	43613018	ALL	FILTER AND SCREEN ASSEMBLY	4.19
	90001294	ALL	TANK SCREEN	3.39
35	90001101	ALL	TUBING - 6.75" LONG	1.13
36	25686056	ALL	SOLENOID VALVE - PRESSURE	11.33
37	37278015	F7222900, F7227900, F7428900, F7429900, F7450100, FH50039, FH50040, FH50050	SOLENOID COVER - LEFT SILVER SAND MEDIUM	N.A.
	91001093	F7411900, F7412900, F7452900	SOLENOID COVER - LEFT DARK CHARCOAL GRAY	N.A.
38	48437029	F7222900, F7227900, FH50039, FH50040, FH50050	BRUSH BLOCK - 5 BRUSH	26.07
	48437030	F7411900, F7412900, F7428900, F7429900, F7450100, F7452900	BRUSH BLOCK - 6 BRUSH	27.21
	48437034	F7428900, F7452900	BRUSH BLOCK - BARE FLOOR - 6 BRUSH	31.17
	48417006	F7411900, F7412900, F7428900, F7429900	BARE FLOOR TOOL - 6 BRUSH	9.06
	92001262	F7411900, F7412900, F7428900, F7429900, F7450100, F7452900	HARD FLOOR SQUEEGEE	6.79

MODEL No.

F7222-900
F7227-900
F7411-900
F7412-900
F7428-900
F7429-900
F7450-100
F7452-900
FH50039
FH50040
FH50050



STEAM VAC™
DUAL V™
STEAM VAC™
ALL TERRAIN

MAX Extract
DUAL V

15

PART LISTING / PRICE LIST

ITEM	PART NUMBER	MODELS TO FIT	PART DESCRIPTION	LIST COST
39	37271138	F7222900	HOOD / NOZZLE COVER - BRITE CRIMSON	17.00
	37271105	F7227900	HOOD / NOZZLE COVER - PEWTER METALLIC	N.L.A.
	37271130	F7411900	HOOD / NOZZLE COVER - PLUM	N.A.
	37271139	F7412900, F7428900	HOOD / NOZZLE COVER - BLACK	12.11
	37271166	F7429900	HOOD / NOZZLE COVER - EARTH GREEN	N.A.
	522261001	F7450100	HOOD / NOZZLE COVER - GARNET METALLIC	PEND
	92001328	F7452900	HOOD / NOZZLE COVER - PATRIOT BLUE	14.46
	37271092	FH50039, FH50040, FH50050	HOOD / NOZZLE COVER - BLACK	31.74
40	38421114	ALL	INDICATOR KNOB - TRANSPARENT LIGHT RED	.53
41	51865029	F7222900, F7227900, FH50039, FH50040, FH50050	LABEL - BRUSH SPEED	.89
	51865037	F7411900, F7412900, F7429900, F7450100	LABEL - BRUSH SPEED	N.A.
	51865036	F7428900 F7452900	LABEL - BRUSH	.89
42	51661020	ALL	MEDALLION	1.46
43	37272126	F7222900, F7227900	BODY / NOZZLE BASE - 5 BRUSH	23.80
	37272131	FH50039, FH50040, FH50050	BODY / NOZZLE BASE - 5 BRUSH	23.80
	37272132	F7450100	BODY / NOZZLE BASE - 6 BRUSH	PEND
	37272123	F7411900, F7412900, F7428900, F7429900, F7452900	BODY / NOZZLE BASE - 6 BRUSH	31.74
44	91001088	F7411900, F7412900, F7428900, F7429900, F7450100, F7452900	BRUSH BLOCK HOUSING - 6 BRUSH	7.36
45	25411017	ALL	HOSE CLAMP	1.12

MODEL No.

F7222-900
 F7227-900
 F7411-900
 F7412-900
 F7428-900
 F7429-900
 F7450-100
 F7452-900
 FH50039
 FH50040
 FH50050

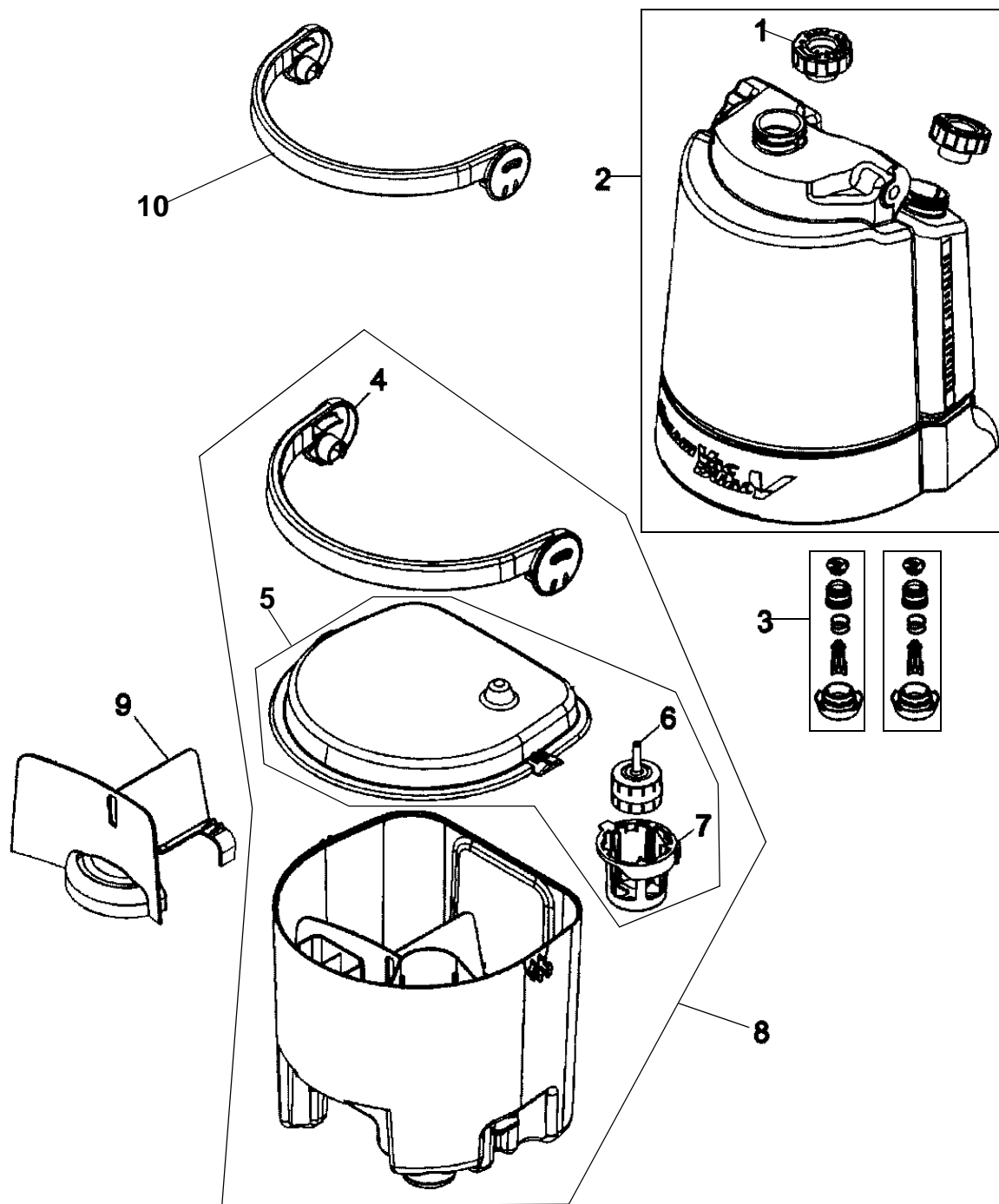


STEAM VAC™
DUAL V™
STEAM VAC™
ALL TERRAIN

MAX Extract
DUAL V

15

ASSEMBLY SCHEMATIC



MODEL No.

- F7222-900
- F7227-900
- F7411-900
- F7412-900
- F7428-900
- F7429-900
- F7450-100
- F7452-900
- FH50039
- FH50040
- FH50050



STEAM VAC™
DUAL V™
STEAM VAC™
ALL TERRAIN

MAX Extract
DUAL V

15

PART LISTING / PRICE LIST

ITEM	PART NUMBER	MODELS TO FIT	PART DESCRIPTION	LIST COST
1	42272138	F7222900, F7452900	THREADED CAP - SCREW ON	N.L.A.
	42272174	ALL	THREADED CAP - TWIST ON / NEW STYLE	5.13
2	90001295	F7222900, F7452900	C. WATER / SOLUTION TANK - OLD STYLE ORDER 42272104SP	N.L.A.
	42272104SP	ALL	C. WATER / SOLUTION TANK - NEW STYLE	45.35
3	43513026	ALL	VALVE ASSEMBLY	7.18
4	39457069	F7222900, F7411900, F7412900, F7428900, F7429900, F7450100, FH50039, FH50040, FH50050	DIRTY WATER TANK CARRYING HANDLE - SANDSTONE GRAY	2.26
	39457067	F7227900	DIRTY WATER TANK CARRYING HANDLE - LEGACY PURPLE SUB: ORDER 39457043 BLACK	2.26
	39457043	F7452900	DIRTY WATER TANK CARRYING HANDLE - BLACK	2.26
5	42272166	ALL	DIRTY WATER TANK LID ASSEMBLY WITH FLOAT	17.00
6	43538002	ALL	FLOAT ASSEMBLY - BRITE YELLOW	2.59
7	38719043	ALL	FLOAT RETAINER	2.59
8	42272172	ALL	DIRTY WATER TANK ASSEMBLY COMPLETE	34.01
9	38769033	ALL	DIRTY WATER TANK BAFFLE - FROST TRANSLUCENT	1.05
10	39457068	F7222900, F7411900, F7412900, F7428900, F7429900, F7450100, FH50039, FH50040, FH50050	HANDLE / LATCH - C.W. / SOLUTION TANK - SANDSTONE GRAY	6.79
	39457066	F7227900	HANDLE / LATCH - C.W. / SOLUTION TANK - LEGACY PURPLE	3.73
	39457062	F7452900	HANDLE / LATCH - C.W. / SOLUTION TANK - PATRIOT BLUE	4.53

MODEL No.

F7222-900
 F7227-900
 F7411-900
 F7412-900
 F7428-900
 F7429-900
 F7450-100
 F7452-900
 FH50039
 FH50040
 FH50050



Quick & Light Carpet Cleaner

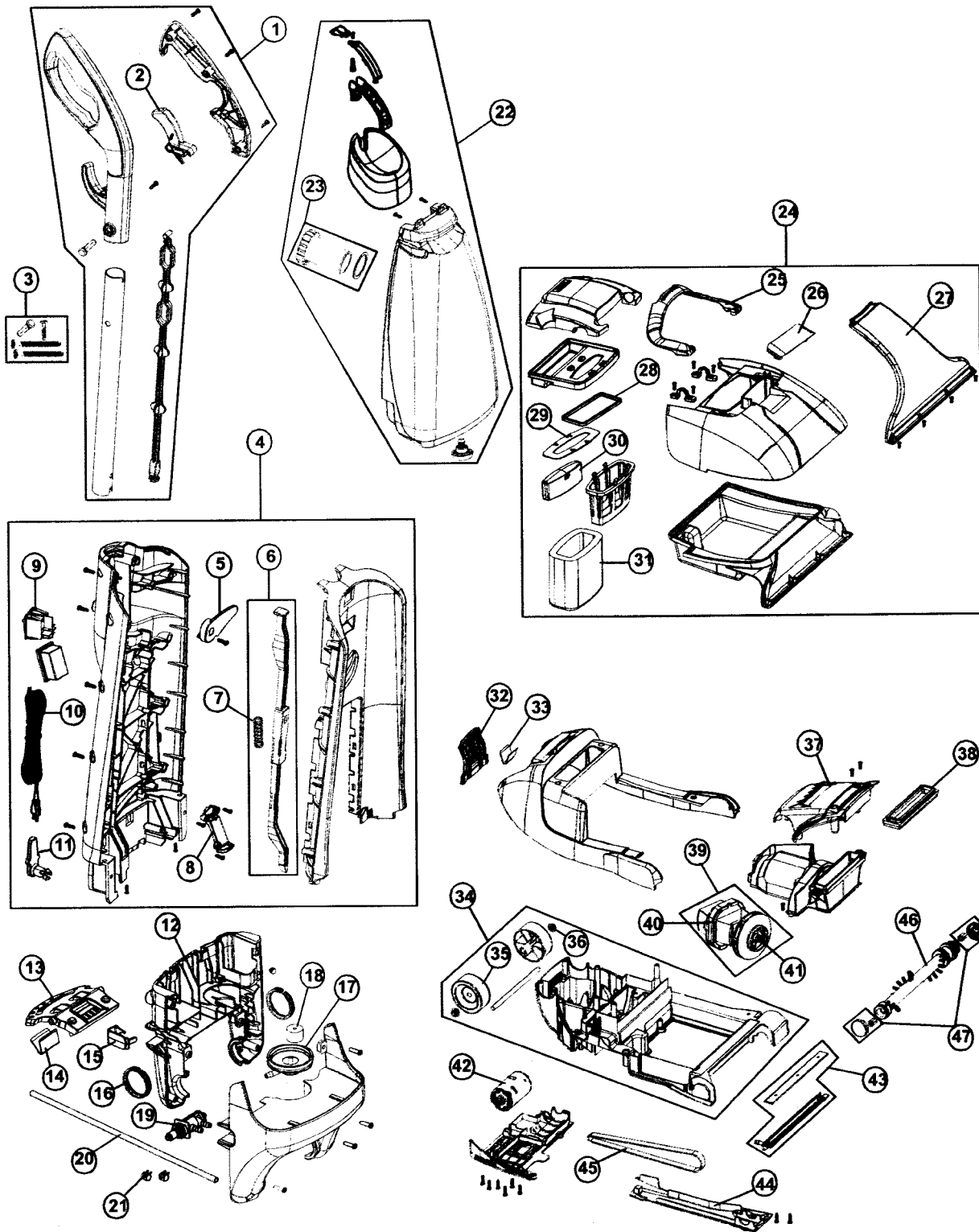
15

ASSEMBLY SCHEMATIC

MODEL No.

FH50010

FH50030





Quick & Light

Carpet Cleaner

15

PART LISTING / PRICE LIST

MODEL No.

FH50010
FH50030

Item	Part Number	Model's To Fit	Part Description	List Cost
1	2VQ1605000	FH50010, FH50030	UPPER HANDLE ASSEMBLY	13.47
2	1700625900	FH50010, FH50030	TRIGGER	.93
3	2VQ1900000	FH50010, FH50030	SCREW PACKAGE	.93
4	300434054	FH50010, FH50030	BACK PANEL ASSEMBLY	67.13
5	1VQ1525600	FH50010, FH50030	STRAIN RELIEF	.93
6	1VQ1520600	FH50010, FH50030	LOWER HANDLE ROD w/SPRING	1.56
7	1700525000	FH50010, FH50030	SPRING - LOWER HANDLE ROD	.93
8	1710507600	FH50010, FH50030	WIRE CONNECTOR COVER	.93
9	760729002	FH50010, FH50030	SWITCH	5.17
10	1700542600	FH50010, FH50030	25' POWER CORD	13.50
11	1720120600	FH50010, FH50030	CORD HOOK	.40
12	1710502600	FH50010, FH50030	LOWER BACK PANEL - BLACK	32.07
13	1700135B00	FH50010, FH50030	HANDLE RELEASE PEDAL / LOCK	1.54
14	1700142000	FH50010, FH50030	SPRING - HANDLE RELEASE PEDAL / LOCK	.58
15	1700574600	FH50010, FH50030	VALVE COVER - BLACK	.93
16	1700510000	FH50010, FH50030	LOWER HANDLE PIVOT RINGS	.61
17	1710580000	FH50010, FH50030	VALVE ADAPTOR PLATE - CLEAN WATER TANK	1.40
18	1700595600	FH50010, FH50030	FOAM - VALVE PLATE ADAPTOR	.30
19	2700575700	FH50010, FH50030	VALVE ASSEMBLY	4.48
20	1700567600	FH50010, FH50030	21" RUBBER TUBING	.70
21	1700568000	FH50010, FH50030	CLAMP - WATER TUBE	.93
22	300250040	FH50010, FH50030	CLEAN WATER TANK ASSEMBLY	32.50
23	2700805B00	FH50010, FH50030	FILL CUP - CLEAN WATER TANK	2.87
24	302135015	FH50010, FH50030	DIRTY WATER TANK ASSEMBLY	41.52
25	1700730600	FH50010, FH50030	HANDLE - DIRTY WATER TANK BLACK	2.42
26	2700755Q00	FH50010, FH50030	HOSE DOOR COVER - DIRTY WATER TANK	2.87
27	346221010	FH50010, FH50030	NOZZLE - DIRTY WATER TANK	6.19
28	1700725600	FH50010, FH50030	SEAL - DIRTY WATER TANK COVER	2.40
29	1700760600	FH50010, FH50030	FLOAT SEAL - DIRTY WATER TANK	.40
30	1700740900	FH50010, FH50030	FLOAT - DIRTY WATER TANK	1.63
31	1700750600	FH50010, FH50030	FOAM FILTER - DIRTY WATER TANK	2.27
32	1700735B00	FH50010, FH50030	LATCH - DIRT WATER TANK	.91
33	1700140000	FH50010, FH50030	SPRING - DIRTY WATER COVER LATCH	.40
34	2710100600	FH50010, FH50030	BASE ASSEMBLY W/ REAR WHEELS - BLACK	17.07
35	1VQ1103600	FH50010, FH50030	REAR WHEEL	.93



Quick & Light Carpet Cleaner

15

PART LISTING / PRICE LIST

Item	Part Number	Model's To Fit	Part Description	List Cost
36	1VQ1100600	FH50010, FH50030	WHEEL HUB CAP	.93
37	1700125600	FH50010, FH50030	MOTOR COVER - BLACK	2.57
38	1710230600	FH50010, FH50030	SEAL - MOTOR FAN HOUSING	5.70
39	2700212000	FH50010, FH50030	MOTOR ASSEMBLY	65.41
40	1700210600	FH50010, FH50030	MOTOR MOUNT - REAR	5.04
41	1700270000	FH50010, FH50030	FAN NUT	.93
42	1700301000	FH50010, FH50030	BRUSH MOTOR	23.32
43	2700150600	FH50010, FH50030	SPRAY PLATE	.93
44	1700115600	FH50010, FH50030	BELT COVER - BLACK	2.13
45	1400615600	FH50010, FH50030	STYLE 7 BELT	1.50
46	2710320000	FH50010, FH50030	BRUSH ROLL ASSEMBLY	9.65
47	2700327000	FH50010, FH50030	BRUSH BEARING / END CAPS	1.50

MODEL No.

FH50010
FH50030

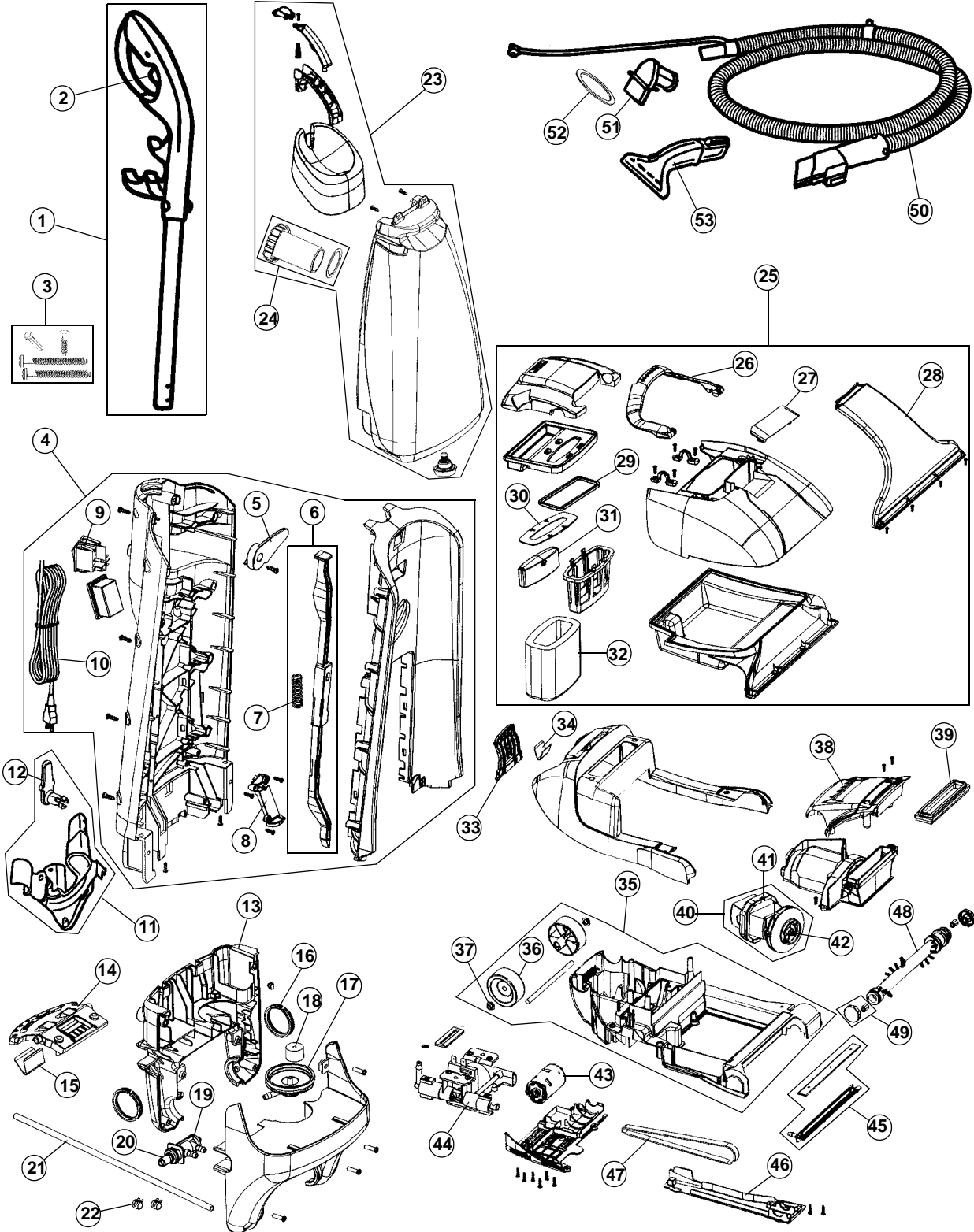


Quick & Light Carpet Cleaner

15

ASSEMBLY SCHEMATIC

MODEL NO.
FH50035





Quick & Light Carpet Cleaner

15

PART LISTING / PRICE LIST

MODEL No.

FH50035

Item	Part Number	Model's To Fit	Part Description	List Cost
1	300067613	FH50035	UPPER HANDLE ASSEMBLY	18.20
2	1700625900	FH50035	TRIGGER	.93
3	2VQ1900000	FH50035	SCREW PACKAGE	.93
4	300434058	FH50035	BACK PANEL ASSEMBLY	PEND
5	1VQ1525600	FH50035	STRAIN RELIEF	.93
6	1VQ1520600	FH50035	LOWER HANDLE ROD w/SPRING	1.56
7	1700525000	FH50035	SPRING - LOWER HANDLE ROD	.93
8	1710507600	FH50035	WIRE CONNECTOR COVER	.93
9	760729001	FH50035	SWITCH	4.87
10	1700542600	FH50035	25' POWER CORD	13.50
11	1VQ1515600	FH50035	TOOL CADDY WITH CORD HOOK	4.48
12	1720120600	FH50035	CORD HOOK	.40
13	1710502600	FH50035	LOWER BACK PANEL - BLACK	32.07
14	1700135B00	FH50035	HANDLE RELEASE PEDAL / LOCK	1.54
15	1700142000	FH50035	SPRING - HANDLE RELEASE PEDAL / LOCK	.58
16	1700510000	FH50035	LOWER HANDLE PIVOT RINGS	.61
17	1710580000	FH50035	VALVE ADAPTOR PLATE - CLEAN WATER TANK	1.40
18	1700595600	FH50035	FOAM - VALVE PLATE ADAPTOR	.30
19	2700575700	FH50035	VALVE ASSEMBLY	4.48
20	1770140000	FH50035	PORT CONNECTOR	3.21
21	1700567600	FH50035	21" RUBBER TUBING	.70
22	1700568000	FH50035	CLAMP - WATER TUBE	.93
23	300250040	FH50035	CLEAN WATER TANK ASSEMBLY	32.50
24	2700805B00	FH50035	FILL CUP - CLEAN WATER TANK	2.87
25	302135015	FH50035	DIRTY WATER TANK ASSEMBLY	41.52
26	1700730600	FH50035	HANDLE - DIRTY WATER TANK BLACK	2.42
27	2700755Q00	FH50035	HOSE DOOR WITH SEAL - DIRTY WATER TANK	2.87
28	346221010	FH50035	NOZZLE - DIRTY WATER TANK	6.19
29	1700725600	FH50035	SEAL - DIRTY WATER TANK COVER	2.40
30	1700760600	FH50035	FLOAT SEAL - DIRTY WATER TANK	.40
31	1700740900	FH50035	FLOAT - DIRTY WATER TANK	1.63
32	1700750600	FH50035	FOAM FILTER - DIRTY WATER TANK	2.27
33	1700735B00	FH50035	LATCH - DIRT WATER TANK	.91
34	1700140000	FH50035	SPRING - DIRTY WATER COVER LATCH	.40
35	2710100600	FH50035	BASE ASSEMBLY w/ REAR WHEELS - BLACK	17.07



Quick & Light Carpet Cleaner

15

PART LISTING / PRICE LIST

MODEL No.

FH50035

Item	Part Number	Model's To Fit	Part Description	List Cost
36	1VQ1103600	FH50035	REAR WHEEL	.93
37	1VQ1100600	FH50035	WHEEL HUB CAP	.93
38	1700125600	FH50035	MOTOR COVER - BLACK	2.57
39	1710230600	FH50035	SEAL - MOTOR FAN HOUSING	5.70
40	2700212000	FH50035	MOTOR ASSEMBLY	65.41
41	1700210600	FH50035	MOTOR MOUNT - REAR	5.04
42	1700270000	FH50035	FAN NUT	.93
43	1700301000	FH50035	BRUSH MOTOR	23.32
44	1710400000	FH50035	PUMP	24.46
45	2700150600	FH50035	SPRAY PLATE	.93
46	1700115600	FH50035	BELT COVER - BLACK	2.13
47	1400615600	FH50035	STYLE 7 BELT	1.50
48	2710320000	FH50035	BRUSH ROLL ASSEMBLY	9.65
49	2700327000	FH50035	BRUSH BEARING / END CAPS	1.50
50	2771103000	FH50035	8' HOSE ASSEMBLY	18.25
51	2770110600	FH50035	ADAPTOR - HOSE / DIRTY WATER TANK	1.73
52	1700758600	FH50035	SEAL - ADAPTOR	.93
53	2771600600	FH50035	UPHOLSTERY NOZZLE TOOL	14.89

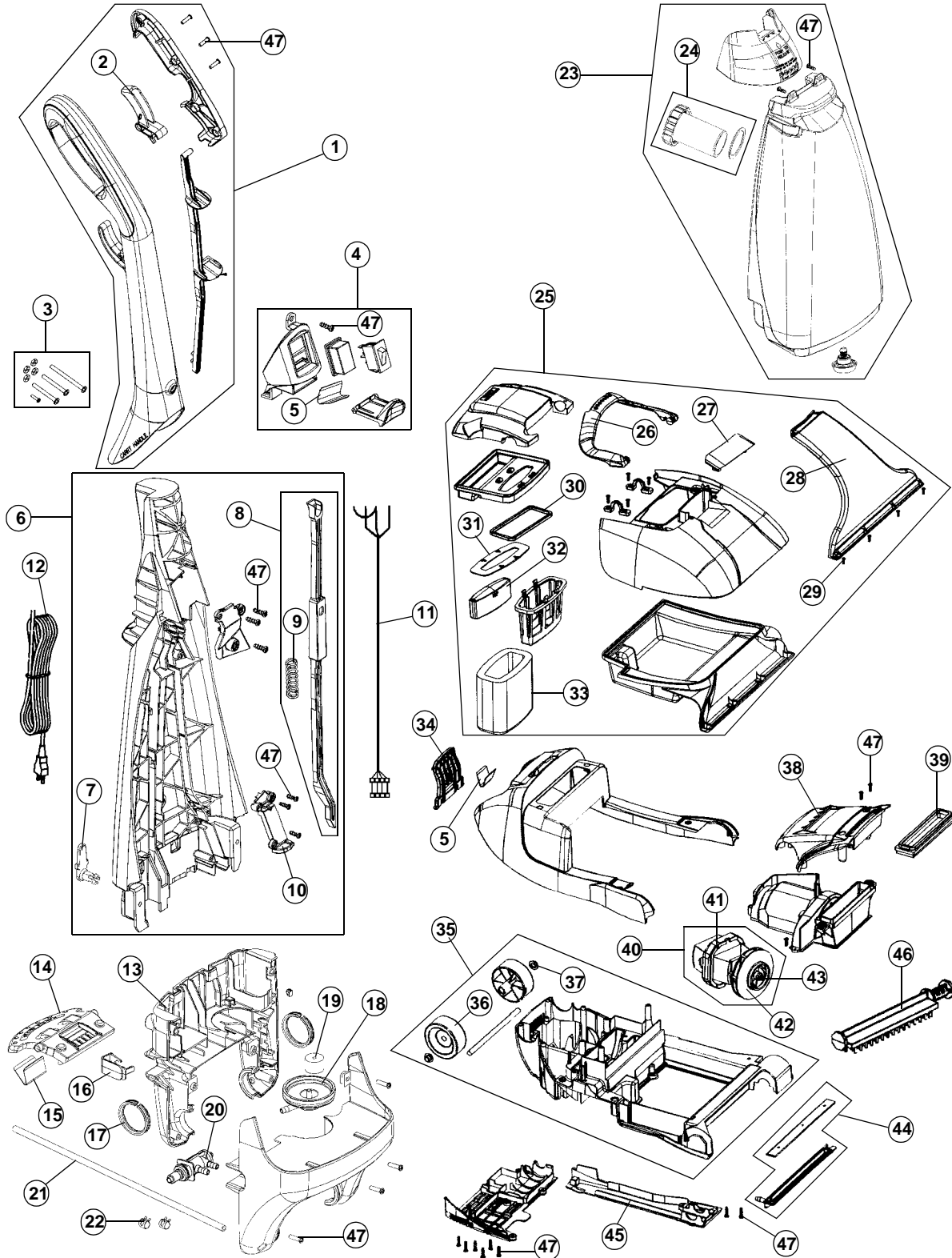


Quick & Light™

15

ASSEMBLY SCHEMATIC

MODEL NO.
FH50005





Quick & Light™

15

PART LISTING / PRICE LIST

MODEL No.

FH50005

Item	Part Number	Model's To Fit	Part Description	List Cost
1	300067140	FH50005	UPPER HANDLE ASSEMBLY	PEND
2	1700625900	FH50005	TRIGGER	.93
3	2710673600	FH50005	HANDLE SCREW ASSEMBLY	1.55
4	302139011	FH50005	SWITCH PLATE ASSEMBLY	PEND
5	1700140000	FH50005	SPRING - CW TANK / DW TANK LATCH	.40
6	300434062	FH50005	BACK PANEL ASSEMBLY	PEND
7	1720120600	FH50005	CORD HOOK - BLACK	.40
8	1VQ1520600	FH50005	LOWER HANDLE ROD W/SPRING	1.56
9	1700525000	FH50005	SPRING - LOWER HANDLE ROD	.93
10	1710507600	FH50005	WIRE CONNECTOR COVER	.93
11	1710530000	FH50005	UPPER WIRE HARNESS	1.60
12	1700542600	FH50005	POWER CORD - 25 FT	13.50
13	1710502600	FH50005	LOWER HANDLE BOTTOM - BLACK	32.07
14	1700135B00	FH50005	HANDLE RELEASE PEDAL / LOCK	1.54
15	1700142000	FH50005	SPRING - HANDLE RELEASE PEDAL / LOCK	.58
16	1700574600	FH50005	VALVE COVER - BLACK	.93
17	1700510000	FH50005	LOWER HANDLE PIVOT RING	.61
18	1710580000	FH50005	VALVE ADAPTOR PLATE	1.40
19	1700595600	FH50005	TANK ADAPTER SCREEN	.30
20	2700575700	FH50005	VALVE ASSEMBLY	4.48
21	1700567600	FH50005	21" TUBING VALVE/SPRAY PLATE	.70
22	1700568000	FH50005	CLAMP - WATER TUBE	.93
23	300250046	FH50005	CLEAN WATER BOTTLE ASSEMBLY	32.50
24	2700805B00	FH50005	FILL CUP - CLEAN WATER TANK	2.87
25	302135015	FH50005	DIRTY WATER TANK ASSEMBLY	41.52
26	1700730600	FH50005	HANDLE - DIRTY WATER TANK BLACK	2.42
27	2700755Q00	FH50005	HOSE DOOR WITH SEAL - DIRTY WATER TANK	2.87
28	346221010	FH50005	NOZZLE - DIRTY WATER TANK	6.19
29	1700155000	FH50005	SCREW	.15
30	1700725600	FH50005	SEAL - DIRTY WATER TANK COVER	2.40
31	1700760600	FH50005	FLOAT SEAL - DIRTY WATER TANK	.40
32	1700740900	FH50005	FLOAT - DIRTY WATER TANK	1.63
33	1700750600	FH50005	FOAM FILTER - DIRTY WATER TANK	2.27
34	1700735B00	FH50005	LATCH - DIRT WATER TANK	.91
35	2710100600	FH50005	BASE ASSEMBLY W/ REAR WHEELS - BLACK	17.07



Quick & Light™

15

PART LISTING / PRICE LIST

MODEL No.

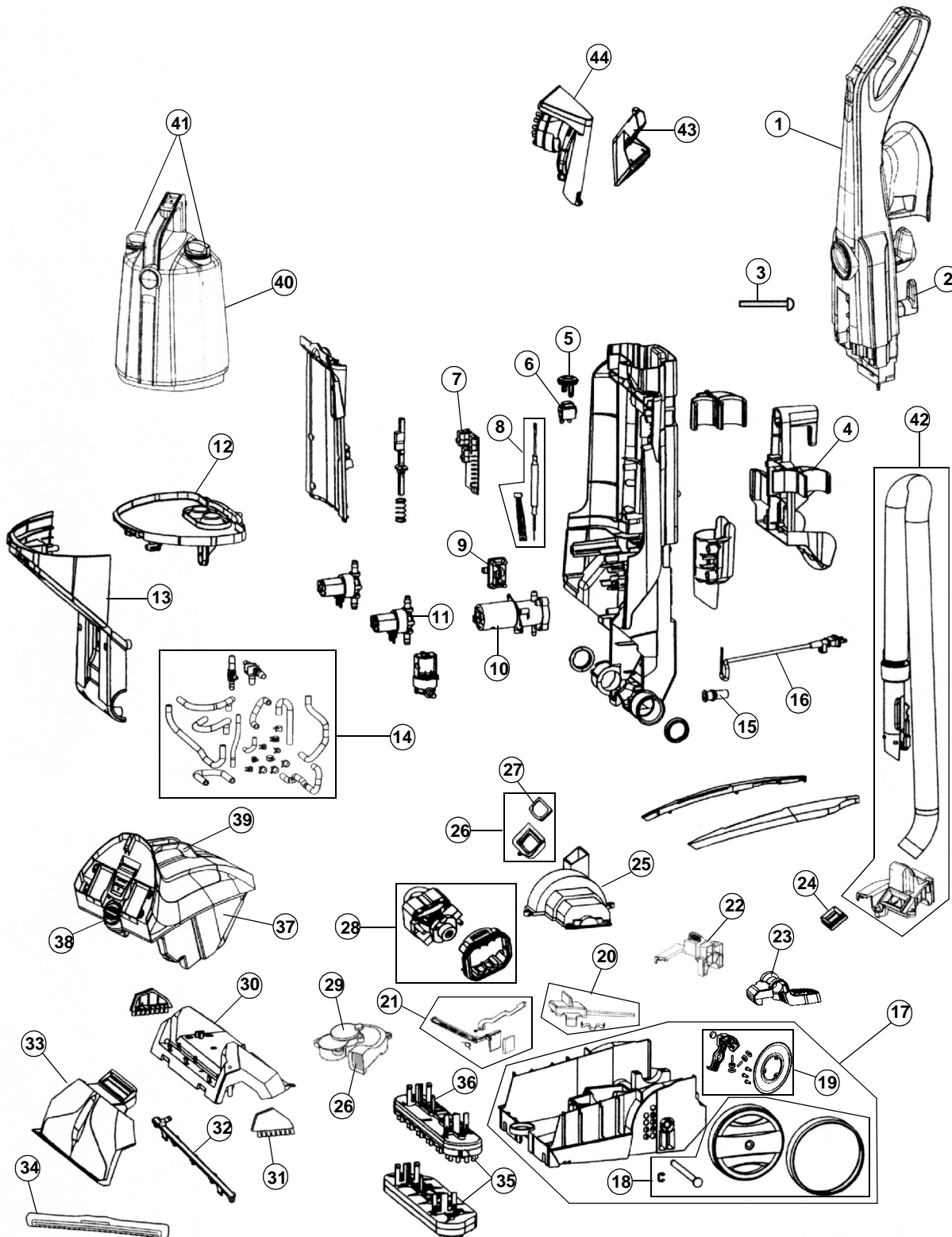
FH50005

Item	Part Number	Model's To Fit	Part Description	List Cost
36	1VQ1103600	FH50005	REAR WHEEL	.93
37	1VQ1100600	FH50005	WHEEL HUB CAP	.93
38	1700125600	FH50005	MOTOR COVER BASE - BLACK	2.57
39	1710230600	FH50005	SEAL - MOTOR FAN HOUSING	5.70
40	9710212000	FH50005	MOTOR ASSEMBLY	51.55
41	1700210600	FH50005	MOTOR MOUNT - REAR	5.04
42	2710240600	FH50005	FAN ASSEMBLY	4.48
43	1700270000	FH50005	FAN NUT	.93
44	2700150600	FH50005	SPRAY PLATE ASSEMBLY	.93
45	1700115600	FH50005	BASE BELT COVER - BLACK	2.13
46	2771705000	FH50005	BRUSH BAR ASSEMBLY	4.48
47	1700130000	FH50005	SCREW	.15



15

ASSEMBLY SCHEMATIC



MODEL NO.

- FH50210
- FH50220
- FH50230
- FH50240



15

PART LISTING / PRICE LIST

MODEL No.

FH50210
FH50220
FH50230
FH50240

Item	Part Number	Model's To Fit	Part Description	List Cost
1	440001365	FH50210, FH50220	UPPER HANDLE ASSEMBLY - SEASIDE BLUE	
	304332001	FH50230	UPPER HANDLE ASSEMBLY - BILLOWY BLUE	
	303799001	FH50240	UPPER HANDLE ASSEMBLY WITH SURGE - BILLOWY BLUE	
2	39442060	ALL	UPPER CORD HOOK	
3	440001355	ALL	UPPER HANDLE SCREW	
4	520843001	ALL	TOOL HOLDER / HOSE SUPPORT	
5	440001380	ALL	POWER SWITCH BOOT COVER	
6	760732001	ALL	POWER SWITCH	
7	440001367	FH50210, FH50220, FH50230	MAIN PC BOARD	
	440001362	FH50240	MAIN PC BOARD - SURGE	
8	440001371	FH50210, FH50220, FH50230	WIRING KIT ASSEMBLY	
	440001377	FH50240	WIRING KIT ASSEMBLY - SURGE	
9	440001383	ALL	LOW FLOW METER ASSEMBLY	
10	303701001	ALL	GEAR PUMP ASSEMBLY	
11	440001361	FH50210, FH50220, FH50230	PRESSURE SOLENOID (1)	
	440001361	FH50240	PRESSURE SOLENOID (3)	
12	303806001	ALL	RESERVOIR ASSEMBLY	
13	440001379	FH50210, FH50220	FASCIA WITH SEAL ASSEMBLY - SEASIDE BLUE	
	440001378	FH50230, FH50240	FASCIA WITH SEAL ASSEMBLY - BILLOWY BLUE	
14	440001368	FH50210, FH50220, FH50230	TUBING KIT	
	440001370	FH50240	TUBING KIT - SURGE	
15	59156110	ALL	POWER CORD PROTECTOR	
16	440001363	ALL	POWER CORD - 20' BLACK	
17	440001372	FH50210, FH50220, FH50230	MAIN NOZZLE BODY ASSEMBLY WITH WHEELS - SEASIDE BLUE	
	304336001	FH50240 FH50230 CAN SUB	MAIN NOZZLE BODY ASSEMBLY WITH WHEELS AUTO RINSE - BILLOWY BLUE	
18	440001364	ALL	REAR WHEEL ASSEMBLY	
19	28218052	FH50240	AUTO RINSE SWITCH ASSEMBLY	
20	303783001	FH50230, FH50240	INDICATOR KNOB WITH SPRING	
21	304338001	ALL	USER LINKAGE / FLAP DOOR KIT	
22	520908001	ALL	TRUNNION COVER - RIGHT BILLOWY BLUE	



15

PART LISTING / PRICE LIST

MODEL No.

FH50210
FH50220
FH50230
FH50240

Item	Part Number	Model's To Fit	Part Description	List Cost
23	440001353	ALL	HANDLE RELEASE PEDAL	
24	521367001	ALL	SEAL - HOSE CONNECTOR ADAPTOR	
25	440001359	ALL	MOTOR COVER ASSEMBLY	
26	440001374	ALL	STAND PIPE SEAL ASSEMBLY	
27	36426107	ALL	SCREEN ASSEMBLY - ORANGE	.40
28	304337001	ALL	MOTOR WITH MOTOR MOUNT ASSEMBLY	
29	304347001	ALL	TURBINE ASSEMBLY	
30	440001373	ALL	MAIN NOZZLE BODY FRONT	
31	39511014	FH50230, FH50240	EDGE GROMMER	.56
32	440001369	ALL	MANIFOLD SPRAYER ASSEMBLY	
33	440001357	FH50210	NOZZLE ASSEMBLY	
	440001356	FH50220, FH50230, FH50240	NOZZLE ASSEMBLY	
34	440001358	FH50230, FH50240	NOZZLE SQUEEGEE ASSEMBLY	
35	304334001	FH50210, FH50220	BRUSH BLOCK ASSEMBLY - 6 BRUSH ANTIMICROBIAL	
	304346001	FH50230, FH50240	BRUSH BLOCK ASSEMBLY - 11 BRUSH ANTIMICROBIAL	
36	440001354	ALL	BRUSH BLOCK DRIVE PIN ASSEMBLY	
37	303777001	ALL	RECOVERY TANK ASSEMBLY - CRYSTAL GRAY WITHOUT TANK LID	
37A	304331001	ALL	PLUNGER ASSEMBLY - RECOVERY TANK	
38	303786001	ALL	DUMP CAP ASSEMBLY	
39	304345001	ALL	RECOVERY TANK LID ASSEMBLY - CRYSTAL GRAY	
40	303763001	ALL	CLEAN WATER SOLUTION TANK ASSEMBLY	
41	303764001	ALL	CAP ASSEMBLY - CLEAN WATER SOLUTION TANK	
42	304335001	ALL	HOSE ASSEMBLY WITH TRUNNION - BILLOWY BLUE	
43	38613040	ALL	STAIR / UPHOLSTERY TOOL WITH BRUSH	9.30
44	302598001	FH50230, FH50240 CAN BE USED ON ALL	TURBINE POWER HAND TOOL - LIME GREEN	32.07



15

NOTES

MODEL No.

- F5810
- F5835-900
- F5914-900
- F5915-100
- F5915-900
- F5917-900
- F5918-900
- F6207-900
- F6212-900
- F6215-900
- F7222-900
- F7227-900
- F7411-900
- F7412-900
- F7428-900
- F7429-900
- F7450-100
- F7452-900
- FH50005
- FH50010
- FH50015
- FH50020
- FH50030
- FH50035
- FH50039
- FH50040
- FH50045
- FH50046
- FH50050
- FH50010
- FH50220
- FH50230
- FH50240

This document was created with Win2PDF available at <http://www.daneprairie.com>.
The unregistered version of Win2PDF is for evaluation or non-commercial use only.