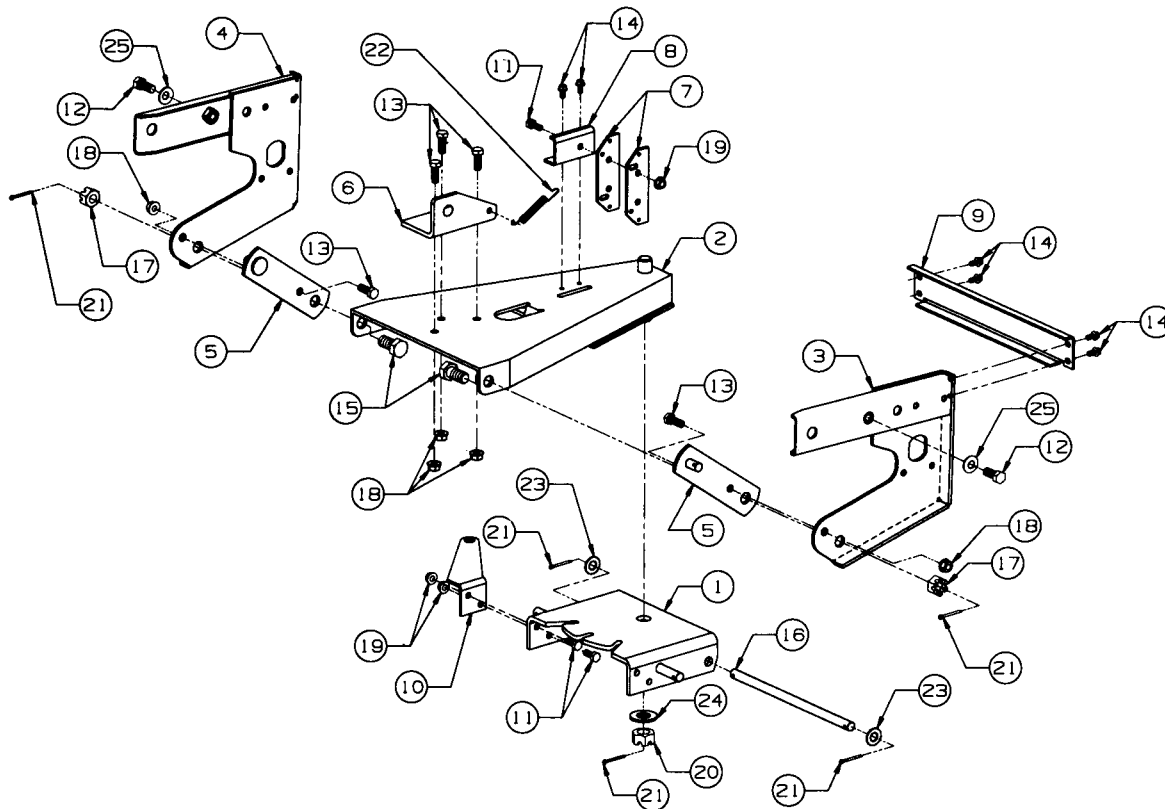
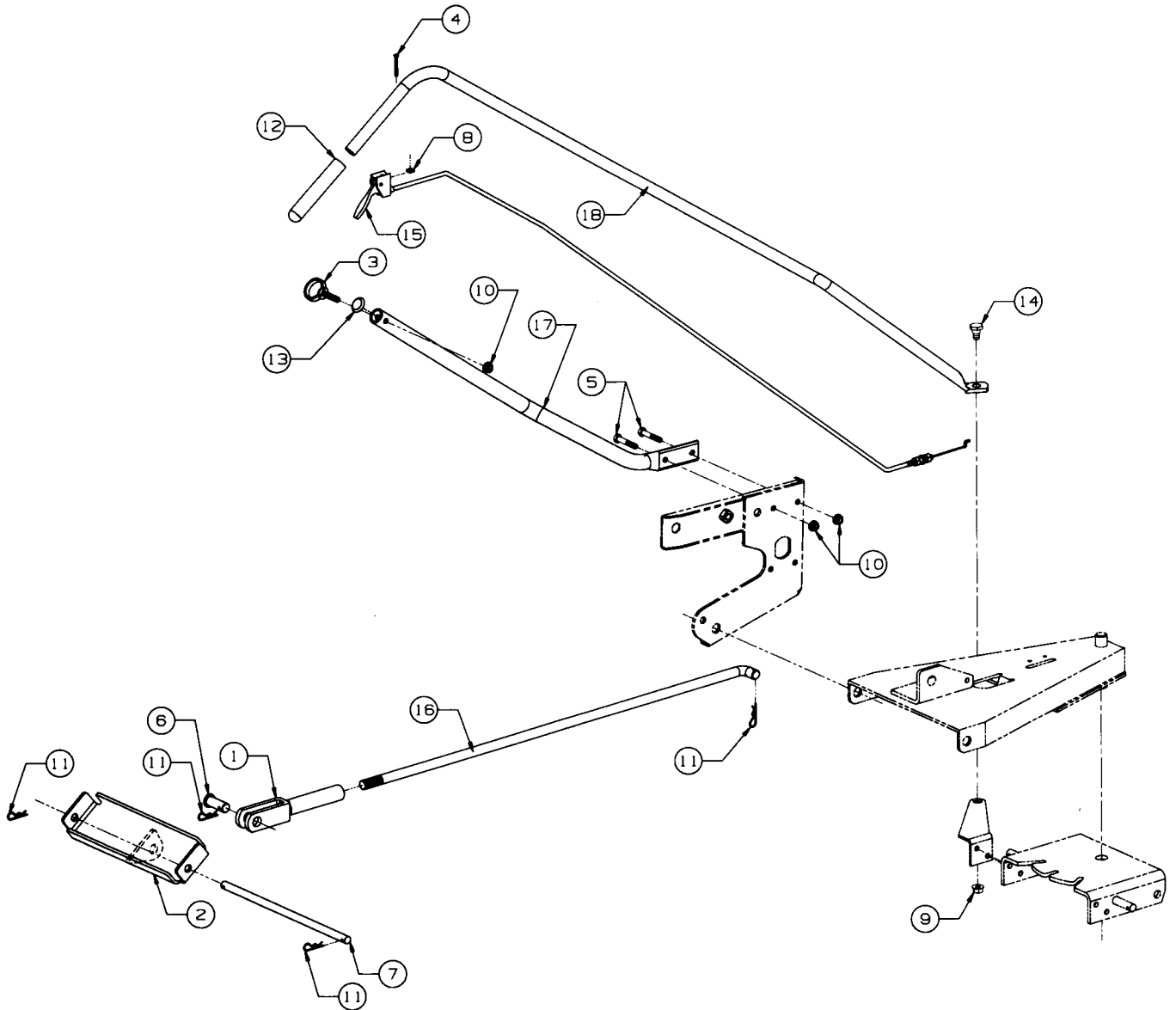


BLADE PIVOT AND MOUNTING



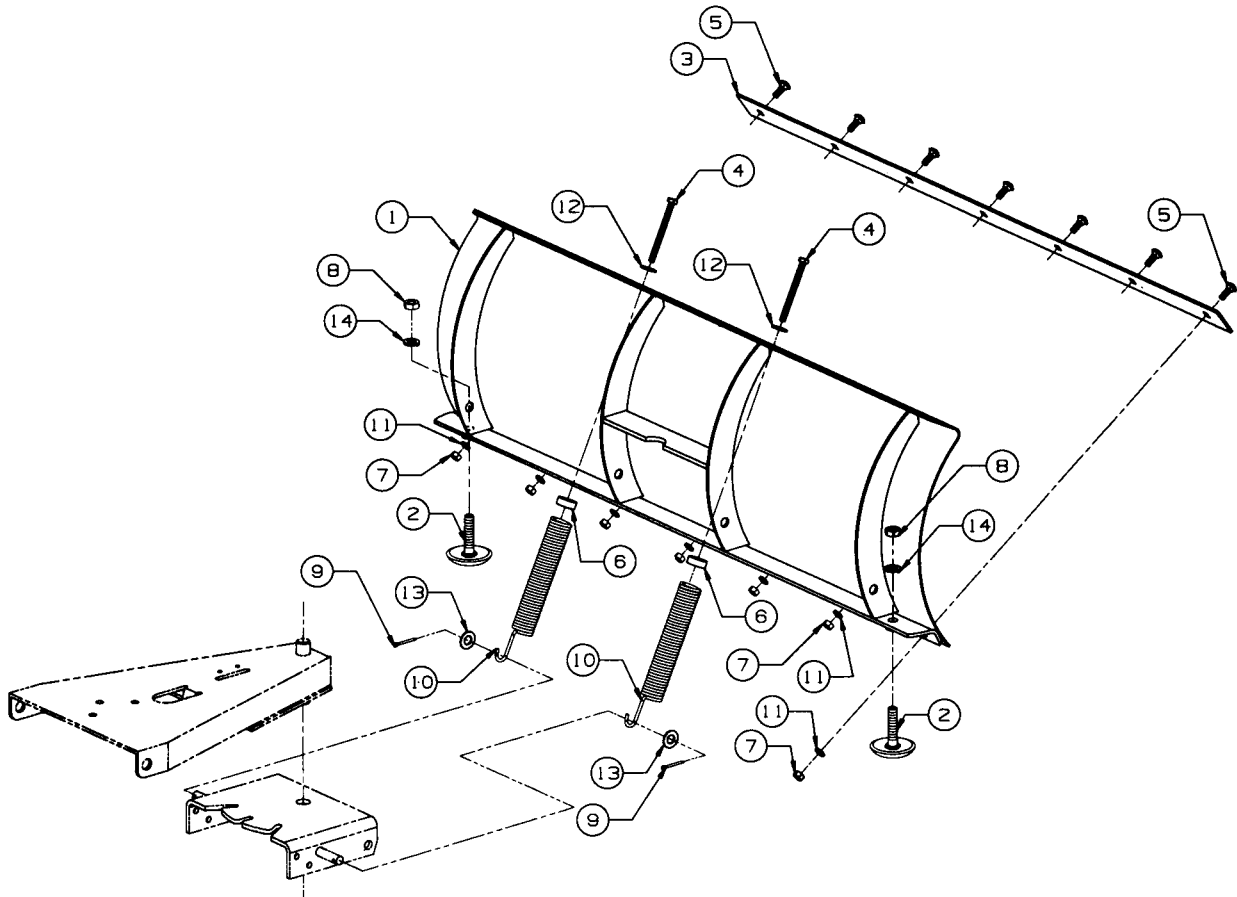
REF. NO.	PART NUMBER	DESCRIPTION	QTY	REF. NO.	PART NUMBER	DESCRIPTION	QTY
1	603-0266	Pivot Assy, Blade	1	14	710-0599	Screw, Hex Wash Hd Tapp, 1/4-20 X .50 Lg	6
2	603-0267	A-Frame, Blade	1	15	710-0964A	Screw, Hex Cap, 5/8-18 X 1.25 Lg GR5	2
3	603-0268	Hitch, Blade - RH	1	16	711-3402	Rod, Blade Pivot, .50 Dia X 10.22 Lg	1
4	603-0269	Hitch, Blade - LH	1	17	712-0386A	Nut, Hex Slotted, 5/8-18	2
5	603-0270	Arm, Mounting	2	18	712-0431	Nut, Hex Flanged Lock, 3/8-16	5
6	703-2679	Bracket, Front Lift	1	19	712-3004A	Nut, Hex Flange Top Lock, 5/16-18	3
7	703-2692	Plate, Blade Angle Latch	2	20	712-3047	Nut, Hex Slotted, 3/4-16 GR5	1
8	703-2693	Bracket, Latch Pivot	1	21	714-0470	Pin, Cotter, 1/8 Dia X 1.25 Lg	5
9	703-2694	Bracket, Blade Support	1	22	732-0320	Spring, Extension, .38 OD X 3.25 Lg	1
10	703-2696	Arm, Blade Angle	1	23	736-0272	Washer, Flat, .510 X 1.0 X .06 Thk	2
11	710-0118	Screw, Hex Cap, 5/16-18 X75 Lg	3	24	736-0315	Washer, Flat, .750 X 1.50 X120 Thk	1
12	710-0505	Screw, Hex Cap, 7/16-14 X 1.0 Lg	2	25	736-0407	Washer, Bell, .45 X 1.0 X .062 Thk	2
13	710-0514	Screw, Hex Cap, 3/8-16 X 1.0 Lg GR5	5				

LIFT ROD AND PIVOT CONTROL



REF. NO.	PART NUMBER	DESCRIPTION	QTY	REF. NO.	PART NUMBER	DESCRIPTION	QTY
1	10991	Clevis, Adjustment	1	10	712-3004A	Nut, Hex Flange Top Lock, 5/16-18	3
2	603-0271	Bracket, Rear Lift	1	11	714-0147	Pin, Cotter, 1/8 Dia X 1.75 Lg	4
3	603-0297	Eyebolt	1	12	720-0283	Grip, Foam	1
4	710-1233	Screw, Oval c/Sunk, #10-24 X ... 1.36 Lg	1	13	726-0331	Plug, Button	1
5	710-3180	Screw, Hex Cap, 5/16-18 X	2	14	738-0234	Bolt, Shoulder	1
6	711-0654	Pin, Clevis, 5/8 Dia X 1.34 Lg	1	15	746-3059	Cable, Blade Pivot Release	1
7	711-3401	Rod, .50 Dia X 12.50 Lg	1		725-0157	Tie, Self-Clinch Cable	3
8	712-0127	Nut, Flat, #10-24	1	16	747-3240	Rod, Blade Lift	1
9	712-0431	Nut, Hex Flanged Lock, 3/8-16 ..	1	17	749-3042	Tube, Pivot Handle Support	1
				18	749-3043	Handle, Blade Pivot	1

BLADE



REF. NO.	PART NUMBER	DESCRIPTION	QTY
1	603-0265	Blade, 42" Dozer	1
	777-2658	Graphic, Cub Cadet	1
2	703-0650	Shoe, Skid	2
3	703-0658	Blade, Cutting Edge	1
4	710-1207	Screw, Hex Cap, 5/16-18 X 3.50 Lg	2
5	710-3105	Bolt, Sht Nk Carriage, 5/16-18 X .875 Lg	7
6	711-0509	Insert, Spring	2
7	712-3010	Nut, Hex, 5/16-18 GR5	7
8	712-3048	Nut, Hex Jam, 1/2-13 GR5	2
9	714-0470	Pin, Cotter, 1/8 Dia X 1.25 Lg ...	2
10	732-3123	Spring, Extension, 1.25 Dia X 6.0 Lg	2
11	736-0119	Washer, Lock, 5/16	7
12	736-0159	Washer, Flat, .349 X .879 X063 Thk	2
13	736-0272	Washer, Flat, .510 X 1.0 X06 Thk	2
14	736-0921	Washer, Lock, 1/2	2