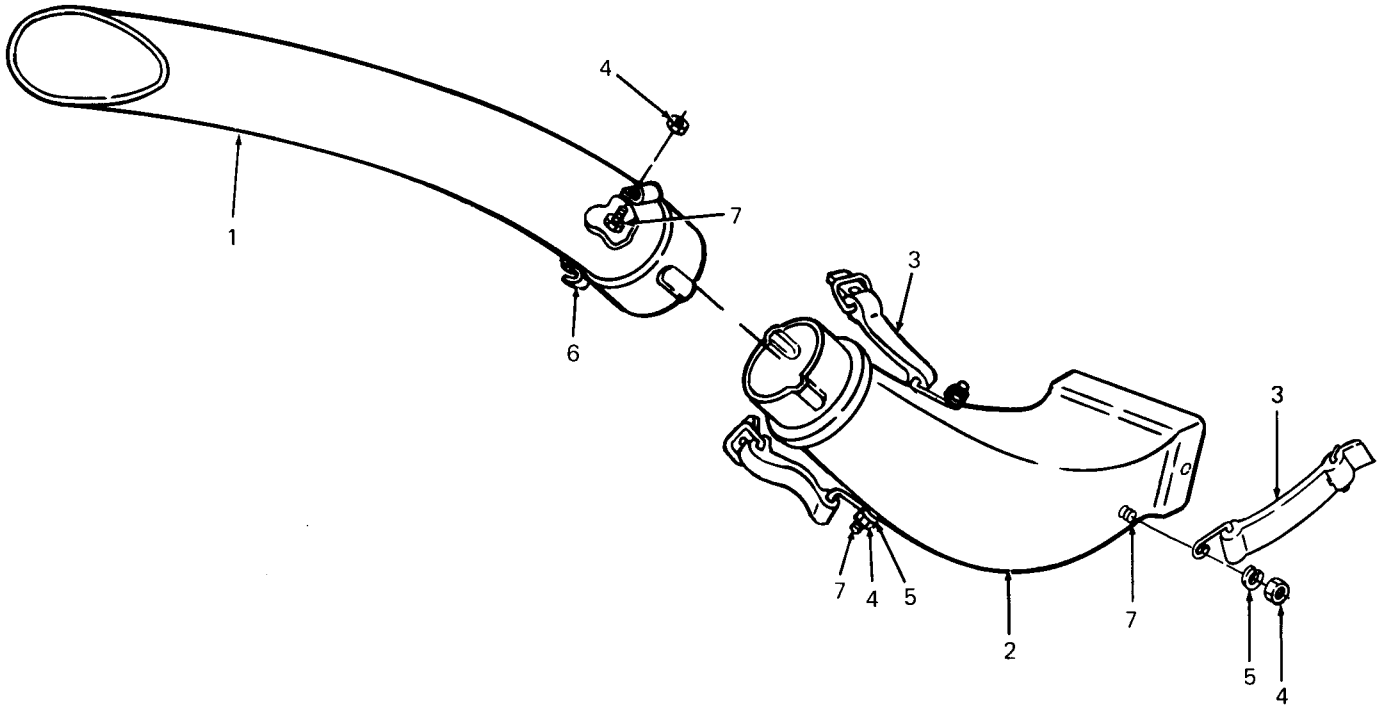


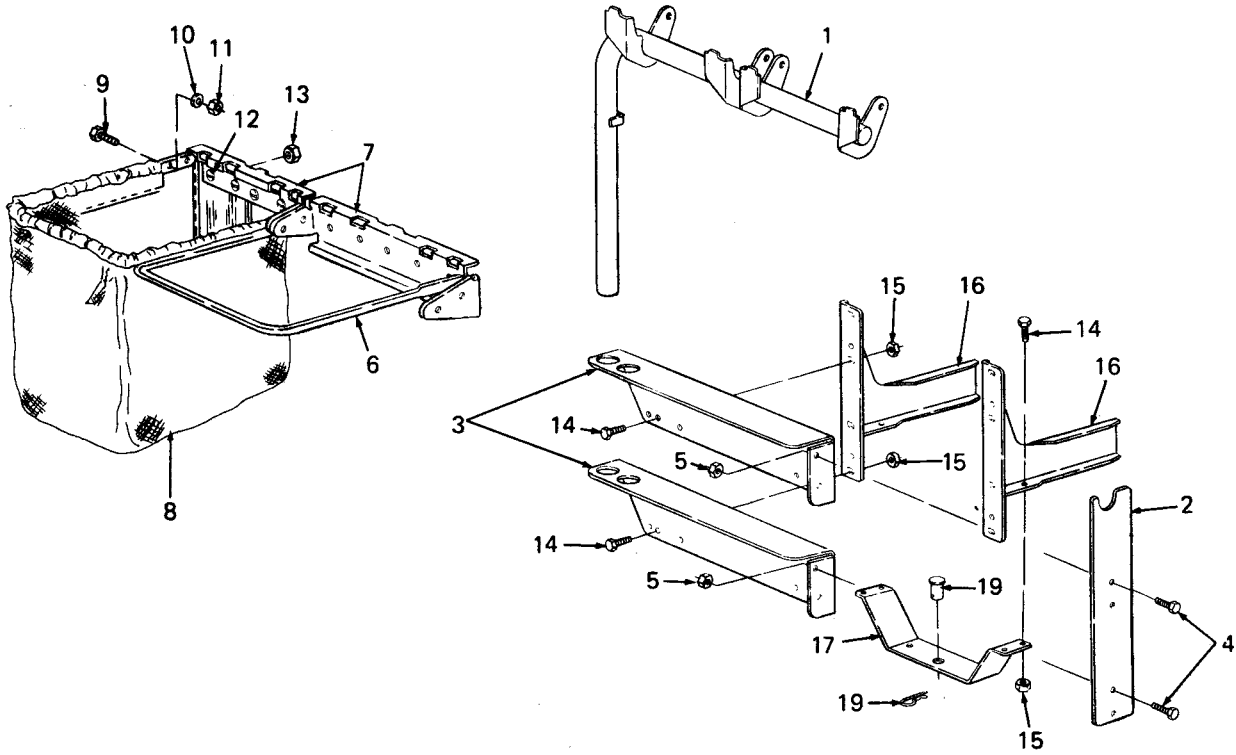
DISCHARGE CHUTE

SEE APPROPRIATE MOWER  
DECK FOR BAGGING BLADES



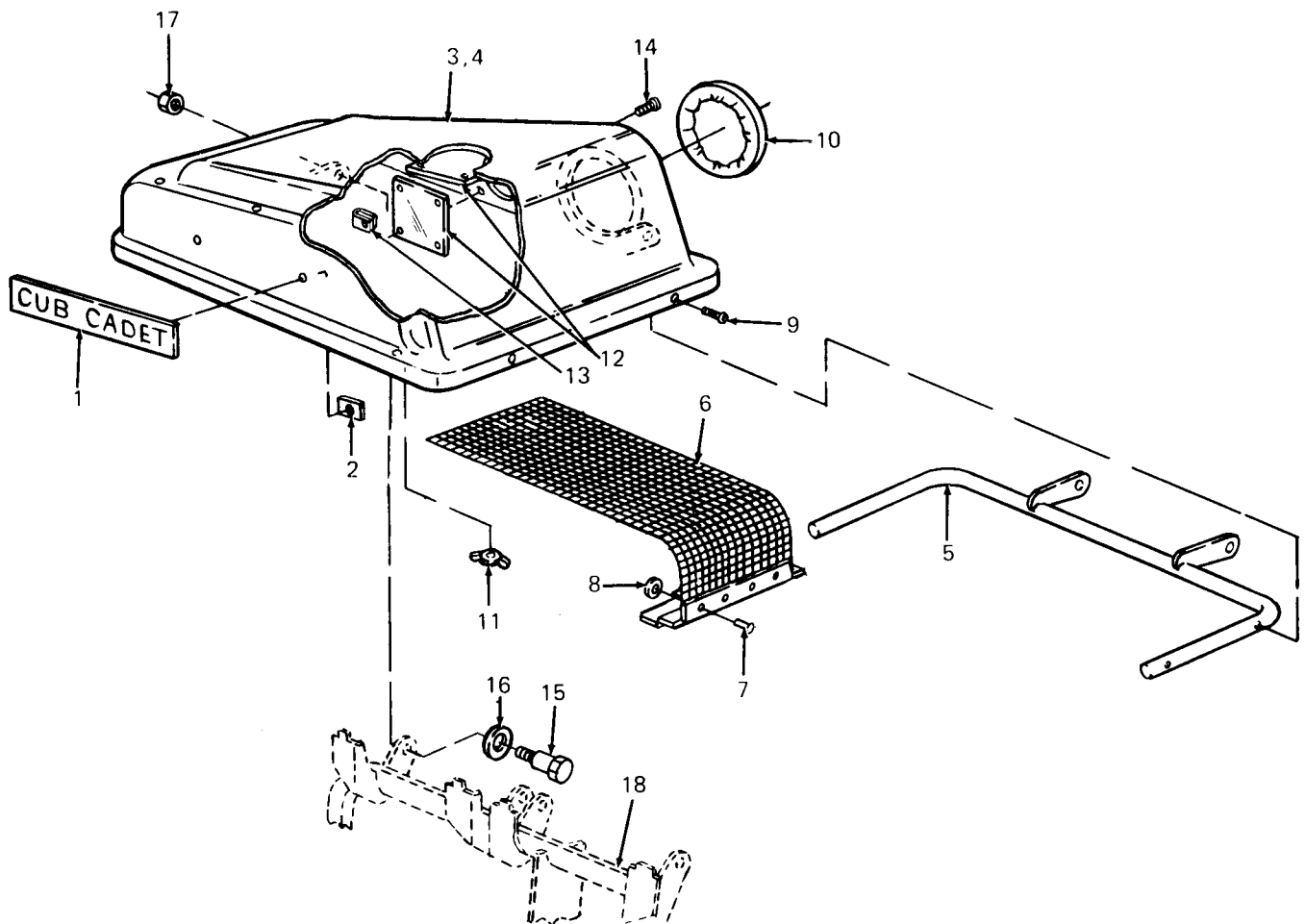
REF. NO.	PART NUMBER	DESCRIPTION	QTY
1	731-0899	Tube, Catcher .....	1
2	731-3071	Chute, Discharge .....	1
3	723-0383	Strap Assy, Retainer .....	3
	732-0695	Hook, Wire Eyelet .....	3
	732-0696	Hook, Wire Rectangular .....	3
4	712-0324	Nut, Hex Insert Lock, 1/4-20 .....	5
5	736-0175	Washer, Spring, .265 ID X .562 OD .....	3
6	16606	Hook Bracket, Retainer .....	2
7	710-0258	Screw, Hex Cap, 1/4-20 X .62 Lg .....	5

**BAG, FRAME AND SUPPORT**



REF. NO.	PART NUMBER	DESCRIPTION	QTY
1	16588	Tube Assy, Support .....	1
2	16593A	Bracket, Support .....	1
3	16587B	Bracket, Support Tube Mounting .....	2
4	710-0118	Screw, Hex Cap, 5/16-18 X .75 Lg .....	2
5	712-3004A	Nut, Hex Flange Top Lock, .....	2
		5/16-18 GR5	
6	749-0701	Frame, Catcher Bag .....	2
7	16591	Bracket, Bag Frame Hanger .....	2
8	764-0221	Bag, Grass Catcher .....	2
9	710-0412	Screw, Hex, 1/4-28 X .75 Lg .....	8
10	736-0329	Washer, Lock, 1/4 .....	16
11	712-0314	Nut, Hex, 1/4-28 .....	8
12	710-0192	Screw, Truss Mach, #10-24 X .38 Lg ...	10
13	712-0272	Nut, Hex Sems, #10-24 .....	10
14	710-0751	Screw, Hex, 1/4-20 X .62 Lg GR5 .....	12
15	712-3027	Nut, Hex, 1/4-20 GR5 .....	12
16	703-2490	Bracket, Frame Support .....	2
17	703-2489	Brace, Cross .....	1
18	714-3020	Pin, Internal Cotter .....	1
19	711-0309	Pin, Clevis, .62 Dia .....	1

COVER ASSEMBLY



REF. NO.	PART NUMBER	DESCRIPTION	QTY	REF. NO.	PART NUMBER	DESCRIPTION	QTY
1	731-3081	Plaque, Logo w/Studs .....	1	9	710-1005	Screw, Hex Wash. Hd. Tapp, ..... 1/4 X .50 Lg	9
2	726-3040	Nut, Push-on Speed .....	2	10	723-0412	Seal, Tube, 7.1 ID .....	1
3	16594A	Cover Assy, Grass Catcher .....	1	11	726-0258	Twist Fastener, Zip .....	18
		(Includes Ref No. 4, 5, 6, 9 [Qty 9] 10, 11 [Qty 18], 12 [Qty 2], 13 [Qty 4] & 14 [Qty 4])		12	731-0824	Plate, Plastic, 1/8 Thk X 5.62 Sq..	2
4		Order Grass Catcher Cover Assy 16594A		13	726-0244	Nut, U-Type Speed .....	4
5	16596	Bracket Assy, Hinge .....	1	14	710-0351	Screw, Truss Mach., #10 X .50 Lg	4
6	16847A	Screen Assy (Includes Ref ..... No. 7 [Qty 4] & 8 [Qty 4])	1	15	738-0380	Screw, Shld .....	2
7	728-0123	Rivet, Pop .....	4	16	736-0253	Washer, Bell, .505 X 1.0 X ..... .075 Thk	2
8	736-0400	Washer, Flat, .218 X .62 X .063 ..	4	17	712-0431	Nut, Hex Flanged Lock, 3/8-16 ....	2
				18	16588	Tube Assy, Catcher Support .....	1