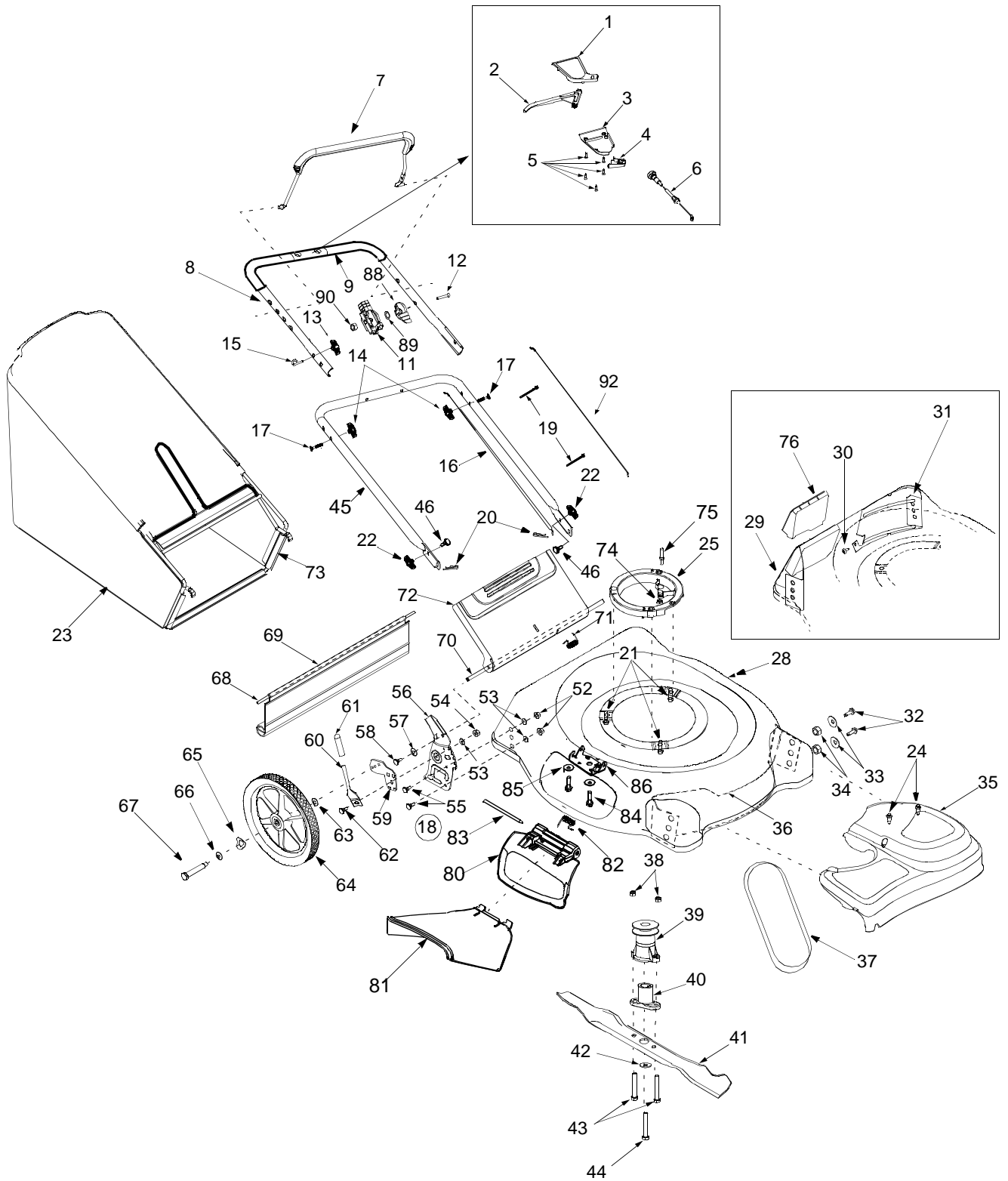


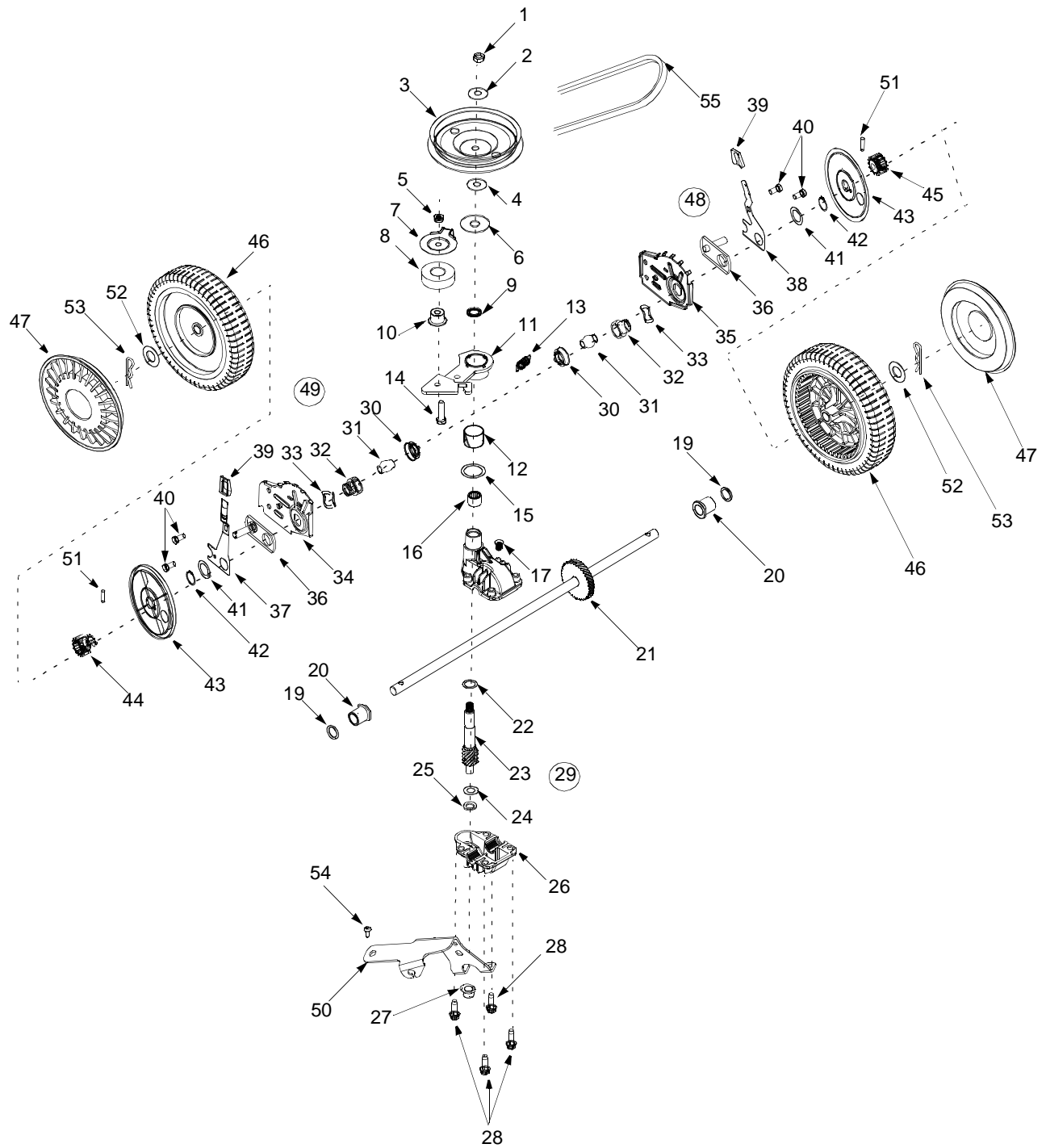
Model Series 560 (401)



Model Series 560 (401)

Ref. No	Part No.	Description	Ref. No	Part No.	Description
1.	731-1057	Upper Drive Cover	44.	710-1257	Hex Screw 3/8-24 x 2.50
2.	731-0620	Drive Lever	45.	749-0907A	Lower Handle
3.	731-1058	Lower Drive Cover	46.	710-0703	Carriage Bolt, 1/4-20 x .75"
4.	731-1059	Mounting Cap	52.	712-0798	Hex Nut 3/8-16
5.	710-1667A	Screw # 10-16 x .75	53.	736-0356	Bell Washer .39 I.D. x 1.38 O.D.
6.	746-0960	Drive Cable	54.	712-3005	Hex Flange Lock Nut 3/8-16
7.	747-0824	Control Lever	55.	710-0896	Hex Scr. w/Washer 1/4-14 x .625
8.	749-0439B	Upper Handle (Incl. Ref. No. 9)	56.	682-3056A	RH Handle Bracket
9.	720-0294	Foam Grip, 9"	—	682-3057A	LH Handle Bracket (Not Shown)
10.	712-0234	Hex Lock Nut, 1/4-20	57.	736-0270	Bell Washer .265 x .75 x .062
11.	646-0876	Throttle Housing w/Choke	58.	710-0599	Hex Screw TT 1/4-20 x .500
12.	710-0605	Oval C-Sunk Screw 1/4-20 x 1.825	59.	17488A	RH Pivot Bar
13.	720-0279	Handle Knob	—	17489A	LH Pivot Bar (Not Shown)
14.	720-0314	Handle Knob	60.	732-0866	Height Adj. Lever
15.	710-1205	Eye Bolt	61.	720-0312	Foam Grip
16.	746-0550	Control Cable, 39"	62.	738-0507B	Shoulder Scr .500 Dia. x .434
17.	710-1174	Carriage Bolt 5/16-18 x 2.0	63.	736-0105	Washer .401 x .870 x .063
18.	682-3058	RH Bracket Ass'y	64.	734-1860	Wheel, 14 x 2
—	682-3059	LH Bracket Ass'y (Not Shown)	65.	736-0182	Spring Washer .50 I.D. x 1.0 O.D.
19.	726-0240	Cable Tie	66.	736-0456	Flat Washer .510 x 1.373 x .04
20.	714-0104	Cotter Pin	67.	738-0481A	Shoulder Screw
21.	710-1007	Self-Tapping Screw	68.	732-0700	Wire
22.	712-0397	Wing Knob	69.	731-1236	Rear Trailing Shield
23.	664-0085	Grass Bag	70.	747-0996	Pivot Rod
24.	7510042824	Screw # 12 x .457	71.	732-0809	Torsion Spring
25.	631-0075	Engine Spacer	72.	782-7599A	Rear Discharge Door
28.	782-0082A	21" Deck	73.	747-0995A	Grasscatcher Frame
29.	782-5004	RH Rear Baffle	74.	712-0271	Hex Nut
30.	710-1017	Screw AB: 1/4-14: .625	75.	711-1293	Screw
31.	782-5003	LH Rear Baffle	76.	782-5007	Plastic Mulching Baffle
32.	710-0216	Hex Screw 3/8-16 x .75	80.	682-7000	Mulching Plug (Hinged)
33.	736-0331	Bell Washer .39 x 1.13 x .062	81.	731-1409	Chute Deflector
34.	712-0798	Hex Nut 3/8-16	82.	732-0731	Torsion Spring
35.	731-1937A	Transmission Cover	83.	747-0710	Hinge Pin
36.	782-5002	Front Baffle	84.	710-0599	Tapp Scr. 1/4-20 x .500
37.	754-0465	V-Belt, 3/8 x 35.68"	85.	736-0270	Bell Washer .265 x .75 x .062
38.	712-0324	Hex Nut 1/4-20	86.	782-7006	Hinged Mtg. Bracket
39.	756-1146	Drive Pulley	87.	746-1110	Throttle Cable
40.	748-0411	Blade Adapter	88.	746-0876	Throttle Lever
41.	742-0741	21" Mulching Blade	89.	736-0501	Curved Spring Washer
42.	736-0452	Flat Washer .516 x 1.5 x .134	90.	712-0324	Hex Lock Nut 1/4-20
43.	710-0606	Hex Screw 1/4-20 x 1.50	92.	746-1110	Throttle Cable

Model Series 560 (401)



Model Series 560 (401)

Ref. No	Part No.	Description	Ref. No	Part No.	Description
1.	712-3025	Hex Jam Nut 5/16-24	29.	618-0298A	Transmission Assembly (Includes Ref. # 1to Ref. #30)
2.	736-0425	Bell Washer .325 x .930 x .045	30.	732-0708	Bearing Retainer
3.	756-1042	Pulley, 3.82 x .313 x .68	31.	741-0604	Bearing Sleeve .50 I.D.
4.	736-0425	Bell Washer .325 x .930 x .045	32.	748-0355	Bearing Support
5.	712-0896	Lock Nut 1/4-28	33.	736-0447	Wave Washer 1.5 x 1.0 x .029
6.	736-0406	Flat Washer .442 x 1.38 x .060	34.	782-0512B	RH Height Adj. Plate
7.	782-7598	Belt Keeper	35.	782-0511A	LH Height Adj. Plate
8.	741-0124	Ball Bearing	36.	682-0509	Pivot Plate Assembly
9.	721-0457	Oil Seal	37.	732-0706	RH Front Lever
10.	750-1050	Flange Spacer	38.	732-0707	LH Front Lever
11.	682-0028	Idler Bracket Assembly	39.	720-0190	Knob
12.	741-0682A	Bearing Sleeve	40.	710-0216	Hex Cap Screw 3/8-16 x .75
13.	732-0849A	Extension Spring	41.	736-0474	Washer DD 1.5" O.D.
14.	710-0299	Hex Cap Screw 1/4-28 x 1.00	42.	716-0102	Snap Ring 1.0 dia.
15.	736-0570	Flat Washer .865 x 1.145 x .030	43.	782-7551	Wheel Dust Cap
16.	741-0699	Needle Bearing .438 x .625 x .500	44.	717-1534	Gear 14T RH FWD
17.	721-0325	Plug 1/4 x .437	45.	717-1533	Gear 14T LH FWD
18.	618-0300A	Upper Housing	46.	734-1983	Wheel, 8x2 Black
19.	721-0329	Oil Seal .500 x .687 x .094	47.	731-1426	Hubcap: Yellow
20.	741-0673	Flange Bearing	48.	682-0512A	RH Height Adj. Complete
21.	611-0105	Output Shaft	49.	682-0511A	LH Height Adj. Complete
22.	736-0520	Flat Washer .504 x .700 x .030	50.	682-0030	Cable Idler Bracket
23.	717-1492	Pinion Shaft 10T	51.	715-0221	Dowel Pin
24.	736-0314	Thrust Washer .375 x .70 x .030	52.	736-3013	Flat Washer 1/2 x 1.00 x .063
25.	736-0569	Thrust Washer .388 x .625 x .062	53.	714-0101	Cotter Pin .08 x 1.42
26.	618-0299A	Lower Housing	54.	738-1002	Screw
27.	741-0672	Flange Bearing .378 x .531 x .370	55.	754-0465	Belt
28.	710-1276	Hex Screw w/Washer 1/4-20 x .750			