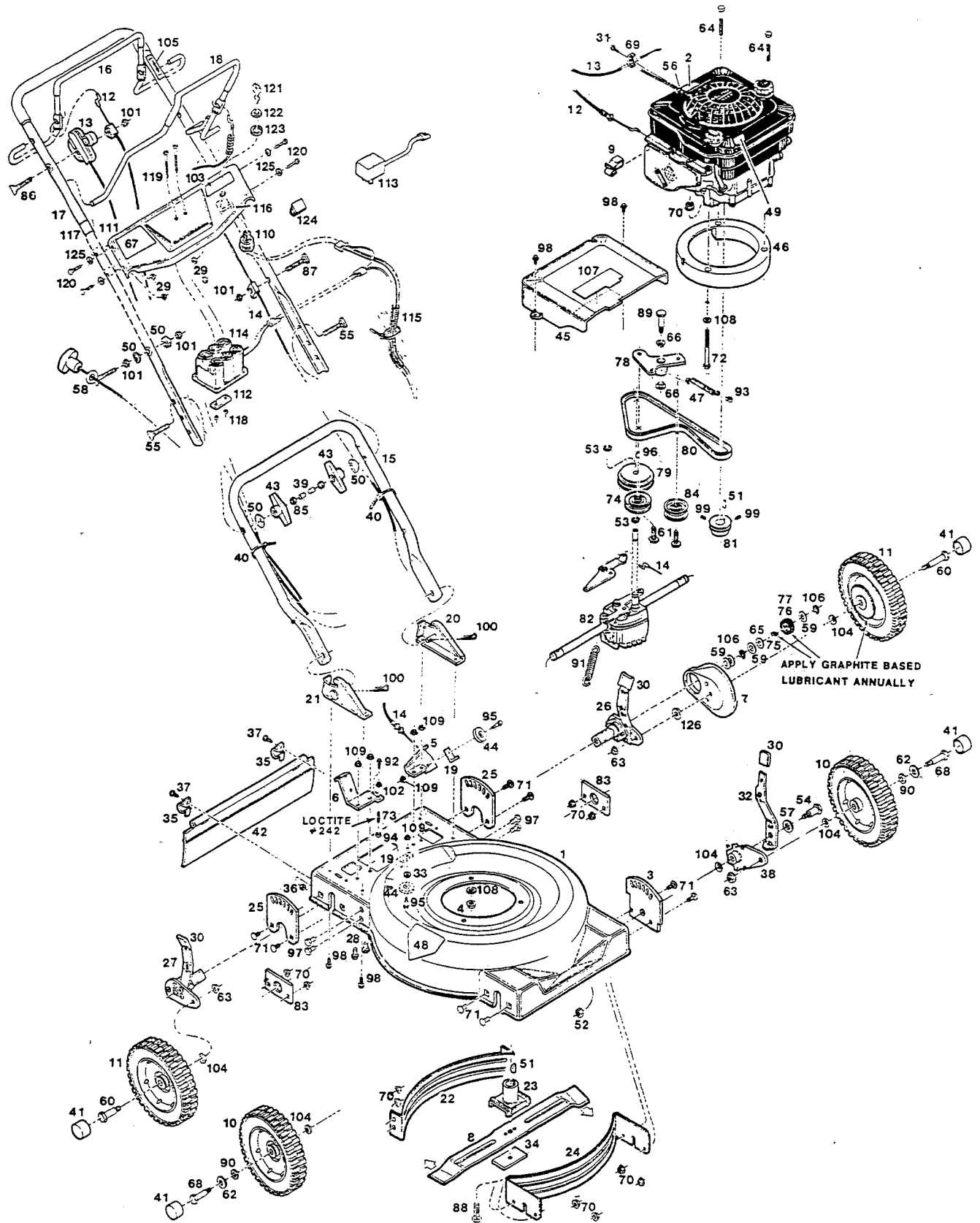


**MODEL 8913K (JCP)  
20" SELF-PROPELLED MULCHING MOWER  
WITH ELECTRIC START**



**MODEL 8913K (JCP)  
20" SELF-PROPELLED MULCHING MOWER  
WITH ELECTRIC START**

Ref. No.	JCPenney Part No.	Supplier Part No.	Description
1	1381-6152	022483	Deck 20" Mulcher
2	1367-9857	001206	Decal - Warning Blade Rotation
3	1381-6160	091850	Plate - Height Adjuster - Front
4	1339-8276	616342	Nut - 5/16-18 Center Lock
5	1381-6178	088674	Bracket - Pulley Mounting
6	1381-6186	088658	Bracket - Trans Pulley
7	1381-6194	022236	Cover - Drive Wheel
8	1367-9345	030189	Blade - 20" Mulcher
9	1367-9816	381442	Clip - Tinnerman
10	1381-6202	041418	Wheel - Front 8"
11	1381-6210	041442	Wheel - Rear 8" w/Gear
12	1367-9352	052209	Cable - Engine/Blade Control
13	1367-9378	052217	Cable - Throttle Control
14	1381-6228	052522	Cable - Drive Engagement
15	1367-9386	072991	Handle - Lower
16	1367-9766	109389	Bail - Engine/Blade Control
17	1381-6236	073197	Handle - Upper
18	1381-6244	022764	Bail - Ground Drive
19	1381-6251	096305	Bracket Cable Retainer
20	1381-6269	088435	Bracket - Handle LH
21	1381-6277	088427	Bracket - Handle RH
22	1381-6285	087080	Baffle - Rear
23	1381-6293	089888	Blade Adapter
24	1381-6301	087288	Baffle - Front
25	1381-6319	088815	Plate - Height Adjuster - Rear
26	1381-6327	091595	Wheel Arm Assembly L.H. Rear
27	1381-6335	088302	Wheel Arm Assembly R.H. Rear
28	1066-3516	457044	Bolt - 1/4-20 x 1/2
29	1076-0007	715334	Nut - #10-24 Keps
30	1367-9782	114462	Tip - Plastic
31	1076-0080	150623	Screw - Hex Slotted #10 x 5/8
32	1381-6350	091835	Lever Height Adjuster - Front
33	1381-6368	158956	Washer - 1/4
34	1076-0163	106005	Washer - Blade
35	1244-0020	106914	Clip - Trailing Shield
36	1324-5204	452318	Nut - #10-24 Hex Nylon Insert
37	1072-7469	458687	Bolt - #10-24 x 1/2
38	1381-6376	091819	Wheel Arm - Front
39	1367-9774	110064	Cap - Plastic Bolt
40	1244-0012	110379	Cable Tie
41	1381-6384	112045	Cap - Hub
42	1381-6392	114421	Trailing Shield - Plastic
43	1373-3993	113589	Knob - Handle
44	1381-6400	112177	Pulley - Drive
45	1381-6418	114108	Cover - Transmission
46	1381-6426	114132	Spacer - Engine
47	1381-6434	135665	Spring - Extension
48	1324-5006	143115	Decal - Warning CPSC
49	1381-6442	148411	Decal - Warning Oil Overfill
50	1072-7089	150201	Washer - Curved 5/16
51	1066-3706	150276	Woodruff Key #6
52	1154-9342	715441	Nut - 3/8-16 Twin Whiz
53	1381-6459	151282	Ring - Transmission - Top
54	1381-6467	163972	Bolt - Shoulder
55	1086-5889	151936	Bolt - Curved Head 5/16-18 x 2-1/4
56	1308-0981	152074	Rope Stop
57	1381-6475	164020	Washer - Hardened
58	1027-1914	152371	Rope Guide
59	1291-6037	152553	Washer - Thrust 1/2
60	1381-6483	154328	Bolt - Wheel, Rear
61	1381-6491	154369	Bolt - 3/8-16 x 1-1/4 Shaved Head
62	1381-6509	156075	Washer - Flat 1/2
63	1380-1428	156406	Nut - Hex 3/8-16 Flange
64	1331-4778	156463	Bolt - Hex 5/16-18 x 2-3/4 Gr. 5

Ref. No.	JCPenney Part No.	Supplier Part No.	Description
65	1381-6517	156638	Washer - Flat 1/2
66	1381-6525	156653	Bearing - Flange Nylon
67	1380-1568	716761	Decal - Electric Start Instr.
68	1324-5022	157420	Bolt - Wheel, Front
69	1367-9824	157552	Clamp - Cable
70	1339-8235	157610	Locknut - Flange 5/16-18
71	1381-6541	158907	Bolt - Carriage 5/16-18 x 5/8
72	1381-6558	163592	Bolt - 5/16-18 x 4 Gr. 5
73	1381-6566	163840	Stud - Short
74	1277-9989	170621	Pulley - Idler V-Groove
75	1381-6574	171041	Dog - Drive
76	1381-6582	171058	Gear - Drive RH
77	1381-6590	171066	Gear - Drive LH
78	1381-6608	171496	Arm - Idler
79	1381-6616	171819	Pulley - 2 Speed
80	1381-6624	171652	V-Belt
81	1381-6632	171660	Sheave - Engine
82	1381-6640	171751	Transmission Assembly
83	1381-6657	179176	Support - Wheel Hub
84	1277-9989	305367	Pulley - Idler Flat
85	1317-7167	310045	Nut - 5/16-18
86	1381-6665	380550	Bolt - Curved Head 1/4-20 x 2-1/4
87	1381-6673	150029	Bolt - Curved Head 1/4 x 1-1/2
88	1381-6681	381624	Bolt - Blade 3/8-24 x 2 Gr. 8
89	1381-6699	381665	Bolt - Shoulder
90	1381-6707	156620	Washer 1/2 x 1
91	1381-6715	381780	Spring - Transmission Return
92	1277-9922	150326	Screw - #10-24 x 1/2 Hex Slot Head
93	1381-6723	381889	Clip - "U" Tinnerman
94	1381-6731	382150	Spacer
95	1381-6749	158683	Bolt - Shoulder 1/4-20
96	1381-6756	446450	Key - Woodruff
97	1381-6764	159780	Bolt - Hex 5/16-18 x 5/8 Flange
98	1324-5261	457499	Bolt - 1/4-20 x 1/2 Thread Forming
99	1381-6772	315093	Screw Set - 5/16-18 x 1/4
100	1066-3375	715011	Hairpin Cotter
101	1066-3607	715037	Nut - 1/4-20 Keps
102	1076-0007	715334	Nut - #10-24 Keps
103	1380-1576	716779	Decal - Danger Elect. Start
104	1277-7462	715607	Washer - Belleville
105	1380-1915	794412	Decal - Drive Control
106	1381-6780	153940	Ring - Transmission - Axle
107	1381-6798	794974	Decal - Heat Reflector
108	1381-6806	158212	Washer - 5/16
109	1302-1951	715078	Nut - 1/4-20 Flange Lock
110	1380-1519	050252	Switch-Ignition
111	1380-1204	022145	Plate - Handle
112	1380-1584	101246	Plate - Reinforcing
113	1302-1084	132571	Battery Charger
114	1380-1527	134601	Battery - 12 volt
115	1381-6814	138743	Wiring Harness
116	1380-1543	144089	Decal - Ignition
117	1381-6822	147322	Decal - Aux. Rope Start
118	1380-1600	151894	Locknut - Hex #8-32
119	1380-1592	151886	Screw-Machine Rd #8 - 32 x 31/4
120	1380-1196	156836	Bolt #10 - 24 x 1-1/8
121	1338-6172	304352	Keys - Ignition
122	1380-1618	310102	Nut - Hex 5/8 - 32
123	1380-1626	311241	Washer - Lockwasher 5/8
124	1379-9176	819714	Clip Wiring - Press-on
125	1380-1402	715136	Washer #10 Flat
126	1381-6830	158469	Washer - 3/8
		188672	Owner's Handbook

- This parts list covers several different mower models; not all of the parts listed may be used on the particular model you are working with.
- When servicing use only **Genuine Factory Replacement Parts (OEM)** that are specifically designed for the particular model that you are working with.
- Parts are right or left hand as viewed from the operator's position.
- Model specifications are subject to change without prior notice.
- **Do not operate** the mower unless all parts are attached and in good working order.
- Lawn mower deck and/or other painted parts differing in color may be substituted without notice.