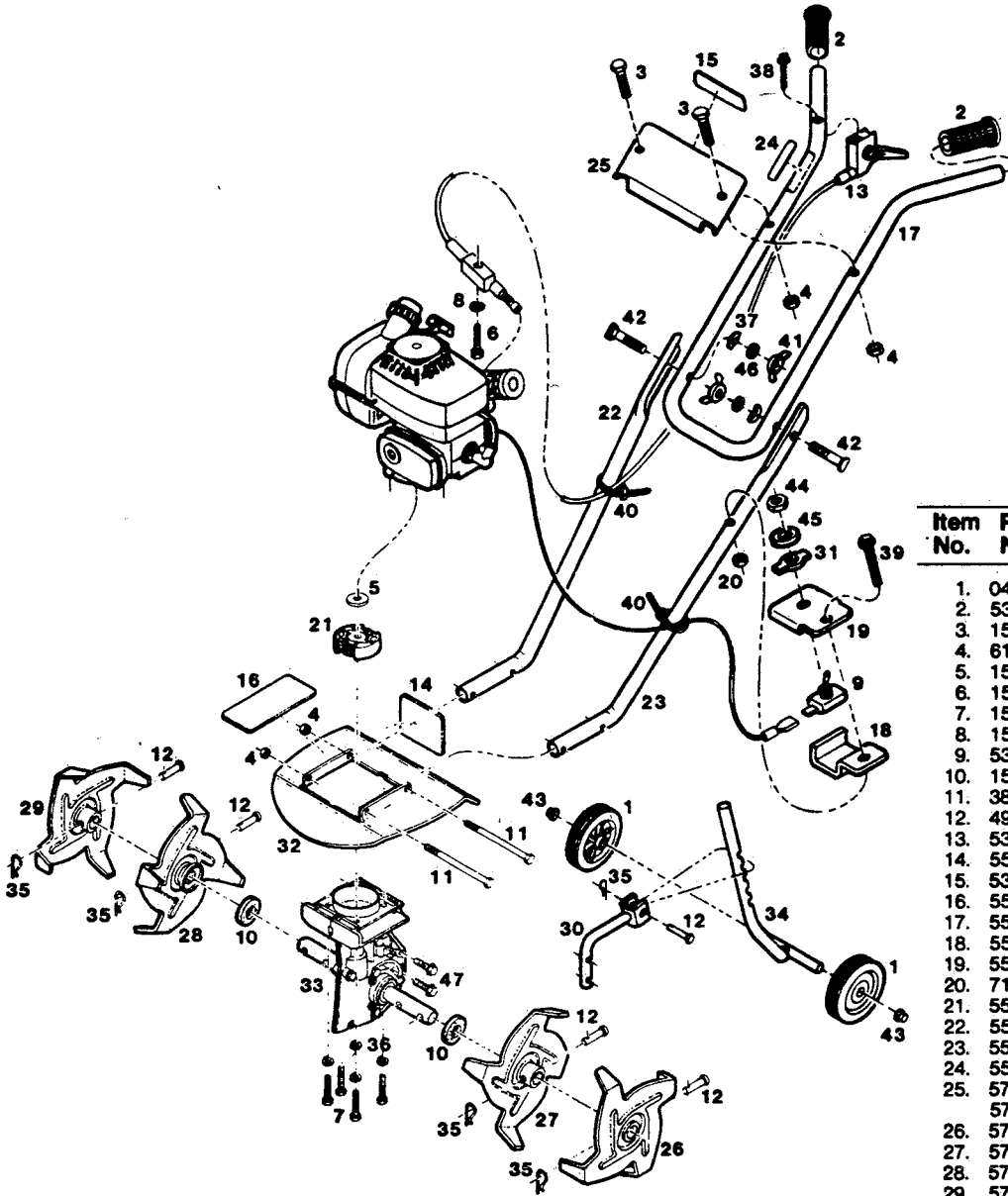


**MODEL A1650K
1.6 H.P. 2 CYCLE MINI CULTIVATOR**



Item No.	Part No.	Description
1.	041723	Wheel
2.	530303	Grip-Hand
3.	152363	Bolt - 1/4-20 X 1 1/4 Carriage
4.	616375	Nut - 1/4-20 Ctr. Lock
5.	157651	Washer - 1/4
6.	157669	Screw - 8-32 X 1 1/4 HX HD
7.	157677	Bolt - 1/4-20 X 1 1/4 HX HD
8.	157685	Washer - 3/16 Flat
9.	530345	Switch - Grounding
10.	157818	Washer - Felt
11.	380345	Bolt - 1/4-20 X 5 HX HD
12.	490037	Pin - 5/16 X 1 1/4 Hard Clevis
13.	530311	Control - Throttle
14.	551655	Decal - Warning
15.	530642	Decal - Throttle Control
16.	552158	Decal - Caution
17.	556688	Handle - Upper
18.	556746	Bracket - Switch Mtg. Lower
19.	556753	Bracket - Switch Mtg. Upper
20.	715334	Nut - 10-24 Keps
21.	556795	Rotor
22.	558486	Handle - Lower RH
23.	558478	Handle - Lower LH
24.	552414	Decal-Hand Placement
25.	574962	Panel - Handle-Red
	575878	Panel-Handle-Green
26.	575910	Tine Assy - Outer LH
27.	575894	Tine Assy - Inner LH
28.	575902	Tine Assy - Inner RH
29.	575928	Tine Assy - Outer RH
30.	592410	Bracket - Depth Bar
31.	530295	Plate - Switch Indicating
32.	575852	Shield - Tine-Red
	575993	Shield - Tine-Green
33.	584441	Gear Case Assy
34.	592402	Depth Rod Assy
35.	715011	Pin - Hair
36.	715094	Washer - 1/4 Split Lock
37.	162172	Washer - Curved
38.	157727	Screw - 10-16 x 1 1/2 HX Washer HD
39.	157719	Screw - 10-24 x 1 1/4 HX Washer HD
40.	110379	Tie - Nylon Cable
41.	150235	Nut - 5/16-18 Wing
42.	157859	Bolt - 5/16-18 X 1 1/4 Curved HD SQ NK
43.	152579	Palnut - 5/16
44.	159251	Nut - Switch
45.	157297	Washer - Switch Lock
46.	715185	Washer - 5/16 Norm
47.	380352	Bolt-hex 1/4-20 x 1 1/4

*Contact engine manufacturer's authorized service dealer for parts and warranty.

- When servicing use only **Genuine Factory Replacement Parts (OEM)** that are specifically designed for the particular model that you are working with.
- Parts are right or left hand as viewed from the operator's position.
- Model specifications are subject to change without prior notice.
- **Do not operate** the tiller unless all parts are attached and in good working order.
- Tiller tine cover, handle and/or other painted parts differing in color may be substituted without notice.