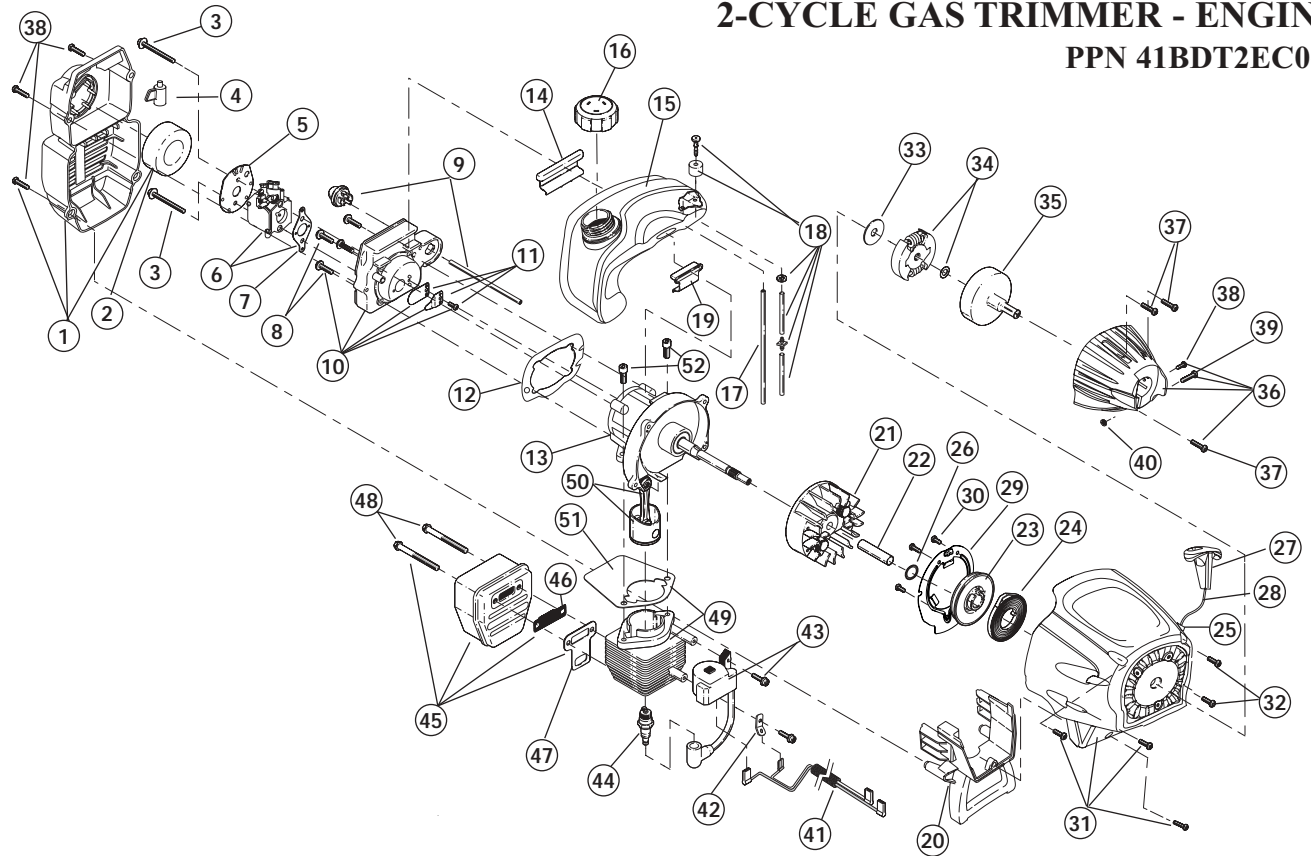


ENGINE PARTS - MODEL TB25ET 2-CYCLE GAS TRIMMER - ENGINE PPN 41BDT2EC063

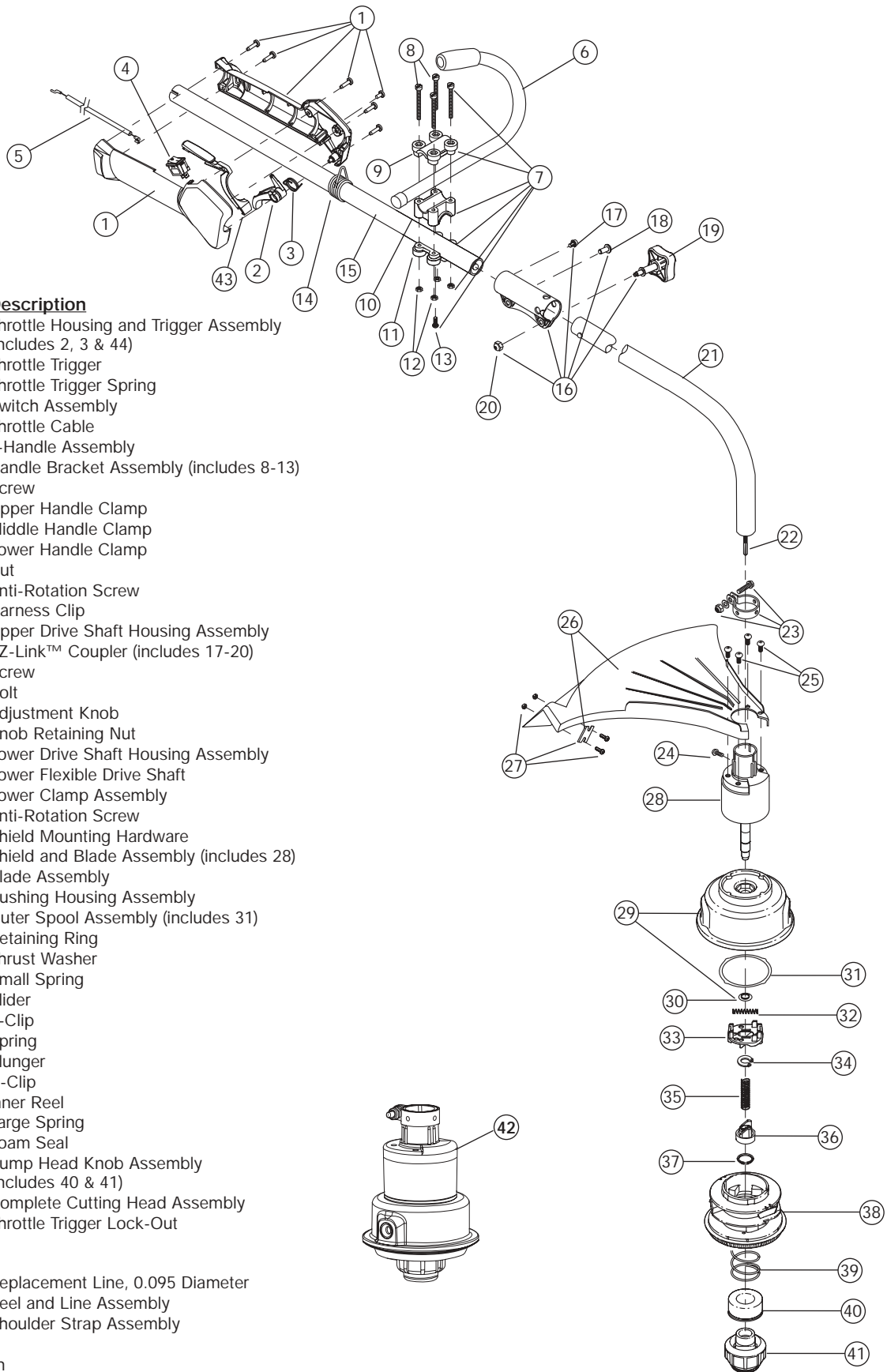


| <u>Item</u> | <u>Part No.</u> | <u>Description</u> | <u>Item</u> | <u>Part No.</u> | <u>Description</u> |
|-------------|-----------------|--|-------------|-----------------|--|
| 1 | 753-1192 | Air Cleaner/Muffler Cover Assembly (includes 2 & 40) | 31 | 753-1203 | Starter Housing Assembly (includes 25-32 & 34) |
| 2 | 791-180350B | Air Cleaner Filter | 32 | 791-181862 | Housing Screw |
| 3 | 791-180351 | Carburetor Mounting Screws | 33 | 791-182368 | Clutch Washer |
| 4 | 753-1193 | Choke Extension | 34 | 791-182369 | Clutch Rotor Assembly |
| 5 | 753-1194 | Choke Plate | 35 | 791-153592 | Clutch Drum Assembly |
| 6 | 753-04338 | Carburetor Assembly (includes 7 & 18) | 36 | 753-1204 | Clutch Cover Assembly (includes 40-43) |
| 7 | 791-610675 | Carburetor Gasket | 37 | 791-181345 | Cover Screw |
| 8 | 791-181860 | Carb Mount Screw | 38 | 791-182519 | Anti-Rotation Screw |
| 9 | 791-181801 | Primer and Hose Assembly | 39 | 753-04003 | Clamping Screw |
| 10 | 753-1196 | Carb Mount Assembly (includes 8 & 11) | 40 | 791-180217 | Clamping Nut |
| 11 | 791-684451 | Reed Assembly | 41 | 791-182798 | Wire Leads and Sleeve |
| 12 | 753-1208 | Carburetor Mount Gasket | 42 | 791-611063 | Ground Tab |
| 13 | 753-04332 | Crank Case Service Assembly (includes 8) | 43 | 753-04337 | Module Assembly |
| 14 | 791-612134 | Rear Mounting Pad | 44 | 791-610311B | Spark Plug |
| 15 | 753-04307 | Fuel Tank Assembly (includes 16-18) | 45 | 791-182066 | Muffler Assembly (includes 49-51) |
| 16 | 753-04084 | Fuel Cap Assembly | 46 | 791-182747 | Spark Arrestor Screen |
| 17 | 791-181168 | Fuel Return Line | 47 | 753-04159 | Exhaust Gasket |
| 18 | 753-04233 | Fuel Line Assembly | 48 | 791-147575 | Muffler Mounting Bolt Assembly |
| 19 | 791-145308 | Front Mounting Pad | 49 | 753-04323 | Cylinder Assembly (includes 54) |
| 20 | 791-182064 | Shroud Extension and Stand | 50 | 753-1207 | Piston and Rod Assembly |
| 21 | 791-182736 | Flywheel Assembly | 51 | 753-1197 | Cylinder Gasket |
| 22 | 791-181065 | Spacer | 52 | 791-182723 | Cylinder Bolt |
| 23 | 753-1199 | Recoil Pulley Assembly | * | 791-180090 | O.E.M. Carburetor Repair Kit |
| 24 | 753-04286 | Recoil Spring | * | 791-180091 | Gasket Diaphragm Repair Kit |
| 25 | 753-1200 | Rope Guide | * | 753-1209 | Piston Ring Set |
| 26 | 791-181247 | Pulley Retainer | * | 753-04334 | Short Block Assembly (includes 8, 13, 46, 51-54) |
| 27 | 791-181079 | Pull Handle | * | 791-181599 | Clutch Springs (Qty. 2) |
| 28 | 791-613103 | Rope | | | |
| 29 | 753-1201 | Pressure Plate Assembly | | | |
| 30 | 753-1202 | Plate Screw | | | |
| | | | * | Items Not Shown | |

BOOM AND TRIMMER PARTS - MODEL TB25ET

2 CYCLE TRIMMER - BOOM

PPN - 41BDT2EC063



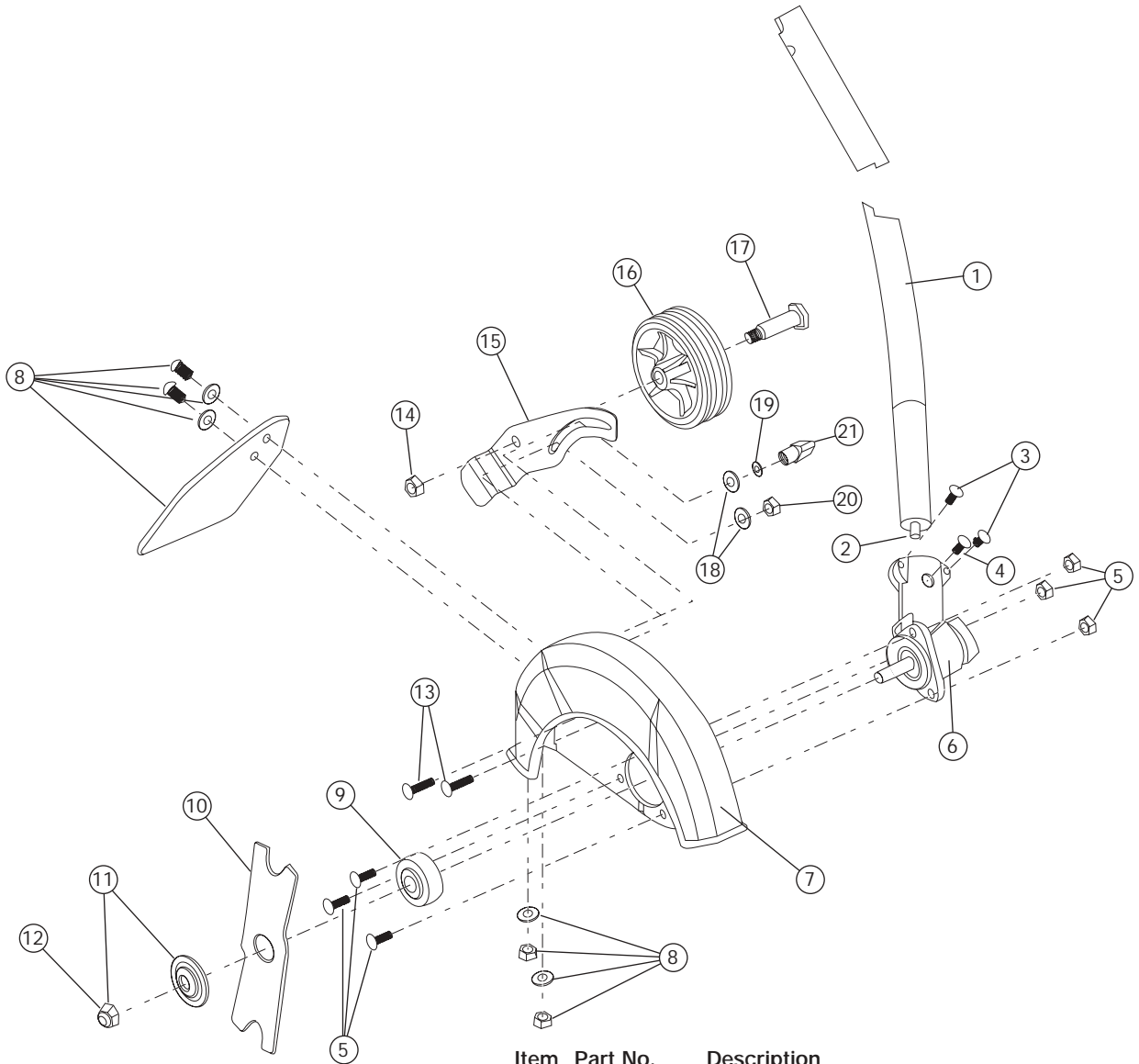
| Item | Part No. | Description |
|------|------------|--|
| 1 | 753-04118 | Throttle Housing and Trigger Assembly (includes 2, 3 & 44) |
| 2 | 753-04119 | Throttle Trigger |
| 3 | 791-182690 | Throttle Trigger Spring |
| 4 | 791-182405 | Switch Assembly |
| 5 | 753-04136 | Throttle Cable |
| 6 | 791-180687 | J-Handle Assembly |
| 7 | 791-683295 | Handle Bracket Assembly (includes 8-13) |
| 8 | 791-181811 | Screw |
| 9 | 791-181812 | Upper Handle Clamp |
| 10 | 791-181813 | Middle Handle Clamp |
| 11 | 791-181814 | Lower Handle Clamp |
| 12 | 791-181815 | Nut |
| 13 | 791-145569 | Anti-Rotation Screw |
| 14 | 791-610327 | Harness Clip |
| 15 | 753-04236 | Upper Drive Shaft Housing Assembly |
| 16 | 753-1190 | EZ-Link™ Coupler (includes 17-20) |
| 17 | 791-182057 | Screw |
| 18 | 791-181617 | Bolt |
| 19 | 791-181981 | Adjustment Knob |
| 20 | 791-181886 | Knob Retaining Nut |
| 21 | 791-180340 | Lower Drive Shaft Housing Assembly |
| 22 | 791-181852 | Lower Flexible Drive Shaft |
| 23 | 791-153597 | Lower Clamp Assembly |
| 24 | 791-145569 | Anti-Rotation Screw |
| 25 | 791-180531 | Shield Mounting Hardware |
| 26 | 791-181659 | Shield and Blade Assembly (includes 28) |
| 27 | 791-181823 | Blade Assembly |
| 28 | 791-181857 | Bushing Housing Assembly |
| 29 | 791-181457 | Outer Spool Assembly (includes 31) |
| 30 | 791-181458 | Retaining Ring |
| 31 | 791-181561 | Thrust Washer |
| 32 | 791-181459 | Small Spring |
| 33 | 753-04257 | Slider |
| 34 | 791-181532 | E-Clip |
| 35 | 791-181531 | Spring |
| 36 | 791-181462 | Plunger |
| 37 | 791-181463 | C-Clip |
| 38 | 791-181464 | Inner Reel |
| 39 | 791-181465 | Large Spring |
| 40 | 791-181467 | Foam Seal |
| 41 | 791-181468 | Bump Head Knob Assembly (includes 40 & 41) |
| 42 | 791-181469 | Complete Cutting Head Assembly |
| 43 | 791-00041 | Throttle Trigger Lock-Out |

Optional Accessories

- * 791-180120 Replacement Line, 0.095 Diameter
- * 753-04218 Reel and Line Assembly
- * 791-682075 Shoulder Strap Assembly

* Items Not Shown

**REPLACEMENT PARTS - MODEL TB25ET
2 CYCLE GAS TRIMMER - ADD-ON
PPN 41BDT2EC063**



| Item | Part No. | Description |
|------|-------------|----------------------------------|
| 1 | 753-04259 | Boom Assembly |
| 2 | 791-181570 | Drive Shaft |
| 3 | 791-182195 | Boom Mounting Hardware |
| 4 | 791-182519 | Anti-Rotation Screw |
| 5 | 753-1217 | Guard Mounting Hardware |
| 6 | 791-182193 | Gearbox Assembly |
| 7 | 753-04260 | Blade Guard |
| 8 | 753-04262 | Deflector w/Hardware |
| 9 | 753-04261 | Spacer |
| 10 | 791-613223B | Blade |
| 11 | 791-180014B | Blade Clamp Washer (includes 12) |
| 12 | 791-613221 | Blade Retainer Nut |
| 13 | 753-04270 | Wheel Bracket Mounting Bolt |
| 14 | 753-04264 | Nut |
| 15 | 753-04265 | Edger Guide |
| 16 | 791-181242 | Wheel |
| 17 | 791-180776 | Shoulder Bolt |
| 18 | 791-182216 | Washer |
| 19 | 791-182215 | Washer |
| 20 | 791-180050 | Nut |
| 21 | 791-182214 | Edger Guide Knob |