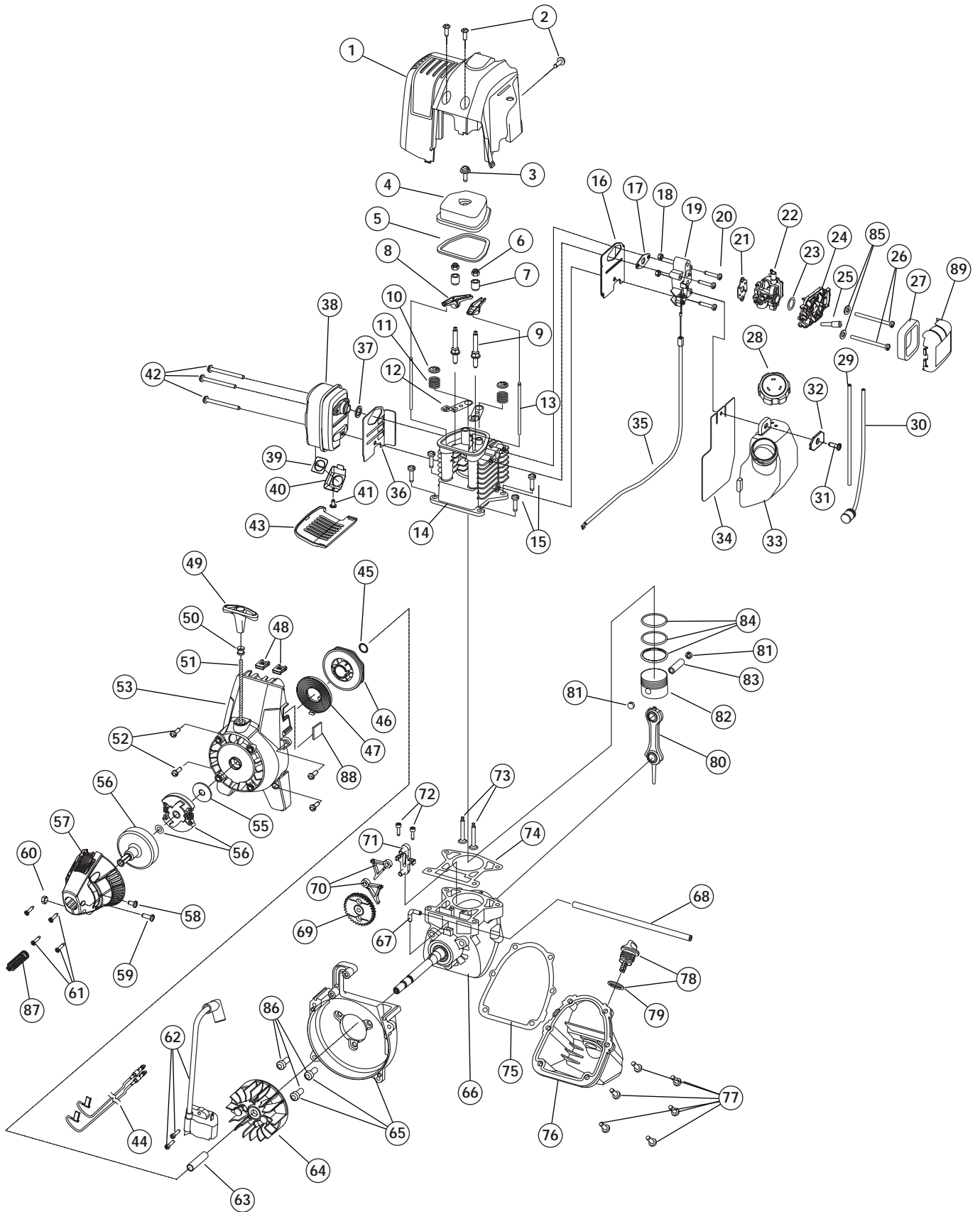


**ENGINE PARTS - MODELS TB425CS
4-CYCLE GAS TRIMMER
PPN - 41ADT42C063**



ENGINE PARTS - MODELS TB425CS

4-CYCLE GAS TRIMMER

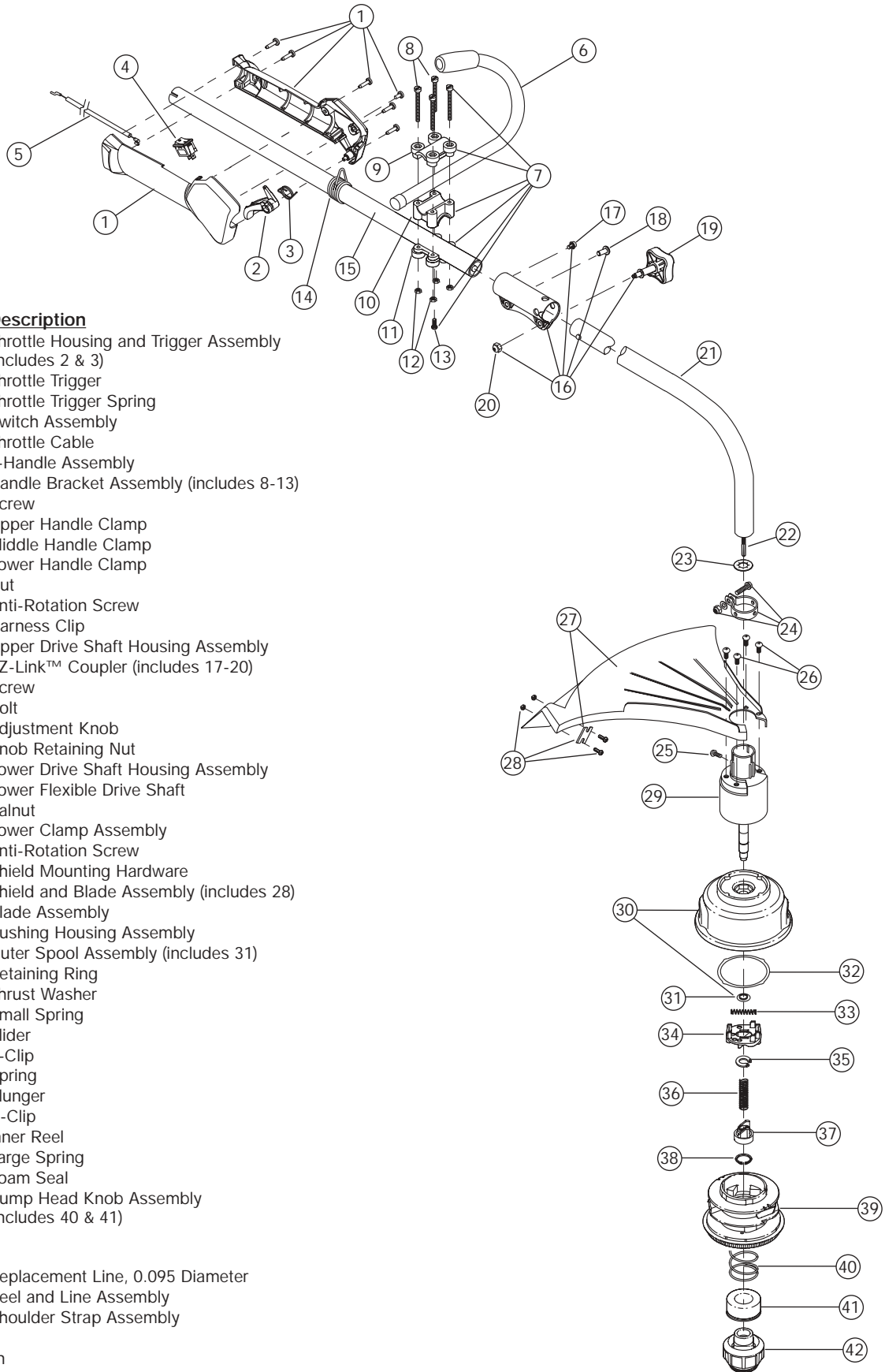
PPN - 41ADT42C063

| <u>Item</u> | <u>Part No.</u> | <u>Description</u> | <u>Item</u> | <u>Part No.</u> | <u>Description</u> |
|-------------|-----------------|---|-------------|-----------------|---|
| 1 | 753-04083 | Engine Cover | 45 | 791-181247 | Palnut |
| 2 | 791-182339 | Engine Cover Screws | 46 | 753-1199 | Recoil Pulley |
| 3 | 791-181025 | Valve Cover Screw | 47 | 753-04286 | Recoil Spring |
| 4 | 791-182098 | Valve Cover | 48 | 791-182366 | Nut Clip |
| 5 | 791-182099 | Valve Cover Gasket | 49 | 791-181079 | Pull Handle |
| 6 | 791-182340 | Rocker Adjustment Nut | 50 | 791-611061 | Rope Guide |
| 7 | 791-182101 | Rocker Arm Pivot | 51 | 791-613103 | Rope |
| 8 | 791-182100 | Rocker Arm | 52 | 791-181020 | Starter Housing Screw |
| 9 | 791-182341 | Rocker Arm Stud | 53 | 753-1237 | Starter Housing Assembly (includes 45-51) |
| 10 | 791-182103 | Valve Spring Retainer | 54 | 791-182368 | Clutch Washer |
| 11 | 791-181038 | Valve Spring | 55 | 753-1238 | Clutch with Spacer |
| 12 | 791-182102 | Push Rod Guide | 56 | 791-153592 | Clutch Drum |
| 13 | 791-181033 | Push Rod | 57 | 753-1239 | Clutch Cover |
| 14 | 791-182745 | Cylinder Assembly (includes 9 & 12) | 58 | 791-145569 | Anti-Rotation Screw |
| 15 | 791-182344 | Cylinder Screw | 59 | 753-1240 | Screw |
| 16 | 791-182345 | Intake Baffle | 60 | 753-1241 | Nut |
| 17 | 791-182749 | Carburetor Mount Gasket | 61 | 791-181345 | Clutch Cover Screw |
| 18 | 791-181034 | Nut | 62 | 753-04298 | Ignition Module with Screws |
| 19 | 791-182347 | Carburetor Mount (includes 18) | 63 | 791-181065 | Spacer |
| 20 | 791-182348 | Carburetor Mount Screw | 64 | 753-04299 | Flywheel |
| 21 | 791-182732 | Carburetor Gasket | 65 | 791-182743 | Shroud Assembly with Screws |
| 22 | 753-04296 | Carburetor with Primer | 66 | 791-182376 | Crankcase Assembly (includes 67 & 68) |
| 23 | 791-181751 | O-Ring, Carburetor | 67 | 791-182375 | 90° Elbow |
| 24 | 753-04305 | Air Filter/Choke Cover Assembly (includes 27) | 68 | 791-182379 | Breather Hose |
| 25 | 791-182097 | Breather Tube | 69 | 791-181015 | Cam Gear |
| 26 | 791-181750 | Air Filter Mounting Screw | 70 | 753-1242 | Cam Follower Set |
| 27 | 791-181757 | Air Filter | 71 | 791-181013 | Cam Bracket |
| 28 | 753-1229 | Fuel Cap | 72 | 791-181012 | Cam Bracket Screw |
| 29 | 791-182352 | Fuel Return Line | 73 | 791-181040 | Valves, Intake and Exhaust |
| 30 | 791-182353 | Fuel Pick-Up Line with Filter | 74 | 791-182374 | Cylinder Gasket |
| 32 | 791-181080 | Screw | 75 | 791-181018 | Oil Pan Gasket |
| 32 | 791-182354 | Washer | 76 | 791-182377 | Oil Pan (includes 75 & 77) |
| 33 | 753-1230 | Fuel Tank Assembly (includes 28-30) | 77 | 791-181020 | Oil Pan Screw |
| 34 | 791-182356 | Fuel Tank Shield | 78 | 753-04041 | Dipstick Assembly |
| 35 | 753-04297 | Throttle Cable | 79 | 791-182290 | O-Ring |
| 36 | 791-182358 | Muffler Baffle | 80 | 791-181009 | Connecting Rod |
| 37 | 791-181048 | Muffler Gasket | 81 | 791-181008 | Wrist Pin Button |
| 38 | 791-182359 | Muffler (includes 37, 39-41) | 82 | 753-1243 | Piston |
| 39 | 791-180890 | Spark Arrestor Screen | 83 | 791-181006 | Wrist Pin |
| 40 | 791-181045 | Screen Cover | 84 | 791-182295 | Piston Ring Set |
| 41 | 791-181046 | Screw | 85 | 791-182409 | Washer |
| 42 | 791-182361 | Muffler Mounting Screw | 86 | 791-181861 | Shroud Screw |
| 43 | 753-04092 | Muffler Cover | 87 | 791-612468 | Compression Spring |
| 44 | 791-182804 | Switch Wire Assembly | 88 | 791-182537 | Grommet |
| | | | 89 | 753-04316 | Air Cleaner Cover |
| | | | * | 791-180852B | Spark Plug |
| | | | * | 753-1245 | Short Block Assembly (includes 3-14, 65-84) |
| | | | * | 791-180142 | Starter Pawl Repair Kit |
| | | | * | 791-182156 | Carburetor Repair Kit |
| | | | * | 753-1248 | Gasket Diaphragm Repair Kit |
| | | | * | | Parts not shown |

BOOM AND TRIMMER PARTS - MODEL TB425CS

4-CYCLE GAS TRIMMER

PPN - 41ADT42C063



| Item | Part No. | Description |
|------|------------|--|
| 1 | 753-04234 | Throttle Housing and Trigger Assembly (includes 2 & 3) |
| 2 | 753-04119 | Throttle Trigger |
| 3 | 791-182690 | Throttle Trigger Spring |
| 4 | 791-182405 | Switch Assembly |
| 5 | 753-04297 | Throttle Cable |
| 6 | 791-180687 | J-Handle Assembly |
| 7 | 791-683295 | Handle Bracket Assembly (includes 8-13) |
| 8 | 791-181811 | Screw |
| 9 | 791-181812 | Upper Handle Clamp |
| 10 | 791-181813 | Middle Handle Clamp |
| 11 | 791-181814 | Lower Handle Clamp |
| 12 | 791-181815 | Nut |
| 13 | 791-145569 | Anti-Rotation Screw |
| 14 | 791-610327 | Harness Clip |
| 15 | 753-1247 | Upper Drive Shaft Housing Assembly |
| 16 | 753-1190 | EZ-Link™ Coupler (includes 17-20) |
| 17 | 791-182057 | Screw |
| 18 | 791-181617 | Bolt |
| 19 | 791-181981 | Adjustment Knob |
| 20 | 791-181886 | Knob Retaining Nut |
| 21 | 753-04304 | Lower Drive Shaft Housing Assembly |
| 22 | 791-181852 | Lower Flexible Drive Shaft |
| 23 | 791-181560 | Palnut |
| 24 | 791-153597 | Lower Clamp Assembly |
| 25 | 791-145569 | Anti-Rotation Screw |
| 26 | 791-180531 | Shield Mounting Hardware |
| 27 | 791-181659 | Shield and Blade Assembly (includes 28) |
| 28 | 791-181823 | Blade Assembly |
| 29 | 791-181857 | Bushing Housing Assembly |
| 30 | 791-181457 | Outer Spool Assembly (includes 31) |
| 31 | 791-181458 | Retaining Ring |
| 32 | 791-181561 | Thrust Washer |
| 33 | 791-181459 | Small Spring |
| 34 | 791-181461 | Slider |
| 35 | 791-181532 | E-Clip |
| 36 | 791-181531 | Spring |
| 37 | 791-181462 | Plunger |
| 38 | 791-181463 | C-Clip |
| 39 | 791-181464 | Inner Reel |
| 40 | 791-181465 | Large Spring |
| 41 | 791-181467 | Foam Seal |
| 42 | 791-181468 | Bump Head Knob Assembly (includes 40 & 41) |

Optional Accessories

- * 791-180120 Replacement Line, 0.095 Diameter
- * 753-04218 Reel and Line Assembly
- * 791-682075 Shoulder Strap Assembly

* Items Not Shown