

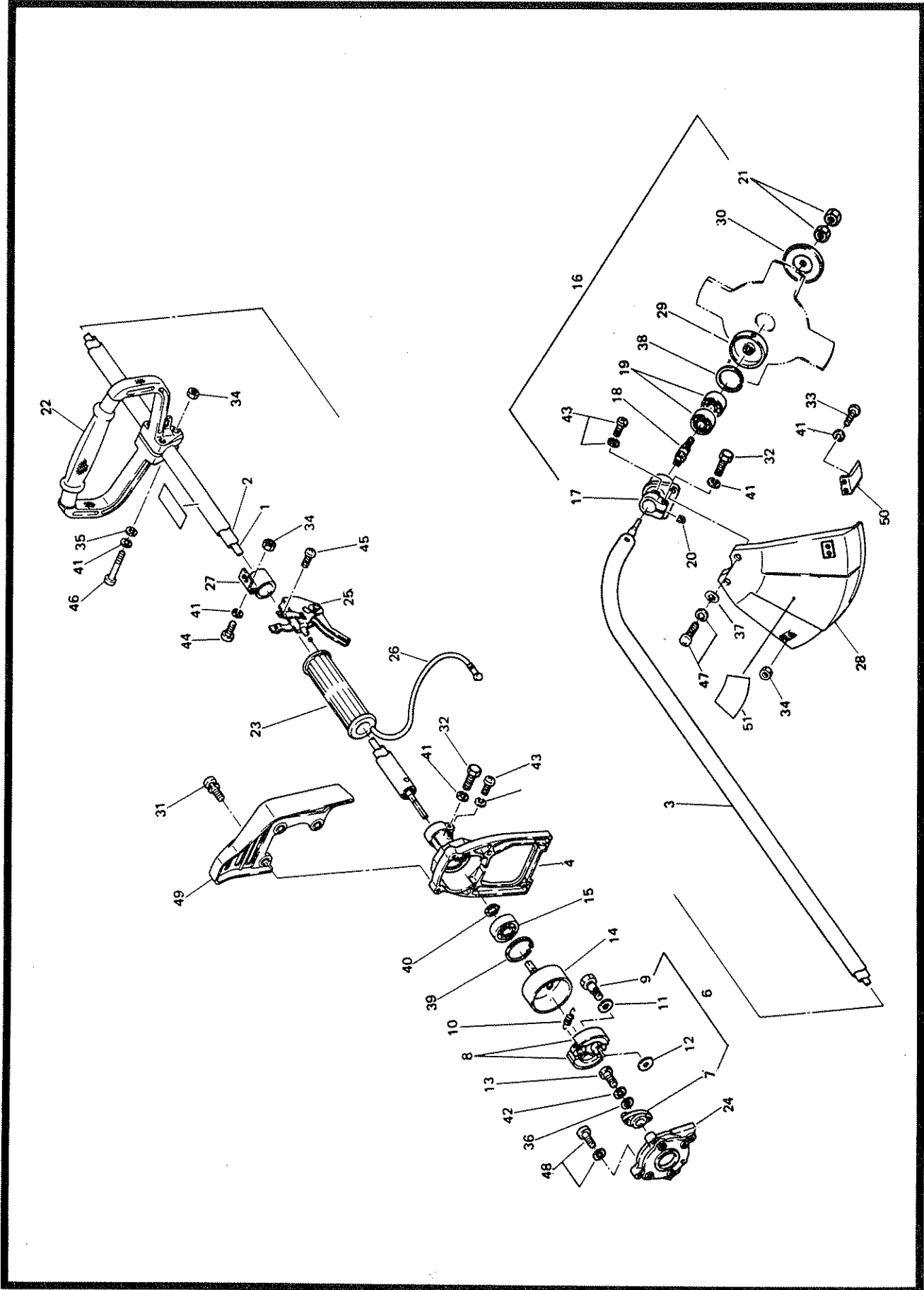


Primo Carb.

**GRASS TRIMMER/
BRUSH CUTTER**

Model NB23T

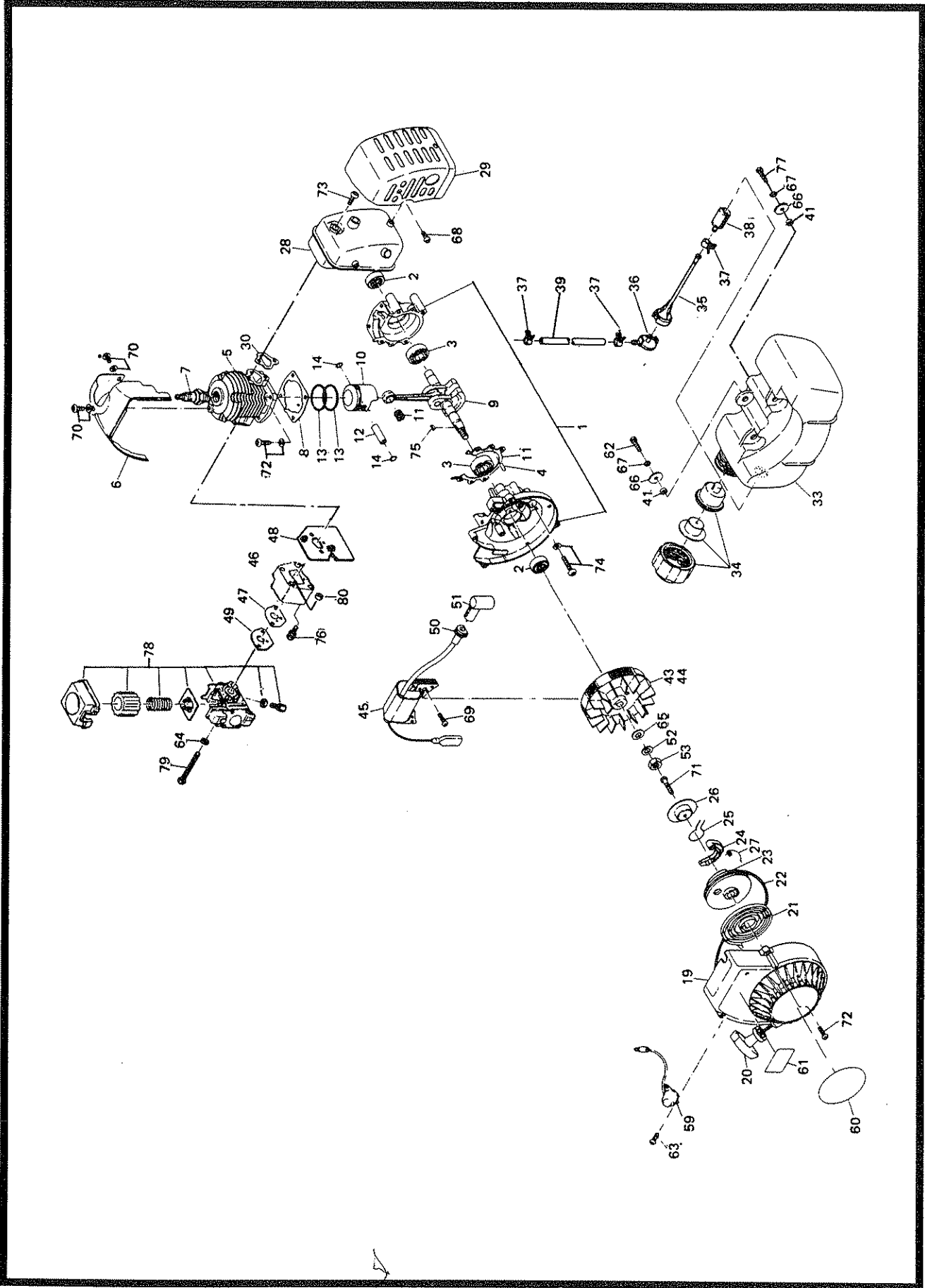
PARTS MANUAL



Machine body

NB23T

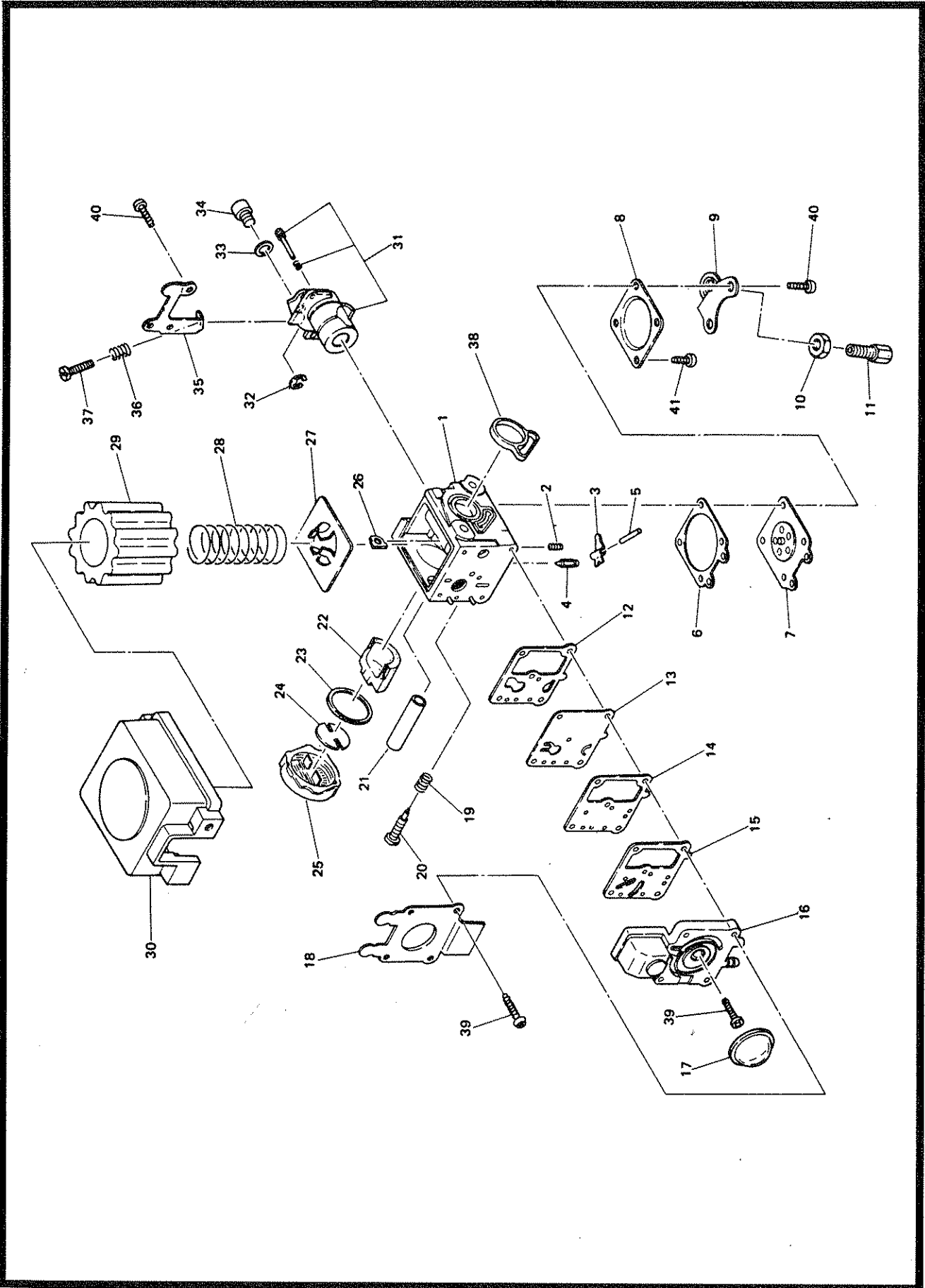
Ref. No.	Mfg.'s No.	Part Name	Our Part No.	Qty.	Ref. No.	Mfg.'s No.	Part Name	Our Part No.	Qty.
1	NB23F-1050	Flexible shaft complete	1684	1	40	00315-1200-0	Snap ring (outer)	1398	1
2	NB16F-1051	Liner complete	1667	1	41	00320-0500-0	Spring washer (M5)	1286	6
3	NB16F-1101	Pipe case	1668	1	42	00320-0600-0	Spring washer (M6)	1294	1
4	NB16F-1111/1C	Pipe case holder	1669	1	43	00110-0510-0	Bolt assembly (M5×10)	3149	2
6	NB23-2051A	Clutch ass'y (incl. 7-12)	1135	1	44	00431-0516-0	Screw (pan head) (M5×16)	1074	1
7	NB02A-201A	Holder	1662	1	45	00431-0518-0	Screw (pan head) (M5×18)	1707	1
8	NB26-2102	Clutch shoe	3136	2	46	00431-0535-0	Screw (pan head) (M5×35)	3150	3
9	NB26-2103	Clutch bolt	3137	2	47	00435-0620-0	Screw (pan head) (M6×20)	1711	2
10	NB25-2104A	Spring	3305	1	48	EC02-8516	Plus & minus screw assembly SW (M5×16)	3152	1
11	NB02A-206	Washer (A)	1143	2	49	NB16F-5053	Spark plug guard	3153	1
12	NB02A-207	Washer (B)	1144	2	50	NB16F-8103	Cutter	3154	1
13	NB02A-205	Holder clamping bolt	1147	1	51	NB16F-9126	Label (cord cutter)	8140	1
14	NB16F-2050D	Clutch drum complete	1671	1					
15	NB25-2115	Ball bearing	1688	1					
16	NB23F-0301	Head case ass'y (incl. 17-21, 29, 30, 32, 38, 41, 43)	1683	1					
17	NB16F-3101/1	Head case	1672	1					
18	NB23F-3102B	Cutter shaft	1678	1					
19	NB16F-3110	Ball bearing	1674	1					
20	NB25-1114	Gasket (fiber)	1687	1					
21	00218-0800-0	Lock nut	1702	2					
22	NB16F-4105B	Loop handle	3141	1					
23	NB16F-4102B	Grip	1676	1					
24	NB25-5103	Locating plate	3143	1					
25	NB16F-5001B	Throttle lever assembly	1677	1					
26	NB16F-5050A	Throttle wire complete	1678	1					
27	NB16F-7111B	Hanger	1679	1					
28	NB16F-8120	Safety cover	3146	1					
29	NB16F-8101B	Disk washer (upper)	1680	1					
30	NB16F-8102A	Disk washer (lower)	1681	1					
31	00118-0630-0	Bolt ass'y (M6×30)	3148	4					
32	00166-0525-0	Bolt (M5×25)	1701	2					
33	00431-0512-0	Screw (pan head) (M5×12)	1442	2					
34	00227-0500-0	Nut (M5)	1703	6					
35	00310-0500-0	Washer (M5)	1183	3					
36	00310-0600-0	Washer (M6)	1184	1					
37	00312-0600-0	Washer (M6)	1395	2					
38	00314-3000-0	Snap ring (inner)	1188	1					
39	00314-3200-0	Snap ring (inner)	1189	1					



Engine body

NB23T

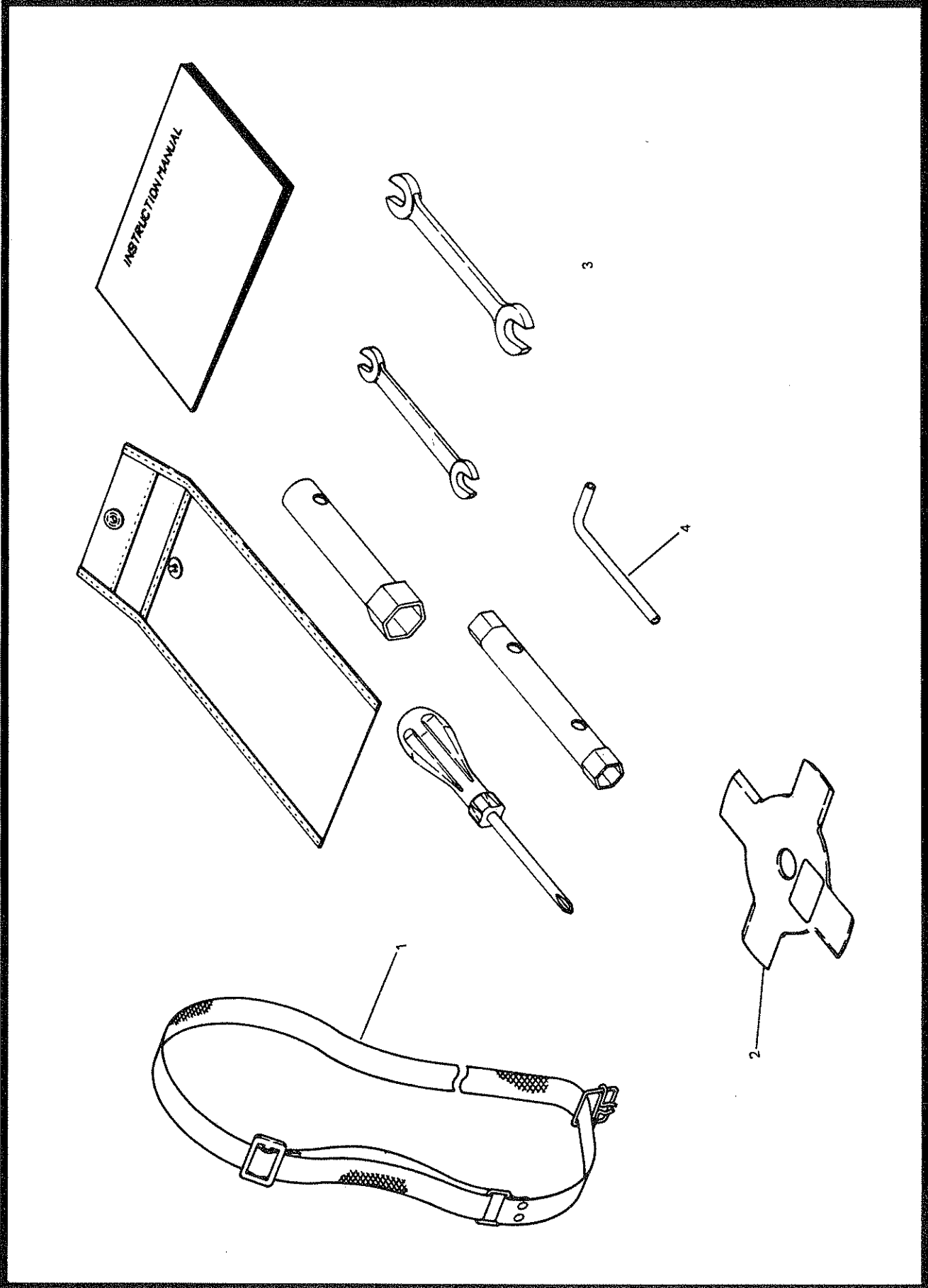
Ref. No.	Mfg.'s No.	Part Name	Our Part No.	Qty.	Ref. No.	Mfg.'s No.	Part Name	Our Part No.	Qty.
1	EC02-006	Crank case complete (incl. 2-4)	1001	1	47	EC02-3112	Gasket spacer	3122	1
2	0440 12999 1	Oil seal (EC03-111ATc12227)	1002	2	48	EC02-3113	Heat insulator packing (cylinder)	8131	1
3	0600 12992 0	Ball bearing (EC02-130 6003 C3)	1003	2	49	EC02-6707	Spacer	3123	1
4	EC02-120A	Crank case packing	1004	1	50	0241 05998 6	Grommet (EC02-705E)	8054	1
5	EC02-110J	Cylinder	3301	1	51	EC02-090B	Plug cap complete	1051	1
6	EC02-501E-G	Cylinder cover	1649	1	52	0203 08999 0	Spring washer (left) (K13-108)	1440	1
7	0650 14981 0	Spark plug	1007	1	53	0170 08996 0	Nut (left) (K12-108)	1278	1
8	EC02-121B	Cylinder packing	1008	1	56	EC02-312A	Heat deflector (incl. 62)	1645	1
9	EC02-088B	Crank shaft complete	8153	1	57	EC02-323A	Heat deflector packing (carburetor side)	1647	1
10	EC02-221E	Piston	1011	1	58	EC02-324A	Heat deflector packing (cylinder side)	1648	1
11	0610 08999 0	Needle bearing (EC02-231)	1012	1	59	EC04-0713B	Stop button	8155	1
12	EC02F-2033	Piston pin	8154	1	60	NB23F-9132	Label (NB23S)	3302	1
13	TG02-207A	Piston ring	1014	2	61	EC02-912	Label (caution)	1653	1
14	0565 07999 0	Clip (EC02-220)	1015	2	62	00170 0512 0	Bolt (cross-recessed) M5×12	1425	1
19	EC02-0598AG	Recoil starter compl. (incl. 16-23, 62)	1640	1	63	EC02-7406	Plus & minus screw	8156	2
20	A57200100001	Starter knob	1018	1	64	00310 0400 0	Washer (M5)	1113	2
21	A60002600000	Spiral spring	1020	1	65	00310 0800 0	Washer (M8)	1428	1
22	A57100890000	Starter rope	1021	1	66	00312 0500 0	Washer (M5)	1429	3
23	A54102600100	Reel	1721	1	67	00320 0500 0	Spring washer (M5)	1286	13
24	A55002610000	Ratchet	1023	1	68	0140 05996 0	Screw (M5×6)	3306	3
25	A60102600000	Friction spring	1024	1	69	EC02-9420	Plus & minus screw assembly SW•W (M4×18)	3307	2
26	A56002600110	Friction plate	1025	1	70	EC02G-8508	Plus & minus screw ass'y W (M5×8)	8158	2
27	A60503210000	Return spring	1605	1	71	00431 0512 0	Screw (M5×12)	1442	1
28	EC02-0306-TA	Muffler assembly	1644	1	72	EC02-8516	Plus & minus screw (M5×16)	3308	7
29	EC02-3004-SA	Muffler cover	1654	1	73	0119 05 9950	Screw (M5×16 S45C)	1223	2
30	EC02-315B	Muffler gasket	1646	1	74	EC02-8525	Plus & minus screw ass'y SW (M5×25)	8160	4
33	EC02-6001	Fuel tank	1655	1	75	00532 0310 0	Woodruff key screw ass'y SW	3309	1
34	EC02-0669C	Fuel tank cap complete	1718	1	76	EC02-9522	Plus & minus screw ass'y SW•W (M5×22)	8134	2
35	EC03F-6101A	Rubber tube	3111	1	77	00170 0516 0	Bolt (cross recessed) (M5×16)	1425	2
36	EC03F-6130	Connector (fuel)	3113	1	78	EC02-0683	Carburetor compl.	8104	1
37	EC01A-6070	Hose clamp	3114	3	79	EC02-7450	Plus & minus screw ass'y	8133	2
38	EC03F-6120	Filter	3112	1	80	00217 0400 0	Nut M4	8135	2
39	EC02-6109	Fuel pipe	3115	1	81	EC02-7516	Plus & minus screw	3310	2
41	0230 06999 1	Spacer (EC02-615)	1699	3					
43	EC02-0799A	Magneto compl. (incl. 44,45)	8102	1					
44	3M-42767	Flywheel	8136	1					
45	4M-50466	Ignition coil	8053	1					
46	EC02-6415	Heat insulator	8132	1					



Carburetor

NB23T

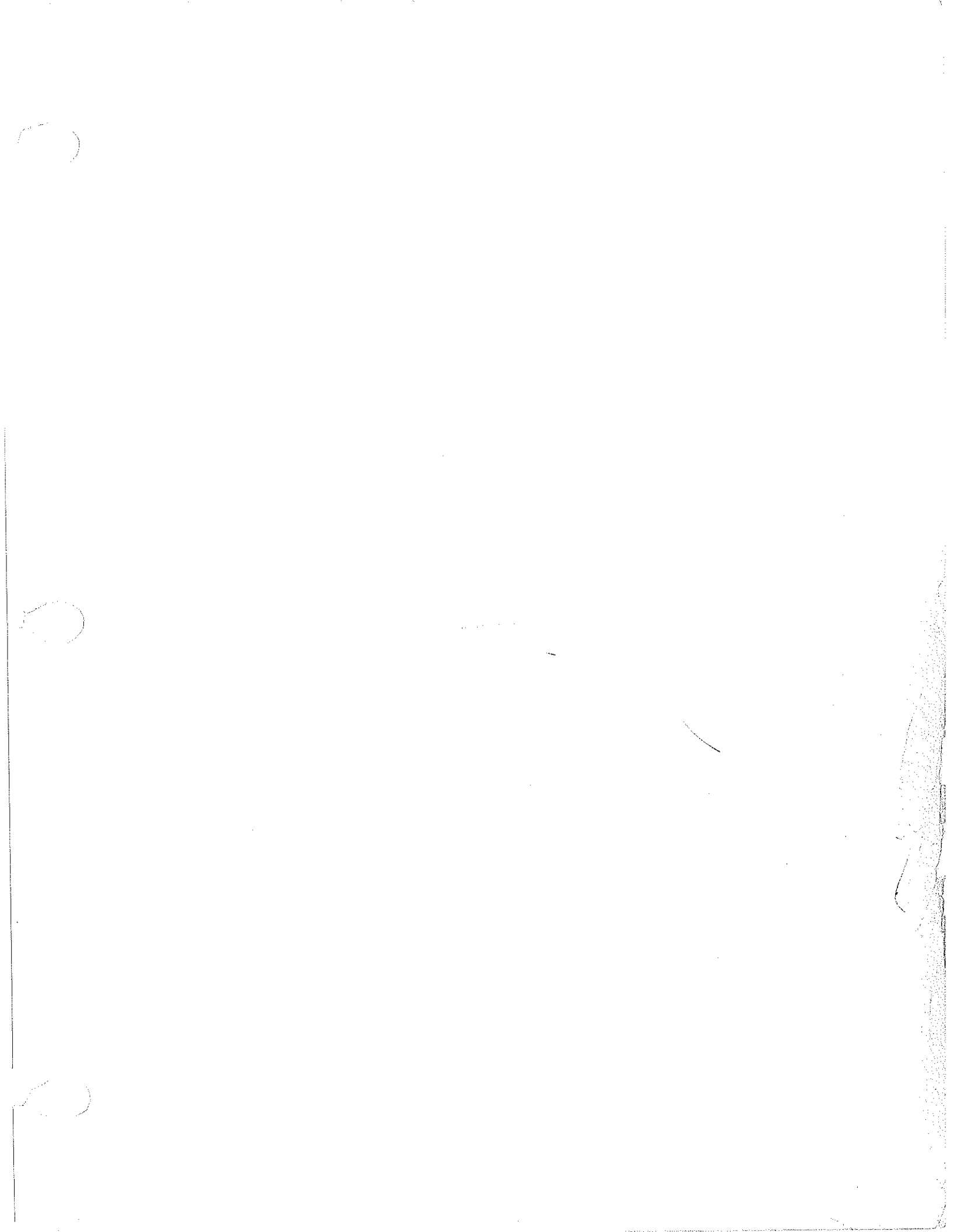
Ref. No.	Mfg.'s No.	Part Name	Our Part No.	Qty.	Ref. No.	Mfg.'s No.	Part Name	Our Part No.	Qty.
1	EC02-0683	Carburetor complete (incl. 2-4)	8104	1	39	96-295	Screw pump cover	3172	5
2	98-189	Spring metering lever	3177	1	40	96-316	Screw	3175	4
3	166-48	Lever metering	3193	1	41	96-296	Screw metering cover	3173	2
4	82-67	Valve inlet needle	3165	1	42		Carburetor repair kit	3207	
5	144-77	Pin metering lever	3189	1	43		Gasket kit	3208	
6	92-146	Gasket metering diaphragm	3166	1					
7	95-526	Diaphragm ass'y metering	3171	1					
8	21-158	Cover metering diaphragm	3206	1					
9	167-86	Bracket cable	3198	1					
10	134-57	Nut cable adj.	3126	1					
11	96-304	Screw cable adj.	3120	1					
12	92-223	Gasket pump	3167	1					
13	95-88	Diaphragm pump	3170	1					
14	157-275	Plate pump	3192	1					
15	92-250	Gasket plate	3169	1					
16	21-790	Cover ass'y pump	3160	1					
17	188-11	Primer pump	3197	1					
18	167-88	Bracket primer pump	3194	1					
19	98-438	Spring high speed needle	3179	1					
20	102-328	Needle high speed	3181	1					
21	122-157	Sleeve-mounting	8107	2					
22	125-53	Filter wick	8108	1					
23	92-242	Gasket intake cap	8109	1					
24	157-292	Plate wick	8110	1					
25	25-71	Cap intake	8111	1					
26	157-263	Plate mounting sleeve	8112	2					
27	157-250	Plate cleaner	3119	1					
28	98-478	Spring filter 8113	3304	1					
29	125-50	Filter air	3117	1					
30	21-419	Cover air cleaner	3116	1					
31	34-525	Valve ass'y throttle	8121	1					
32	16-71	Ring spring retaining	8115	1					
33	136-90	Washer	8116	1					
34	52-18	Swivel	8117	1					
35	167-94	Bracket idle screw	8118	1					
36	98-221	Spring idle adj.	3178	1					
37	96-314	Screw idle adj.	3311	1					
38	16-101	Ring packing	8120	1					





MEMO

A large, empty rectangular box with a thick black border, intended for writing the memo's content.



Now
Now

NB 26-5055

Carswell Import & Marketing Associates, Inc./Carswell Distributing Company

3750 N. Liberty Street, P.O. Box 4193
WINSTON-SALEM, NORTH CAROLINA 27115