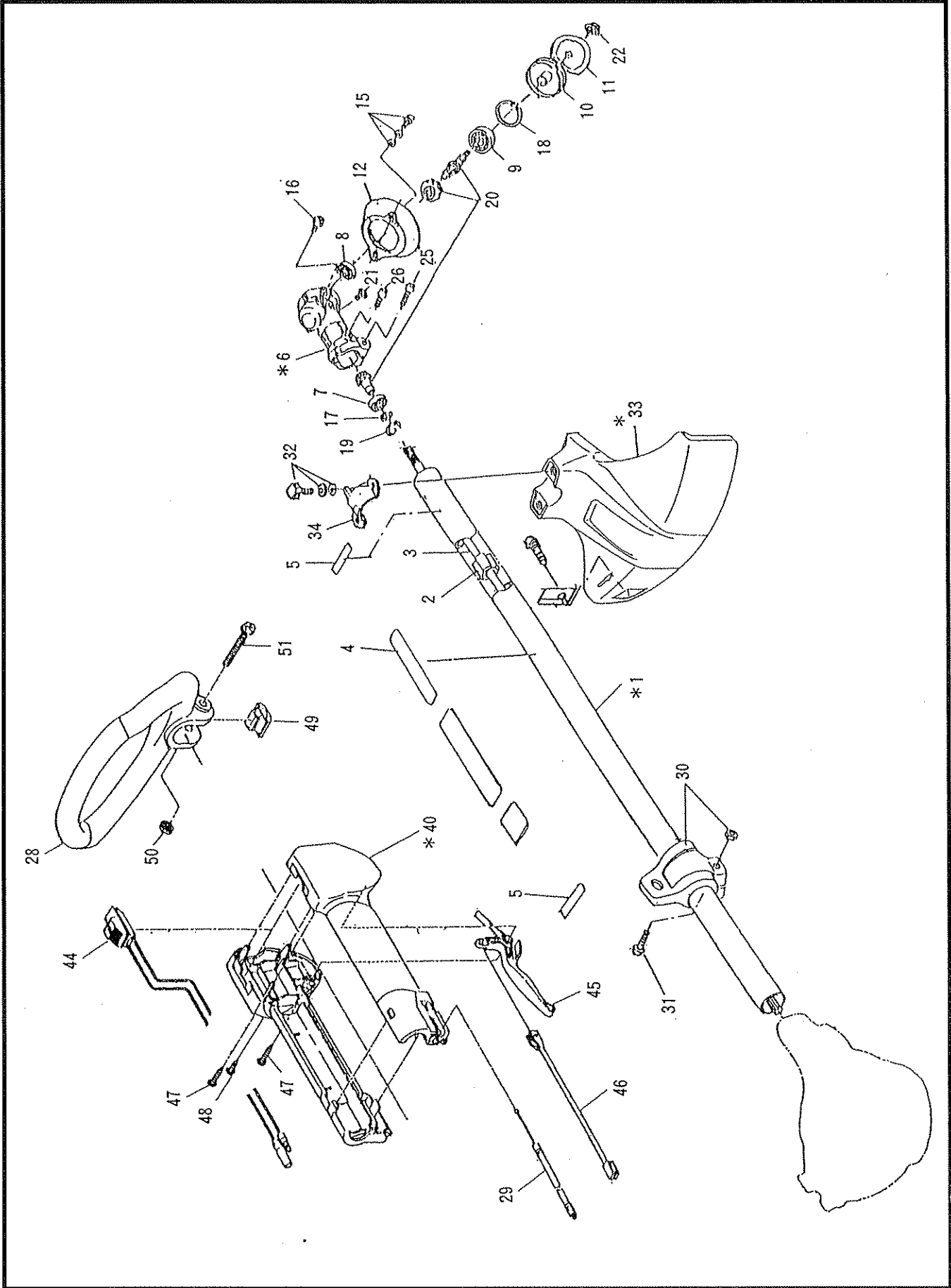




**BRUSH CUTTER**

**Model NB252**

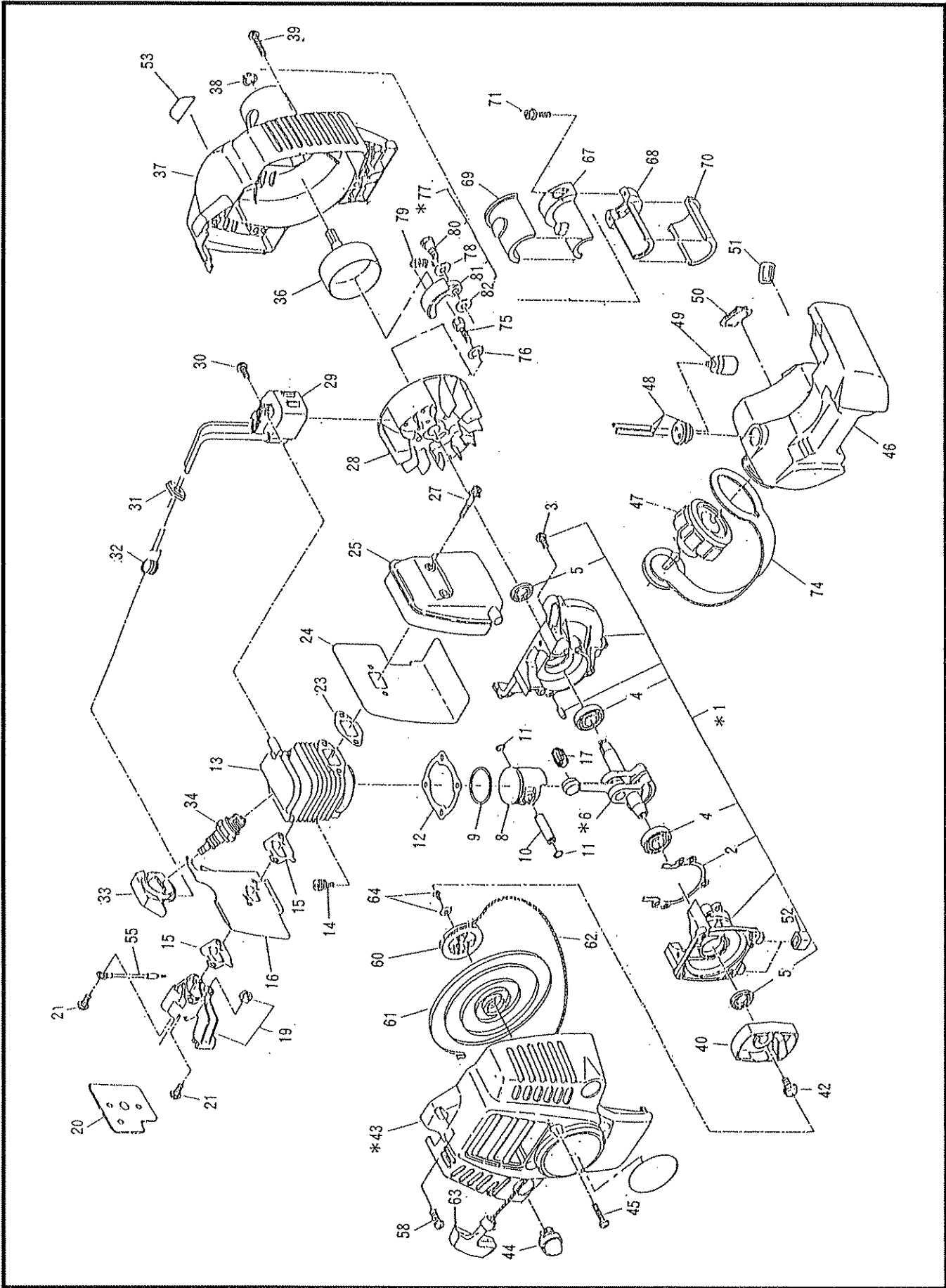
**PARTS MANUAL**



# Machine Body

NB252

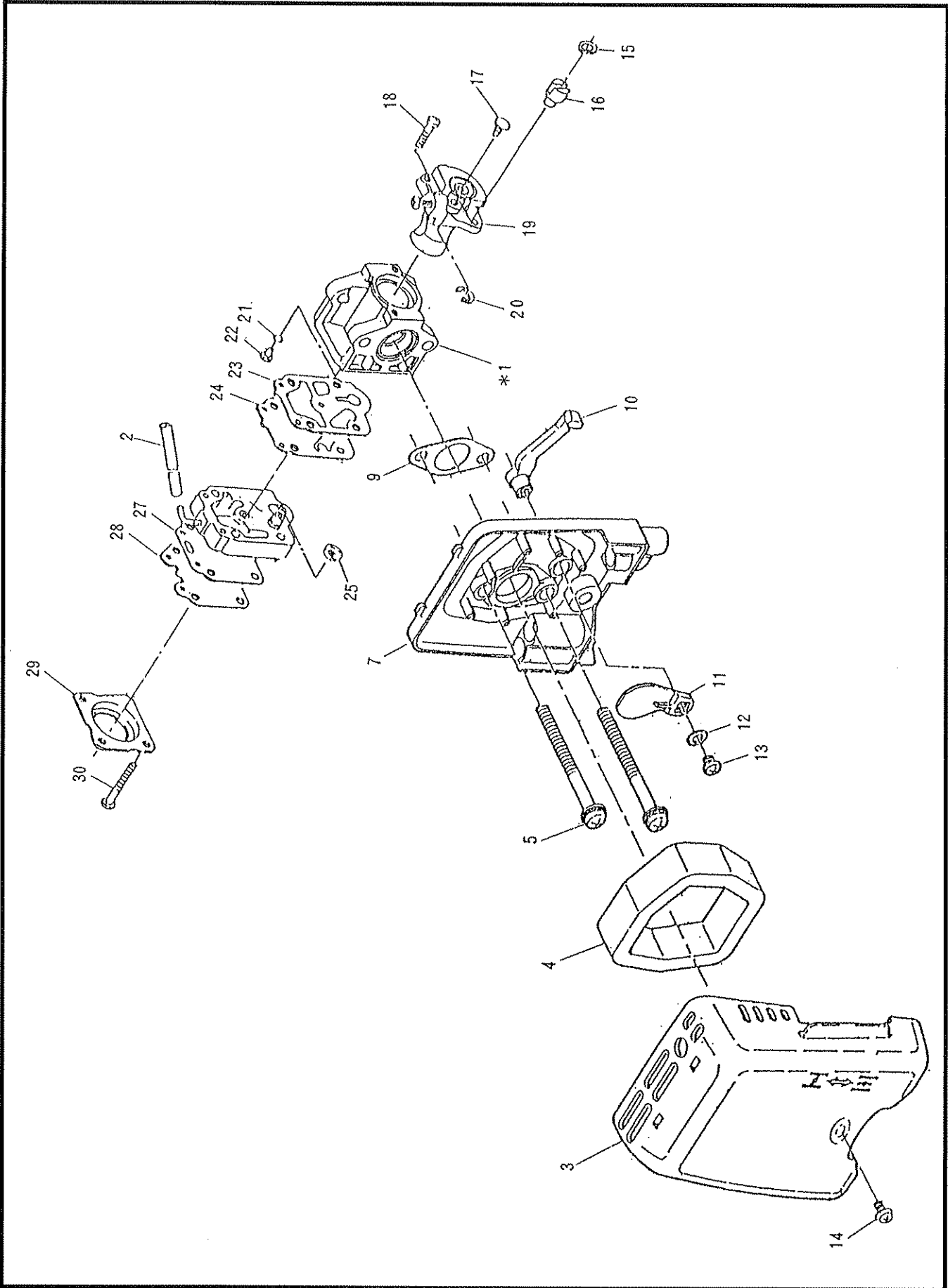
Ref. No.	Mfg.'s No.	Part Name	Our Part No.	Qty.	Ref. No.	Mfg.'s No.	Part Name	Our Part No.	Qty.
1	621 10150 01	Pipe, shaft complete (incl. 2)	5432	1					
2	621 10030 00	Bush complete	3507	5					
3	620 15021 00	Shaft	5433	1					
4	621 95195 01	Label, caution	3015	1					
5	625 95147 00	Label, caution	5434	2					
6	621 30170 01	Case, gear assembly (incl. 7-12, 15-22)	5435	1					
7	621 25003 00	Ball bearing (#609ZZ)	6176	1					
8	0600 06999 0	Ball bearing (#626ZZ)	5310	1					
9	0600 10993 0	Ball bearing (#6000DDU)	1386	1					
10	621 8500000-2	Washer, receive	3516	1					
11	621 8003 000	Washer, clamp	6112	1					
12	621 85002 00	Guard	3519	1					
15	0119 05978 0	Socket head bolt (M5x12 W, SW)	2343	2					
16	0119 06996 0	Socket head bolt (M6x8)	5436	1					
17	00315 0800 0	Snapping, outer	6130	1					
18	00314 2600 0	Snapping, inner	6129	1					
19	00314 2400 0	Snapping, inner	1187	1					
20	621 30210 00	Gear set	5437	1					
21	00431 0506 0	Screw, pan head (M5x6)	1706	1					
22	625 85050 0	Nut (M8 SW)	5438	1					
25	0119 05989 0	Socket head bolt (M5x25 SW)	6268	1					
26	0119 05990 0	Socket head bolt (M5x12 SW)	6128	1					
28	616 40050 01	Handle complete	5314	1					
29	0630 03990 0	Control cable	5323	1					
30	625 40220 00	Hanger complete	5439	1					
31	00436 0520 0	Screw assembly (M5x20 W, SW)	3617	1					
32	00117 0630 0	Bolt (M6x30 W, SW)	5440	2					
33	621 80120 01	Protector assembly (incl. 35, 36)	8100	1					
34	641 85003 02	Clamp, protector	6283	1					
40	616 50210 00	Case, lever assembly (incl. 44-47)	5441	1					
44	616 50090 02	Switch complete	5442	1					
45	616 55006 01	Lever	5319	1					
46	616 55007 01	Connector	5320	1					
47	0150 04992 0	Tapping screw	5321	2					
48	0150 04991 0	Tapping screw	5322	1					
49	616 45002 00	Spacer	5316	1					
50	00237 0600 0	Flange nut	7505	1					
51	0100 06982 0	Bolt, cross recess	5443	1					



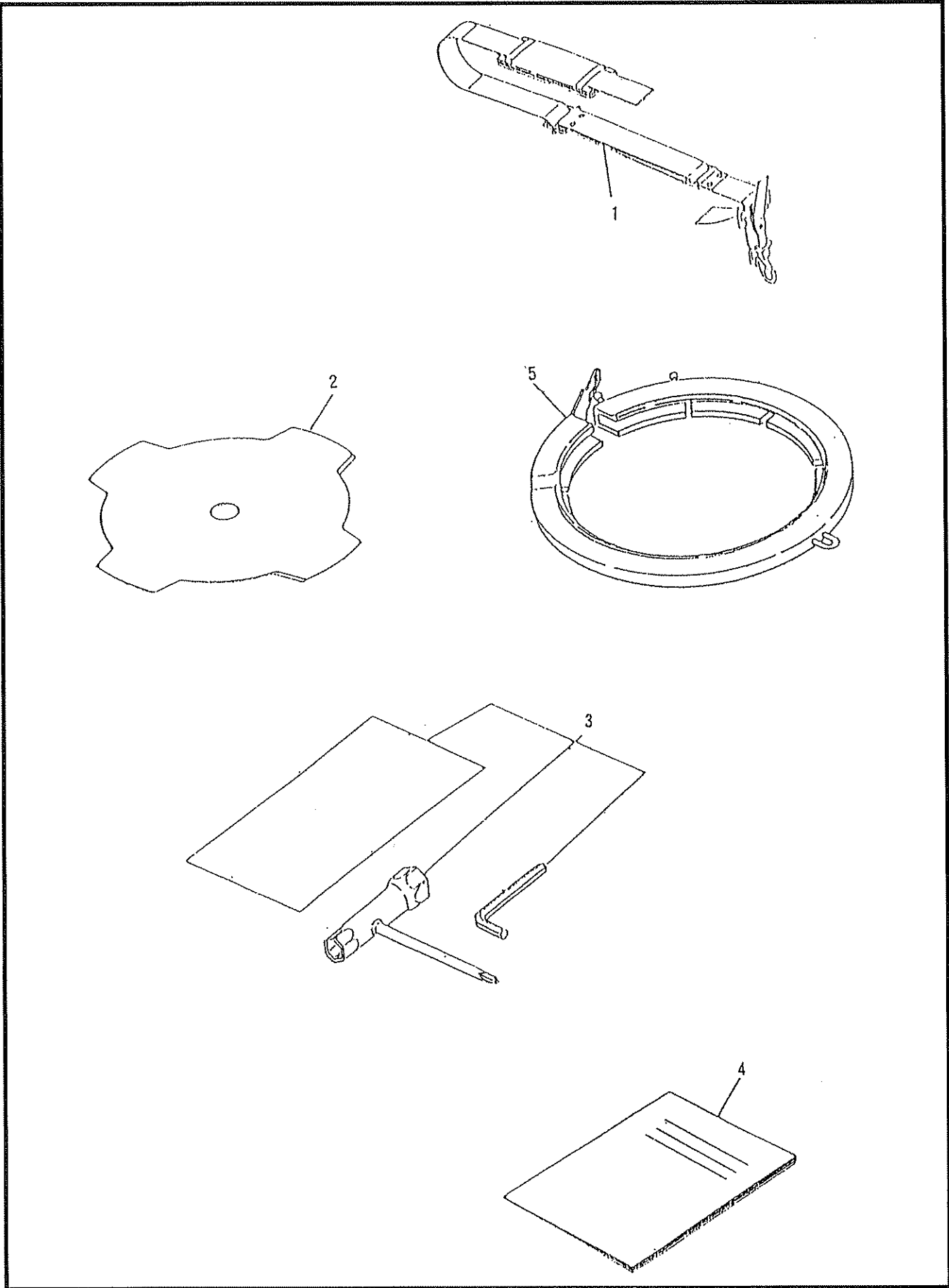
# Engine Body

NB252

Ref. No.	Mfg.'s No.	Part Name	Our Part No.	Qty.	Ref. No.	Mfg.'s No.	Part Name	Our Part No.	Qty.
1	523 10110 00	Crankcase complete (incl. 2, 4, 5)	<b>5324</b>	1	45	00436 0518 0	Screw assembly (M5x18 W, SW)	<b>4226</b>	4
2	523 15022 02	Gasket, crankcase	<b>5325</b>	1	46	523 65041 01	Tank, fuel	<b>5367</b>	1
3	0140 05952 0	Screw	<b>5341</b>	3	47	531 60140 00	Cap, fuel tank assembly	<b>5368</b>	1
4	0600 12992 0	Ball bearing	<b>1003</b>	2	48	523 60480 02	Tube	<b>5369</b>	1
5	0440 12997 0	Oil seal	<b>5447</b>	2	49	523 65039 00	Filter	<b>5370</b>	1
6	523 20170 00	Crankshaft complete (incl. 18)	<b>5448</b>	1	50	503 65003 00	Plate	<b>6162</b>	1
8	523 25019 02	Piston	<b>5327</b>	1	51	503 65002 00	Plate	<b>6161</b>	1
9	524 25007 01	Ring, piston	<b>5328</b>	1	52	521 65002 00	Damper	<b>6160</b>	2
10	523 25026 00	Pin, piston	<b>5329</b>	1	53	521 95002 00	Label, trade mark	<b>5457</b>	1
11	0565 08997 0	Clip	<b>5330</b>	2	55	616 55012 00	Wire	<b>5342</b>	1
12	523 15023 04	Gasket, cylinder	<b>5405</b>	1	58	523 55046 00	Tapping screw	<b>5372</b>	1
13	523 15018 03	Cylinder	<b>5332</b>	1	60	523 50240 12	Reel	<b>5373</b>	1
14	0119 05973 0	Socket head bolt (M5x20 W, SW)	<b>5333</b>	2	61	523 50240 32	Spiral spring	<b>5374</b>	1
15	523 35039 02	Gasket, insulator	<b>5335</b>	2	62	523 50240 22	Starter rope	<b>5375</b>	1
16	523 35052 01	Insulator, carburetor	<b>5336</b>	1	63	521 50021 10	Starter knob	<b>7037</b>	1
17	0610 08999 0	Needle roller bearing	<b>1012</b>	1	64	542 50030 10	Set screw (with SW)	<b>5376</b>	1
19	523 30380 01	Insulator complete	<b>5339</b>	1	67	625 15068 01	Bracket, pipe 1	<b>5377</b>	1
20	523 35041 03	Gasket, insulator	<b>5340</b>	1	68	625 15069 01	Bracket, pipe 2	<b>5378</b>	1
21	0140 05950 0	Screw (M5x25 W, SW)	<b>5341</b>	2	69	625 15066 01	Damper, pipe 1	<b>5379</b>	1
23	523 35043 02	Gasket, muffler	<b>5343</b>	1	70	625 15067 01	Damper, pipe 2	<b>5380</b>	1
24	523 35053 01	Insulator, muffler	<b>5344</b>	1	71	0119 05995 0	Socket head bolt (M5x18 SW)	<b>1223</b>	2
25	523 30410 01	Muffler, exhaust	<b>5346</b>	1	74	625 50210 01	Strap unit	<b>5444</b>	1
27	0119 05960 0	Socket head bolt (M5x45 W)	<b>5348</b>	2	75	00113 0616 0	Bolt assembly (M6x16 SW)	<b>6190</b>	1
28	525 70020 10	Flywheel	<b>5449</b>	1	76	00312 0600 0	Washer (M6)	<b>1395</b>	1
29	523 70310 23	Coil	<b>5450</b>	1	77	621 20100 00	Clutch (incl. 78-82)	<b>5445</b>	1
30	0140 04992 0	Screw assembly (M4x20 W, SW)	<b>5351</b>	2	78	0200 08991 0	Washer	<b>6486</b>	2
31	523 75032 02	Grommet	<b>5352</b>	1	79	523 85005 00	Spring, clutch	<b>5446</b>	1
32	0654 00993 1	Spring, plug cap	<b>6169</b>	1	80	625 25004 00	Bolt, clutch	<b>6181</b>	2
33	523 75033 01	Cap, plug	<b>5354</b>	1	81	625 25008 00	Shoe, clutch	<b>6180</b>	2
34	0650 14981 0	Plug, spark (BM7A)	<b>BM6A</b>	1	82	625 25009 00	Washer	<b>1144</b>	2
36	625 20120 03	Drum clutch complete	<b>5451</b>	1					
37	523 50260 02	Cover, engine complete	<b>5381</b>	1					
38	00315 1200 0	Snapring outer	<b>1398</b>	1					
39	0140 05951 0	Screw (M5x20)	<b>5360</b>	3					
40	523 50250 01	Pulley	<b>5361</b>	1					
42	523 55047 00	Bolt assembly (M6x14 W)	<b>5363</b>	1					
43	523 50240 02	Starter, rewind (incl. 60-64)	<b>5452</b>	1					
44	523 65043 00	Pump	<b>5366</b>	1					











(

(

(



**Carswell Import & Marketing Associates, Inc./Carswell**

3750 N. Liberty Street, Post Office Box 4193  
WINSTON-SALEM, NORTH CAROLINA 27115-4193