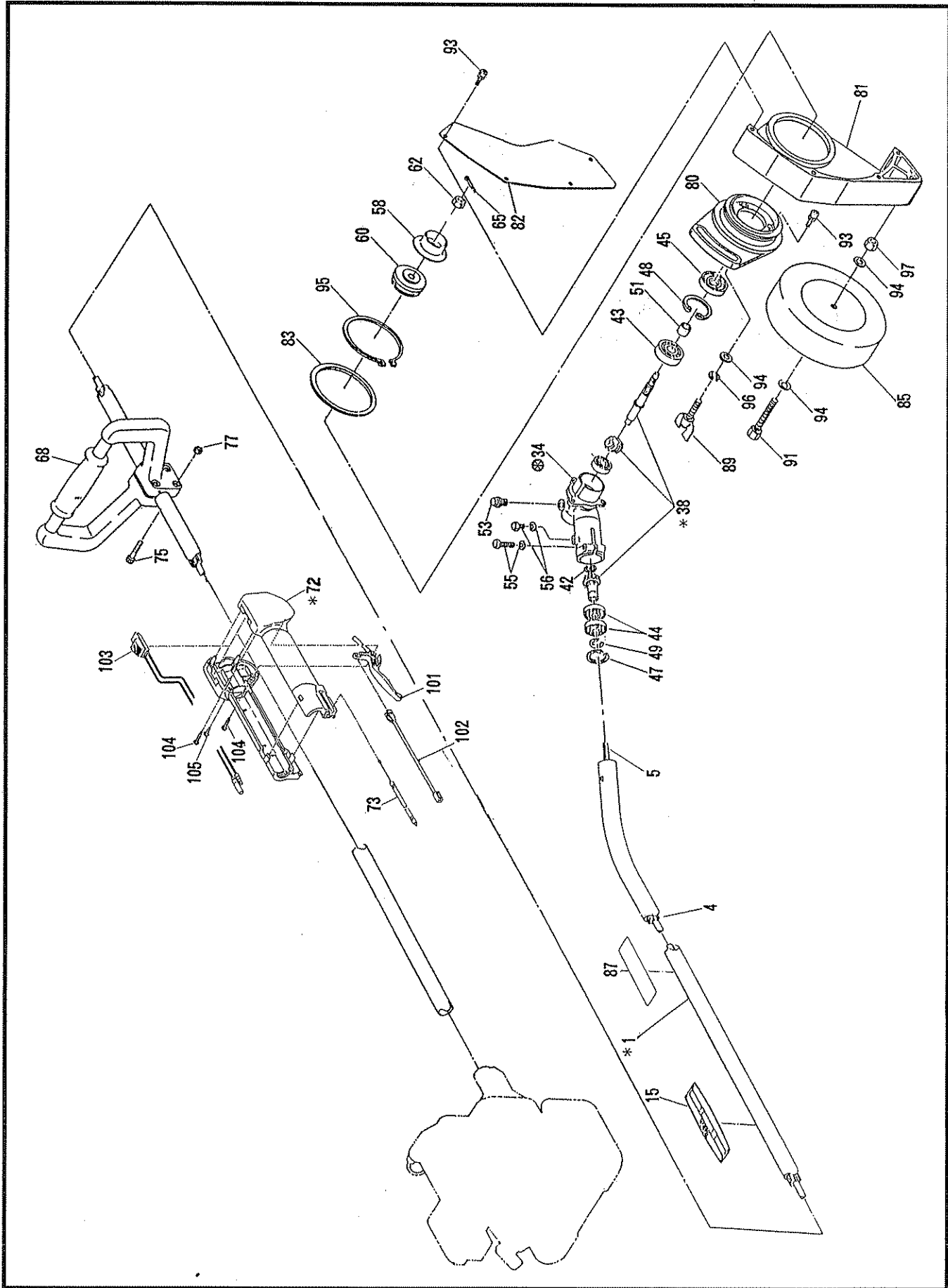




STICK EDGER

Model BE221

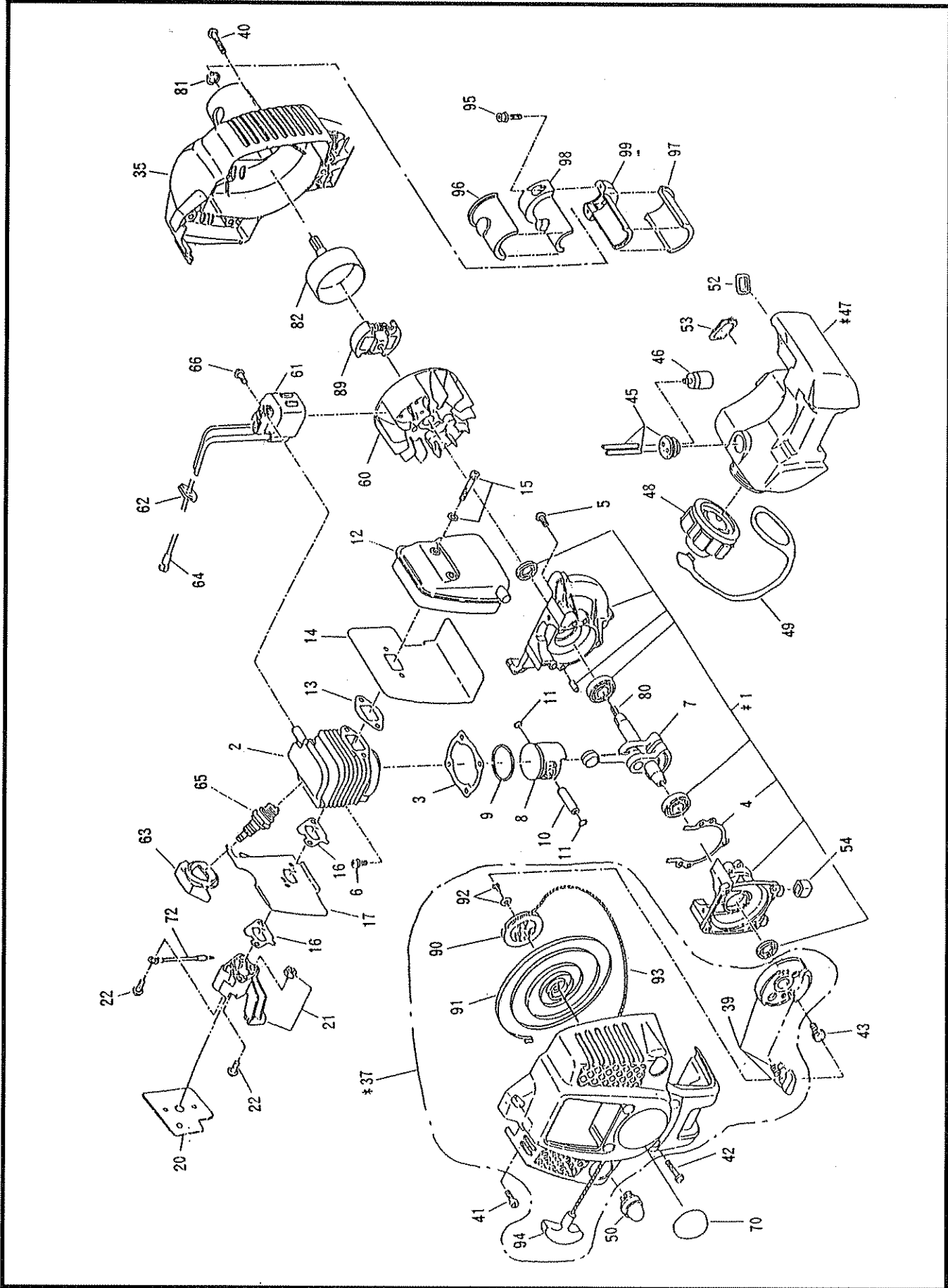
PARTS MANUAL



Machine Body

BE221

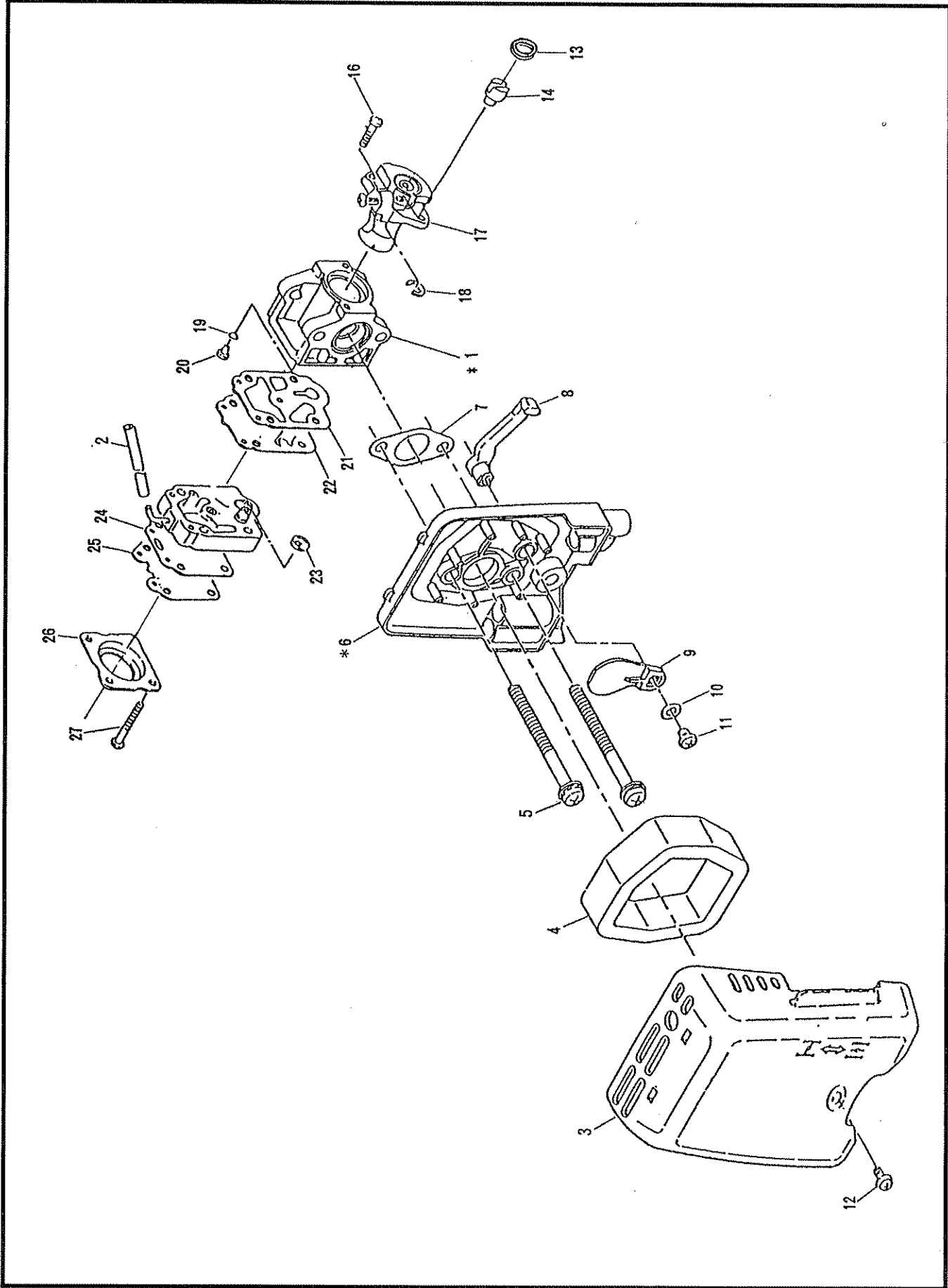
Ref. No.	Mfg.'s No.	Part Name	Our Part No.	Qty.	Ref. No.	Mfg.'s No.	Part Name	Our Part No.	Qty.
1	602 10050 00	Pipe shaft assembly	2312	1	96	00320 0800 0	Spring washer (M8)	1295	2
4	602 15003 00	Liner	2355	1	97	00228 0800 0	Nut (M8x5)	1291	1
5	602 15002 00	Shaft flexible	2356	1	101	616 55006 01	Lever	5319	1
14	00315 1200 0	Snapring, outer	1398	1	102	616 55007 01	Connector	5320	1
15	602 95019 01	Label, serial	2314	1	103	616 50090 01	Switch complete	5318	1
20	0119 05995 0	Socket head bolt (M5x18 SW)	1223	4	104	0150 04992 0	Tapping screw	5321	2
34	602 30100 00	Case, gear assembly (incl. 38-65)	2311	1	105	0150 04991 0	Tapping screw	5322	1
38	602 30080 00	Shaft blade complete	2313	1					
43	0600 10999 0	Ball bearing	2315	1					
44	621 25003 00	Ball bearing	2316	2					
45	625 35011 00	Oil seal	2317	1					
47	00314 2400 0	Snapring, inner	2318	1					
48	00314 3000 0	Snapring, inner	1188	1					
49	625 35026 00	Snapring, outer	2319	1					
51	625 35013 00	Spacer	2320	1					
53	641 35008 00-1	Bolt, oil	2321	1					
55	00113 0630 0	Bolt assembly (M6x30 SW)	8044	1					
56	00113 0612 0	Bolt assembly (M6x12 SW)	2322	1					
58	625 85000 01	Washer, clamp	2323	1					
60	625 85036 00	Washer, receive	2324	1					
62	625 85050 00	Nut	2325	1					
65	00510 2518 0	Cotter pin	2327	10					
68	621 45000 01	Handle	2328	1					
72	616 50160 02	Control lever (incl. 73, 101-105)	5317	1					
73	0630 03990 0	Control cable	5323	1					
75	0119 05988 0	Socket head bolt (M5x33)	2333	4					
77	00227 0500 0	Nut (M5)	2334	4					
80	602 85001 00	Holder	2335	1					
81	602 85002 00	Cover, blade	2336	1					
82	602 85003 00	Cover	2337	1					
83	602 85004 00	Plate	2338	1					
85	602 85005 01	Wheel	2352	1					
87	602 95017 01	Label, caution	2339	1					
89	0122 08996 0	Wing bolt	2341	1					
91	00168 0850 0	Bolt (M8x50)	2342	1					
93	0119 05978 0	Socket head bolt (M5x12 SW, W)	2343	7					
94	00311 0800 0	Washer (M8)	2344	3					
95	00315 8000 0	Snapring, outer	2345	1					

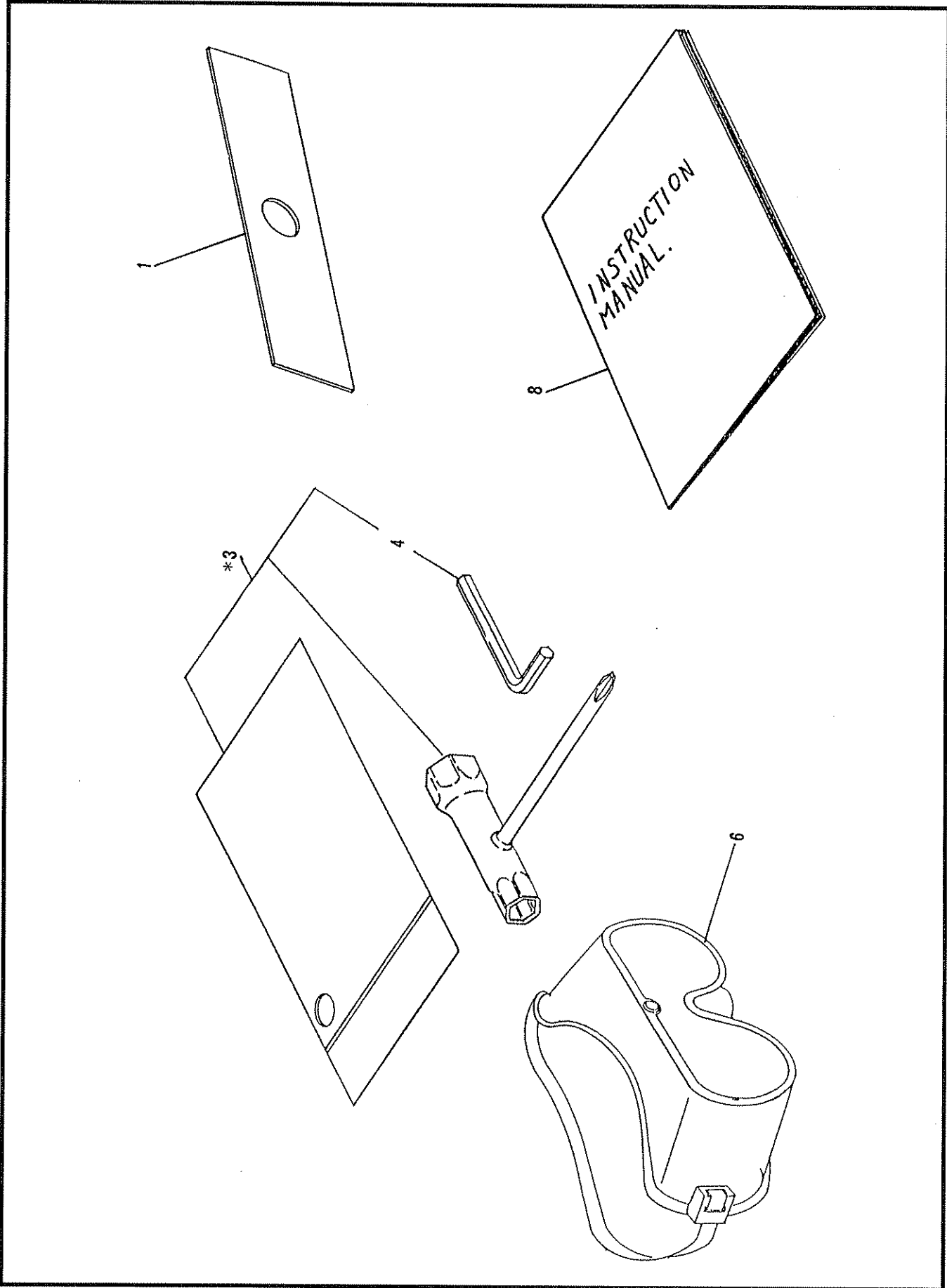


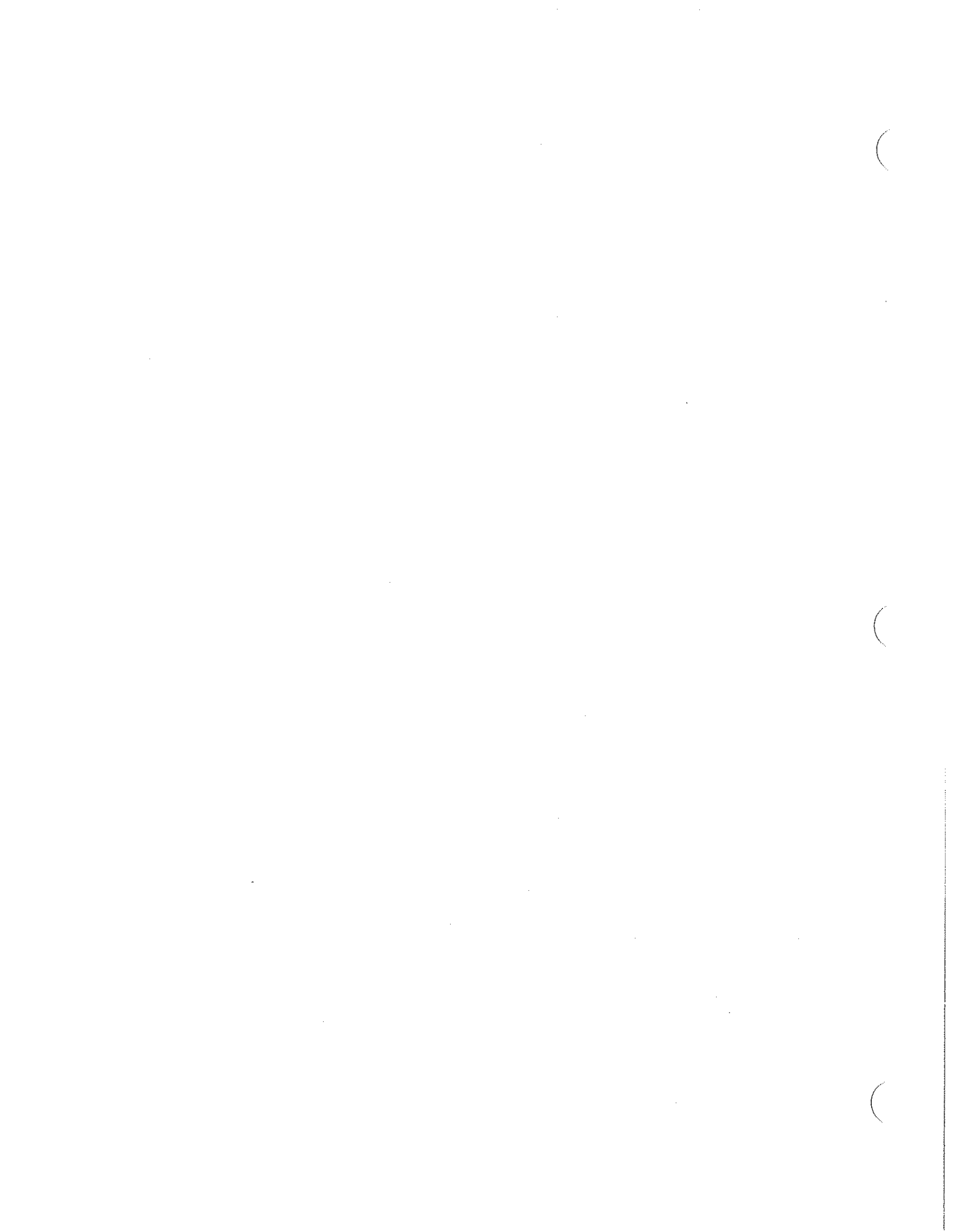
Engine Body

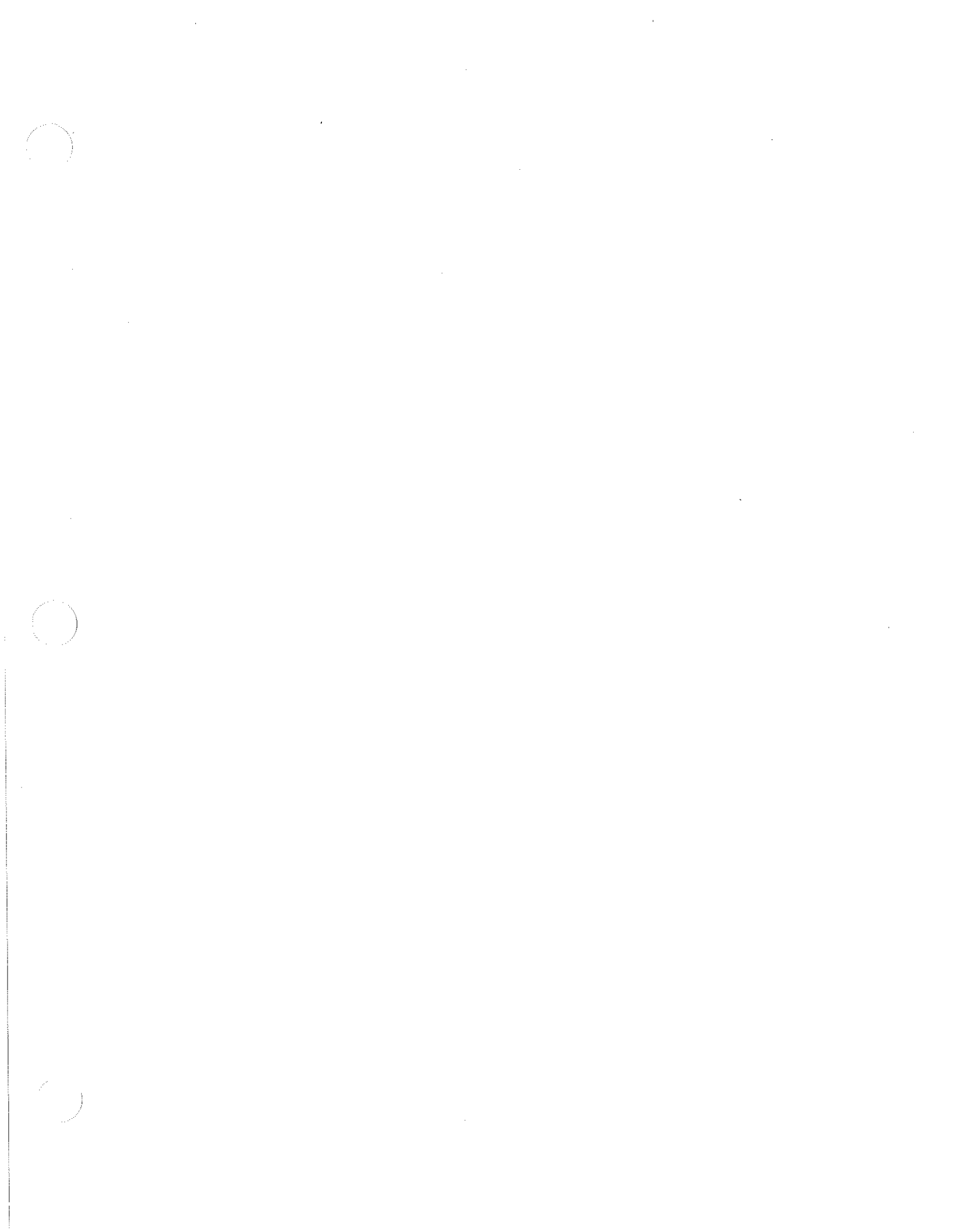
BE221

Ref. No.	Mfg.'s No.	Part Name	Our Part No.	Qty.	Ref. No.	Mfg.'s No.	Part Name	Our Part No.	Qty.
1	523 10110 00	Crank case assembly (incl. 4)	5324	1	62	523 75032 02	Grommet	5352	1
2	521 15012 01	Cylinder	5469	1	63	523 75033 01-1	Cap, plug	5354	1
3	523 15023 04	Gasket, cylinder	5405	1	64	0654 00993 1	Spring, plug cap	6169	1
4	523 15022 02	Gasket, crank case	5325	1	65	0650 14981 0	Plug, spark (BM7A)	BM6A	1
5	0140 05952 0	Screw	5341	3	66	0140-04992 0	Screw (M4x20)	5351	2
6	0119 05973 0	Socket head bolt (M5x20 W SW)	5333	2	70	602 95020 00	Label, model	5472	1
7	523 20110 06	Crank shaft complete	5326	1	71	521 95002 00	Label, trade mark	5457	1
8	521 25007 00	Piston	6534	1	72	616 55012 00-1	Wire	5342	1
9	598 25000 00	Ring, piston	1014	1	80	0105 06497 0	Stud	5338	1
10	521 25008 01	Pin, piston	6535	1	81	00315.1200 0	Snapping, outer	1398	1
11	0565 08997 0	Clip	5330	2	82	602 20020 00	Clutch drum complete	5473	1
12	523 30410 01-1	Muffler, exhaust	5346	1	89	616 20050 02	Clutch assembly	5355	1
13	523 35043 02	Gasket, muffler	5343	1	90	523 50240 12	Reel	5373	1
14	523 35053 01	Insulator, muffler	5344	1	91	523 50240 32	Spiral spring	5374	1
15	0119 05960 0	Socket head bolt (M5 x45 W)	5348	2	92	542 50030 10	Set screw	5376	1
16	523 35039 02	Gasket, insulator	5335	2	93	523 50240 22	Starter rope	5375	1
17	523 35052 01	Insulator, carburetor	5336	1	94	522 50040 20	Starter knob	7614	1
20	523 35041 03-1	Gasket, insulator	5340	1	95	0119 05995 0	Socket head bolt (M5x18 SW)	1223	2
21	523 30380 01	Insulator complete	5339	1	96	625 15066 01	Damper, pipe (1)	5379	1
22	0140 05950 0	Screw (M5x25 W SW)	5341	2	97	625 15067 01	Damper, pipe (2)	5380	1
35	523 50260 02	Cover, engine complete	5381	1	98	625 15068 01	Bracket, pipe (1)	5377	1
37	523 50230 02	Cover, starter complete (incl. 39, 90-94)	5452	1	99	625 15069 01	Bracket, pipe (2)	5378	1
39	523 50250 01	Pulley	5361	1					
40	0140 05951 0	Screw assembly (M5x20 SW)	5360	3					
41	523 55046 00	Tapping screw (M5x18)	5372	1					
42	00436 0518 0	Screw assembly (M5x18 W SW)	4226	4					
43	523 55047 00	Bolt assembly	5363	1					
45	523 60480 02	Tube	5369	1					
46	523 65039 00	Filter	5370	1					
47	523 65041 01	Tank, fuel	5367	1					
48	531 60140 00	Cap, fuel tank	5468	1					
49	625 50210 01	Strap unit	5444	1					
50	523 65043 00	Pump	5366	1					
52	503 65002 00	Plate	6161	1					
53	503 65003 00	Plate	6162	1					
54	521 65002 00	Damper	6160	2					
60	523 70310 11	Flywheel	5471	1					
61	523 70310 23	Coil	5470	1					









Carswell Import & Marketing Associates, Inc./Carswell
3750 N. Liberty Street, Post Office Box 4193
WINSTON-SALEM, NORTH CAROLINA 27115-4193