

Fuel Tanks By Engine Model

| MODEL | DESCRIPTION | PART NO. |
|------------------|---|----------|
| ACN, BKN | Round tank | WE112E |
| ACN, BKN | Rectangular tank | WE413S1 |
| ADH, AEH, AFH | Rectangular tank | WE14K |
| ADH, AEH, AFH | Oblong tank (Obsolete) | WE371 |
| AGH, AHH | Oblong tank (Obsolete) | WE371 |
| AGH, AHH | Round tank | WE14K |
| AENL | Round tank | WE14K |
| AENL | Oblong tank | WE37F |
| AENL | Round tank (Repl. by WE425S1) | WE414S1 |
| AENL | Round tank | WE425S1 |
| AENL | Oblong tank | WE415S1 |
| AGND | Oblong tank | WE417S1 |
| MACND, MBKND | Rectangular tank | WE411B |
| MAENLD | Oblong tank | WE37H |
| MVG4D | Rectangular tank (NLA) | WE278DS1 |
| S7D, S8D | Rectangular tank | WE413S1 |
| S7D, S8D | Rectangular tank | WE413AS1 |
| S10D, S12D, S14D | Oblong tank | WE415S1 |
| TE, TF | Oblong tank | WE302 |
| TF | Rectangular tank | WE187HS1 |
| THD | Oblong tank | WE260A |
| THD | Rectangular tank, underslung (Obsolete) | WE304 |
| THD | Oblong tank | WE412S1 |
| TJD | Oblong tank | WE260A |
| TJD | Rectangular tank | WE278J |
| TJD | Rectangular tank (Obsolete) | WE304 |
| TJD | Oblong tank | WE412S1 |
| TRA10D | Rectangular tank | WE413S1 |
| TRA10D | Rectangular tank | WE413AS1 |
| TRA12D | Rectangular tank | WE413S1 |
| TRA12D | Rectangular tank | WE413AS1 |
| TRA12D | Oblong tank | WE415S1 |
| VE4D, VF4D | Rectangular tank, side mount | WE187S1 |
| VE4D, VF4D | Rectangular tank, side mount | WE187ES1 |
| VE4D, VF4D | Oblong tank | WE192 |
| VE4D, VF4D | Oblong tank, underslung | WE204 |
| VE4D, VF4D | Oblong tank, underslung | WE204A |

Fuel Tanks By Engine Model (Cont.)

| MODEL | DESCRIPTION | PART NO. |
|---------|---|----------|
| VG4D | Oblong tank | WE250 |
| VG4D | Rectangular tank, underslung | WE277S1 |
| VG4D | Rectangular tank, side mount, (Repl. by WE427S1) | WE278S1 |
| VG4D | Rectangular tank | WE278GS1 |
| VG4D | Rectangular tank, side mount | WE427S1 |
| VH4D | Rectangular tank, side mount | WE187ES1 |
| VH4D | Oblong tank | WE192 |
| VH4D | Oblong tank, underslung | WE204 |
| VH4D | Oblong tank, underslung | WE204A |
| VH4D | Rectangular tank | WE427S1 |
| VH4D | Rectangular tank, side mount | WE187S1 |
| V465D | Rectangular tank | WE427S1 |
| V465D | Rectangular tank | WE278GS1 |
| W2-880 | Oblong tank | WE412S1 |
| W4-1770 | Rectangular tank, side mount | WE187S1 |
| W4-1770 | Rectangular tank, side mount | WE187ES1 |
| W4-1770 | Rectangular tank | WE427S1 |
| W2-1230 | Rectangular tank | WE187ES1 |
| W2-1230 | Rectangular tank | WE427S1 |
| W2-1235 | Oblong tank | WE412S1 |
| W2-1235 | Rectangular tank | WE187ES1 |
| W2-1250 | Rectangular tank | WE187ES1 |
| W2-1250 | Rectangular tank | WE427S1 |

Fuel Tanks By Part Number

| PART NO. | DESCRIPTION | MODEL |
|----------|--|------------------------------------|
| WE14K | Round tank | ADH, AE, AEH, AFH, AGH, AHH, AENL |
| WE37F | Obround tank | ADH, AE, AEH, AFH, AGH, AHH, AENL |
| WE37H | Obround tank | MAENLD |
| WE112E | Round tank | ACN, BKN |
| WE187S1 | Rectangular tank, side mount | VE4D, VF4D |
| WE187ES1 | Rectangular tank, side mount | VE4D, VF4D, VH4D |
| WE187H | Rectangular tank | TF |
| WE192 | Obround tank | VF4D, VH4D |
| WE204 | Obround tank, underslung | VE4D, VF4D, VH4D |
| WE204A | Obround tank, underslung | VE4D, VF4D, VH4D |
| WE250 | Obround tank | VG4D |
| WE260A | Obround tank | THD, TJD |
| WE277S1 | Rectangular tank, underslung | VG4D |
| WE278S1 | Rectangular tank, side mount (replaced by WE427S1) | VG4D |
| WE278DS1 | Rectangular tank | MVG4D |
| WE278GS1 | Rectangular tank | VG4D, V465D |
| WE278J | Rectangular tank | TJD |
| WE302 | Obround tank | TE, TF |
| WE304 | Rectangular tank | THD |
| WE411B | Rectangular tank | MACND, MBKND |
| WE412S1 | Obround tank | THD, TJD, TH, W2-880 |
| WE413S1 | Rectangular tank | S7D, S8D, TRA10D, ACN, BKN, TRA12D |
| WE413AS1 | Rectangular tank | S7D, S8D, TRA10D, ACN, BKN, TRA12D |
| WE414S1 | Round tank | AENLD |
| WE415S1 | Obround tank | S10D, S12D, S14D, TRA12D, AENL |
| WE417S1 | Obround tank | AGND |
| WE425S1 | Round tank | AENL |
| WE427S1 | Rectangular tank | VG4D, W4-1770, VH4D V465D |
| WE187S1 | Side mount-mounting | VH4D, VE4, VF4, W4-1770 |
| WE192 | Engine house with fuel tank at take-off end | VE4D, VF4D, VH4D |
| WE204S1 | Engine house with underslung fuel tank | VE4D, VF4D, VH4D |
| WE250 | Engine house with fuel tank | VG4D |
| WE304 | Underslung fuel tank | TH, THD, TJD |
| WE412S1 | Mounting | THD, TJD, W2-880 |
| WE427S1 | Side mount fuel tank | VG4D |

Fuel Tank Information

| PART NO. | SHAPE | CAPACITY GALLONS | NECK STYLE | LENGTH | WIDTH | HEIGHT | DIAM. | MODEL |
|------------------------------|----------------------------|---------------------|-------------------------|---------|----------|----------|--------|---------------------------------------|
| WE14K | Round | 1.35 | 1-3/4 diam. Bayonet | 11" | | | 6-5/32 | ADH, AE, AEH, AFH, AGH, AHH, AENL |
| WE37F | Obround | 2.75 | 1-3/4 diam. Bayonet | 13" | 6" | 10" | | ADH, AE, AEH, AFH, AGH, AHH, AENL |
| WE37H | Obround | 2.75 | 1-5/8 diam. Bayonet | 1" | 6" | 10" | | MAENLD |
| WE112E | Round | 1 | 1-3/4 diam. Bayonet | 10" | | | 5-3/4 | ACN, BKN |
| WE187S1 | Rectangular, side mount | 6 | 2-9/32 diam. Bayonet | 14-3/4" | 11" | 9" | | VE4D, VF4D |
| WE187ES1 | Rectangular, side mount | 5.3 | 2-9/32 diam. Bayonet | 13-3/8" | 11" | 9" | | VE4D, VF4D, VH4D |
| WE187H | Rectangular | 6 | 2-3/8 diam. Neck | 14-3/4" | 11" | 9" | | TF |
| WE192 | Obround | 6 | 2-3/8 diam. Neck | 21-1/2" | 8-3/8" | 10-1/8" | | VF4D, VH4D |
| WE204 | Obround, underslung | 6 | 1-3/4 diam. Bayonet | 19-1/4" | 15-1/2" | 6-1/4" | | VE4D, VF4D, VH4D |
| WE204A | Obround underslung | 6 | 1-3/4 diam. Bayonet | 19-1/4" | 15-1/2" | 6-1/4" | | VE4D, VF4D, VH4D |
| WE250 | Obround | 9 | 2-3/8 diam. Neck | 24" | 9-1/2" | 11" | | VG4D |
| WE260A | Obround | 4 | 2-3/8 diam. Neck | 9-1/16" | 8-3/16" | 7-7/8" | | TJD, THD |
| WE277S1 | Rectangular, underslung | 9 | 1-3/4 diam. Bayonet | 22" | 16" | 6-1/4" | | VG4D |
| WE278S1 | Rectangular | 9 | 2-1/4 diam. Bayonet | 16" | 15" | 9-1/2" | | VG4D |
| WE278DS1 | Rectangular | 9 | 4-21/32 diam. | 16" | 15" | 9-1/2" | | MVG4D |
| WE278GS1 | Rectangular | 15 | 2-1/4" diam. Bayonet | 26" | 15" | 9-1/2" | | VG4D, V465D |
| WE278J | Rectangular | 9 | 2-3/8" diam. Neck | 16" | 15" | 9-1/2" | | TJD |
| WE412 (replaces WE302) | Obround | 3.4 | 2-7/8 diam. Neck | 13" | 10-1/16" | | | TE, TF |
| WE304 | Rectangular | 4 | | | | | | THD |
| WE411B | Rectangular | 1 | 1-5/8 diam. Neck | 10-1/4" | 5-5/16" | 4-7/16" | | MACND, MBKND |
| WE412S1 | Obround | 3.4 | 2-1/4 diam. neck | 11-1/2" | 6-9/16" | 13-1/16" | | THD, TJD, TH, W2-880 |
| WE413S1 | Rectangular | 1 | Screw 1-3/4"-6 | 10-1/4" | 5-5/16" | 4-7/16" | | S7D, S8D, TRA10D, ACN, BKN, TRA12D |
| WE413AS1 | Rectangular | 1 | Screw 1-3/4"-6 | 10-1/4" | 5-5/16" | 4-7/16" | | S7D, S8D, TRA10D, ACN, BKN, TRA12D |
| WE414S1 | Round | 1.7 | Screw, 1-3/4"-6 | 12" | | | 6-1/2 | AENLD |
| WE415S1 | Obround | 1.5 | Screw, 1-3/4"-6 | 10-7/8" | 5-15/32" | 6-15/32" | | S10D, S12D, S14D, TRA12D, AENL |
| WE417S1 | Obround | 2.4 | Screw, 1-3/4"-6 | 13" | 6" | 8-1/2" | | AGND |
| WE425S1 | Round | 1.7 | Screw, 1-3/4"-6 | 12" | | | 6-1/2 | AENL |
| WE427S1 | Rectangular | 8.5 | 2-1/4 diam. Neck | 24" | 9-1/2" | 11" | | VG4D, W4-1770, VH4D, V465D |

Non-Leaded Gasoline

There have been lead compounds added to gasoline for many years. This was a relatively inexpensive method to increase the octane rating of gasoline.

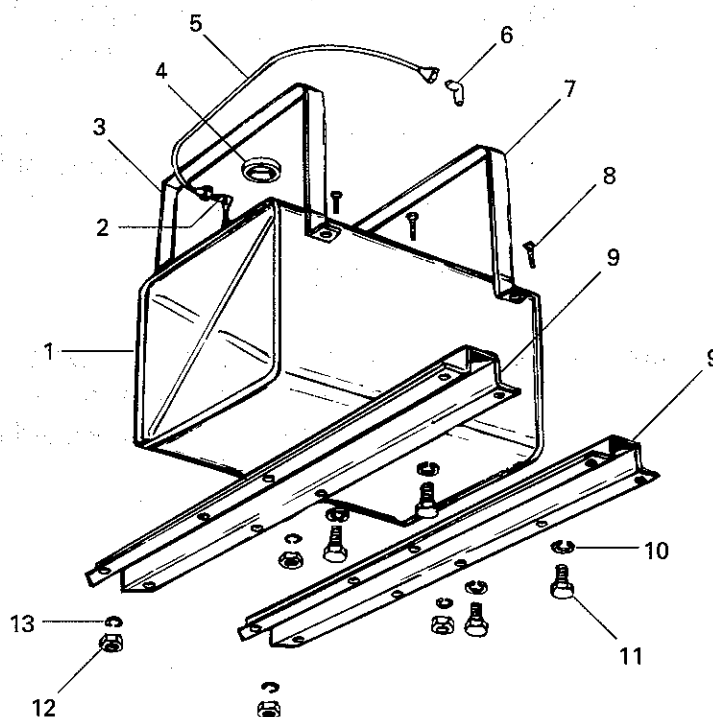
The non-leaded gasoline that is now available can be used in Wis-Con Total Power engines. The octane rating of non-leaded gasoline must be equal to or higher than specified in the engine owner's manual if it is to be used.

CAUTION:

Engines previously operated on leaded fuel must have the combustion chamber cleaned prior to switching to non-leaded fuels. Severe damage to the engine could result if this procedure is not followed. New engines may be operated on non-leaded gasoline satisfactorily.

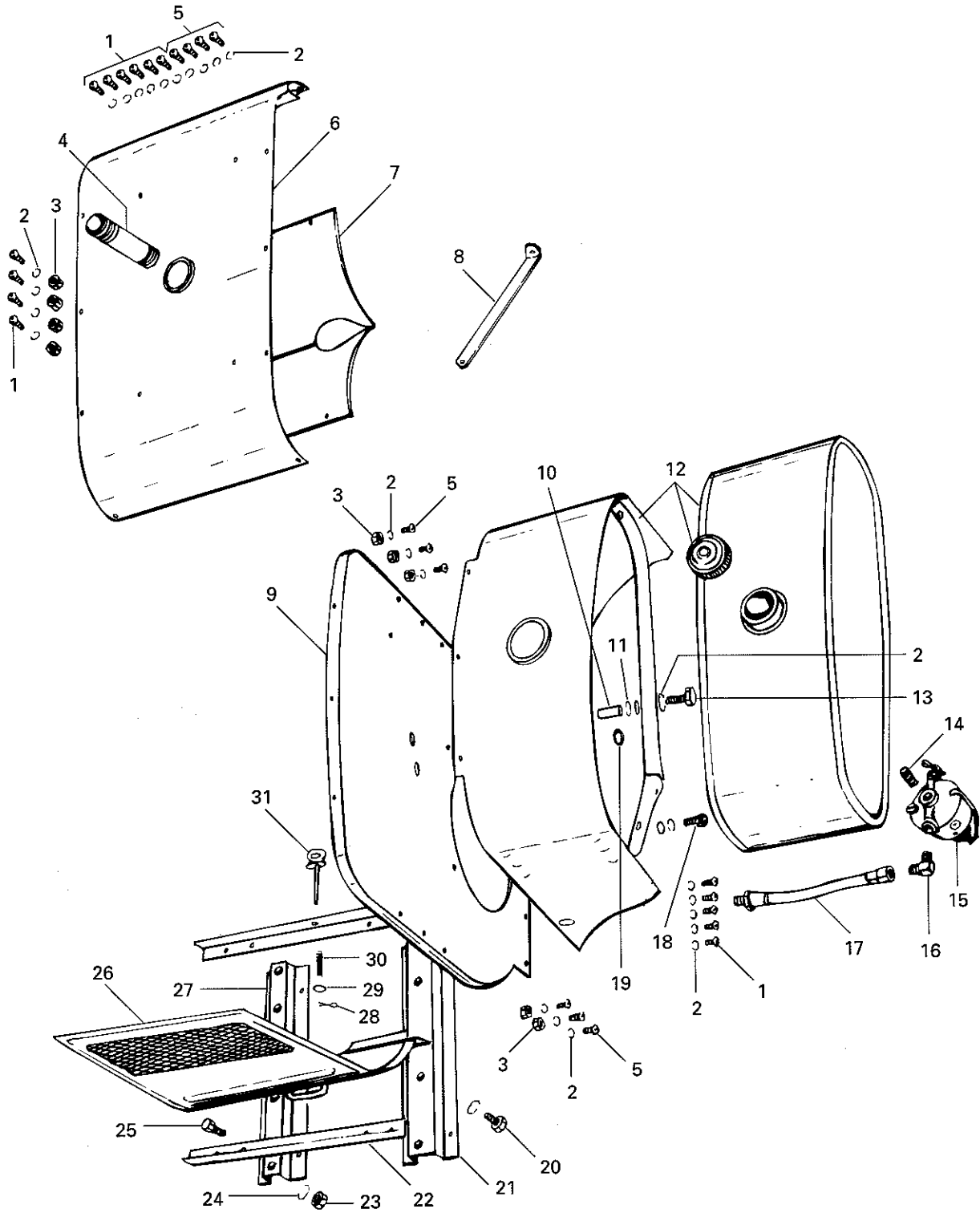
WE187S1, WE187ES1 Side Mount Fuel Tanks

USE WITH MODELS VH4D, W4-1770, VE4, VF4



| ITEM | PART NO. | DESCRIPTION | QTY |
|------|----------|--|-----|
| 1 | WE187S1 | Fuel tank, 6 gallon capacity | 1 |
| — | WE187ES1 | Fuel tank (optional) (includes 2, 4) | 11 |
| 2 | RM1206B | Suction tube assembly | 1 |
| 3 | PH244A | Felt | 2 |
| 4 | RC77 | Cap | 1 |
| 5 | RM1161 | Fuel line, 22-1/2" long | 1 |
| — | RM822 | Fuel line, 26-1/2" long, electric starter engines | 1 |
| 6 | RF1225 | Elbow | 1 |
| 7 | PG321 | Strap | 2 |
| 8 | XD27 | Screw, 3/8"-16 thread x 1" long | 4 |
| 9 | WE188 | Engine support | 2 |
| — | WE188D | Engine support, electric starter engines | 2 |
| 10 | PE7 | Lock washer, 1/2" | 4 |
| 11 | XD41 | Screw, 1/2"-13 thread x 1" long | 4 |
| 12 | PD79 | Nut, 3/8"-16 thread | 4 |
| 13 | PE5 | Lock washer, 3/8" | 4 |

WE192 Engine House With Fuel Tank At Take-Off End

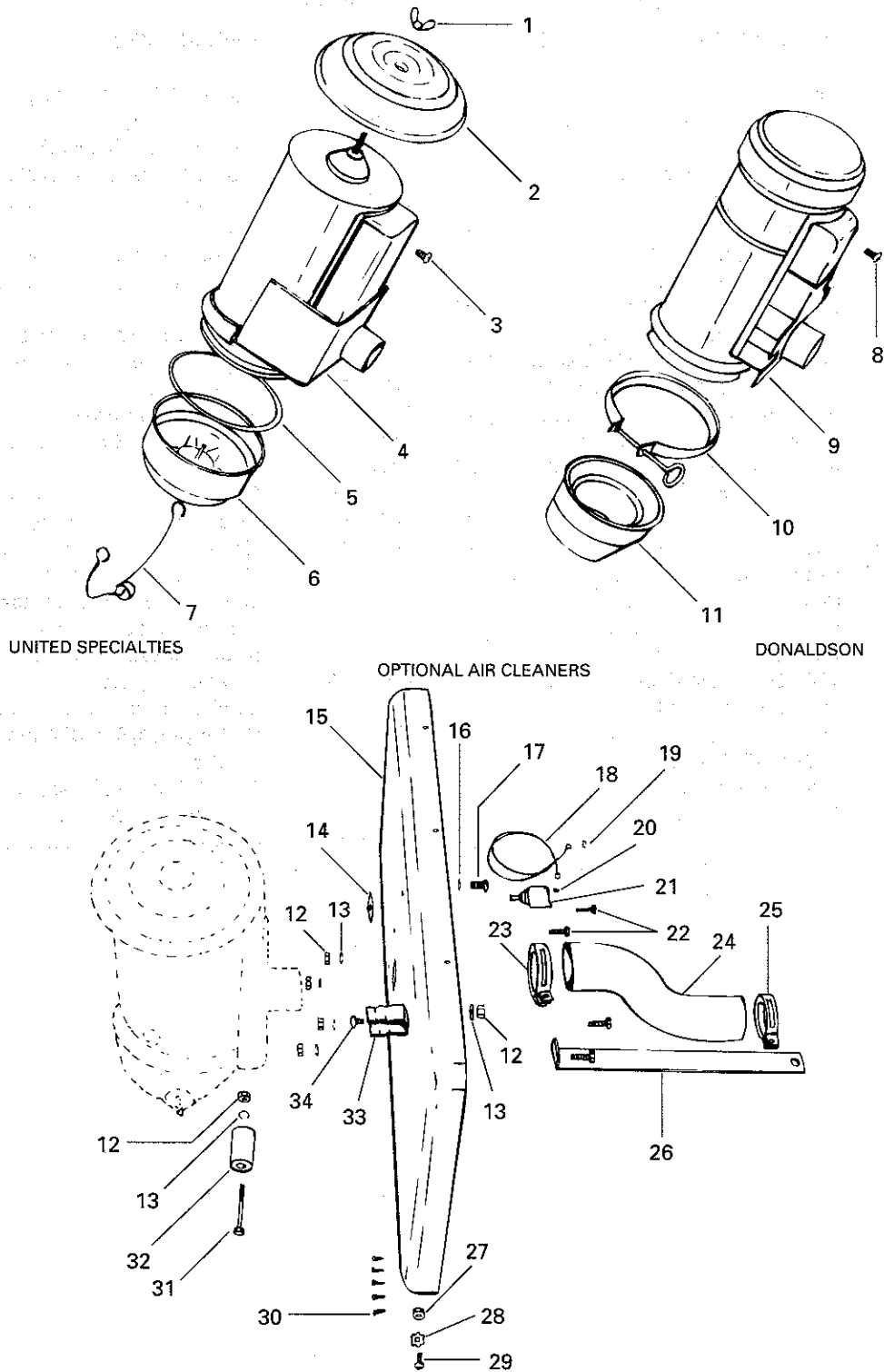


WE192 Engine House With Fuel Tank At Take-Off End

USE WITH MODELS VE4D, VF4D (see pg. 2)

| ITEM | PART NO. | DESCRIPTION | QTY | ITEM | PART NO. | DESCRIPTION | QTY |
|------|----------|---|-----|------|----------|---|-----|
| 1 | XA33 | Screw, 1/4"-20 thread x 3/8" long | 16 | 14 | RF794 | Nipple, 1/8" x 3/4" long | 1 |
| 2 | PE3 | Lock washer, 1/4" | 31 | 15 | LP19 | Fuel strainer, Tillotson no, OW418T | 1 |
| 3 | PD77 | Nut, 1/4"-20 thread | 15 | 16 | RF1225 | Elbow (replaces RF270) | 1 |
| 4 | LJ188 | Nipple, 1-1/4" x 6" long | 1 | 17 | RM1049A | Fuel line | 1 |
| 5 | XA35 | Screw, 1/4"-20 thread x 5/8" long | 11 | 18 | XD7 | Screw, 1/4"-20 thread x 1" long | 1 |
| 6 | WE198A1 | Canopy (beginning with engine serial no. 84249) | 1 | 19 | PH198 | Grommet | 1 |
| — | WE198 | Canopy (to and including engine serial no. 84248) (NLA) (use WE198A2 with WE218-1 partition plate) | 1 | 20 | XD41 | Screw, 1/2"-13 thread x 1" long | 4 |
| 7 | WE218 | Partition plate (beginning with engine serial no. 84249) ... | 1 | 21 | WE193A | Engine support, take-off end ... | 1 |
| — | WE200 | Partition plate (to and including engine serial no. 84248) | 1 | 22 | WE195 | Side rails | 2 |
| 8 | PG401 | House brace | 1 | 23 | PD79 | Nut, 3/8"-16 thread | 4 |
| 9 | WE199A | Rear panel | 1 | 24 | PE5 | Lockwasher, 3/8" | 4 |
| 10 | HF380 | Spacer | 1 | 25 | XD25 | Screw, 3/8"-16 thread x 3/4" long | 4 |
| 11 | PH196 | Washer, 1/4" I.D. x 1/16" thick | 3 | 26 | WE196 | House doors, standard | 2 |
| 12 | WE192 | Fuel tank assembly (includes WE192-9, RC77 [RC92, RC92-1 for screw type flange]) | 1 | — | WE196F | House doors, bumped out to clear distributor for units with generator and distributor on left hand side of engine (replaces WE196A) | 1 |
| — | WE192-4 | Tank (includes cap) | 1 | 27 | WE194A | Engine support, flywheel end | 1 |
| 13 | XD120 | Screw, 1/4"-20 thread x 3-1/4" long | 1 | 28 | XI23 | Cotter pin, 1/8" x 3/4" long | 2 |
| | | | | 29 | PH2 | Washer, 7/16" I.D. x 1/16" thick | 2 |
| | | | | 30 | PM137 | Door clip spring | 2 |
| | | | | 31 | PG323AS1 | Door clip | 2 |

WE192 Engine House With Fuel Tank At Take-Off End



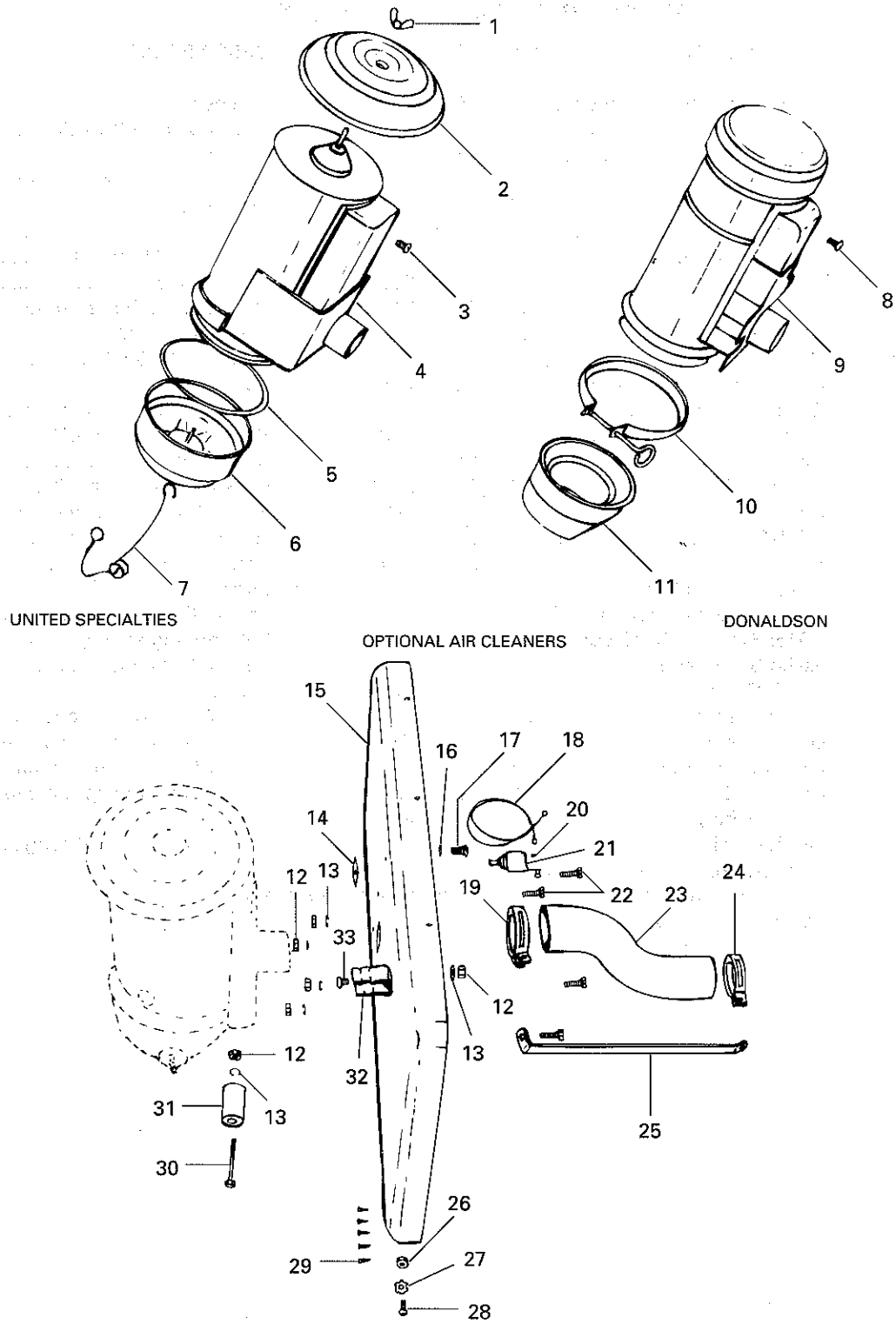
WE192 Engine House With Fuel Tank At Take-Off End

USE WITH MODELS VE4D, VF4D (see pg. 4)

| ITEM | PART NO. | DESCRIPTION | QTY | ITEM | PART NO. | DESCRIPTION | QTY |
|------|----------|---|-----|------|----------|--|-----|
| — | LO66S1 | Air cleaner, United Specialties no. CT50-10505 (obsolete) (for complete replacement use LO158S2) (includes item 17) | 1 | 16 | PH77A | Washer, 5/16" I.D. x 1/16" thick | 1 |
| 1 | A1317 | Wing nut | 1 | 17 | — — — | Screw, 5/16"-18 thread x 1/2" long | 1 |
| 2 | A10713 | Top cap and screw assembly | 1 | 18 | YL352-21 | Ignition wire (replaces YL181) | 1 |
| 3 | A10962 | Screw | 1 | 19 | PD152 | Nut, no. 6-32 thread | 1 |
| 4 | C10724 | Body assembly (less fittings) ... | 1 | 20 | PE72 | Lock washer | 1 |
| 5 | A9986 | Gasket | 1 | 21 | YC9FS1 | Ground switch assembly (includes 14, 20) (replaces YC9A, YC9C) | 1 |
| 6 | A10141 | Oil cup and baffle assembly | 1 | 22 | XD6 | Screw, 1/4"-20 thread x 3/4" long | 4 |
| 7 | B9982 | Roller and bail assembly | 1 | 23 | LK8 | Hose clamp, 2-1/8" I.D. | 1 |
| — | LO158S2 | Air cleaner, 4-3/8" diameter, Donaldson no. FGA04-2512 (includes item 17) | 1 | 24 | LL64 | Rubber elbow | 1 |
| 8 | — — — | Support screw, 5/16"-18 thread x 1/2" long | 1 | 25 | LK11 | Hose clamp, 1-7/8" I.D. | 1 |
| 9 | * LO97 | Body assembly (order complete air filter) (replaced by and interchangeable with LO158S2) (P10498 oil cup assembly must be used on LO97 for service) | 1 | 26 | PG402 | House brace, flywheel end | 1 |
| 10 | P9595 | Clamp assembly | 1 | 27 | PD115 | Nut, no. 10-32 thread | 2 |
| 11 | P14889 | Outer oil cup | 1 | 28 | PE45 | Lock washer, no. 10 | 2 |
| — | P15463 | Inner oil cup (not illustrated) ... | 1 | 29 | XA8 | Screw, no. 10-32 thread x 1/2" long | 2 |
| 12 | PD77 | Nut, 1/4"-20 thread | 15 | 30 | XA65 | Self-tapping screw, no. 8 x 1/2" long | 5 |
| 13 | PE3 | Lock washer, 1/4" | 31 | 31 | XD11 | Screw, 1/4"-20 thread x 2" long | 1 |
| 14 | SD109 | Ignition switch tag | 1 | 32 | HF387 | Crank mounting spacer (used only with LO66 air cleaner) | 1 |
| 15 | WE197 | Front panel, standard | 1 | 33 | PK87 | Crank mounting spring clip | 1 |
| — | WE197-2 | Front panel, with additional holes for switch and ammeter for electric starting units | 1 | 34 | XA34 | Screw, 1/4"-20 thread x 1/2" long | 9 |

* Not serviced separately.

WE192 Engine House With Fuel Tank At Take-Off End



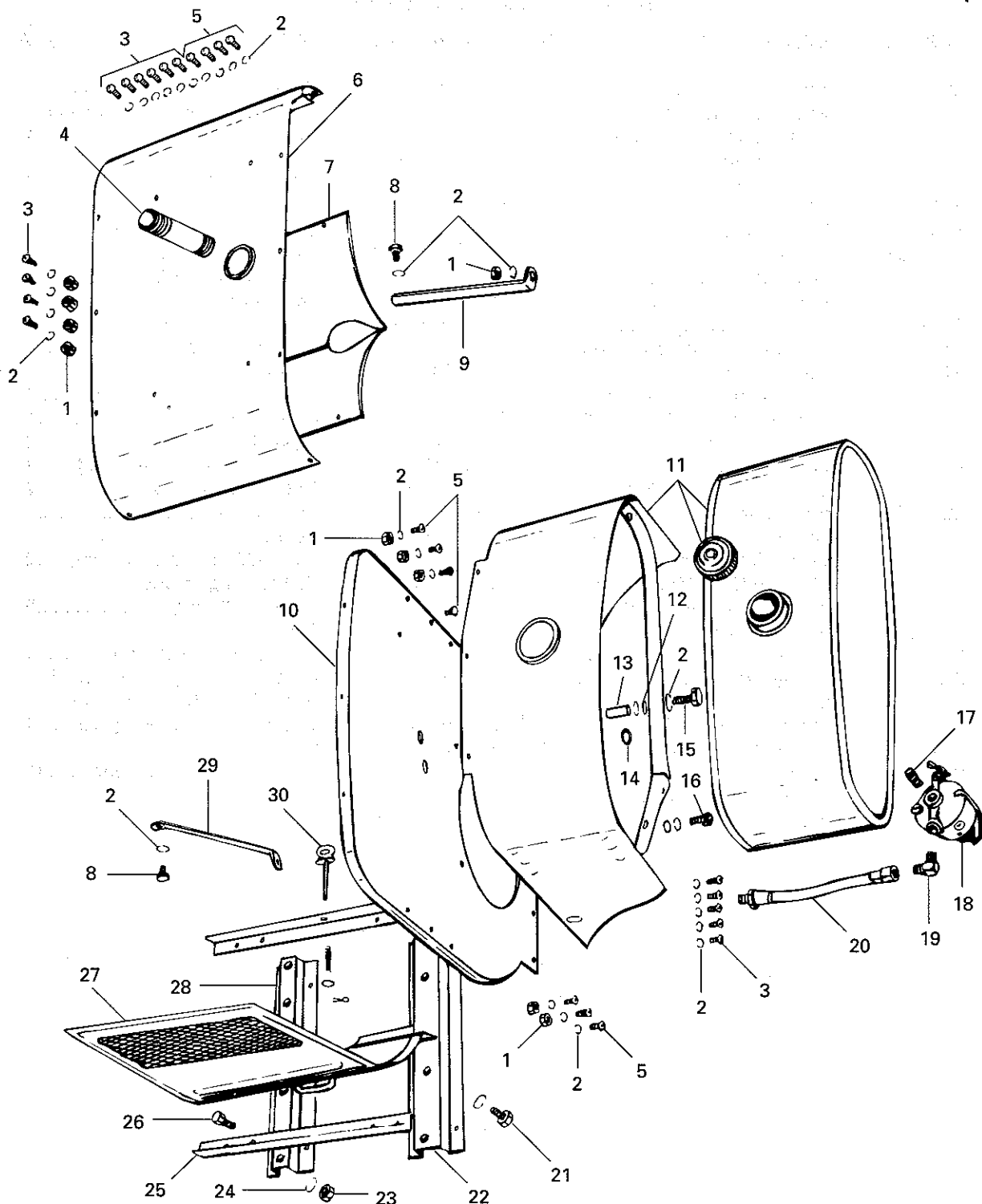
WE192 Engine House With Fuel Tank At Take-Off End

USE WITH MODELS VH4, VH4D (see pg. 6)

| ITEM | PART NO. | DESCRIPTION | QTY | ITEM | PART NO. | DESCRIPTION | QTY |
|------|-----------|---|-----|------|----------|---|-----|
| — | LO123S1 | Air cleaner, United Specialties no. 47D1 (obsolete) (for complete replacement use LO158S2) (includes item 17) | 1 | — | WE197-2 | Front panel, with additional holes for switch and ammeter for electric starting units | 1 |
| 1 | 81A1317 | Wing nut | 1 | 16 | PH77A | Washer, 5/16" I.D. x 1/16" thick | 1 |
| 2 | 81A10713 | Top cap assembly | 1 | 17 | — — — | Screw, 5/16"-18 thread x 1/2" long | 1 |
| 3 | 81A10962 | Screw 5/16"-18 thread x 1/2" long | 1 | 18 | YL352-21 | Ignition wire | 1 |
| 4 | — — — | Body assembly | 1 | 19 | LK8 | Hose clamp, 2-1/8" I.D. | 1 |
| 5 | 81A9986 | Gasket | 1 | 20 | PE72 | Lock washer | 1 |
| 6 | 81-335B1 | Oil cup and baffle assembly | 1 | 21 | YC9FS1 | Ignition switch assembly (includes 14, 20) | 1 |
| 7 | 81B9982 | Roller and bail assembly | 1 | 22 | XD6 | Screw, 1/4"-20 thread x 3/4" long | 4 |
| — | LO158S2 | Air cleaner, 4-3/8" diameter, Donaldson no. FGA04-2512 (includes item 17) | 1 | 23 | LL64 | Rubber elbow | 1 |
| 8 | — — — | Support screw, 5/16"-18 thread x 1/2" long | 1 | 24 | LK10 | Hose clamp, 2" I.D. | 1 |
| 9 | * LO120S1 | Body assembly (order complete air filter) (replaced by and interchangeable with LO158S) (22P10498 oil cup assembly [replaces P16457] must be used on LO120S1 for service) | 1 | 25 | PG799 | House brace, flywheel end | 1 |
| 10 | 22P9595 | Clamp assembly | 1 | 26 | PD115 | Nut, no. 10-32 thread | 2 |
| 11 | 22P14889 | Outer oil cup | 1 | 27 | PE45 | Lock washer, no. 10 | 2 |
| — | 22P15463 | Inner oil cup (not illustrated) ... | 1 | 28 | XA8 | Screw, no. 10-32 thread x 1/2" long | 2 |
| 12 | PD77 | Nut, 1/4"-20 thread | 16 | 29 | XA65 | Self-tapping screw, no. 8 x 1/2" long | 5 |
| 13 | PE3 | Lock washer, 1/4" | 34 | 30 | XD11 | Screw, 1/4"-20 thread x 2" long | 1 |
| 14 | SD109 | Ignition switch tag | 1 | 31 | HF387 | Crank mounting spacer (used only with LO123 air cleaner) | 1 |
| 15 | WE197 | Front panel, standard | 1 | 32 | PK87 | Crank mounting spring clip | 1 |
| | | | | 33 | XA34 | Screw, 1/4"-20 thread x 1/2" long | 11 |

* Not serviced separately.

WE192 Engine House With Fuel Tank At Take-Off End

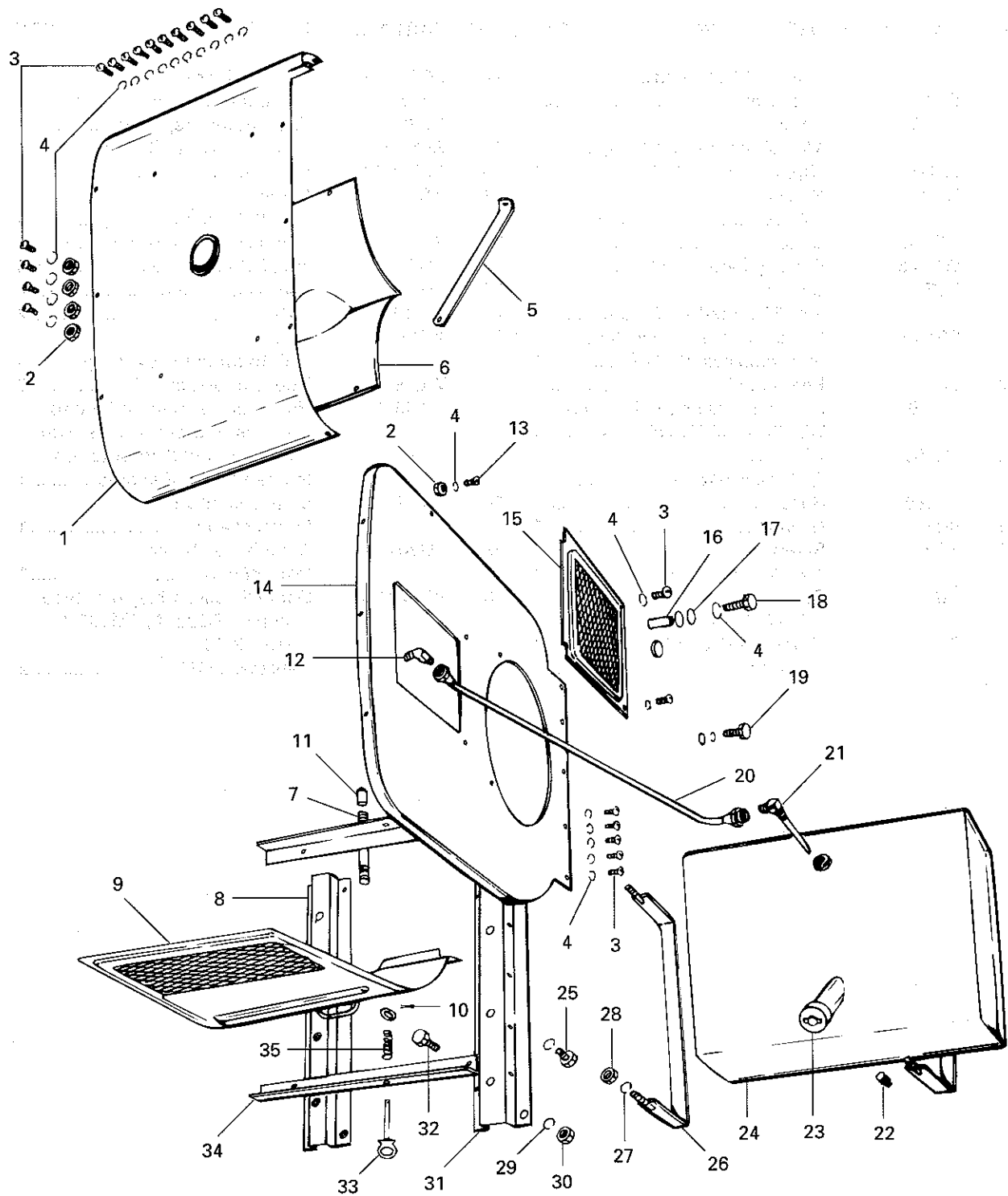


WE192 Engine House With Fuel Tank At Take-Off End

USE WITH MODELS VH4, VH4D (see pg. 8)

| ITEM | PART NO. | DESCRIPTION | QTY | ITEM | PART NO. | DESCRIPTION | QTY |
|------|----------|---|-----|------|----------|--|-----|
| 1 | PD77 | Nut, 1/4"-20 thread | 16 | — | LQ31 | Fuel strainer repair kit | 1 |
| 2 | PE3 | Lock washer, 1/4" | 34 | — | LP19 | Large fuel strainer (optional) ... | 1 |
| 3 | XA33 | Screw, 1/4"-20 thread x 3/8" long | 16 | — | LQ32 | Fuel strainer repair kit | 1 |
| 4 | LJ175 | Nipple, 1-1/4" x 8" long | 1 | 19 | RF1225 | Elbow (replaces RF270) | 1 |
| 5 | XA34 | Screw, 1/4"-20 thread x 1/2" long | 11 | 20 | RM1049A | Fuel line | 1 |
| 6 | WE346 | Canopy | 1 | 21 | XD41 | Screw, 1/2"-13 thread x 1" long | 4 |
| 7 | WE345 | Canopy partition plate | 1 | 22 | WE193A | Engine support, take-off end ... | 1 |
| 8 | XD4 | Screw, 1/4"-20 thread x 1/2" long | 2 | 23 | PD79 | Nut, 3/8"-16 thread | 4 |
| 9 | PG816 | Left side house brace, take-off end (replaces PG800) | 1 | 24 | PE5 | Lock washer, 3/8" | 4 |
| 10 | WE199A | Rear panel | 1 | 25 | WE195 | Side rails | 2 |
| 11 | WE192 | Fuel tank assembly (includes WE192-9, RC77, WE192-4) | 1 | 26 | XD25 | Screw, 3/8"-16 thread x 3/4" long | 4 |
| 12 | PH196 | Washer, 1/4" I.D. x 1/16" thick | 3 | 27 | WE196 | House doors, standard | 2 |
| 13 | HF380 | Spacer | 1 | — | WE196F | House doors, bumped out to clear distributor for units with generator and distributor on left hand side of engine | 1 |
| 14 | PH198 | Grommet | 1 | 28 | WE194A | Engine support, flywheel end | 1 |
| 15 | XD120 | Screw, 1/4"-20 thread x 3-1/4" long | 1 | 29 | PG801 | Right house brace, take-off end | 1 |
| 16 | XD7 | Screw, 1/4"-20 thread x 1" long | 1 | 30 | PG323AS1 | Door clip assembly, wire type (includes PG323A, PM137-1, PH196, XI16) (replaces PG323) | 2 |
| 17 | RF794 | Nipple, 1/8" x 3/4" long | 1 | | | | |
| 18 | LP43 | Small fuel strainer | 1 | | | | |

WE204 Engine House With Underslung Fuel Tank

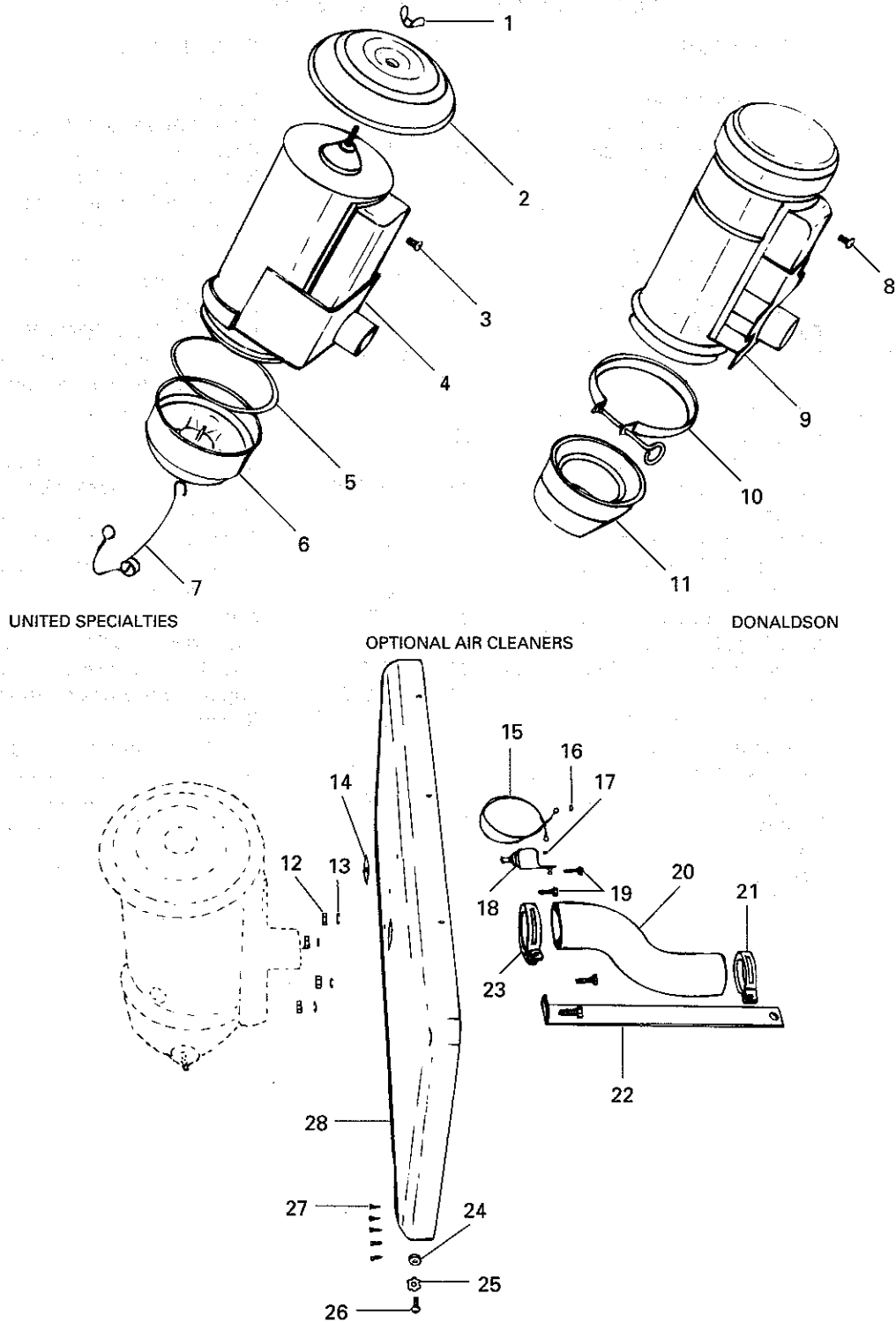


WE204 Engine House With Underslung Fuel Tank

USE WITH MODELS VE4D, VF4D (see pg. 10)

| ITEM | PART NO. | DESCRIPTION | QTY | ITEM | PART NO. | DESCRIPTION | QTY |
|------|----------|--|-----|------|----------|---|-----|
| 1 | WE198A1 | Canopy (beginning with engine serial no. 84249) | 1 | 19 | XD7 | Screw, 1/4"-20 thread x 1" long | 1 |
| — | WE198 | Canopy (to and including engine serial no. 84248) | 1 | 20 | RM900 | Fuel line | 1 |
| 2 | PD77 | Nut, 1/4"-20 thread | 9 | 21 | RM1206C | Suction tube assembly | 1 |
| 3 | XA33 | Screw, 1/4"-20 thread x 3/8" long | 21 | — | RF270 | Elbow (for fuel tanks with built-in suction tube) | 1 |
| 4 | PE3 | Lock washer, 1/4" | 26 | 22 | XK1 | Plug, 1/8" square | 1 |
| 5 | PG401 | House brace, take-off end | 1 | 23 | RC87 | Fuel tank cap | 1 |
| 6 | WE218 | Partition plate | 1 | 24 | WE204S1 | Fuel tank (includes RC87, RM1206C) | 1 |
| 7 | RE1086A | Nipple (replaces RF1086) | 1 | — | WE204AS1 | Fuel tank (filler neck relocated for units with electric starter and generator) | 1 |
| 8 | WE203 | Engine support, flywheel end | 1 | 25 | XD41 | Screw, 1/2"-13 thread x 1" long | 4 |
| 9 | WE209 | House door | 2 | 26 | PG329B | Strap (for fuel tank with 2" corner radius) | 2 |
| — | WE209E | House door, bumped out to clear distributor for units with generator and distributor on left hand side of engine (replaces WE209A) | 1 | — | PG329A | Strap (for fuel tank with 1-1/8" corner radius) | 2 |
| 10 | XI23 | Cotter pin, 1/8" x 3/4" long | 2 | 27 | PE4 | Lock washer, 5/16" | 4 |
| 11 | RF937 | Coupling, 3/8" | 1 | 28 | PD78 | Nut, 5/16"-18 thread | 4 |
| 12 | RF1225 | Elbow (replaces RF320-3) | 1 | 29 | PE5 | Lock washer, 3/8" | 4 |
| 13 | XA34 | Screw, 1/4"-20 thread x 1/2" long | 1 | 30 | PD79 | Nut, 3/8"-16 thread | 4 |
| 14 | WE207A | Rear panel | 1 | 31 | WE202A | Engine support, take-off end ... | 1 |
| 15 | WE211 | Rear panel cover | 1 | 32 | XD25 | Screw, 3/8"-16 thread x 3/4" long | 4 |
| 16 | HF380 | Spacer | 1 | 33 | PG323A | Door clip | 2 |
| 17 | PH196 | Washer, 1/4" I.D. x 1/16" thick | 3 | 34 | WE208 | Side rail | 2 |
| 18 | XD120 | Screw, 1/4"-20 thread x 3-1/4" long | 1 | 35 | PM137 | Door clip spring | 2 |

WE204 Engine House With Underslung Fuel Tank



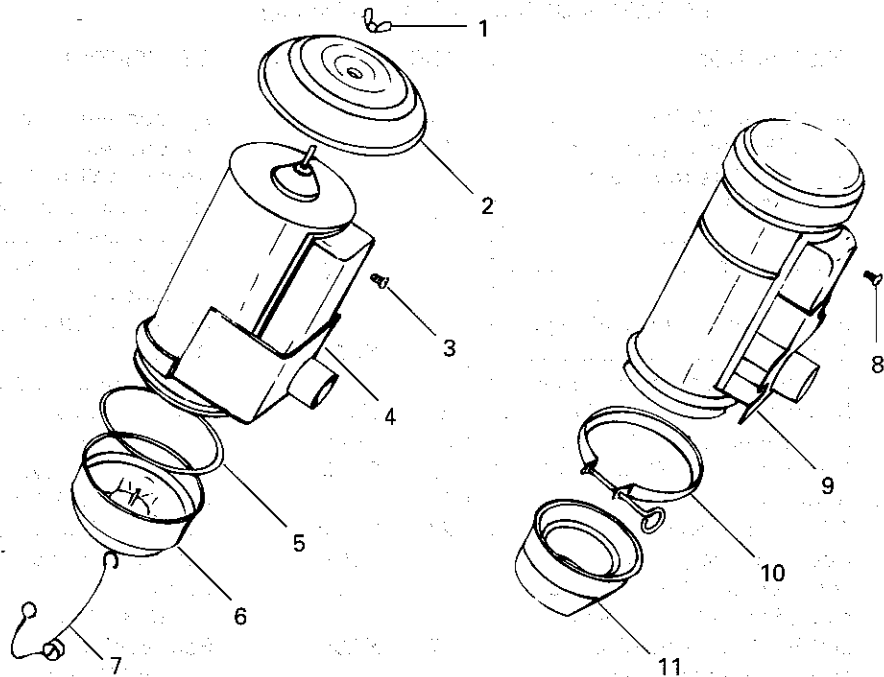
WE204 Engine House With Underslung Fuel Tank

USE WITH MODELS VE4D, VF4D (see pg. 12)

| ITEM | PART NO. | DESCRIPTION | QTY | ITEM | PART NO. | DESCRIPTION | QTY |
|------|----------|--|-----|------|----------|---|-----|
| — | LO66S1 | Air cleaner, United Specialties no. CT50-10505 (obsolete) (for complete replacement use LO158S2) | 1 | 14 | SD109 | Ignition switch tag | 1 |
| 1 | A1317 | Wing nut | 1 | 15 | YL352-21 | Ground wire (replaces YL181) | 1 |
| 2 | A10713 | Top cap assembly | 1 | 16 | PD152 | Nut, no. 6-32 thread | 1 |
| 3 | A10962 | Screw | 1 | 17 | PE72 | Lock washer | 1 |
| 4 | C10724 | Body assembly (less fittings) ... | 1 | 18 | YC9FS1 | Ground switch assembly (includes 14, 17) (replaces YC9A, YC9C) | 1 |
| 5 | A9986 | Gasket | 1 | 19 | XD6 | Screw, 1/4"-20 thread x 3/4" long | 4 |
| 6 | A10141 | Oil cup and baffle assembly | 1 | 20 | LL64 | Rubber elbow | 1 |
| 7 | B9982 | Roller and bail assembly | 1 | 21 | LK11 | Hose clamp, 1-7/8" I.D. | 1 |
| — | LO158S2 | Air cleaner, 4-3/8" diameter, Donaldson no. FGA04-2512 | 1 | 22 | PG402 | House brace, flywheel end | 1 |
| 8 | — — — | Support screw, 5/16"-18 thread x 1/2" long | 1 | 23 | LK8 | Hose clamp, 2-1/8" I.D. | 1 |
| 9 | * LO97 | Body assembly (order complete air filter) (replaced by and interchangeable with LO158S2) (P10498 oil cup assembly must be used on LO97 for service) | 1 | 24 | PD115 | Nut, no. 10-32 thread | 2 |
| 10 | P9595 | Clamp assembly | 1 | 25 | PE45 | Lock washer, no. 10 | 2 |
| 11 | P14889 | Outer oil cup | 1 | 26 | XA8 | Screw, no. 10-32 thread x 1/2" long | 2 |
| — | P15463 | Inner oil cup (not illustrated) ... | 1 | 27 | XA65 | Self-tapping screw, no. 8 x 1/2" long | 5 |
| 12 | PD77 | Nut, 1/4"-20 thread | 9 | 28 | WE206 | Front panel, standard | 1 |
| 13 | PE3 | Lock washer, 1/4" | 26 | — | WE206-6 | Front panel, with additional holes for switch and ammeter for electric starting units | 1 |

* Not serviced separately.

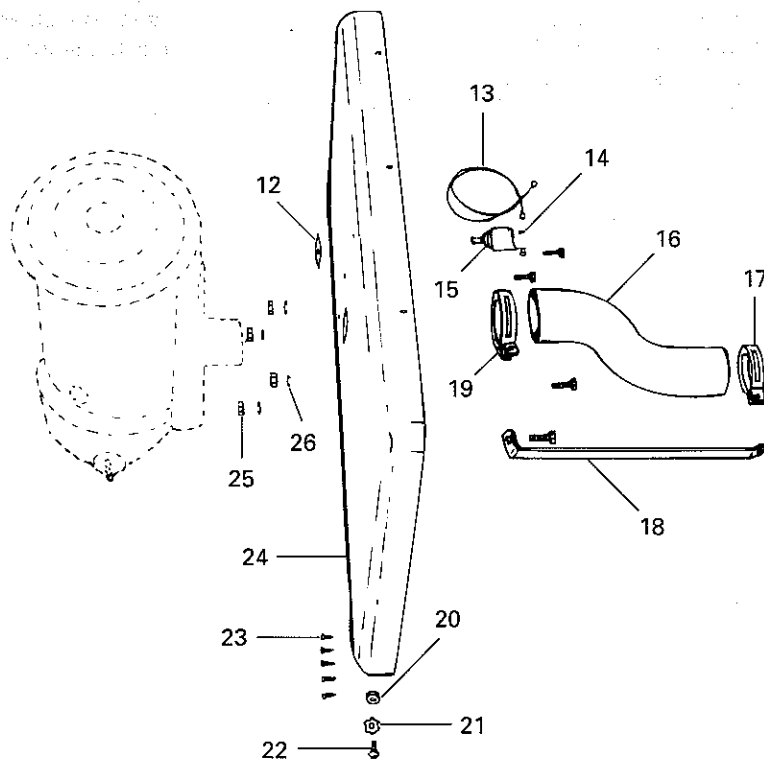
WE204 Engine House With Underslung Fuel Tank



UNITED SPECIALTIES

DONALDSON

OPTIONAL AIR CLEANERS



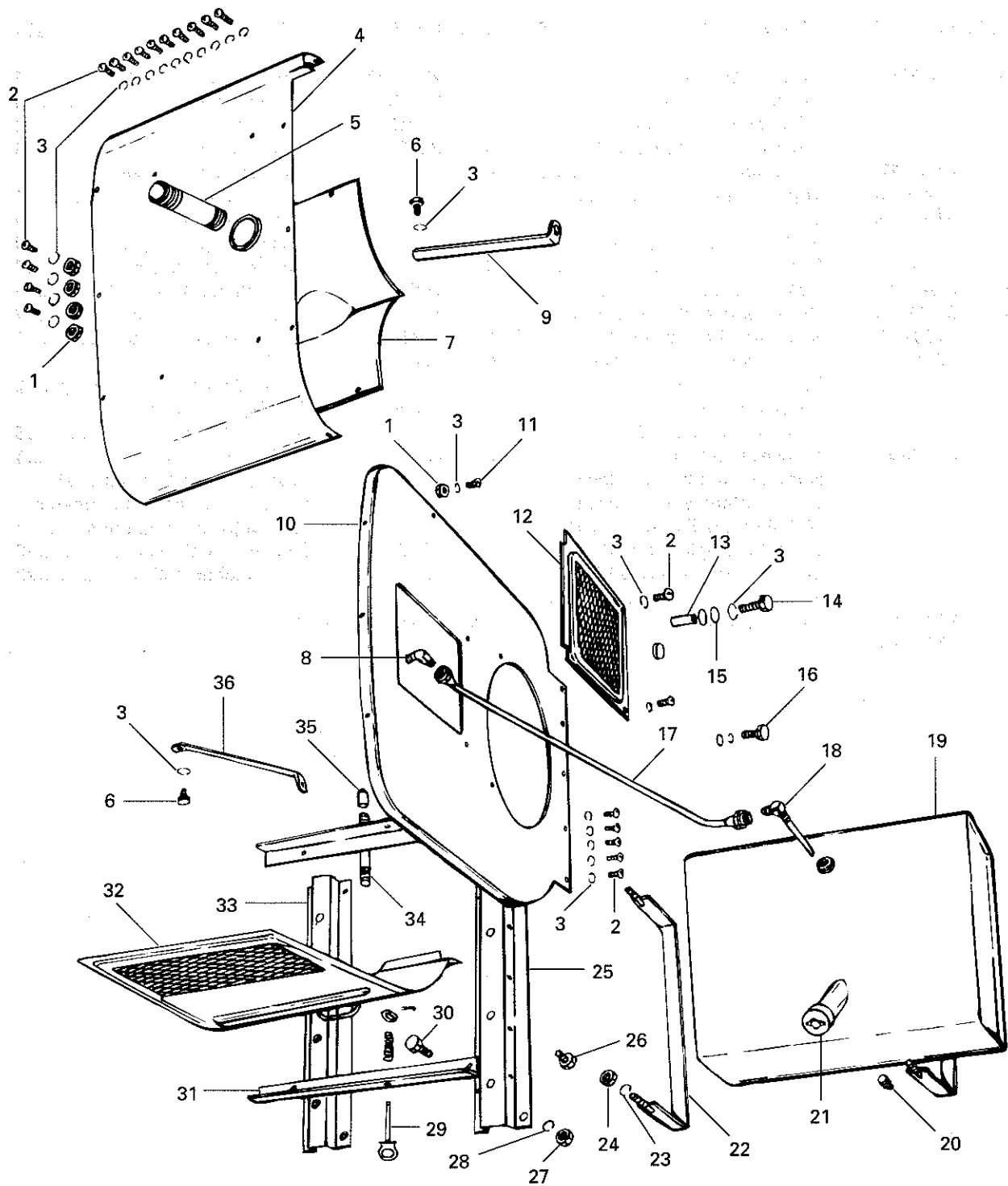
WE204 Engine House With Underslung Fuel Tank

USE WITH MODELS VH4, VH4D (see pg. 14)

| ITEM | PART NO. | DESCRIPTION | QTY | ITEM | PART NO. | DESCRIPTION | QTY |
|------|-----------|---|-----|------|----------|---|-----|
| — | LO123S1 | Air cleaner, United Specialties no. 47D1 (obsolete) (for complete replacement use LO158S2) | 1 | — | 22P15463 | Inner oil cup (not illustrated) ... | 1 |
| 1 | 81A1317 | Wing nut | 1 | 12 | SD109 | Ignition switch tag | 1 |
| 2 | 81A10713 | Top cap assembly | 1 | 13 | YL352-21 | Ignition wire | 1 |
| 3 | 81A10962 | Screw 5/16"-18 thread x 1/2" long | 1 | 14 | PE72 | Lock washer | 1 |
| 4 | — — — | Body assembly | 1 | 15 | YC9FS1 | Ignition switch assembly (includes 12, 14) | 1 |
| 5 | 81A9986 | Gasket | 1 | 16 | LL64 | Rubber elbow | 1 |
| 6 | 81-335B1 | Oil cup and baffle assembly | 1 | 17 | LK10 | Hose clamp, 2" I.D. | 1 |
| 7 | 81B9982 | Roller and bail assembly | 1 | 18 | PG799 | House brace, flywheel end | 1 |
| — | LO158S2 | Air cleaner, 4-3/8" diameter, Donaldson no. FGA04-2512 | 1 | 19 | LK8 | Hose clamp, 2-1/8" I.D. | 1 |
| 8 | — — — | Support screw, 5/16"-18 thread x 1/2" long | 1 | 20 | PD115 | Nut, no. 10-32 thread | 2 |
| 9 | * LO120S1 | Body assembly (order complete air filter) (replaced by and interchangeable with LO158S2) (22 P10498 oil cup assembly [replaces P16457] must be used on LO120S1 for service) | 1 | 21 | PE45 | Lock washer, no. 10 | 2 |
| 10 | 22P9595 | Clamp assembly | 1 | 22 | XA8 | Screw, no. 10-32 thread x 1/2" long | 2 |
| 11 | 22P14889 | Outer oil cup | 1 | 23 | XA65 | Self-tapping screw, no. 8 x 1/2" long | 5 |
| | | | | 24 | WE206 | Front panel, standard | 1 |
| | | | | — | WE206-6 | Front panel, with additional holes for switch and ammeter for electric starting units | 1 |
| | | | | 25 | PD77 | Nut, 1/4"-20 thread | 10 |
| | | | | 26 | PE3 | Lock washer, 1/4" | 29 |

* Not serviced separately.

WE204 Engine House With Underslung Fuel Tank



WE204 Engine House With Underslung Fuel Tank

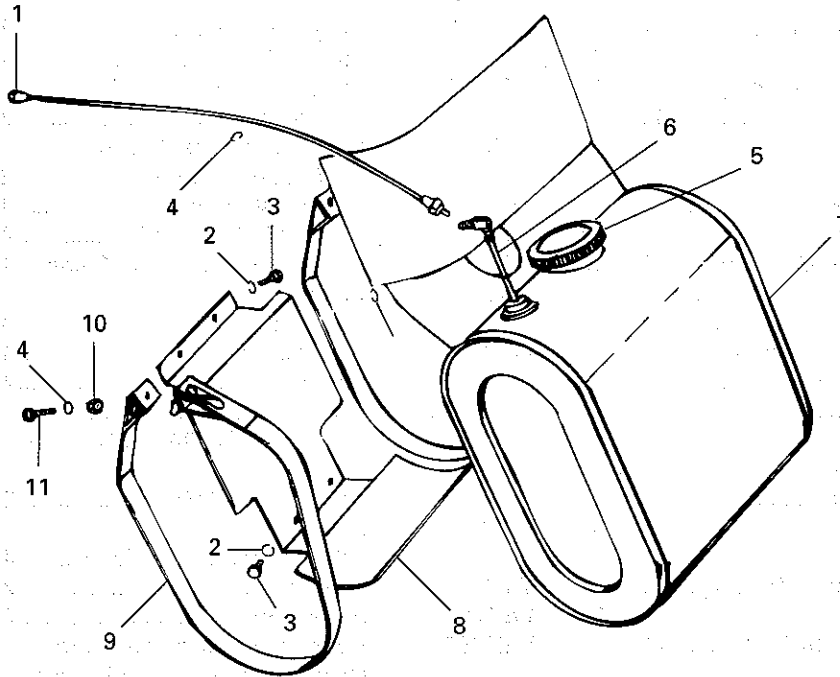
USE WITH MODELS VH4, VH4D (see pg. 16)

| ITEM | PART NO. | DESCRIPTION | QTY | ITEM | PART NO. | DESCRIPTION | QTY |
|------|----------|---|-----|------|----------|---|-----|
| 1 | PD77 | Nut, 1/4"-20 thread | 10 | 20 | XK1 | Plug, 1/8" square | 1 |
| 2 | XA33 | Screw, 1/4"-20 thread x 3/8" long | 21 | 21 | RC87 | Fuel tank cap | 1 |
| 3 | PE3 | Lock washer, 1/4" | 29 | 22 | PG329B | Strap, for fuel tank with 2" corner radius | 2 |
| 4 | WE346 | Canopy | 1 | — | PG329A | Strap, for fuel tank with 1-1/8" corner radius | 2 |
| 5 | LJ279 | Pipe nipple, 1-1/4" x 3-1/2" W.I. | 1 | 23 | PE4 | Lock washer, 5/16" | 4 |
| 6 | XD4 | Screw, 1/4"-20 thread x 1/2" long | 2 | 24 | PD78 | Nut, 5/16"-18 thread | 4 |
| 7 | WE345 | Partition plate | 1 | 25 | WE202A | Engine support, take-off end ... | 1 |
| 8 | RF1225 | Elbow | 1 | 26 | XD41 | Screw, 1/2"-13 thread x 1" long | 4 |
| 9 | PG816 | Left house brace, take-off end (replaces PG800) | 1 | 27 | PD79 | Nut, 3/8"-16 thread | 4 |
| 10 | WE207A | Rear panel | 1 | 28 | PE5 | Lock washer, 3/8" | 4 |
| 11 | XA34 | Screw, 1/4"-20 thread x 1/2" long | 2 | 29 | PG323AS1 | Door clip assembly, wire type (includes PG323A, PM137-1, PH196, XI16) (replaces PG323) | 2 |
| 12 | WE211 | Rear panel cover | 1 | 30 | XD25 | Screw, 3/8"-16 thread x 3/4" long | 4 |
| 13 | HF380 | Spacer | 1 | 31 | WE208 | Side rail | 2 |
| 14 | XD120 | Screw, 1/4"-20 thread x 3-1/4" long | 1 | 32 | WE209 | House door | 2 |
| 15 | PH196 | Washer, 1/4" I.D. x 1/16" thick | 3 | — | WE209E | House door, bumped out to clear distributor for units with generator and distributor on left hand side of engine | 1 |
| 16 | XD7 | Screw, 1/4"-20 thread x 1" long | 1 | 33 | WE203 | Engine support, flywheel end | 1 |
| 17 | RM900 | Fuel line | 1 | 34 | RF1086A | Nipple | 1 |
| 18 | RM1206C | Suction tube assembly | 1 | 35 | RF937 | Coupling, 3/8" | 1 |
| 19 | WE204S1 | Fuel tank (includes RC87, RM1206C) | 1 | 36 | PG801 | Right house brace, take-off end | 1 |
| — | WE204AS1 | Fuel tank (filler neck relocated for units with electric starter and generator) | 1 | | | | |

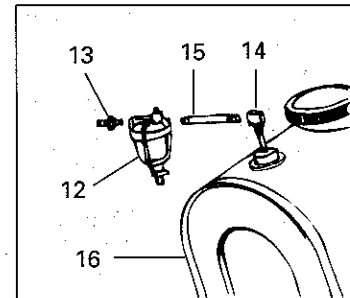
WE412S1, WE412S2 Fuel Tank Group

USE WITH MODELS W2-880, THD, TJD

S/S WE428 PLASTIC

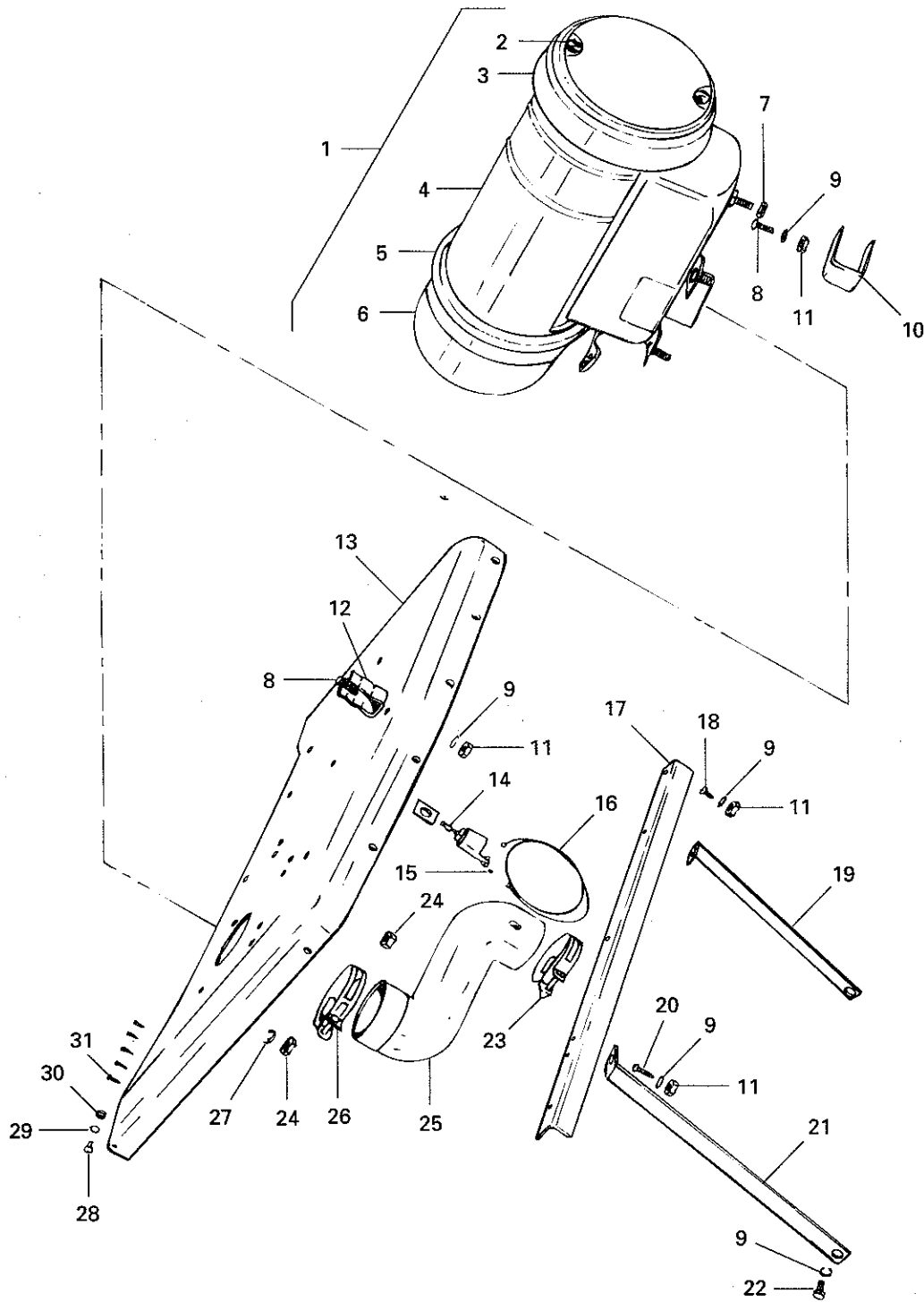


OPTIONAL
FUEL TANK MOUNTING
WITH
ELECTRIC STARTER



| ITEM | PART NO. | DESCRIPTION | QTY | ITEM | PART NO. | DESCRIPTION | QTY |
|------|----------|---|-----|------|----------|--|-----|
| 1 | RM477 | Fuel line, 18" long, standard (includes nuts) | 1 | 11 | XA52 | Screw, 1/4"-20 thread x 1-1/2" long | 2 |
| — | RM892 | Fuel line, 22" long (use with starting motor and side mount tank) | 1 | 12 | LP19B | Large fuel strainer (obsolete) (electric starter engines, mounted to tank) | 1 |
| 2 | PE4 | Lock washer, 5/16" | 4 | — | LQ32 | Repair kit, LP19B (includes bowl, gasket, screen) | 1 |
| 3 | XD13 | Screw, 5/16"-18 thread x 1/2" long (for bracket BK79A) ... | 3 | 13 | RF269 | Straight fitting, 1" fuel strainer (when mounted to tank) | 1 |
| — | XD15 | Screw, 5/16"-18 thread x 3/4" long (for bracket BK80) ... | 3 | 14 | RM1211 | Suction tube (obsolete) (for electric starter engines and fuel strainer mounted to tank) | 1 |
| 4 | PE3 | Lock washer, 1/4" | 2 | 15 | RF948 | Pipe nipple, 1/8"x 3" long | 1 |
| 5 | RC112 | Fuel tank cap | 1 | 16 | WE412S2 | Tank assembly (includes RM1211, for engines with electric starter and fuel strainer mounted to tank) | 1 |
| 6 | RM1206 | Suction tube | 1 | | | | |
| 7 | WE412S1 | Fuel tank assembly (includes 5,6) | 1 | | | | |
| 8 | BK79A | Bracket, standard | 1 | | | | |
| — | BK80 | Bracket (for starting motor) | 1 | | | | |
| 9 | PG488 | Fuel tank strap | 2 | | | | |
| 10 | PD77 | Nut, 1/4"-20 thread | 2 | | | | |

**WE250 Engine House With Fuel Tank At Take-Off End
Or WE277 Underslung Fuel Tank**



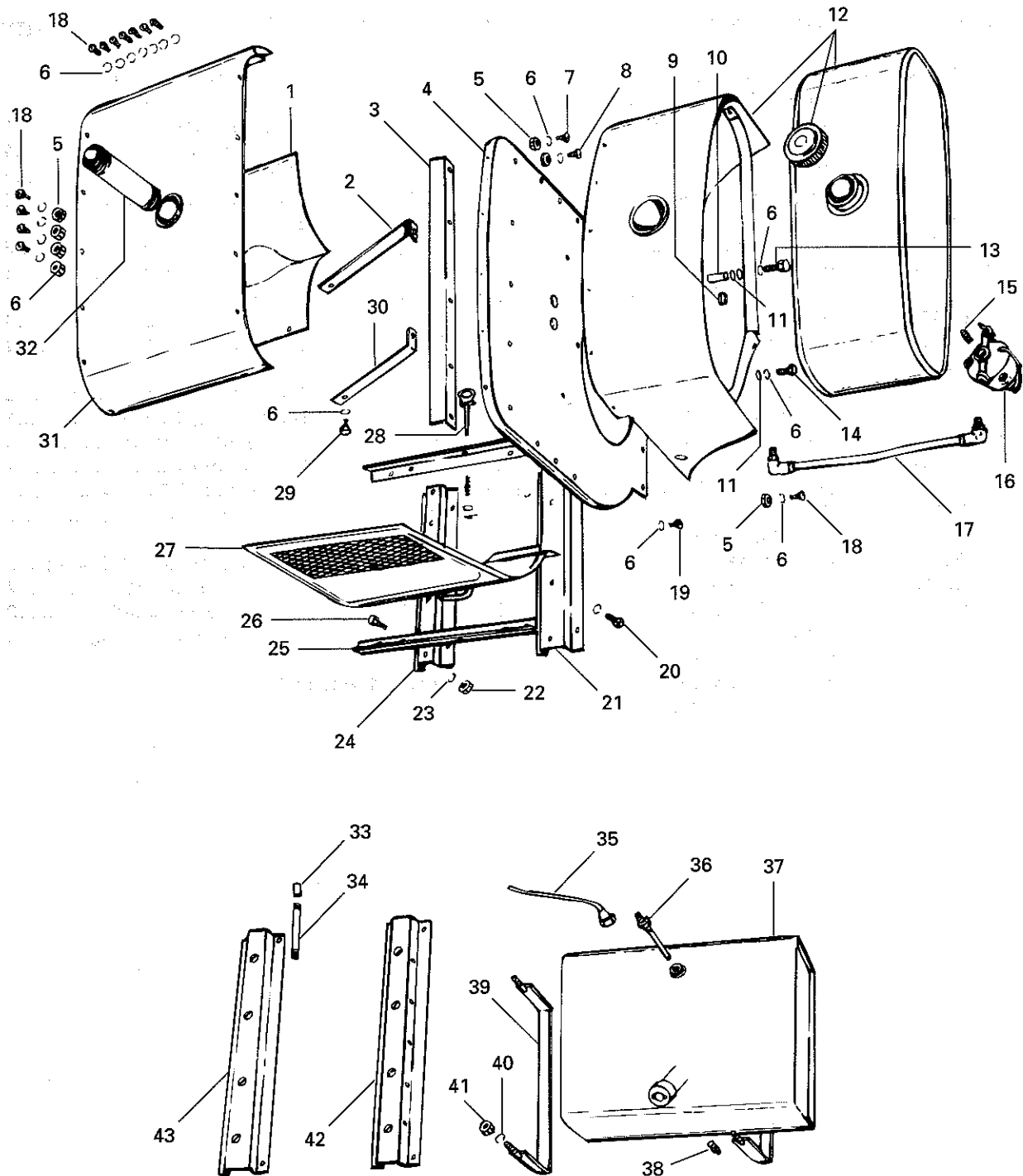
**WE250 Engine House With Fuel Tank At Take-off End
Or WE277 Underslung Fuel Tank**

USE WITH MODEL VG4D (see pg. 19)

| ITEM | PART NO. | DESCRIPTION | QTY | ITEM | PART NO. | DESCRIPTION | QTY |
|------|------------|--|-----|------|----------|---|-----|
| 1 | LO160S1 | Air cleaner, Donaldson no. FGA05-2523 (service parts include 2-6) (replaces LO89S1, Donaldson no. A5521 and FCA06-5210) (interchangeable) | 1 | 14 | YC9FS1 | Ground switch assembly (includes item 15; includes SD109) | 1 |
| 2 | 22P2274 | Wing nut | 2 | 15 | PE72 | Lock washer | 1 |
| 3 | 22P8730 | Hood assembly | 1 | 16 | YL352-23 | Magneto ground wire | 1 |
| 4 | * — | Body assembly (order complete air cleaner) | 1 | 17 | PH525 | Angle | 1 |
| 5 | 22P2706 | Retaining clamp assembly | 1 | 18 | XA35 | Screw, 1/4"-20 thread x 5/8" long | 6 |
| 6 | 22P10-2793 | Outer oil cup | 1 | 19 | PG521 | Brace, magneto side | 1 |
| — | 22P17242 | Inner oil cup | 1 | 20 | XA36 | Screw, 1/4"-20 thread x 3/4" long | 4 |
| — | SD161 | Instruction decal | 1 | 21 | PG522 | Brace, right hand side | 1 |
| — | 22P8733 | Oil cup assembly (must be used on LO89S1 for service) | 1 | 22 | XD5 | Screw, 1/4"-20 thread x 5/8" long | 2 |
| 7 | PH77A | Washer, 5/6" I.D. x 1/16" thick | 1 | 23 | LK24 | Hose clamp, 2-1/4" I.D. | 1 |
| 8 | XA34 | Screw, 1/4"-20 thread x 1/2" long | 29 | 24 | PD78 | Nut, 5/16"-18 thread | 9 |
| 9 | PE3 | Lock washer, 1/4" | 48 | 25 | LL88A | Rubber elbow | 1 |
| 10 | PG491 | Starting crank bracket | 1 | 26 | LK9 | Hose clamp, 2-3/8" I.D. | 1 |
| 11 | PD77 | Nut, 1/4"-20 thread | 24 | 27 | PE4 | Lock washer, 5/16" | 9 |
| 12 | PK87 | Crank mounting clip | 1 | 28 | XA8 | Screw, no. 10-32 thread x 1/2" long | 2 |
| 13 | WE248 | Front panel, standard | 1 | 29 | PE45 | Lock washer, no. 10 | 2 |
| — | WE248-3 | Front panel, with additional holes for switch and ammeter for electrical units | 1 | 30 | PD115 | Nut, no. 10-32 thread | 2 |
| | | | | 31 | XA65 | Screw, no. 8 x 1/2" long | 5 |

* Not serviced separately.

**WE250 Engine House With Fuel Tank At Take-Off End
Or WE277 Underslung Fuel Tank**

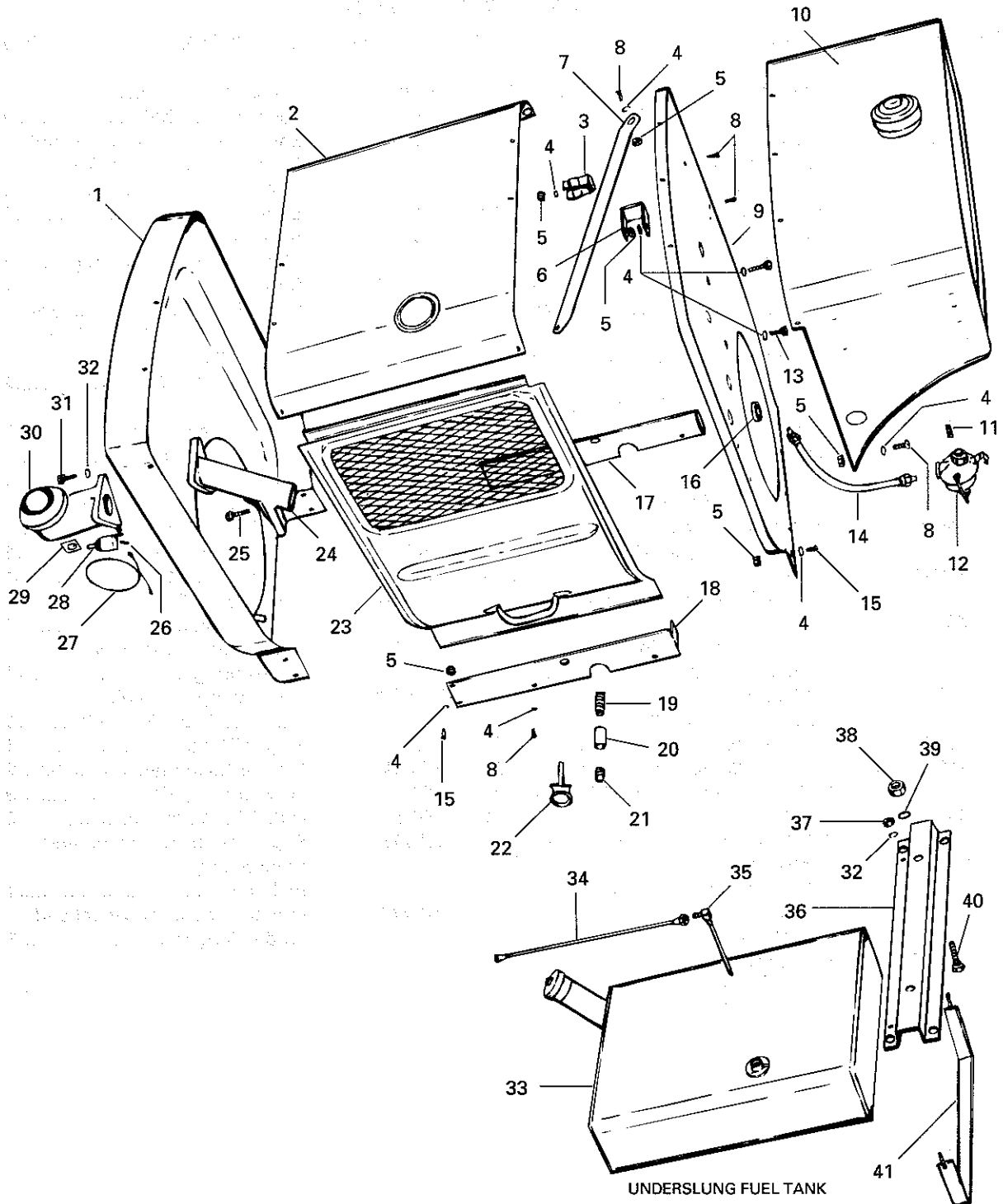


**WE250 Engine House With Fuel Tank At Take-Off End
Or WE277 Underslung Fuel Tank**

USE WITH MODEL VG4D (see pg. 21)

| ITEM | PART NO. | DESCRIPTION | QTY | ITEM | PART NO. | DESCRIPTION | QTY |
|------|-----------|--|-----|------|----------|---|-----|
| 1 | WE249A | Heat deflector | 1 | 22 | PD79 | Nut, 3/8"-16 thread | 4 |
| 2 | PG523 | Rear panel brace, left side | 1 | 23 | PE5 | Lock washer, 3/8" | 4 |
| 3 | PG526 | Angle | 1 | 24 | WE254 | Engine support, flywheel end (for units with fuel tank at take-off end) | 1 |
| 4 | WE251A | Rear panel for unit with tank at take-off end | 1 | 25 | WE255 | Side rail | 2 |
| — | WE251A2 | Rear panel, with hole to clear fuel pump for units with underslung fuel tank | 1 | 26 | XD25 | Screw, 3/8"-16 thread x 3/4" long | 4 |
| 5 | PD77 | Nut, 1/4"-20 thread | 24 | 27 | WE252 | Door | 2 |
| 6 | PE3 | Lock washer, 1/4" | 48 | 28 | PG323AS1 | Door clip assembly, wire type (includes PG323A, PM137-1, PH196, XI16) (replaces PG323) | 2 |
| 7 | XA35 | Screw, 1/4"-20 thread x 5/8" long | 6 | 29 | XD5 | Screw, 1/4"-20 thread x 5/8" long | 2 |
| 8 | XA36 | Screw, 1/4"-20 thread x 3/4" long | 4 | 30 | PG524 | Rear panel brace, right | 1 |
| 9 | PH198 | Grommet | 1 | 31 | WE247A | Canopy | 1 |
| 10 | HF380 | Spacer | 1 | 32 | LJ337 | Pipe nipple, 1-1/2" x 9-1/4" long | 1 |
| 11 | PH196 | Washer, 1/4" I.D. x 1/16" thick | 3 | 33 | XK117 | Coupling, 1/2" W.I. | 1 |
| 12 | WE250 | Fuel tank assembly, (includes RC77, WE250-1) | 1 | 34 | LJ295 | Pipe nipple, 1/2" x 4" long | 1 |
| 13 | XD145 | Screw, 1/4"-20 thread x 3-1/2" long | 1 | 35 | RM450 | Fuel line, 20-3/4" long (underslung tank) | 1 |
| 14 | XD7 | Screw, 1/4"-20 thread x 1" long | 1 | 36 | RM1209 | Suction tube assembly (underslung tank) | 1 |
| 15 | RF794 | Nipple, 1/8" x 3/4" long | 1 | 37 | WE277S1 | Underslung fuel tank (includes RC87, RM1209) | 1 |
| 16 | LP19 | Fuel strainer, Tillotson no. OW418 | 1 | 38 | XK1 | Plug, 1/8" square | 1 |
| — | LQ32 | Fuel strainer repair kit | 1 | 39 | PG454 | Tank strap (underslung tank) ... | 2 |
| 17 | RM1049GS1 | Fuel line, 23" long (includes RF1225) (replaces RM1202A) ... | 1 | 40 | PE4 | Lock washer, 5/16" | 9 |
| 18 | XA34 | Screw, 1/4"-20 thread x 1/2" long | 29 | 41 | PD78 | Nut, 5/16"-18 thread | 9 |
| 19 | XA33 | Screw, 1/4"-20 thread x 3/8" long | 5 | 42 | WE275 | Engine support, take-off end (underslung fuel tank) | 1 |
| 20 | XD51 | Screw, 5/8"-11 thread x 1-1/4" long | 4 | 43 | WE276 | Engine support, flywheel end (underslung tank) | 1 |
| 21 | WE253 | Engine support, take-off end (for units with fuel tank at take-off end) | 1 | | | | |

**WE304 Power Unit With Fuel Tank At Take-Off End
Or Underslung Fuel Tank (Obsolete)**



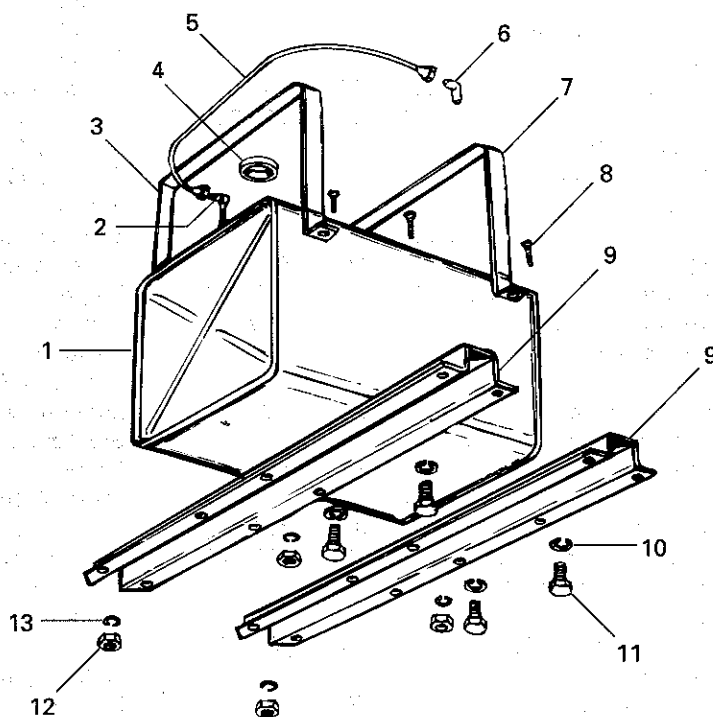
WE304 Power Unit With Fuel Tank At Take-Off End Or Underslung Fuel Tank (Obsolete)

USE WITH MODELS TH, THD, TJD (see pg. 23)

| ITEM | PART NO. | DESCRIPTION | QTY | ITEM | PART NO. | DESCRIPTION | QTY |
|------|----------|--|-----|------|----------|---|-----|
| 1 | WE299 | Front panel, standard | 1 | 22 | PG323AS1 | Door clip assembly, wire type (includes PG323A, PM137-1, PH196, XI16) (replaces PG323-1) | 2 |
| — | WE299-1 | Front panel, with holes for switch and ammeter for electrical unit | 1 | 23 | WE262 | House door | 2 |
| 2 | WE257A | Canopy | 1 | 24 | B1-292S1 | Air cleaner connection assem- bly, TH, THD (includes BI292, SA52, LO84C) | 1 |
| 3 | PK87 | Clip | 1 | 25 | XD19 | Screw, 5/16"-18 thread x 1-1/4" long | 1 |
| 4 | PE3 | Lock washer, 1/4" | 34 | 26 | PE72 | Lock washer | 1 |
| 5 | PD77 | Nut, 1/4"-20 thread | 16 | 27 | YL352-16 | Magneto ground wire | 1 |
| 6 | PG491 | Bracket | 1 | 28 | YC9FS1 | Ground switch assembly (includes 26, 29) (replaces YC9C) | 1 |
| 7 | PG528 | Brace | 1 | 29 | SD109 | Ignition switch tag | 1 |
| 8 | XA34 | Screw, 1/4"-20 thread x 1/2" long | 27 | 30 | BI176-5 | Bracket | 1 |
| 9 | WE261A | Rear panel | 1 | 31 | XD17 | Screw, 5/16"-18 thread x 1" long | 3 |
| 10 | WE260A | Fuel tank assembly, take-off end (includes RC77, WE260A1, WE260A2) | 1 | 32 | PE4 | Lock washer, 5/16" | 7 |
| 11 | RF794 | Pipe nipple, 1/8" x 3/4" long | 1 | 33 | WE304S1 | Underslung fuel tank assembly (includes item 35; includes RC87, WE304) | 1 |
| 12 | LP19 | Large fuel strainer, with shut-off | 1 | 34 | RM773A | Fuel line, 17" long (underslung tank) (replaces RM391) | 1 |
| — | LP43 | Small fuel strainer, mounted to fuel pump for units with underslung tank | 1 | 35 | RM1206D | Suction tube assembly (underslung tank) | 1 |
| 13 | XA36 | Screw, 1/4"-20 thread x 3/4" long | 2 | 36 | WE273A | Engine support (underslung tank) | 2 |
| 14 | RM1049 | Flexible fuel line, tank at take-off end (replaces RM1203A) | 1 | 37 | PD78 | Nut, 5/16"-18 thread | 4 |
| 15 | XA34 | Screw, 1/4"-20 thread x 1/2" long | 6 | 38 | PD81 | Nut, 1/2"-13 thread | 4 |
| 16 | PH198 | Grommet | 1 | 39 | PE7 | Lock washer, 1/2" | 4 |
| 17 | WE301 | Left side rail | 1 | 40 | XD44 | Screw, 1/2"-13 thread x 1-3/4" long | 4 |
| 18 | WE300 | Right side rail | 1 | 41 | PG452 | Tank strap (underslung tank) ... | 2 |
| 19 | RF1186 | Pipe nipple, 3/8" x 1-1/2" long | 1 | | | | |
| 20 | RF937 | Pipe coupling, 3/8" | 1 | | | | |
| 21 | XK3 | Pipe plug, 3/8" square | 1 | | | | |

WE427S1, WE278S1 Side Mount Fuel Tanks (Obsolete)

USE WITH MODEL VG4D



| ITEM | PART NO. | DESCRIPTION | QTY | ITEM | PART NO. | DESCRIPTION | QTY |
|------|----------|--|-----|------|----------|--|-----|
| 1 | WE427S1 | Fuel tank, 8.5 gallon (includes 2, 4) (replaces WE278S1) | 1 | 8 | XD27 | Screw, 3/8"-16 thread x 1" long | 4 |
| 2 | RM1206A | Suction tube assembly | 1 | 9 | WE279 | Engine support | 2 |
| 3 | PH244A | Felt | 2 | — | WE281 | Engine support, for engines with electric starter | 4 |
| 4 | RC77 | Cap | 1 | 10 | PE37 | Lock washer, 5/8" | 4 |
| 5 | RM822 | Fuel line, 27-1/4" long | 1 | 11 | XD51 | Screw, 5/8"-11 thread x 1-1/4" long | 4 |
| — | RM524 | Fuel line, 31-3/4" long, for engines with electric starter | 1 | 12 | PD79 | Nut, 3/8"-16 thread | 4 |
| 6 | RF1225 | Elbow | 1 | 13 | PE5 | Lock washer, 3/8" | 4 |
| 7 | PG455 | Strap | 2 | | | | |