

**113900 to 113999**

# Illustrated Parts List

## Model Series

# 113900 to 113999

## NON-COMPLIANCE

TYPE NUMBERS  
0015 through 0017  
0051, 0052, 0117,  
0120  
0130 through 0148  
0156, 0158, 0160

### TO FIND

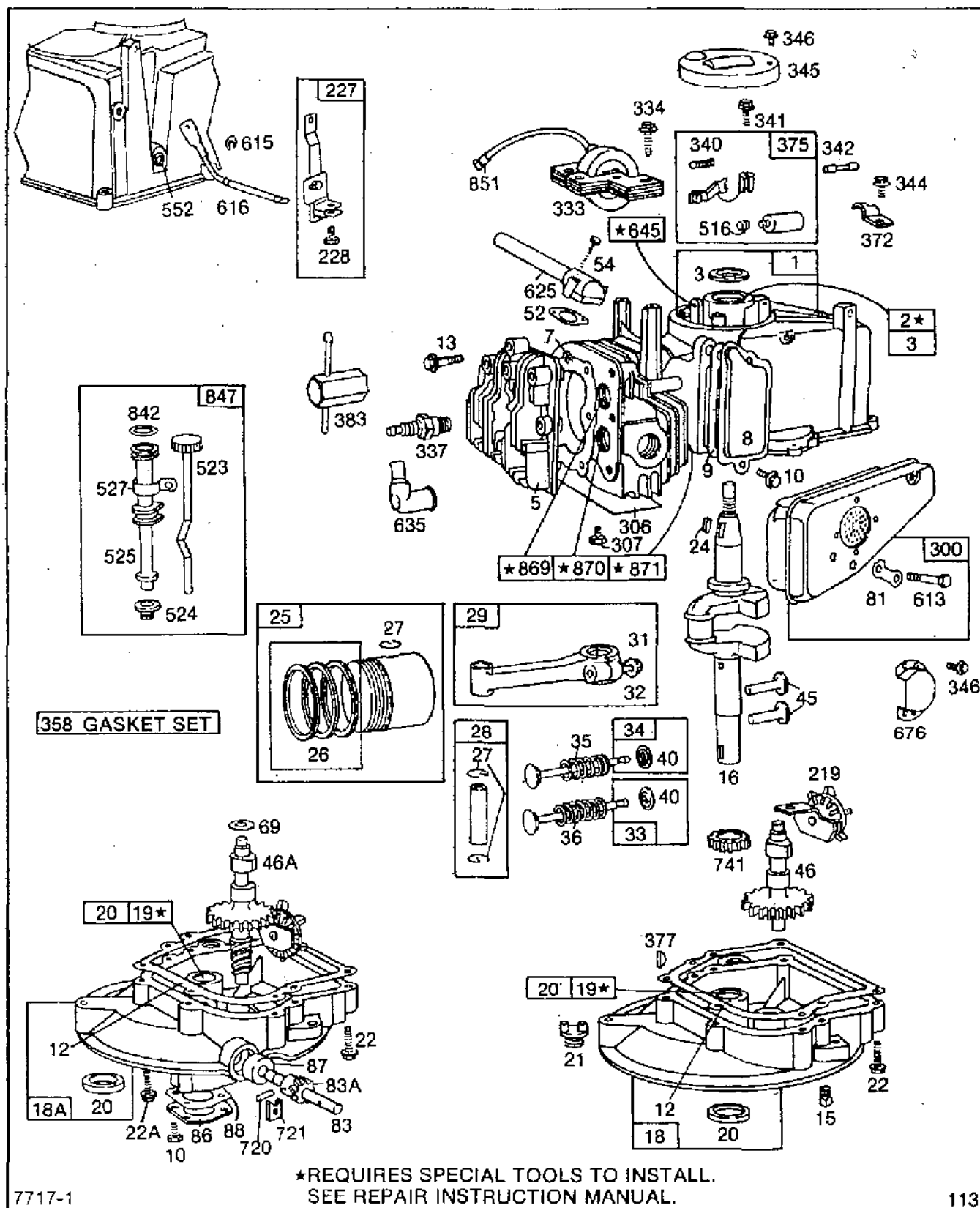
**THE CORRECT NUMBER OF THE PART YOU NEED:**

**FOLLOW THE INSTRUCTIONS BELOW**

- A. Refer to Engine Model, Type and Code Number that is stamped on the blower housing of engine. Engine type numbers such as 012301 are listed herein only as 0123. The two digits (01 or 02, etc.) to the right of the space are not needed for parts identification. Then use the Illustrated Parts List covering the Model Series.
- B. Refer to Illustrated Parts section and compare the old part with illustration. The number on the illustration is the Reference Number. Assemblies include all parts shown in frames. All parts shown in assembly frames on which individual reference numbers are given can be purchased separately.
- C. After the Reference Number has been identified, refer to the Numerical Parts List, where Reference and Master Part Number are listed. **THE MASTER PART IS USED ON ALL TYPE NUMBERS EXCEPT THOSE TYPE NUMBERS UNDER "NOTE"**.
- D. If a "Note" appears below the Master Part Number, this means that this part differs from the Master Part for certain types. If the Type number is listed under "Note", order the part referred to.
- E. If the Engine Type Number does not appear after any part number listed under "Note", use the Master Part Number.
- F. For Type Numbers higher than those covered by this book, please refer to the factory if you are unable to identify the part by comparison.



# 113900 to 113999

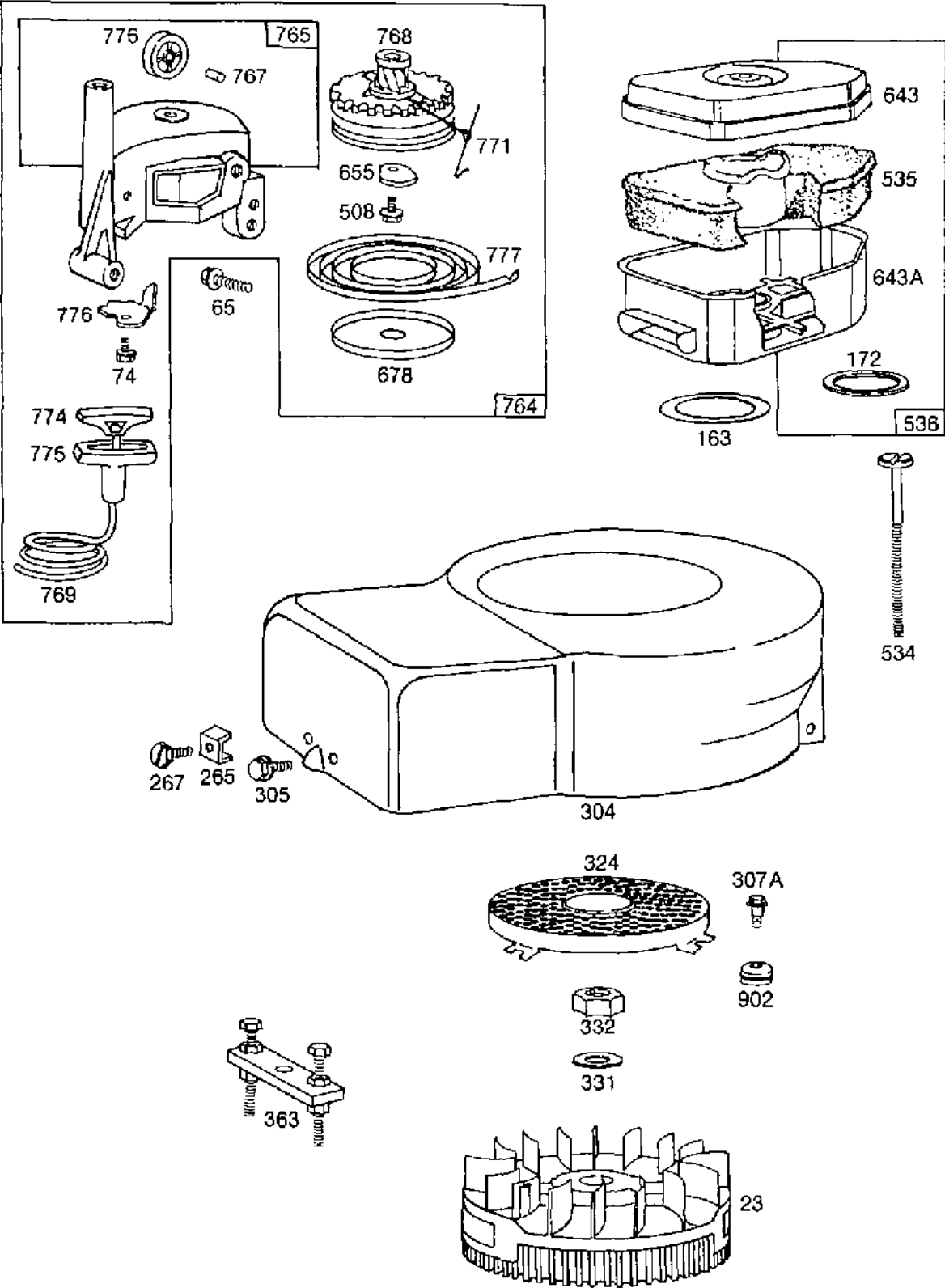


7717-1

113

Assemblies include all parts shown in frames.

113900 to 113999

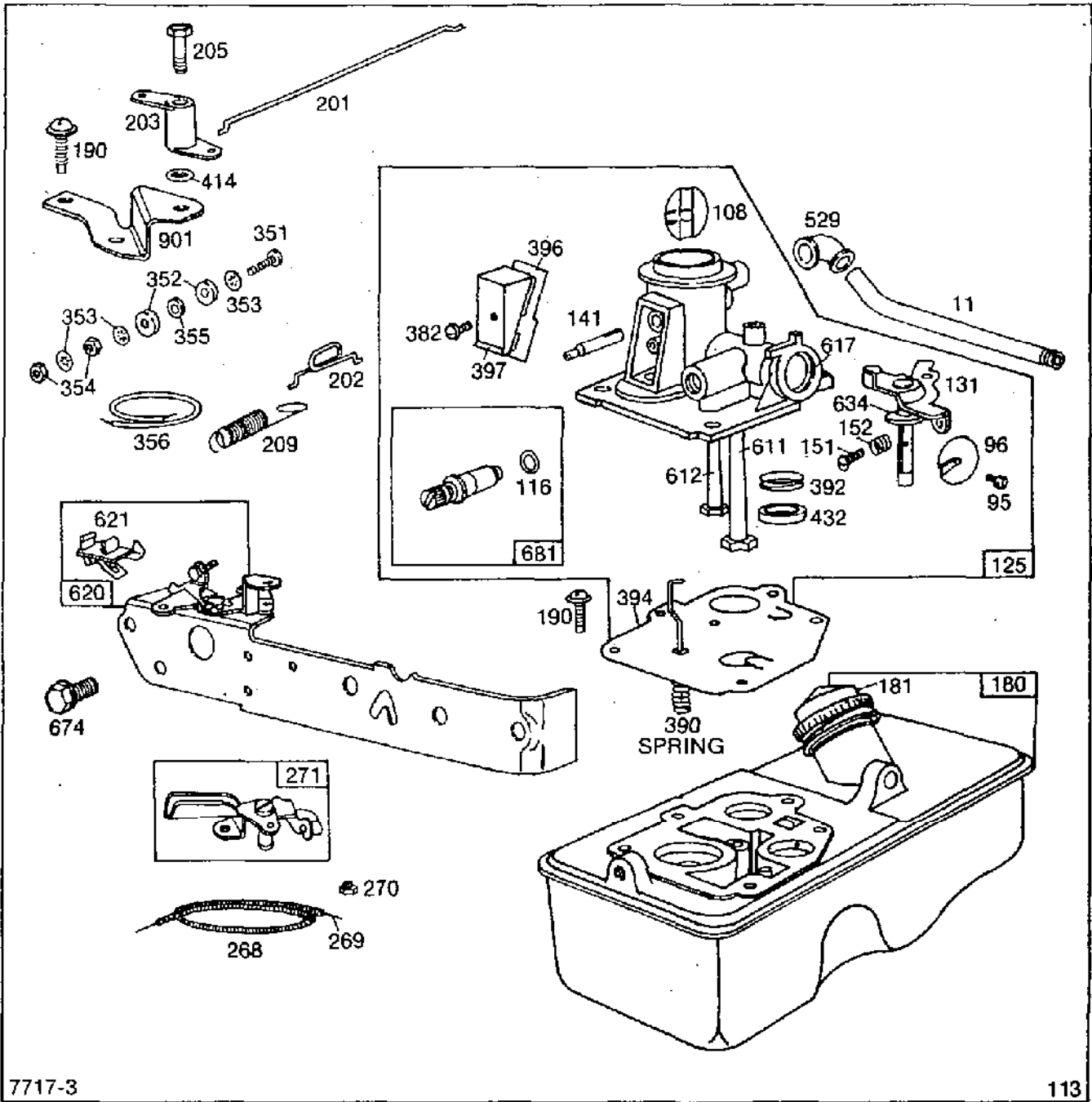


7717-2

113

Assemblies include all parts shown in frames.

# 113900 to 113999



Assemblies include all parts shown in frames.

# 113900 to 113999

REF. NO.	PART NO.	DESCRIPTION	REF. NO.	PART NO.	DESCRIPTION	REF. NO.	PART NO.	DESCRIPTION			
1	394740	Cylinder Assembly	23	394032	Flywheel-Magneto	46A	394791	Cam Gear, Worm and Oil Slinger Assy. (Clockwise Rotation)			
2	293708	Bushing—Cylinder <b>Note:</b> Requires special tools for installation.	24	61760	Key-Flywheel			<b>Note:</b> 394706 Cam Gear, Worm and Oil Slinger Assembly (Counterclockwise) Used on Type Nos. 0051, 0130, 0141, 0146, 0156, 0160.			
3	299819	Seal—Oil	25	391650	Piston Assy.—Standard	52	*270844	Gasket—Intake Elbow			
5	211851	Head—Cylinder		391651	Piston Assy.—.010" O.S.	54	93485	Screw—Intake Elbow Mounting			
7	*270836	Gasket—Cylinder Hd.		391652	Piston Assy.—.020" O.S.	65	93587	Screw—Vertical Pull Starter Mounting			
8	298383	Breather—Valve Chamber		391653	Piston Assy.—.030" O.S.	69	66874	Washer—Thrust (11/16" O.D. x 15/32" I.D.)			
9	*270239	Gasket—Valve Cover	<b>PISTON RING SETS:</b>  <b>Note:</b> For Chrome Piston Ring Set—standard size—order Part No. 392330.  26    391654    Ring Set—Standard Piston 391656    Ring Set—.010" O.S. Piston 391658    Ring Set—.020" O.S. Piston 391660    Ring Set—.030" O.S. Piston  27    26026    Lock—Piston Pin 28    391649    Pin Assembly—Piston—Standard 394861    Pin Assembly—Piston—.005" O.S.  29    391640    Rod Assembly—Connecting <b>Note:</b> For Connecting Rod with .020" undersize Crankpin Bearing—Order No. 393710.  31    222390    Lock—Connecting Rod Screw 32    93670    Screw—Connecting Rod  33    212004    Valve—Exhaust 34    261233    Valve—Intake 35    260552    Spring—Intake Valve 36    26478    Spring—Exhaust Valve 40    93312    Retainer—Valve Spring 45    261250    Tappet—Valve 46    212021    Gear—Cam			74	93490	Screw—Sem			
10	93394	Screw—Breather and P.T.O. Gear Sump Cover (Ref. No. 86) Mounting Sem				74	93490	Screw—Sem	81	223256	Lock—Muffler Screw
11	231043	Tube—Breather				81	223256	Lock—Muffler Screw	83	230831	Shaft—Drive
12	*270833	Gasket—Crankcase—.015" thick (Standard)				83	230831	Shaft—Drive <b>Note:</b> 230952 Shaft—Drive Used on Type Nos. 0141, 0146. 230948 Shaft—Drive Used on Type No. 0144.	83A	231278	Gear—Drive
	*270895	Gasket—Crankcase—.005" thick									<b>Note:</b> 231279 Gear—Drive Used on Type Nos. 0051, 0130, 0141, 0146, 0156, 0160.
	*270896	Gasket—Crankcase—.009" thick									86    221780    Cover—Sump
13	93111	Screw—Cylinder Hd.—(1-15/16" long)									87    391484    Seal—Oil
15	91084	Plug—Oil Drain— <b>Note:</b> 93418 Plug—Oil Drain (Socket Head) Used on Type No. 0137.									88    270328    Gasket—Sump Cover
16	394643	Crankshaft <b>Note:</b> 394793 Crankshaft Used on Type Nos. 0016, 0052, 0133, 0134, 0138, 0139, 0140, 0142, 0143, 0144, 0148. 394881 Crankshaft Used on Type Nos. 0017, 0136.									95    93499    Screw—Throttle Valve Mounting Sem
18	394157	Sump—Oil									96    211237    Valve—Throttle
18A	391645	Sump—Oil Used on Model 113985 and 113988 Series.						108    280178    Valve—Choke			
19	293709	Bushing—Oil Sump— <b>Note:</b> Requires special tools for installation.						116    280203    O-Ring			
20	391483	Seal—Oil						125    394739    Carburetor Assembly			
21	66768	Plug—Oil Filler						131    394035    Shaft and Lever—Throttle			
22	93032	Screw—Sump Mtg. Sem						141    68908    Shaft—Choke			
22A	93415	Screw—Sump Mtg. Sem (One used in Auxiliary Drive Gear Sump) on Model 113985 and 113988 Series. <b>Note:</b> Use 93032 Screw in the other (5) Sump Mounting Holes.						151    93524    Screw—Rd. Hd.—5-40 x 1/2			

\*Included in Gasket Set—  
Part No. 391662.

# 113900 to 113999

REF. NO.	PART NO.	DESCRIPTION	REF. NO.	PART NO.	DESCRIPTION	REF. NO.	PART NO.	DESCRIPTION
152	260746	Spring—Throttle Adj.	269	26099	Wire Control, 54" long	356	298479	Wire—Ground
163	271139	Gasket—Air Cleaner Mounting			<b>Note:</b> If longer wire is needed, specify length in inches; if shorter wire is needed order No. 26099 and cut to required length.		<b>Note:</b> 391554 Wire—Ground Used on Type No. 0130.	
172	271273	Gasket—Air Cleaner	270	63426	Locknut—Control Wire Casing	358	391662	Gasket Set
180	391694	Tank Assembly—Fuel	271	290568	Lever Assembly Control	363	19069	Puller—Flywheel (Optional Accessory)
181	298425	Cap—Fuel Tank	300	394644	Muffler—Exhaust (Includes No. 270774 Mounting Gasket)	372	220477	Clamp—Condenser
188	93585	Screw—Fuel Tank and Starter Mounting	304	395509	Housing—Blower	375	294628	Breaker Points and Condenser Set
190	93440	Screw—Fuel Tank Mtg.	305	93559	Screw—Blower Housing Mounting Sem		<b>Note:</b> 299061 Ignition Kit Includes: 294628 Point Set 65704 Plunger 61760 Key—Flywheel	
201	261539	Link—Governor	306	223263	Shield—Cylinder	377	93065	Key—Woodruff No. 6
202	261619	Link—Throttle	307	93490	Screw—Cylinder Shield Mounting Sem	382	93545	Screw—Choke Link Cover
203	280272	Crank—Bell	307A	93926	Screw—Shoulder	383	89838	Wrench—Spark Plug
205	93838	Screw—Shoulder	324	223006	Screen—Rotating	390	261249	Spring—Diaphragm
209	261618	Spring—Governor (For 3200 to 3400 RPM Top Speed Set—No Load)	331	223047	Washer—Flywheel	392	260455	Spring—Fuel Pump Diaphragm
	<b>Note:</b>	261642 Spring—Governor (For 2900 to 3100 RPM Top Speed Set—No Load) Used on Type Nos. 0015, 0016, 0017, 0051, 0052, 0130, 0133, 0135, 0140, 0142, 0143, 0144, 0147, 0148, 0156.	332	92284	Nut—Flywheel	394	391643	Diaphragm Carburetor
		261643 Spring—Governor (For 3500 to 3700 RPM Top Speed Set—No Load) Used on Type Nos. 0134, 0138, 0146.	333	298502	Armature—Magneto	396	270571	Gasket—Choke Link Cover
		261644 Spring—Governor (For 2600 to 2800 RPM Top Speed Set—No Load) Used on Type Nos. 0158, 0160.	334	93381	Screw—Armature Mounting Sem	397	211678	Cover—Choke Link
219	394044	Oil Slinger Assy.	337	298809	Plug—Spark 1-1/2" high—(37-42 M.M.)	414	220982	Washer
227	394115	Lever Assy.—Governor		<b>Note:</b>	293918 Plug—Spark (1-1/2" high—37 mm Resistor Type)	432	221377	Cap—Spring
228	93758	Screw—Hex. Hd.	340	26018	Spring—Breaker Arm	508	93158	Screw—Sem
265	22372	Clamp—Casing	341	93381	Screw—Breaker Arm Mounting Sem	516	260374	Spring—Connector
267	93469	Screw—Clamp Mtg.	342	65704	Plunger—Breaker Point	523	391838	Cap With Dipstick—Oil Filler
268	66986	Casing—Control Wire—48" long	344	93042	Screw—Condenser Clamp Mounting Sem	524	68838	Seal—Filler Tube
	<b>Note:</b>	If longer casing is needed, specify length in inches; if a shorter casing is needed order No. 66986 and cut to required length.	345	220366	Cover—Breaker Point and Condenser	525	280131	Tube—Oil Filler
			346	93705	Screw—Dust Cover Mounting	527	222549	Clamp—Oil Filler
			351	93735	Screw—Terminal	529	67838	Grommet—Breather
			352	66068	Washer—Insulating	534	93865	Screw—Air Cleaner
			353	92791	Washer—Lock—Shakeproof (3)	535	270848	Element—Air Cleaner
			354	90576	Nut—Hex.—8-32 (2)	536	394738	Cleaner—Assembly—Air
			355	66554	Collar—Insulating	552	230732	Bushing—Governor Shaft
						611	297219	Pipe—Fuel (long)
						612	296811	Pipe—Fuel (short)
						613	93935	Screw—Muffler Mtg.
						615	93307	Retainer—E-Ring
						616	394075	Crank—Governor
						617	270344	Seal—Fuel Intake Tube

# 113900 to 113999

REF. NO.	PART NO.	DESCRIPTION	REF. NO.	PART NO.	DESCRIPTION	REF. NO.	PART NO.	DESCRIPTION
620	394642	Plate—Carburetor Control (Remote Control)	676	222238	Deflector—Muffler	773	390112	Retainer Assy.—Spur Gear
	<b>Note:</b> 394882	Plate—Carburetor Control (Manual Friction) Used on Type Nos. 0015, 0016, 0017, 0051, 0052, 0136, 0137, 0145.	677	93705	Screw—Muffler Deflector	774	280121	Insert—Starter Handle
621	297472	Switch—Stop	681	393451	Needle Valve Kit	775	280036	Grip—Starter Rope
625	391377	Tube—Fuel Intake	720	93474	Pin—Gear to Shaft	776	222049	Guide—Rope
634	270167	Washer—Throttle Shaft (Felt)	721	221779	Stop—Drive Shaft	777	390066	Spring—Vertical Pull Starter
635	66538	Elbow—Spark Plug	741	261533	Gear—Timing	778	280021	Cover—Vertical Pull Starter Pulley
643	222991	Cup—Air Cleaner	764	391486	Starter Assembly—Vertical Pull	842	270920	Seal—Filler Cap
643A	280342	Support—Air Cleaner Element	765	299947	Housing—Vertical Pull Starter	847	392056	Filler Group—Oil
645	23513	Bushing—Plunger	766	280022	Pulley—Rope (Small)	851	221798	Terminal—Ignition Cable
655	222057	Anchor—Spring	767	231048	Pin—Small Rope Pulley	869	210879	Seat—Intake Valve (Standard)
674	93559	Screw—Tank to Bracket	768	299948	Pulley and Gear Assembly—Starter (50" Rope)	870	211291	Seat—Exhaust Valve (Standard)
			769	66734	Rope—Vertical Pull Starter (50")	871	63709	Guide—Exhaust Valve
			771	299961	Clip—Vertical Pull	901	223004	Bracket—Bell Crank
						902	280271	Grommet—Screen

