

28Q700

Illustrated Parts List

Model Series

28Q700

TYPE NUMBERS
0026 through 0694.

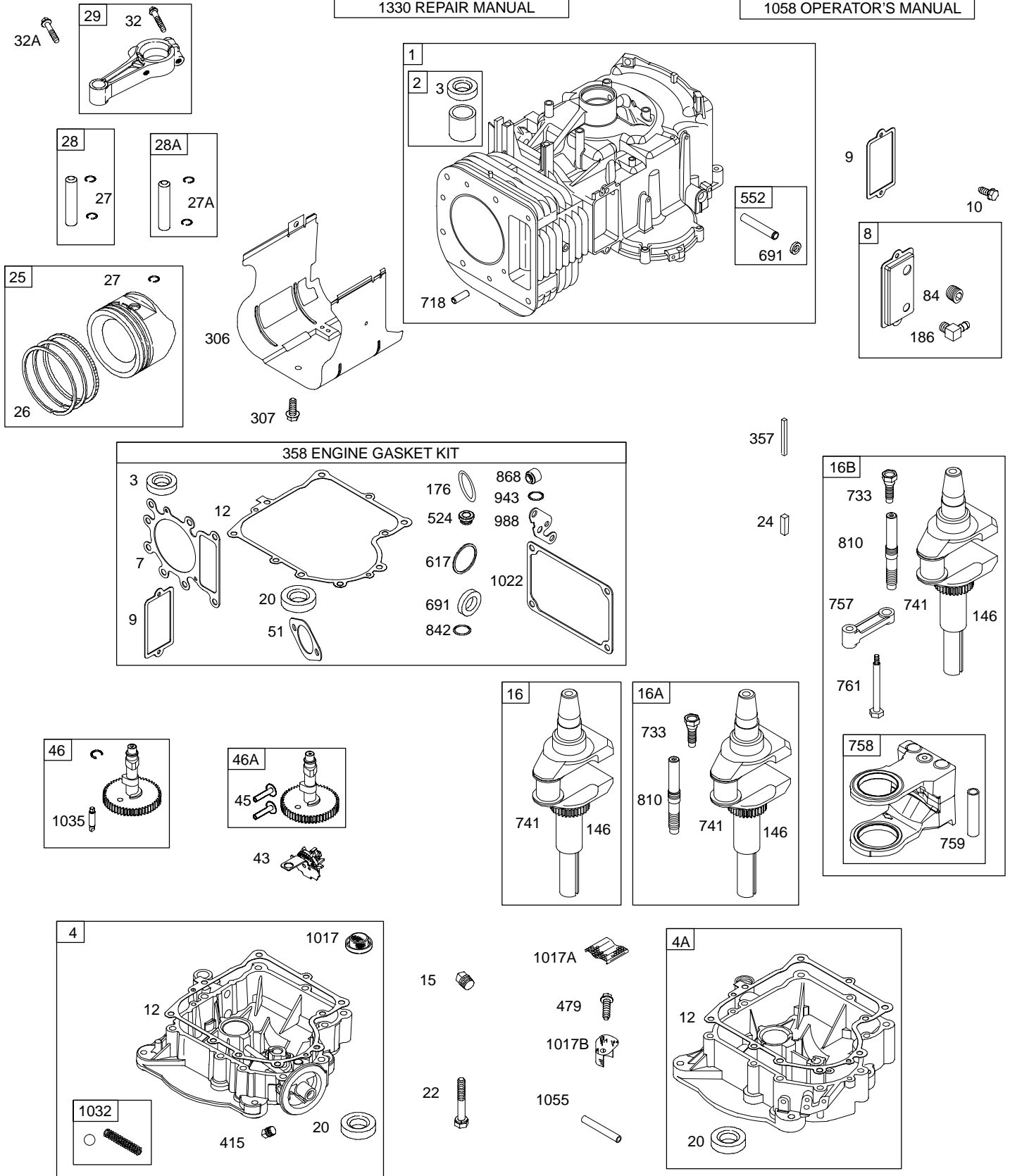
TABLE OF CONTENTS

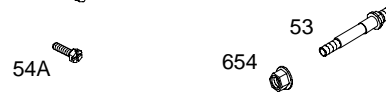
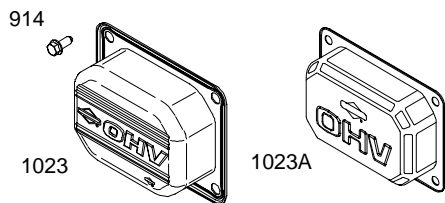
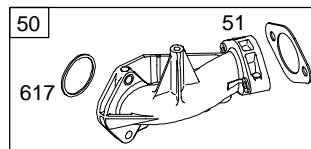
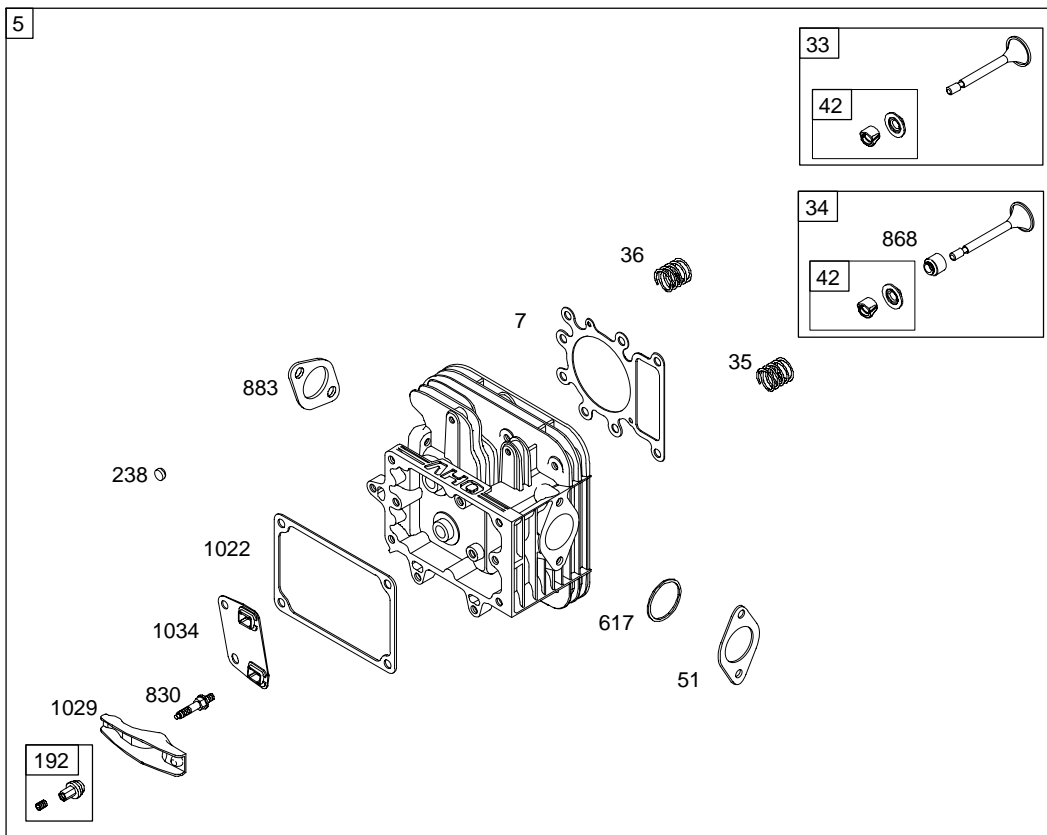
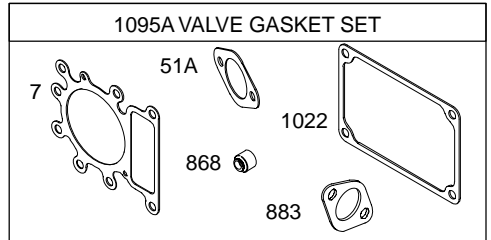
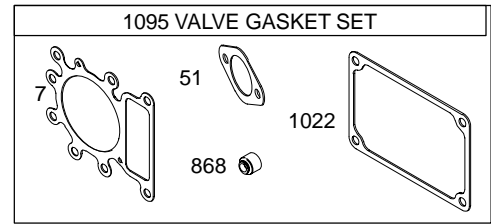
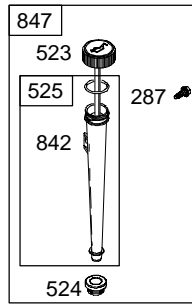
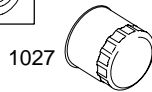
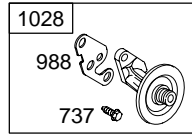
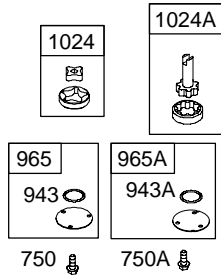
Air Cleaner	5
Alternator	9
Blower Housing/Shrouds	7
Cams	2
Carburetor	4
Controls	6
Crankcase Cover/Sump	2
Crankshaft	2
Cylinder	2
Electric Starter	10
Flywheel	8
Fuel Tank	6
Governor Spring	6
Head	3
Ignition	9
Kits/Gaskets-Carburetor	4
Kits/Gaskets-Valve	2
Muffler	5
Oil	3
Piston Group	2
Rewind	8
Valves	3

PRINTED IN U.S.A.

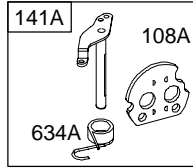
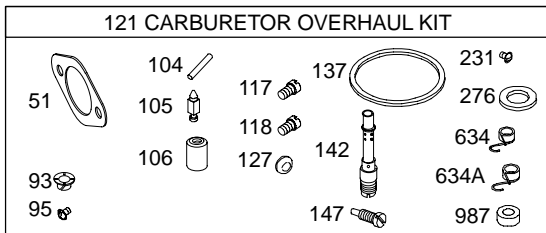
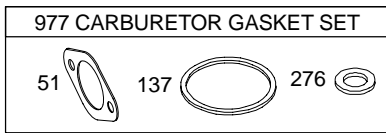
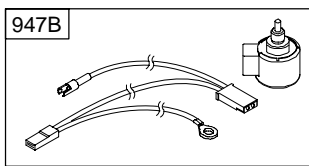
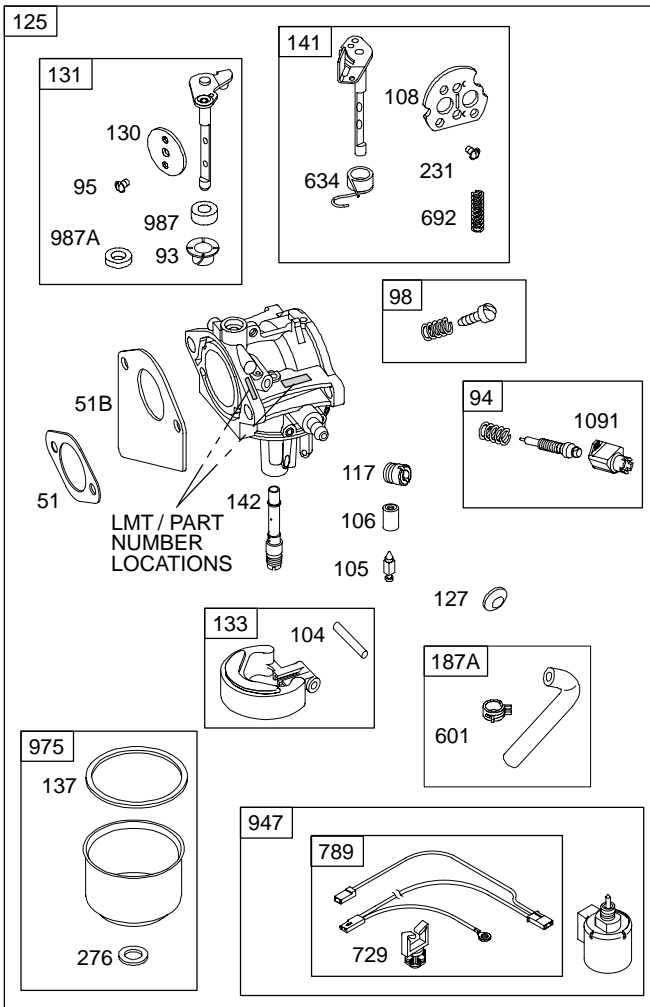


COPYRIGHT by BRIGGS & STRATTON CORPORATION
All rights reserved. No part of this material may be reproduced or transmitted, in any form or by any means, electronic or mechanical, including photocopying, recording or by any information storage and retrieval system, without permission in writing from Briggs & Stratton Corporation.

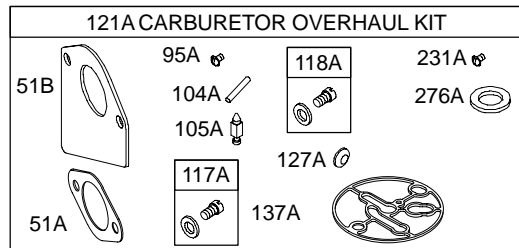
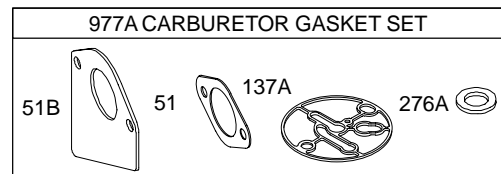
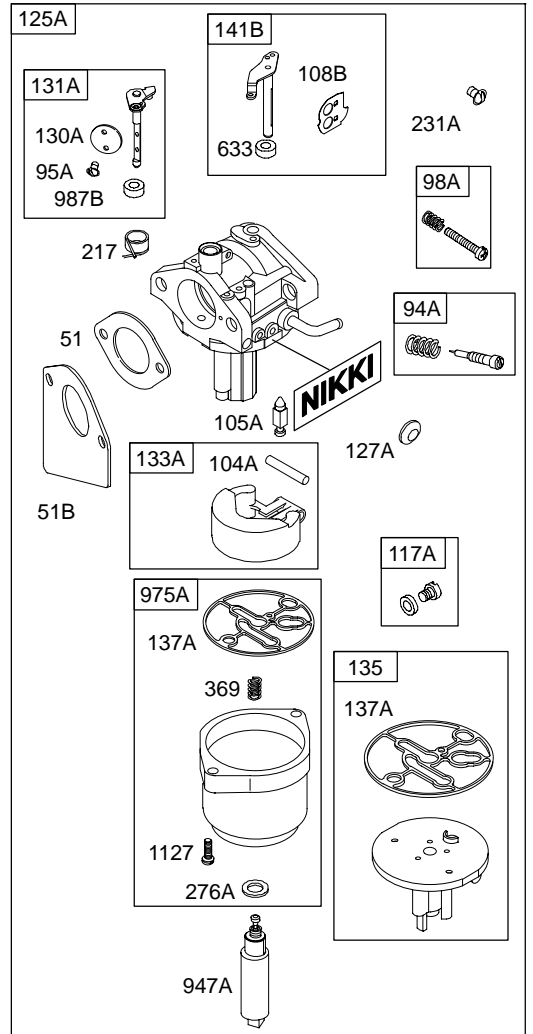


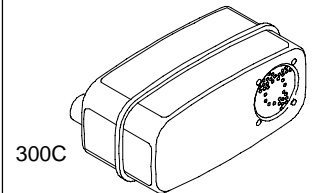
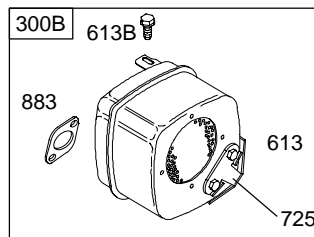
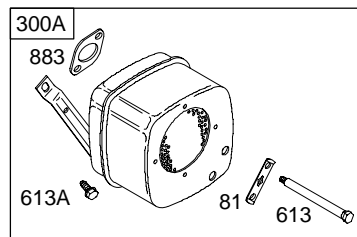
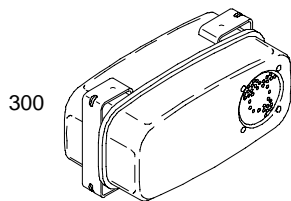
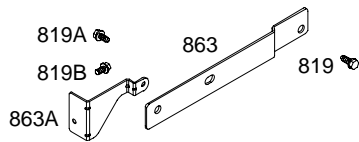
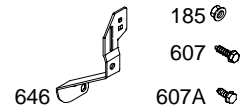
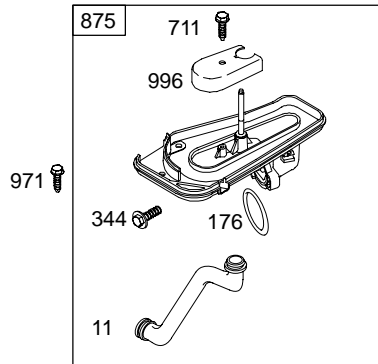
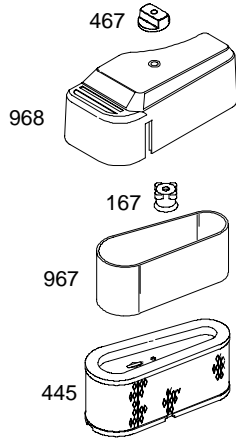


WALBRO

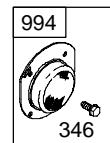
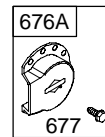
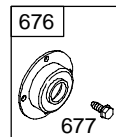
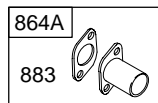
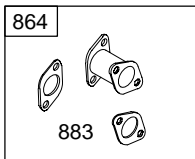


NIKKI

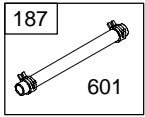




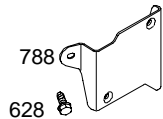
823



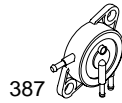
28Q700



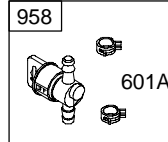
601



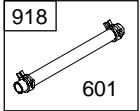
628



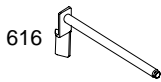
385



601A



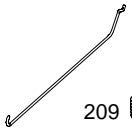
601



404

614

202



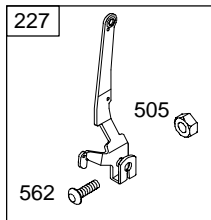
209



216



232



227

505

562

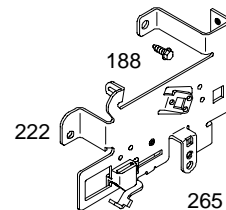


269

270



271



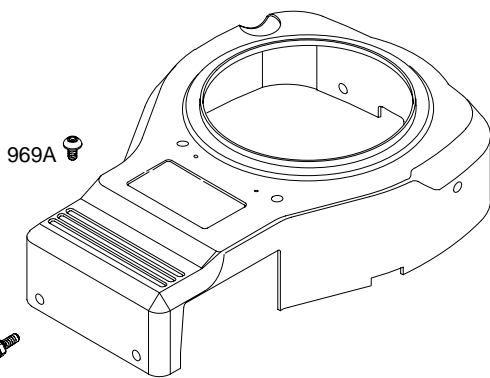
222

188

265

559

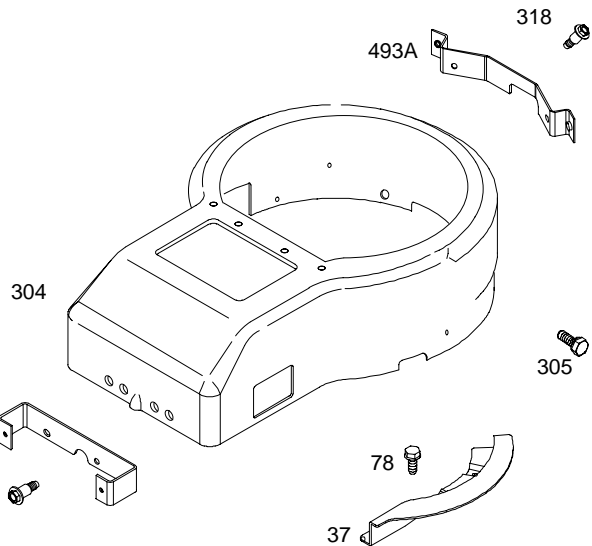
267



969A

921

969

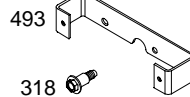


493A

318

304

305

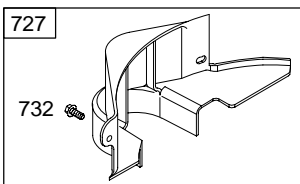


493

318

78

37

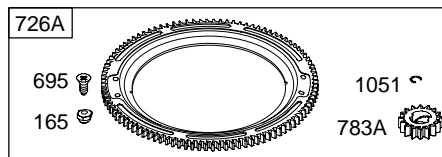
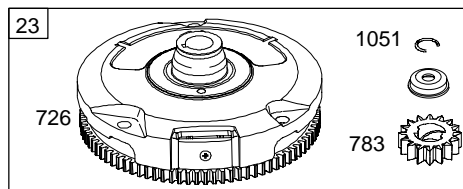
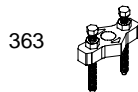
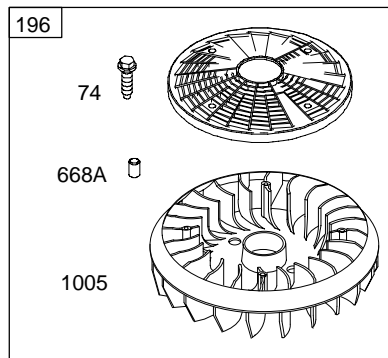
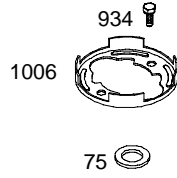
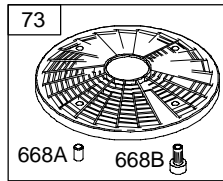











727

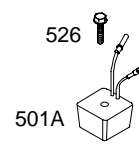
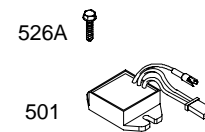
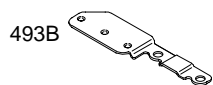
732

1019 LABEL KIT

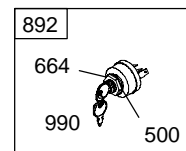
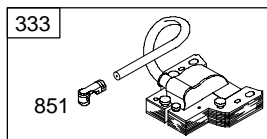
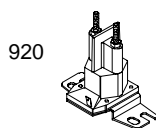
1036 EMISSION LABEL

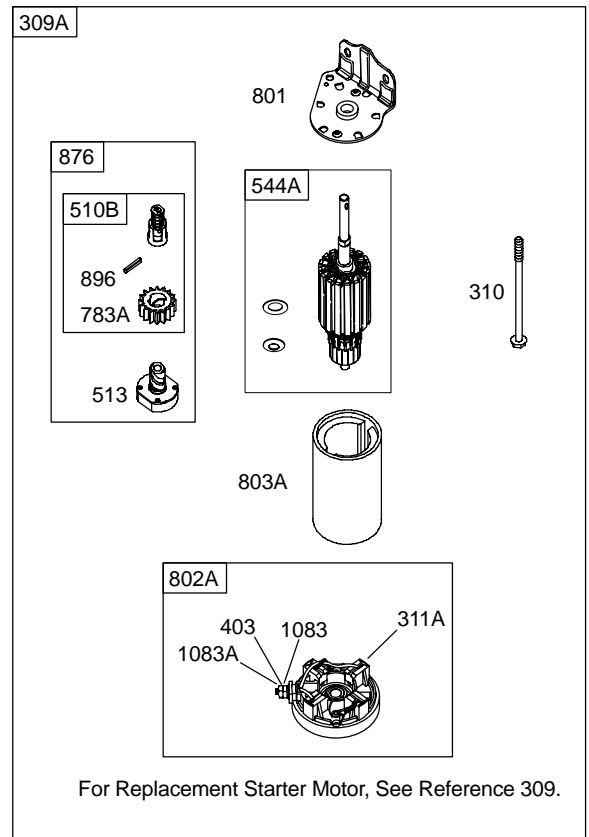
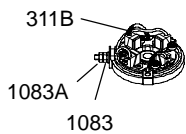
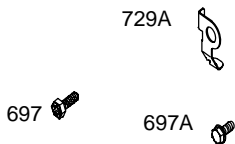
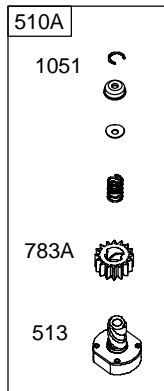
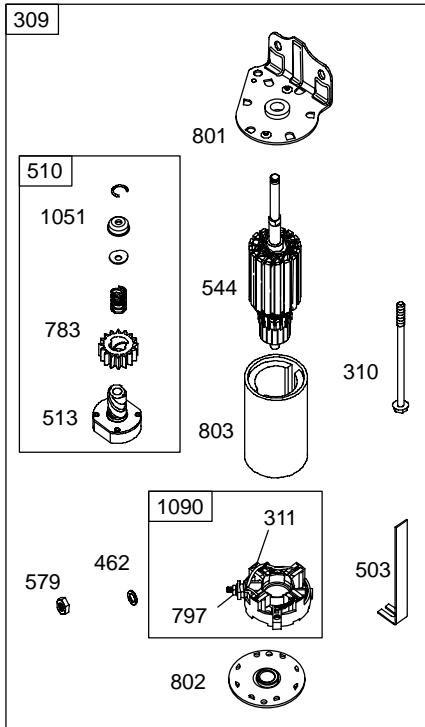


DUAL CIRCUIT	TRI CIRCUIT	10 AMP
<div data-bbox="487 315 665 357">474</div> <div data-bbox="487 357 665 399">877</div>  <div data-bbox="519 514 633 609"> <div data-bbox="519 514 633 556">1059</div>  </div>	<div data-bbox="673 315 852 357">474A</div> <div data-bbox="673 357 852 399">877A</div>  <div data-bbox="706 514 820 609"> <div data-bbox="706 514 820 556">1059</div>  </div>	<div data-bbox="860 315 1039 357">474B</div> <div data-bbox="860 357 1039 399">877B</div>  <div data-bbox="893 514 1006 609"> <div data-bbox="893 514 1006 556">1059</div>  </div>
<div data-bbox="487 619 665 661">878</div> 	<div data-bbox="673 619 852 661">878A</div> 	<div data-bbox="860 619 1039 661">578</div> 



NOTE: ALL OLD STYLE STATORS USE
REFERENCE NUMBER 1119 MOUNTING SCREW





28Q700

REF. NO.	PART NO.	DESCRIPTION	REF. NO.	PART NO.	DESCRIPTION	REF. NO.	PART NO.	DESCRIPTION
1	496412	Cylinder Assembly	23	693556	Flywheel (Steel Ring Gear)	26	696403	Ring Set (Standard)
2	399265	Kit-Bushing/Seal (Magneto Side)			Note			(Used After Code Date 01041800).
3	★391086	Seal-Oil (Magneto Side)			693557 Flywheel (Steel Ring Gear)			696404 Ring Set (.010" Oversize)
4	693582	Sump-Engine (Used After Code Date 98063000).			Used on Type No(s). 0116, 0117, 0128, 0136, 0144, 0151, 0155, 0164, 0165, 0167, 0168, 0613, 0616, 0624, 0636, 0641, 0647, 0655, 0662, 0664, 0667, 0668, 0671, 0673, 0675, 0681, 0687, 0688, 0690.			(Used After Code Date 01041800).
4A	496742	Sump-Engine (Used Before Code Date 98070100).						696405 Ring Set (.020" Oversize)
5	698148	Head-Cylinder						(Used After Code Date 01041800).
7	△★273280	Gasket-Cylinder Head						696406 Ring Set (.030" Oversize)
8	696126	Breather Assembly						(Used After Code Date 01041800).
9	★27803	Gasket-Breather						
10	691666	Screw (Breather Assembly)	24	222698	Key-Flywheel			Note
11	691328	Tube-Breather	25	696397	Piston Assembly (Standard)			495854 Ring Set (Standard)
12	★692226	Gasket-Crankcase (.015" Thick) (Standard)			(Used After Code Date 01041800).			(Used Before Code Date 01041900).
		Note			696399 Piston Assembly (.020" Oversize)			495851 Ring Set (.020" Oversize)
		★691406 Gasket- Crankcase (.005" Thick)			(Used After Code Date 01041800).			(Used Before Code Date 01041900).
		★691405 Gasket- Crankcase (.009" Thick)			696400 Piston Assembly (.030" Oversize)			495855 Ring Set (.030" Oversize)
13	690360	Screw (Cylinder Head)			(Used After Code Date 01041800).			(Used Before Code Date 01041900).
15	690946	Plug-Oil Drain			Note	27	691299	Lock-Piston Pin (Used After Code Date 95101500).
		Note			499284 Piston Assembly (Standard)			(Used Before Code Date 01041900).
		691680 Plug-Oil Drain Used on Type No(s). 0623, 0624, 0676.			(Used Before Code Date 01041900).	27A	691792	Lock-Piston Pin (Used Before Code Date 95101600).
16	690136	Crankshaft (Used After Code Date 98063000).			499292 Piston Assembly (.020" Oversize)			
16A	693944	Crankshaft (Used Before Code Date 98070100 and After Code Date 95073100).			(Used Before Code Date 01041900).			
16B	693653	Crankshaft (Used Before Code Date 95080100).						
20	★291675	Seal-Oil (PTO Side)						
22	692125	Screw (Crankcase Cover/Sump)						

★ Engine Gasket Set – Reference 358
 ● Carburetor Overhaul Kit – Reference 121
 ∅ Carburetor Overhaul Kit – Reference 121A

◆ Carburetor Gasket Set – Reference 977
 ∇ Carburetor Gasket Set – Reference 977A
 △ Valve Gasket Set – Reference 1095, 1095A

0295-10

Assemblies include all parts shown in frames.

08/11/2004

REF. NO.	PART NO.	DESCRIPTION	REF. NO.	PART NO.	DESCRIPTION	REF. NO.	PART NO.	DESCRIPTION
28	498319	Pin-Piston (Standard) (Used After Code Date 95101500).	33	695760	Valve-Exhaust	74	691658	Screw (Rotating Screen) (1.8" Long)
		<p style="text-align: center;">————— Note —————</p> 498320 Pin-Piston (.005" Oversize) (Used After Code Date 95101500).			34			695761
28A	299691	Pin-Piston (Standard) (Used Before Code Date 95101600).	35	691279		Spring-Valve (Intake)	74B	
		<p style="text-align: center;">————— Note —————</p> 391286 Pin-Piston (.005" Oversize) (Used Before Code Date 95101600).			36	691279		Spring-Valve (Exhaust)
29	692419	Rod-Connecting (Standard) (Used After Code Date 98063000).	37	690456			Guard-Flywheel	78
		<p style="text-align: center;">————— Note —————</p> 692420 Rod-Connecting (.020" Undersize) (Used After Code Date 98063000).			42	499586	Keeper-Valve	
		<p style="text-align: center;">————— Note —————</p> 495490 Rod-Connecting (Standard) (Used Before Code Date 98070100).	43	691968			Slinger-Governor/Oil	84
		<p style="text-align: center;">————— Note —————</p> 692420 Rod-Connecting (.020" Undersize) (Used After Code Date 98063000).			44	690564	Tappet-Valve	
		<p style="text-align: center;">————— Note —————</p> 495490 Rod-Connecting (.020" Undersize) (Used Before Code Date 98070100).	45	698492			Camshaft (Used After Code Date 98063000).	94
		<p style="text-align: center;">————— Note —————</p> 495490 Rod-Connecting (.020" Undersize) (Used Before Code Date 98070100).			46A	790340	Camshaft (Used Before Code Date 98070100).	
		<p style="text-align: center;">————— Note —————</p> 692420 Rod-Connecting (.020" Undersize) (Used After Code Date 98063000).	50	690193			Manifold-Intake	95
		<p style="text-align: center;">————— Note —————</p> 495490 Rod-Connecting (.020" Undersize) (Used Before Code Date 98070100).			51★◆	692137	Gasket-Intake	
		<p style="text-align: center;">————— Note —————</p> 495490 Rod-Connecting (.020" Undersize) (Used Before Code Date 98070100).	51A	△★272569			Gasket-Intake (Used Before Code Date 97100600).	98
		<p style="text-align: center;">————— Note —————</p> 495490 Rod-Connecting (.020" Undersize) (Used Before Code Date 98070100).			51B★◆	692284	Gasket-Intake	
		<p style="text-align: center;">————— Note —————</p> 495490 Rod-Connecting (.020" Undersize) (Used Before Code Date 98070100).	53	690227			Stud (Carburetor)	104
		<p style="text-align: center;">————— Note —————</p> 495490 Rod-Connecting (.020" Undersize) (Used Before Code Date 98070100).			54	691148	Screw (Intake Manifold) (Used After Code Date 97100500).	
		<p style="text-align: center;">————— Note —————</p> 495490 Rod-Connecting (.020" Undersize) (Used Before Code Date 98070100).	54A	690953			Screw (Intake Manifold) (Used Before Code Date 97100600).	105
		<p style="text-align: center;">————— Note —————</p> 495490 Rod-Connecting (.020" Undersize) (Used Before Code Date 98070100).			73	494439	Screen-Rotating	
		<p style="text-align: center;">————— Note —————</p> 495490 Rod-Connecting (.020" Undersize) (Used Before Code Date 98070100).						106
		<p style="text-align: center;">————— Note —————</p> 495490 Rod-Connecting (.020" Undersize) (Used Before Code Date 98070100).						
32	692852	Screw (Connecting Rod) (1 5/8" Long) (Used After Code Date 98063000).				108	690464	Valve-Choke
		<p style="text-align: center;">————— Note —————</p> 690356 Screw (Connecting Rod) (1 7/8" Long) (Used Before Code Date 98070100).				108A	692344	Valve-Choke
32A	690348	Screw (Connecting Rod) (1 5/8" Long) (Used Before Code Date 98070100).				108B	695419	Valve-Choke

★ Engine Gasket Set – Reference 358
● Carburetor Overhaul Kit – Reference 121
∅ Carburetor Overhaul Kit – Reference 121A

◆ Carburetor Gasket Set – Reference 977
∇ Carburetor Gasket Set – Reference 977A
△ Valve Gasket Set – Reference 1095, 1095A

28Q700

REF. NO.	PART NO.	DESCRIPTION	REF. NO.	PART NO.	DESCRIPTION	REF. NO.	PART NO.	DESCRIPTION
117	●692408	Jet–Main (Standard) (LMT 150, 152, 153, 154, 155, 156) Note ——— ●697228 Jet–Main (Standard) (LMT 33, 34, 73, 74, 76, 121, 122, 124, 125, 126, 128, 129, 130, 132, 137, 138)	125	698620	Carburetor (Gravity Feed) Note ——— 698782 Carburetor (Pump Feed)	186	691609	Connector–Hose (Vacuum Line) (Breather Assembly)
117A	●695415	Jet–Main (Standard)	125A		Carburetor (Nikki) (Service with Walbro Carburetor, Gravity Feed)	186A	692317	Connector–Hose (Carburetor) (Used Before Code Date 02102800).
118	●232116	Jet–Main (High Altitude) (LMT 150, 152) Note ——— 692411 Jet–Main (High Altitude) (LMT 153, 154, 156) 231850 Jet–Main (High Altitude) (LMT 33, 34, 73, 74, 76, 121, 122, 124, 125, 126, 128, 129, 130, 132, 137, 138)	127	●695005	Plug–Welch	187	296004	Line–Fuel (Cut to Required Length)
118A	●695416	Jet–Main (High Altitude)	127A	●690727	Plug–Welch	187A	699331	Line–Fuel (Formed) (10 1/4" Long) (Cut to Required Length) Note ——— 697907 Line–Fuel (Formed) (9 5/8" Long)
121	690191	Kit–Carburetor Overhaul (Used After Code Date 97100500). Note ——— 499233 Kit–Carburetor Overhaul (Used After Code Date 96072500 and Before Code Date 97100600). 498116 Kit–Carburetor Overhaul (Used Before Code Date 96072600).	130	691750	Valve–Throttle	188	691693	Screw (Control Bracket)
121A	695427	Kit–Carburetor Overhaul	130A	695418	Valve–Throttle	192	691986	Adjuster–Rocker Arm
			131	494379	Kit–Throttle Shaft	196	695493	Fan/Screen Assembly
			131A	695421	Kit–Throttle Shaft	202	691841	Link–Mechanical Governor
			133	494381	Float–Carburetor	209	692208	Spring–Governor (Green) Note ——— 690480 Spring– Governor (Red) Used on Type No(s). 0139, 0140, 0167, 0639, 0641, 0647, 0667, 0674, 0676, 0679, 0692. 691795 Spring– Governor (Yellow) Used on Type No(s). 0155, 0627, 0655, 0672, 0693.
			133A	694914	Float–Carburetor	216	691840	Link–Choke
			135	696142	Tube–Fuel Transfer	217	695409	Spring–Choke Return
			137	●281165	Gasket–Float Bowl	222	694042	Bracket–Control
			137A	●695426	Gasket–Float Bowl	227	691374	Lever–Governor Control
			141	495097	Kit–Choke Shaft	231	●691636	Screw (Choke Valve)
			141A	495931	Kit–Choke Shaft	231A	●690718	Screw (Choke Valve)
			141B	695420	Kit–Choke Shaft	232	691842	Spring–Governor Link
			142	●692412	Nozzle–Carburetor (LMT 149, 150, 152, 153, 154, 155, 156) Note ——— ●231990 Nozzle– Carburetor (LMT 33, 34, 73, 74, 76, 121, 122, 124, 125, 126, 128, 129, 130, 132, 137, 138)	238	691843	Cap–Valve
			146	691639	Key–Timing			
			147	●231985	Jet–Pilot (LMT 73, 74, 76, 121, 122, 124, 125, 126, 128, 129, 130, 132, 137, 138) Note ——— ●497472 Jet–Pilot (LMT 33, 34)			
			165	693148	Nut (Ring Gear)			
			167	692297	Seal–Air Cleaner Nut			
			176	★691917	Seal–O Ring (Air Cleaner Base)			
			185	690958	Nut (Air Cleaner Base)			

★ Engine Gasket Set – Reference 358
● Carburetor Overhaul Kit – Reference 121
∅ Carburetor Overhaul Kit – Reference 121A

0295–12

Assemblies include all parts shown in frames.

◆ Carburetor Gasket Set – Reference 977
∇ Carburetor Gasket Set – Reference 977A
△ Valve Gasket Set – Reference 1095, 1095A

08/11/2004

REF. NO.	PART NO.	DESCRIPTION	REF. NO.	PART NO.	DESCRIPTION	REF. NO.	PART NO.	DESCRIPTION
240	298090	Filter–Fuel (Red) Note ——— 394358 Filter–Fuel (White)	309	693551	Motor–Starter (3 5/8" Housing Length) (Steel Ring Gear Only) Note ——— 497595 Motor–Starter (3 5/8" Housing Length) (Plastic Ring Gear Only) 693054 Motor–Starter (3 5/8" Housing Length) (Aluminum Ring Gear Only) 693552 Motor–Starter (4 3/8" Housing Length) (Steel Ring Gear Only) 497401 Motor–Starter (4 3/8" Housing Length) (Plastic Ring Gear Only) 499521 Motor–Starter (4 3/8" Housing Length) (Aluminum Ring Gear Only)	318	692127	Screw (Mounting Bracket)
265	691024	Clamp–Casing				333	492341	Armature–Magneto
267	690804	Screw (Casing Clamp)				334	691061	Screw (Magneto Armature)
268	691025	Casing–Control Wire (Cut to Required Length)				337	491055	Plug–Spark
269	691026	Wire–Control (Cut to Required Length)				344	693675	Screw (Cable Clamp) (Air Cleaner Base)
270	691027	Nut (Control Wire Casing)				346	690661	Screw (Spark Arrestor)
271	691028	Lever–Control				356	690807	Wire–Stop
276	◆692255	Washer–Sealing				357	691483	Key–Drive Pulley
276A	◆695410	Washer–Sealing				358	691580	Gasket Set–Engine (Used After Code Date 97100500). Note ——— 495993 Gasket Set–Engine (Used Before Code Date 97100600).
287	691002	Screw (Dipstick Tube)				363	19203	Puller–Flywheel
300	690850	Muffler				369	695422	Spring–Float Bowl
300A	496022	Muffler				383	89838	Wrench–Spark Plug
300B	691874	Muffler Used on Type No(s). 0692.				385	691108	Screw (Fuel Pump)
300C	498984	Muffler Used on Type No(s). 0694.				387	808656	Pump–Fuel
304	690497	Housing–Blower	309A		Motor–Starter (For Replacement Starter Motor, See Reference 309)	403	690288	Washer (End Cap)
305	691108	Screw (Blower Housing)				404	691691	Washer (Governor Crank)
306	698454	Shield–Cylinder				415	690283	Plug (Pressure Relief Valve)
307	691003	Screw (Cylinder Shield)	310	690323	Bolt (Starter Motor) (3 5/8" Housing Length) Note ——— 691263 Bolt (Starter Motor) (4 3/8" Housing Length) 692329 Bolt (Starter Motor) (4 9/16" Housing Length)	445	496894	Filter–Air Cleaner Cartridge
						462	691261	Washer (Starter Cable)
						467	691668	Knob–Air Cleaner
						474	696459	Alternator (Dual Circuit)
						474A	696457	Alternator (Tri–Circuit)
						474B	696458	Alternator (10 Amp)
						479	691627	Screw (Oil Pump Screen) (Used Before Code Date 94110700).
			311	497608	Brush Set			
			311A	395538	Brush Set (3 5/8" Housing Length)			
			311B	490311	Brush Set (4 9/16" Housing Length)			

★ Engine Gasket Set – Reference 358
● Carburetor Overhaul Kit – Reference 121
∅ Carburetor Overhaul Kit – Reference 121A

◆ Carburetor Gasket Set – Reference 977
∇ Carburetor Gasket Set – Reference 977A
△ Valve Gasket Set – Reference 1095, 1095A

28Q700

REF. NO.	PART NO.	DESCRIPTION	REF. NO.	PART NO.	DESCRIPTION	REF. NO.	PART NO.	DESCRIPTION
493	690493	Bracket-Mounting (Front)	552	491986	Bushing-Governor Crank	676	396903	Deflector-Muffler
493A	690494	Bracket-Mounting (Rear)	559	690661	Screw (Remote Choke Stop)	676A	393761	Deflector-Muffler
493B	694475	Bracket-Mounting	562	691119	Bolt (Governor Control Lever)	677	690661	Screw (Muffler Deflector)
493C	691177	Bracket-Mounting	578	692306	Wire Assembly	691	★692407	Seal-Governor Shaft
500	691086	Washer (Key Switch)	579	691029	Nut (Starter Cable)	692	690572	Spring-Detent
501	691185	Regulator (10 & 16 Amp)	601	95162	Clamp-Hose (Green)	695	693109	Screw (Ring Gear)
501A	691188	Regulator (5 & 9 Amp)	601A	691038	Clamp-Hose (Black)	697	690372	Screw (Drive Cap)
503	691532	Strap-Starter (Used Before Code Date 99070600).	607	690703	Screw (Air Cleaner Brace)	697A	691058	Screw (Drive Cap)
505	691251	Nut (Governor Control Lever)	607A	691693	Screw (Air Cleaner Brace)	711	690703	Screw (Carburetor Shield)
510	693699	Drive-Starter (Used With Steel Ring Gear)	613	691416	Screw (Exhaust Muffler)	718	690959	Pin-Locating
510A	696541	Drive-Starter (Used With Aluminum & Plastic Ring Gears)	613A	691678	Screw (Exhaust Muffler)	725	690420	Shield-Heat
510B	696540	Drive-Starter	613B	692198	Screw (Exhaust Muffler)	726		Gear-Ring (Steel)
513	692024	Clutch-Drive	614	691620	Pin-Cotter			(See Reference 23 for Service)
521	690581	Shield-Cable	616	692012	Crank-Governor	726A	696537	Gear-Ring (Aluminum)
523	692014	Dipstick	617	Δ★692138	Seal-O Ring (Intake Manifold)			(Services Plastic Ring Gear Only)
524	★281370	Seal-Dipstick Tube	628	690661	Screw (Fuel Pump Bracket)	727	490324	Cover-Starter Drive
525	691398	Tube-Dipstick	633	695414	Seal-Choke/Throttle Shaft (Choke)	729	691335	Clip-Wire (Wiring Harness/Solenoid))
526	694476	Screw (Regulator) (Used After Code Date 99070500).	634	●690801	Spring/Seal Assembly (LMT 155)	729A	224723	Clip-Wire (Starter Motor)
		Note	634A	●690802	Spring/Seal Assembly (LMT 154)	732	691002	Screw (Starter Drive Cover)
		690326 Screw (Regulator) (Used Before Code Date 99070600).	635	691909	Boot-Spark Plug	733	698139	Screw (Crankshaft Extension) (Without Washer)
526A	692598	Screw (Regulator)	646	690460	Brace-Air Cleaner	737	691118	Screw (Oil Filter Adapter)
544	692034	Armature-Starter (3 5/8" Housing Length)	654	690958	Nut (Carburetor)	741	691284	Gear-Timing
544A	390837	Armature-Starter (3 5/8" Housing Length)	664	691087	Nut (Key Switch)	750	691033	Screw (Oil Pump Cover) (Used After Code Date 98063000).
		Note	668	690510	Spacer (Fuel Pump)	750A	692198	Screw (Oil Pump Cover) (Used Before Code Date 98070100).
		490309 Armature-Starter (4 3/8" Housing Length)	668A	691215	Spacer (Rotating Screen)	757	691714	Link-Counterweight
			668B	691500	Spacer (Rotating Screen)	758	692423	Counterweight
						759	691239	Pin-Counterweight
						761	691096	Screw (Counterweight)

★ Engine Gasket Set - Reference 358
 ● Carburetor Overhaul Kit - Reference 121
 ∅ Carburetor Overhaul Kit - Reference 121A

◆ Carburetor Gasket Set - Reference 977
 ∇ Carburetor Gasket Set - Reference 977A
 Δ Valve Gasket Set - Reference 1095, 1095A

0295-14

Assemblies include all parts shown in frames.

08/11/2004

REF. NO.	PART NO.	DESCRIPTION	REF. NO.	PART NO.	DESCRIPTION	REF. NO.	PART NO.	DESCRIPTION
783	693713	Gear–Pinion (Steel Ring Gear Only)	851	692424	Terminal–Spark Plug	943	690589	Seal–O Ring (Oil Pump Cover)
783A	695708	Gear–Pinion	863	691204	Bracket–Muffler			(Used After Code Date 98063000).
788	692133	Bracket–Fuel Pump	863A	691205	Bracket–Muffler	943A	★690604	Seal–O Ring (Oil Pump Cover)
789	692037	Harness–Wiring	864	496750	Adapter–Muffler			(Used Before Code Date 98070100).
797	693167	Nut (Brush Retainer)	864A	697346	Adapter–Muffler Used on Type No(s). 0155, 0639, 0655, 0671, 0672, 0679, 0692.	947	692734	Solenoid–Fuel
801	691283	Cap–Drive	868	Δ★690968	Seal–Valve	947A	695423	Solenoid–Fuel (Nikki)
802	691286	Cap–End	875	696129	Base–Air Cleaner	947B	497672	Solenoid–Fuel
802A	395537	Cap–End (3 5/8" Housing Length)	876	696539	Kit–Pinion Spring	958	698183	Valve–Fuel Shut Off
803	693757	Housing–Starter (3 5/8" Housing Length)	877	393456	Wire/Connector– Alternator (Dual Circuit)	965	499613	Cover–Oil Pump (Used After Code Date 98063000).
803A	398159	Housing–Starter (3 5/8" Housing Length)	877A	393537	Wire/Connector– Alternator (Tri Circuit)	965A	496745	Cover–Oil Pump (Used Before Code Date 98070100).
		————— Note —————	877B	399916	Wire/Connector– Alternator (10 & 16 Amp Circuit)	967	272403	Filter–Pre Cleaner
		494205 Housing– Starter (4 3/8" Housing Length)	878	691237	Harness–Alternator	968	692355	Cover–Air Cleaner
810	691779	Extension–Crankshaft	878A	691955	Harness–Alternator	969	690365	Screw (Blower Housing Cover)
813	690635	Clamp	883	Δ★692236	Gasket–Exhaust	969A	691108	Screw (Blower Housing Cover)
819	690297	Screw (Muffler Bracket)	884	690853	Clamp–Muffler	971	692129	Screw (Air Cleaner Base) (Used After Code Date 97100500).
819A	691678	Screw (Muffler Bracket)	892	692318	Switch–Key			————— Note —————
819B	691676	Screw (Muffler Bracket)	896	691641	Pin–Drive Retainer	975	495933	Bowl–Float
823	698941	Screw (Muffler Adapter)	914	691108	Screw (Rocker Cover)	975A	695417	Bowl–Float
830	691095	Stud–Rocker Arm	918	393815	Hose–Vacuum (Cut to Required Length)	977	690192	Gasket Set–Carburetor
842	★691870	Seal–O Ring	920	692656	Solenoid–Starter	977A	695428	Gasket Set–Carburetor (Nikki)
847	496415	Dipstick/Tube Assembly	921	690495	Cover–Blower Housing (Red)	987	●691326	Seal–Throttle Shaft
					————— Note —————	987A	692001	Seal–Throttle Shaft (LMT 33, 34)
					690496 Cover–Blower Housing (Black)	987B	●698777	Seal–Throttle Shaft
					225175 Cover–Blower Housing (Black) Used on Type No(s). 0168, 0668.	988	★691317	Gasket–Oil Adapter
			934	691058	Screw (Fan Retainer)	990	691959	Key Set
						994	392390	Arrestor–Spark
						996	690678	Shield–Air Cleaner

★ Engine Gasket Set – Reference 358
● Carburetor Overhaul Kit – Reference 121
∅ Carburetor Overhaul Kit – Reference 121A

◆ Carburetor Gasket Set – Reference 977
▽ Carburetor Gasket Set – Reference 977A
Δ Valve Gasket Set – Reference 1095, 1095A

28Q700

REF. NO.	PART NO.	DESCRIPTION	REF. NO.	PART NO.	DESCRIPTION	REF. NO.	PART NO.	DESCRIPTION
1005	697853	Fan-Flywheel	1036	695700	Label-Emissions (Used After Code Date 00063000).	1058	274789	Operator's Manual (Emissions)
1006	690452	Retainer-Fan						Note ——— 272904 Operator's Manual
1017	690770	Screen-Oil Pump (Used After Code Date 98071900).			694997 Label-Emissions (Used After Code Date 99093000 and Before Code Date 00070100).	1059	698516	Kit-Screw/Washer (Alternator)
1017A	691216	Screen-Oil Pump			694318 Label-Emissions (Used Before Code Date 99010100 and After Code Date 98123100).	1070	690372	Screw (Flywheel Fan)
1017B	225019	Screen-Oil Pump (Used Before Code Date 94110700).			499364 Label-Emissions (Used Before Code Date 99010100 and After Code Date 97052500).	1083	690958	Nut (End Cap) (Serrated)
1019	496758	Kit-Label			499363 Label-Emissions (Used Before Code Date 97052600).	1083A	691626	Nut (End Cap)
1022	Δ*272475	Gasket-Rocker Cover				1090	691293	Retainer-Brush
1023	692492	Cover-Rocker				1091	691333	Cap-Limiter
1023A	691192	Cover-Rocker				1095	691581	Gasket Set-Valve (Used After Code Date 97100500).
1024	499054	Pump-Oil (Used After Code Date 98063000).				1095A	495992	Gasket Set-Valve (Used Before Code Date 97100600).
1024A	493884	Pump-Oil (Used Before Code Date 98070100).				1119	691183	Screw (Alternator)
1026	692003	Rod-Push (Intake) Note ——— 692011 Rod-Push (Exhaust)	1051	691265	Ring-Retaining	1127	695407	Screw (Float Bowl)
1027	492932	Filter-Oil	1054	280275	Tie-Cable	1330	272147	Repair Manual
1028	496744	Adapter-Oil Filter	1055	690528	Tube-Oil Pump			
1029	691751	Arm-Rocker						
1032	491710	Ball-Oil Pump						
1034	690822	Guide-Push Rod						
1035	693784	Shaft-Pump (Used After Code Date 98063000).						

★ Engine Gasket Set – Reference 358
 ● Carburetor Overhaul Kit – Reference 121
 ∅ Carburetor Overhaul Kit – Reference 121A
0295-16

◆ Carburetor Gasket Set – Reference 977
 ∇ Carburetor Gasket Set – Reference 977A
 Δ Valve Gasket Set – Reference 1095, 1095A

Assemblies include all parts shown in frames.

08/11/2004