

583400 to 583499

Illustrated Parts List

Model Series

583400 to 583499

GAS

TYPE NUMBERS
0217.

TO FIND
THE CORRECT NUMBER OF THE PART YOU NEED:
FOLLOW THE INSTRUCTIONS BELOW

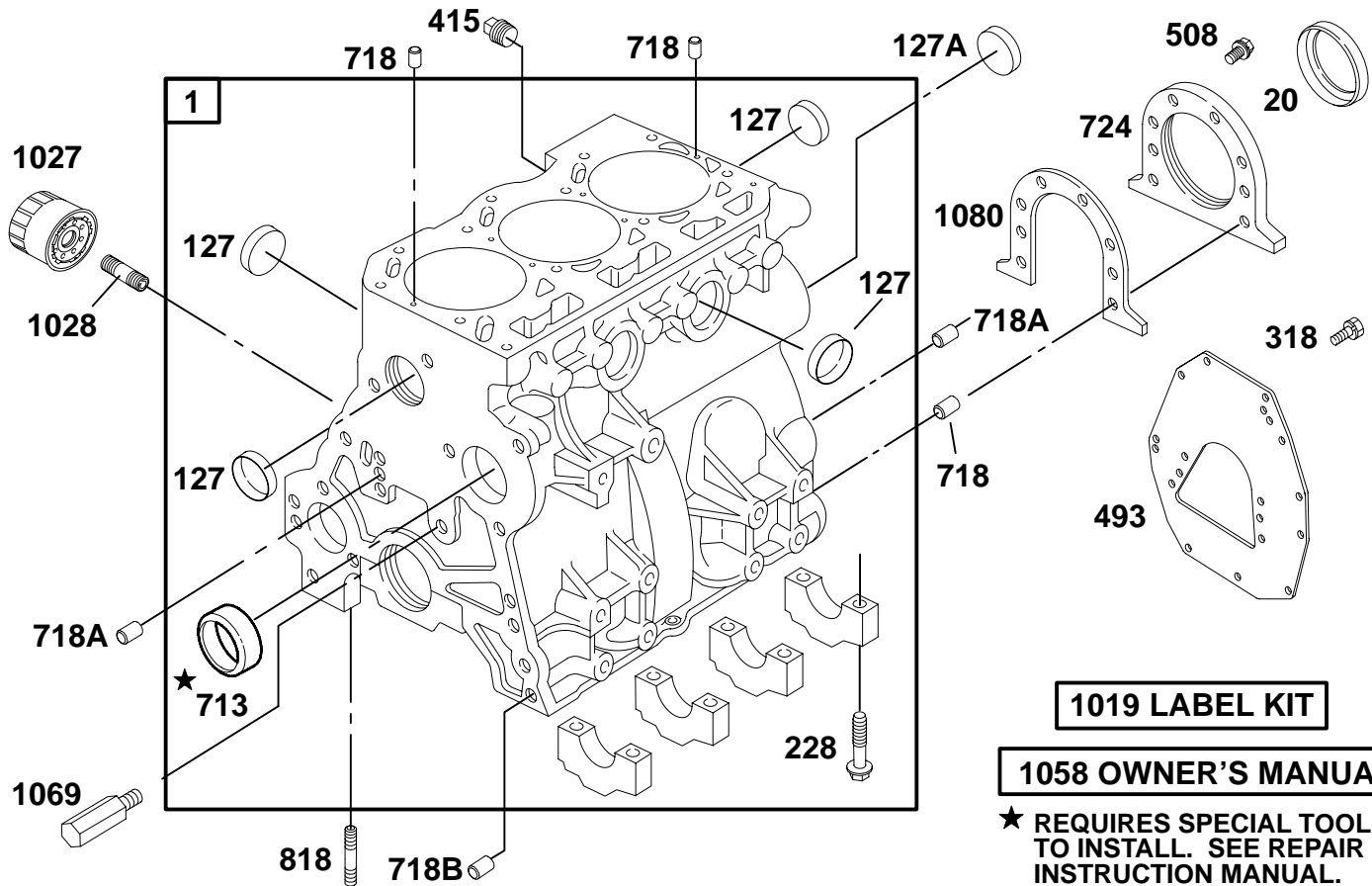
- A. Refer to Model, Type and Code Number that is located on the engine. Engine type numbers such as 0123 01 are listed only as 0123 in most instances. The two digits (01 or 02, etc.) to the right of the space may be required for more accurate parts identification in some instances. Select the Illustrated Parts List covering the correct Model Series and Type Number.
- B. Refer to the Illustrations and compare the original part with Illustration. The number next to the illustration is the Reference Number. Assemblies include all parts shown in frames. All parts shown in assembly frames having individual reference numbers can be purchased separately.
- C. After the Reference Number has been identified, refer to the Numerical text, where Reference and Primary Part Number are listed. **THE PRIMARY PART IS USED ON ALL TYPE NUMBERS EXCEPT THOSE TYPE NUMBERS UNDER "NOTE."**
- D. If a "Note" appears below the Primary Part Number, it means that this part differs from the Primary Part for certain types. If your Type number is listed under "Note," order the part referred to at the "Note."
- E. If your Engine Type Number does not appear after any part number listed under "Note," use the Primary Part Number.
- F. For Engine Type Numbers not covered by this book, check other Parts Lists having the same engine model or contact your source of supply.

PRINTED IN U.S.A.



COPYRIGHT by BRIGGS & STRATTON DAIHATSU LLC
All rights reserved. No part of this material may be reproduced or transmitted, in any form or by any means, electronic or mechanical, including photocopying, recording or by any information storage and retrieval system, without permission in writing from Briggs & Stratton DAIHATSU LLC.

583400 to 583499



REF. NO.	PART NO.	DESCRIPTION	REF. NO.	PART NO.	DESCRIPTION	REF. NO.	PART NO.	DESCRIPTION
1	▽ 825335	Cylinder Assembly	493	▽ 820170	Bracket-Mounting	1019	825228	Kit-Label (Identification Labels)
20	★820056	Seal-Oil (PTO Side)	508	820031	Screw (Seal Retainer)	1027	491056	Filter-Oil
127	820004	Plug-Welch	713	▽ 820129	Bushing-Crankshaft	Note		
127A	▽ 820151	Plug-Welch (Camshaft)	718	820063	Pin-Locating		820314	Filter-Oil (Optional)
228	820042	Screw (Bearing Support)	718A	820062	Pin-Locating	1028	820851	Adapter-Oil Filter
318	820176	Screw (Mounting Bracket)	718B	820061	Pin-Locating	1058	820481	Owner's Manual
415	▽ 820051	Plug	724	▽ 820146	Retainer-Seal	1069	▽ 820102	Nozzle-Oil
			818	820016	Stud (Oil Pump Screen)	1080	★820145	Gasket-Seal Retainer

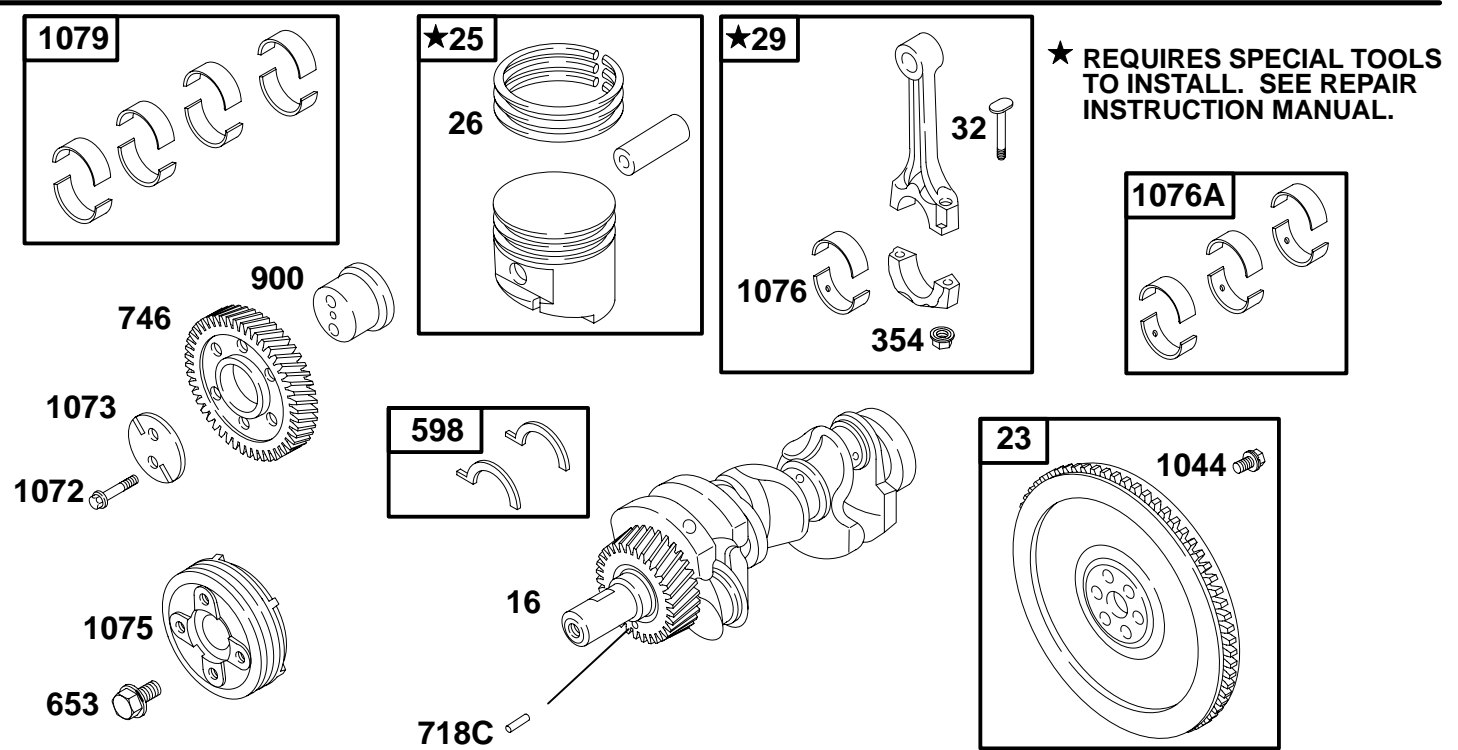
▽ Refer To Repair Manual MS 0750 For Assembly and/or Torque Requirements.

★ Included in Engine Gasket Set-See Ref. 358.

◆ Included in Carburetor Overhaul Kit -See Ref.121.

△ Included in Valve Gasket Set-See Ref.1095.

583400 to 583499



REF. NO.	PART NO.	DESCRIPTION	REF. NO.	PART NO.	DESCRIPTION	REF. NO.	PART NO.	DESCRIPTION
16	▽ 825318	Crankshaft	354	820073	Nut (Connecting Rod)	1072	820081	Screw (Idle Gear Plate)
23	▽ 825303	Flywheel	598	▽ 820140	Shim-Endplay (Crankshaft) (Standard)	1073	820117	Plate-Idle Gear
25	▽ 825203	Piston Assembly (Standard)				1075	820236	Pulley-Crankshaft
		Note				1076	▽ 820142	Bearing-Rod (Standard)
		825204 Piston Assembly (.010" Oversize)						
26	▽ 825036	Ring Set				1076A	▽ 825019	Bearing Set-Rod (Standard) (Includes 3 Bearings)
		Note						Note
		825034 Ring Set (.010" Oversize)	653	820079	Screw (Crankshaft Pulley)			▽ 825060 Bearing Set-Rod (.010" Undersize) (Includes 3 Bearings)
29	▽ 825033	Rod-Connecting	718C	820059	Pin-Locating			
32	▽ 820128	Screw (Connecting Rod)	746	▽ 820611	Gear-Idler	1079	▽ 825040	Bearing Set-Main (Standard)
			900	▽ 820116	Shaft-Gear			Note
			1044	820080	Screw (Flywheel)			▽ 825039 Bearing Set-Main (.010" Undersized)

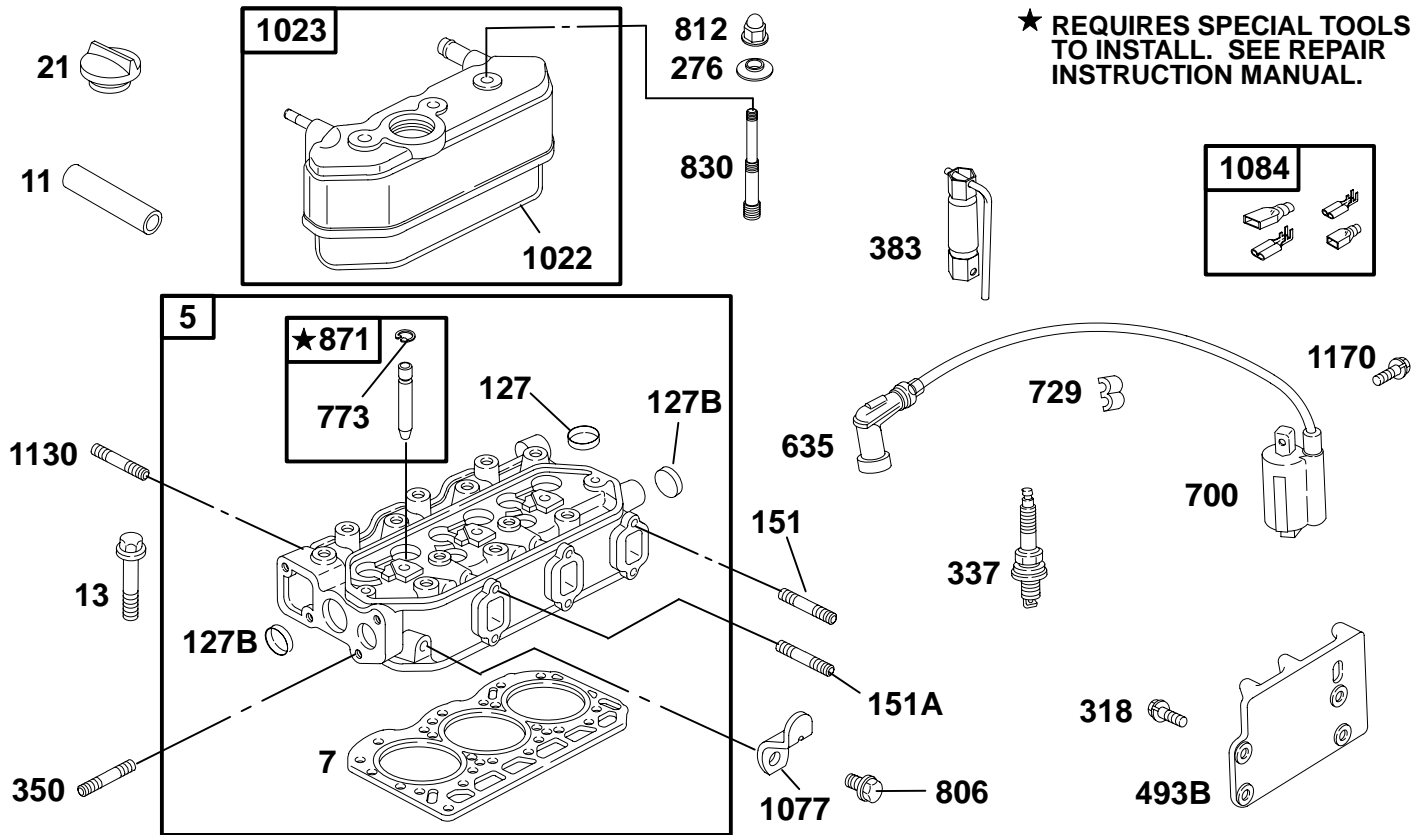
▽ Refer To Repair Manual MS 0750 For Assembly and/or Torque Requirements.

★ Included in Engine Gasket Set-See Ref. 358.

◆ Included in Carburetor Overhaul Kit -See Ref.121.

△ Included in Valve Gasket Set-See Ref.1095.

583400 to 583499



REF. NO.	PART NO.	DESCRIPTION	REF. NO.	PART NO.	DESCRIPTION	REF. NO.	PART NO.	DESCRIPTION
5	▽ 825376	Head-Cylinder	276	★△ 820064	Washer-Sealing (Rocker Cover)	806	820024	Screw (Lifting Bracket)
7	★△ 820648	Gasket-Cylinder Head	318	820024	Screw (Mounting Bracket)	812	820071	Nut (Rocker Cover)
11	820886	Tube-Breather (Cylinder Head)	337	491055	Sparkplug	830	820076	Stud-Rocker Arm
13	820623	Screw	350	820078	Stud (Water Pump)	871	▽ 825030	Bushing-Valve Guide
21	825024	Cap-Oil Fill	383	19374	Wrench-Sparkplug	1022	★△ 820150	Gasket-Rocker Cover
127	820004	Plug-Welch	493B	820083	Bracket-Mounting	1023	825277	Cover-Rocker
127B	820005	Plug-Welch	635	▽ 820084	Boot-Sparkplug	1077	820260	Bracket-Lifting
151	820014	Stud (Exhaust Manifold)	700	820037	Coil-Ignition	1084	825155	Connector-Terminal
151A	820466	Stud (Exhaust Manifold)	729	820046	Clip-Wire	1130	820015	Stud (Intake Manifold)
			773	820130	Retainer	1170	820012	Screw (Ignition Coil)

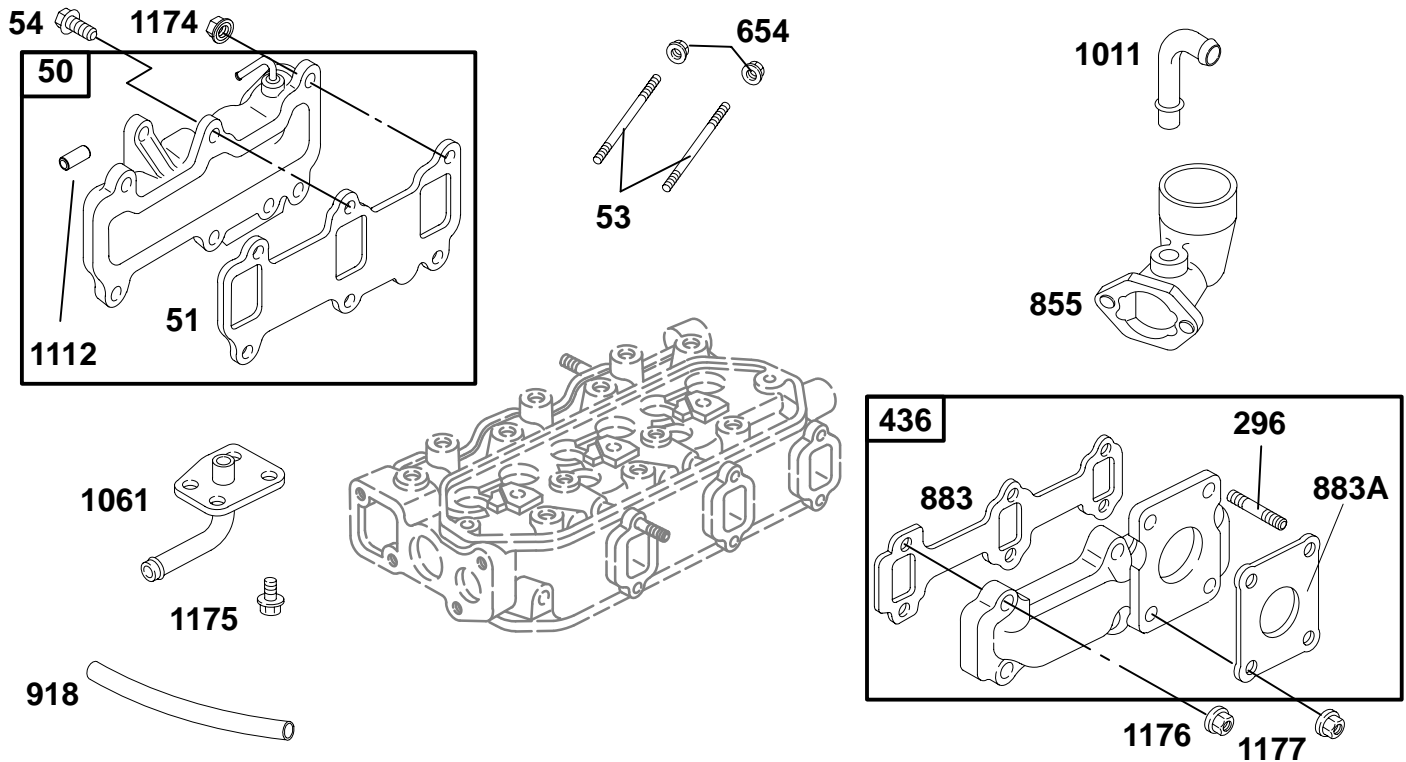
▽ Refer To Repair Manual MS 0750 For Assembly and/or Torque Requirements.

★ Included in Engine Gasket Set-See Ref. 358.

◆ Included in Carburetor Overhaul Kit -See Ref.121.

△ Included in Valve Gasket Set-See Ref.1095.

583400 to 583499



REF. NO.	PART NO.	DESCRIPTION	REF. NO.	PART NO.	DESCRIPTION	REF. NO.	PART NO.	DESCRIPTION
50	▽ 825260	Manifold-Intake	654	820011	Nut (Carburetor)	1174	820069	Nut (Intake Manifold)
51	820087	Gasket-Manifold	855	820882	Adapter-Air Cleaner	1175	820031	Screw (Outlet Cover)
53	820861	Stud (Carburetor)	883	★△820817	Gasket-Exhaust	1176	820010	Nut (Exhaust Manifold)
54	820034	Screw (Intake Manifold)	883A	★820670	Gasket-Exhaust	1177	820178	Nut (Muffler)
296	820553	Stud (Muffler)	918	820393	Hose-Vacuum			
436	▽ 825055	Manifold-Exhaust	1011	820184	Vent-Tube			
			1061	▽ 820090	Cover-Outlet			
			1112	820543	Plug-Vent			

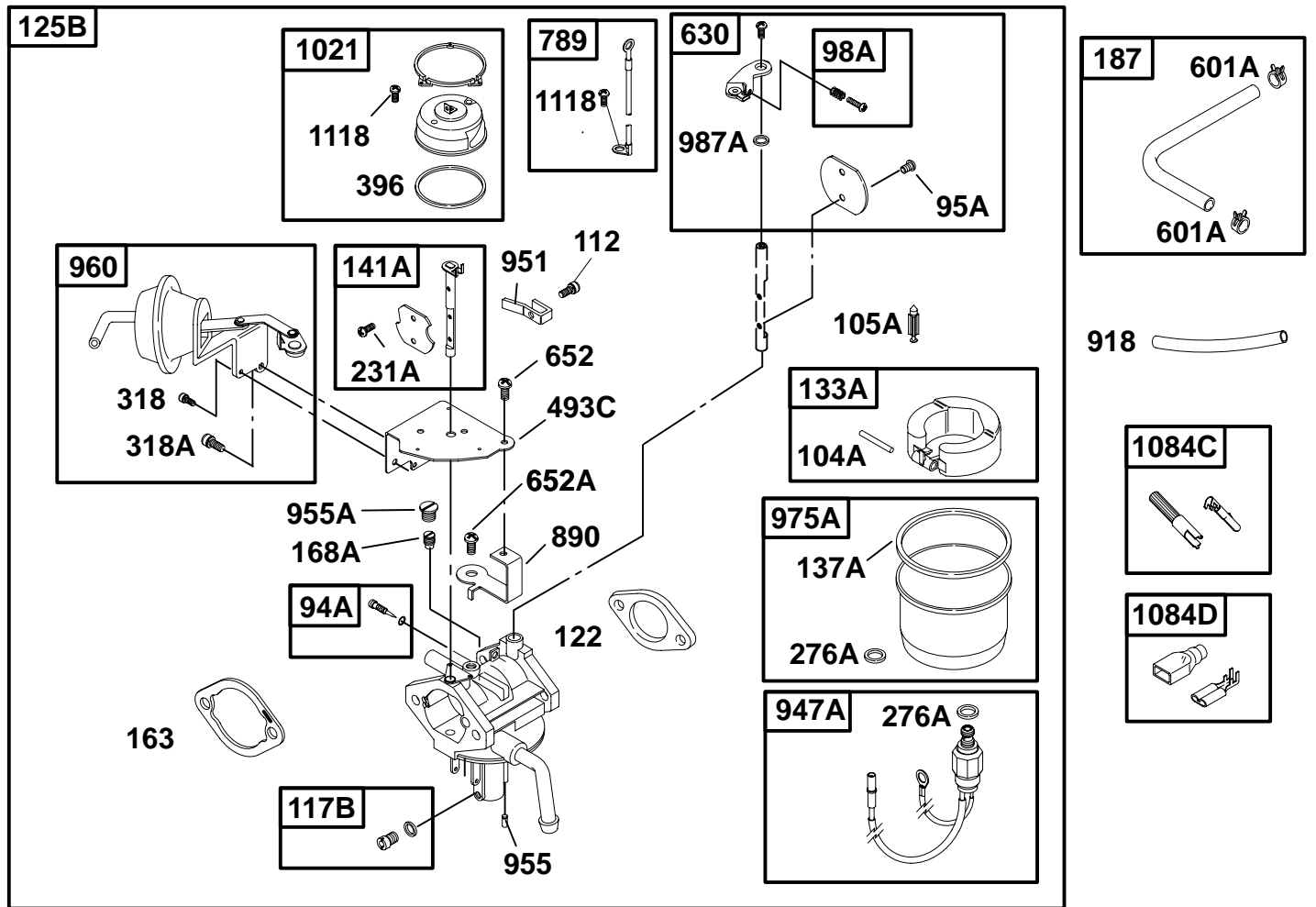
▽ Refer To Repair Manual MS 0750 For Assembly and/or Torque Requirements.

★ Included in Engine Gasket Set-See Ref. 358.

◆ Included in Carburetor Overhaul Kit -See Ref.121.

△ Included in Valve Gasket Set-See Ref.1095.

583400 to 583499



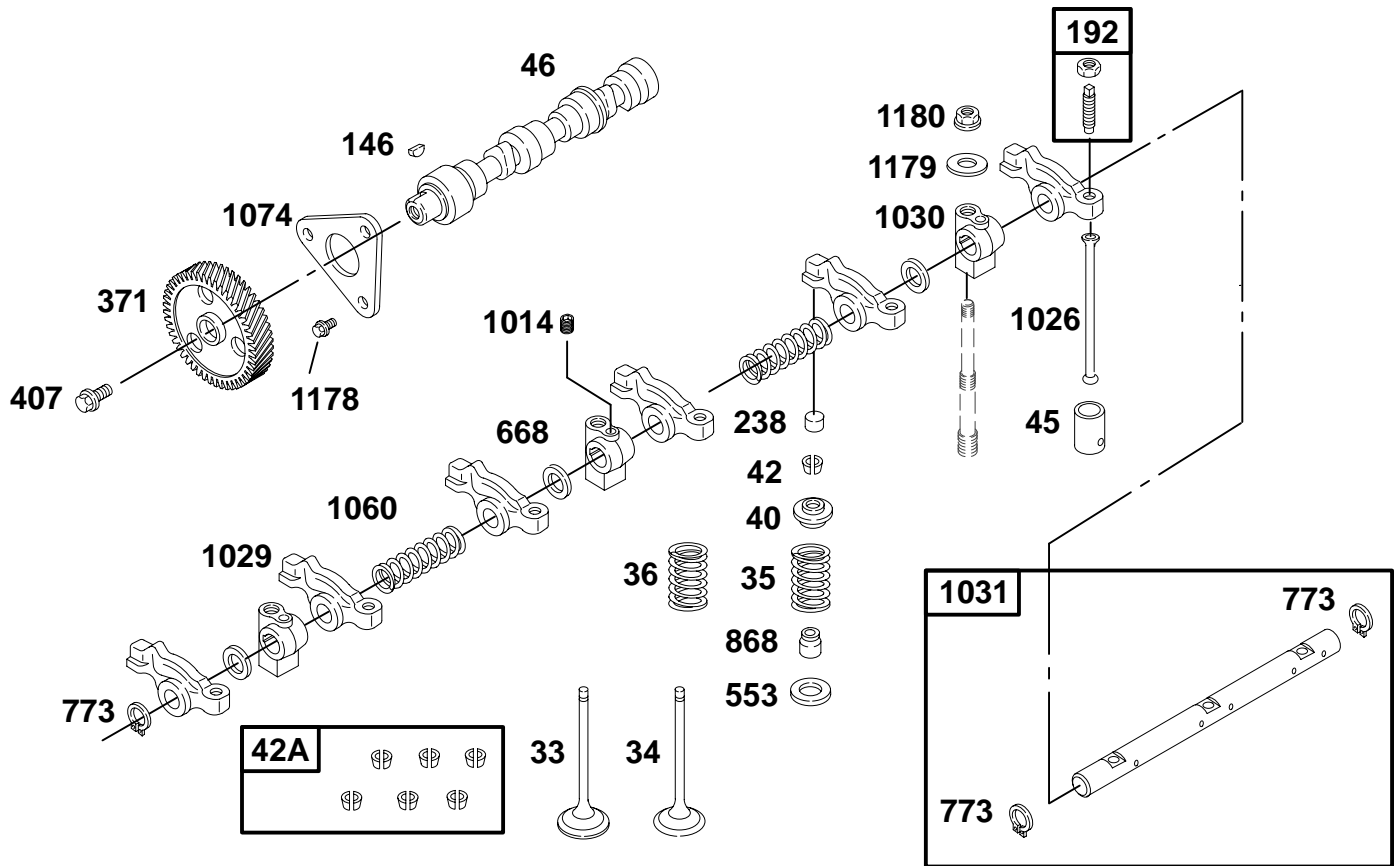
REF. NO.	PART NO.	DESCRIPTION	REF. NO.	PART NO.	DESCRIPTION	REF. NO.	PART NO.	DESCRIPTION
94A	◆825249	Kit-Idle Mixture	133A	825248	Float-Carburetor	652A	820514	Screw (Support Bracket)
95A	★◆820504	Screw (Throttle Valve)	137A	◆820508	Gasket-Float Bowl	789	825257	Harness-Wiring
98A	825250	Kit-Idle Speed	141A	825251	Kit-Choke Shaft	890	820517	Bracket-Support
104A	◆693506	Pin-Float Hinge	163	★◆820385	Gasket-Air Cleaner	918	820393	Hose-Vacuum (Carburetor To Manifold)
105A	◆820506	Valve-Float Needle	168A	◆820603	Jet-Idle Circuit	947A	825255	Solenoid-Fuel
112	690718	Screw (Choke Lever)	187	825044	Line-Fuel	951	820509	Lever-Choke
117B	825439	Jet-Main (Standard)	231A	◆★820504	Screw (Choke Valve)	955	◆820510	Plug-Carburetor
118	825470	Jet-Main (High Altitude) (#132 2,400-6,600 Feet)	276A	◆820511	Washer-Sealing	955A	◆820520	Plug-Carburetor
118A	825291	Jet-Main (High Altitude) (#126 6,000-10,000 Feet)	318	820512	Screw (Mounting Bracket)	960	825253	Break-Vacuum Choke
122	◆820082	Spacer-Carburetor	318A	820513	Screw (Mounting Bracket)	975A	825247	Bowl-Float
125B	825456	Carburetor (Auto Choke) (Electronic Governor)	396	◆820515	Gasket-Choke Cover	987A	◆	Seal-Throttle Shaft (Sold In Kit Only)
			493C	820516	Bracket-Mounting	1021	825252	Activator-Choke
			601A	820006	Clamp-Hose	1084C	825158	Connector-Terminal (Solenoid)
			630	825440	Lever/Plate-Throttle (To Replace Throttle Shaft, Order Ref 125)	1084D	825160	Connector-Terminal (Electronic Choke)
			652	690718	Screw Mounting Bracket)	1118	690718	Screw (Choke Activator)

▽ Refer To Repair Manual MS 0750 For Assembly and/or Torque Requirements.

★ Included in Engine Gasket Set-See Ref. 358.

◆ Included in Carburetor Overhaul Kit -See Ref.121.

△ Included in Valve Gasket Set-See Ref.1095.



REF. NO.	PART NO.	DESCRIPTION	REF. NO.	PART NO.	DESCRIPTION	REF. NO.	PART NO.	DESCRIPTION
33	820114	Valve—Exhaust	146	691639	Key—Timing	1014	820105	Screw (Rocker Arm Support)
34	820115	Valve—Intake	192	825041	Adjuster—Rocker Arm	1026	820422	Rod—Push
35	820043	Spring—Valve (Intake)	238	820113	Cap—Valve	1029	▽ 820387	Arm—Rocker
36	820043	Spring—Valve (Exhaust)	371	820613	Gear—Cam	1030	▽ 820106	Support—Rocker Arm
40	820111	Retainer—Valve	407	820075	Screw (Cam Gear)	1031	▽ 825093	Shaft—Rocker Arm
42	825042	Keeper—Valve (Contains 1 Set of 6 Sets Required)	553	820112	Retainer—Valve Spring	1060	▽ 820044	Spring—Rocker Shaft
42A	825082	Keeper—Valve (Contains 6 Sets)	668	▽ 820065	Spacer (Rocker Arm Shaft)	1074	820118	Retainer—Camshaft
45	820110	Tappet—Valve	773	820003	Retainer	1178	820032	Screw (Camshaft Retainer)
46	820388	Camshaft	868	820041	Seal—Valve	1179	820177	Washer (Rocker Arm Support)
						1180	820070	Nut (Rocker Arm Support)

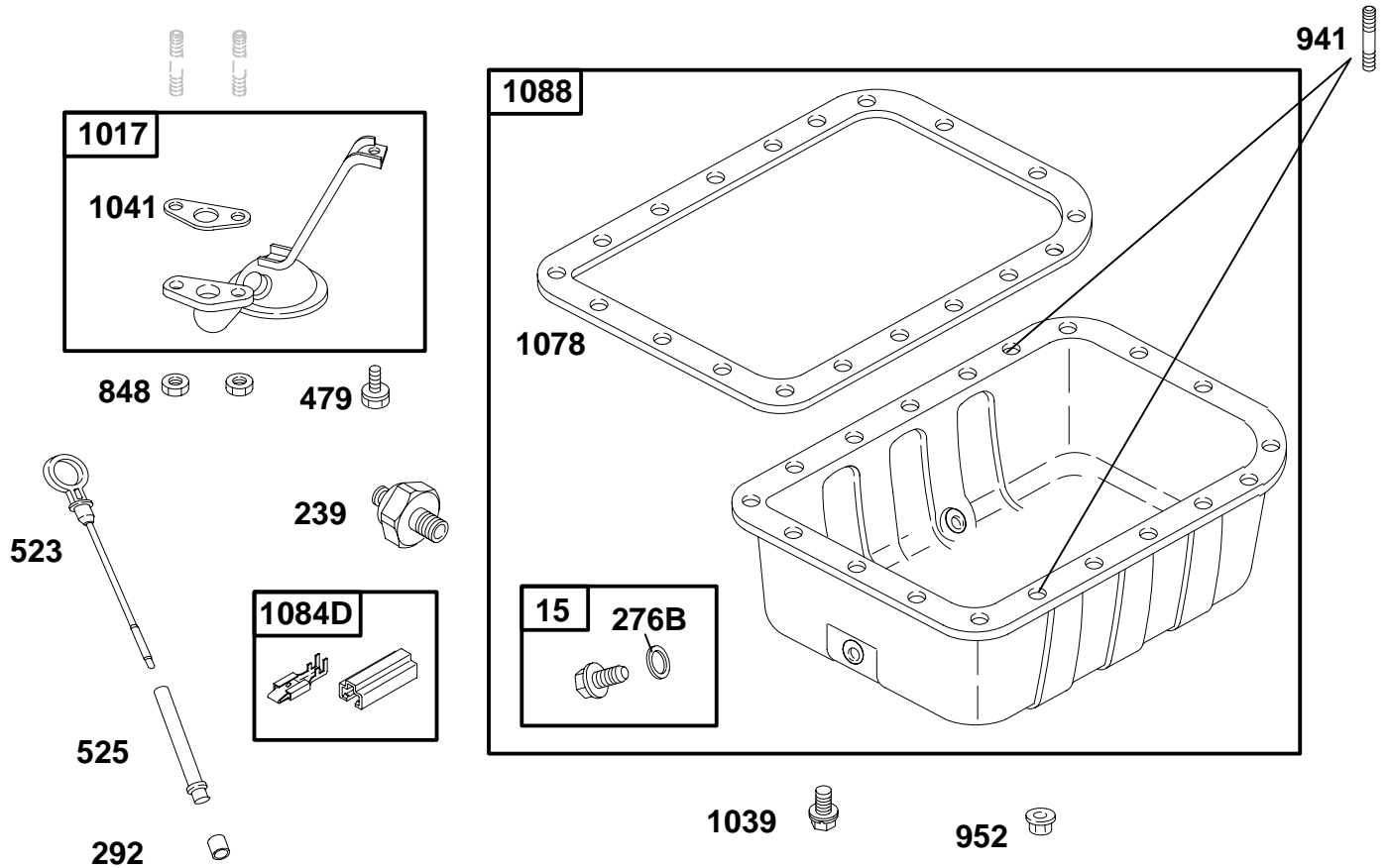
▽ Refer To Repair Manual MS 0750 For Assembly and/or Torque Requirements.

★ Included in Engine Gasket Set—See Ref. 358.

◆ Included in Carburetor Overhaul Kit—See Ref.121.

△ Included in Valve Gasket Set—See Ref.1095.

583400 to 583499



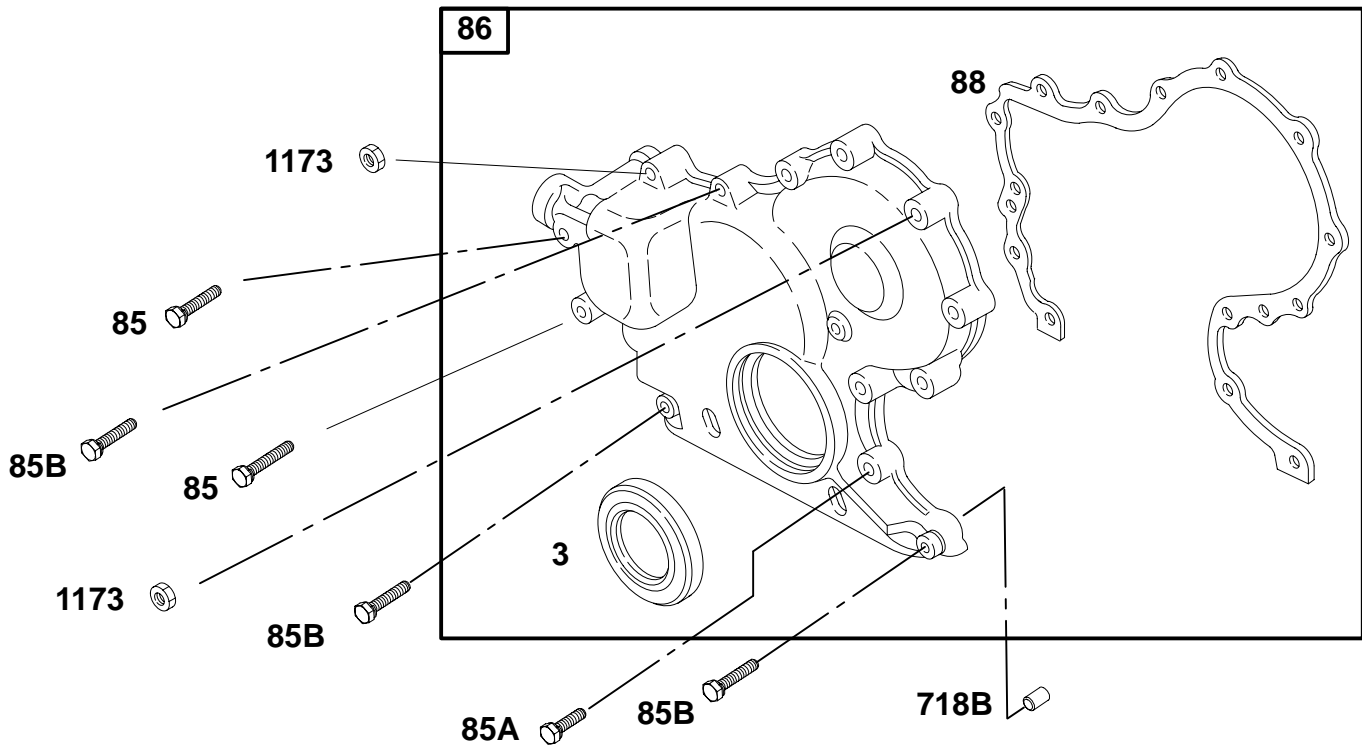
REF. NO.	PART NO.	DESCRIPTION	REF. NO.	PART NO.	DESCRIPTION	REF. NO.	PART NO.	DESCRIPTION
15	825278	Plug–Oil Drain (16mm Diameter Plug) (Requires 2 For Dual Drain Oil Pans)	479	820034	Screw (Oil Pump Screen)	1017	825089	Screen–Oil Pump
239	825000	Switch–Oil Pressure	523	820103	Dipstick	1039	820034	Screw (Oil Pan)
276B	820582	Washer–Sealing (Oil Drain Plug) (Requires 2 For Dual Drain Oil Pans)	525	820144	Tube–Dipstick	1041	820104	Gasket–Oil Pump Screen
292	820662	Collar–Dipstick Tube	848	820069	Nut (Oil Pump Screen)	1078	820137	Gasket–Oil Pan
			941	820017	Stud (Oil Pan)	1084D	825154	Connector–Terminal (Oil Pressure Switch)
			952	820068	Nut (Oil Pan)	1088	825285	Pan–Oil (Dual Drain)

▽ Refer To Repair Manual MS 0750 For Assembly and/or Torque Requirements.

★ Included in Engine Gasket Set–See Ref. 358.

◆ Included in Carburetor Overhaul Kit –See Ref.121.

△ Included in Valve Gasket Set–See Ref.1095.



REF. NO.	PART NO.	DESCRIPTION	REF. NO.	PART NO.	DESCRIPTION	REF. NO.	PART NO.	DESCRIPTION
3	★820055	Seal—Oil (Magneto Side)	86	▽ 825119	Cover—Gear	718B	820061	Pin—Locating
85	820026	Screw (Gear Cover to Gear Reduction Case)	88	★820148	Gasket—Gear Reduction Cover	1173	820069	Nut (Gear Cover)
85A	820029	Screw (Gear Cover to Gear Reduction Case)						
85B	820027	Screw (Gear Cover to Gear Reduction Case)						

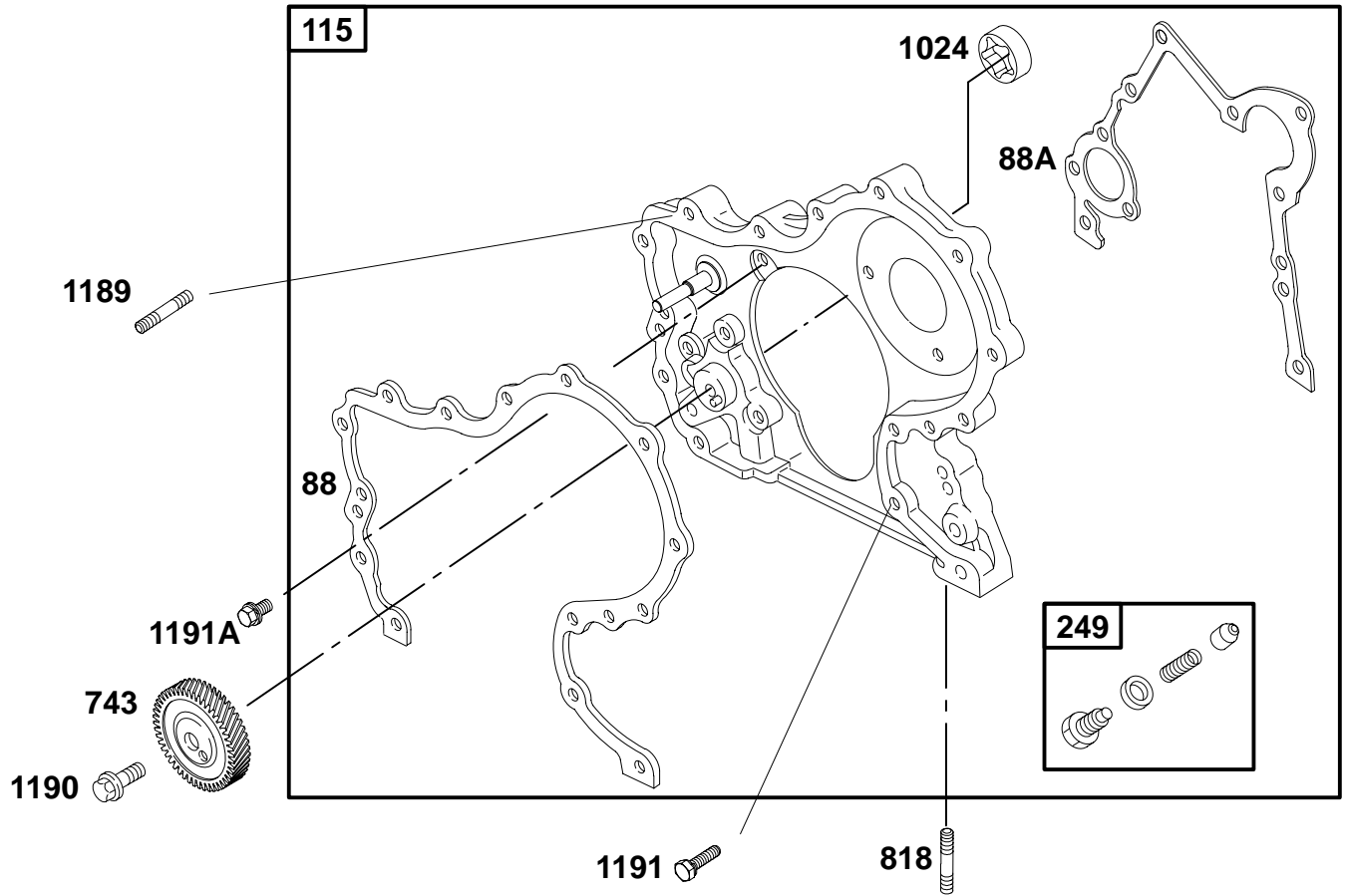
▽ Refer To Repair Manual MS 0750 For Assembly and/or Torque Requirements.

★ Included in Engine Gasket Set—See Ref. 358.

◆ Included in Carburetor Overhaul Kit —See Ref.121.

△ Included in Valve Gasket Set—See Ref.1095.

583400 to 583499



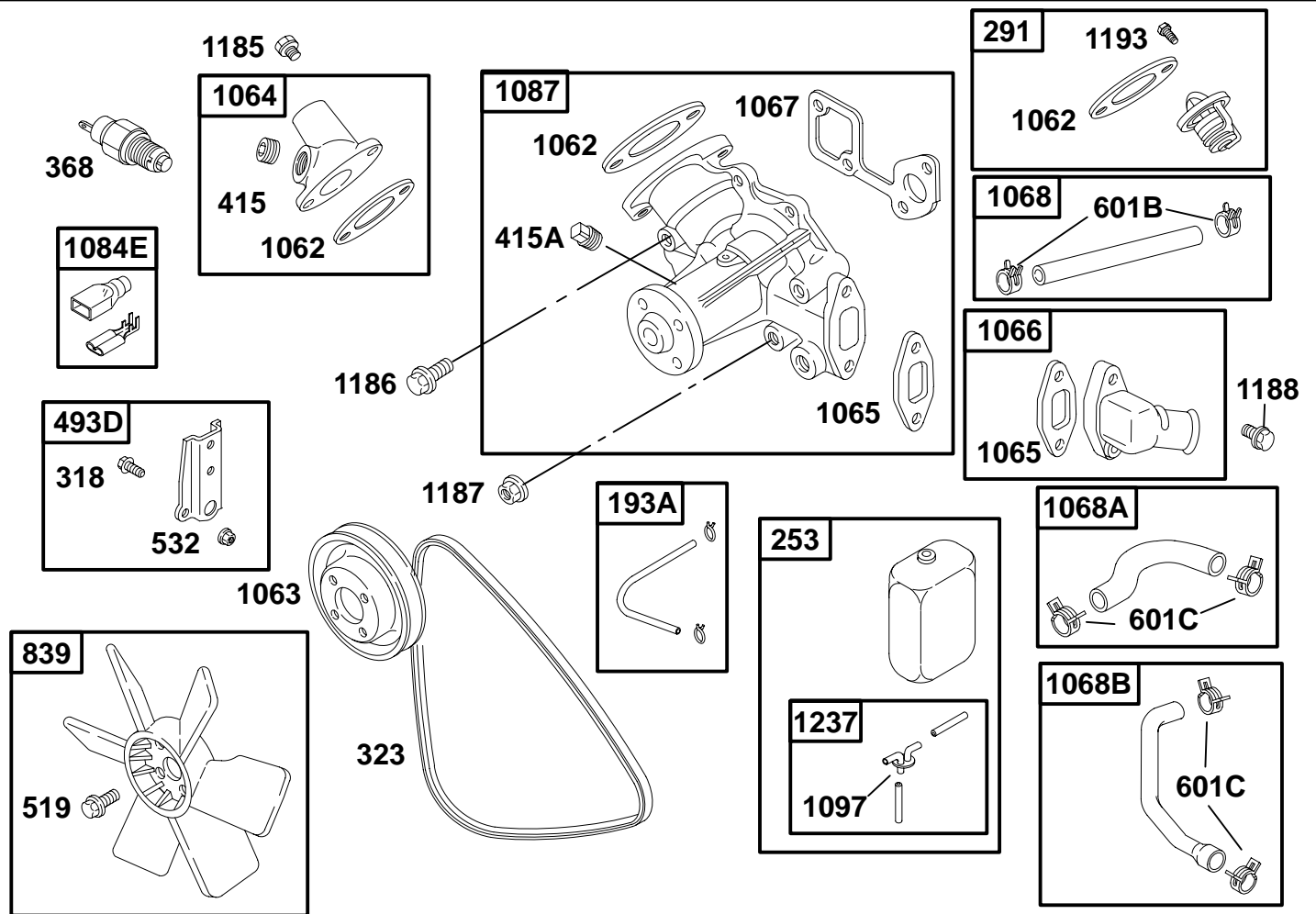
REF. NO.	PART NO.	DESCRIPTION	REF. NO.	PART NO.	DESCRIPTION	REF. NO.	PART NO.	DESCRIPTION
88	★820148	Gasket–Gear Reduction Cover	818	820016	Stud (Oil Pump Screen)	1190	820180	Screw (Drive Gear)
88A	★820155	Gasket–Gear Reduction Cover	1024		Oil Pump (Sold in Gear Housing Only, Ref 115)	1191	820030	Screw (Gear Housing)
115	▽ 825120	Housing–Gear	1189	820156	Stud (Gear Housing)	1191A	820033	Screw (Gear Housing)
249	▽ 825032	Valve–Pressure Relief						
743	820615	Gear–Drive						

▽ Refer To Repair Manual MS 0750 For Assembly and/or Torque Requirements.

★ Included in Engine Gasket Set–See Ref. 358.

◆ Included in Carburetor Overhaul Kit –See Ref.121.

△ Included in Valve Gasket Set–See Ref.1095.



REF. NO.	PART NO.	DESCRIPTION	REF. NO.	PART NO.	DESCRIPTION	REF. NO.	PART NO.	DESCRIPTION
193A	825296	Hose-Reserve Tank	601B	820045	Clamp-Hose	1084E	825160	Connector-Terminal (Water Temperature Switch)
253	825462	Tank-Reserve	601C	820256	Clamp-Hose	1087	▽ 825275	Pump-Water
291	825064	Thermostat	839	▽ 825223	Fan-Radiator	1097	▽ 820287	Cap-Surge Tank
318	820033	Screw (Mounting Bracket)	1062	★820093	Gasket-Outlet Housing	1185	820031	Screw (Outlet Housing)
323	▽ 820271	Belt-Vee	1063	820095	Pulley-Pump	1186	820022	Screw (Water Pump)
368	820208	Switch-Water Temperature	1064	825074	Housing-Outlet	1187	820181	Nut (Water Pump)
415	820052	Plug (Outlet Housing)	1065	★820098	Gasket-Inlet Housing	1188	820031	Screw (Inlet Housing)
415A	820182	Plug (Water Pump)	1066	825051	Housing-Inlet	1193	820185	Screw (Thermostat)
493D	825106	Bracket-Mounting	1067	★820100	Gasket-Water Pump	1237	825461	Cap/Hose-Reserve
519	820030	Screw (Radiator Fan)	1068	825045	Hose/Clamp Assembly			
532	820011	Nut (Mounting Bracket)	1068A	825134	Hose/Clamp Assembly			
			1068B	825133	Hose/Clamp Assembly			

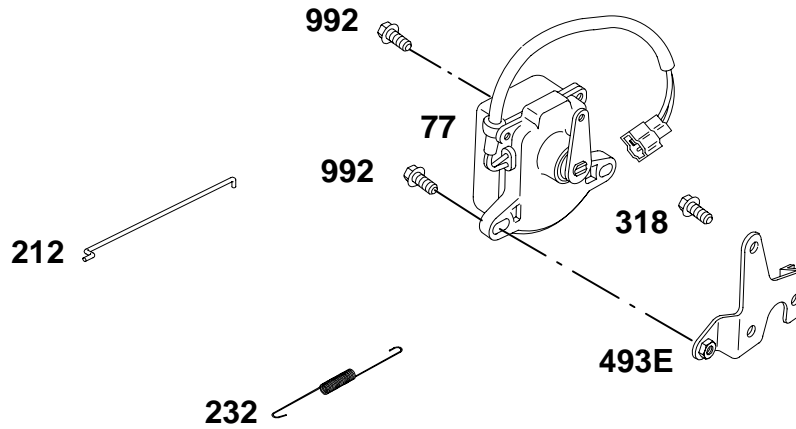
▽ Refer To Repair Manual MS 0750 For Assembly and/or Torque Requirements.

★ Included in Engine Gasket Set-See Ref. 358.

◆ Included in Carburetor Overhaul Kit -See Ref.121.

△ Included in Valve Gasket Set-See Ref.1095.

583400 to 583499



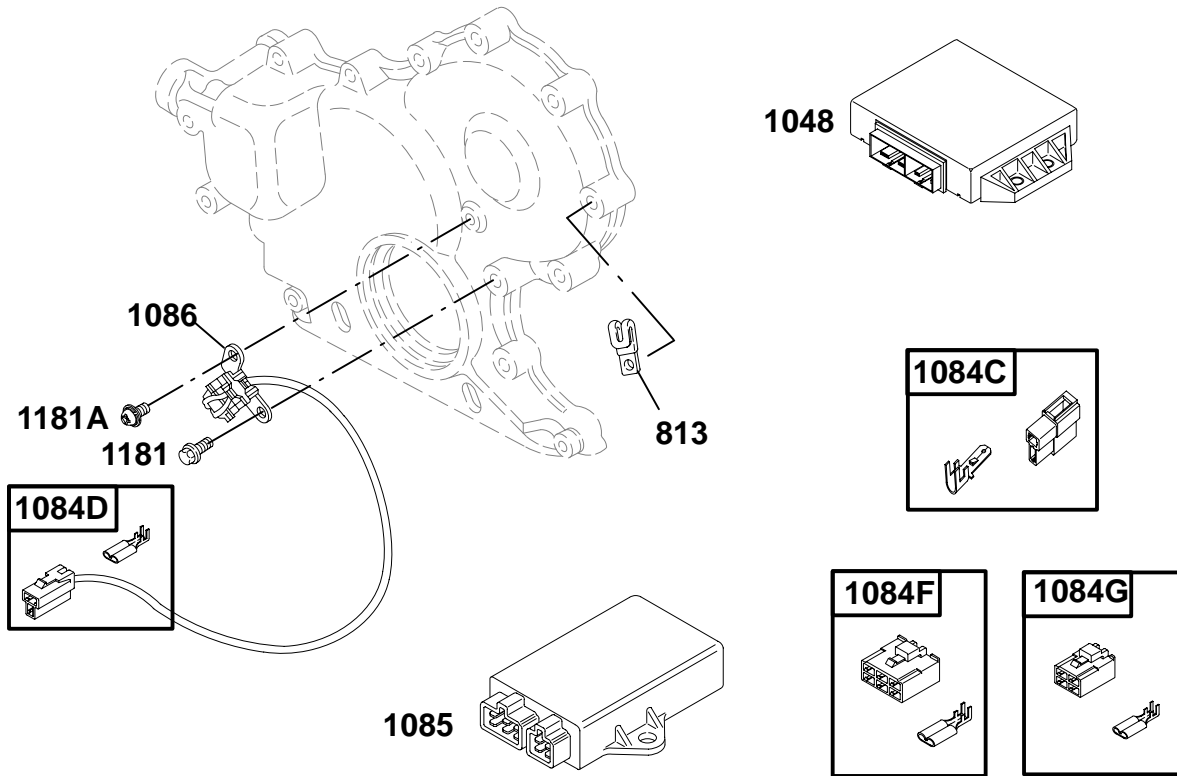
REF. NO.	PART NO.	DESCRIPTION	REF. NO.	PART NO.	DESCRIPTION	REF. NO.	PART NO.	DESCRIPTION
77	820209	Motor-Server	318	820878	Screw (Mounting Bracket)	992	820880	Screw (Servo Motor)
212	820226	Link-Throttle	493E	820876	Bracket-Mounting			
232	820227	Spring-Governor Link						

▽ Refer To Repair Manual MS 0750 For Assembly and/or Torque Requirements.

★ Included in Engine Gasket Set-See Ref. 358.

◆ Included in Carburetor Overhaul Kit -See Ref.121.

△ Included in Valve Gasket Set-See Ref.1095.



REF. NO.	PART NO.	DESCRIPTION	REF. NO.	PART NO.	DESCRIPTION	REF. NO.	PART NO.	DESCRIPTION
813	820047	Clamp	1084C	825156	Connector-Terminal (Trigger, Female)	1085	825273	Module-Ignition
1048	825473	Module-Electronic Governor	1084D	825157	Connector-Terminal (Alternator and Ignition Trigger, Male)	1086	825009	Trigger-Ignition
			1084F	825162	Connector-Terminal (Ignition Module, Male)	1181	820029	Screw (Ignition Trigger)
			1084G	825163	Connector-Terminal (Ignition Module, Male)	1181A	820013	Screw (Ignition Trigger)

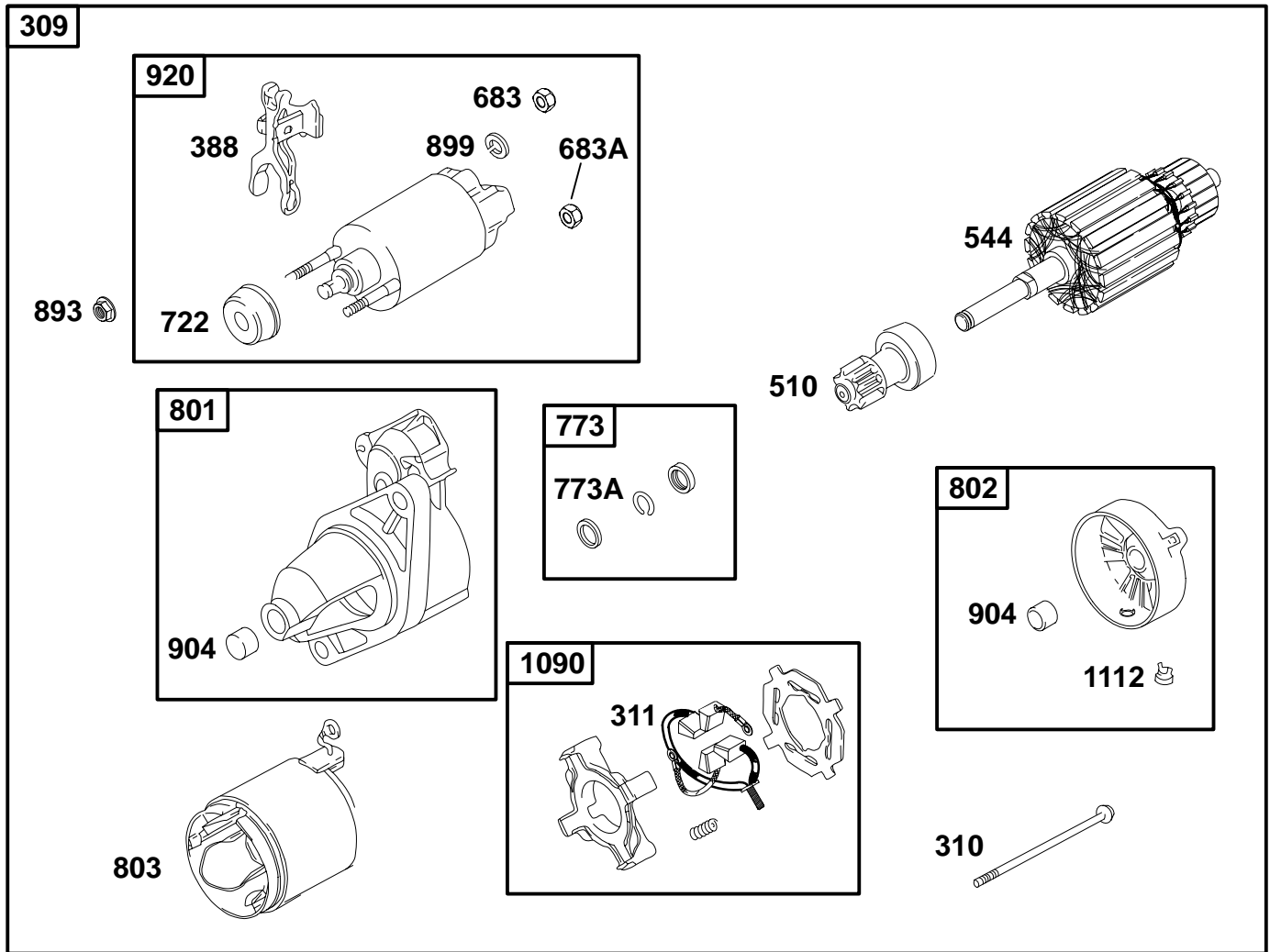
▽ Refer To Repair Manual MS 0750 For Assembly and/or Torque Requirements.

★ Included in Engine Gasket Set-See Ref. 358.

◆ Included in Carburetor Overhaul Kit -See Ref.121.

△ Included in Valve Gasket Set-See Ref.1095.

583400 to 583499



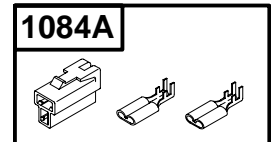
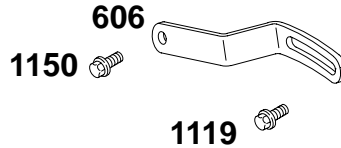
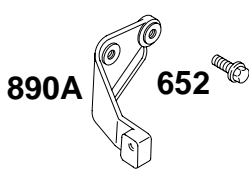
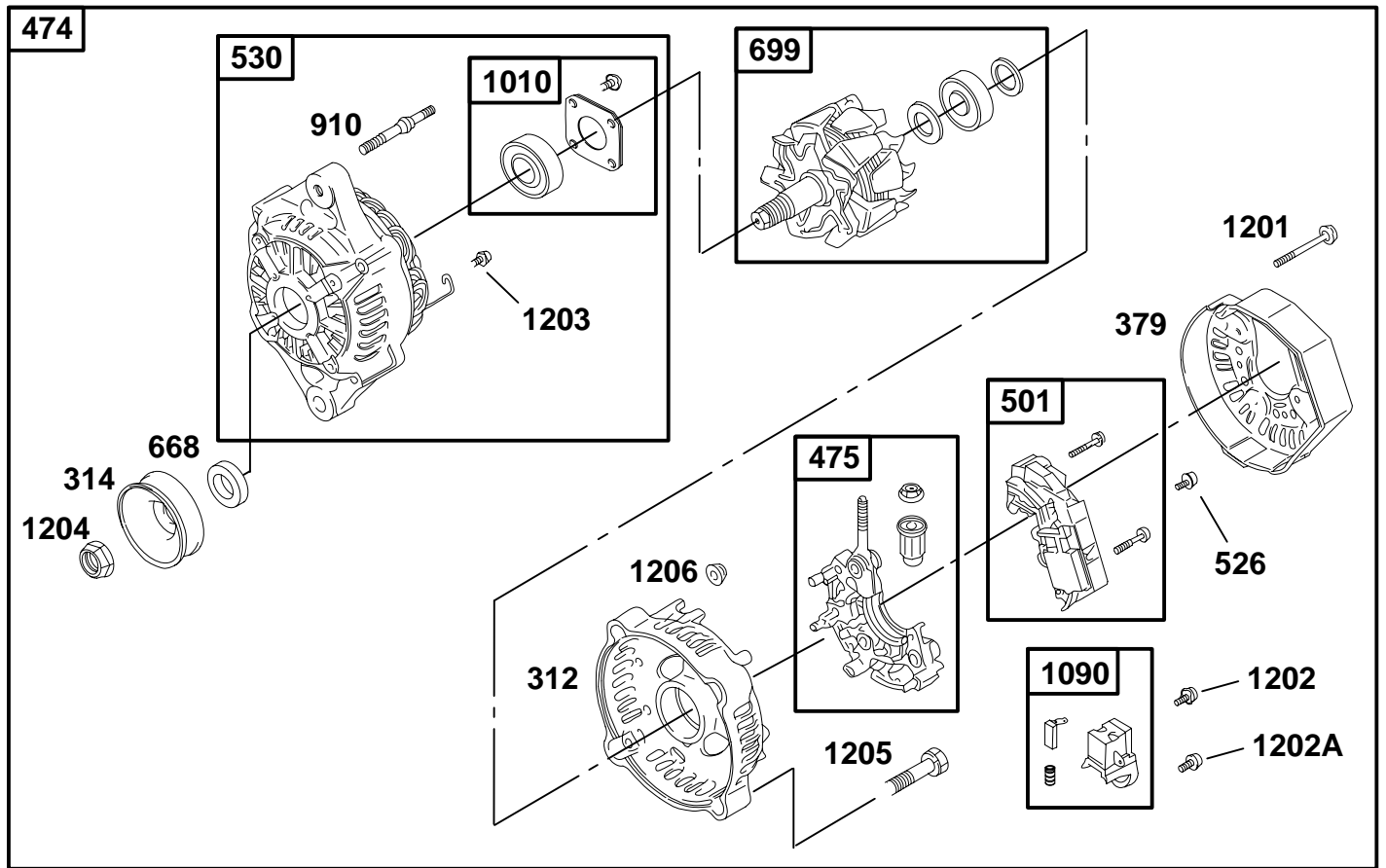
REF. NO.	PART NO.	DESCRIPTION	REF. NO.	PART NO.	DESCRIPTION	REF. NO.	PART NO.	DESCRIPTION
309	825095	Motor-Starter (0.8 KW)	683A	820809	Nut (Starter Solenoid Terminal)	893	820805	Nut (Starter Solenoid)
310	820807	Bolt	722	820801	Seal-Plunger	899	820811	Washer (Starter Solenoid Terminal)
311	825411	Brush Set	773	825420	Retainer	904	820793	Bearing-Needle (Starter Solenoid Terminal)
388	820799	Lever-Pinion Drive	773A	820803	Retainer	920	825418	Solenoid-Starter
510	820789	Drive-Starter	801	820791	Cap-Drive	1090	825412	Retainer-Brush
544	825414	Armature-Starter	802	825416	Cap-End	1112	820797	Plug-Vent
683	820813	Nut (Starter Solenoid Terminal)	803	820783	Housing-Starter			

▽ Refer To Repair Manual MS 0750 For Assembly and/or Torque Requirements.

★ Included in Engine Gasket Set-See Ref. 358.

◆ Included in Carburetor Overhaul Kit -See Ref.121.

△ Included in Valve Gasket Set-See Ref.1095.



REF. NO.	PART NO.	DESCRIPTION	REF. NO.	PART NO.	DESCRIPTION	REF. NO.	PART NO.	DESCRIPTION
312	820692	Housing—Brush End	699	825390	Rotor Assembly	1201	820715	Screw (Brush Cover)
314	820711	Pulley—Alternator	890A	820213	Bracket—Support	1202	820701	Screw (Brush Retainer)
379	820703	Cover—Brush	910	820690	Stud (Alternator)	1202A	820702	Screw (Brush Retainer)
474	825084	Alternator (40 Amp)	1010	825384	Retainer—Bearing	1203	820702	Screw (Stator Wire)
475	825385	Rectifier	1084A	825157	Connector—Terminal	1204	820705	Nut (Alternator Pulley)
501	825388	Regulator	1090	825387	Retainer—Brush	1205	820707	Screw (Brush End Housing)
526	820702	Screw (Rectifier)	1119	820343	Screw (Alternator)	1206	820709	Nut (Brush End Housing)
530	825383	Housing—Drive End	1119A	820270	Screw (Alternator)			
606	820819	Strap—Adjusting	1150	820023	Screw (Adjusting Strap)			
652	820023	Screw (Support Bracket)	1182	820069	Nut (Alternator)			
668	820713	Spacer (Support Bracket)						

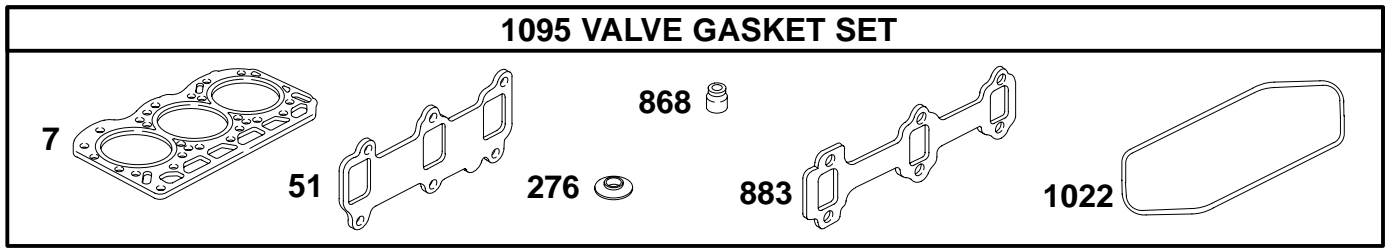
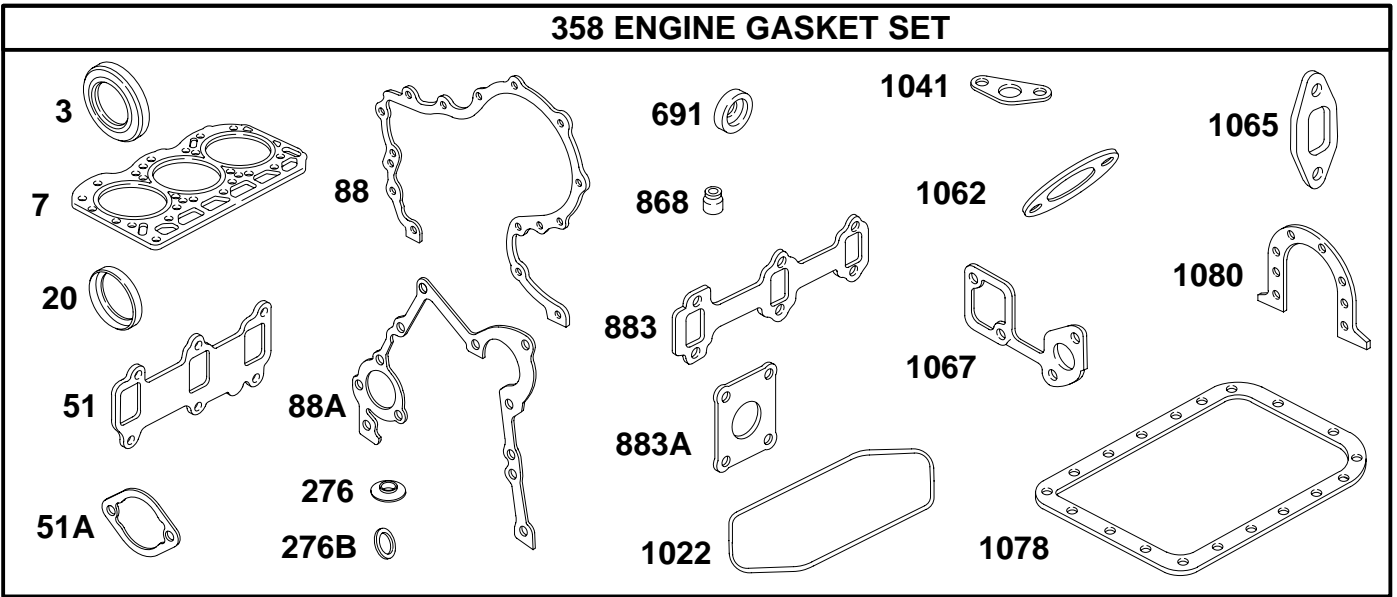
▽ Refer To Repair Manual MS 0750 For Assembly and/or Torque Requirements.

★ Included in Engine Gasket Set—See Ref. 358.

◆ Included in Carburetor Overhaul Kit—See Ref.121.

△ Included in Valve Gasket Set—See Ref.1095.

583400 to 583499



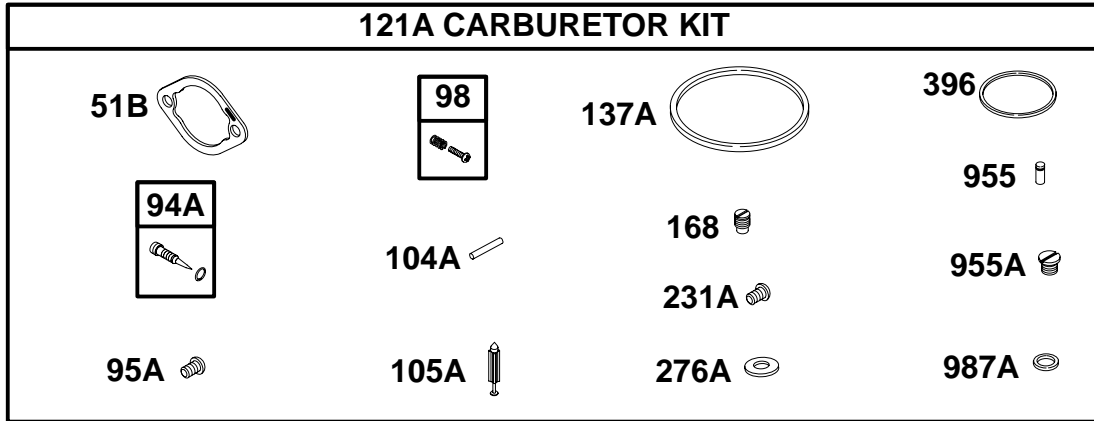
REF. NO.	PART NO.	DESCRIPTION	REF. NO.	PART NO.	DESCRIPTION	REF. NO.	PART NO.	DESCRIPTION
3	★820055	Seal—Oil (Magneto Side)	276	★820064	Washer—Sealing (Rocker Cover)	1022	★820150	Gasket—Rocker Cover
7	★△820648	Gasket—Cylinder Head	276B	★820582	Washer—Sealing (Requires 2 For Dual Drain Oil Pans)	1041	★820104	Gasket—Oil Pump Screen
20	★820056	Seal—Oil (PTO Side)	358	825378	Gasket Set—Engine	1062	★820093	Gasket—Outlet Housing
51	★△820087	Gasket—Intake	691	★820054	Seal—Governor Shaft	1065	★820098	Gasket—Inlet Housing
51A	★◆820385	Gasket—Intake	868	★820041	Seal—Valve	1067	★820100	Gasket—Water Pump
88	★820148	Gasket—Gear Reduction Cover	883	★△820817	Gasket—Exhaust	1078	★820137	Gasket—Oil Pan
88A	★820155	Gasket—Gear Reduction Cover	883A	★820670	Gasket—Exhaust	1080	★820145	Gasket—Seal Retainer
						1095	825379	Gasket Set—Valve

▽ Refer To Repair Manual MS 0750 For Assembly and/or Torque Requirements.

★ Included in Engine Gasket Set—See Ref. 358.

◆ Included in Carburetor Overhaul Kit—See Ref.121.

△ Included in Valve Gasket Set—See Ref.1095.



REF. NO.	PART NO.	DESCRIPTION	REF. NO.	PART NO.	DESCRIPTION	REF. NO.	PART NO.	DESCRIPTION
51B	★◆820385	Gasket-Intake	121A	◆825258	Kit-Carburetor Overhaul (Autochoke)	276A	★◆820511	Washer-Sealing
94A	★◆825249	Kit-Idle Mixture	137A	★◆820489	Gasket-Float Bowl	396	820515	Gasket-Choke Cover
95A	★◆820504	Screw (Throttle Valve)	168	820507	Jet-Idle Circuit	955	820510	Plug-Carburetor
98	★◆825242	Kit-Idle Speed	231A	820485	Screw (Choke Valve)	955A	820520	Plug-Carburetor
104A	★◆820505	Pin-Float Hinge				987A	★◆	Seal-Throttle Shaft (Sold In Kit Only)
105A	★◆820506	Valve-Float Needle						

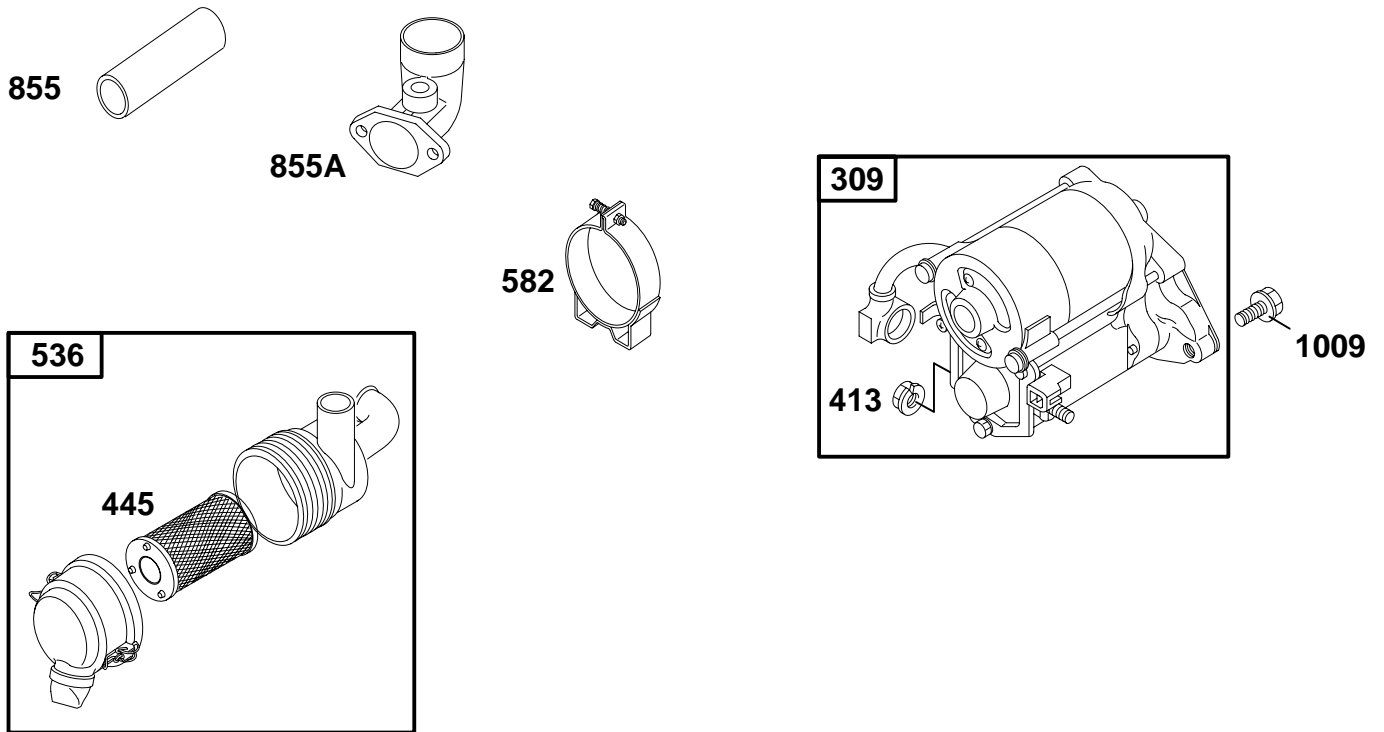
▽ Refer To Repair Manual MS 0750 For Assembly and/or Torque Requirements.

★ Included in Engine Gasket Set-See Ref. 358.

◆ Included in Carburetor Overhaul Kit -See Ref.121.

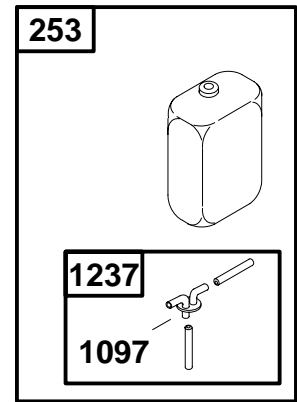
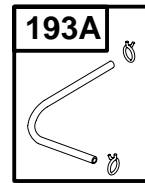
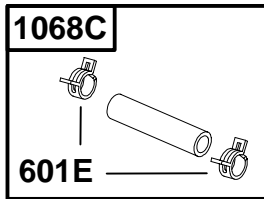
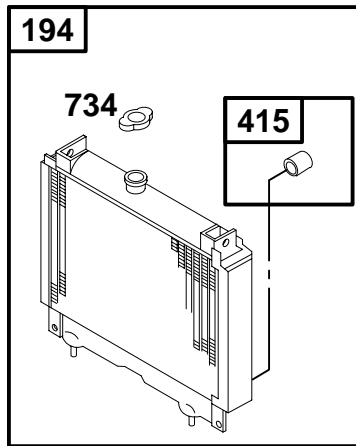
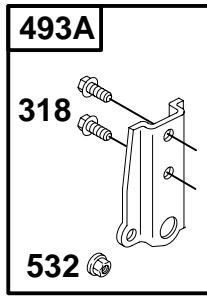
△ Included in Valve Gasket Set-See Ref.1095.

580400 to 580499 GAS ENGINE OPTIONS



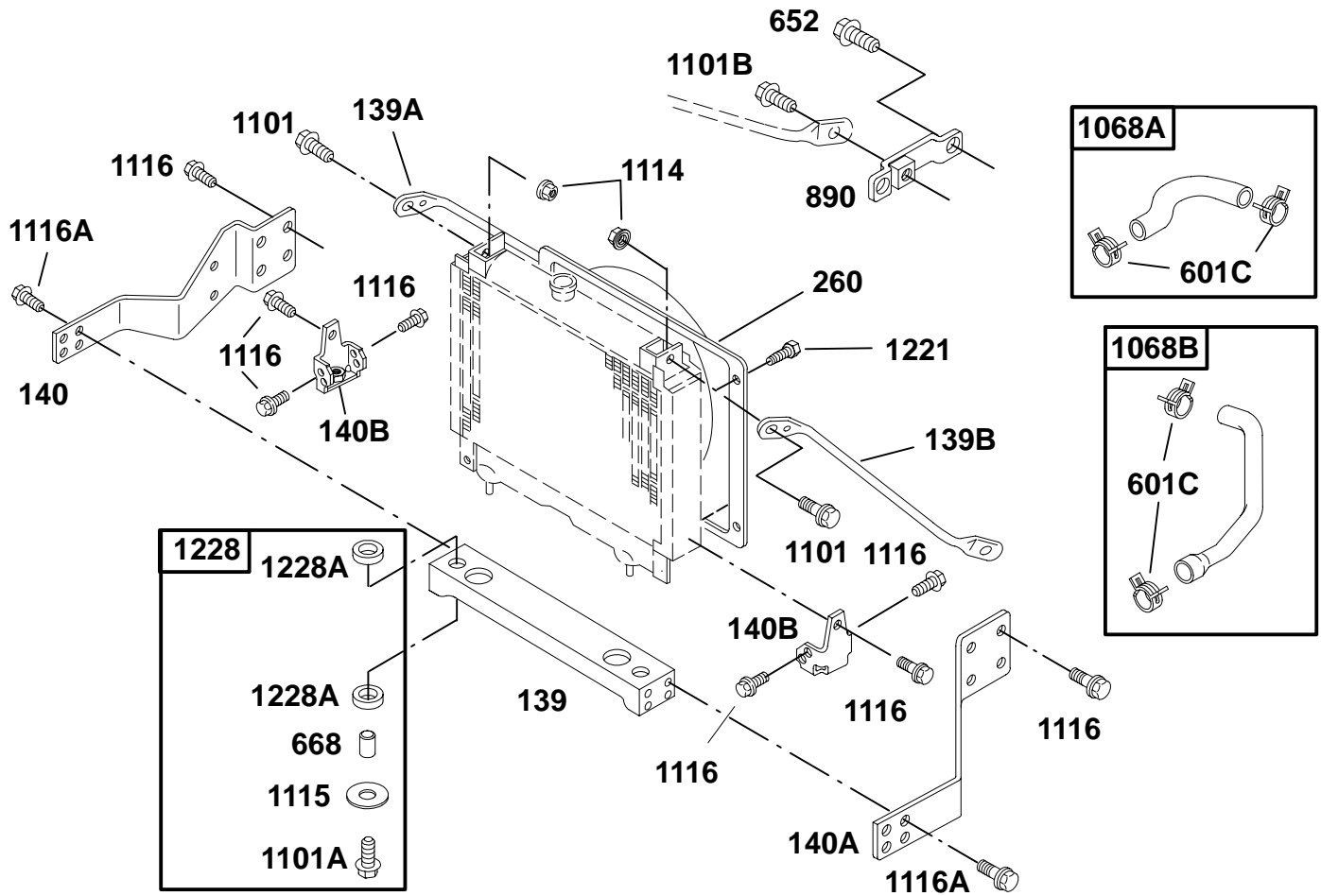
REF. NO.	PART NO.	DESCRIPTION	REF. NO.	PART NO.	DESCRIPTION	REF. NO.	PART NO.	DESCRIPTION
309	▽ 825083	Motor-Starter (1.0 KW)	536	825118	Cleaner-Air (90 Degree Elbow With Vacuum Adaptor)	1009	820019	Screw (Starter Motor)
413	820067	Nut (Starter Motor)	582	820230	Clamp-Air Cleaner	———— Note ————		
445	820263	Filter-Air Cleaner Cartridge	855	820555	Adaptor-Air Cleaner (Straight)	820451	820451	Screw (Starter Motor) (Used To Mount Starter To SAE Housings)
			855A	820882	Adaptor-Air Cleaner	820265	820265	Screw (Starter Motor) (Used To Mount Starter to General Housings)

583400 to 583499 GAS ENGINE OPTIONS



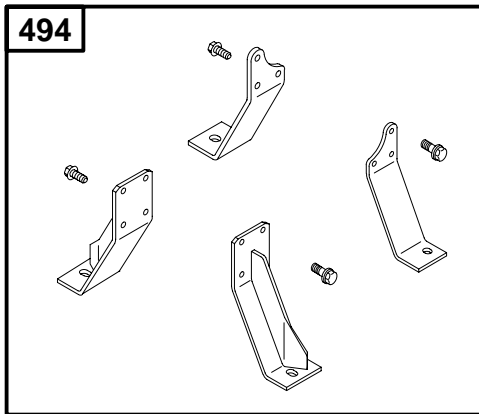
REF. NO.	PART NO.	DESCRIPTION	REF. NO.	PART NO.	DESCRIPTION	REF. NO.	PART NO.	DESCRIPTION
193A	825296	Hose-Reserve Tank	415	820052	Plug	734	820258	Cap-Radiator
194	825068	Radiator	493A	825106	Bracket-Mounting	1068C	825073	Hose/Clamp Assembly
253	825428	Tank-Reserve	532	820303	Nut (Mounting Bracket)	1097	820287	Cap-Surge Tank
318	820034	Screw (Mounting Bracket)	601E	820201	Clamp-Hose	1237	825461	Cap/Hose-Reserve

580400 to 580499 GAS ENGINE OPTIONS

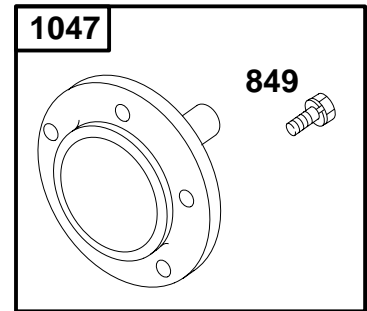
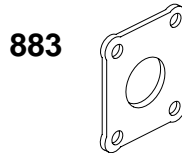


REF. NO.	PART NO.	DESCRIPTION	REF. NO.	PART NO.	DESCRIPTION	REF. NO.	PART NO.	DESCRIPTION
139	820255	Support-Radiator (Front)	890	820194	Bracket-Support (Radiator)	1116	820024	Screw (Radiator Bracket) (Used With Engine Mounts Only)
139A	820190	Support-Radiator (Right Hand)	1068A	825134	Hose/Clamp Assembly (Outlet)	Note		
139B	820191	Support-Radiator (Left Hand)	1068B	825133	Hose/Clamp Assembly (Inlet)	820023	Screw (Radiator Bracket) (Used With Engine Mounts And Radiator Brackets)	
140	820192	Bracket-Radiator (Right Hand)	1101	820272	Screw (Radiator Mount)	1116A	820174	Screw (Radiator Bracket)
140A	820193	Bracket-Radiator (Left Hand)	1101A	820309	Screw (Radiator Support)	1221	820636	Screw (Fan Shroud)
140B	820294	Bracket-Radiator	1101B	820273	Screw (Radiator Support)	1228	825135	Mount-Radiator
260	820220	Shroud-Fan	1114	820070	Nut (Radiator Support)	1228A	820198	Mount-Radiator
601C	820256	Clamp-Hose	1115	820296	Washer (Radiator Mount)			
652	820452	Screw (Support Bracket)						
668	820307	Spacer (Fan Shroud)						

583400 to 583499 GAS ENGINE OPTIONS



GENERAL MOUNTING KIT



REF. NO.	PART NO.	DESCRIPTION	REF. NO.	PART NO.	DESCRIPTION	REF. NO.	PART NO.	DESCRIPTION
494	825214	Mount-Engine (General Mounting Kit)	849	820212	Screw (Stub Shaft)	883	820670	Gasket-Exhaust
						1047	▽ 825466	Shaft-Stub