

# **Illustrated Parts List**

## **Model Series**

### **587400 to 587499**

### **GAS**

TYPE NUMBERS  
0105, 0205.

#### **TO FIND**

#### **THE CORRECT NUMBER OF THE PART YOU NEED:**

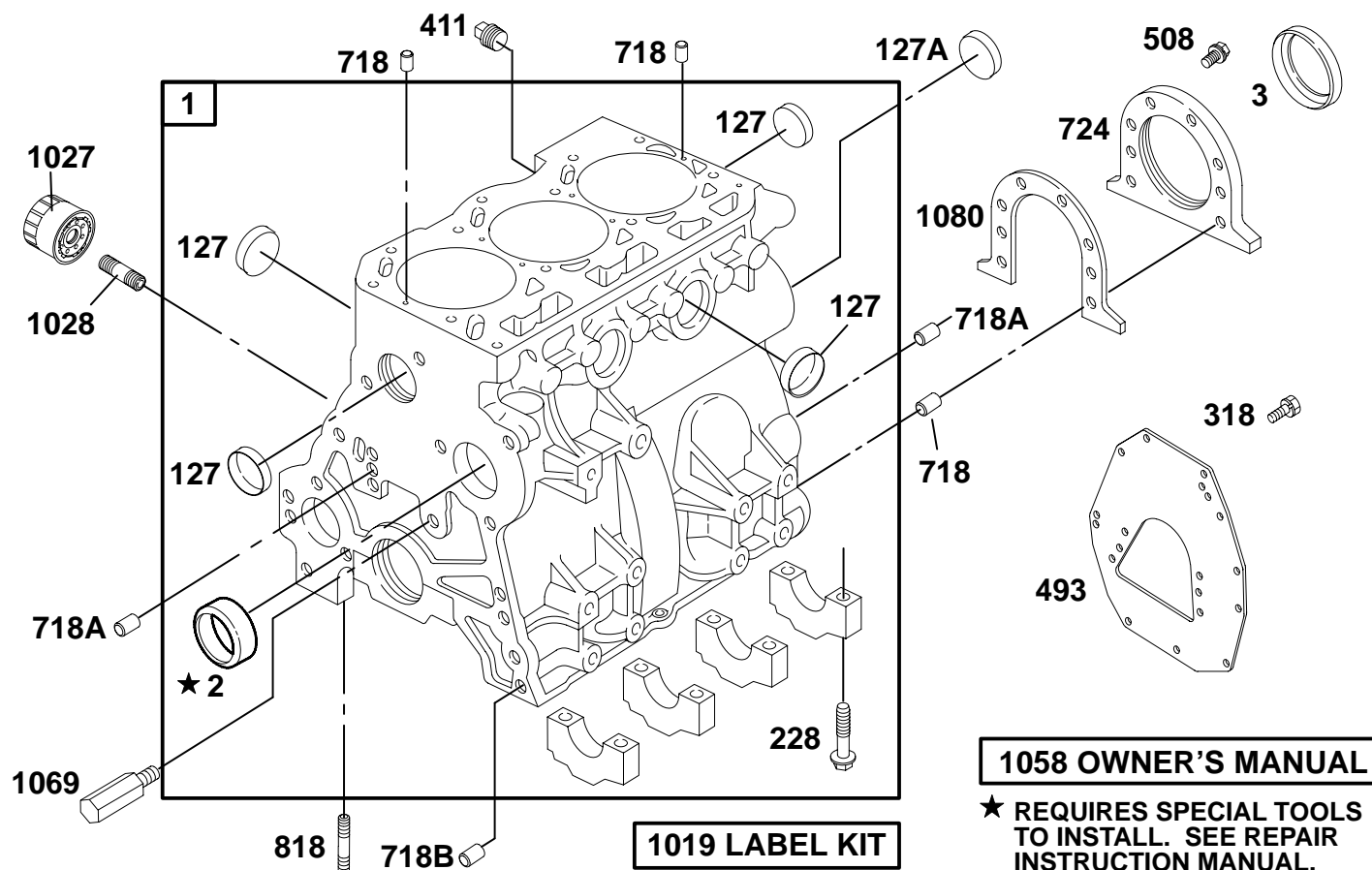
#### **FOLLOW THE INSTRUCTIONS BELOW**

- A. Refer to Model, Type and Code Number that is located on the engine. Engine type numbers such as 0123 01 are listed only as 0123 in most instances. The two digits (01 or 02, etc.) to the right of the space may be required for more accurate parts identification in some instances. Select the Illustrated Parts List covering the correct Model Series and Type Number.
- B. Refer to the Illustrations and compare the original part with Illustration. The number next to the illustration is the Reference Number. Assemblies include all parts shown in frames. All parts shown in assembly frames having individual reference numbers can be purchased separately.
- C. After the Reference Number has been identified, refer to the Numerical text, where Reference and Primary Part Number are listed. **THE PRIMARY PART IS USED ON ALL TYPE NUMBERS EXCEPT THOSE TYPE NUMBERS UNDER "NOTE."**
- D. If a "Note" appears below the Primary Part Number, it means that this part differs from the Primary Part for certain types. If your Type number is listed under "Note," order the part referred to at the "Note."
- E. If your Engine Type Number does not appear after any part number listed under "Note," use the Primary Part Number.
- F. For Engine Type Numbers not covered by this book, check other Parts Lists having the same engine model or contact your source of supply.

PRINTED IN U.S.A.



COPYRIGHT by BRIGGS & STRATTON DAIHATSU LLC  
All rights reserved. No part of this material may be reproduced or transmitted, in any form or by any means, electronic or mechanical, including photocopying, recording or by any information storage and retrieval system, without permission in writing from Briggs & Stratton DAIHATSU LLC.



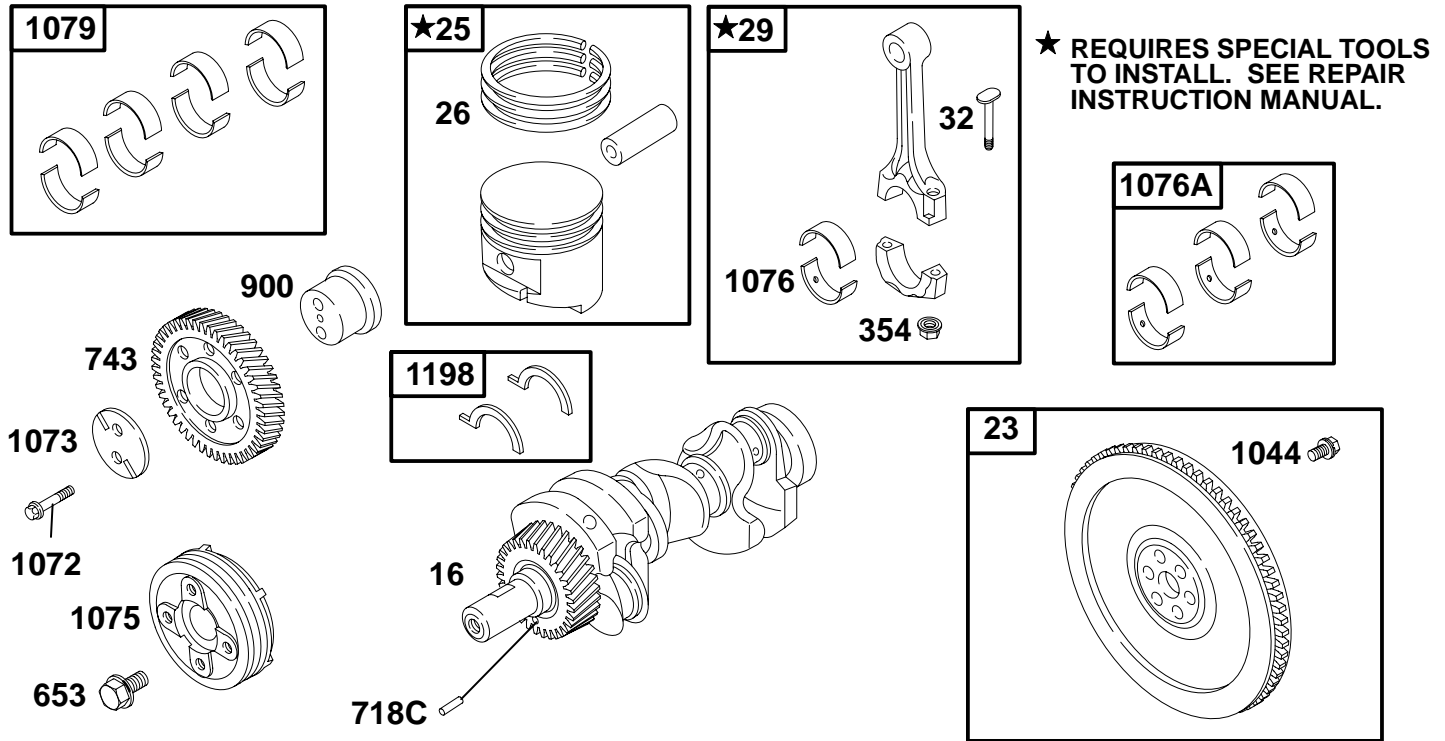
REF. NO.	PART NO.	DESCRIPTION	REF. NO.	PART NO.	DESCRIPTION	REF. NO.	PART NO.	DESCRIPTION
1	▽825335	Cylinder Assembly Used on Type No(s). 0205.  <b>Note</b> 825335 Cylinder Assembly (Used After Code Date 98123100 and Before Code Date 99070100). Used on Type No(s). 0105. 825026 Cylinder Assembly (Used Before Code Date 99010100).	2	▽ 820129	Bushing	718B	820061	Locating Pin
			3	★820056	Oil Seal	724	▽ 820146	Seal Retainer
			127	820004	Welch Plug	818	820016	Stud (Oil Filter Screen)
			127A	▽ 820151	Welch Plug (Camshaft)	1019	825228	Label Kit (Identification Labels)
			228	820042	Screw (Bearing Support)	1027	491056	Oil Filter
			318	820176	Screw (Mounting Bracket)			<b>Note</b> 820314 Oil Filter (Optional)
			411	▽ 820051	Plug	1028	820050	Oil Filter Adapter
			493	▽ 820170	Mounting Bracket	1058	820824	Owner's Manual
			508	820031	Screw (Seal Retainer)	1069	▽ 820102	Oil Nozzle
			718	820063	Locating Pin	1080	★820145	Seal Retainer Gasket
			718A	820062	Locating Pin			

▽ Refer To Repair Manual MS 0750 For Assembly and/or Torque Requirements.

★ Included in Gasket Set—See Ref. No. 358

◆ Included in Carburetor Overhaul Kit – See Ref. 121

△ Included in Valve Overhaul Gasket Set—See Ref. No. 1033



REF. NO.	PART NO.	DESCRIPTION	REF. NO.	PART NO.	DESCRIPTION	REF. NO.	PART NO.	DESCRIPTION
16	▽ 825318	Crankshaft (Used After Code Date 99063000). Used on Type No(s). 0205. <b>Note</b> 825318 Crankshaft (Used After Code Date 98123100 and Before Code Date 99070100). Used on Type No(s). 0105. 825193 Crankshaft (Used Before Code Date 99010100).	32	▽ 820128	Screw (Connecting Rod)	1072	820081	Screw (Idler Gear Plate)
23	▽ 825303	Flywheel	354	820073	Nut (Connecting Rod)	1073	820117	Idler Gear Plate
25	▽ 825203	Piston (Standard) <b>Note</b> 825204 Piston Assy. (.010 O.S.)	653	820079	Screw (Crankshaft Pulley)	1075	820236	Crankshaft Pulley
26	▽ 825036	Ring Set <b>Note</b> 825034 Ring Set (.010 O.S.)	718C	820059	Locating Pin	1076	▽ 820142	Rod Bearing
29	▽ 825033	Connecting Rod	743	▽ 820611	Drive Gear (Used After Code Date 99063000). Used on Type No(s). 0205. <b>Note</b> 820611 Drive Gear (Used After Code Date 98123100 and Before Code Date 99070100). Used on Type No(s). 0105. 825013 Drive Gear (Used Before Code Date 99010100).	1076A	▽ 825019	Rod Bearing Set (Standard) (Includes 3 Bearings) <b>Note</b> ▽ 825060 Rod Bearing Set (.010 Undersize) (Includes 3 Bearings)
			900	▽ 820116	Gear Shaft	1079	▽ 825040	Main Bearing Set (Standard) <b>Note</b> ▽ 825039 Main Bearing Set (.010 Undersize)
			1044	820080	Screw (Flywheel)	1198	▽ 820140	Thrust Washer (Crankshaft, Standard) <b>Note</b> ▽ 820139 Thrust Washer (Crankshaft, .005 Oversize)

▽ Refer To Repair Manual MS 0750 For Assembly and/or Torque Requirements.

★ Included in Gasket Set—See Ref. No. 358

6354-3

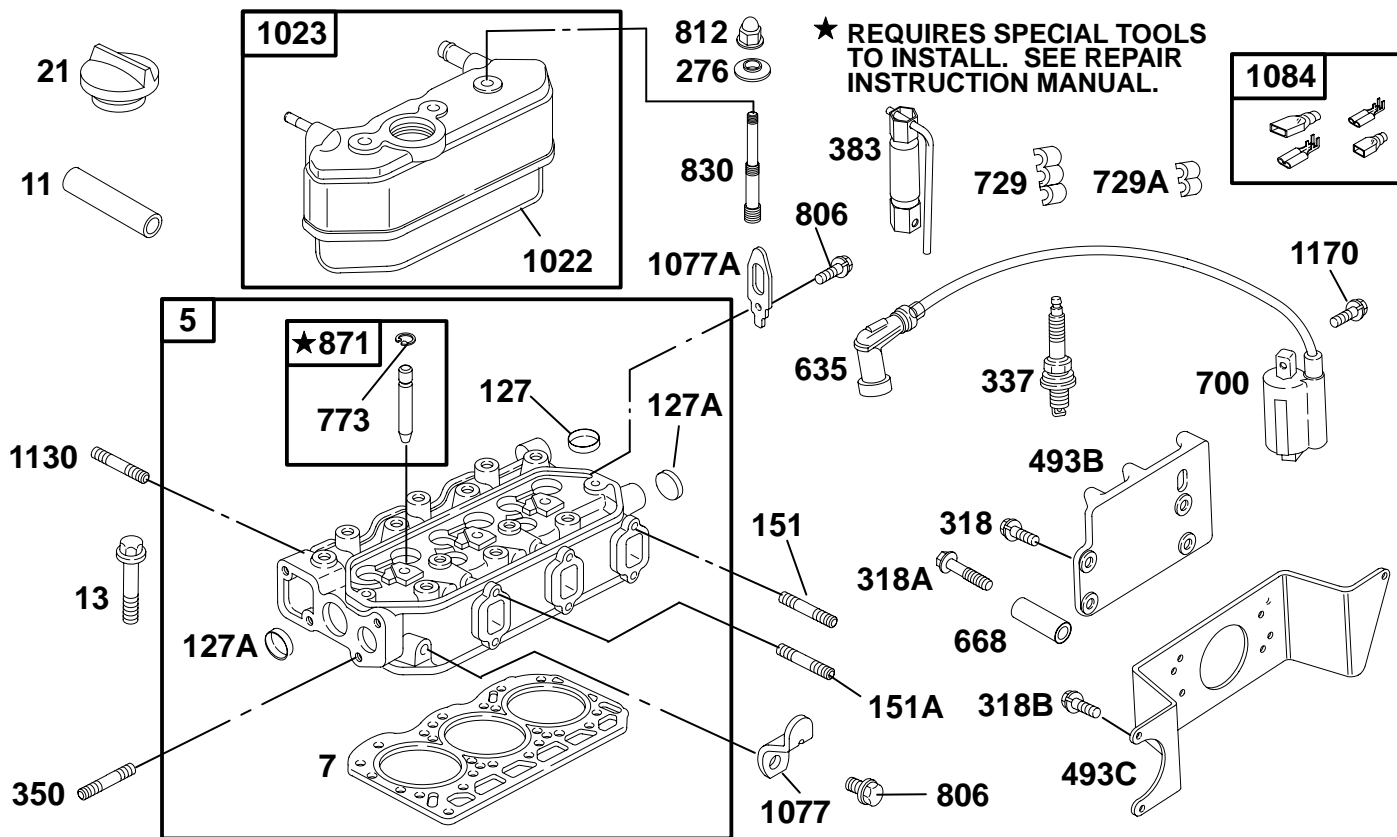
Assemblies include all parts shown in frames.

◆ Included in Carburetor Overhaul Kit – See Ref. 121

△ Included in Valve Overhaul Gasket Set—See Ref. No. 1033

129

## 587400 to 587499



REF. NO.	PART NO.	DESCRIPTION	REF. NO.	PART NO.	DESCRIPTION	REF. NO.	PART NO.	DESCRIPTION
5	▽ 825376	Cylinder Head (Used After Code Date 98123100).			————— <b>Note</b> ————— <b>820623</b> Screw (Cylinder Head) (Used After Code Date 98123100 and Before Code Date 99070100). Used on Type No(s). 0105.	350	820078	Stud (Water Pump)
		————— <b>Note</b> ————— <b>825048</b> Cylinder Head (Used Before Code Date 99010100).			<b>820074</b> Screw (Cylinder Head) (Used Before Code Date 99010100).	383	89838	Spark Plug Wrench
7★△▽	820648	Cylinder Head Gasket (Used After Code Date 98123100).				493B	820083	Mounting Bracket
		————— <b>Note</b> ————— ★△▽ <b>820152</b> Cylinder Head Gasket (Used Before Code Date 99010100).	21	825024	Oil Fill Cap	493C	820480	Mounting Bracket
11	820048	Breather Tube (Cylinder Head)	127	820004	Welch Plug	635	▽ 820084	Spark Plug Boot
13	820623	Screw (Cylinder Head) (Used After Code Date 99063000). Used on Type No(s). 0205.	127A	820005	Welch Plug	668	820675	Spacer
			151	820014	Stud (Exhaust Manifold)	700	820037	Ignition Coil
			151A	820466	Stud (Exhaust Manifold)	729	820672	Wire Clip
			276	★△ 820064	Sealing Washer	729A	820046	Wire Clip
			318	820024	Screw (Mounting Bracket)	773	820130	Retainer
			318A	820676	Screw (Mounting Bracket)	806	820212	Screw (Lifting Bracket)
			318B	820273	Screw (Mounting Bracket)	812	820071	Nut (Rocker Cover)
			337	491055	Spark Plug	830	820076	Stud (Rocker Cover)
						871	▽ 825030	Guide Bushing
						1022	★△ 820150	Rocker Cover Gasket
						1023	825277	Rocker Arm Cover
						1077	820260	Lifting Bracket
						1077A	820254	Lifting Bracket
						1084	825155	Terminal Connector
						1130	820015	Stud (Intake Manifold)
						1170	820012	Screw (Ignition Coil)

▽ Refer To Repair Manual MS 0750 For Assembly and/or Torque Requirements.

★ Included in Gasket Set—See Ref. No. 358

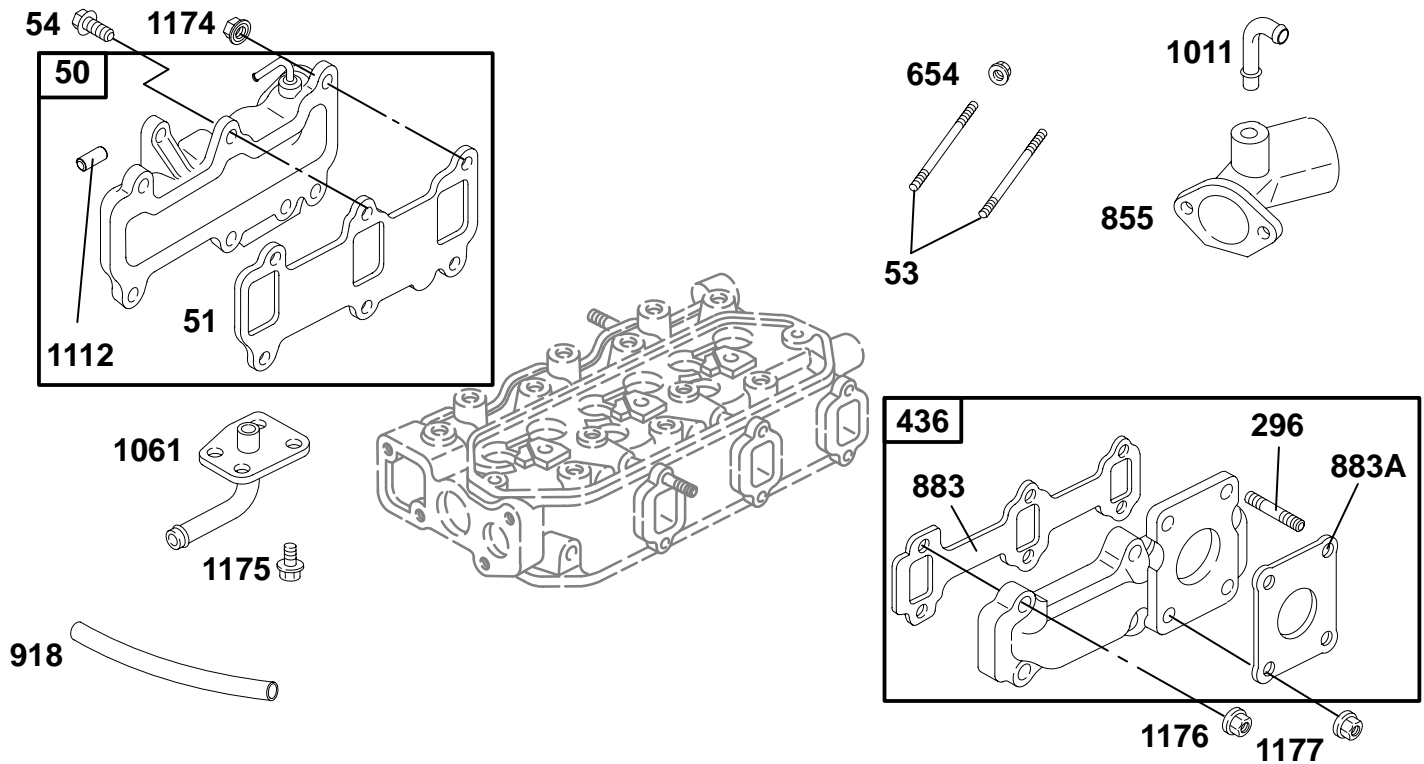
6354-4

◆ Included in Carburetor OverhaulKit – See Ref. 121

Δ Included in Valve Overhaul Gasket Set—See Ref. No. 1033

**Assemblies include all parts shown in frames.**

129



REF. NO.	PART NO.	DESCRIPTION	REF. NO.	PART NO.	DESCRIPTION	REF. NO.	PART NO.	DESCRIPTION
50	▽ 825261	Intake Manifold (Used After Code Date 97022700). <b>Note</b> 825053 Intake Manifold (Used Before Code Date 97022800).	654	820011	Nut (Carburetor Mounting)	918	820393	Vacuum Hose
51	820087	Manifold Gasket	855	820578	Air Cleaner Adapter	1011	820184	Vent Tube
53	820077	Stud (Carburetor Mounting)	883	★Δ820817	Exhaust Gasket (Used After Code Date 99080100). <b>Note</b> ★Δ▽820088 Exhaust Gasket (Used Before Code Date 99080200).	1061	▽ 820090	Outlet Cover
54	820034	Screw (Intake Manifold)	883A	★820670	Exhaust Gasket (Muffler) (Used After Code Date 98123100). <b>Note</b> ★Δ▽820085 Exhaust Gasket (Used Before Code Date 99010100).	1112	820543	Vent Plug (Used After Code Date 97022800).
296	820553	Stud (Muffler Mounting)				1174	820069	Nut (Intake Manifold)
436	▽ 825055	Exhaust Manifold				1175	820031	Screw (Outlet Cover)
						1176	820010	Nut (Exhaust Manifold)
						1177	820178	Nut (Muffler)

▽ Refer To Repair Manual MS 0750 For Assembly and/or Torque Requirements.

★ Included in Gasket Set—See Ref. No. 358

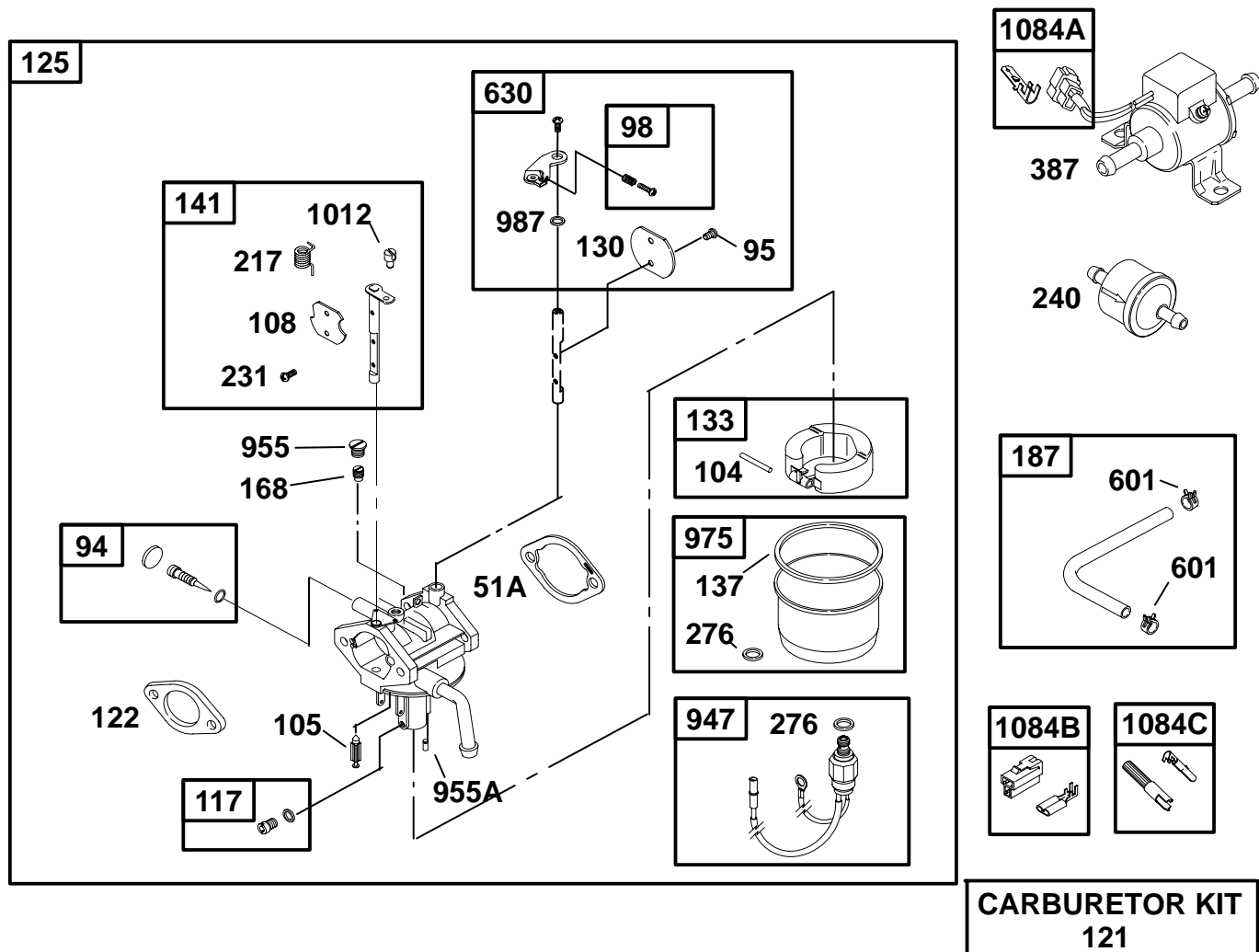
6354-5

◆ Included in Carburetor Overhaul Kit – See Ref. 121

Δ Included in Valve Overhaul Gasket Set—See Ref. No. 1033

Assemblies include all parts shown in frames.

129



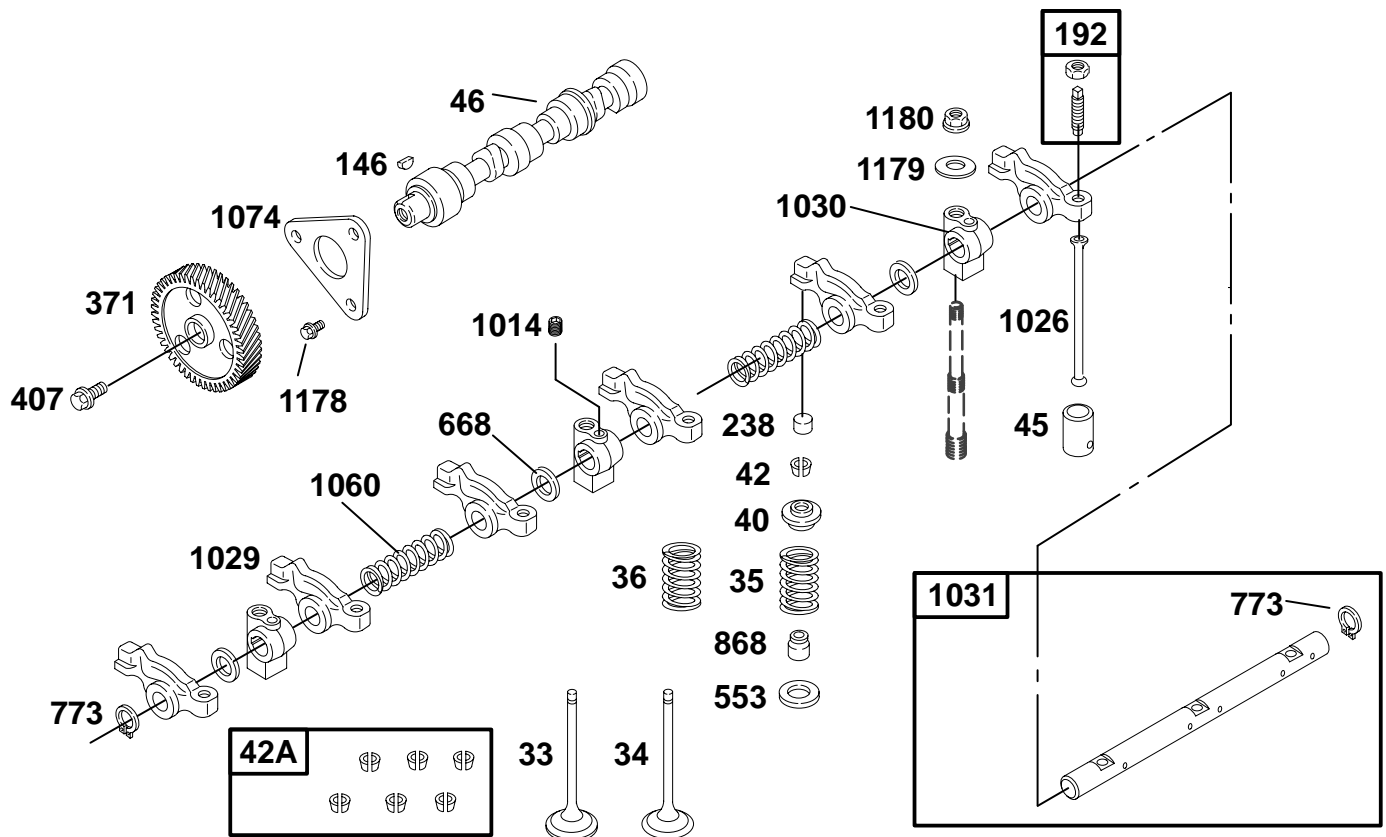
REF. NO.	PART NO.	DESCRIPTION	REF. NO.	PART NO.	DESCRIPTION	REF. NO.	PART NO.	DESCRIPTION
51A	★◆820385	Intake Gasket	130	◆	Throttle Valve (Sold In Kit Only)	630	825440	Throttle Lever/Plate Kit (Note: To Replace Throttle Shaft, Order Ref. 125)
94	◆825374	Idle Mixture Kit	133	825248	Carburetor Float	947	825255	Fuel Solenoid
95	◆	Screw (Throttle Valve— Sold In Kit Only)	137	◆820508	Float Bowl Gasket	955	◆820510	Carburetor Plug
98	◆825250	Idle Speed Kit	141	825375	Choke Shaft Kit	955A	◆820520	Carburetor Plug
104	◆693506	Float Hinge Pin	168	◆820603	Idle Circuit Jet	975	825247	Float Bowl
105	◆820506	Needle Valve	187	825044	Fuel Line	987	◆	Throttle Shaft Seal (Sold In Kit Only)
108	◆	Choke Valve (Sold In Kit Only)	217	◆	Choke Return Spring (Sold In Kit Only)	1012	◆	Link Retainer (Sold In Kit Only)
117	◆825439	Main Jet (Standard)	231	◆	Screw (Choke Valve— Sold In Kit Only)	1084A	825156	Terminal Connector (Fuel Pump—Female)
121	825441	Carburetor Kit	240	498688	Fuel Filter	1084B	825157	Terminal Connector (Fuel Pump—Male)
122	◆820082	Spacer	276	◆820511	Sealing Washer	1084C	825158	Terminal Connector (Solenoid)
125	825373	Carburetor (Manual Choke, Electronic Governor)	387	825232	Fuel Pump			
			601	820006	Hose Clamp			

▽ Refer To Repair Manual MS 0750 For Assembly and/or Torque Requirements.

★ Included in Gasket Set—See Ref. No. 358

◆ Included in Carburetor Overhaul Kit – See Ref. 121

△ Included in Valve Overhaul Gasket Set—See Ref. No. 1033



REF. NO.	PART NO.	DESCRIPTION	REF. NO.	PART NO.	DESCRIPTION	REF. NO.	PART NO.	DESCRIPTION
33	820114	Exhaust Valve	371	820613	Cam Gear (Used After Code Date 99063000). Used on Type No(s). 0205.	668	▽ 820065	Rocker Shaft Spacer
34	820115	Intake Valve				773	820003	Retainer
35	820043	Valve Spring (Intake)				868	820041	Valve Seal
36	820043	Valve Spring (Exhaust)				1014	820105	Screw (Rocker Arm Support)
40	820111	Valve Retainer				1026	820422	Push Rod
42	825042	Valve Keeper (Contains 1 Set of 6 Required)				1029	▽ 820387	Rocker Arm
42A	825082	Valve Keeper (Contains 6 Sets)				1030	▽ 820106	Rocker Arm Support
45	820110	Valve Tappet				1031	▽ 825093	Rocker Arm Shaft
46	820388	Cam Shaft				1060	▽ 820044	Rocker Shaft Spring
146	94196	Timing Key				1074	820118	Camshaft Retainer
192	825041	Rocker Arm Adjuster				1178	820032	Screw (Rocker Arm Support)
238	820113	Valve Cap	407	820075	Screw (Cam Gear)	1179	820177	Washer (Rocker Arm Support)
			553	820112	Valve Spring Retainer	1180	820070	Nut (Rocker Arm Support)

▽ Refer To Repair Manual MS 0750 For Assembly and/or Torque Requirements.

★ Included in Gasket Set—See Ref. No. 358

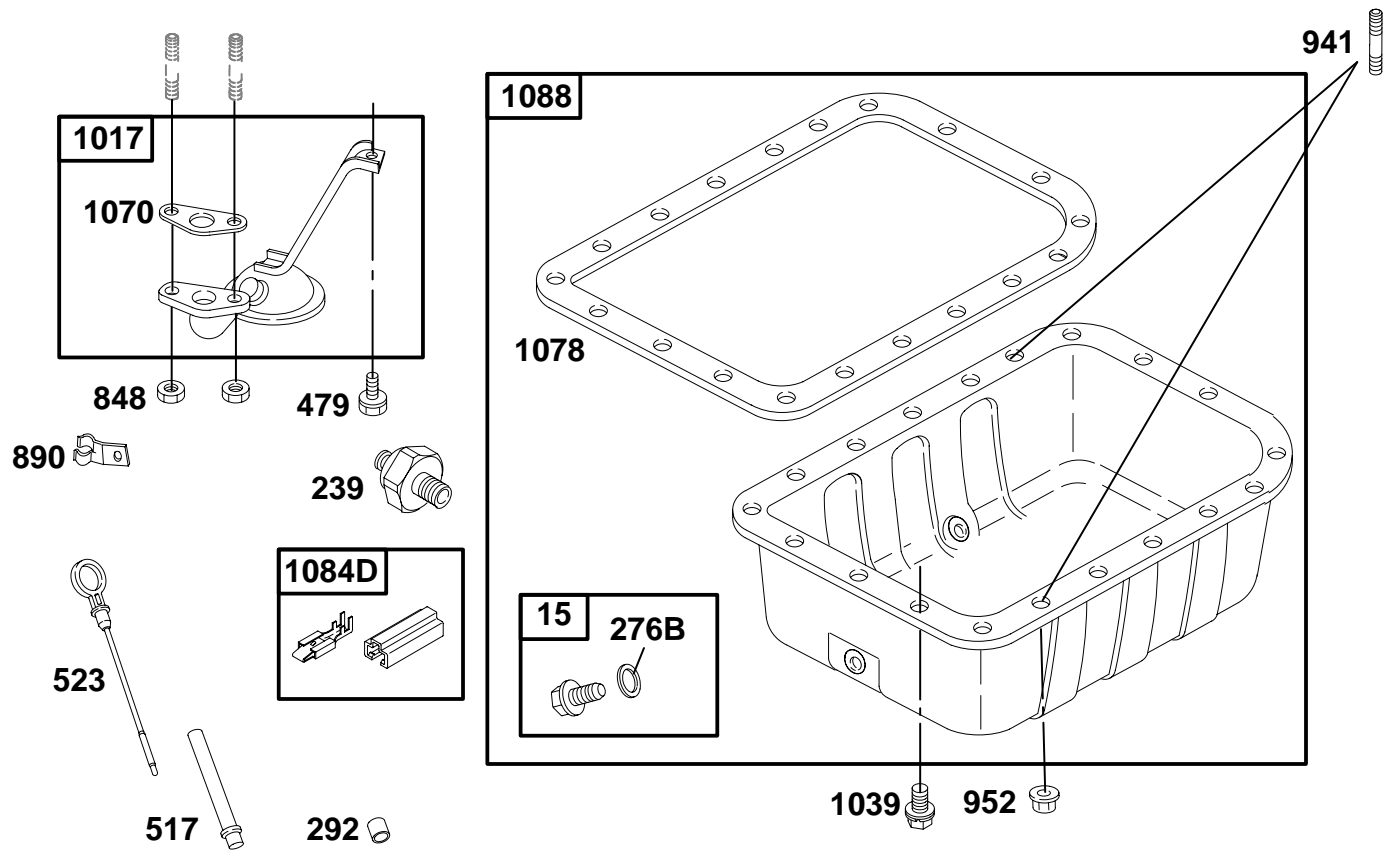
6354-7

Assemblies include all parts shown in frames.

◆ Included in Carburetor Overhaul Kit – See Ref. 121

△ Included in Valve Overhaul Gasket Set—See Ref. No. 1033

129



REF. NO.	PART NO.	DESCRIPTION	REF. NO.	PART NO.	DESCRIPTION	REF. NO.	PART NO.	DESCRIPTION
<b>15</b>	<b>825278</b>	Oil Drain Plug (16 mm Dia. Plug, Requires 2 For Dual Drain Oil Pans) ————— <b>Note</b> ————— <b>825043</b> Oil Drain Plug (12 mm Dia. Plug, Requires 2 For Dual Drain Oil Pans)	<b>292</b>	▽ <b>820662</b>	Dipstick Tube Collar	<b>1070</b>	<b>★820104</b>	Oil Strainer Gasket
<b>239</b>	<b>825000</b>	Oil Pressure Switch	<b>479</b>	<b>820034</b>	Screw (Oil Pump Screen)	<b>1078</b>	<b>★820137</b>	Oil Pan Gasket
<b>276B</b>	<b>★820582</b>	Sealing Washer (16 mm Dia. Plug, Requires 2 For Dual Drain Oil Pans) ————— <b>Note</b> ————— <b>★820049</b> Sealing Washer (12 mm Dia. Plug, Requires 2 For Dual Drain Oil Pans)	<b>517</b>	<b>820144</b>	Dipstick Tube	<b>1084D</b>	<b>825154</b>	Connector (Oil Pressure Switch)
			<b>523</b>	<b>820103</b>	Dipstick	<b>1088</b>	▽ <b>825285</b>	Oil Pan (Dual Drain, 16 mm Diameter Plugs) (Used After Code Date 98060100).
			<b>848</b>	<b>820069</b>	Nut (Oil Pump Screen)			————— <b>Note</b> ————— <b>825234</b> Oil Pan (Dual Drain, 12 mm Diameter Plugs) (Used Before Code Date 98053000 and After Code Date 96123100).
			<b>890</b>	<b>820238</b>	Support Bracket			
			<b>941</b>	<b>820017</b>	Stud (Oil Pan)			
			<b>952</b>	<b>820068</b>	Nut (Oil Pan)			
			<b>1017</b>	▽ <b>825089</b>	Oil Pump Screen			
			<b>1039</b>	<b>820034</b>	Screw (Oil Pan)			

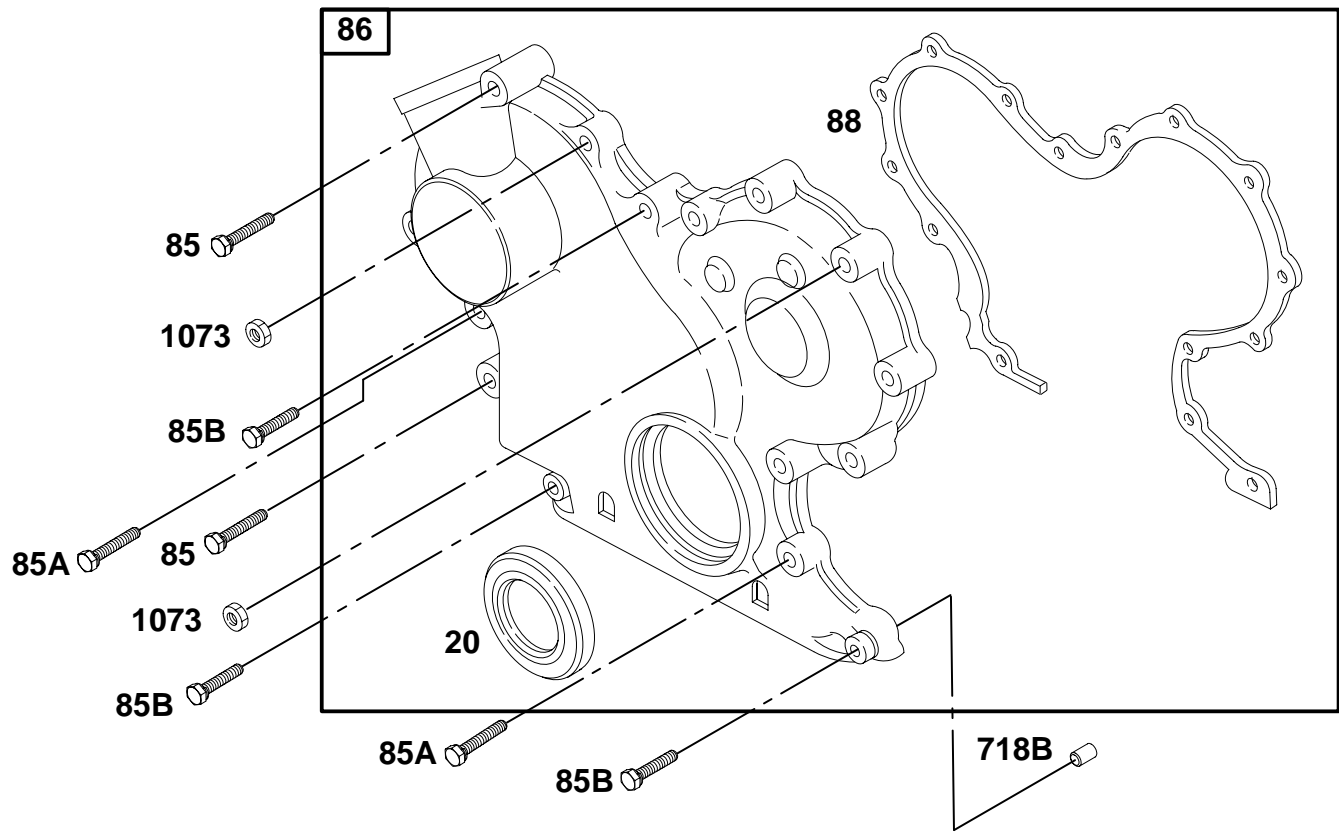
◆ Included in Carburetor OverhaulKit – See Ref. 121

Δ Included in Valve Overhaul Gasket Set—See Ref. No. 1033

**Assemblies include all parts shown in frames.**

129





REF. NO.	PART NO.	DESCRIPTION	REF. NO.	PART NO.	DESCRIPTION	REF. NO.	PART NO.	DESCRIPTION
20	★820055	Oil Seal	85B	820027	Screw (Gear Cover Assembly)	718B	820061	Locating Pin
85	820026	Screw (Gear Cover Assembly)	86	▽ 825119	Gear Cover Assembly	1073	820069	Nut (Gear Cover Assembly)
85A	820029	Screw (Gear Cover Assembly)	88	★820148	Gear Reduction Cover Gasket			

▽ Refer To Repair Manual MS 0750 For Assembly and/or Torque Requirements.

★ Included in Gasket Set—See Ref. No. 358

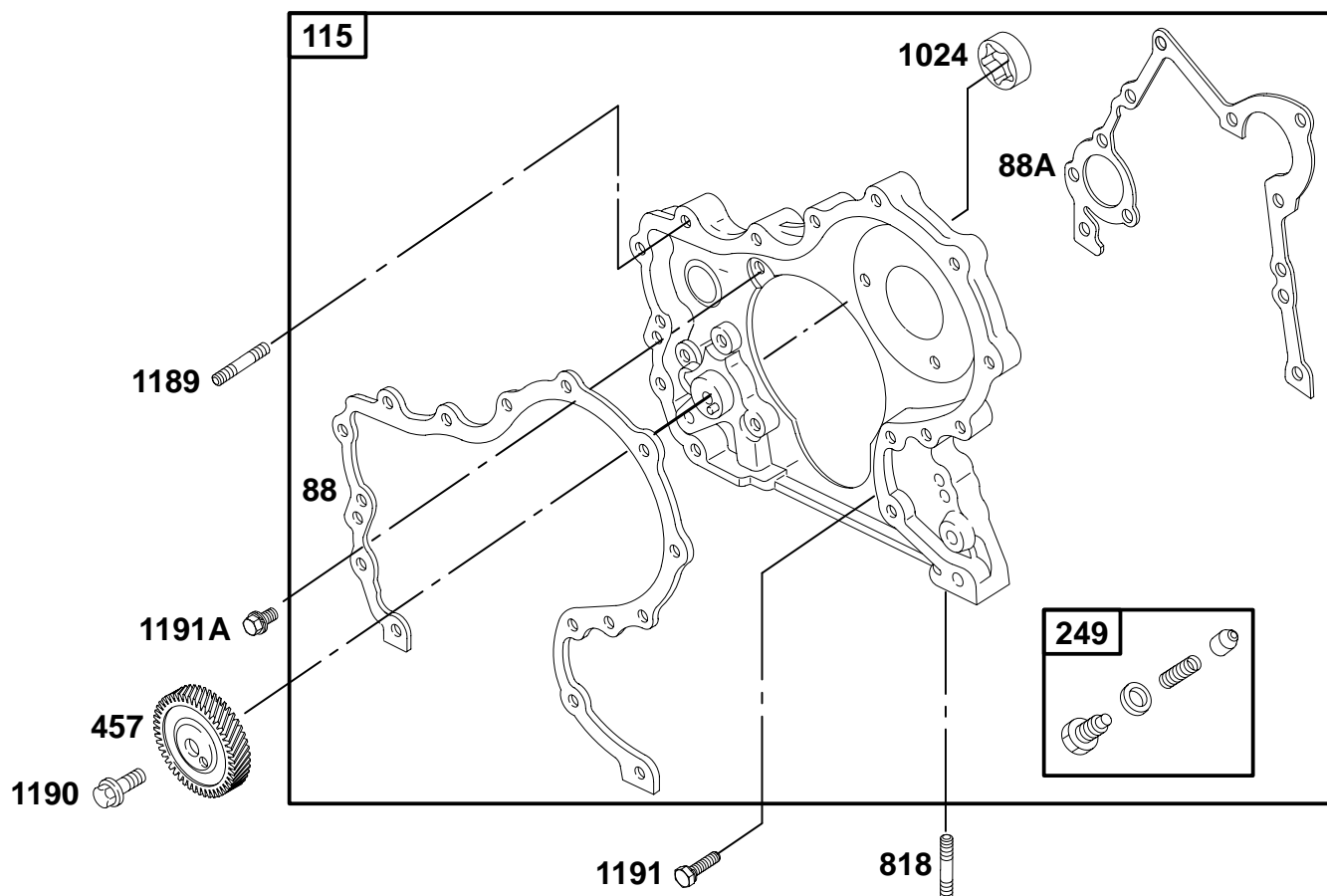
6354-9

◆ Included in Carburetor OverhaulKit – See Ref. 121

△ Included in Valve Overhaul Gasket Set—See Ref. No. 1033

Assemblies include all parts shown in frames.

129



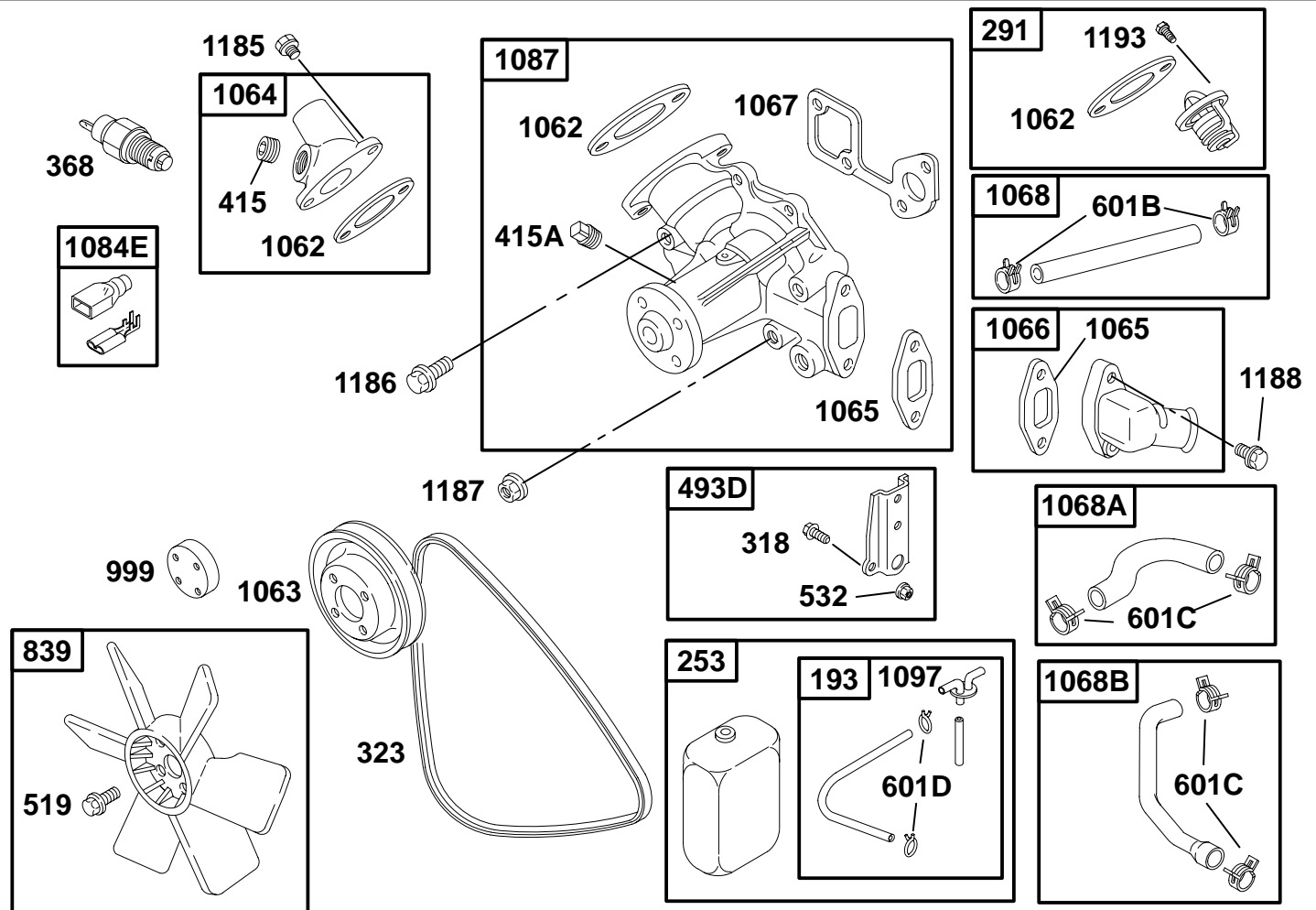
REF. NO.	PART NO.	DESCRIPTION	REF. NO.	PART NO.	DESCRIPTION	REF. NO.	PART NO.	DESCRIPTION
88	★820148	Gear Reduction Cover Gasket	818	820016	Stud (Oil Filter Screen)	1190	820180	Screw (Oil Pump Drive Gear)
88A	★820155	Gear Reduction Cover Gasket	1024		Oil Pump (Sold in Gear Hsg. Only, Ref. 115)	1191	820030	Screw (Gear Housing)
115	▽ 825120	Gear Housing	1189	820156	Stud (Gear Housing)	1191A	820033	Screw (Gear Housing)
249	▽ 825032	Pressure Relief Valve						
457	820615	Oil Pump Drive Gear (Used After Code Date 99063000). Used on Type No(s). 0205.						
<p align="center"><b>Note</b></p> <p><b>820615</b> Oil Pump Drive Gear (Used After Code Date 98123100 and Before Code Date 99070100). Used on Type No(s). 0105.</p> <p><b>820121</b> Oil Pump Drive Gear (Used Before Code Date 99010100).</p>								

▽ Refer To Repair Manual MS 0750 For Assembly and/or Torque Requirements.

★ Included in Gasket Set—See Ref. No. 358

◆ Included in Carburetor Overhaul Kit – See Ref. 121

△ Included in Valve Overhaul Gasket Set—See Ref. No. 1033



REF. NO.	PART NO.	DESCRIPTION	REF. NO.	PART NO.	DESCRIPTION	REF. NO.	PART NO.	DESCRIPTION
193	820219	Reserve Tank Hose	601C	820256	Hose Clamp	1084E	825160	Terminal Connector (Water Temperature Switch )
253	825069	Reserve Tank	601D	820257	Hose Clamp	1087	▽ 825275	Water Pump
291	825064	Thermostat	839	▽ 825224	Radiator Fan	1097	▽ 820287	Surge Tank Cap
318	820033	Screw (Mounting Bracket)	999	820218	Spacer	1185	820031	Screw (Outlet Housing)
323	▽ 820271	Vee Belt	1062	★820093	Outlet Housing Gasket	1186	820022	Screw (Water Pump)
368	820208	Water Temperature Switch	1063	820095	Pump Pulley	1187	820181	Nut (Water Pump)
415	820052	Plug	1064	825074	Outlet Housing	1188	820031	Screw (Inlet Housing)
415A	820182	Plug	1065	★820098	Inlet Housing Gasket	1193	820185	Screw (Thermostat)
493D	825106	Mounting Bracket	1066	825051	Inlet Housing			
519	820030	Screw (Radiator Fan)	1067	★820100	Water Pump Gasket			
532	820011	Nut (Mounting Bracket)	1068	825045	Hose/Clamp Assembly			
601B	820045	Hose Clamp	1068A	825134	Hose/Clamp Assembly			
			1068B	825133	Hose/Clamp Assembly			

▽ Refer To Repair Manual MS 0750 For Assembly and/or Torque Requirements.

★ Included in Gasket Set—See Ref. No. 358

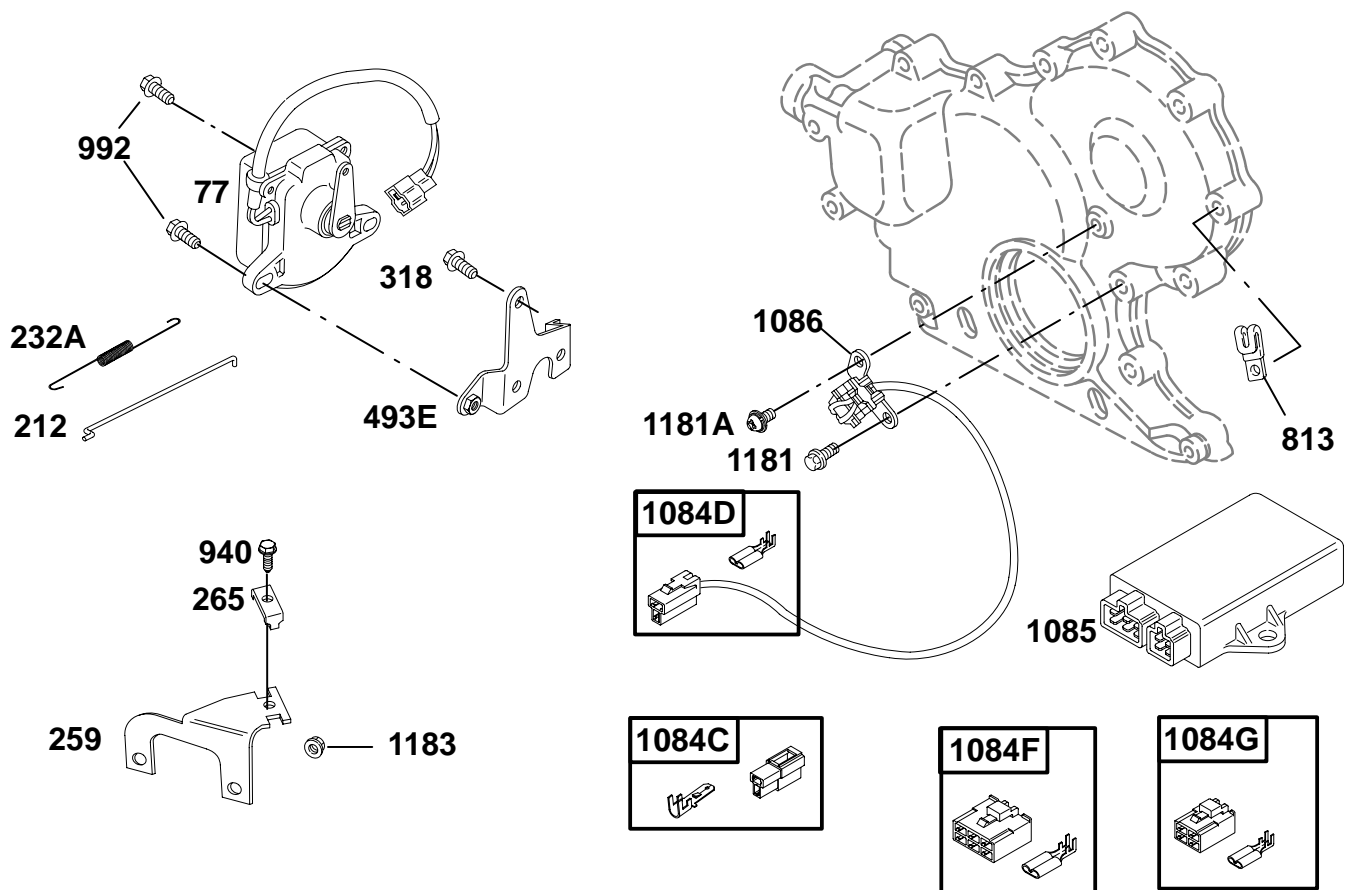
6354-11

Assemblies include all parts shown in frames.

◆ Included in Carburetor Overhaul Kit – See Ref. 121

△ Included in Valve Overhaul Gasket Set—See Ref. No. 1033

129



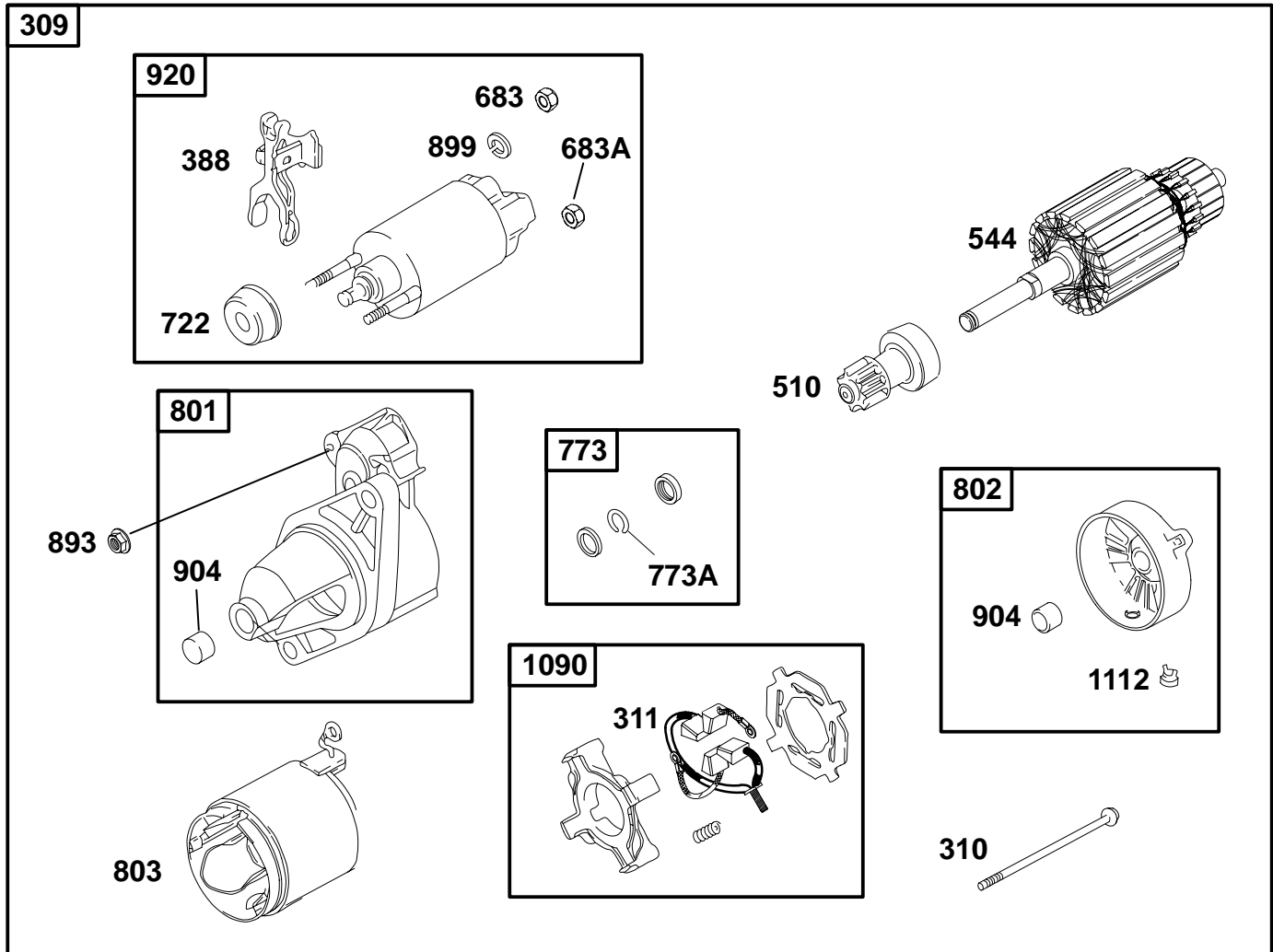
REF. NO.	PART NO.	DESCRIPTION	REF. NO.	PART NO.	DESCRIPTION	REF. NO.	PART NO.	DESCRIPTION
77	820209	Servo Motor	940	820012	Screw (Casing Clamp)	1084G	825163	Connector (Ignition Module–Male)
212	820226	Throttle Link	992	820228	Screw (Servo Motor)	1085	825273	Ignition Module
232A	820227	Governor Link Spring (Used on Engines With Electronic Governors)	1084C	825156	Connector (Trigger–Female)	1086	825009	Ignition Trigger
259	820224	Casing Clamp Bracket	1084D	825157	Connector (Alternator and Ign. Trigger–Male)	1181	820029	Screw (Ignition Trigger)
265	691024	Casing Clamp	1084F	825162	Connector (Ignition Module–Male)	1181A	820013	Screw (Ignition Trigger)
318	820034	Screw (Mounting Bracket)				1183	820011	Nut (Casing Clamp Bracket)
493E	820223	Mounting Bracket						
813	820047	Clamp						

▽ Refer To Repair Manual MS 0750 For Assembly and/or Torque Requirements.

★ Included in Gasket Set–See Ref. No. 358

◆ Included in Carburetor OverhaulKit – See Ref. 121

△ Included in Valve Overhaul Gasket Set–See Ref. No. 1033



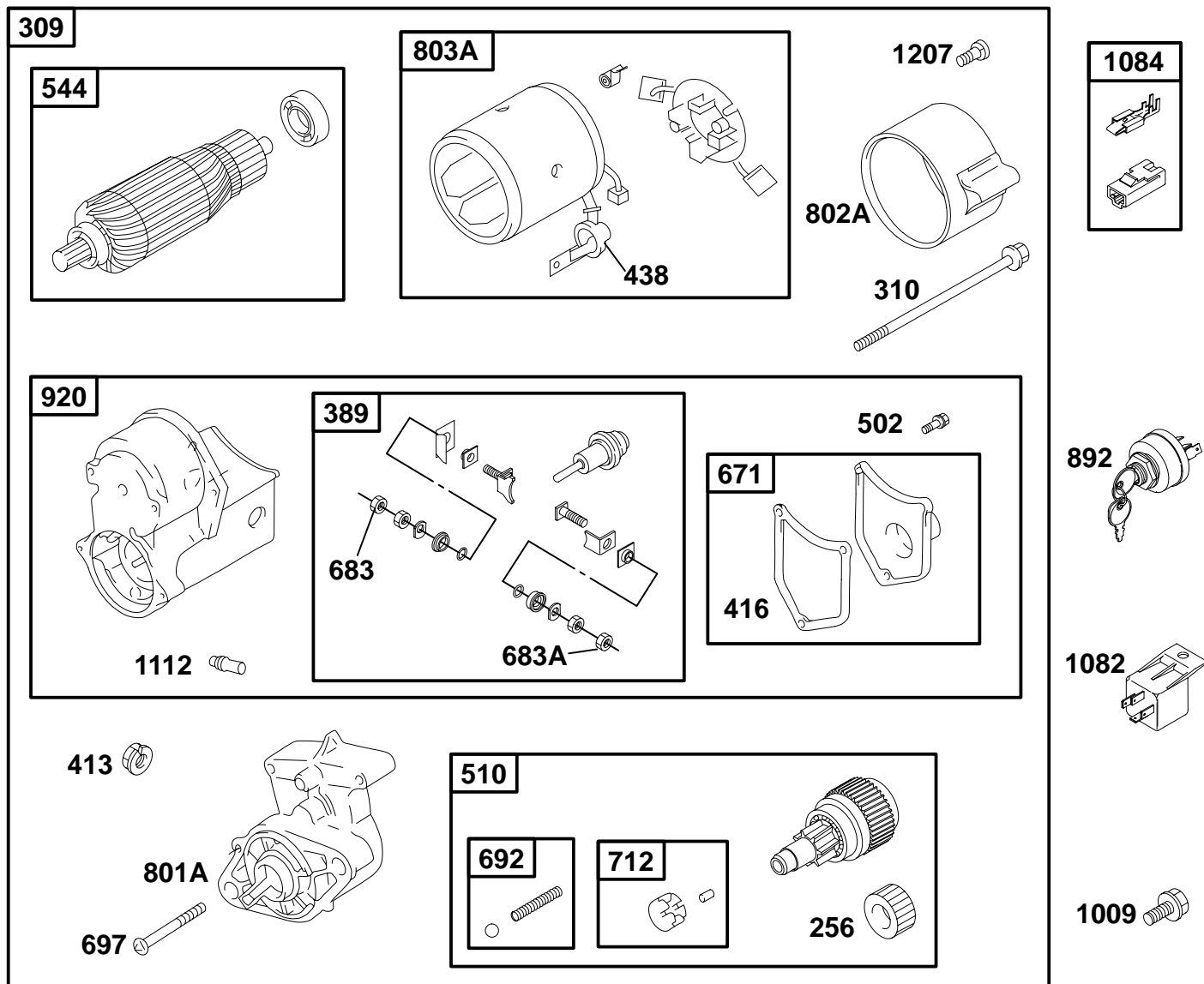
REF. NO.	PART NO.	DESCRIPTION	REF. NO.	PART NO.	DESCRIPTION	REF. NO.	PART NO.	DESCRIPTION
309	825095	Starter Motor (0.8 KW)	683A	820809	Nut (Terminal)	893	820805	Nut (Solenoid)
310	820807	Screw	722	820801	Plunger Seal	899	820811	Washer (Terminal)
311	825411	Brush Set	773	825420	Retainer	904	820793	Needle Bearing
388	820799	Pinion Drive lever	773A	820803	Retainer	920	825418	Starter Solenoid
510	820789	Starter Drive	801	820791	Drive Cap	1090	825412	Brush Retainer
544	825414	Starter Armature	802	825416	End Cap	1112	820797	Vent Plug
683	820813	Nut (Terminal)	803	820783	Starter Housing			

▽ Refer To Repair Manual MS 0750 For Assembly and/or Torque Requirements.

★ Included in Gasket Set—See Ref. No. 358

◆ Included in Carburetor Overhaul Kit – See Ref. 121

△ Included in Valve Overhaul Gasket Set—See Ref. No. 1033



REF. NO.	PART NO.	DESCRIPTION	REF. NO.	PART NO.	DESCRIPTION	REF. NO.	PART NO.	DESCRIPTION
256	820745	Starter Drive Gear	671	825400	Solenoid Cover	803A	825399	Starter Housing (Includes Brushes, Springs and Brush Retainer)
309	825083	Motor-Starter (1.0 KW Starter Motor)	683	820723	Nut (Solenoid Terminal)	892	692318	Key Switch
310	820755	Screw (Starter Motor)	683A	820721	Nut (Solenoid Terminal)	920	825398	Starter Solenoid
389	825436	Plunger/Terminal Kit	692	825425	Spring Detent	1009	820019	Screw (Starter Motor)
413	820067	Nut (Starter Motor)	697	820751	Screw (Drive Cap)	1082	820455	Starter Relay
416	820733	Solenoid Cover Gasket	712	825424	Clutch Roller	1084	825266	Terminal Connector (Starter Terminal)
438	820725	Terminal Boot	801A	825396	Drive Cap	1112	820737	Vent Plug
502	820739	Screw (Solenoid Cover)	802A	820743	End Cap	1207	820754	Screw (End Cap)
510	825394	Starter Drive						
544	825392	Starter Armature						

▽ Refer To Repair Manual MS 0750 For Assembly and/or Torque Requirements.

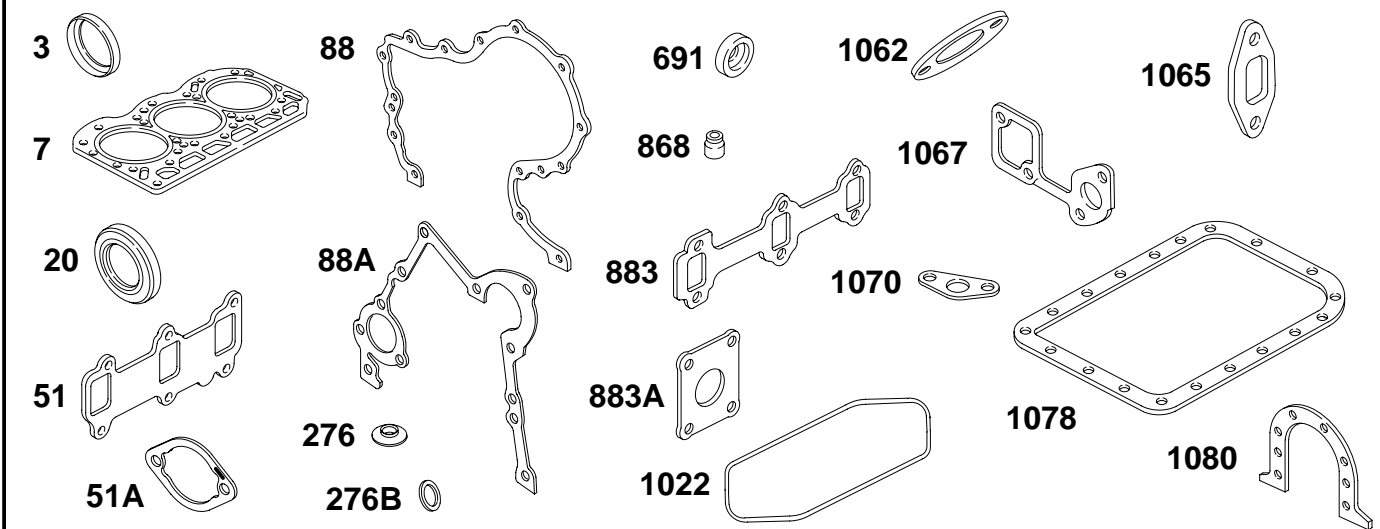
★ Included in Gasket Set—See Ref. No. 358

◆ Included in Carburetor Overhaul Kit – See Ref. 121

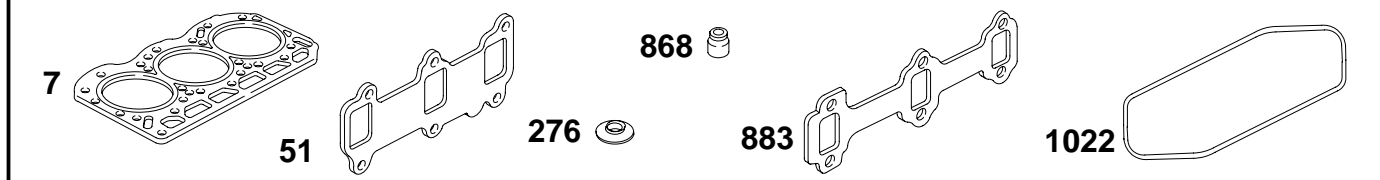
△ Included in Valve Overhaul Gasket Set—See Ref. No. 1033



## 358 ENGINE GASKET SET



## 1033 VALVE OVERHAUL KIT



REF. NO.	PART NO.	DESCRIPTION	REF. NO.	PART NO.	DESCRIPTION	REF. NO.	PART NO.	DESCRIPTION
3	★820056	Oil Seal	276B	★820582	Sealing Washer (16 mm Dia. Plug, Requires 2 For Dual Drain Oil Pans)	883A	★820670	Exhaust Gasket (Muffler) (Used After Code Date 98123100).
7	★Δ7820648	Cylinder Head Gasket (Used After Code Date 98123100).						
		<b>Note</b>			<b>Note</b>			<b>Note</b>
		★Δ7820152 Cylinder Head Gasket (Used Before Code Date 99010100).			★820049 Sealing Washer (12 mm Dia. Plug, Requires 2 For Dual Drain Oil Pans)			★Δ7820085 Exhaust Gasket (Used Before Code Date 99010100).
20	★820055	Oil Seal	358	825378	Gasket Set (Used After Code Date 98123100).	1022	★Δ820150	Rocker Cover Gasket
51	★◆820087	Intake Gasket				1033	825379	Valve Overhaul Kit (Used After Code Date 98123100).
51A	★◆820385	Intake Gasket			<b>Note</b>			<b>Note</b>
88	★820148	Gear Reduction Cover Gasket			★Δ7825056 Gasket Set (Used Before Code Date 99010100).			★Δ7825057 Valve Overhaul Kit (Used Before Code Date 99010100).
88A	★820155	Gear Reduction Cover Gasket	868	★Δ820041	Valve Seal	1062	★820093	Outlet Housing Gasket
276	★Δ820064	Sealing Washer	883	★Δ820817	Exhaust Gasket (Manifold)	1065	★820098	Inlet Housing Gasket
						1067	★820100	Water Pump Gasket
						1070	★820104	Oil Strainer Gasket
						1078	★820137	Oil Pan Gasket
						1080	★820145	Seal Retainer Gasket

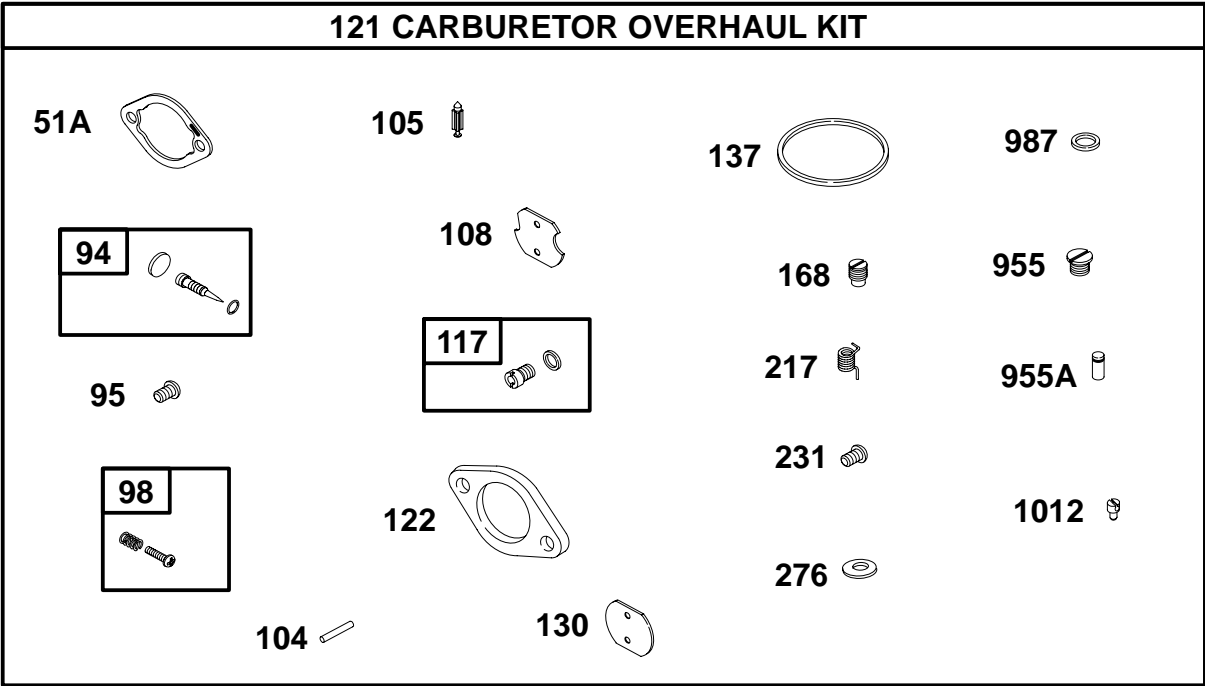
▽ Refer To Repair Manual MS 0750 For Assembly and/or Torque Requirements.

★ Included in Gasket Set—See Ref. No. 358

◆ Included in Carburetor Overhaul Kit—See Ref. 121

Δ Included in Valve Overhaul Gasket Set—See Ref. No. 1033





REF. NO.	PART NO.	DESCRIPTION	REF. NO.	PART NO.	DESCRIPTION	REF. NO.	PART NO.	DESCRIPTION
51A	◆★820385	Intake Gasket	121	825441	Carburetor Overhaul Kit	231	◆820485	Screw (Throttle Valve, Sold In Kit Only)
94	◆825374	Idle Mixture Kit	122	◆820082	Carburetor Spacer	276	◆820511	Sealing Washer
95	◆	Screw (Throttle Valve, Sold In Kit Only)	130	◆	Throttle Valve (Sold In Kit Only)	955	◆820510	Carburetor Plug
98	◆825250	Idle Speed Kit	137	◆820508	Float Bowl Gasket	955A	◆820520	Carburetor Plug
104	◆693506	Float Hinge Pin	168	◆820603	Idle Circuit Jet	987	◆	Throttle Shaft Seal (Sold In Kit Only)
105	◆820506	Float Needle Valve	217	◆	Choke Return Spring (Sold In Kit Only)	1012	◆	Link Retainer (Sold In Kit Only)
108	◆	Choke Valve (Sold In Kit Only)						
117	◆825439	Main Jet						

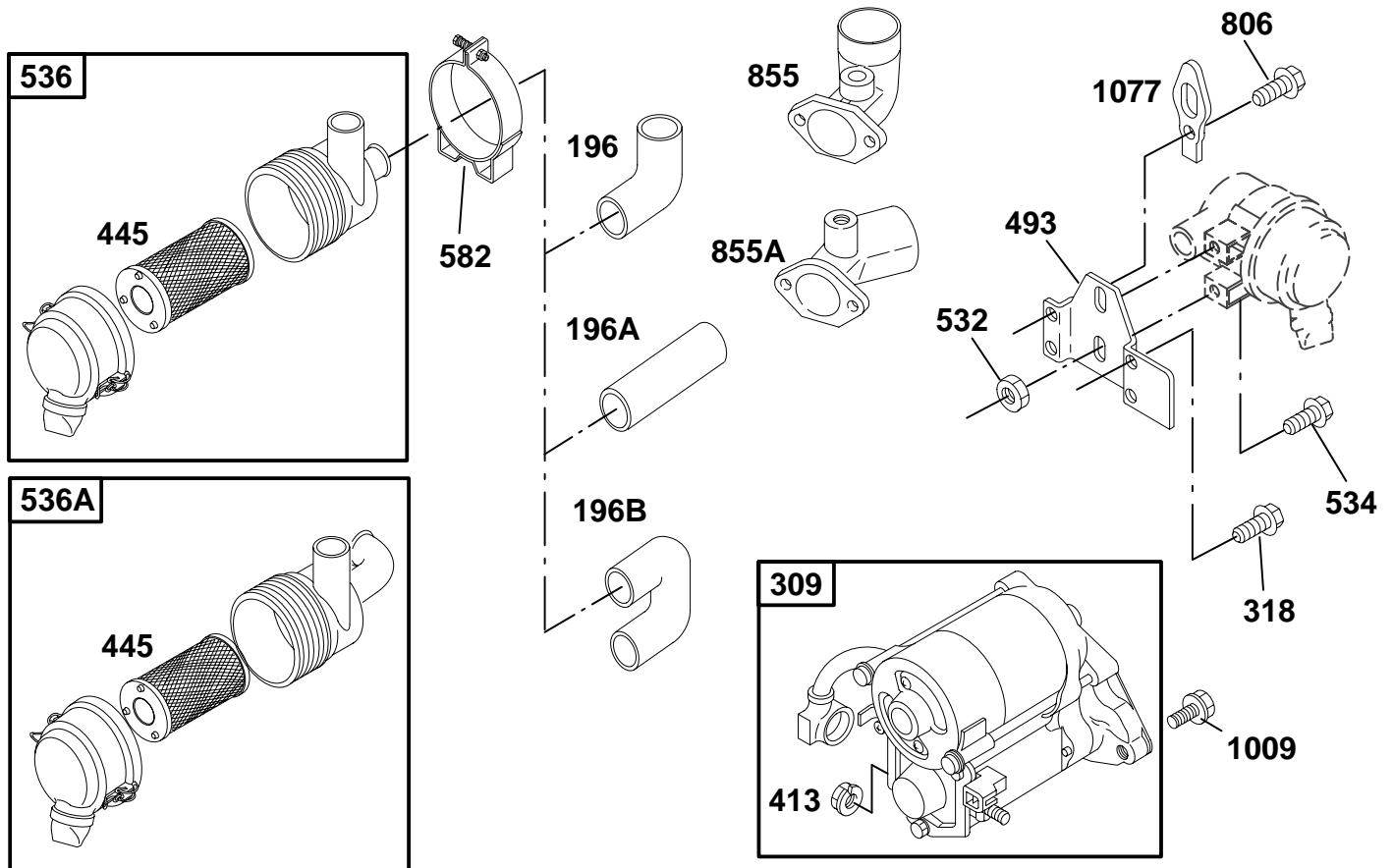
▽ Refer To Repair Manual MS 0750 For Assembly and/or Torque Requirements.

★ Included in Gasket Set—See Ref. No. 358

◆ Included in Carburetor OverhaulKit – See Ref. 121

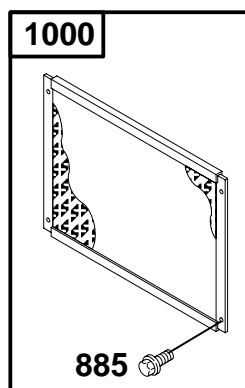
△ Included in Valve Overhaul Gasket Set—See Ref. No. 1033

# 587400 to 587499 GAS ENGINE OPTIONS

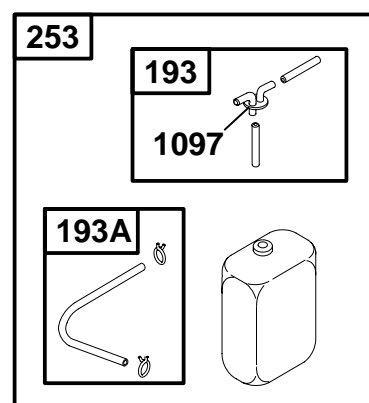
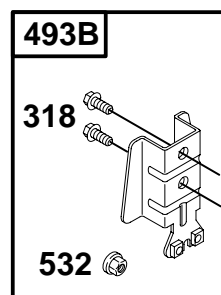
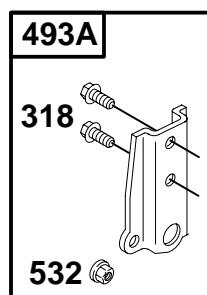
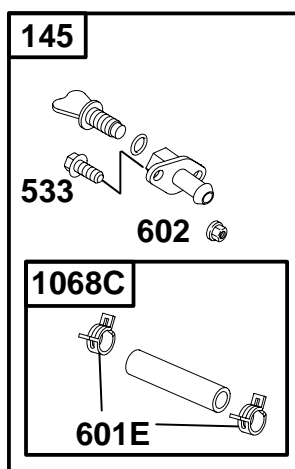
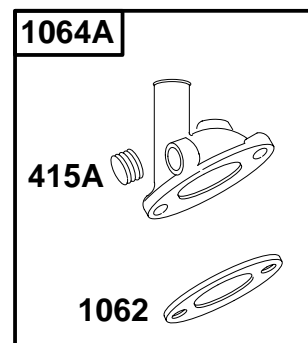
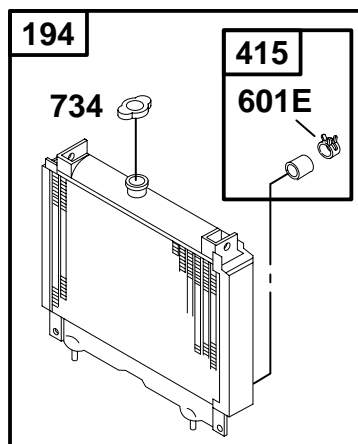
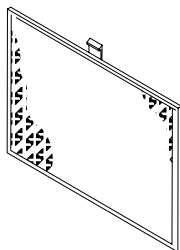


REF. NO.	PART NO.	DESCRIPTION	REF. NO.	PART NO.	DESCRIPTION	REF. NO.	PART NO.	DESCRIPTION
196	820554	Air Cleaner Connector (90 Degree)	493	820195	Mounting Bracket (Air Cleaner)	855A	820578	Air Cleaner Adaptor (Used With Positive Crankcase Ventilation Systems)
196A	820555	Air Cleaner Connector (Straight)	532	820070	Nut (Mounting Bracket)	1009	820019	Screw (Starter Motor)
196B	820556	Air Cleaner Connector (180 Degree)	534	820273	Screw (Air Cleaner)	<b>Note</b>		
309 ▽	825083	Starter Motor (1.0 KW)	536	825117	Air Cleaner (With Vacuum Adaptor)	820451	820451	Screw (Used To Mount Starter To SAE Housings)
318	820212	Screw (Mounting Bracket)	536A	825118	Air Cleaner (90 Degree Elbow, With Vacuum Adaptor)	820265	820265	Screw (Used To Mount Starter to General Housings)
413	820067	Nut (Starter Motor)	582	820230	Air Cleaner Clamp	1077	820254	Lifting Bracket
445	820263	Air Cleaner Cartridge Filter	806	820024	Screw (Lifting Bracket)			
			855	820446	Air Cleaner Adaptor			

# 587400 to 587499 GAS ENGINE OPTIONS

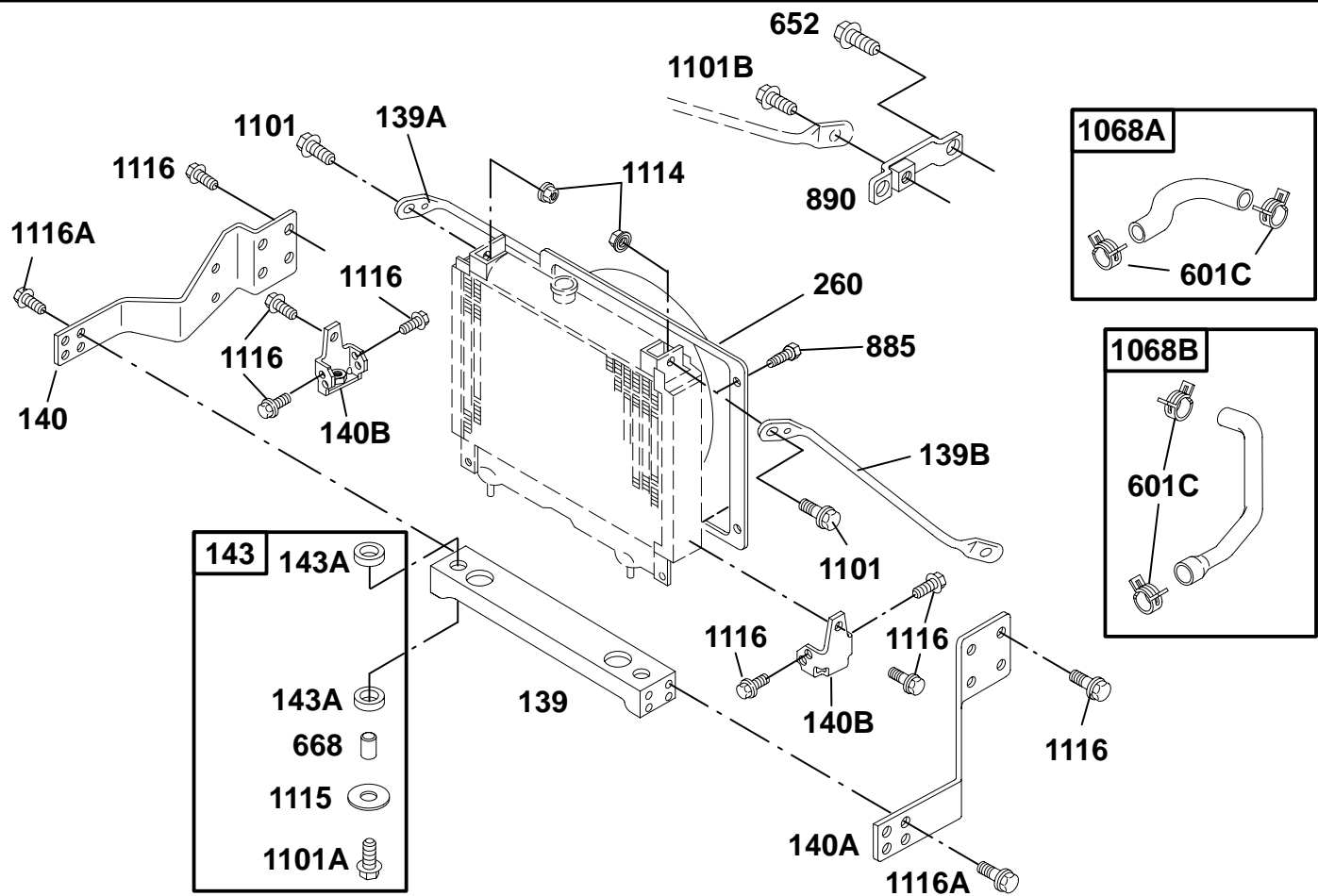


1001



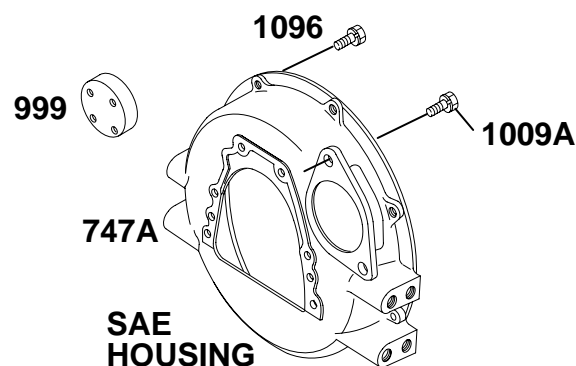
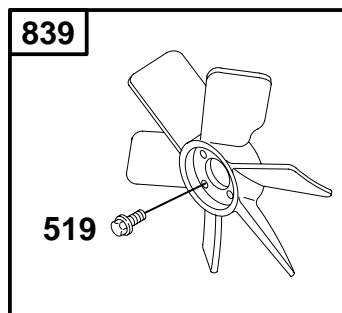
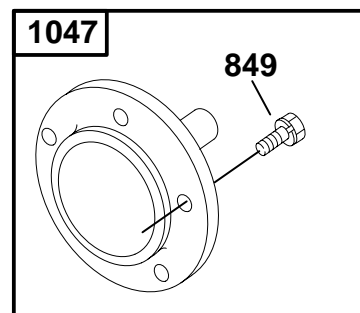
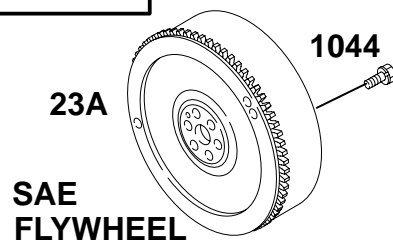
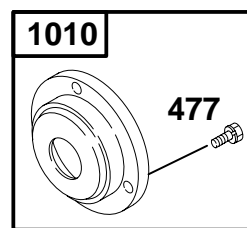
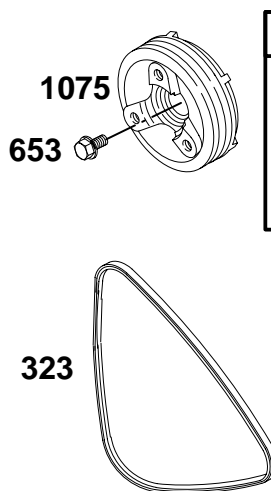
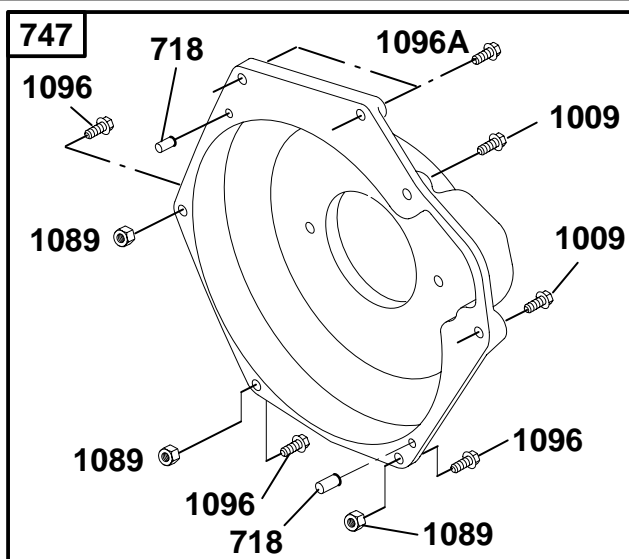
REF. NO.	PART NO.	DESCRIPTION	REF. NO.	PART NO.	DESCRIPTION	REF. NO.	PART NO.	DESCRIPTION
145	825072	Drain Valve	493A	825106	Mounting Bracket	885	820636	Screw (Radiator Guard) (Used After Code Date 98082000).
193	825295	Reserve Tank Hose	493B	825314	Mounting Bracket	<b>Note</b>		
193A	825296	Reserve Tank Hose	532	820303	Nut (Mounting Bracket)	820394	820394	Screw (Radiator Guard) (Used Before Code Date 98082100).
194	825068	Radiator	533	820034	Screw (Drain Valve)	1000	825103	Radiator Guard
253	825069	Reserve Tank	601E	820201	Hose Clamp	1001	820259	Radiator Screen
318	820034	Screw (Mounting Bracket)	602	820011	Nut (Drain Valve)	1062	★820093	Outlet Housing Gasket
415	820052	Plug (Outlet Housing)	734	820258	Radiator Cap	1064A	825267	Outlet Housing
415A	825075	Plug (Radiator Drain)				1068C	825073	Hose/Clamp Assembly
						1097	820287	Surge Tank Cap

## 587400 to 587499 GAS ENGINE OPTIONS



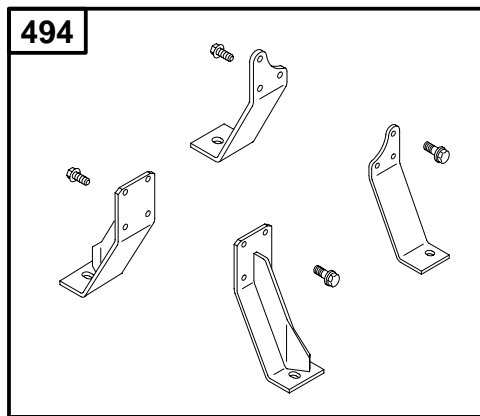
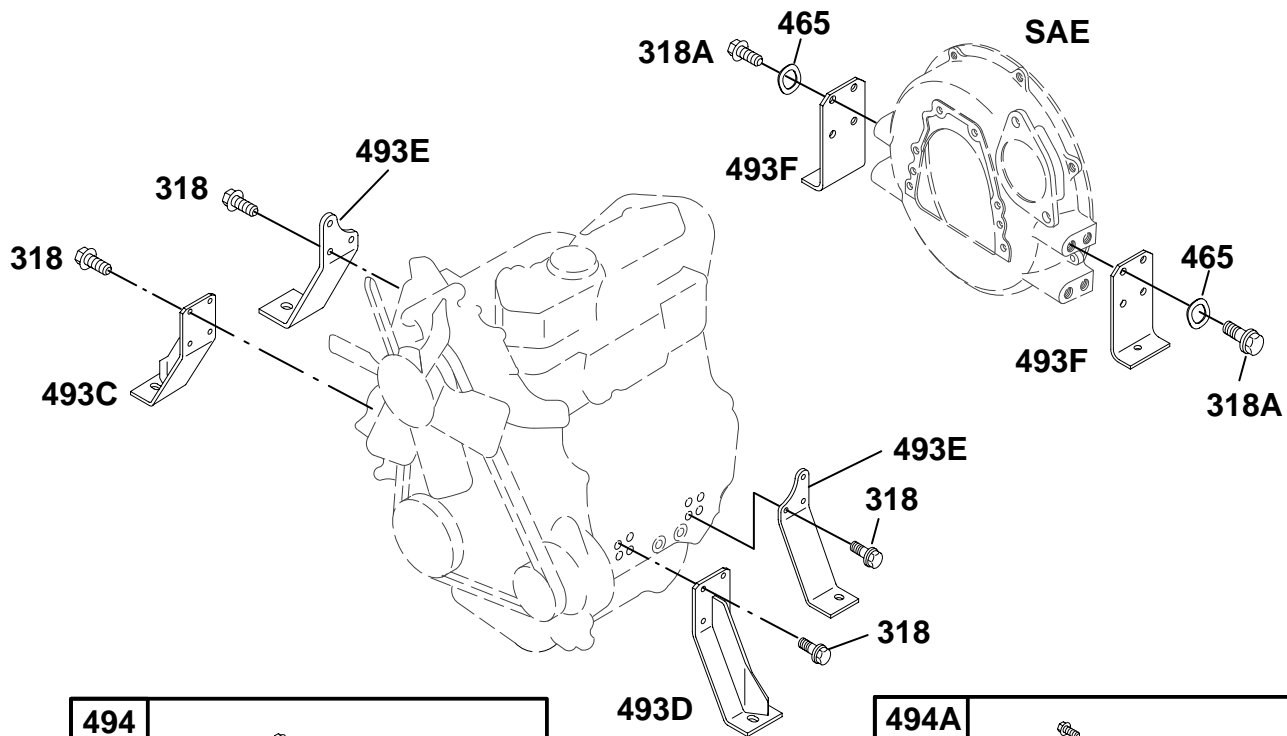
REF. NO.	PART NO.	DESCRIPTION	REF. NO.	PART NO.	DESCRIPTION	REF. NO.	PART NO.	DESCRIPTION
139	820255	Radiator Support (Front)	885	820636	Screw (Fan Shroud) (Used After Code Date 98082000).	1101B	820273	Screw (Radiator Support)
139A	820190	Radiator Support (Right Hand)				1114	820070	Nut (Radiator Support)
139B	820191	Radiator Support (Left Hand)			<b>Note</b>	1115	820296	Washer (Radiator Mount)
140	820192	Radiator Bracket (Right Hand)			820394 Screw (Fan Shroud) (Used Before Code Date 98082100).	1116	820024	Screw (Radiator Bracket Used With Engine Mounts Only)
140A	820193	Radiator Bracket (Left Hand)	890	820194	Support Bracket (Radiator)			<b>Note</b>
140B	820294	Radiator Bracket	1068A	825134	Hose/Clamp Assembly (Outlet)			820023 Screw (Radiator Bracket Used With Engine Mounts And Radiator Brackets)
143	825135	Radiator Mount						
143A	820198	Radiator Mount	1068B	825133	Hose/Clamp Assembly (Inlet)			
260	820220	Fan Shroud	1101	820272	Screw (Radiator Mount)			
601C	820256	Clamp	1101A	820309	Screw (Radiator Support)	1116A	820174	Screw (Radiator Bracket)
652	820452	Screw (Radiator Support)						
668	820307	Spacer						

# 587400 to 587499 GAS ENGINE OPTIONS

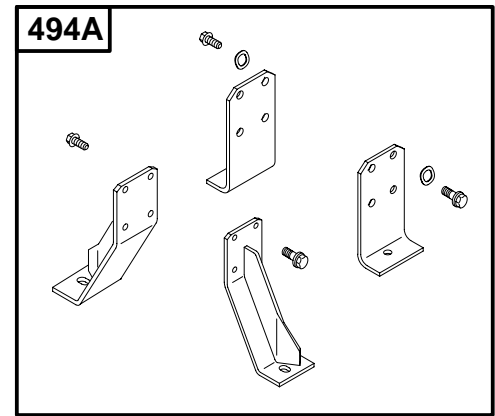


REF. NO.	PART NO.	DESCRIPTION	REF. NO.	PART NO.	DESCRIPTION	REF. NO.	PART NO.	DESCRIPTION
23A	▽ 825071	Flywheel Assembly	747	▽ 825098	Flywheel Housing—KTR®	1010	825079	Bearing Retainer
323	▽ 820239	Vee Belt (940 mm Length)			(Small Pilot, 2 Holes)	1044	820080	Screw (Flywheel)
		<b>Note</b>			<b>Note</b>	1047	▽ 825268	Stub Shaft (1 1/8" Diameter Shaft)
477	820199	Screw (Bearing Retainer)	747A	▽ 820248	Flywheel Housing (SAE)			<b>Note</b>
519	820032	Screw (Radiator Fan)	839	▽ 825223	Radiator Fan (290 mm Dia.)			825078 Stub Shaft (1 7/16" Diameter Shaft)
		<b>Note</b>			<b>Note</b>			825123 Stub Shaft (1" Diameter Shaft)
		820030 Screw (Used With Spacer, Ref. 999)			825136 Radiator Fan (Puller, 320 mm Dia.)			825269 Stub Shaft (28.55 mm Diameter Shaft)
653	820079	Screw (Crankshaft Pulley)	849	820212	Screw (Stub Shaft)	1075	820123	Crankshaft Pulley
718	820264	Locating Pin	999	820218	Spacer (Radiator Fan)	1089	820070	Nut (Flywheel Housing)
			1009	820265	Screw (Sarter Motor)	1096	820241	Screw (Flywheel Housing)
			1009A	820451	Screw (Sarter Motor)	1096A	820450	Screw (Flywheel Housing)

# 587400 to 587499 GAS ENGINE OPTIONS



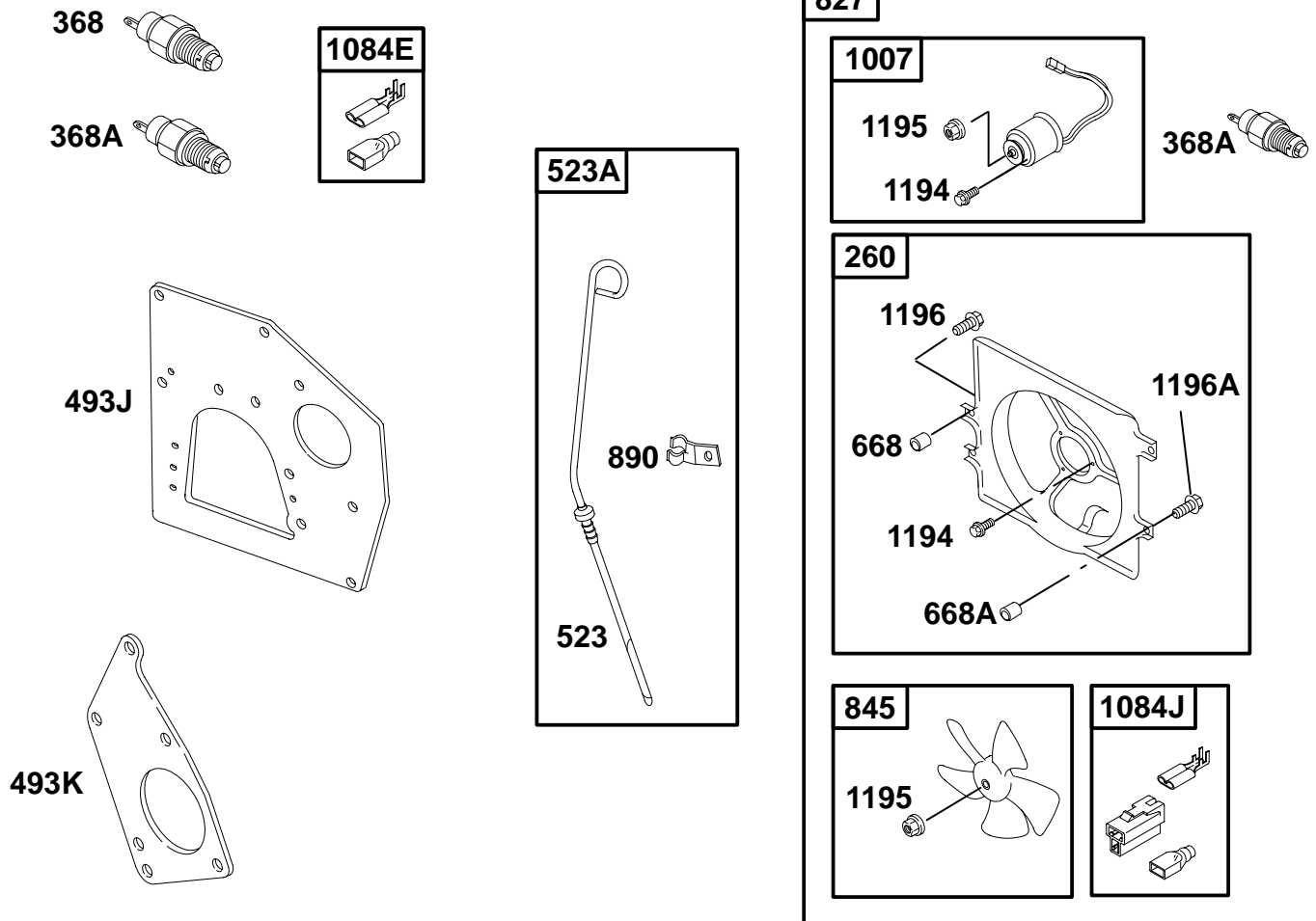
**GENERAL MOUNTING KIT**



**SAE MOUNTING KIT**

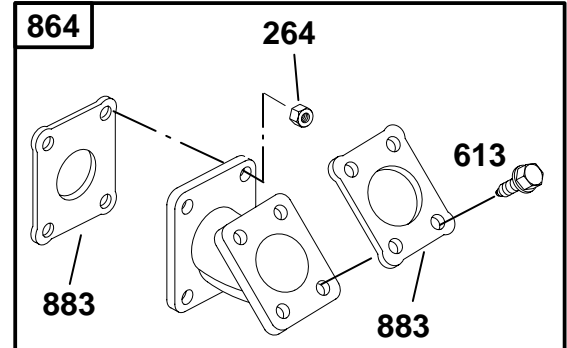
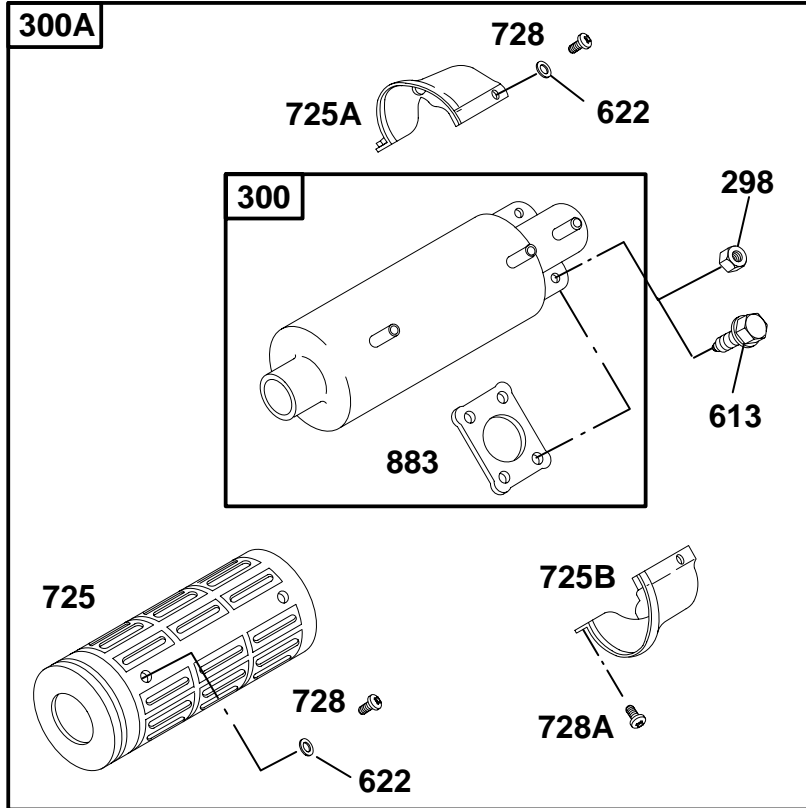
REF. NO.	PART NO.	DESCRIPTION	REF. NO.	PART NO.	DESCRIPTION	REF. NO.	PART NO.	DESCRIPTION
318	820024	Screw (Mounting Bracket, Used With Engine Mounts Only) —— <b>Note</b> —— 820023 Screw (Mounting Bracket, Use Only When Front Engine Mounts And Radiator Brackets Are Installed)	318A	820306	Screw (Mounting Bracket)	493E	820549	Mounting Bracket (Rear General)
			465	820449	Washer (Mounting Bracket)	493F	820550	Mounting Bracket (Rear SAE)
			493C	820551	Mounting Bracket (Front Right General and SAE)	494	825214	Engine Mount (General Mounting Kit)
			493D	820548	Mounting Bracket (Front Left General and SAE)	494A	825215	Engine Mount (SAE Mounting Kit)

# 587400 to 587499 GAS ENGINE OPTIONS



REF. NO.	PART NO.	DESCRIPTION	REF. NO.	PART NO.	DESCRIPTION	REF. NO.	PART NO.	DESCRIPTION
260	825132	Fan Shroud	523A	825287	Dipstick Assembly (Used After Code Date 98042000).	1007	825130	Fan Motor
368	820208	Water Temperture Switch (For Light)			————— <b>Note</b> —————	1084E	825160	Terminal Connector (Water Pump Switch)
368A	820277	Water Temperture Switch (For Fan Switch 92° Centigrade)		825081	Dipstick Assembly (Used Before Code Date 98042100).	1084J		Connectors (Sold In Kit Only)
493J	▽ 820283	Mounting Bracket	668	820280	Spacer	1194	820301	Screw (Fan Motor)
493K	▽ 820147	Mounting Bracket	668A	820279	Spacer	1195	820303	Nut (Fan Motor)
523	820572	Dipstick (Used After Code Date 98042000).	827	825217	Fan Motor Kit	1196	820305	Screw (Fan Shroud)
		————— <b>Note</b> —————	845	825131	Auxilliary Cooling Fan	1196A	820304	Screw (Fan Shroud)
		820237 Dipstick (Used Before Code Date 98042100).	890	820238	Support Bracket			

# 587400 to 587499 GAS ENGINE OPTIONS



REF. NO.	PART NO.	DESCRIPTION	REF. NO.	PART NO.	DESCRIPTION	REF. NO.	PART NO.	DESCRIPTION
264	820178	Nut (Muffler Adapter)	613	820023	Screw (Exhaust Muffler)	728	820429	Screw (Heat Shield)
298	820178	Nut (Muffler)	622	820631	Washer (Heat Shield)	728A	820431	Screw (Heat Shield)
300	825301	Exhaust Muffler	725	820423	Heat Shield	864	825358	Muffler Adaptor
300A	825200	Exhaust Muffler	725A	820427	Heat Shield	883	820670	Exhaust Gasket
			725B	820428	Heat Shield			