

748001-005

Illustrated Parts List

ELECTRIC MOTOR

Model Series

748001

TYPE NUMBERS
0020, 0021, 0022,
0111, 0112
0120 through 0131

748002

TYPE NUMBERS
0020, 0021, 0112,
0113, 0115, 0119,
0120, 0122, 0123,
0124, 0125, 0126,
0127

748003

TYPE NUMBERS
0020, 0021, 0112,
0118, 0120

748004

TYPE NUMBERS
0020,
0112 through 0121

748005

TYPE NUMBERS
0112, 0120, 0121,
0122

TO FIND

THE CORRECT NUMBER OF THE PART YOU NEED:

FOLLOW THE INSTRUCTIONS BELOW

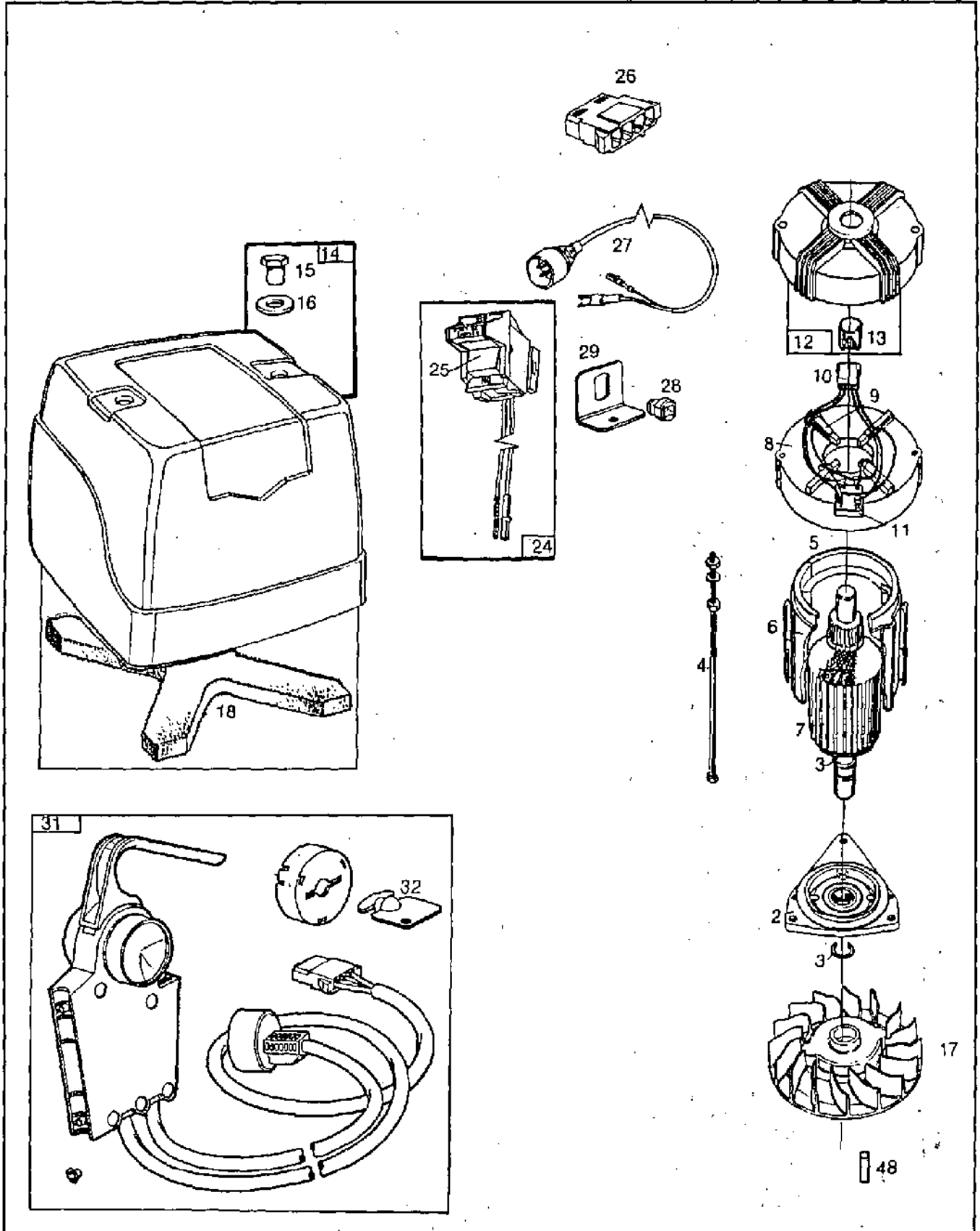
- A. Refer to Motor Model and Type Number that is on the end cap of motor.
- B. Refer to Illustrated Parts section and compare the old part with illustration. The number on the illustration is the Reference Number. Assemblies include all parts shown in frames. All parts shown in assembly frames on which individual reference numbers are given can be purchased separately.
- C. After the Reference Number has been identified, refer to the Numerical Parts List, where Reference and Master Part Number are listed.
- D. If the Motor Type Number does not appear after any part number listed under "Note," use the Master Part Number.

PRINTED IN U.S.A.



COPYRIGHT ©

748001



8551-1

Assemblies include all parts shown in frames.

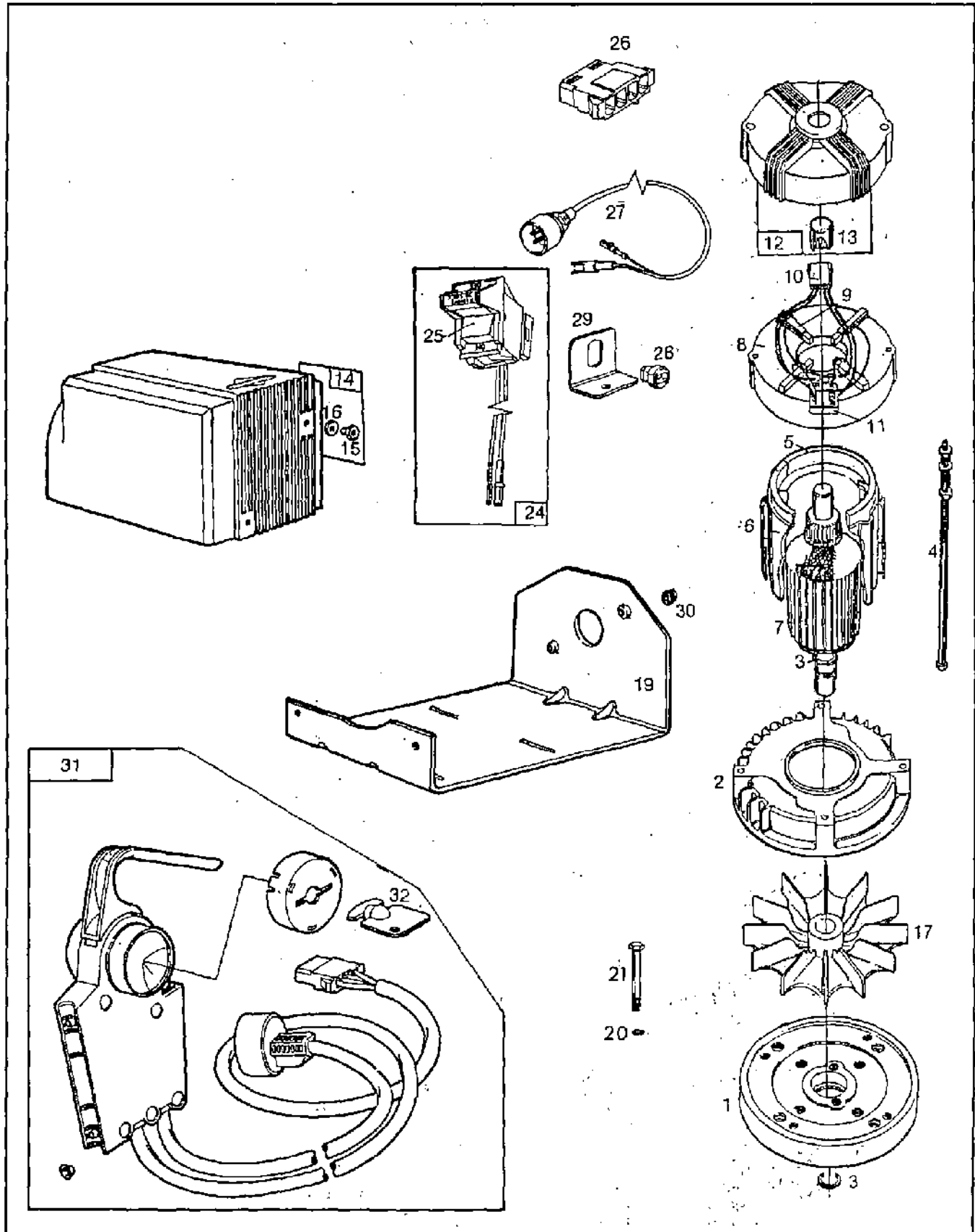
67

PARTS LIST FOR MODEL 748001

748001

REF. NO.	PART NO.	DESCRIPTION	REF. NO.	PART NO.	DESCRIPTION
2	394770	End Cap — Drive		397711	Cover Group — Motor (Includes Hardware and Filter) Used on Type No. 0125.
3	395477	Ring Set — Retaining		490182	Cover Group — Motor (Includes Hardware) Used on Type Nos. 0130, 0131.
4	395471	Bolt — Thru (Includes Two Sets)		15	231298 Nut — Hex
5	394750	Housing Assembly		16	93852 Washer
6	395468	Insulator Group — Housing		17	280478 Fan Used on Type No. 0126.
7	396546	Armature Group Used on Type Nos. 0020, 0111, 0120, 0121, 0123, 0126, 0128.		280515	Fan Used on Type Nos. 0021, 0112, 0122, 0124.
	398653	Armature Group Used on Type Nos. 0021, 0112, 0122, 0124, 0130, 0131.		280529	Fan Used on Type Nos. 0022, 0127.
	397976	Armature Group Used on Type No. 0125.		491389	Fan Used on Type Nos. 0020, 0111, 0120, 0121, 0125, 0128, 0129.
	398817	Armature Group Used on Type Nos. 0022, 0127.		18	271711 Filter Used on Type Nos. 0120, 0121, 0122, 0125, 0126, 0127, 0128, 0129.
	398822	Armature Group Used on Type No. 0129.		291792	Used on Type Nos. 0111, 0112.
8	280569	Box — Brush (Used after Code Date 8512161)		24	398135 Switch — Starter Used on Type Nos. 0130, 0131.
	280361	Box — Brush (Used before Code Date 8512171)		25	280594 Switch — Key Used on Type Nos. 0130, 0131.
9	398575	Brush Group. (Includes Brush Holders and Retainers) (Used after Code Date 8512161) For Retainers Only Order Part No. 399187.		26	280081 Housing — Socket Used on Type Nos. 0130, 0131.
	395467	Brush Group (Includes Brush Holders) Used before Code Date 8512171)		27	398270 Cord — Power Supply Used on Type Nos. 0130, 0131.
10	395478	Lead Group		28	280556 Bushing — Cord Used on Type Nos. 0130, 0131.
11	394777	Rectifier		29	223555 Bracket — Bushing Used on Type Nos. 0130, 0131.
12	398440	End Cap — Brush (Used after Code Date 8512161)		31	399192 Control Box Group (12 Amp)
	394773	End Cap — Brush (Used before Code Date 8512171)		32	280593 Key Set (Includes 2 Keys)
13	394769	Bearing — Needle		48	94376 Key
14	396267	Cover Group — Motor (Includes Hardware and Filter) Used on Type Nos. 0022, 0121, 0122, 0123, 0124, 0126, 0127, 0128, 0129.			

748002



8551-2

Assemblies include all parts shown in frames.

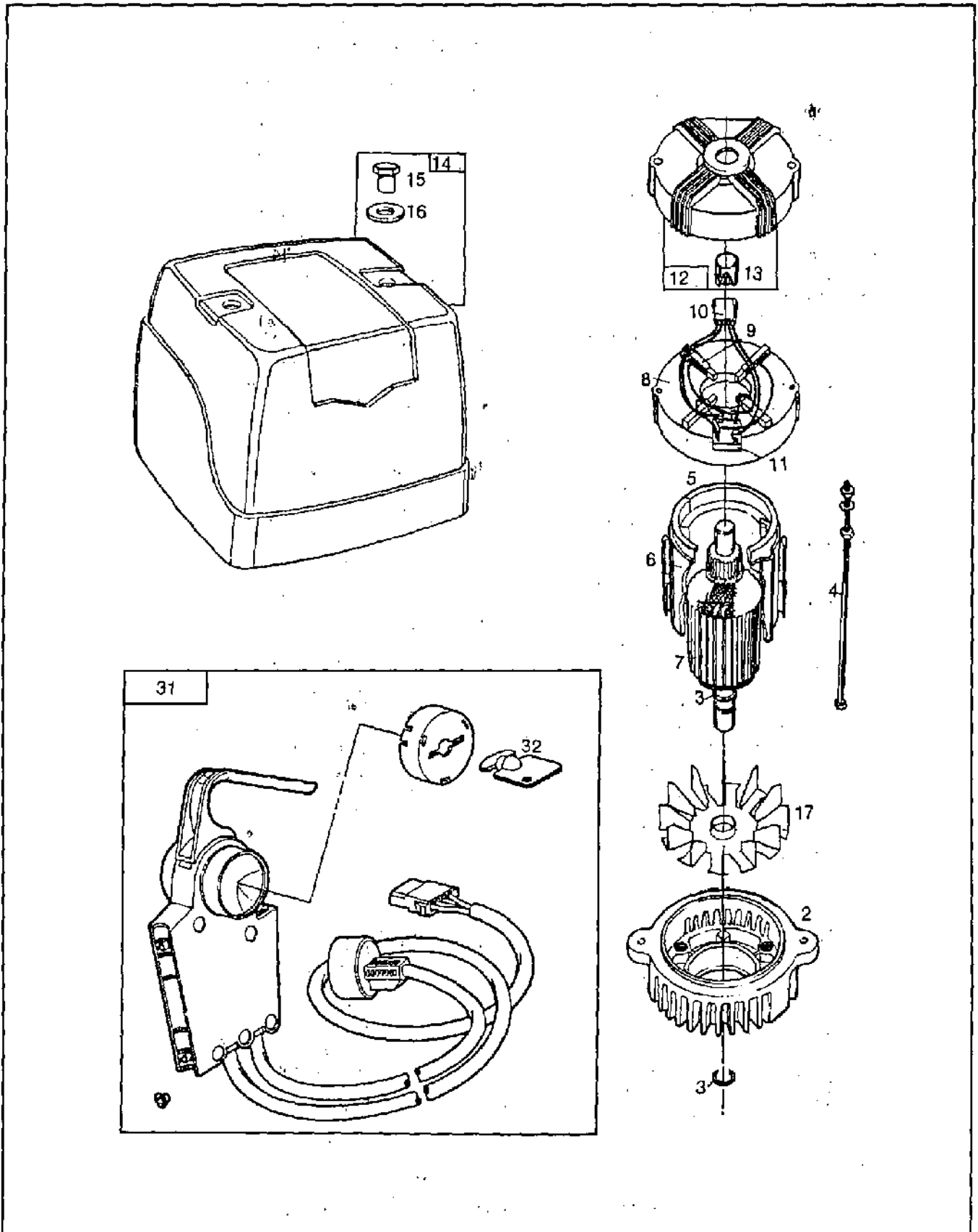
67

PARTS LIST FOR MODEL 748002

748002

REF. NO.	PART NO.	DESCRIPTION	REF. NO.	PART NO.	DESCRIPTION
1	399354	Bearing Housing Assembly (Used after Code Date 850724011.)		394773	End Cap — Brush (Used before Code Date 8512171.)
	Note:	397662 Bearing Housing Assembly (Used before Code Date 850725011.)	13	394769	Bearing — Needle
			14	399100	Cover Group — Motor (Includes Hardware) Horizontal Mount Used on Type No. 0124, 0125, 0126.
2	213119	Housing — Fan (Used after Code Date 850724011.)	15	231298	Nut — Hex
	Note:	212888 Housing—Fan (Used before Code Date 850725011.)	16	93852	Washer
3	395477	Ring Set — Retaining	17	280530	Fan
4	395471	Bolt — Thru (Includes Two Sets)	19	223565	Bracket — Mounting (NEMA 56) (Used after Code Date 850724011.)
5	394750	Housing Assembly		Note:	223465 Bracket— Mounting (NEMA 56) (Used before Code Date 850725011.)
6	395468	Insulator Group — Housing	223614	Bracket — Engine Mounting Used on Type No. 0125.	
7	398672	Armature & Fan Group Used on Type Nos. 0020, 0112, 0119, 0120, 0122, 0125, 0127.	20	90832	Lockwasher
	397978	Armature Group Used on Type Nos. 0021, 0113, 0115, 0123, 0124.		Note:	92268 Lockwasher Used on Type No. 0120.
8	280569	Box — Brush (Used after Code Date 8512161.)	21	94151	Screw — Hex. Head (Used after Code Date 850724011.)
	280361	Box — Brush (Used before Code Date 8512171.)		Note:	94052 Screw — Hex. Head (Used before Code Date 850725011.)
9	398575	Brush Group (Includes Brush Holders and Retainers) (Used after Code Date 8512161.)	24	398135	Switch — Starter
		For Retainers Only Order Part No. 399187.	25	280594	Switch — Key
	395467	Brush Group (Includes Brush Holders) (Used before Code Date 8512171.)	26	280081	Housing — Socket
10	395478	Lead Group	27	398270	Cord — Power Supply
11	394777	Rectifier	28	280556	Bushing — Cord
12	398440	End Cap — Brush (Used after Code Date 8512161.)	29	223555	Bracket — Bushing Note: 223615 Bracket — Strain Relief Used on Type Nos. 0125, 0126
			30	93991	Nut Used on Type Nos. 0122, 0125.
			31	399192	Control Box Group (12 Amp)
			32	280593	Key Set (includes 2 Keys)

748003



8551-3

Assemblies include all parts shown in frames.

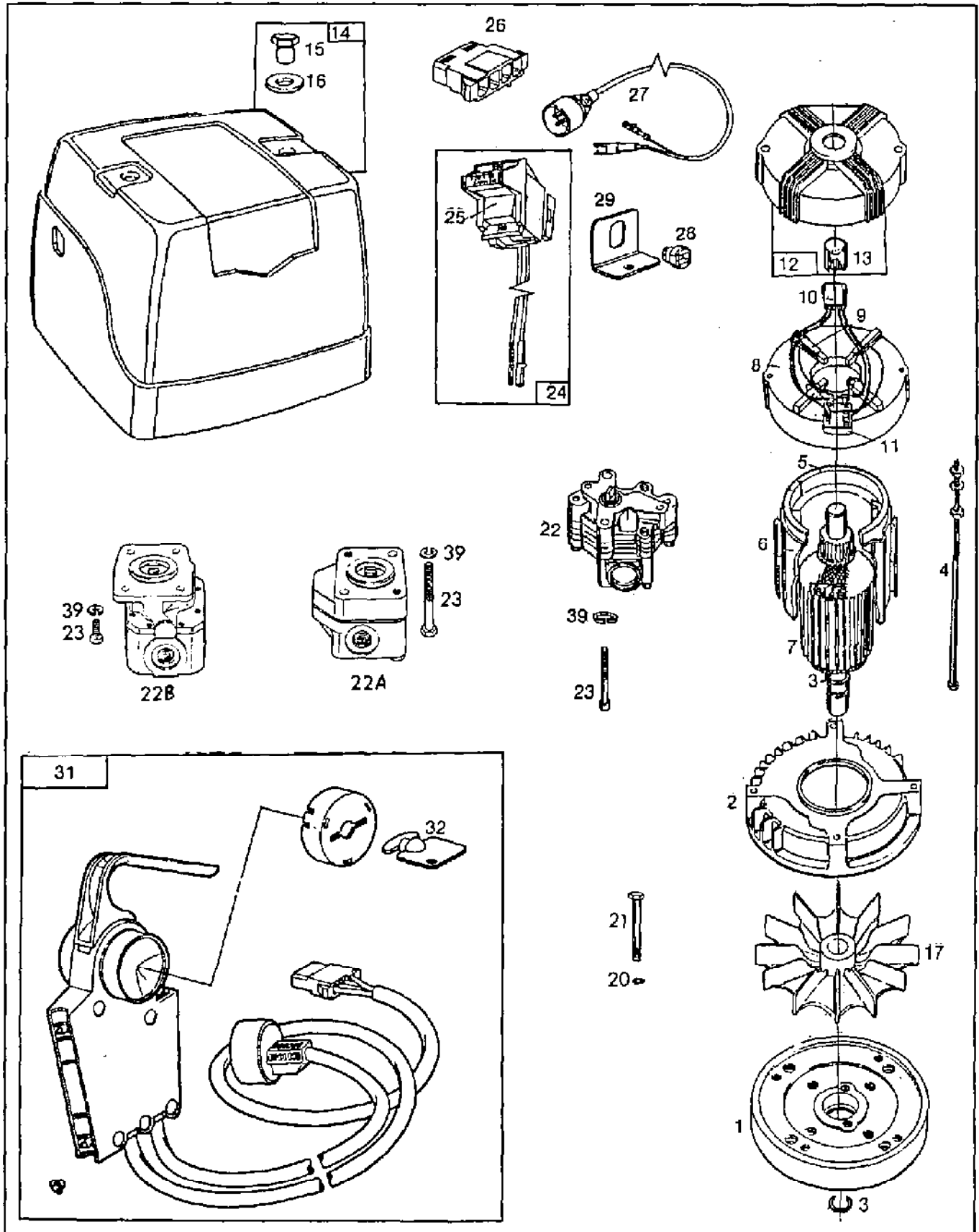
67

PARTS LIST FOR MODEL 748003

748003

REF. NO.	PART NO.	DESCRIPTION	REF. NO.	PART NO.	DESCRIPTION
2	397666	End Cap — Drive		395467	Brush Group (Includes Brush Holders) (Used before Code Date 8512171.)
3	395477	Ring Set — Retaining	10	395478	Lead Group
4	395471	Bolt — Thru (Includes Two Sets)	11	394777	Rectifier
5	394750	Housing Assembly	12	398440	End Cap — Brush (Used after Code Date 8512161.)
6	395468	Insulator Group — Housing		394773	End Cap — Brush (Used before Code Date 8512171.)
7	397979	Armature Group Used on Type Nos. 0021, 0112, 0120.	13	394769	Bearing — Needle
	398856	Armature Group Used on Type Nos. 0020, 0118.	14	398267	Cover Group — Motor (Includes Hardware)
8	280569	Box — Brush (Used after Code Date 8512161.)	15	231298	Nut — Hex
	280361	Box — Brush (Used before Code Date 8512171.)	16	93852	Washer
9	398575	Brush Group (Includes Brush Holders and Retainers) (Used after Code Date 8512161.) For Retainers Only Order Part No. 399187.	17	223461	Fan Used on Type Nos. 0020, 0021, 0112, 0118, 0120.
			31	399192	Control Box Group (12 Amp)
			32	280593	Key Set (includes 2 Keys)

748004



8551-4

Assemblies include all parts shown in frames.

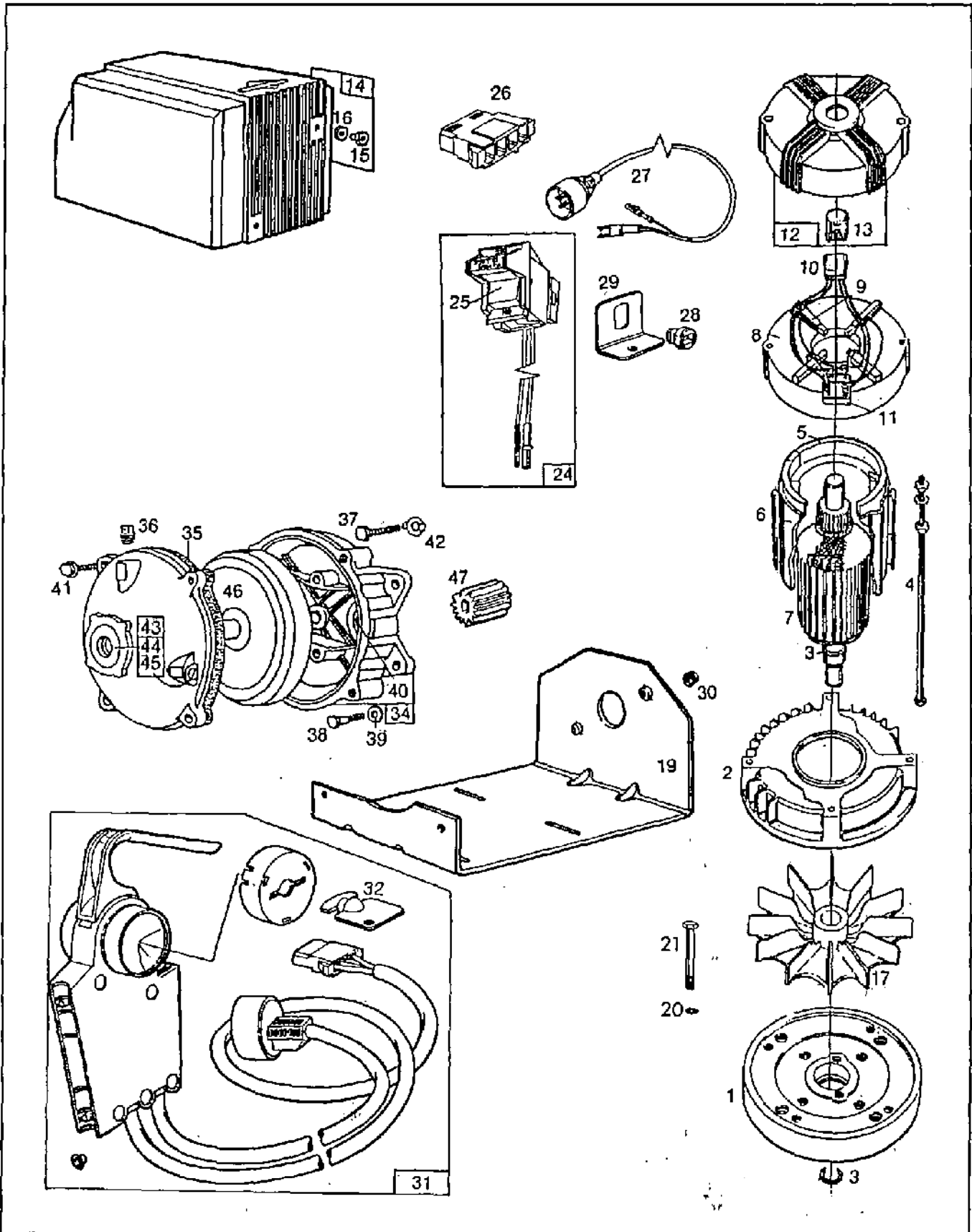
67

PARTS LIST FOR MODEL 748004

748004

REF. NO.	PART NO.	DESCRIPTION	REF. NO.	PART NO.	DESCRIPTION
1	399578	Bearing Housing Assembly Note: 399354 Bearing Housing Assembly Used on Type Nos. 0020, 0112, 0121. (Used after Code Date 850724011.) 397662 Bearing Housing Assembly Used on Type Nos. 0020, 0112. (Used before Code Date 850725011.)	15	231298	Nut -- Hex
2	213119	Housing -- Fan (Used after Code Date 850724011.) Note: 212888 Housing -- Fan (Used before Code Date 850725011.)	16	93852	Washer
3	399809	Ring Set -- Retaining	17	280530	Fan
4	395471	Bolt--Thru (Includes Two Sets)	20	90832	Lockwasher
5	394750	Housing Assembly	21	94151	Screw -- Hex. Head (Used after Code Date 850724011.) Note: 94052 Screw -- Hex. Head (Used before Code Date 850725011.)
6	395468	Insulator Group -- Housing	22	397793	Pump -- Hydraulic Used on Type Nos. 0020, 0112, 0121.
7	399804	Armature Group Used on Type Nos. 0113, 0114, 0115, 0116, 0117, 0118, 0119, 0120.	22A	399566	Pump -- Hydraulic Used on Type No. 0113.
	397978	Armature Group Used on Type Nos. 0020, 0112, 0121.		399567	Pump -- Hydraulic Used on Type No. 0114.
8	280569	Box -- Brush (Used after Code Date 8512161.)		399568	Pump -- Hydraulic Used on Type No. 0115.
	280361	Box -- Brush (Used before Code Date 8512171.)		399569	Pump -- Hydraulic Used on Type No. 0120.
9	398575	Brush Group (Includes Brush Holders and Retainers) (Used after Code Date 8512161.) For Retainers Only Order Part No. 399187.	22B	399562	Pump -- Hydraulic Used on Type No. 0116.
	395467	Brush Group (Includes Brush Holders) (Used before Code Date 8512171.)		399563	Pump -- Hydraulic Used on Type No. 0117.
10	395478	Lead Group		399564	Pump -- Hydraulic Used on Type No. 0118.
11	394777	Rectifier		399565	Pump -- Hydraulic Used on Type No. 0119.
12	398440	End Cap -- Brush (Used after Code Date 8512161.)	23	94134	Screw -- Socket Head Used on Type Nos. 0020, 0112.
	394773	End Cap -- Brush (Used after Code Date 8512171.)		94207	Screw -- Hex. Head Used on Type Nos. 0113, 0114.
13	394769	Bearing -- Needle		94208	Screw -- Hex. Head Used on Type No. 0115.
14	490182	Cover Group -- Motor (Vertical Mount) (Includes Hardware) Note: 399100 Cover Group -- Motor (Includes Hardware) Horizontal Mount Optional		94205	Screw -- Hex. Head Used on Type Nos. 0116, 0117, 0118, 0119.
				94209	Screw -- Hex. Head Used on Type No. 0120.
			24	398135	Switch -- Starter
			25	280594	Switch -- Key
			26	280081	Housing -- Socket
			27	398270	Cord -- Power Supply
			28	280556	Bushing -- Cord
			29	223555	Bracket -- Bushing
			31	399192	Control Box Group (12 Amp)
			32	280593	Key Set (includes 2 Keys)
			39	90366	Lockwasher (Note: Used on all Type Nos. Except 0020, 0112)

748005



8551-5

Assemblies include all parts shown in frames.

67

PARTS LIST FOR MODEL 748005

748005

REF. NO.	PART NO.	DESCRIPTION	REF. NO.	PART NO.	DESCRIPTION
1	399354	Bearing Housing Assembly	15	231298	Nut — Hex
2	213119	Housing — Fan	16	93852	Washer
3	395477	Ring Set — Retaining	17	280530	Fan
4	395471	Bolt — Thru (Includes Two Sets)	19	223565	Bracket — Mounting (NEMA 56)
5	394750	Housing Assembly		Note: 223614	Bracket — Foot Mount
6	395468	Insulator Group — Housing			Used on Type No. 0121.
7	399220	Armature & Fan Group Used on Type Nos. 0112, 0120, 0121.	20	90832	Lockwasher
8	280569	Box — Brush (Used after Code Date 8512161.)	21	94151	Screw — Hex. Head
	280361	Box — Brush (Used before Code Date 8512171.)	24	398135	Switch — Starter
9	398575	Brush Group (Includes Brush Holders and Retainers (Used after Code Date 8512161.) For Retainers Only Order Part No. 399187.	25	280594	Switch — Key
	395467	Brush Group (Includes Brush Holders) (Used before Code Date 8512171.)	26	280081	Housing — Socket
10	395478	Lead Group	27	398270	Cord — Power Supply
11	394777	Rectifier	28	280556	Bushing — Cord Note: 280769 Bushing — Cord Used on Type No. 0122.
12	398440	End Cap — Brush (Used after Code Date 8512161.)	29	223555	Bracket — Bushing Note: 223615 Bracket — Bushing Used on Type No. 0122.
	394773	End Cap — Brush (Used before Code Date 8512171.)	30	93991	Nut
13	394769	Bearing — Needle	31	399192	Control Box Group (12 Amp)
14	399100	Cover Group — Motor (Includes Hardware) Horizontal Mount Used on Type Nos. 0112, 0120.	32	280593	Key Set (Includes 2 Keys)
	398142	Cover Group — Motor (Includes Hardware) Optional	34	397732	Case Assy. — Gear
	490847	Cover Group — Motor (Includes Hardware) Used on Type No. 0121.	35	27313	Gasket — Gear Case Cover
			36	92617	Plug — Breather
			37	92279	Screw — Cap Hex. Hd. 5/16-24 x 1-1/12"
			38	91541	Screw — Cap Hex. Hd. 5/16-24 x 7/8"
			39	90366	Washer — Lock 5/16 x 1/8 x 1/16"
			40	397724	Seal — Oil
			41	92747	Screw — Gear Case Mounting Sem
			42	220234	Lock — Gear Case Mtg. Screw
			43	291730	Cover Assy. — Gear Case
			44	19011	Seal — Oil
			45	93448	Plug — Oil Drain, 1/4" Pipe Thread
			46	211293	Shaft Assy. — Drive
			47	262036	Pinion

