

**748001-003, 748203**

# Illustrated Parts List Electric Motor and Controller Model Series

## 748001

TYPE NUMBERS  
0220, 0221, 0320,  
0321, 0323, 0324,  
0326, 0328,  
0332 through 0339

## 748002

TYPE NUMBERS  
0220, 0221,  
0326 through 0331

## 748003

TYPE NUMBERS  
0221, 0320, 0321

## 748203

TYPE NUMBER  
0320

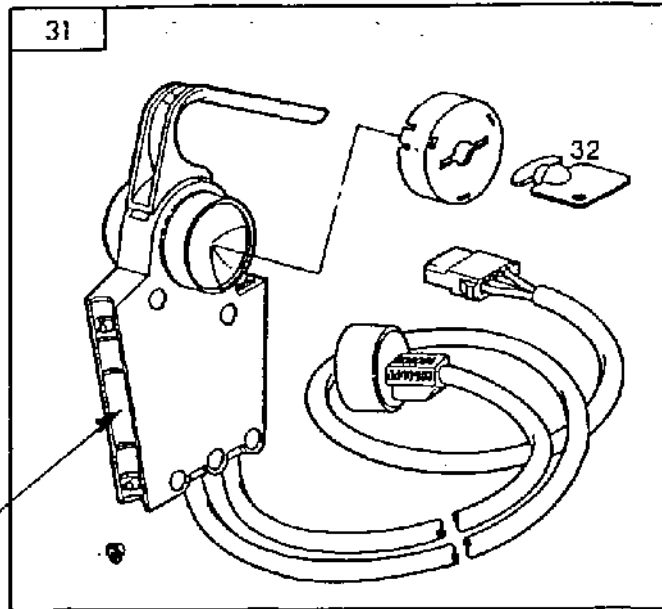
### TO FIND THE CORRECT NUMBER OF THE PART YOU NEED: FOLLOW THE INSTRUCTIONS BELOW

A. IDENTIFICATION: MOTOR—Model and type number are on label on motor end cap.

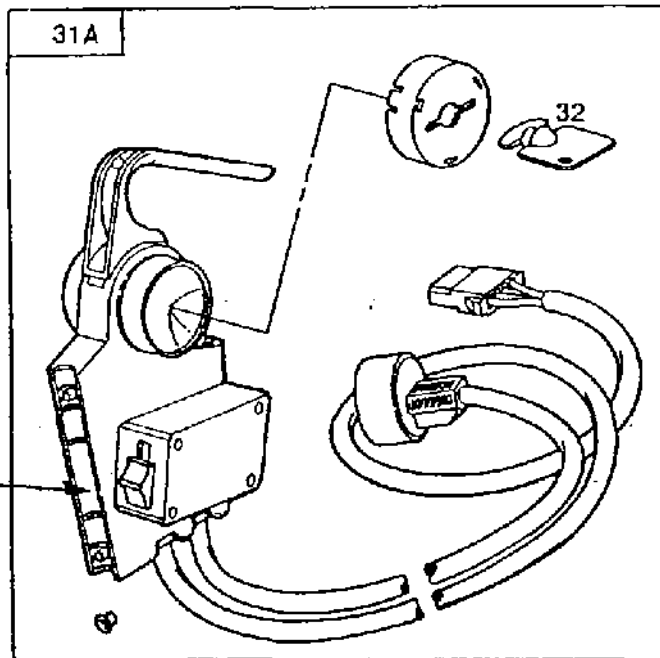
CONTROLLER—Part Number is on label on inside surface between the two mounting bosses.

- B. Refer to the illustrations and compare the original part with illustration. The number next to the illustration is the Reference Number. Assemblies include all parts shown in frames. All parts shown in assembly frames having individual reference numbers can be purchased separately.
- C. After the Reference Number has been identified, refer to the Numerical text, where Reference and Primary Part Number are listed.
- D. If your Motor Type Number does not appear after any part number listed under "Note," use the Primary Part Number.

# CONTROLLERS 748001-3 & 748203



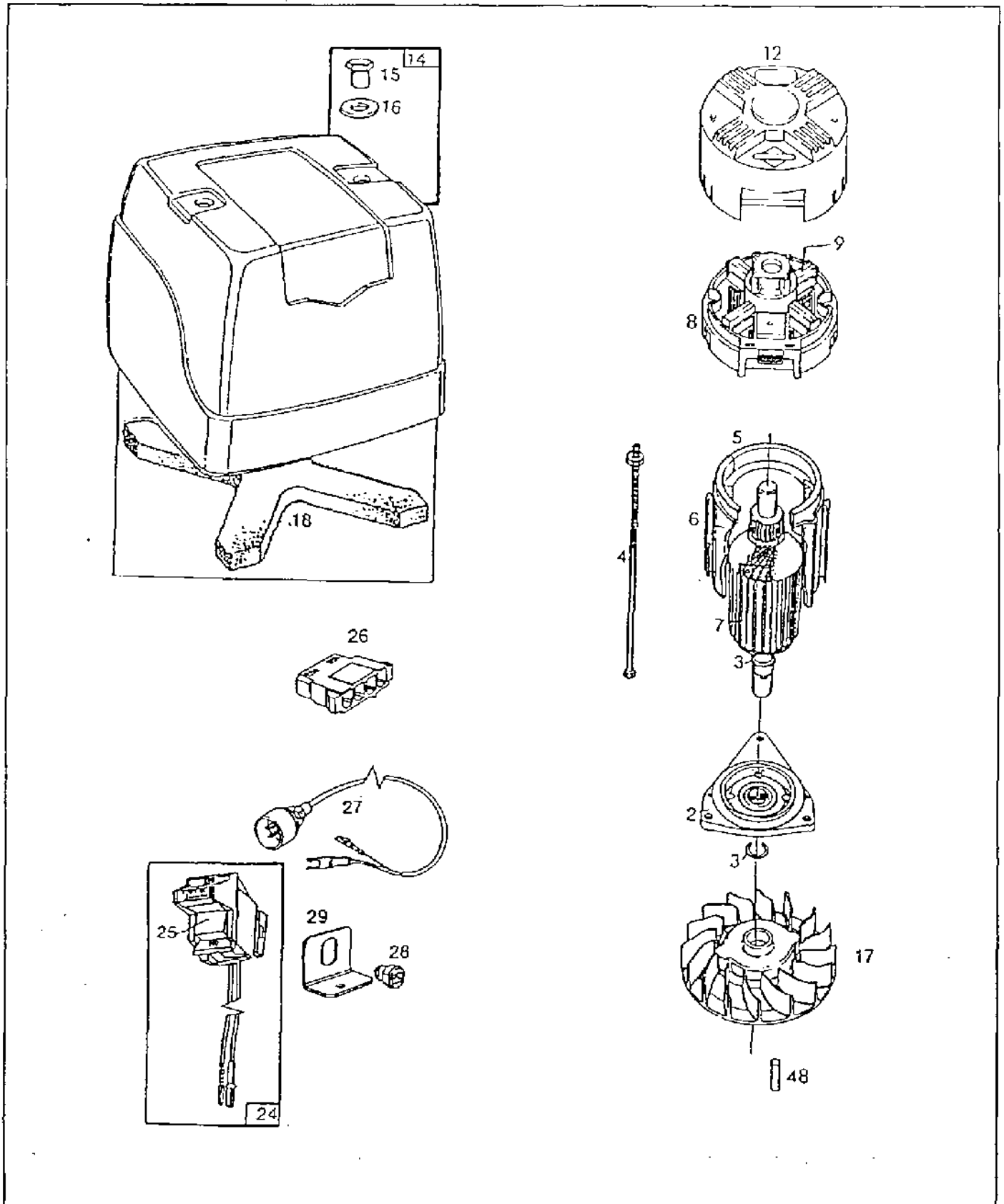
PART NUMBER  
LOCATION



## PARTS LIST FOR CONTROLLERS

REF. NO.	PART NO.	DESCRIPTION	REF. NO.	PART NO.	DESCRIPTION
31	<b>491234</b>	Control Assembly (Two Conductor) Used to Replace Part Number 490969.			398774, 398775, 398776, 398777, 398778, 399049, 399050, 399051, 399053, 493447, 493450.
	<b>399192</b>	Control Assembly (Four Conductor) Used to Replace Part Numbers 398241, 398406, 398407,	31A	<b>490250</b>	Control Assembly (Three Speed)
			32	<b>280593</b>	Key-Controller

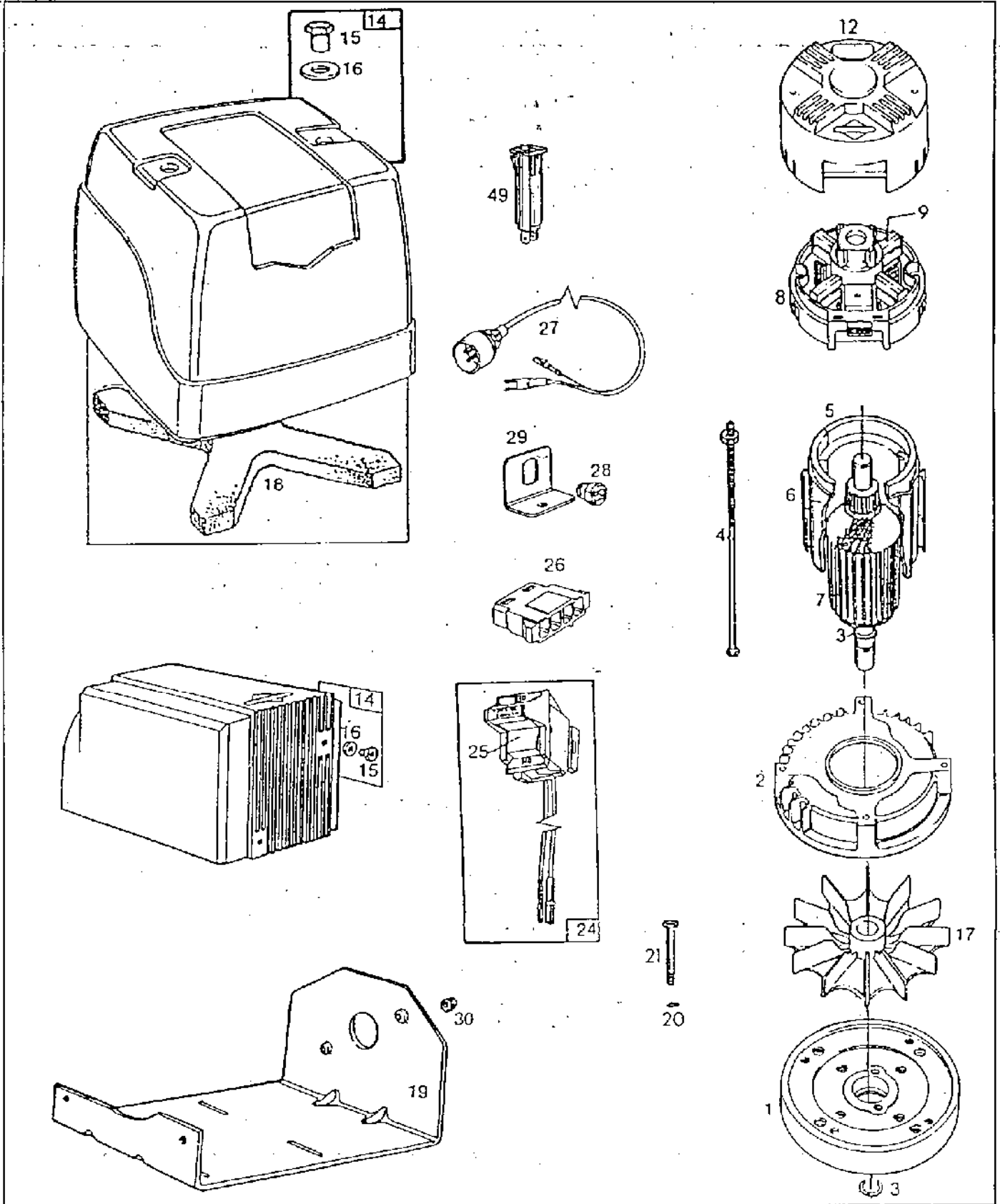
748001



## PARTS LIST FOR MODEL 748001

REF. NO.	PART NO.	DESCRIPTION	REF. NO.	PART NO.	DESCRIPTION
2	394770	End Cap-Drive		492157	Fan
3	395477	Ring Set-Retaining			Used on Type Nos. 0221, 0324.
4	490832	Bolt-Thru (Includes Two Sets)		493571	Fan
5	399995	Housing Assembly			Used on Type Nos. 0328, 0332, 0333, 0335, 0337.
6	490830	Insulator Group-Housing		494997	Fan
7	490829	Armature Group Used on Type Nos. 0220, 0320, 0321, 0323, 0324, 0326, 0328, 0332, 0333, 0334, 0335, 0336, 0338, 0339.			Used on Type No. 0326.
	490836	Armature Group Used on Type No. 0221.	18	271711	Filter
	493208	Armature Group Used on Type No. 0337.		271792	Filter
8	490833	Box-Brush			Used on Type Nos. 0220, 0323, 0326, 0328, 0332, 0333, 0334, 0335, 0336, 0337, 0338.
9	490834	Brush Set	24	398135	Switch-Starter
12	290709	End Cap-Brush	25	281221	Switch-Key (Used After Code Date 910930).
14	398267	Cover Group-Motor (Includes Hardware and Filter) Used on Type Nos. 0321, 0323, 0326, 0328, 0333, 0335, 0337, 0339.			<b>Note:</b> 280594 Switch-Key (Used Before Code Date 911001).
	397711	Cover Group-Motor (Includes Hardware and Filter) Used on Type No. 0334.	26	280081	Housing-Socket
	490958	Cover Group-Motor (Includes Hardware and Filter) Used on Type No. 0332.	27	398270	Cord-Power Supply
15	231298	Nut-Hex.	28	280769	Bushing-Cord Used on Type No. 0333.
16	93852	Washer	29	223615	Bracket-Bushing Used on Type No. 0333.
17	491389	Fan Used on Type Nos. 0220, 0320, 0321, 0334, 0338, 0339.	48	94376	Key-Square Used on Type Nos. 0220, 0320, 0321, 0323, 0328, 0332, 0333, 0334, 0335, 0336, 0337, 0338.
	491503	Fan Used on Type No. 0336.		94445	Key-Square Used on Type Nos. 0221, 0324.
				94567	Key-Square Used on Type No. 0326.

748002



9439-6

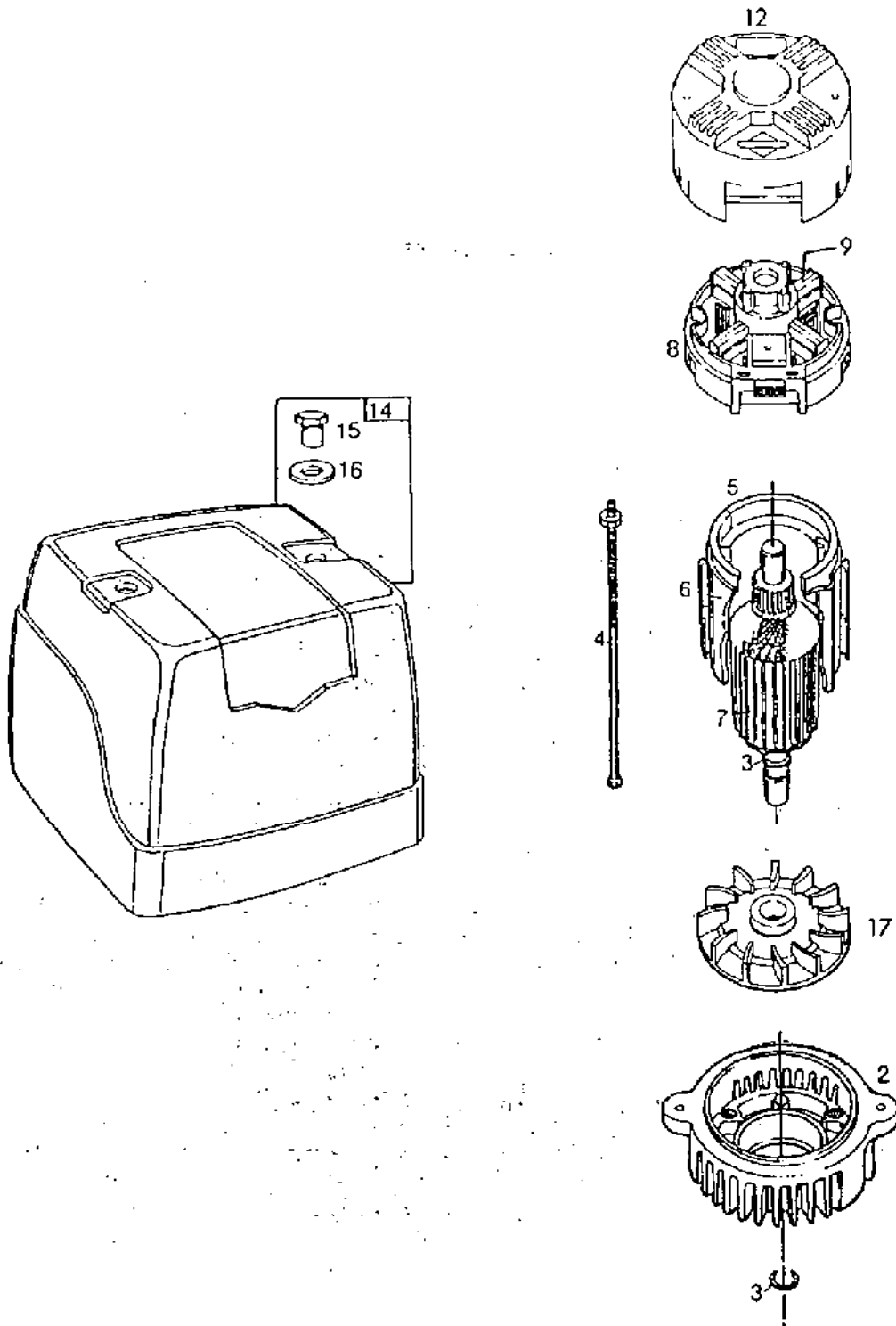
Assemblies include all parts shown in frames.

92

## PARTS LIST FOR MODEL 748002

REF. NO.	PART NO.	DESCRIPTION	REF. NO.	PART NO.	DESCRIPTION
1	399354	Housing Assembly-Bearing		494991	Cover Group-Motor (Includes Hardware and Filter) Used on Type No. 0330.
2	213119	Housing-Fan	15	231298	Nut-Hex
3	395477	Ring Set-Retaining	16	93852	Washer
4	490832	Bolt-Thru (Includes Two Sets)	17	280530	Fan
5	399995	Housing Assembly	18	271792	Filter Used on Type Nos. 0328, 0331.
6	490830	Insulator Group-Housing	19	223565	Bracket-Mounting (NEMA 56)
7	490233	Armature & Fan Group Used on Type Nos. 0220, 0326, 0327, 0328, 0329, 0330, 0331.	20	90832	Lockwasher
	490237	Armature Group Used on Type No. 0221.	21	94151	Screw-Hex. Head
8	490833	Box-Brush	24	398135	Switch Starter
9	490834	Brush Set	25	281221	Switch-Key (Used After Code Date 910930).
12	280709	End Cap-Brush		Note: 280594	Switch-Key (Used Before Code Date 911001).
14	396267	Cover Group-Motor (Includes Hardware and Filter) Used on Type No. 0328.	26	280081	Housing Socket
	399100	Cover Group-Motor (Includes Hardware, Horizontal Mount) Used on Type No. 0326.	27	398270	Cord-Power Supply
	490182	Cover Group-Motor (Includes Hardware) Used on Type No. 0327.	28	280556	Bushing-Cord
	490221	Cover Group-Motor (Includes Hardware and Filter) Used on Type No. 0331.	29	223555	Bracket-Bushing Used on Type No. 0331.
				223615	Bracket-Bushing Used on Type No. 0326.
			30	93991	Nut
			49	398355	Circuit Breaker Used on Type No. 0330.

748003

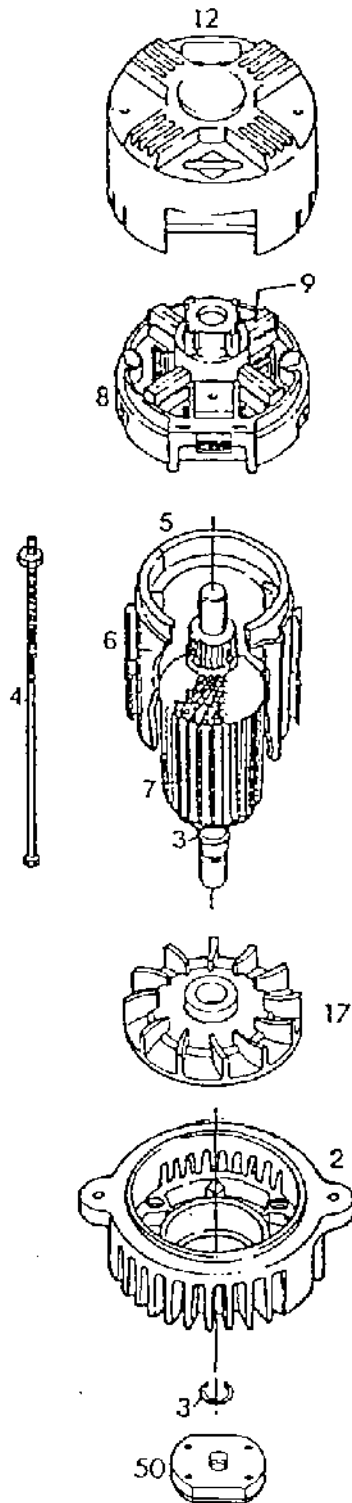
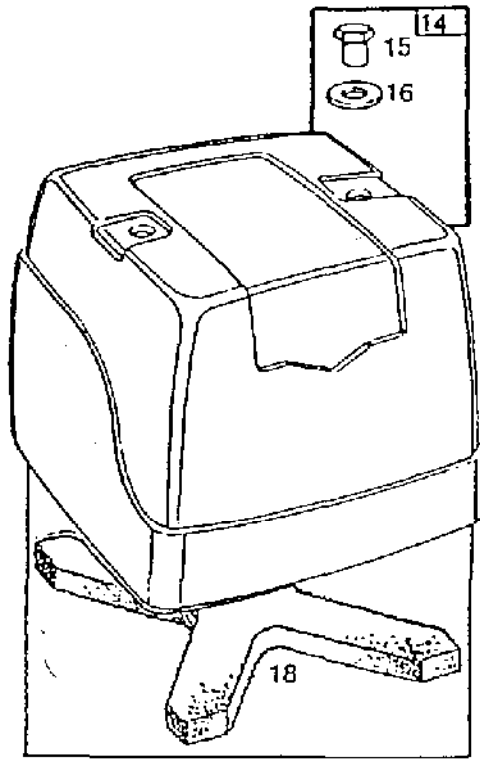




## PARTS LIST FOR MODEL 748003

REF. NO.	PART NO.	DESCRIPTION	REF. NO.	PART NO.	DESCRIPTION
2	397666	End Cap-Drive	9	490834	Brush Set
3	395477	Ring Set-Retaining	12	280709	End Cap-Brush
4	490832	Bolt-Thru (Includes Two Sets)	14	396267	Cover Group-Motor (Includes Hardware)
5	399995	Housing Assembly	15	231298	Nut-Hex
6	490830	Insulator Group-Housing	16	93852	Washer
7	490940	Armature Group Used on Type Nos. 0221, 0320, 0321.	17	280837	Fan Used on Type Nos. 0221, 0320, 0321.
8	490833	Box-Brush			

748203



## PARTS LIST FOR MODEL 748203

REF. NO.	PART NO.	DESCRIPTION	REF. NO.	PART NO.	DESCRIPTION
2	397666	End Cap-Drive	12	280709	End Cap-Brush
3	395477	Ring Set-Retaining	14	396267	Cover Group-Motor (Includes Hardware)
4	490832	Bolt-Thru (Includes Two Sets)	15	231298	Nut-Hex
5	399995	Housing Assembly	16	93852	Washer
6	490830	Insulator Group-Housing	17	280837	Fan
7	491495	Armature Group	18	271792	Filter
8	490833	Box-Brush	50	490845	Clutch Assembly
9	490834	Brush Set			



**BRIGGS & STRATTON**