

**81200 to 81299**

# Illustrated Parts List

## Industrial/Commercial

### Model Series

# 81200 to 81299

TYPE NUMBERS

8044, 8111

8124 through 8130

**TO FIND**

**THE CORRECT NUMBER OF THE PART YOU NEED:**

**FOLLOW THE INSTRUCTIONS BELOW**

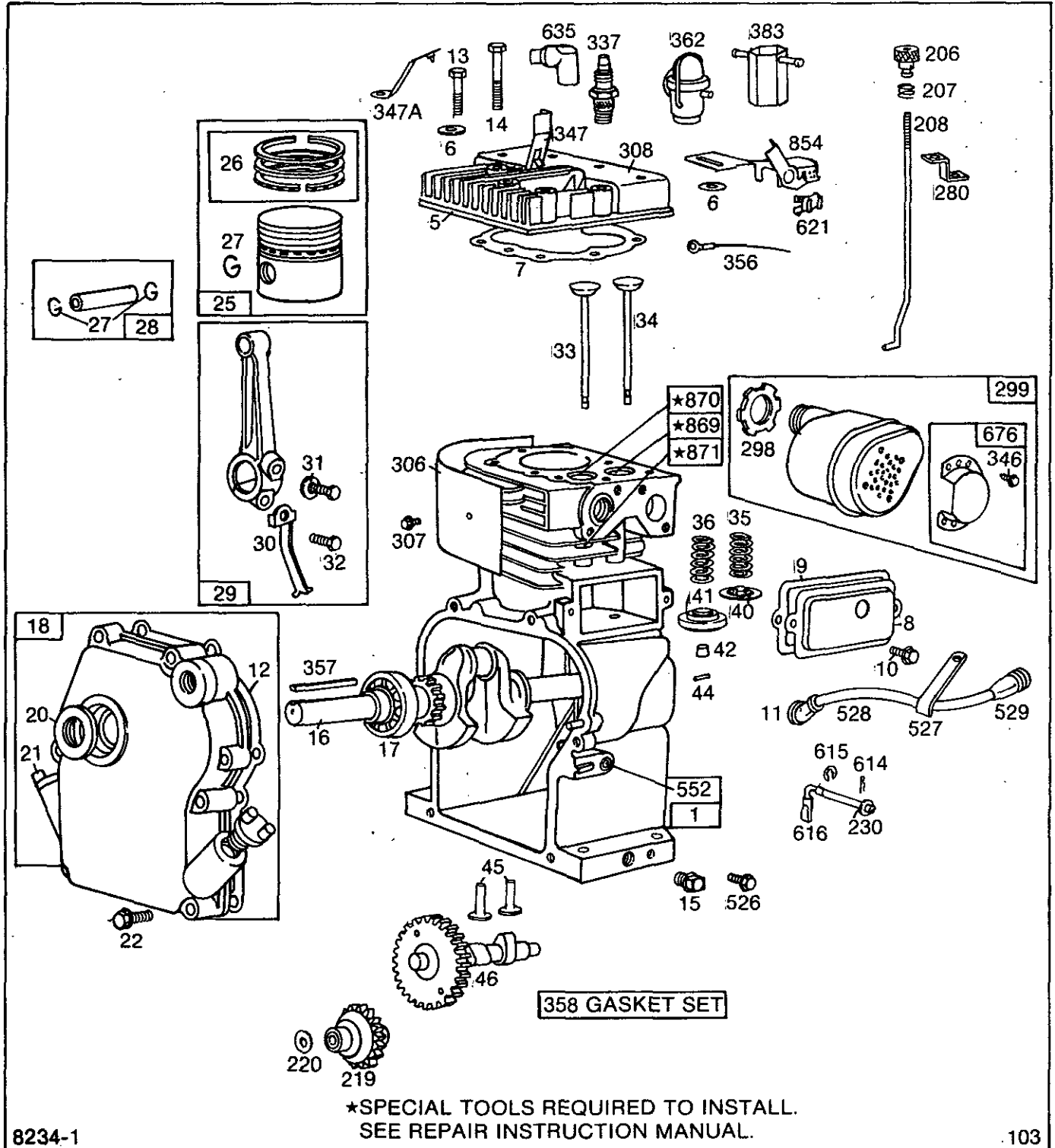
- A. Refer to Engine Model, Type and Code Number that is stamped on the blower housing of engine. Engine type numbers such as 012301 are listed herein only as 0123. The two digits (01 or 02, etc.) to the right of the space are not needed for parts identification. Then use the Illustrated Parts List covering the Model Series.
- B. Refer to Illustrated Parts section and compare the old part with illustration. The number on the illustration is the Reference Number. Assemblies include all parts shown in frames. All parts shown in assembly frames on which individual reference numbers are given can be purchased separately.
- C. After the Reference Number has been identified, refer to the Numerical Parts List, where Reference and Master Part Number are listed. **THE MASTER PART IS USED ON ALL TYPE NUMBERS EXCEPT THOSE TYPE NUMBERS UNDER "NOTE"**.
- D. If a "Note" appears below the Master Part Number, this means that this part differs from the Master Part for certain types. If the Type number is listed under "Note", order the part referred to.
- E. If the Engine Type Number does not appear after any part number listed under "Note", use the Master Part Number.
- F. For Type Numbers higher than those covered by this book, please refer to the factory if you are unable to identify the part by comparison.

PRINTED IN U.S.A.

COPYRIGHT ©



# 81200 to 81299

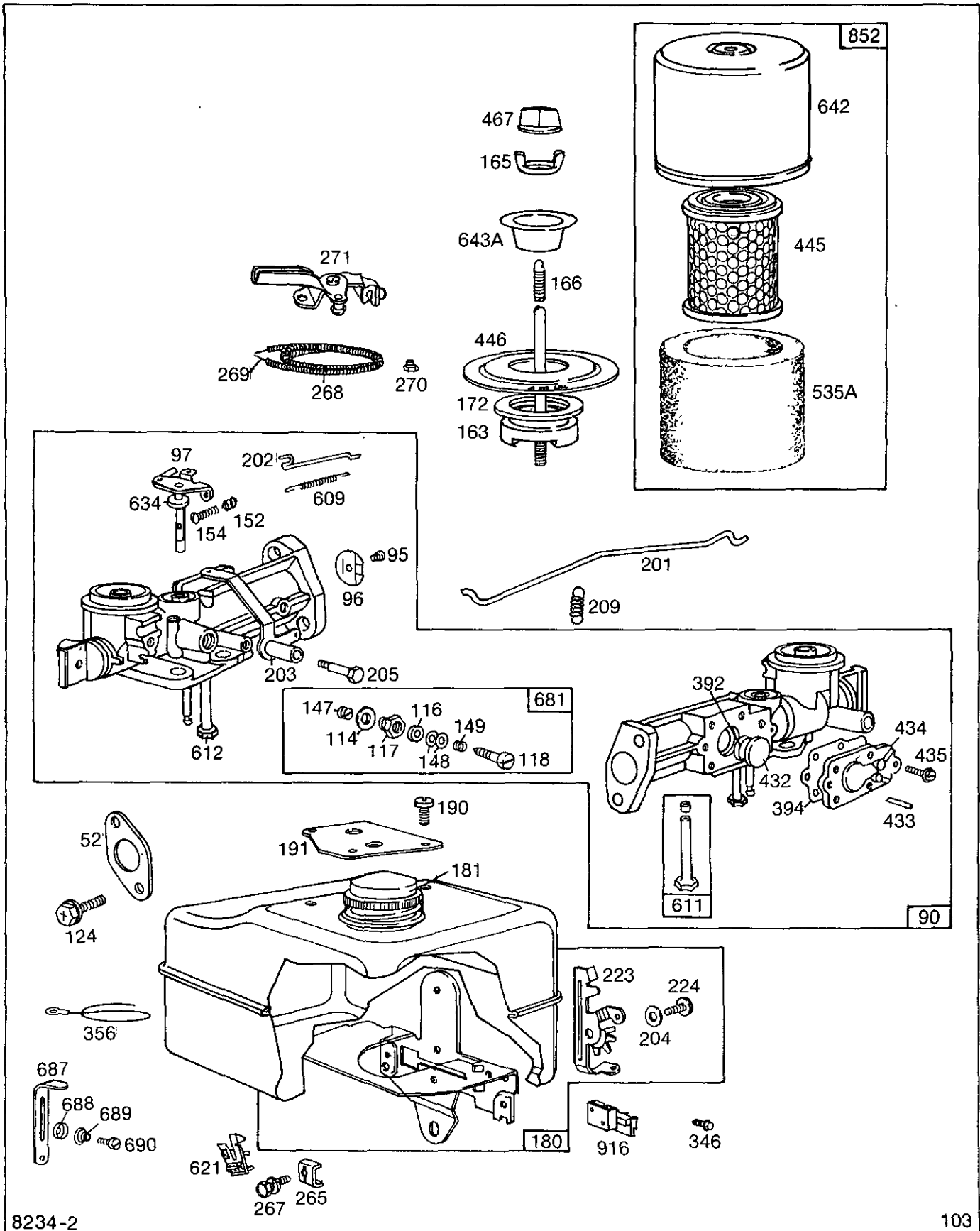


8234-1

103

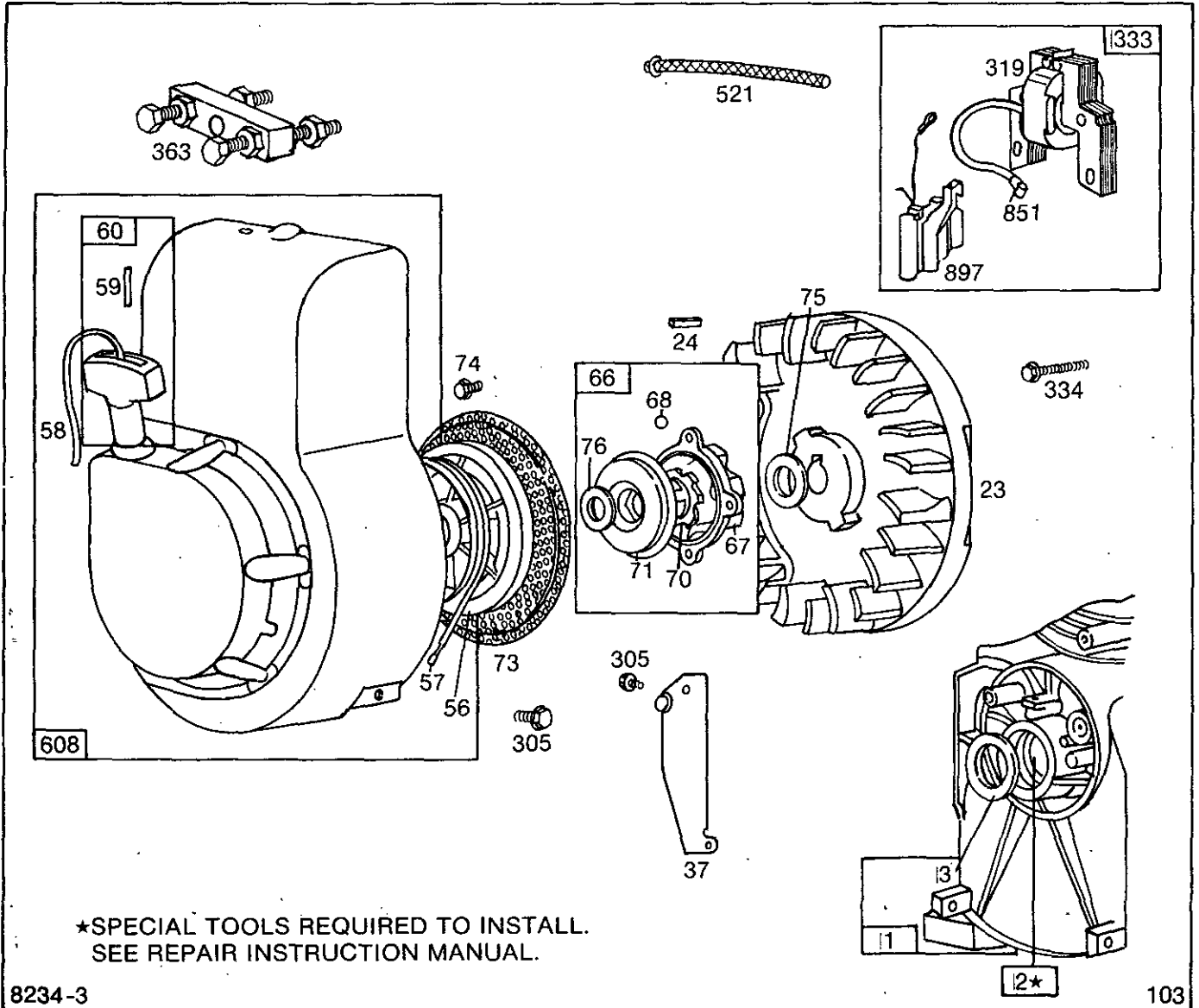
Assemblies include all parts shown in frames.

# 81200 to 81299



Assemblies include all parts shown in frames.

# 81200 to 81299



8234-3

103

Assemblies include all parts shown in frames.

# 81200 to 81299

REF. NO.	PART NO.	DESCRIPTION	REF. NO.	PART NO.	DESCRIPTION	REF. NO.	PART NO.	DESCRIPTION	
1	395567	Cylinder Assembly	22	93032	Screw—Crankcase Cover Mounting Sem	40	93312	Retainer—Intake Valve Spring	
2	231271	Bearing	23	296884	Flywheel—Magneto	41	292259	Rotocap—Exhaust Valve	
	<b>Note:</b>	Requires special tools for installation.		<b>Note:</b>	395653 Flywheel—Magneto	42	230127	Retainer—Exhaust Valve Rotocap	
3	299819	Seal—Oil			Used on Type No. 8126.	44	230126	Pin—Exhaust Valve Rotocap Retainer	
5	210812	Head—Cylinder	24	222698	Key—Flywheel	45	230173	Tappet—Valve	
6	22963	Washer	25	295455	Piston Assembly—Std.	46	394800	Gear—Cam	
7	*27670	Gasket—Cylinder Head		295456	Piston Assembly—.010" O.S.	52	*27355	Gasket—Intake Elbow Mounting (2 used)	
8	294178	Breather—Valve Chamber		295457	Piston Assembly—.020" O.S.	56	280117	Pulley—Rewind Starter	
9	*27549	Gasket—Valve Cover		295458	Piston Assembly—.030" O.S.	57	294303	Spring—Rewind Starter	
10	93394	Screw—Breather Mounting Sem				58	66734	Rope—Starter—48-5/8"	
11	66578	Grommet—Breather Tube				59	230228	Pin—Starter Grip	
12	270833	Gasket—Crankcase—.015" thick (Standard)				60	393152	Grip—Starter Rope	
	*270895	Gasket—Crankcase—.005" thick		<b>MODEL 81200 SERIES RING SETS:</b>			66	394558	Clutch Assembly—Rewind Starter
	*270896	Gasket—Crankcase—.009" thick		<b>Note:</b>	For Chrome Piston Ring Set—Standard Size—Order Part No. 297201.	67	394897	Housing—Starter Clutch	
13	93111	Screw—Cylinder Head (1-15/16" long)	26	295657	Ring Set—Std. Piston	68	63770	Ball—Clutch	
	<b>Note:</b>	93583 Stud—Cylinder Head (1)		295658	Ring Set—.010" O.S. Piston	70	298799	Ratchet—Rewind Starter	
		22963 Washer		295659	Ring Set—.020" O.S. Piston	71	221653	Washer—Clutch Retainer	
		Used on Type Nos. 8125, 8126, 8128.		295660	Ring Set—.030" O.S. Piston	73	221661	Screen—Rotating	
14	93113	Screw—Cylinder Head (2-5/16" long)	27	26026	Lock—Piston Pin	74	93490	Screw—Rotating Screen Mounting Sem	
	<b>Note:</b>	93583 Stud—Cylinder Head	28	298909	Pin Assembly—Piston—Standard	75	220865	Washer—Spring	
		22963 Washer		298908	Pin Assembly—Piston—.005" O.S.	76	68238	Washer—Ratchet Sealing	
		Used on Type Nos. 8125, 8126, 8128.	29	294367	Rod Assembly—Connecting	90	394828	Carburetor Assembly (For 2 Quart Tank)	
15	91249	Plug—Pipe, 1/4" Std., Square Head		<b>Note:</b>	For Connecting Rod with .020" Undersize Crankpin Bore—Order No. 296079.		<b>Note:</b>	394878 Carburetor Assembly (for 3 Quart Tank) Used on Type Nos. 8127, 8128.	
16	260932	Crankshaft	30	220670	Dipper—Connecting Rod	95	93499	Screw—Throttle Valve Mounting Sem	
	<b>Note:</b>	260113 Crankshaft Used on Type Nos. 8044, 8124, 8127, 8130.	31	222282	Washer—Connecting Rod Screw	96	211203	Valve—Throttle	
		260187 Crankshaft Used on Type No. 8129.	32	92296	Screw—Connecting Rod	97	297468	Shaft and Lever—Throttle	
17	99158	Bearing—Ball	33	260443	Valve—Exhaust (with hole in stem) (Cobalite)	114	66594	Gasket—Needle Valve Nut	
18	395259	Cover Assembly—Crankcase	34	296677	Valve—Intake (Grooved) Stem—Includes Retainer No. 93312)	116	65978	Packing—Needle Valve	
		Used on Model 81231, 81232 Series.	35	260552	Spring—Intake Valve	117	230590	Nut—Needle Valve	
20	393812	Seal—Oil	36	26826	Spring—Exhaust Valve	118	23433	Valve—Needle	
21	66768	Plug—Oil Filler	37	220971	Guard—Flywheel	124	93357	Screw—Hex. Hd.	
						147	230591	Seat—Needle Valve	
						148	22235	Washer—Needle Valve (2)	

\*Included in Gasket Set—  
Part No. 297275.

# 81200 to 81299

REF. NO.	PART NO.	DESCRIPTION	REF. NO.	PART NO.	DESCRIPTION	REF. NO.	PART NO.	DESCRIPTION
149	26336	Spring—Needle Valve	269	26099	Wire—Control—54" long	392	260455	Spring—Fuel Pump Diaphragm
152	260575	Spring—Throttle Adjustment		<b>Note:</b>	If longer wire is needed, specify length in inches; if shorter wire is needed, order No. 26099 and cut to required length.	394	270026	Diaphragm
163	27660	Gasket—Air Cleaner Mounting	270	63426	Locknut—Control Wire Casing	432	221377	Cap—Spring
165	93856	Wing Nut	271	290568	Lever Assy.—Control	433	93265	Pin—Diaphragm Cover
166	231176	Stud—Air Cleaner	280	221384	Bracket	434	210959	Cover—Diaphragm
172	271077	Spacer—Air Cleaner	298	220859	Locknut—Muffler	435	93141	Screw—Diaphragm Cover
180	394821	Tank Assembly—Fuel (2 Quart)	299	392811	Muffler—Exhaust (Lo-Tone)	445	392308	Cartridge—Air Cleaner
	<b>Note:</b>	394825 Tank Assy.—Fuel (3 Quart) Used on Type Nos. 8127, 8128.	305	93158	Screw—Sem	446	222844	Base—Air Cleaner
181	298425	Cap—Fuel Tank	306	220478	Shield—Cylinder	467	212293	Knob—Air Cleaner
	<b>Note:</b>	391494 Cap—Fuel Tank (Chrome)	307	93490	Screw—Cylinder Shield Mounting Sem	521	237973	Shielding—Ignition Cable
190	93440	Screw—Fuel Tank Mounting Sem	308	220581	Cover—Cylinder Head	523	69345	Cap—Oil Filler
191	*271592	Gasket—Fuel Tank Mounting	319	395488	Armature Assembly (Less Trigger Coil)		<b>Note:</b>	297357 Cap—Oil Filler Used on Type No. 8044.
201	261590	Link—Governor	333	395489	Armature Group	524	65304	Gasket—Oil Filler Cap
202	260678	Link—Throttle	334	93381	Screw—Armature Mounting Sem	525	91258	Nipple—Oil Filler (2-1/2" Lg.)
203	394670	Crank—Bell	337	298809	Plug—Spark (1-1/2" High—37-42 M.M.)		<b>Note:</b>	All Nipples use 394884 Oil Filler Adaptor
204	222962	Bushing—Governor Lever		<b>Note:</b>	29693 Plug—Spark (2" High—51 M.M.)	526	93343	Screw—Tank Bracket Mounting Sem
205	93838	Screw—Bell Crank			293918 Plug—Spark (Resistor Type) (1-1/2" High—37 M.M.)	527	221279	Clamp—Breather Tube
206	231266	Nut—Control Rod	346	93705	Screw—Sem	528	230634	Tube—Breather
207	26855	Spring—Control Rod	347	220884	Switch—Stop (For 1-1/2" High—37 & 42 M.M. Spark Plug)	529	67608	Grommet—Breather Tube
208	261653	Rod—Control				535	270979	Element—Air Cleaner
209	261130	Spring—Governor	347A	298926	Switch—Stop (For 1-1/2" High—37-42 M.M. Spark Plug)	552	231079	Bushing—Governor Shaft
209	391737	Gear—Governor				562	92613	Bolt—Governor Lever
220	221551	Washer—Thrust	356	391115	Wire—Ground	592	231082	Nut—Hex—10-24
224	93411	Screw—Governor Lever Mounting Sem		<b>Note:</b>	299500 Wire—Ground Used on Type No. 8130.	592	231082	Nut—Hex—10-24
227	394541	Lever Assy.—Governor	357	91539	Key—3/16" Square	608	294259	Starter Assy.—Rewind (10 o'clock)
230	222450	Washer—Governor Lever	358	297275	Gasket Set		<b>Note:</b>	294337 Starter Assy.—Rewind (12 o'clock) Used on Type Nos. 8044, 8124, 8125, 8126, 8127, 8128, 8130.
265	221535	Clamp—Casing	362	89742	Shield—Spark Plug	609	260564	Spring—Throttle Link
267	93496	Screw—Sem	363	19069	Puller—Flywheel (Optional Accessory)	611	391813	Fuel Pipe and Clip Assembly
268	66986	Casing—Control Wire—48" long	383	89838	Wrench—Spark Plug	612	296811	Pipe—Fuel (1-5/8" long) Plastic
	<b>Note:</b>	If longer casing is needed, specify length in inches; if a shorter casing is needed, Order No. 66986 and cut to required length.				614	93306	Cotter—Hair Pin
						615	93307	Retainer—E-Ring
						616	231077	Crank—Governor
						621	297472	Switch—Stop
						634	270167	Washer—Throttle Shaft (Felt)

\*Included in Gasket Set—Part No. 297275.

## 81200 to 81299

REF. NO.	PART NO.	DESCRIPTION	REF. NO.	PART NO.	DESCRIPTION	REF. NO.	PART NO.	DESCRIPTION
635	66538	Elbow—Spark Plug	688	221766	Cap—Friction Spring	869	210879	Seat—Intake Valve (Standard)
642	222626	Cover—Air Cleaner	689	260847	Spring—Friction			
643	222845	Cup—Air Cleaner	690	92484	Screw—Machine, Fil. Hd.—10-32 x 1/2"	870	211291	Seat—Exhaust Valve (Standard)
676	393760	Deflector—Exhaust						
	<b>Note:</b>	392190 Arrestor—Spark	851	221798	Terminal—Ignition Cable			<b>Note:</b> For Options see Repair Manual
		Used on Type No. 8128.	852	392368	Cleaner Assy.—Air	871	63709	Guide—Exhaust Valve
681	299060	Needle Valve Kit	854	392884	Bracket Assy.—Stop Switch	897	394970	Trigger Coil Assembly
687	390690	Slide—Friction Control				916	280321	Gear Rack—Governor