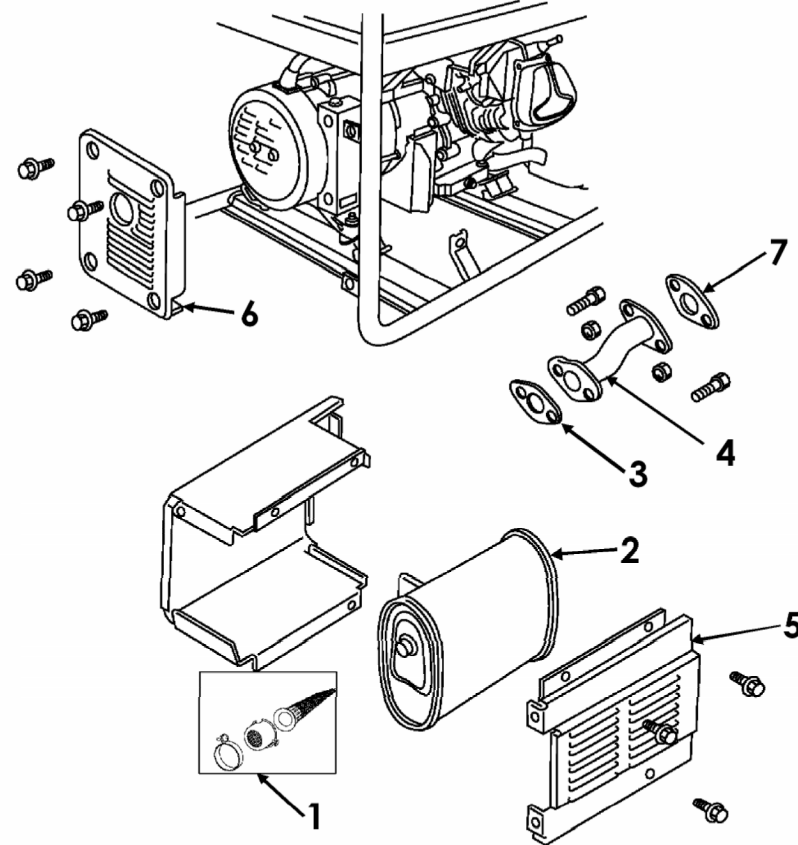



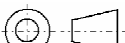
1. APPLICABLE DOCUMENTS:
ASME Y14.5M-1994, DIMENSIONING AND TOLERANCING
ASME Y14.38-1999, ABBREVIATIONS AND ACRONYMS

2. MATERIAL:
HEAT TREATMENT:
SURFACE FINISH:
COATING:
CLEANLINESS:
APPROX WEIGHT OF FINISHED PART:

3. SHEET TOLERANCE UNLESS OTHERWISE SPECIFIED:
X = +/- 0.8mm X.X = +/- 0.3mm X.XX = +/- 0.13mm



7	101040	A	GASKET - CYLINDER HEAD TO EXHAUST PIPE	1	ea
6	100945	A	LOUVERED HEAT SHIELD (EXHAUST SIDE)	1	ea
5	100944	A	LOUVERED HEAT SHIELD (SIDE)	1	ea
4	100943	A	EXHAUST PIPE	1	ea
3	100939	A	GASKET - EXHAUST PIPE TO MUFFLER	1	ea
2	100936	A	MUFFLER, 337cc	1	ea
1	100843	A	SPARK ARRESTOR	1	ea
ITEM NO.	PART NO.	REV.	DESCRIPTION	QTY	UM

 NORTHSHORE POWER SYSTEMS, LLC		NORTHSHORE POWER SYSTEMS, LLC NSPSYSTEMS.COM		A	
		PROPRIETARY AND CONFIDENTIAL THE INFORMATION CONTAINED IN THIS DRAWING IS CONFIDENTIAL AND IS THE SOLE PROPERTY OF NORTHSHORE POWER SYSTEMS. ANY REPRODUCTION IN PART OR AS A WHOLE WITHOUT THE WRITTEN PERMISSION OF NORTHSHORE POWER SYSTEMS IS PROHIBITED.			
UNLESS OTHERWISE SPECIFIED: THIRD ANGLE PROJECTION:		PART NAME:		EXHAUST SYSTEM PARTS HW5500E	
 INTERPRET GEOMETRIC TOLERANCING PER ASME Y14.5M-1994 DO NOT SCALE DRAWING					
DRAWN BY	RPY	2008-07-07	SIZE	101383A	
CHECKED BY			B		
RELEASED BY					
			SCALE: 1:1	METRIC	SHEET 1 OF 1