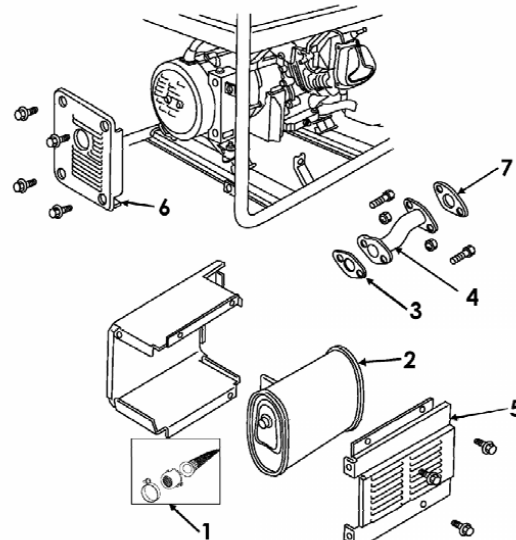


NOTES:

1. APPLICABLE DOCUMENTS:  
ASME Y14.5M-1994, DIMENSIONING AND TOLERANCING  
ASME Y14.38-1999, ABBREVIATIONS AND ACRONYMS

2. MATERIAL:  
HEAT TREATMENT:  
SURFACE FINISH:  
COATING:  
CLEANLINESS:  
APPROX WEIGHT OF FINISHED PART:

3. SHEET TOLERANCE UNLESS OTHERWISE SPECIFIED:  
X = +/- 0.8mm X.X = +/- 0.3mm X.XX = +/- 0.13mm



7	101040	A	GASKET - CYLINDER HEAD TO EXHAUST PIPE	1	ea
6	100945	A	LOUVERED HEAT SHIELD (EXHAUST SIDE)	1	ea
5	100944	A	LOUVERED HEAT SHIELD (SIDE)	1	ea
4	100943	A	EXHAUST PIPE	1	ea
3	100939	A	GASKET - EXHAUST PIPE TO MUFFLER	1	ea
2	100938	A	MUFFLER, 420cc	1	ea
1	100843	A	SPARK ARRESTOR	1	ea
ITEM NO.	PART NO.	REV.	DESCRIPTION	QTY	UM



UNLESS OTHERWISE SPECIFIED:  
THIRD ANGLE PROJECTION:



INTERPRET GEOMETRIC  
TOLERANCING PER  
ASME Y14.5M-1994  
DO NOT SCALE DRAWING

DRAWN BY	RPY	2008-07-07
CHECKED BY		
RELEASED BY		

NORTHSHORE POWER SYSTEMS, LLC  
NSPSYSTEMS.COM

PROPRIETARY AND CONFIDENTIAL

THE INFORMATION CONTAINED IN THIS DRAWING IS CONFIDENTIAL  
AND IS THE SOLE PROPERTY OF NORTHSHORE POWER SYSTEMS.  
ANY REPRODUCTION IN PART OR AS A WHOLE WITHOUT THE WRITTEN  
PERMISSION OF NORTHSHORE POWER SYSTEMS IS PROHIBITED.

PART NAME

EXHAUST SYSTEM PARTS HW7500E

SIZE

PART NO.

B

101385A

SCALE: 1:1

METRIC

SHEET 1 OF 1