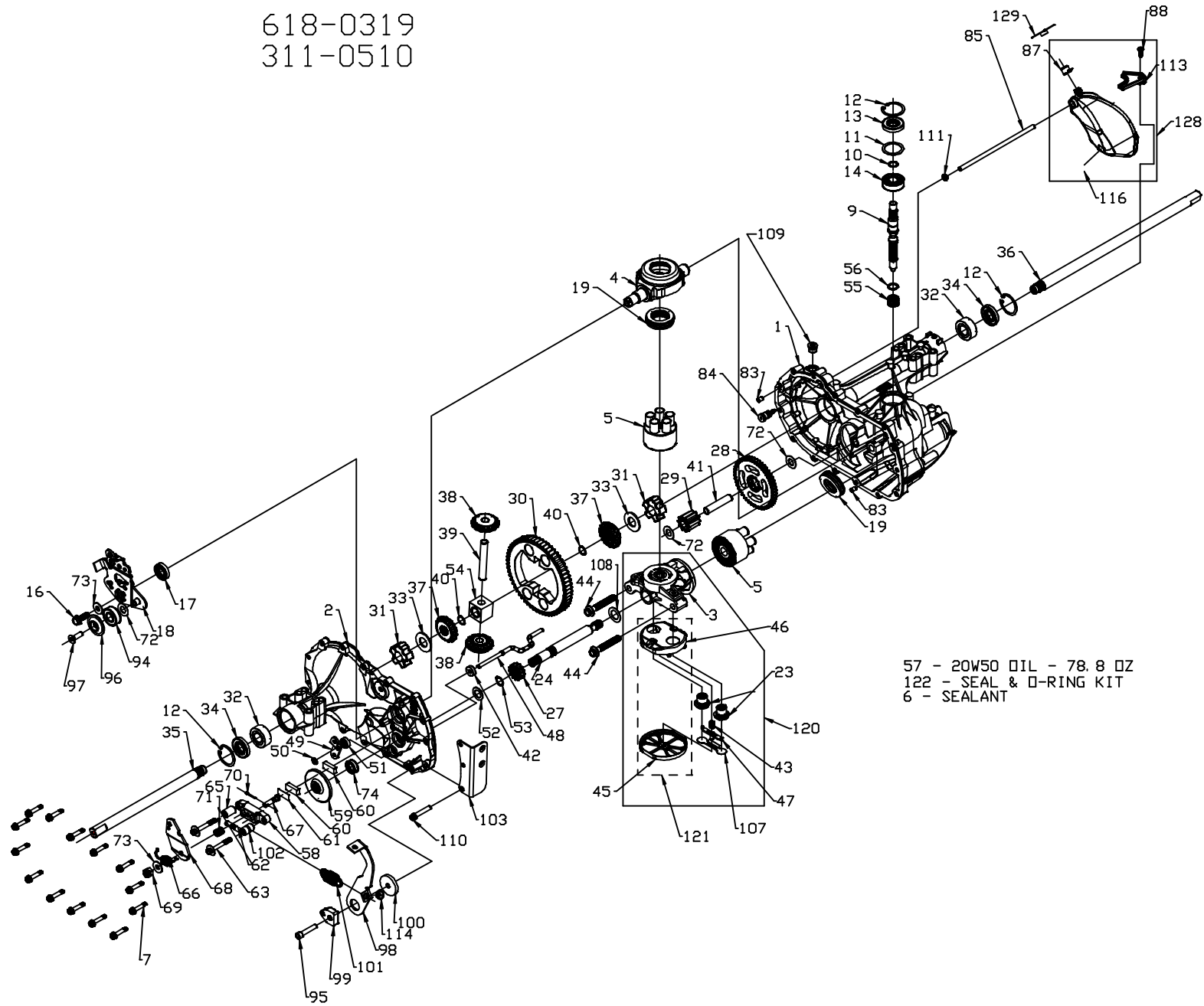
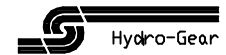


618-0319
311-0510



57 - 20W50 OIL - 78.8 OZ
122 - SEAL & O-RING KIT
6 - SEALANT



618-0319
311-0510

| ITEM | PART NUMBER | QTY | DESCRIPTION |
|------|-------------|---------|--|
| 1 | 70467 | 1 | MAIN HOUSING, ASSEMBLY |
| | | 1 | MAIN HOUSING, MACHINED |
| | | 1 | BUSHING .865 X .985 X .790 |
| 2 | 70483 | 1 | SIDE HOUSING, ASSEMBLY |
| | | 1 | SIDE HOUSING, MACHINED |
| | | 1 | BUSHING .865 X .985 X .790 |
| | | 1 | BUSHING .624 X .719 X .562 |
| 3 | 70477 | 1 | CENTER SECTION, ASSEMBLY |
| | | 1 | CENTER SECTION, MACHINED |
| | | 1 | BUSHING .707 X .788 X .591 |
| 4 | 51048 | 1 | SWASHPLATE, TRUNNION MACHINED |
| 5 | 70331 | 2 | BLOCK - ASSEMBLY |
| | | 1 | BLOCK - CYLINDER |
| | | 5 | PISTON |
| | | 5 | SPRING, COMPRESSION |
| | | 5 | WASHER - THRUST |
| 6 | 50928 | 10.5 UZ | SEALANT |
| 7 | 51190 | 14 | HEX FLANGE SCREW 1/4-20 X 1.25 |
| 9 | 51062 | 1 | SHAFT, INPUT |
| 10 | 2000022 | 1 | RING - RETAINING |
| 11 | 50951 | 1 | SPACER |
| 12 | 50329 | 3 | RING - RETAINING |
| 13 | 51161 | 1 | SEAL, LIP .67 X 1.58 X .276 |
| 14 | 50315 | 1 | BALL BRG 17MM ID X 40MM OD X 12MM |
| 16 | 51064 | 1 | HEX FLANGE HEAD SCREW 5/16-24 X 0.75 |
| 17 | 51140 | 1 | LIP SEAL 18 X 32 X 7 |
| 18 | 51119 | 1 | ARM, CONTROL |
| 19 | 50551 | 2 | BEARING, 30X52X13 THRUST |
| 23 | 51084 | 2 | CHECK PLUG ASSEMBLY, .027, WASHER |
| 24 | 50966 | 1 | SHAFT, MOTOR |
| 27 | 51130 | 1 | GEAR - PINNION, 13T |
| 28 | 51129 | 1 | 10T/48T GEAR |
| 29 | 51043 | 1 | GEAR, 10T JACKSHAFT |
| 30 | 51044 | 1 | 60T BULL GEAR |
| 31 | 51088 | 2 | SLEEVE BEARING .75 X 1.750 X .625 |
| 32 | 51089 | 2 | SLEEVE BEARING (OUTBOARD) .75 X 1.575 X .625 |
| 33 | 44875 | 2 | WASHER, 3/4 ID X 1-1/2 OD X .13 THK |
| 34 | 51066 | 2 | LIP SEAL AXLE SEAL |
| 35 | 51079 | 1 | SHAFT, AXLE .75 X 11.39 (DD, R.H.) |
| 36 | 51078 | 1 | SHAFT, AXLE .75 X 17.99 (DD, L.H.) |
| 37 | 44096 | 2 | MITER GEAR (SPLINED) |
| 38 | 44097 | 2 | MITER GEAR 15T (0.5 ID) |
| 39 | 50146 | 1 | SHAFT |
| 40 | 44871 | 2 | RING, SPIRAL RETAINING |
| 41 | 51083 | 1 | PIN, JACKSHAFT |
| 42 | 51100 | 1 | MAGNET, RING |
| 43 | 51136 | 1 | SPRING, BYPASS |
| 44 | 50016 | 2 | HYDRO MTG SCREW 3/8-24 X 2.5 LONG |
| 45 | 51132 | 1 | FILTER |
| 46 | 51133 | 1 | BASE, FILTER |
| 47 | 51091 | 1 | ACTUATOR, BYPASS |
| 48 | 51098 | 1 | ROD, BYPASS ACTUATOR |
| 49 | 51135 | 1 | ARM, BYPASS |
| 50 | 51116 | 1 | RETAINING RING 0.250 EXTERNAL |
| 51 | 51081 | 1 | SEAL, LIP .741 X .250 X .250 TC |
| 52 | 44371 | 1 | FLAT WASHER, 5/8 ID X 1.0 OD X .05 THK |
| 53 | 44145 | 1 | RETAINING RING |
| 54 | 51071 | 1 | BEARING, CENTER BLOCK |
| 55 | 2003014 | 1 | SPRING - HELICAL COMPRESSION |
| 56 | 2003017 | 1 | WASHER |
| 57 | | 78.8 UZ | 20V-50 OIL |
| 58 | 44092 | 1 | BRAKE YOKE |
| 59 | 51072 | 1 | ROTOR, BRAKE |
| 60 | 44132 | 2 | BRAKE PUCK |
| 61 | 44134 | 1 | PUCK PLATE |
| 62 | 44127 | 2 | BRAKE ACTUATING PIN |
| 63 | 51146 | 2 | HFCS 1/4-20 X 2 W/PATCH, SPECIAL FLANGE |
| 65 | 23711 | 1 | SPACER |

| ITEM | PART NUMBER | QTY | DESCRIPTION |
|------|--------------|-----|---|
| 66 | 51345 | 1 | SPRING, BRAKE ARM BIAS |
| 67 | 44138 | 1 | SQ. HD. BOLT 5/16-24- RIBBED |
| 68 | 44094 | 1 | ARM, BRAKE |
| 69 | 44142 | 1 | SLOTTED HEX NUT 5/16-24 |
| 70 | 44101 | 1 | COTTER PIN 3/32 X 3/4 |
| 71 | 50919 | 1 | COMPRESSION SPRING BRAKE ANTI-DRAG |
| 72 | 50132 | 3 | WASHER, HT 5 I.D. X 1 O.D. X .032 |
| 73 | 44130 | 2 | FLAT - WASHER 11/32 I.D. X 7/8 O.D. |
| 74 | 44761 | 1 | OIL SEAL .625 X 1.0 X .25 |
| 83 | 9004800-2506 | 2 | PIN, STANDARD HEADLESS |
| 84 | 51143 | 1 | FITTING, 5/16 SAE 5/32 TUBE |
| 85 | 51147 | 1 | HOSE, EXPANSION TANK |
| 87 | 51251 | 1 | CAP, VENT |
| 88 | 50653 | 1 | BOLT, SELF TAPPING 10-32 X 1/2 |
| 94 | 44147 | 1 | BALL BEARING .62 ID X 1.38 X .44 |
| 95 | 50837 | 1 | SOCKET HEAD CAP SCREW, 5/16-24 X 1-1/2 |
| 96 | 51200 | 1 | SPACER, LOCATING |
| 97 | 50870 | 1 | SCREW, SFHCS |
| 98 | 51120 | 1 | ARM, RETURN |
| 99 | 51097 | 1 | PUCK, ADJUSTING |
| 100 | 51122 | 1 | WASHER, .325 OD X 1.60 ID X .150 W |
| 101 | 51131 | 1 | SPRING, EXTENSION |
| 102 | 51123 | 1 | SPACER .560 OD X .260 ID X .870 |
| 103 | 51223 | 1 | BRACKET, TORQUE |
| 107 | 51134 | 1 | DEFLECTOR |
| 108 | 51069 | 1 | WASHER, MOTOR SHAFT .71 ID X 1.15 OD X .030 THK |
| 109 | 9005110-5600 | 1 | PLUG, SAE #6 |
| 110 | 50868 | 1 | TORX HEAD SCREW, 5/16-18 T.F. |
| 111 | 51144 | 1 | O-RING .07 X .301 ID |
| 113 | 51179 | 1 | BRACKET, SUPPORT EXPANSION TANK |
| 114 | 51184 | 1 | SPRING GUIDE |
| 116 | 51196 | 1 | SILICON SPONGE |
| 120 | 70486 | 1 | CENTER SECTION - FILTER - BYPASS ASSEMBLY |
| | | 1 | CENTER SECTION MACHINED |
| | | 1 | BASE FILTER |
| | | 2 | CHECK PLUG ASSEMBLY |
| | | 1 | SPRING, BYPASS |
| | | 1 | ACTUATOR, BYPASS |
| | | 1 | DEFLECTOR |
| | | 1 | FILTER |
| | | 1 | BUSHING .707 X .788 X .591 |
| 121 | 70466 | 1 | FILTER ASSEMBLY |
| | | 1 | FILTER |
| | | 1 | BASE, FILTER |
| 122 | 70463 | 1 | SEAL - O-RING KIT |
| | | 1 | SEAL, LIP .67 X 1.58 X .276 |
| | | 1 | LIP SEAL 18 X 32 X 7 |
| | | 2 | LIP SEAL .706 X 1.584 X .25 |
| | | 1 | SEAL, LIP .741 X .250 X .250 TC |
| | | 1 | OIL SEAL .625 X 1.0 X .25 |
| | | 1 | O-RING .07 X .301 ID |
| 128 | 70503 | 1 | KIT, EXPANSION TANK |
| | | 1 | TANK, EXPANSION |
| | | 1 | CAP, VENT |
| | | 1 | BOLT, SELF TAPPING 10-32 X 1/2 |
| | | 1 | BRACKET, SUPPRT EXPANSION TANK |
| | | 1 | SILICON SPONGE 1/2 X 1/2 X 3/16 |
| 129 | 51252 | 1 | CAP, EXPANSION TANK SHIPPING |

