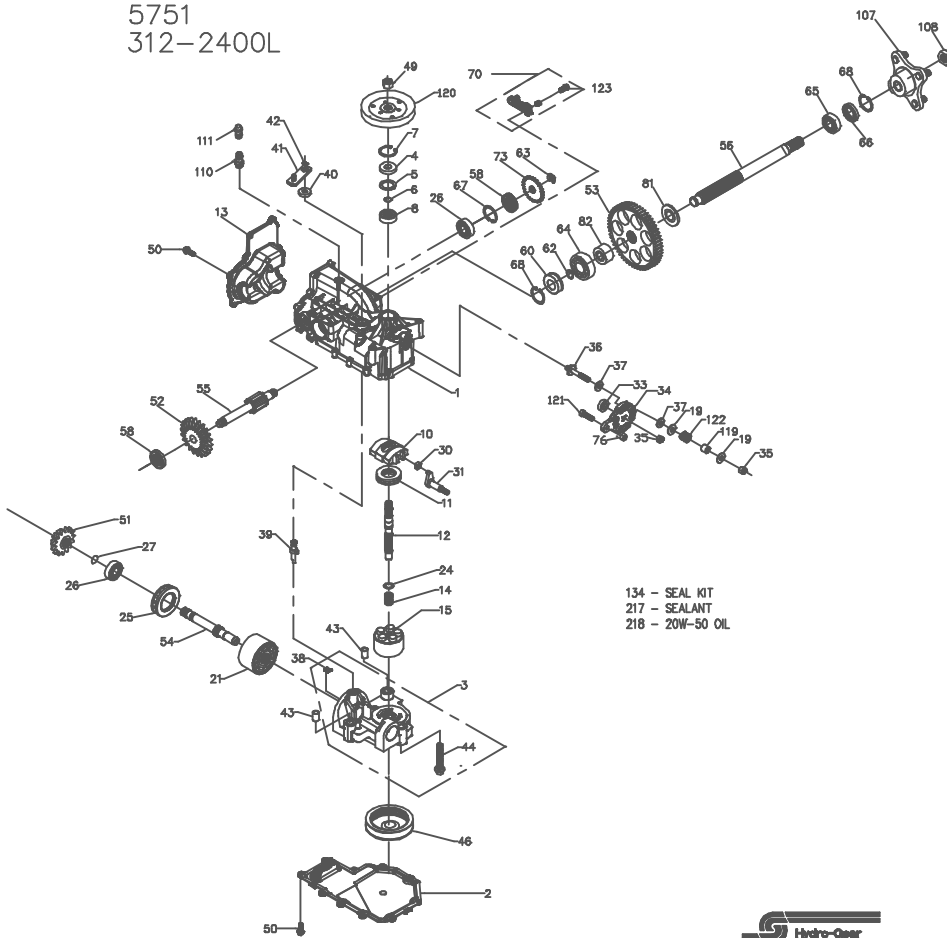


5751  
312-2400L



5751  
312-2400L

ITEM #	PART #	QTY	DESCRIPTION	ITEM #	PART #	QTY	DESCRIPTION
1	70329	1	UPPER HOUSING ASSEMBLY	52	50745	1	19T BEVEL GEAR
		1	UPPER HOUSING	53	50746	1	53T SPUR GEAR
		2	CRADLE BEARING	54	50757	1	MOTOR SHAFT
		1	TRUNNION BUSHING	55	70393	1	BRAKE SHAFT KIT
		1	LIP SEAL			1	RETAINING RING 0.440 EXTERNAL
2	50890RM	1	LOWER HOUSING	56	50748	1	AXLE SHAFT
3	70667	1	KIT, CENTER SECTION	58	50735	2	SEAL, LIP 17 X 40 X 5
		1	CENTER SECTION	60	50995	1	SEAL PLUG - SIDE
		1	BUSHING .67 X 1.03 X .75	62	50759	1	RETAINING RING - AXLE
		1	PLATE, BYPASS	63	70396	1	RETAINING RING KIT
		3	SCREW 3/8-24 X 2.5	64	50743	1	BEARING-BALL 20X47X14(6204)
		2	CHECK PLUG ASSEMBLY, .027	65	50740	1	BEARING-BALL 25X47X12(6005)
		1	LIP SEAL	66	50751	1	SEAL
4	9008000-0128	1	SPACER	67	50329	1	RETAINING RING
5	2003018	1	WIRE RETAINING RING	68	50760	1	RETAINING RING-AXLE
6	2003016	1	RETAINING RING	70	70392	1	RH, BRAKE ARM SERVICE ASSEMBLY
7	2003052	1	RETAINING RING			1	BRAKE ARM
8	2003043	1	BALL BEARING			1	CLEVIS PIN
10	2003087	1	VARIABLE SWASHPLATE			1	BUSHING 0.255X0.381X0.330
11	50551	1	THRUST BEARING 30 X 52 X 13			1	HEX WASHER HEAD SCREW, 1/4-20 X 7/8
12	50005	1	INPUT SHAFT	73	50754	1	BRAKE DISC
13	50891RM	1	COVER-BACK	76	43083	1	HEX NUT 5/16-18
14	2003014	1	SPRING, BLOCK	81	50942-2	1	AXLE BUSHING
15	70331	1	10cc CYLINDER BLOCK ASSY	82	50942-1	1	AXLE BUSHING
		1	10cc CYLINDER BLOCK	106	70314	1	HUB ASSEMBLY
		5	10cc PISTON SPRING			1	HUB
		5	PISTON SEAT WASHER			4	LUG BOLT
		5	10cc PISTON	108	50863	1	NUT, HEX 3/4-16
		2	WASHER	110	70110	1	FITTING O-RING ASSEMBLY
19	44130	1	21cc CYLINDER BLOCK ASSY			1	PLASTIC HOSE FITTING
21	70082	1	21cc CYLINDER BLOCK			1	O-RING
		7	21cc PISTON SPRING	111	70109	1	CAP VENT ASSEMBLY
		7	PISTON SEAT WASHER			1	CAP-POPPET VALVE
		7	10cc PISTON			1	PLASTIC VENT
24	2003017	1	WASHER, BLOCK THRUST	119	50278	1	SPACER
25	50552	1	THRUST BEARING 42 X 68 X 16	120	51182	1	PULLEY, 4.5
26	50315	2	BALL BEARING	121	51047	1	BOLT 5/16-18X1-1/4
27	2000022	1	WIRE RETAINING RING	122	50277	1	HELICAL COMP. SPRING
30	2000015	1	SLOT GUIDE	123	51076	1	HEX WASHER HEAD SCREW, 1/4-20 X 7/8
31	50807	1	TRUNNION ARM	134	70553	1	KIT, SEAL
33	9008000-0126	1	LIP SEAL			1	SEAL, LIP 15X35X7 PTC
34	50749	1	CONTROL ARM			1	RING, RETAINING
35	50317	2	NUT			1	SEAL, LIP 12X25X7
36	50284	1	STUD - LONG 5/16-24			1	SEAL, LIP 10X25X7
37	50281	2	FRICTION PUCK			1	RING, RETAINING
38	70680	1	KIT, BYPASS PLATE			2	SEAL, LIP 17X40X7
39	2003555	1	BYPASS ACTUATOR			1	SEAL, LIP 1.85X.32
40	45074	1	LIP SEAL			1	RING, RETAINING
41	50126	1	BYPASS ARM			1	RING, RETAINING .440 EXTERNAL
42	44870	1	RETAINING RING			1	SEAL, LIP .98X1.85X.276
43	50002	2	PIN			1	RING, RETAINING
44	50016	3	SCREW			2	RING, RETAINING
46	50990	1	FILTER			2	SEAL, LIP 17X40X5
49	44133	1	NUT-HEX HEAD JAM 1/2-20	217	50928	1	SEALANT
50	50752	18	SCREW, 1/4-20 X .75 LONG	218		77 oz	20W-50 OIL
51	50744	1	14T BEVEL GEAR				