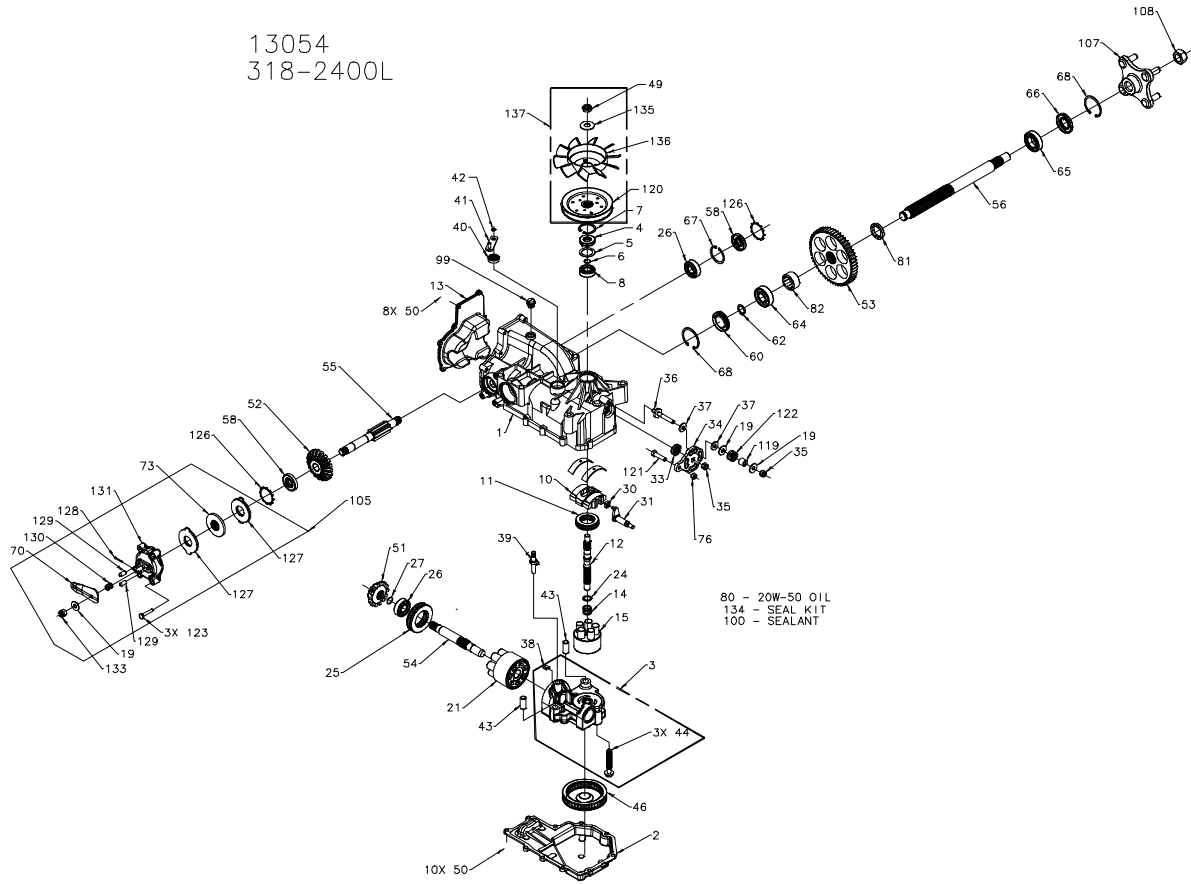


13054
318-2400L



13054
318-2400L

ITEM #	PART #	QTY	DESCRIPTION	ITEM #	PART #	QTY	DESCRIPTION
1	70556	1	KIT, HOUSING-MAIN	64	50743	1	BEARING-BALL 20X47X14(6204)
		1	HOUSING, MAIN	65	50740	1	BEARING-BALL 25X47X12(6005)
		2	CRADLE BEARING	66	50751	1	SEAL
		1	LIP SEAL	67	50329	1	RETAINING RING
2	50890RM	1	TRUNNION BUSHING	68	50760	2	RETAINING RING-AXLE
3	70677	1	LOWER HOUSING	70	51349	1	ARM, BRAKE
		1	KIT, CENTER SECTION	73	44855	1	ROTOR, BRAKE
		1	CENTER SECTION	76	43083	1	HEX NUT 5/16-18
		1	BUSHING .67 X 1.03 X .75	80		79oz	20W-50 OIL
		1	PLATE, BYPASS	81	50942-2	1	AXLE BUSHING
4	9008000-0128	1	SCREW 3/8-24 X 2.5	82	50942-1	1	AXLE BUSHING
5	2003018	1	CHECK PLUG ASSEMBLY, .027	88	9005200-5600	1	PLUG-PLASTIC
6	2003016	1	LIP SEAL	100	50928	1	SEALANT
7	2003052	1	SPACER	105	70561	1	KIT, BRAKE
8	2003043	1	WIRE RETAINING RING			1	WASHER
10	2003087	1	RETAINING RING			1	ARM, BRAKE
11	50551	1	BALL BEARING			1	ROTOR, BRAKE
12	50005	1	VARIABLE SWASHPLATE	3		3	SCREW, 1/4-28 X 1.38 W/PATCH
13	50891RM	1	THRUST BEARING 30 X 52 X 13	2		2	STATOR, BRAKE FRICTION
14	2003014	1	INPUT SHAFT	1		1	COTTER PIN 3/32 X 3/4
15	70331	1	COVER-BACK	2		2	BRAKE ACTUATING PIN
		1	SPRING, BLOCK	1		1	COMPRESSION SPRING ANTI DRAG
		5	10cc CYLINDER BLOCK ASS'Y	1		1	KIT, YOKE-BRAKE
		5	10cc PISTON SPRING	107	70314	1	SLOTTED HEX NUT 5/16-24
		5	PISTON SEAT WASHER	1		1	HUB ASSEMBLY
		5	10cc PISTON	4		4	LUG BOLT
19	44130	3	WASHER	1		1	NUT, HEX 3/4-16
21	70082	1	21cc CYLINDER BLOCK ASS'Y	1		1	SPACER
		1	21cc CYLINDER BLOCK	120	51182	1	PULLEY, 4.5
		7	21cc PISTON SPRING	121	51047	1	BOLT 5/16-18X1-1/4
		7	PISTON SEAT WASHER	122	50277	1	HELICAL COMP. SPRING
		7	21cc PISTON	123	51341	3	SCREW, 1/4-28 X 1.25 W/PATCH
24	2003017	1	WASHER, BLOCK THRUST	126	51316	2	RING, RETAINING
25	50552	1	THRUST BEARING 42 X 68 X 16	127	51340	2	STATOR, BRAKE FRICTION
26	50315	2	BALL BEARING	128	44101	1	COTTER PIN 5/32 X 3/4
27	2000022	1	WIRE RETAINING RING	129	44127	2	BRAKE ACTUATING PIN
30	2000015	1	SLOT GUIDE	130	50919	1	COMPRESSION SPRING BRAKE ANTI DRAG
31	50807	1	TRUNNION ARM	131	70560	1	KIT, YOKE-BRAKE
33	9008000-0126	1	LIP SEAL			1	SQ HD BOLT 5/16-24 RIBBED
34	50749	1	CONTROL ARM			1	YOKE, BRAKE
35	50317	2	NUT	133	44142	1	SLOTTED HEX NUT 5/16-24
36	50284	1	STUD - LONG 5/16-24	134	70553	1	KIT, SEAL
37	50281	2	FRICTION PUCK			1	SEAL, LIP 15 X 35 X 7
38	70680	1	KIT, BYPASS PLATE			1	RING, RETAINING
39	2003555	1	BYPASS ACTUATOR			1	SEAL, LIP 12 X 25 X 7
40	45074	1	LIP SEAL			1	SEAL, LIP 10 X 25 X 7
41	50126	1	BYPASS ARM			1	RING, RETAINING
42	44870	1	RETAINING RING			2	SEAL, LIP 17 X 40 X 7
43	50002	2	PIN			1	SEAL, LIP 1.85 X .32
44	50016	3	SCREW			1	RING, RETAINING
46	50990	1	FILTER			1	RING, RETAINING .440 EXTERNAL
49	51244	1	HEX LOCK NUT 1/2-20 (NYLON INSERT)			1	SEAL, LIP .98 X 1.85 X .276
50	50752	18	SCREW, 1/4-20 X .75 LONG			1	RING, RETAINING
51	50744	1	14T BEVEL GEAR			2	RING, RETAINING
52	50745	1	19T BEVEL GEAR			2	RING, RETAINING
53	50746	1	53T SPUR GEAR	135	51234	1	WASHER, .531 X 1.250 X .092 (BELLEVILLE)
54	50757	1	MOTOR SHAFT	136	51362	1	FAN, 6", 10 BLADE
55	51335	1	BRAKE SHAFT	137	70583	1	KIT, FAN-PULLEY
56	50748	1	AXLE SHAFT			1	WASHER, .531 X 1.250 X .092 (BELLEVILLE)
58	51161	2	SEAL, LIP 17 X 40 X 7			1	FAN, 6", 10 BLADE
60	50995	1	SEAL PLUG - SIDE			1	HEX LOCK NUT 1/2-20 (NYLON INSERT)
62	50759	1	RETAINING RING - AXLE			1	PULLEY, 4.5