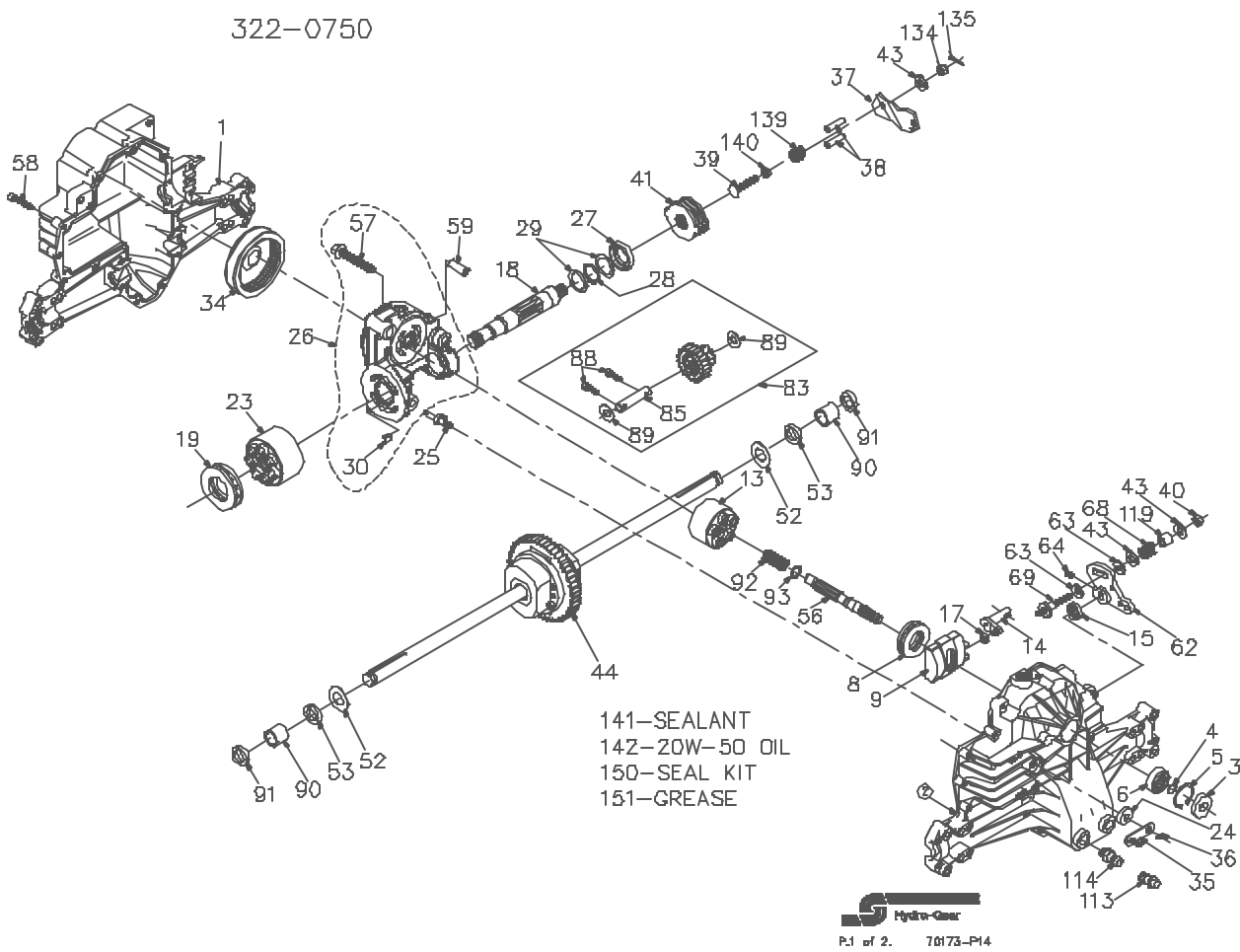


322-0750



322-0750

ITEM NO	HYDRO-GEAR PART NO	QTY	DESCRIPTION
1	50074RM	1	HOUSING, LOWER
2	7D255	1	ASSEMBLY, UPPER HOUSING
		1	HOUSING, UPPER
		1	BEARING-TRUNNION JOURNAL
3	8008000-0128	1	SEAL-LIP
4	2003016	1	RING-WIRE RETAINING
5	2003052	1	RING-RETAINING
6	2003043	1	BEARING-SHAFT BALL
8	50551	1	BEARING-THRUST 30X52X13
9	2003087	1	SWASHPLATE-VARIABLE
13	70331	1	BLOCK-CYLINDER ASS'Y.
		1	BLOCK-CYLINDER
		5	PISTON
		5	PISTON SPRING
		5	PISTON SPRING WASHER
14	2003006	1	ARM-TRUNNION
15	8008000-0128	1	SEAL-LIP
17	200D015	1	GUIDE-SLOT
18	60449	1	SHAFT-MOTOR
19	50552	1	BEARING-THRUST 42X68X16
23	70082	1	BLOCK-CYLINDER (MOTOR) ASSY
		1	BLOCK-CYLINDER
		7	PISTON
		7	PISTON SPRING
		7	PISTON SPRING WASHER
24	45074	1	SEAL-LIP 1DX25X7
25	2003006	1	ACTUATOR-BYPASS
26	70250	1	KIT, CENTER SECTOPM
		1	PLATE, BYPASS
		2	CHECK PLUG ASSEMBLY
		1	CENTER SECTION
		1	DU BEARING
		3	BOLT-3/8-24 X 2.5
		1	BUSHINGS, 1.02 X 1.1 X .67
27	45075	1	SEAL-LIP 26X42X8
28	50007	1	RING-RETAINING
29	44872	2	WASHER-26X35X1
30	70680	1	KIT, BYPASS PLATE
34	44864	1	DIL FILTER ELEMENT
35	50126	1	ARM-BYPASS
36	44870	1	RING-RETAINING
37	5D13D	1	ARM-ACTUATING
38	44891	2	PIN-ACTUATING
39	50316	1	BOLT-5/16-18 X 1-3/4
40	50317	1	NUT, HEX 5/16-24
41	70136	1	BRAKE ROTOR/STATOR KIT
		4	STATOR-BRAKE
		2	ROTOR-BRAKE
43	44130	3	WASHER-7/16 X 7/8 X .080

ITEM NO	HYDRO-GEAR PART NO	QTY	DESCRIPTION
44	7D13D	1	DIFFERENTIAL ASSEMBLY
		1	GEAR-DIFF. 50T
		2	DIFF. COVER
		2	GEAR-BEVEL 15T
		2	GEAR-PLANET 15T
		2	JAM NUT
		4	BOLT-1/4-20 X 1.38
		1	AXLE SHAFT, RH
		1	AXLE SHAFT, LH
		2	BEARING, BLOCK
		1	SHAFT
52	5D152	2	WASHER-3/4 X 1.5 X .D3
53	45076	2	SEAL- .76 X 1.26 X .260
56	8D006	1	SHAFT-INPUT
57	5D016	3	BOLT, 3/8-24 X 2.5
58	44878	21	BOLT-1/4-20 X 1.38
59	60002	2	PIN-.6 OD X .43 ID X .760
62	8D254	1	ARM-CONTROL
63	5D281	2	BUCK-DAMPENER
64	5D018	1	SET SCREW
68	5D277	1	SPRING
69	5D284	1	5/16-24 STUD
83	7D132	1	JACK SHAFT/PINION GEAR ASSEMBLY
		1	23T GEAR
		1	10T PINION
		1	JACK SHAFT
		2	CAPSCREW 6M X 20 LG
		2	WASHER 7/16 X 1 X .5
85	5D559	1	JACK SHAFT
88	5D154	2	CAPSCREW 6M X 20 LG
89	5D132	2	WASHER 7/16 X 1 X .5
90	5D118	2	SLEEVE BEARING
91	50841	2	SEAL, LIP 0.75X1.0DX0.158
92	2003D14	1	SPRING, BLOCK
93	2003D17	1	WASHER, BLOCK THRUST
113	7D159	1	CAP-VENT ASSEMBLY
		1	CAP-POPPET VALVE
		1	PLASTIC VENT
114	7D11D	1	FITTING-D RING ASSEMBLY
		1	D-RING
		1	PLASTIC HDSE FITTING
119	5D278	1	SPACER
134	44142	1	CASTLE NUT, 5/16-24
135	44101	1	DOTTER PIN
138	5D431	1	COMPRESSION SPRING
140	6D289	1	NUT, HEX 5/16-24
141	50828	1	SEALANT
142		61oz	20W-50 OIL
150	70312	1	SEAL KIT
151	5D416	1	GREASE