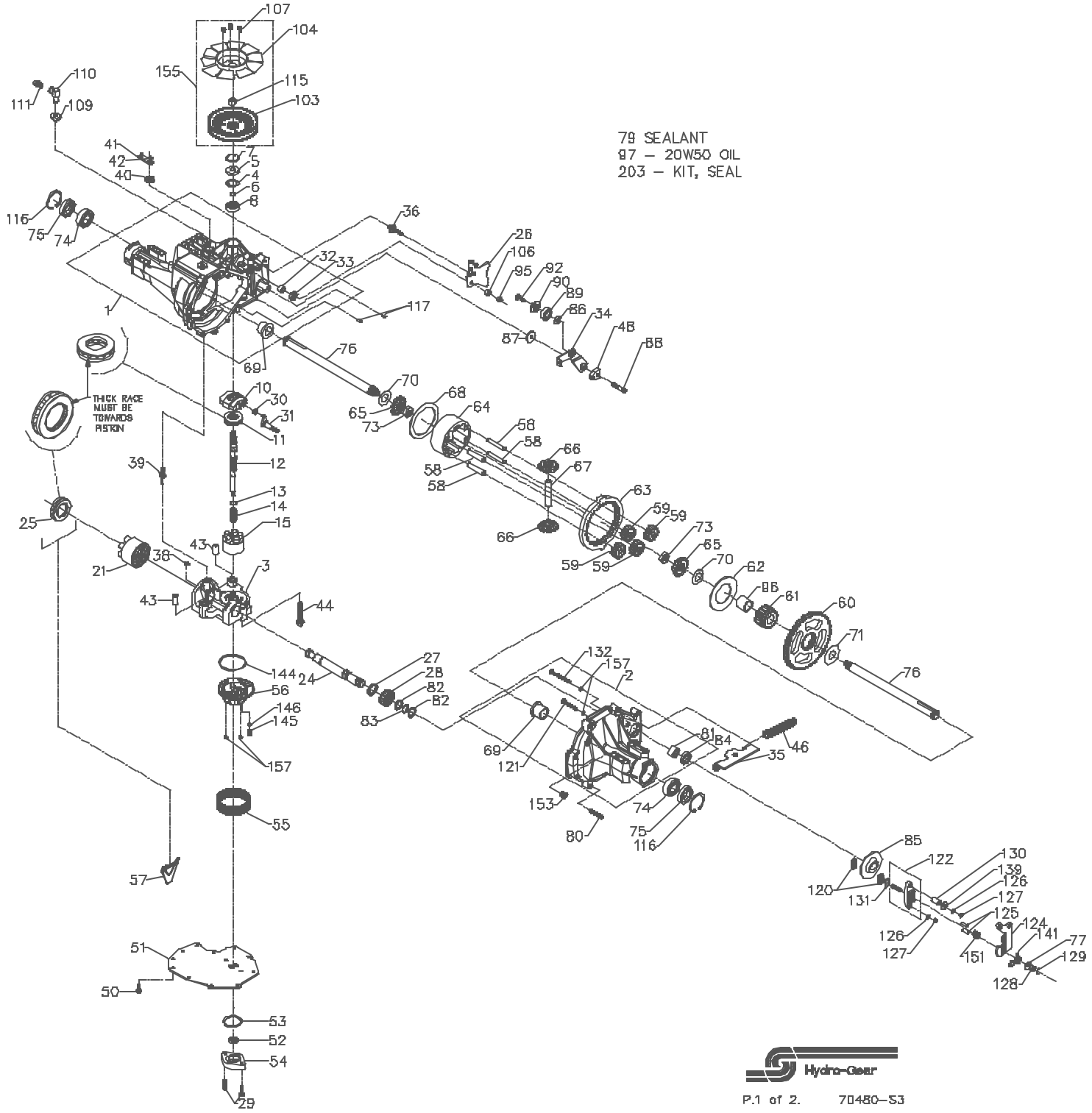


100-3479
322-3000

79 SEALANT
97 - 20W50 OIL
203 - KIT, SEAL



Hydro-Gear
P.1 of 2. 70480-S3

100-3479
322-3000

| ITEM # | PART # | QTY | DESCRIPTION |
|--------|--------------|-----|--------------------------------------|
| 1 | 70297 | 1 | MAIN HOUSING ASSEMBLY |
| | | 1 | MAIN HOUSING |
| | | 1 | LIP SEAL |
| | | 1 | FLANGE BEARING |
| | | 1 | TRUNNION BUSHING |
| 2 | 70300 | 2 | CRADLE BEARING |
| | | 1 | R.H. HOUSING ASSEMBLY |
| | | 1 | R.H. HOUSING |
| | | 1 | FLANGE BEARING |
| | | 2 | O RING |
| | | 1 | RIB NECK BOLT, 2" |
| | | 1 | RIB NECK BOLT, 3" |
| | | 1 | NEEDLE BEARING (SCE1412) |
| | | 1 | LIP SEAL (.875 I.D. x 1.30 D. x .25) |
| 3 | 70500 | 1 | KIT, CENTER SECTION |
| | | 1 | CENTER SECTION |
| | | 1 | DU BUSHING |
| | | 1 | BUSHING |
| | | 1 | NO BLEED CHECK PLUG ASSEMBLY |
| | | 1 | .027 BLEED CHECK PLUG ASSEMBLY |
| | | 1 | SPACER |
| 4 | 2003018 | 1 | SEAL-LIP |
| 5 | 9008000-0128 | 1 | WIRE RETAINING RING |
| 6 | 2003016 | 1 | RETAINING RING |
| 7 | 2003052 | 1 | RETAINING RING |
| 8 | 2003043 | 1 | BALL BEARING |
| 10 | 2003087 | 1 | VARIABLE SWASHPLATE |
| 11 | 50551 | 1 | THRUST BEARING 30 X 52 X 13 |
| 12 | 50795 | 1 | INPUT SHAFT |
| 13 | 2003017 | 1 | BLOCK THRUST WASHER |
| 14 | 2003014 | 1 | BLOCK SPRING |
| 15 | 70331 | 1 | 10cc CYLINDER BLOCK ASSEMBLY |
| | | 1 | 10cc CYLINDER BLOCK |
| | | 5 | 10cc PISTON |
| | | 5 | 10cc PISTON SPRING |
| | | 5 | PISTON SEAT WASHER |
| 21 | 70082 | 1 | 21cc CYLINDER BLOCK ASSEMBLY |
| | | 1 | 21cc CYLINDER BLOCK |
| | | 7 | PISTON SEAT WASHER |
| | | 7 | 21cc PISTON |
| | | 7 | 21cc PISTON SPRING |
| 24 | 50862 | 1 | OUTPUT (MOTOR) SHAFT |
| 25 | 50552 | 1 | THRUST BEARING 42 X 68 X 16 |
| 26 | 51250 | 1 | CONTROL ARM |
| 27 | 50774 | 1 | SPACER |
| 28 | 50861 | 1 | 16T PINION GEAR |
| 29 | 50975 | 2 | CAPSCREW, M6 X 1-25 |
| 30 | 2000015 | 1 | SLOT GUIDE |
| 31 | 50807 | 1 | TRUNNION ARM |
| 32 | 2003009 | 1 | TRUNNION BUSHING |
| 33 | 9008000-0126 | 1 | LIP SEAL |
| 34 | 51257 | 1 | RETURN ARM |
| 35 | 51243 | 1 | BRACKET, BELL CRANK |
| 36 | 50426 | 1 | 5/16-24 STD |
| 38 | 2003554 | 1 | BYPASS PLATE |
| 39 | 2003555 | 1 | BYPASS ACTUATOR |

| ITEM # | PART # | QTY | DESCRIPTION |
|--------|--------------|--------|--------------------------------------|
| 40 | 45074 | 1 | LIP SEAL |
| 41 | 50270 | 1 | BYPASS ARM |
| 42 | 44870 | 1 | RETAINING RING |
| 43 | 50002 | 2 | PIN |
| 44 | 50016 | 3 | SCREW |
| 48 | 51199 | 1 | RETURN SPRING |
| 48 | 51097 | 1 | ADJUSTING PUCK |
| 50 | 50752 | 11 | SCREW, 1/4-20 X .75 |
| 51 | 50972 | 1 | LOWER COVER |
| 52 | 50273 | 1 | GEROTOR ASSEMBLY |
| 53 | 9004101-1340 | 1 | O-RING |
| 54 | 50260 | 1 | GEROTOR COVER |
| 55 | 70538 | 1 | KIT, FILTER |
| 56 | 51156 | 1 | CHARGE MANIFOLD |
| 57 | 50796 | 1 | RETAINER, MOTOR BEARING |
| 58 | 50776 | 4 | PIN, CARRIER |
| 59 | 50763 | 4 | 15T PLANET GEAR |
| 60 | 50646 | 1 | 67T SPUR GEAR |
| 61 | 50645 | 1 | 21 TOOTH SUN GEAR |
| 62 | 50769 | 1 | PLANET THRUST PLATE |
| 63 | 50764 | 1 | 51T RING GEAR |
| 64 | 50765 | 1 | PLANETARY CARRIER |
| 65 | 50647 | 2 | MITER GEAR, DIFF. (SPLINED) |
| 66 | 50648 | 2 | MITER GEAR, DIFF. |
| 67 | 50766 | 1 | SHAFT, DIFFERENTIAL |
| 68 | 50767 | 1 | DIFF. THRUST PLATE |
| 69 | 50768 | 2 | FLANGE BEARING |
| 70 | 50770 | 2 | WASHER |
| 71 | 50788 | 1 | WASHER |
| 73 | 50791 | 2 | HEX JAM NUT, 5/8-18 |
| 74 | 50771 | 2 | BALL BRG 6205-1 |
| 75 | 50772 | 2 | SEAL 1" ID x 2.0472" x 0.375" |
| 76 | 50663 | 2 | SHAFT, AXLE |
| 77 | 44130 | 1 | WASHER |
| 79 | 50928 | 1 | SEALANT |
| 80 | 50868 | 9 | TORX HEAD SCREW, 5/16-18 |
| 81 | 44752 | 1 | NEEDLE BEARING (SCE1412) |
| 82 | 50777 | 2 | WASHER |
| 83 | 50775 | 1 | RETAINING RING |
| 84 | 50773 | 1 | LIP SEAL (.875 I.D. x 1.30 D. x .25) |
| 85 | 50779 | 1 | BRAKE DISK |
| 86 | 50132 | 1 | WASHER .5 X 1.0 X .03 |
| 87 | 50836 | 1 | WASHER |
| 88 | 50837 | 1 | SCREW, 5/16-24 X 1-1/2 |
| 89 | 44147 | 1 | BEARING |
| 90 | 51200 | 1 | SPACER, LOCATING |
| 92 | 50870 | 1 | COUNTERSUNK SCREW |
| 95 | 50108 | 1 | HEX LOCK NUT 5/16-24 |
| 96 | 50866 | 1 | SLEEVE BEARING |
| 97 | | 122 OZ | OIL-20W50 |
| 103 | 51242 | 1 | PULLEY |
| 104 | 50848 | 1 | FAN |
| 106 | 50850 | 1 | SPACER, TRUNNION |
| 107 | 50851 | 3 | SCREW |
| 109 | 50133 | 1 | BUSHING, RUBBER |
| 110 | 50308 | 1 | FITTING |
| 111 | 70109 | 1 | CAP-VENT ASSEMBLY |
| | | 1 | PLASTIC VENT |
| | | 1 | CAP-VENT |
| 115 | 44133 | 1 | HEX NUT 1/2-20 |
| 116 | 50859 | 2 | RETAINING RING |
| 117 | 9004800-2506 | 2 | STD HDLS PIN |

| ITEM # | PART # | QTY | DESCRIPTION |
|--------|--------------|-----|--------------------------------------|
| 120 | 44132 | 2 | PUCK, BRAKE |
| 121 | 50874 | 1 | RIB NECK BOLT, 2" |
| 122 | 70633 | 1 | YOKE, BRAKE ASSEMBLY |
| 124 | 50911 | 1 | ARM, BRAKE |
| 125 | 44127 | 2 | PINS, BRAKE |
| 126 | 43177 | 2 | LOCKWASHER, 1/4" |
| 127 | 43178 | 2 | NUT, 1/4-20 |
| 128 | 44142 | 1 | NUT, CASTLE |
| 129 | 44101 | 1 | COTTER PIN |
| 130 | 23711 | 1 | SPACER |
| 131 | 44134 | 1 | PUCK PLATE |
| 132 | 50865 | 1 | RIB NECK BOLT, 3" |
| 139 | 44278 | 1 | WASHER, 7/80D X .265ID X .125 THK |
| 141 | 50884 | 1 | SPRING, BRAKE ARM BIAS |
| 144 | 50974 | 1 | O-RING, 2.987 X 0.103 |
| 145 | 51157 | 1 | SPRING, RELIEF |
| 146 | 9001214-4400 | 1 | BALL, 7/16 |
| 151 | 50919 | 1 | COMP. SPRING, BRAKE ANTI-DRAG |
| 153 | 9005110-5600 | 1 | PLUG, STRAIGHT THREAD |
| 155 | 70489 | 1 | KIT, FAN/PULLEY |
| | | 1 | PULLEY |
| | | 1 | FAN |
| | | 3 | SCREW |
| | | 1 | HEX NUT 1/2-20 |
| 157 | 50977 | 4 | O-RING, 0.070X0.239 |
| 203 | 70492 | 1 | KIT, SEAL |
| | | 1 | SEAL-LIP |
| | | 1 | SEAL-LIP |
| | | 1 | SEAL-LIP |
| | | 1 | O-RING |
| | | 2 | SEAL 1" ID X 2.0472" X .375" |
| | | 1 | LIP SEAL (.875 I.D. x 1.30 D. x .25) |
| | | 2 | O-RING, .070X.239 |
| | | 2 | SCREW O-RING |
| | | 1 | KIT, O-RING, MANIFOLD |

Hydro-Gear
P.2 of 2. 70480-S3