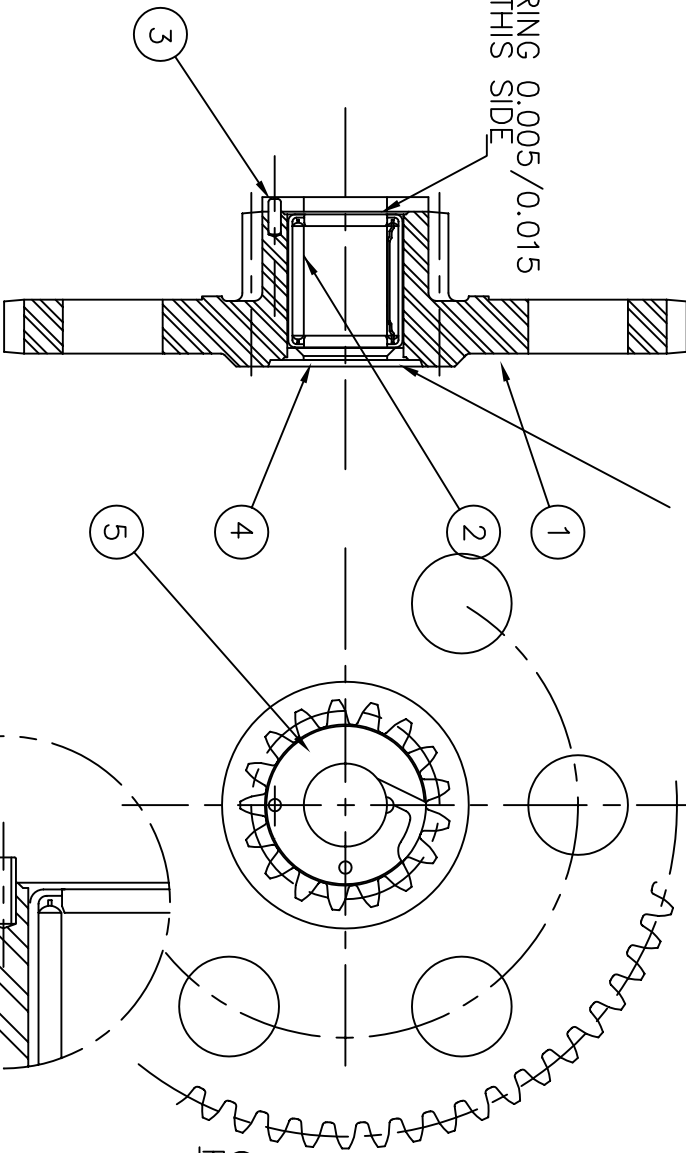
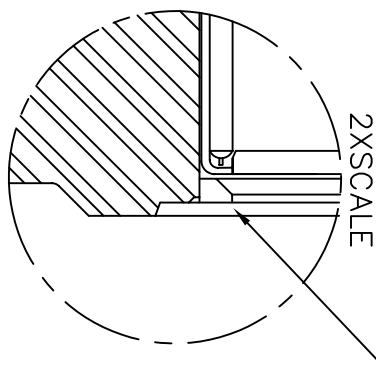
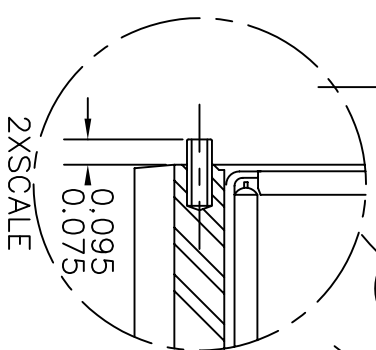


NOTICE - THIS DRAWING CONTAINS PROPRIETARY INFORMATION. IT IS THE PROPERTY OF HYDRO-GEAR, INC. AND IS NOT TO BE REPRODUCED, COPIED, OR DISCLOSED IN WHOLE OR IN PART, WITHOUT WRITTEN AUTHORIZATION FROM HYDRO-GEAR, INC.

GREASE SEAL MUST BE FLUSH TO 0.01 DEPRESSED



ASSY#	ITEM	QTY.	DESCRIPTION	PART #
1	52	1	REDUCTION GEAR(60&17T)	44523
2	47	1	NEEDLE BRG. (JH1016)	44342
3	60	1	3/32X1/4 DOWEL PIN	44346
4	61	1	SEAL7/80DX5/8IDX3/32	44394
5	48	1	THRUST WASHER	44527



GREASE SEAL EDGE MUST PROJECT OUTWARD

PART NO.

CHANGES

PRODUCTION
RELEASE
DATE 12/08/89
DATE 12/08/89
APPR. RHAUSER

NEW FRAME
08/09/91 MAD

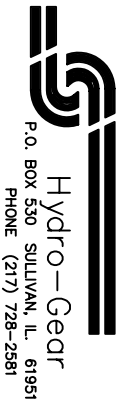
(S1) ADD'D #49&4371) & 59(44125);
ECN #5924
08/02/96 S POPE

(P2) REM'D ITEMS
49 & 59
ADD'D ASSY#
ECN#0894
4-7-03 MS

FORMER PART NO.

PART NO.
62758

CHK
(P2)



Hydro-Gear
P.O. BOX 530 SULLIVAN, IL. 61951
PHONE (217) 728-2581

MATERIAL	SCALE FULL
FINISH	NAME

QTY PER ASSY - (1)	UNLESS SPECIFIED		
DRAWN	DATE	NAME	TOLERANCES
CHECKED	11/13/89	S POPE	0 ±.020
APPR.			.000 ±.010
			.0000 ±.005
			ANGLE ±1

USED ON 210-1000/210-2000
REDUCTION GEAR ASSY.