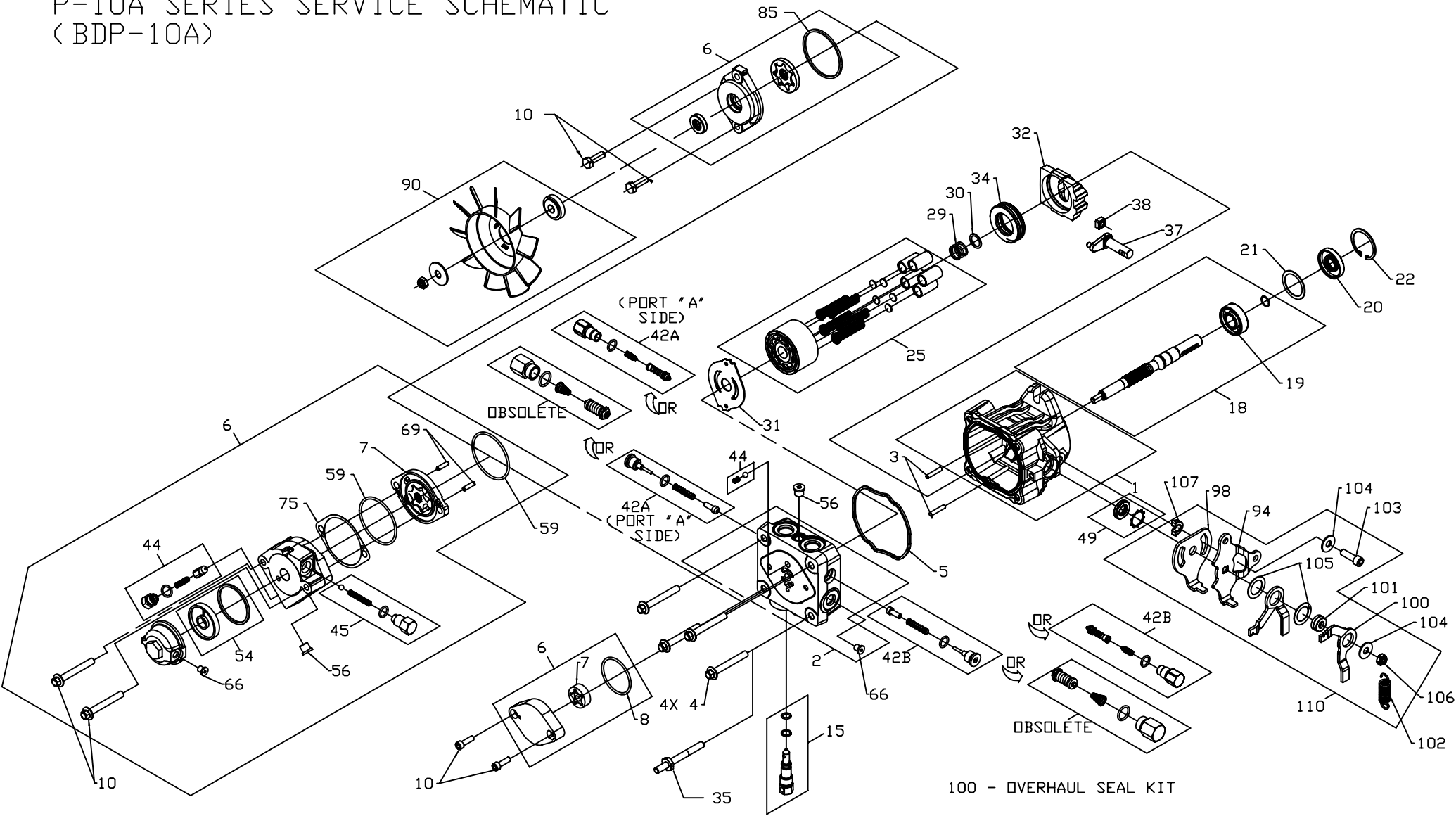
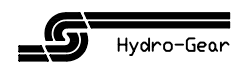


P-10A SERIES SERVICE SCHEMATIC (BDP-10A)

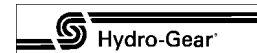


100 - OVERHAUL SEAL KIT



REFERENCE NO.	MODEL NO.	PUMP SHAFT (KIT #18)	HOUSING (KIT #1)	ENDCAP (KIT #2)	BYPASS VALVE (KIT #15)	CHECK VALVE(LH) (KIT #42B)	CHECK VALVE(RH) (KIT #42A)	TRUNNION ARM	CHARGE PUMP (KIT #6)	CHARGE RELIEF (KIT #44)	INPUT ROTATION	ADDITIONAL	REFERENCE NO.
BDP-10A-100	PG-1DQQ-DY1X-XXXX	70521	70516	70517	2513030	2510027	2510027	LH	2513027	70403	CW		BDP-10A-100
BDP-10A-101	PG-1DQP-DY1X-XXXX	70521	70516	70517	2513030	2510062	2510027	LH	2513027	70403	CW		BDP-10A-101
BDP-10A-102	PG-4DQQ-DZ1X-XXXX	70727	70516	70517	2513030	2510027	2510027	LH	2513027	70403	CW	CA 45007	BDP-10A-102
BDP-10A-103	PG-4DCC-DZ1X-XXXX	70727	70516	70517	2513030	70743	70743	LH	2513027	70403	CW	CA 45007	BDP-10A-103
BDP-10A-105	PG-1DCC-DA1X-XXXX	70521	70797	70517	2513030	70743	70743	LH	2513027	70403	CW	RTN 70794	BDP-10A-105
BDP-10A-200	PG-1BQQ-DY1X-XXXX	70521	70516	70517	2513030	2510027	2510027	RH	2513027	70403	CW		BDP-10A-200
BDP-10A-201	PG-DAQQ-DY1X-XXXX	70523	70516	70517	2513030	2510027	2510027	RH	2513027	70403	CW		BDP-10A-201
BDP-10A-203	PG-1AQP-DY1X-XXXX	70521	70516	70517	2513030	2510062	2510027	RH	2513027	70403	CW		BDP-10A-203
BDP-10A-204	PG-4BQQ-DZ1X-XXXX	70727	70516	70517	2513030	2510027	2510027	RH	2513027	70403	CW	CA 45007	BDP-10A-204
BDP-10A-205	PG-4BCC-DZ1X-XXXX	70727	70516	70517	2513030	70743	70743	RH	2513027	70403	CW	CA 45007	BDP-10A-205
BDP-10A-207	PG-DACC-DY1X-XXXX	70523	70516	70517	2513030	70743	70743	RH	2513027	70403	CW		BDP-10A-207
BDP-10A-208	PG-DBJJ-DY1X-XXXX	70523	70516	70517	2513030	70840	70840	RH	2513027	70403	CW		BDP-10A-208
BDP-10A-209	PG-FBLL-NY1X-XXXX	70726	70516	70623	2513030	70842	70842	RH	70622	70403	CW		BDP-10A-209
BDP-10A-211	PG-1AEF-DY1X-XXXX	70521	70516	70517	2513030	70837	70836	RH	2513027	70403	CW		BDP-10A-211
BDP-10A-213	PG-1BCC-DA1X-XXXX	70521	70797	70517	2513030	70743	70743	RH	2513027	70403	CW	RTN 70794	BDP-10A-213
BDP-10A-214	PG-3BNQ-NY11-XXXX	70620	70516	70623	2513030	2510027	2510050	RH	70622	70403	CW	FAN 70793	BDP-10A-214
BDP-10A-215	PG-1BEE-DY2X-XXXX	70521	70516	70517	2513031	70836	70836	RH	2513027	70403	CW		BDP-10A-215
BDP-10A-216	PG-3BHH-NY11-XXXX	70620	70516	70623	2513030	70839	70839	RH	70622	70403	CW	FAN 70793	BDP-10A-216
BDP-10A-290*												*MODEL OBSOLETE	BDP-10A-290
SUPERSEDE WITH BDP-10A-292*	PG-1AAA-DY1X-XXXX	70521	70516	70517	2513030	70741	70741	RH	2513027	70403	CW	*MODEL OBSOLETE	BDP-10A-292
SUPERSEDE WITH BDP-10A-293*	PG-1BCC-DY1X-XXXX	70521	70516	70517	2513030	70743	70743	RH	2513027	70403	CW	*MODEL OBSOLETE	BDP-10A-293
SUPERSEDE WITH BDP-10A-294*	PG-DBAA-DY1X-XXXX	70523	70516	70517	2513030	70741	70741	RH	2513027	70403	CW	*MODEL OBSOLETE	BDP-10A-294
SUPERSEDE WITH BDP-10A-294*	PG-FBCC-NY1X-XXXX	70726	70516	70623	2513030	70743	70743	RH	70622	70403	CW	FAN 70632 SEPARATE	BDP-10A-294
BDP-10A-300	PG-1KQQ-DY1X-XXXX	70521	70516	70517	2513030	2510027	2510027	LH	2513027	70403	CCW		BDP-10A-300
BDP-10A-301	PG-DKQQ-DY1X-XXXX	70523	70516	70517	2513030	2510027	2510027	LH	2513027	70403	CCW		BDP-10A-301
BDP-10A-302	PG-DJQQ-DY1X-XXXX	70523	70516	70517	2513030	2510027	2510027	LH	2513027	70403	CCW		BDP-10A-302
BDP-10A-303	PG-1KRQ-DY1X-XXXX	70521	70516	70517	2513030	2510027	2510034	LH	2513027	70403	CCW		BDP-10A-303
BDP-10A-304	PG-1KNQ-DY1X-XXXX	70521	70516	70517	2513030	2510027	2510050	LH	2513027	70403	CCW		BDP-10A-304
BDP-10A-305	PG-1JQQ-DY1X-XXXX	70521	70516	70517	2513030	2510027	2510027	LH	2513027	70403	CCW		BDP-10A-305
BDP-10A-306	PG-3KQQ-NY1X-XXXX	70620	70516	70623	2513030	2510027	2510027	LH	70622	70403	CCW		BDP-10A-306
BDP-10A-307	PG-1KQQ-DY2X-XXXX	70521	70516	70517	N/A	2510027	2510027	LH	2513027	70403	CCW		BDP-10A-307
BDP-10A-308	PG-4KQQ-DY1X-XXXX	70727	70516	70517	2513030	2510027	2510027	LH	2513027	70403	CCW		BDP-10A-308
BDP-10A-309	PG-1JQN-DY1X-XXXX	70521	70516	70517	2513030	2510050	2510027	LH	2513027	70403	CCW		BDP-10A-309
BDP-10A-310	PG-3JQC-NY11-XXXX	70620	70516	70623	2513030	70743	70743	LH	70622	70403	CCW		BDP-10A-310
BDP-10A-312	PG-3KCC-NY1X-XXXX	70620	70516	70623	2513030	70743	70743	LH	70622	70403	CCW		BDP-10A-312
BDP-10A-313	PG-DJCC-DY1X-XXXX	70523	70516	70517	2513030	70743	70743	LH	2513027	70403	CCW		BDP-10A-313
BDP-10A-314	PG-3KQQ-NA1X-XXXX	70620	70797	70623	2513030	2510027	2510027	LH	70622	70403	CCW	RTN 70794	BDP-10A-314
BDP-10A-316	PG-1KCC-DY1X-XXXX	70521	70516	70517	2513030	70743	70743	LH	2513027	70403	CCW		BDP-10A-316
BDP-10A-317	PG-1JBC-DY1X-XXXX	70521	70516	70517	2513030	70743	70742	LH	2513027	70403	CCW		BDP-10A-317
BDP-10A-318	PG-1KCC-DA1X-XXXX	70521	70797	70517	2513030	70743	70743	LH	2513027	70403	CCW	RTN 70794	BDP-10A-318
BDP-10A-319	PG-1JQQ-DY1X-XXXX	70521	70516	70517	2513030	2510027	2510027	LH	2513027	70403	CCW		BDP-10A-319
BDP-10A-320	PG-1KQQ-DA1X-XXXX	70521	70797	70517	2513030	2510027	2510027	LH	2513027	70403	CCW	RTN 70794	BDP-10A-320
BDP-10A-321	PG-1JFE-DY1X-XXXX	70521	70516	70517	2510030	70836	70837	LH	2513027	70403	CCW		BDP-10A-321
BDP-10A-323	PG-1KQQ-DB1X-XXXX	70521	70797	70517	2513030	2510027	2510027	LH	2513027	70403	CCW	RTN 70794	BDP-10A-323
BDP-10A-324	PG-1KRA-DY1X-XXXX	70521	70516	70517	2513030	70741	2510034	LH	2513027	70403	CCW		BDP-10A-324
BDP-10A-325	PG-1KQR-DY1X-XXXX	70521	70516	70517	2513030	2510034	2510027	LH	2513027	70403	CCW		BDP-10A-325
BDP-10A-326	PG-1KBB-DA1X-XXXX	70521	70797	70517	2513030	70742	70742	LH	2513027	70403	CCW	RTN 70794	BDP-10A-326
BDP-10A-327	PG-3KCC-NB12-XXXX	70620	70797	70623	2513030	70743	70743	LH	70622	70403	CCW	RTN70794 FAN70811	BDP-10A-327
BDP-10A-330*												*MODEL OBSOLETE	BDP-10A-330
SUPERSEDE WITH BDP-10A-331	PG-1KAN-DY1X-XXXX	70521	70516	70517	2513030	2510050	70741	LH	2513027	70403	CCW		BDP-10A-331
BDP-10A-331	PG-3KCC-NA1X-XXXX	70620	70797	70623	2513030	70743	70743	LH	70622	70403	CCW	RTN70794	BDP-10A-331
BDP-10A-332	PG-1KJJ-DY1X-XXXX	70521	70516	70517	2513030	70840	70840	LH	2513027	70403	CCW		BDP-10A-332
BDP-10A-360*												*MODEL OBSOLETE	BDP-10A-360
SUPERSEDE WITH BDP-10A-360*	PG-1KQC-DY1X-XXXX	70521	70516	70517	2513030	70743	2510027	LH	2513027	70403	CCW		BDP-10A-360

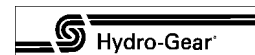
* REFER TO SERVICE BULLETIN 51899



P-10A

REFERENCE NO.	MODEL NO.	PUMP SHAFT (KIT #18)	HOUSING (KIT #1)	ENDCAP (KIT #2)	BYPASS VALVE (KIT #15)	CHECK VALVE(LH) (KIT #42B)	CHECK VALVE(RH) (KIT #42A)	TRUNNION ARM	CHARGE PUMP (KIT #6)	CHARGE RELIEF (KIT #44)	INPUT ROTATION	ADDITIONAL	REFERENCE NO.
BDP-10A-361*												*MODEL OBSOLETE	BDP-10A-361
SUPERSEDE WITH	PG-1JQC-DY1X-XXXX	70521	70516	70517	2513030	70743	2510027	LH	2513027	70403	CCW		
BDP-10A-362*												*MODEL OBSOLETE	BDP-10A-362
SUPERSEDE WITH	PG-3KQC-NY1X-XXXX	70620	70516	70623	2513030	70743	2510027	LH	70622	70403	CCW	FAN 70629 SEPARATE	
BDP-10A-363*												*MODEL OBSOLETE	BDP-10A-363
SUPERSEDE WITH	PG-3JQC-NY1X-XXXX	70620	70516	70623	2513030	70743	2510027	LH	70622	70403	CCW	FAN 70629 SEPARATE	
BDP-10A-364*												*MODEL OBSOLETE	BDP-10A-364
BDP-10A-366*													BDP-10A-366
SUPERSEDE WITH	PG-1JPC-DY1X-XXXX	70521	70516	70517	2513030	70743	2510062	LH	2510327	70403	CCW		
BDP-10A-390*												*MODEL OBSOLETE	BDP-10A-390
SUPERSEDE WITH	PG-1KCC-DY1X-XXXX	70521	70516	70517	2513030	70743	70743	LH	25130327	70403	CCW		
BDP-10A-400	PG-1HQQ-DY1X-XXXX	70521	70516	70517	2513030	2510027	2510027	RH	2513027	70403	CCW		BDP-10A-400
BDP-10A-401	PG-DHQQ-DY1X-XXXX	70523	70516	70517	2513030	2510027	2510027	RH	2513027	70403	CCW		BDP-10A-401
BDP-10A-402	PG-1HNP-DY1X-XXXX	70521	70516	70517	2513030	2510062	2510050	RH	2513027	70403	CCW		BDP-10A-402
BDP-10A-403	PG-1HRQ-DY1X-XXXX	70521	70516	70517	2513030	2510027	2510034	RH	2513027	70403	CCW		BDP-10A-403
BDP-10A-404	PG-1GQN-DY1X-XXXX	70521	70516	70517	2513030	2510050	2510027	RH	2513027	70403	CCW		BDP-10A-404
BDP-10A-405	PG-1HNQ-DY1X-XXXX	70521	70516	70517	2513030	2510027	2510050	RH	2513027	70403	CCW		BDP-10A-405
BDP-10A-406	PG-DGQQ-DY1X-XXXX	70523	70516	70517	2513030	2510027	2510027	RH	2513027	70403	CCW		BDP-10A-406
BDP-10A-407	PG-1GNQ-DY1X-XXXX	70521	70516	70517	2513030	2510027	2510050	RH	2513027	70403	CCW		BDP-10A-407
BDP-10A-408	PG-1GQQ-DYZX-XXXX	70521	70516	70517	N/A	2510027	2510027	RH	2513027	70403	CCW		BDP-10A-408
BDP-10A-410	PG-3HQQ-NY1X-XXXX	70620	70516	70623	2513030	2510027	2510027	RH	70622	70403	CCW		BDP-10A-410
BDP-10A-411	PG-4HQN-DY1X-XXXX	70727	70516	70517	251303	2510050	2510027	RH	2513027	70403	CCW		BDP-10A-411
BDP-10A-413	PG-4GQQ-DY1X-XXXX	70727	70516	70517	251303	2510027	2510027	RH	2513027	70403	CCW		BDP-10A-413
BDP-10A-414	PG-1GNP-DY1X-XXXX	70521	70516	70517	251303	2510062	2510050	RH	2513027	70403	CCW		BDP-10A-414
BDP-10A-416	PG-3GQC-NY1X-XXXX	70620	70516	70623	2513030	70743	70743	RH	70622	70403	CCW		BDP-10A-416
BDP-10A-418	PG-1HCC-DY1X-XXXX	70521	70516	70517	2513030	70743	70743	RH	2513027	70403	CCW		BDP-10A-418
BDP-10A-419	PG-1GCC-DY1X-XXXX	70521	70516	70517	2513030	70743	70743	RH	2513027	70403	CCW		BDP-10A-419
BDP-10A-421	PG-1HQN-DY1X-XXXX	70521	70516	70517	2513030	2510050	2510027	RH	2513027	70403	CCW		BDP-10A-421
BDP-10A-423	PG-3HCC-NY1X-XXXX	70620	70516	70623	2513030	70743	70743	RH	70622	70403	CCW		BDP-10A-423
BDP-10A-424	PG-3HQQ-NA1X-XXXX	70620	70797	70623	2513030	2510027	2510027	RH	70622	70403	CCW	RTN 70794	BDP-10A-424
BDP-10A-426	PG-3GCC-NY1X-XXXX	70620	70516	70623	2513030	70743	70743	RH	70622	70403	CCW		BDP-10A-426
BDP-10A-427	PG-1GAB-DY1X-XXXX	70521	70516	70517	2513030	70742	70741	RH	2513027	70403	CCW		BDP-10A-427
BDP-10A-429	PG-1HBC-DY1X-XXXX	70521	70516	70517	2513030	70743	70742	RH	2513027	70403	CCW		BDP-10A-429
BDP-10A-430*												*MODEL OBSOLETE	BDP-10A-430
SUPERSEDE WITH	PG-1HAN-DY1X-XXXX	70521	70516	70517	2513030	2510050	70741	RH	2513027	70403	CCW		
BDP-10A-431*												*MODEL OBSOLETE	BDP-10A-431
SUPERSEDE WITH	PG-1HCQ-DY1X-XXXX	70521	70516	70517	2513030	2510027	70743	RH	2513027	70403	CCW		
BDP-10A-432*												*MODEL OBSOLETE	BDP-10A-432
SUPERSEDE WITH	PG-3GAQ-NZ1X-XXXX	70620	70516	70623	2513030	2510062	70741	RH	70622	70403	CCW	CA 45007, FAN 70632 SEPARATE	
BDP-10A-433*												*MODEL OBSOLETE	BDP-10A-433
SUPERSEDE WITH	PG-1GAP-DY1X-XXXX	70521	70516	70517	2513030	2510062	70741	RH	2513027	70403	CCW		

* REFER TO SERVICE BULLETIN 51899



P-10A

REFERENCE NO.	MODEL NO.	PUMP SHAFT (KIT #18)	HOUSING (KIT #1)	ENDCAP (KIT #2)	BYPASS VALVE (KIT #15)	CHECK VALVE(LH) (KIT #42B)	CHECK VALVE(RH) (KIT #42A)	TRUNNION ARM	CHARGE PUMP (KIT #6)	CHARGE RELIEF (KIT #44)	INPUT ROTATION	ADDITIONAL	REFERENCE NO.
BDP-10A-435	PG-1HCC-DA1X-XXXX	70521	70797	70517	2513030	70743	70743	RH	2513027	70403	CCW	RTN 70794	BDP-10A-435
BDP-10A-437	PG-1GQQ-DY1X-XXXX	70521	70516	70517	2513030	2510027	2510027	RH	2513027	70403	CCW		BDP-10A-437
BDP-10A-438	PG-1HQQ-DB1X-XXXX	70521	70797	70517	2513030	2510027	2510027	RH	2513027	70403	CCW	RTN 70794	BDP-10A-438
BDP-10A-439	PG-1GAC-DY1X-XXXX	70521	70516	70517	2513030	70743	70741	RH	2513027	70403	CCW		BDP-10A-439
BDP-10A-440	PG-1HCA-DY1X-XXXX	70521	70516	70517	2513030	70741	70743	RH	2513027	70403	CCW		BDP-10A-440
BDP-10A-441	PG-3HCC-NE1X-XXXX	70620	70797	70623	2513030	70743	70743	RH	70622	70403	CCW	RTN 70847	BDP-10A-441
BDP-10A-442	PG-3GCC-NY12-XXXX	70620	70516	70623	2513030	70743	70743	RH	70622	70403	CCW	FAN 70811	BDP-10A-442
BDP-10A-443	PG-1GQQ-DB1X-XXXX	70521	70797	70517	2513030	2510027	2510027	RH	70622	70403	CCW	RTN 70794	BDP-10A-443
BDP-10A-445	PG-1GCA-DY1X-XXXX	70521	70516	70517	2513030	70741	70743	RH	2513027	70403	CCW		BDP-10A-445
BDP-10A-446	PG-1HKK-DA1X-XXXX	70521	70797	70517	2513030	70841	70841	RH	2513027	70403	CCW	RTN 70794	BDP-10A-446
BDP-10A-447	PG-1HRA-DY1X-XXXX	70521	70516	70517	2513030	70741	2510034	RH	2513027	70403	CCW		BDP-10A-447
BDP-10A-448	PG-1HQR-DY1X-XXXX	70521	70516	70517	2513030	2510034	2510027	RH	2513027	70403	CCW		BDP-10A-448
BDP-10A-449	PG-1HBB-DA1X-XXXX	70521	70797	70517	2513030	70742	70742	RH	2513027	70403	CCW	RTN 70794	BDP-10A-449
BDP-10A-450	PG-1GEF-DY1X-XXXX	70521	70516	70517	2513030	70837	70836	RH	2513027	70403	CCW		BDP-10A-450
BDP-10A-451	PG-3HCC-NA12-XXXX	70621	70797	70623	2513030	70743	70743	RH	70622	70403	CCW	RTN70794 FAN70811	BDP-10A-451
BDP-10A-453	PG-1HEE-DY2X-XXXX	70521	70516	70517	2513031	70836	70836	RH	2513027	70403	CCW		BDP-10A-453
BDP-10A-454	PG-3HCC-NA1X-XXXX	70621	70797	70623	2513030	70743	70743	RH	2513027	70403	CCW	RTN 70794	BDP-10A-454
BDP-10A-460*												*MODEL OBSOLETE	BDP-10A-460
SUPERSEDE WITH BDP-10A-461*	PG-1HQC-DY1X-XXXX	70521	70516	70517	2513030	70743	2510027	RH	2513027	70403	CCW		
												*MODEL OBSOLETE	BDP-10A-461
SUPERSEDE WITH BDP-10A-462*	PG-1GQC-DY1X-XXXX	70521	70516	70517	2513030	70743	2510027	RH	2513027	70403	CCW		
												*MODEL OBSOLETE	BDP-10A-462
SUPERSEDE WITH BDP-10A-463*	PG-3HQC-NY1X-XXXX	70620	70516	70623	2513030	70743	2510027	RH	70622	70403	CCW	FAN 70629 SEPARATE	
												*MODEL OBSOLETE	BDP-10A-463
SUPERSEDE WITH BDP-10A-464*	PG-3GQC-NY1X-XXXX	70620	70516	70623	2513030	70743	2510027	RH	70622	70403	CCW	FAN 70629 SEPARATE	
												*MODEL OBSOLETE	BDP-10A-464
SUPERSEDE WITH BDP-10A-466*	PG-1HPC-DY1X-XXXX	70521	70516	70517	2513030	70743	2510062	RH	2513027	70403	CCW		
												*MODEL OBSOLETE	BDP-10A-466
SUPERSEDE WITH BDP-10A-490*	PG-1HPC-DY1X-XXXX	70521	70516	70517	2513030	70743	2510062	RH	2513027	70403	CCW		
												*MODEL OBSOLETE	BDP-10A-490
SUPERSEDE WITH BDP-10A-600	PG-1HCC-DY1X-XXXX	70521	70516	70517	2513030	70743	70743	RH	2513027	70403	CCW		
BDP-10A-600	PG-2CNN-HY1X-XXXX	70522	70516	70519	2513030	2510050	2510050	LH	70577	2510081	CW		BDP-10A-600
BDP-10A-701	PG-2BNN-HY1X-XXXX	70522	70516	70519	2513030	2510050	2510050	RH	70577	2510081	CW		BDP-10A-701
BDP-10A-703	PG-2ACC-HA1X-XXXX	70522	70797	70519	2513030	70743	70743	RH	70577	2510081	CW	RTN 70794	BDP-10A-703
BDP-10A-801	PG-2KCC-TC1X-XXXX	70522	70797	70519	2513030	70743	70743	LH	TBD.	2510081	CCW	RTN 70846	BDP-10A-801
BDP-10A-901	PG-2HCC-HY1X-XXXX	70522	70516	70519	2513030	70743	70743	RH	70577	2510081	CCW		BDP-10A-901
BDP-10A-902	PG-2HCC-UY1X-XXXX	70522	70516	70519	2513030	70743	70743	RH	70582	2510081	CCW		BDP-10A-902
BDP-10A-903	PG-2GCC-HA1X-XXXX	70522	70797	70519	2513030	70743	70743	RH	70577	2510081	CCW	RTN 70794	BDP-10A-903
BDP-10A-990*												*MODEL OBSOLETE	BDP-10A-990
SUPERSEDE WITH	PG-2HCC-HY1X-XXXX	70522	70516	70517	2513030	70743	70743	RH	70577	2510081	CCW		

* REFER TO SERVICE BULLETIN 51899

P-10A

ITEM #	HYDRO-GEAR PART #	DESCRIPTION
1	70516	HOUSING KIT
	70797	RTN HOUSING KIT
2	70517	END CAP KIT W/ POPPETS & STD CHG
	70518	END CAP KIT W/ SCR'S & STD CHG
	70519	END CAP KIT W/ POPPETS & AUX CHG
	70520	END CAP KIT W/ SCR'S & AUX CHG
	70573	END CAP KIT (STD CHG) LH:SCR / RH:POPPET
	70574	END CAP KIT (STD CHG) LH:POPPET / RH:SCR
	70575	END CAP KIT (AUX CHG) LH:SCR / RH:POPPET
	70576	END CAP KIT (AUX CHG) LH:POPPET / RH:SCR
	70621	END CAP KIT (STD CHG) LH:SCR/RH:POPPET, THRU
	70623	END CAP KIT (STD CHG) W/POPPETS, THRU
	70624	END CAP KIT (STD CHG) W/SCR'S, THRU
	70625	END CAP KIT (STD CHG) LH:POPPET/RH:SCR, THRU
3	50641	STRAIGHT HEADLESS PIN
4	50969	HEX FLANGE BOLT M8-1.25 x 60mm LG
5	51232	HOUSING O-RING
6	2513027	CHARGE PUMP KIT (STD)
	70582	AUX PUMP KIT (AL., 15T SPLINED, 3-7/16 SAE PORTS)
	70622	CHARGE PUMP KIT (STD CHG), THRU
	70577	AUX PUMP KIT (AL., 15T SPLINED, 2-7/16 SAE PORTS)
7	50273	STD GEROTOR ASSEMBLY (.11 cu. In/rev D-DRIVE)
	51049	AUXILIARY GEROTOR & HOUSING ASSEMBLY
8	9004101-1340	O-RING
10	50095	SOCKET HEAD SCREW M6 X 1.0-20mm LG (STD CHARGE)
	50969	HEX FLANGE BOLT M8-1.25 x 60mm (AUX CHARGE)
	9007200-3116	CAP SCREW, HEX 5/16-18 X 1.00 (THRU CHARGE)
		SUPPLIED WITH ITEM #2 ONLY
15	2513030	BYPASS VALVE KIT (BLANK)
	2513031	BYPASS VALVE KIT (.031")
	2510084	BYPASS VALVE KIT (.043")
18	70521	PUMP SHAFT KIT (BLIND 15MM KEYWAY W/ STD CHG)
	70522	PUMP SHAFT KIT (BLIND 15MM KEYWAY W/ AUX CHG)
	70523	PUMP SHAFT KIT (9 TOOTH W/ STD CHG)
	70524	PUMP SHAFT KIT (9 TOOTH W/ AUX CHG)
	70620	PUMP SHAFT KIT (15MM KEYED, STD CHG, THRU)
	70726	PUMP SHAFT KIT (9 TOOTH THRU CHG)
	70727	PUMP SHAFT KIT (TAPERED)
19	50315	BALL BEARING 17 X 40 X 12
20	51161	LIP SEAL 17 X 40 X 7 PTC
22	50329	RETAINING RING
21	50951	SPACER
25	70331	CYLINDER BLOCK KIT
29	2003014	BLOCK SPRING
30	2003017	BLOCK THRUST WASHER
31	51444	VALVE PLATE (STEEL N-TEC: BLACK)
32	2003087	SWASHPLATE
34	50551	BALL THRUST BEARING
35	51530	STUD, TORQUE
37	2003005	TRUNNION ARM
	50807	TRUNNION, RTN
38	2000015	SLOT GUIDE

ITEM #	HYDRO-GEAR PART #	DESCRIPTION
42	2510050	CHECK VALVE KIT (BLANK ORIFICE)
	2510062	CHECK VALVE KIT (.024" ORIFICE)
	2510027	CHECK VALVE KIT (.031" ORIFICE)
	2510034	CHECK VALVE KIT (.044" ORIFICE)
	2510067	SYSTEM CHECK / RELIEF KIT
	70589	SYSTEM CHECK RELIEF KIT (.031" ORIFICE)
	70741	SHOCK VALVE KIT (200 BAR,.205 STEM, .000")
	70742	SHOCK VALVE KIT (200 BAR,.205 STEM, .024")
	70743	SHOCK VALVE KIT (200 BAR,.205 STEM, .031")
	70744	SHOCK VALVE KIT (200 BAR,.205 STEM, .044")
	70836	SHOCK VALVE KIT (160 BAR,.205 STEM, .000")
	70837	SHOCK VALVE KIT (160 BAR,.205 STEM, .024")
	70838	SHOCK VALVE KIT (160 BAR,.205 STEM, .031")
	70839	SHOCK VALVE KIT (160 BAR,.205 STEM, .044")
	70840	SHOCK VALVE KIT (120 BAR,.205 STEM, .000")
	70841	SHOCK VALVE KIT (120 BAR,.205 STEM, .024")
	70842	SHOCK VALVE KIT (120 BAR,.205 STEM, .031")
	70843	SHOCK VALVE KIT (120 BAR,.205 STEM, .044")
	70848	SHOCK VALVE KIT (200 BAR,.135 STEM, .000")
	70849	SHOCK VALVE KIT (200 BAR,.135 STEM, .024")
	70850	SHOCK VALVE KIT (200 BAR,.135 STEM, .031")
	70851	SHOCK VALVE KIT (200 BAR,.135 STEM, .044")
44	70403	CHARGE RELIEF VALVE KIT (1/4" PLASTIC BALL & 50654 SPRING)
	2510081	CHARGE RELIEF VALVE KIT (9/16" SAE PLUG & 3101536 SPRING)
45	2510082	AUX RELIEF VALVE KIT (1/4" STEEL BALL)
	70504	AUX RELIEF VALVE KIT (AUX POPPET)
49	2513043	TRUNNION SEAL / RETAINER KIT
54	2510090	AUXILIARY FILTER KIT
56	9005110-4400	STRAIGHT THREAD PLUG
59	9004100-1430	O-RING
66	9005110-3100	5/16" SAE PLUG
67	50994	FILTER COVER
69	50408	STRAIGHT HEADLESS PIN
75	51148	SHIM - CHARGE PUMP (.002 - RED)
85	51016	R-RING -144
90	70617	HUB / 6" FAN KIT
	70793	HUB / 7" CCW FAN KIT (51601 FAN)
	70811	HUB / 7" CW FAN KIT (51691 FAN)
	70628	HUB / 7" FAN KIT (51230 FAN)
100	70525	OVERHAUL SEAL KIT
101	51396	SPACER RTN
102	51399	SPRING, EXTENSION
103	51616	SCREW, 5/16 X .875 (PATCH)
104	44130	WASHER .34 X .88 X .06
105	51408	WASHER, NYLON
106	50108	NUT, HEX LOCK 5/16-24 UNF (NYLON INSERT)
107	51561	SPACER
110	70794	KIT, RTN, STD
	70846	KIT, RTN, CW
	70847	KIT, RTN, CCW

