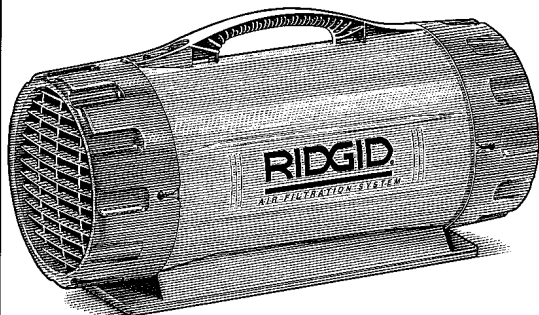


AF2000 OWNERS MANUAL



PORTABLE AIR FILTRATION SYSTEM

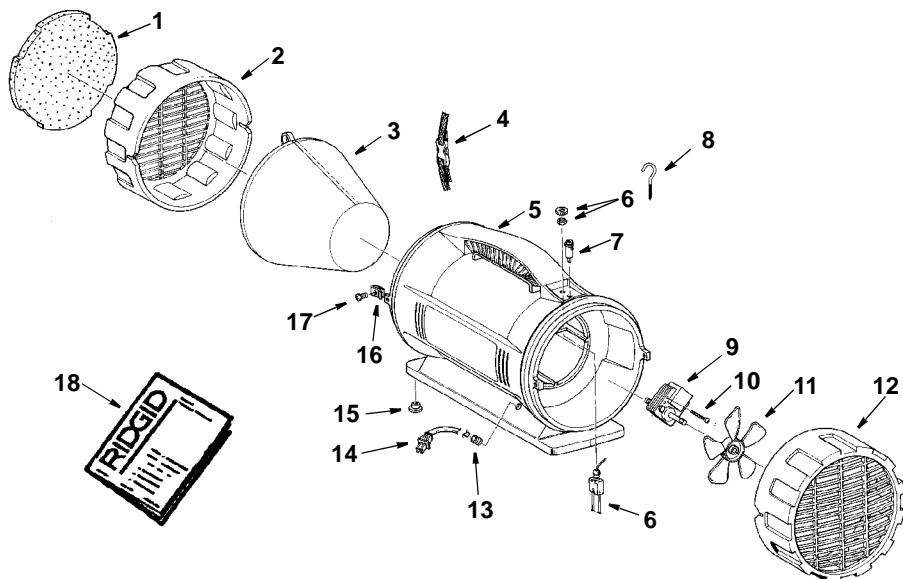
- **Assembly**
- **Operation**
- **Repair Parts**

**QUESTIONS OR COMMENTS?
CALL 1-800-4-RIDGID**

For Your Safety:
Read all instructions carefully

Repair Parts

RIDGID Portable Air Filtration System Model Number AF2000



Always order by part number - Not by key number

Key No.	Part No.	Description
1	RF2001	† Filter Foam
2	825575-1	Cover, Inlet
3	RF2002	† Filter Bag
4	825571	Strap
5	825574-2	Housing
6	825569	Switch
7	825570	Light Pilot
8	*	Screw, Hook
9	825584	Motor

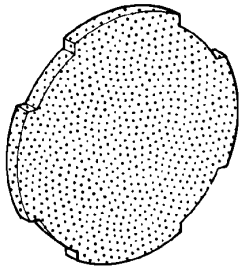
Key No.	Part No.	Description
10	816069-2	Screw Pan Hd. Ty "AB" #6 x 1-3/4
11	825586	Fan Blade
12	825578-1	Cover, Exhaust
13	169123-10	Relief, Strain
14	826369	Cord w/Plug
15	819012	Foot
16	825587	Clip, Nut
17	*	Screw Truss Hd. 10-24 x 3/4
18	SP6153	Owners Manual

† These replacement filters are available where you purchased your Portable Air Filtration System.

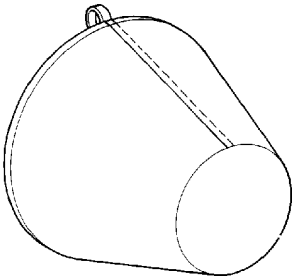
* Standard Hardware Item - May be purchased locally.

Replacement Filters

These replacement filters are available where you purchased your Portable Air Filtration System.

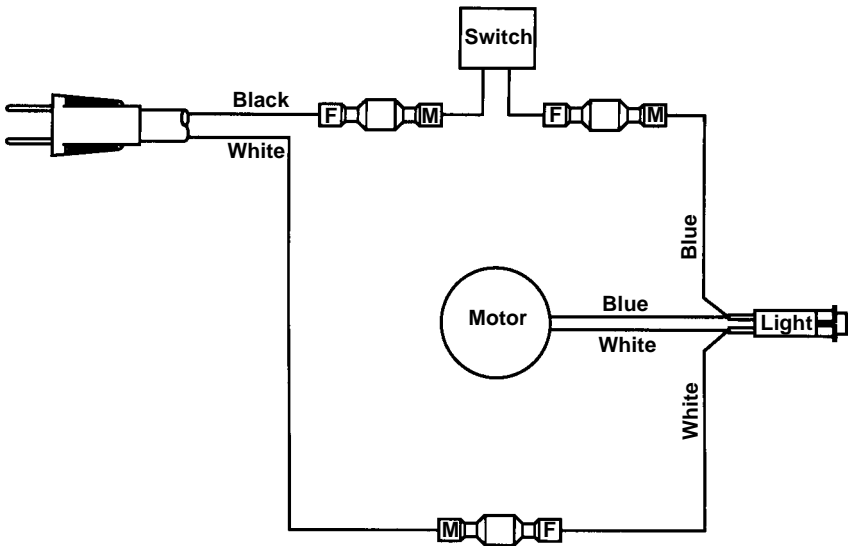


RF2001 Foam Pad



RF2002 Filter Bag

Wiring Diagram



Troubleshooting

Trouble	Probable Cause	Remedy
Unit will not run	No power	Check 120 volt source for power. Check that red power light is on. If not, toggle switch to turn unit "ON".
Air movement is low	Dirty filters	Check both foam filter and internal bag filter to see if they need to be cleaned or replaced.