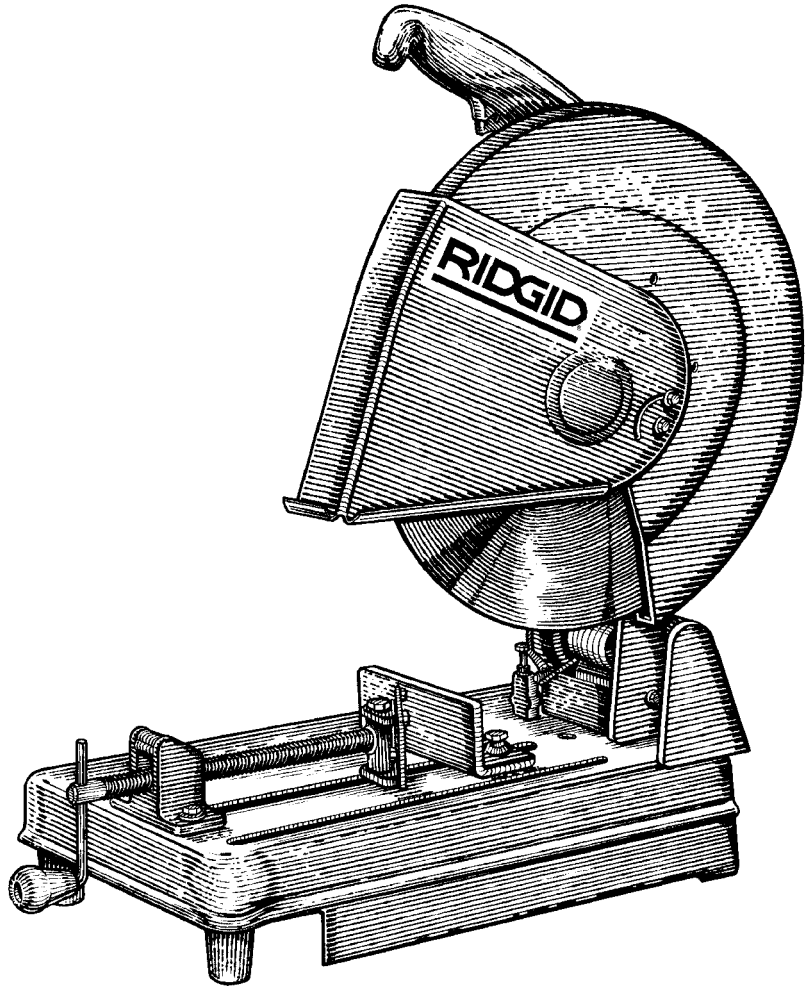


CM1400 OWNER'S MANUAL



14 INCH METAL CUTTING ABRASIVE CUT-OFF MACHINE

- **Assembly**
- **Operation**
- **Repair Parts**

For Your Safety:

Read all instructions carefully

QUESTIONS OR COMMENTS?

CALL 1-800-4-RIDGID

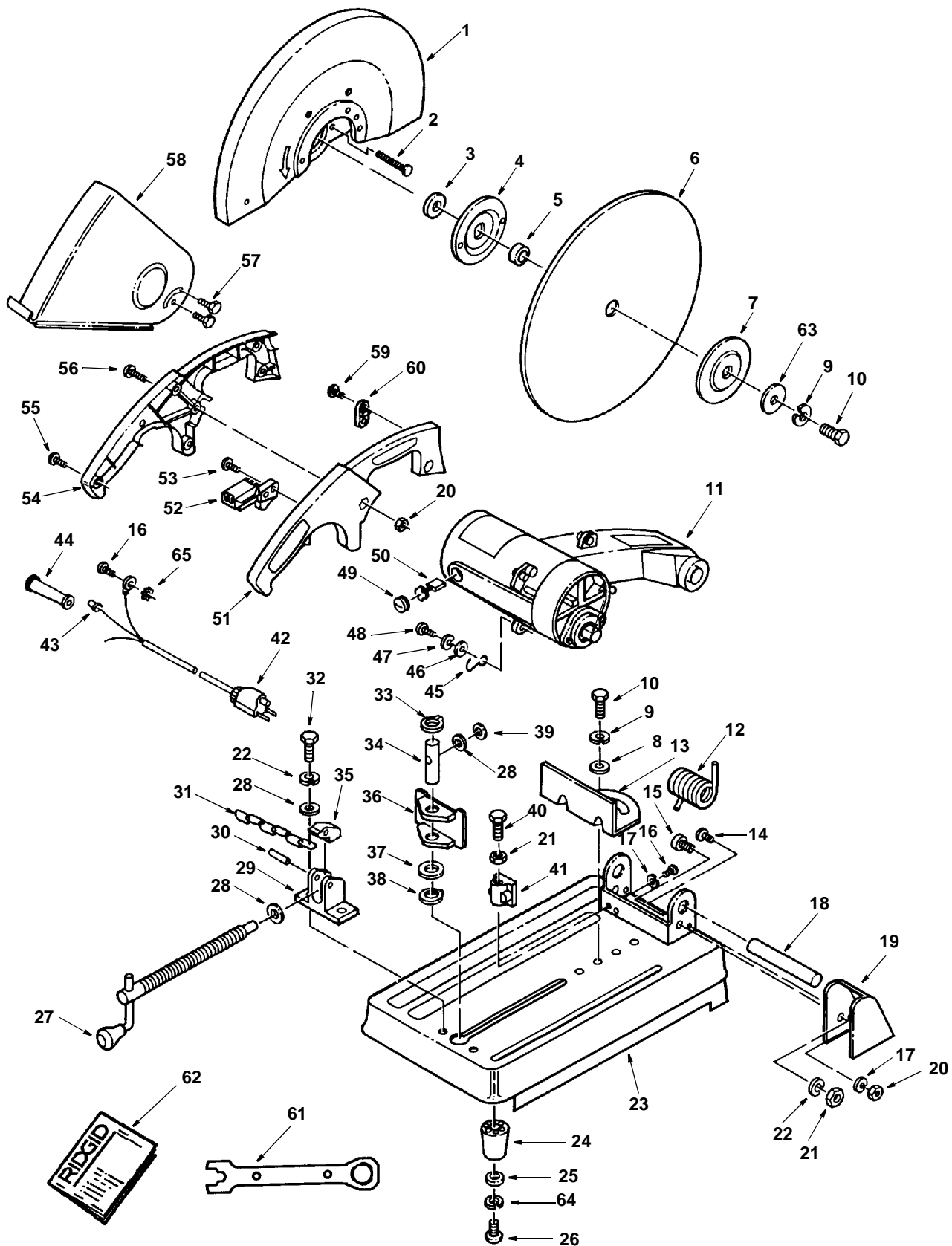
www.ridgidwoodworking.com

Repair Parts

Parts List for RIDGID 14" High Speed Abrasive Cut-Off Machine Model No. CM14000

RIDGID parts are available on-line at www.ridgidparts.com

Figure 1



Repair Parts

Parts List for RIDGID 14" High Speed Abrasive Cut-Off Saw Model No. CM14000

RIDGID parts are available on-line at www.ridgidparts.com

Figure 1

Always order by part number - not by key number

Key No.	Part No.	Description
1	U0028	Upper Guard
2	*	Pan Hd Screw M5 x 60 x 0.8
3	A0338	Spacer
4	A0339	Flange Inner
5	A0340	Outer Spacer
6	*	Wheel Abrasive
7	A0341	Flange Outer
8	*	Washer M10
9	*	Lockwasher M10
10	*	Hex Hd Screw M10 x 25 x 1.5
11	A502030151	Motor
12	A0345	Spring
13	J0100	Plate Scale
14	*	Pan Hd Screw M5 x 16 x 0.8
15	*	Screw Hex Soc Hd M8 x 16 x 1.25
16	*	Pan Hd Screw M5 x 12 x 0.8
17	*	Lockwasher M5
18	A0359	Shaft
19	A0604	Cover
20	*	Nut Hex M5
21	*	Nut Hex M8
22	*	Lockwasher M8
23	X0006	Base
24	A0361	Foot
25	*	Washer M6.4 x 16 x 1.5
26	*	Pan Hd Screw M6 x 25 x 1.0
27	20332	Screw w/Handle
28	*	Washer M8
29	J0099	Support
30	*	Pin Spring M6 x 32
31	*	Chain
32	*	Screw Hex Hd M8 x 25 x 1.25
33	20333	Ring Retaining

Key No.	Part No.	Description
34	A0356	Pin
35	A0385	Nut Thread
36	A0357	Jaw Vice
37	*	Washer M16.5
38	20334	Ring Retaining
39	20335	Ring "E"
40	*	Screw Hex Hd M8 x 30 x 1.25
41	A0381	Block
42	A0355	Cord w/Plug
43	*	Nut Wire
44	A0354	Guard Cord
45	A0386	Hook Chain
46	*	Washer 1/4
47	*	Lockwasher 1/4
48	*	Screw Pan Hd 1/4-20 x 1/2
49	A0352	Cap Brush
50	A0351	Brush
51	X0018	Handle R.H.
52	A0812	Switch
53	*	Screw Pan Hd M4 x 12 x 1.59
54	X0017	Handle L.H.
55	*	Screw Pan Hd. M4 x 16 x 1.59
56	*	Screw Pan Hd M5 x 27 x 0.8
57	*	Screw Hex Hd
58	U0061	Guard Lower
59	*	Screw Pan Hd M4 x 16 x 1.59
60	20324	Clamp Cord
61	A0441	Wrench
62	SP6171	Owners Manual
63	A0342	Washer
64	*	Lockwasher M6
65	*	Lockwasher Ext. M5

* Standard Hardware Item - may be purchased at your nearest RIDGID Dealer.

Troubleshooting Guide

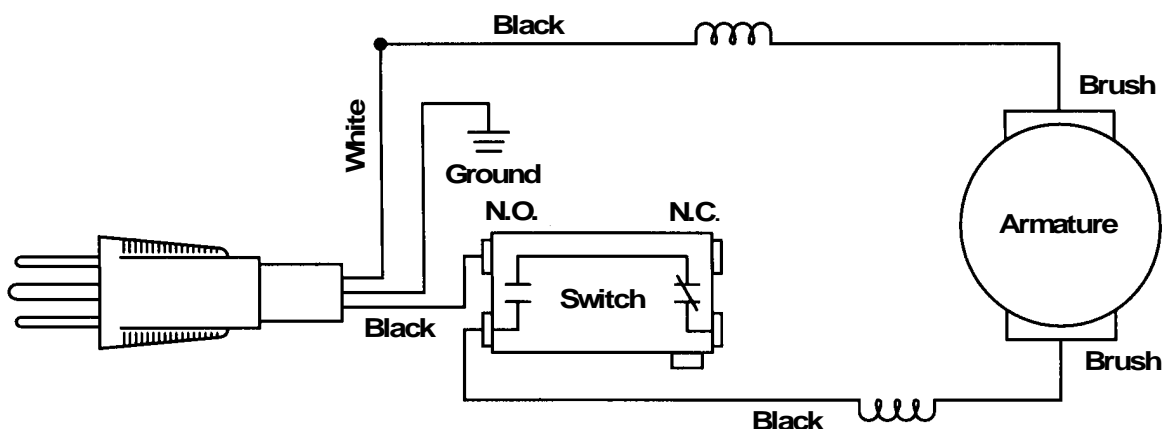
Motor

Problem	Probable Cause	Suggested Corrective Action
Motor does not start.	<ol style="list-style-type: none"> 1. Fuse. 2. Brushes worn. 3. Other. 4. Low voltage 	<ul style="list-style-type: none"> - 15 amp time delay fuse, or circuit breaker. - See "Maintenance" section. - Get authorized RIDGID service. - Check power supply for proper voltage and correct as needed
Brush sparking when switch released.	<ol style="list-style-type: none"> 1. Normal automatic brake working properly. 	<ul style="list-style-type: none"> - None
Motor stalls easily	<ol style="list-style-type: none"> 1. Low voltage 2. Excessive wheel pressure when cutting 	<ul style="list-style-type: none"> - Check power supply for proper voltage and correct as needed - Pull wheel through work at a slower pace

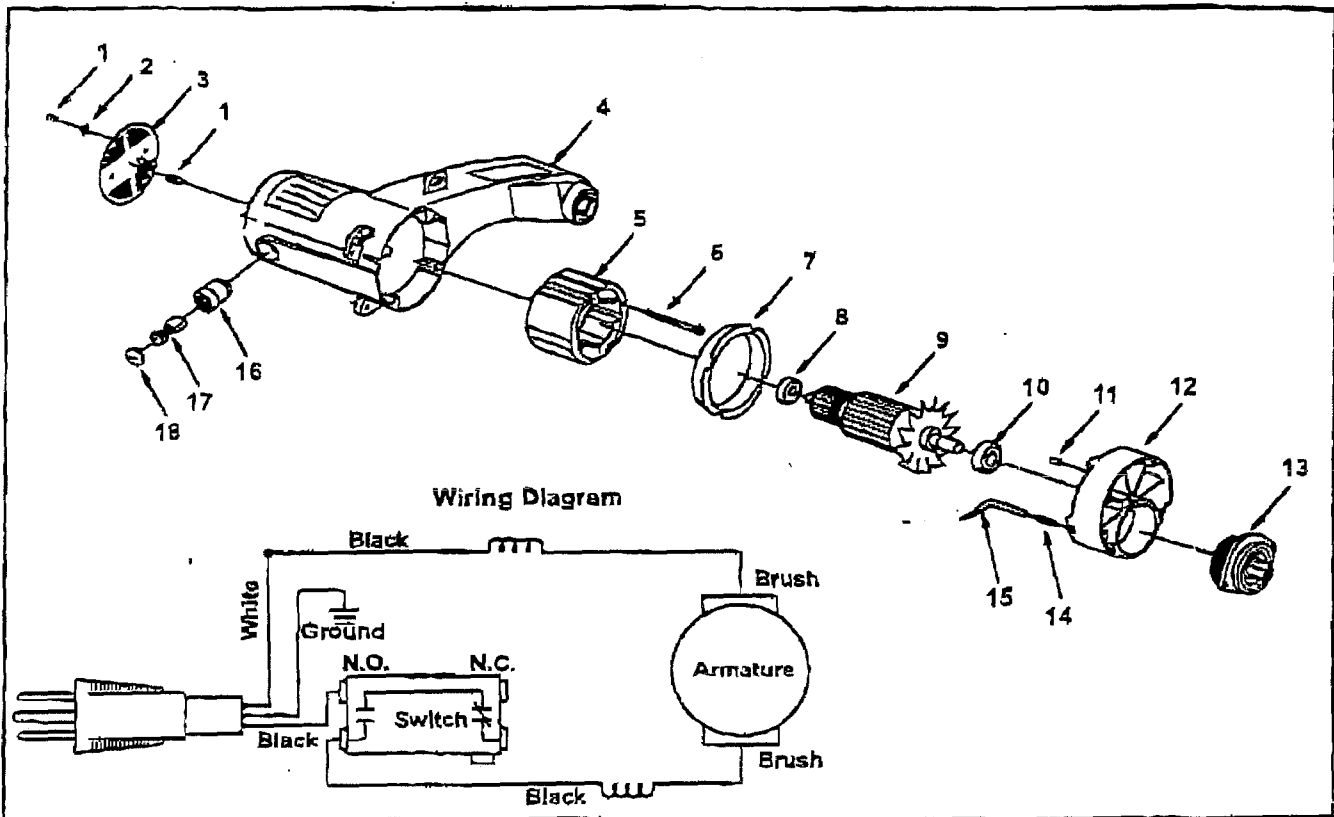
General

Problem	Probable Cause	Suggested Corrective Action
Cut-off wheel hits base or work surface.	<ol style="list-style-type: none"> 1. Misalignment 2. Downstop out of adjustment 	<ul style="list-style-type: none"> - Get Authorized Service. - See "Alignment" section
Cut is not square.	<ol style="list-style-type: none"> 1. Defective wheel 2. Work not positioned properly 3. Excessive wheel pressure 	<ul style="list-style-type: none"> - Replace immediately - Position work properly - Lessen wheel pressure (Don't push down on handle so hard)
Power head won't fully rise or lower guard won't fully close	<ol style="list-style-type: none"> 1. Lubrication needed 2. Part failure 3. Pivot spring or guard spring not replaced properly after service 4. Dirt sticking to stops 	<ul style="list-style-type: none"> - See "Lubrication" section. - Get Authorized Service. - Get Authorized Service. - Inspect/clean stops.
Cut-off wheel binds, jams, burns workpiece. Rough cuts	<ol style="list-style-type: none"> 1. Improper operation 2. Dull cut-off wheel 3. Improper cut-off wheel 	<ul style="list-style-type: none"> - See "Basic Operation" section. - Replace wheel. - Replace with 14" diameter wheel designed for the material being cut.
Tool vibrates or shakes	<ol style="list-style-type: none"> 1. Wheel not round 2. Wheel damaged 3. Wheel loose 4. Other 	<ul style="list-style-type: none"> - Replace wheel. - Replace wheel. - Tighten arbor screw. - Get Authorized Service.
Power head hard to pull/push down	<ol style="list-style-type: none"> 1. Lube needed 	<ul style="list-style-type: none"> See - "Lubrication" section.

Wiring Diagram



**Motor Parts List for RIDGID 14" Cut Off Machine
Model No. CM14000**



When ordering repair parts, always give the following information as shown in this list:

- | | |
|--------------------|---------------------|
| 1. The part number | 3. The model number |
| 2. The part name | 4. The name of item |

Always order by part number - Not by key number

Motor Assembly A502030151

Key No.	Part No.	Description
1	10131004	Screw Pan Hd. M5-12
2	12021005	Lockwasher 5mm
3	0502020317	Cover End
4	0502020104	Housing Motor
5	A502020404	Field
6	10291002	Screw Hex Hd M5-70
7	0502020203	Baffle
8	20010004	Bearing Ball
9	A50200302	Armature

Key No.	Part No.	Description
10	20010005	Bearing Ball
11	14060001	Pin Rubber
12	0502020102	Housing Gear
13	A502030501	Jackshaft Asm.
14	0502020903	Spring
15	0502020902	Plunger
16	0502020205	Holder Brush
17	A0351	Brush
18	A0352	Cap Brush