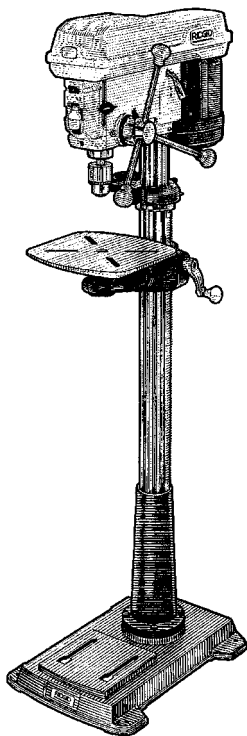


RIDGID®

DP1550 OWNER'S MANUAL



15 INCH FLOOR MODEL DRILL PRESS

Call Us 1st

For any questions about:

- Operation
- Warranty (See back cover)
- Technical Assistance
- Repair Parts

*Please have your Model Number and
Serial Number on hand when calling.*

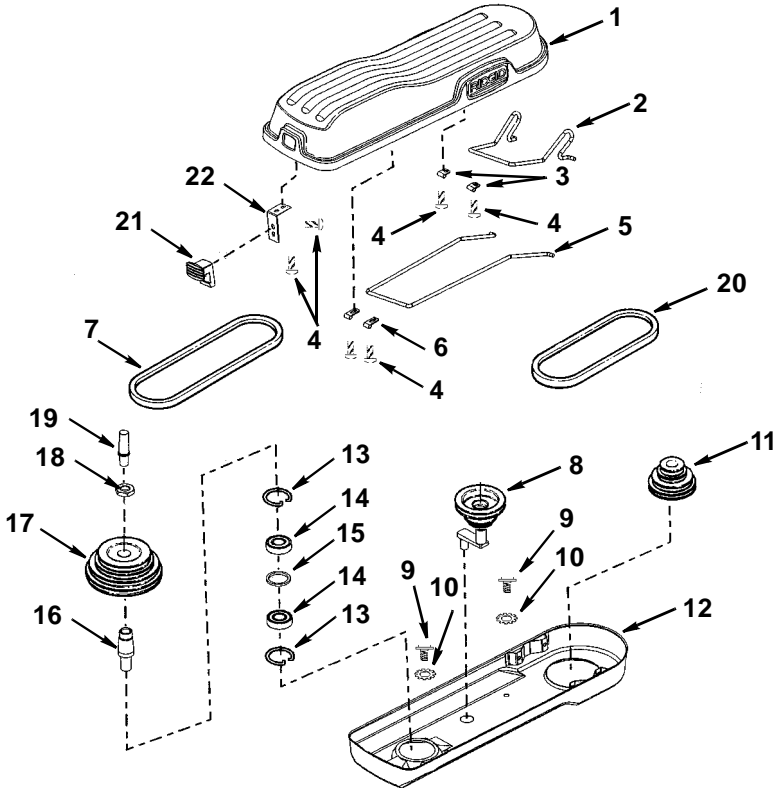
1-800-4-RIDGID

RIDGID Parts.com

POWER TOOL PARTS
& ACCESSORIES

For Your Safety:
Read all instructions carefully
Save this manual for future
reference

Parts List for RIDGID 15" Drill Press Model No. DP15500 Figure 1

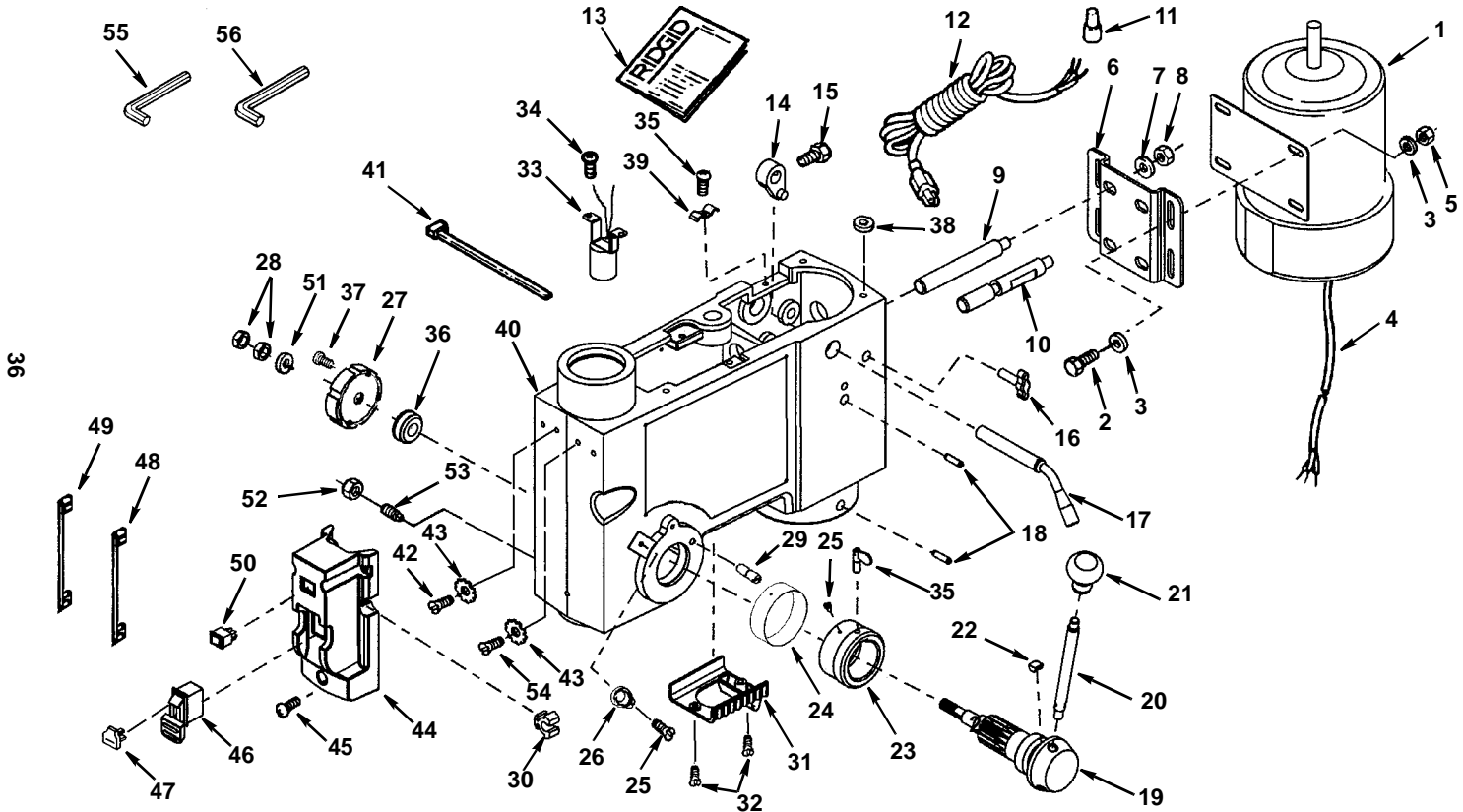


Always order by Part Number - Not by Key Number

Key No.	Part No.	Description	Key No.	Part No.	Description
1	829775	Guard Upper	11	828818	Pulley Asm - Motor
2	828814	Link - Rear	12	828816	Guard Lower
3	828812	Clamp - Rear Link	13	817537	Ring Retaining
4	828932	* Screw Pan Hd M5.5 x 1.8-12	14	817530	Bearing Ball 20 mm
5	828813	Link - Front	15	817536	Spacer
6	828811	Clamp - Front Link	16	821734	Insert Pulley
7	816439-4	Belt Poly V 27"	17	828849	Pulley Spindle
8	828919	Pulley Asm - Idler	18	821742	Nut Pulley
9	817358-1	* Screw Rd Hd Wash M6 x 1.0	19	829688	Cap Spindle
10	820241-5	* Lockwasher Ext M6	20	816439-5	Belt Poly V 25"
			21	828820	Latch
			22	828821	Spring Latch

* Standard hardware item - may be purchased locally.

Parts List for RIDGID 15" Drill Press
Model No. DP15500
Figure 2



Repair Parts

Parts List for RIDGID 15" Drill Press Model No. DP15500

Figure 2

Always order by Part Number -- Not by Key Number

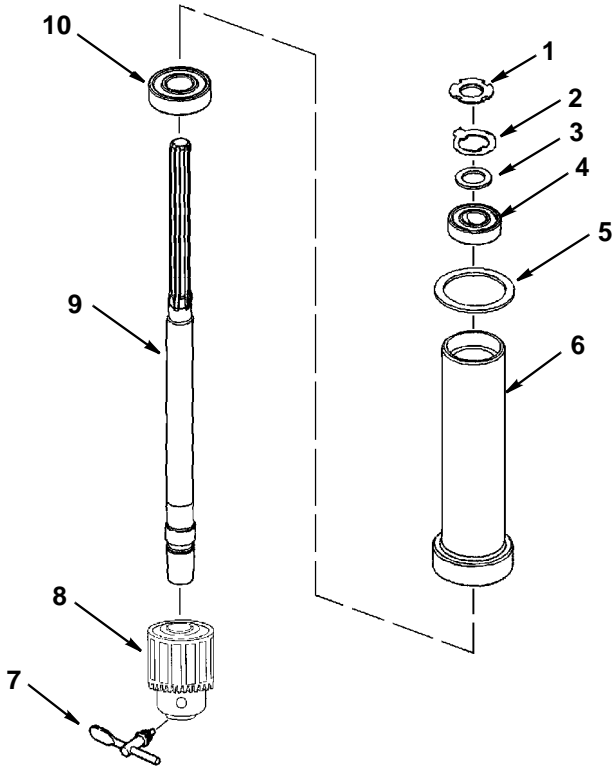
Key No.	Part No.	Description	Key No.	Part No.	Description
1	828929	* Motor	30	828877	Holder Key Chuck
2	820381-2	* Screw Hex Hd. M8 x 1.25-20	31	828963	Lens Assembly
3	821063-2	* Washer M8 x 16 x 1.6	32	820240-6	* Screw Pan Hd. M5 x 0.8-12
4	828940	Cord Motor	33	829595	Socket Bulb Asm.
5	824026-7	* Nut Hex M8 x 1.25	34	820244	* Screw Pan Hd. M6 x 1.0-12
6	817336-1	Mount Motor	35	817343	Lock Depth Screw
7	820383-8	* Lockwasher 12mm	36	828928	Bearing Pinion Shaft
8	820236-9	* Nut Hex M12 x 1.75	37	820378	Screw Soc Cap M4 x 0.7-10
9	817495	Support Motor Bracket	38	820294	Washer Foam
10	817516	Support Motor Bracket	39	829689	Clamp Cord
11	817330	Connector Wire	40	829826	Head Asm.
12	828941	Cord w/Plug	41	810506-3	Tie Wire
13	SP6431	Owners Manual	42	829803	Screw Hex Hd. Gnd. M5 x 0.8
14	817317	Lever Adjusting	43	820241-4	Lockwasher Ext. M5
15	820381-4	* Screw Hex Hd. M8 x 1.25-16	44	828921	Box Switch Asm.
16	817320	Knob Motor Adjusting	45	820240	* Screw Pan Hd. M5 x 0.8-16
17	817494	Handle Belt Tension	46	829787	Switch Locking
18	821750	Screw Hex Soc. Set M10 x 1.5-12	47	826122	Key Switch
19	828904	Hub Asm.	48	829597	Lead 3" Black
20	826445	Rod	49	829597-1	Lead 3" White
21	826441	Knob	50	828923	Switch Rocker
22	817300	Guide Scale	51	829690	Washer 12mm ID Plain
23	829590	Ring Depth Stop	52	820236-8	* Nut Hex M10 x 1.5
24	828876	Scale Depth	53	817308	Screw Sl. Set FI Pt
25	816743-4	* Screw Pan Cr M4 x 0.7 x 8	54	820240-3	* Screw Pan Hd M5 x 0.8-6
26	826057	Pointer	55	813317-6	Wrench Hex "L" 3mm
27	828880	Spring Asm.	56	813317-8	Wrench Hex "L" 5mm
28	821738-3	* Nut Hex M12 x 1.5-8			
29	828917	Pin Stop			

* Standard hardware item - may be purchased locally.

• Any attempt to repair this motor may create a hazard unless repair is done by a qualified service technician.

Repair service is available at your nearest Authorized Service Center.

**Parts List for RIDGID 15" Drill Press
Model No. DP15500
Figure 3**

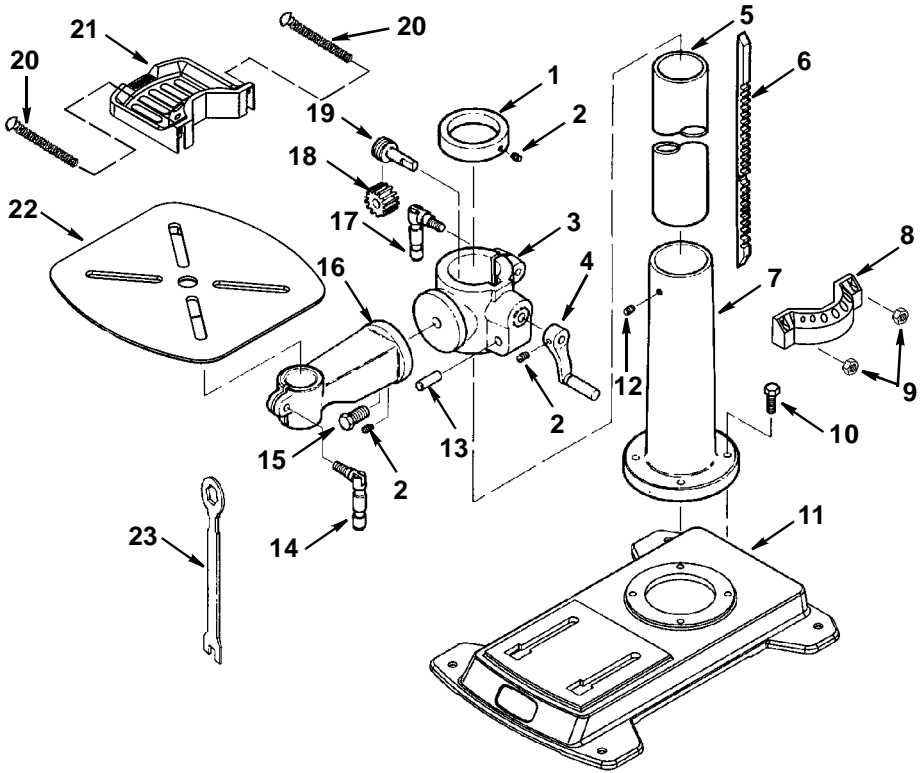


Always order by Part Number - Not by Key Number

Key No.	Part No.	Description	Key No.	Part No.	Description
1	817309	Lock Nut M17 x 1.0	6	828875	Tube Quill
2	817310	Ring Locking	7	817339	Key Chuck
3	817311	Washer	8	817340	Chuck
4	813480	Bearing Ball 17mm	9	828908	Spindle
5	817535	Gasket Quill	10	817529	Bearing Ball

Repair Parts

Parts List for RDIGID 15" Drill Press Model No. DP15500 Figure 4



Key No.	Part No.	Description	Key No.	Part No.	Description
1	817478	Collar Rack	12	821750	* Screw Hex Soc. Set M10 x 1.5-12
2	820245	* Screw Hex Soc. Set M6 x 1.0-10	13	817288	Pin Gear
3	821861-2	Support Table w/Indicator	14	817290-3	Clamp Table
4	826439	Crank (Includes Set Screw)	15	821732	Screw Hex Hd. M16 x 2.0-35
5	821880	Tube Column	16	817777-3	Arm Table w/Scale
6	828927	Rack	17	817294-2	Clamp Column
7	821881-1	Support Column	18	817350	Gear Helical
8	828870	Tray, Back	19	817349	Worm Elevation
9	813164-6	Nut Hex M5	20	10251002	* Screw Pan Hd Cr M5 x 0.8-60
10	821754	* Screw Hex Hd. M10 x 1.5-40	21	828871	Tray, Front
11	828961	Base	22	828903	Table
			23	826438	Wrench Hex 24mm

* Standard hardware item - may be purchased locally.

Maintenance

Maintenance

WARNING: For your own safety, turn switch "OFF" and remove plug from power source outlet before maintaining or lubricating your drill press.

A coat of automotive type paste wax applied to the table and column will help to keep the surfaces clean.

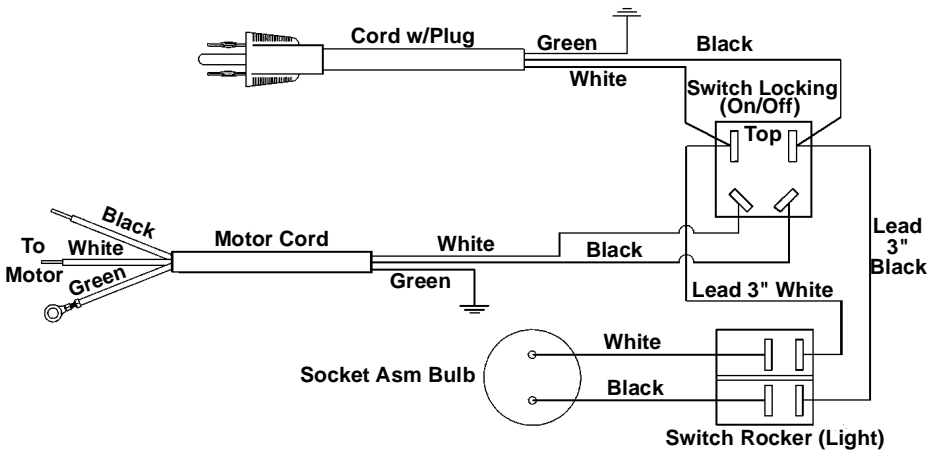
WARNING: To reduce the risk of shock or fire hazard, if the power cord is worn or cut, or damaged in any way, have it replaced immediately.

Lubrication

All of the ball bearings are packed with grease at the factory. They require no further lubrication.

Periodically lubricate the table elevation mechanism, the splines (grooves) in the spindle, and the rack (teeth of the quill). See "Getting to Know Your Drill Press".

Wiring Diagram



Troubleshooting

WARNING: For your own safety, turn switch "OFF" and always remove plug from power source outlet before troubleshooting.

Consult your Authorized Service Center if for any reason motor will not run.

Trouble	Probable Cause	Remedy
Noisy Operation	<ol style="list-style-type: none"> 1. Incorrect belt tension. 2. Dry spindle. 3. Loose spindle pulley 4. Loose motor pulley 	<ol style="list-style-type: none"> 1. Adjust tension. See "Installing and Tensioning Belt" section. 2. Lubricate spindle. See "Lubrication" section. 3. Checking tightness of retaining nut on pulley, and tighten if necessary. 4. Tighten set screws in pulleys.