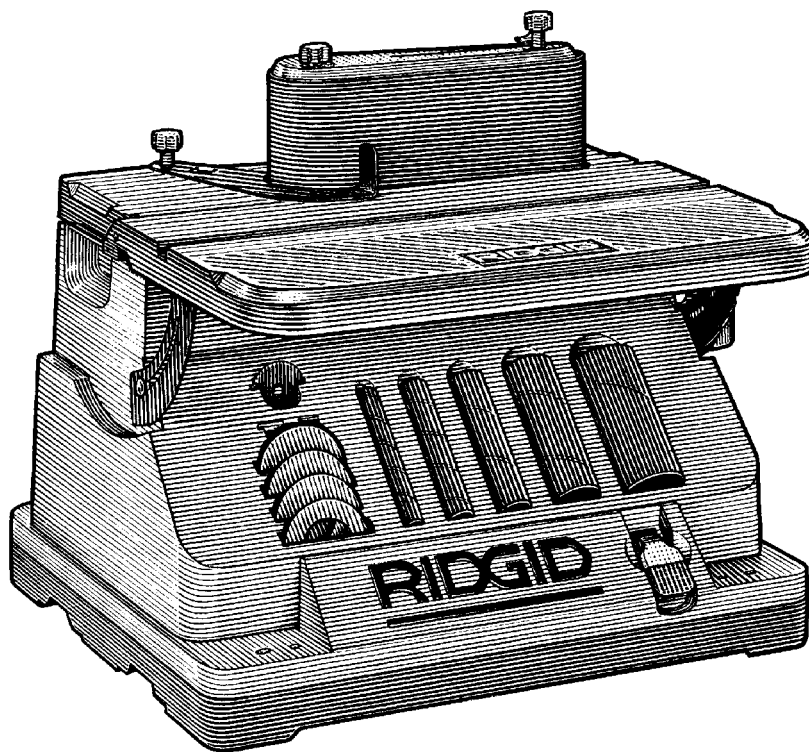


EB4424 OWNER'S MANUAL



OSCILLATING EDGE BELT/SPINDLE SANDER

- **Assembly**
- **Operation**
- **Repair Parts**

For Your Safety:

Read all instructions carefully

QUESTIONS OR COMMENTS?

CALL 1-800-4-RIDGID

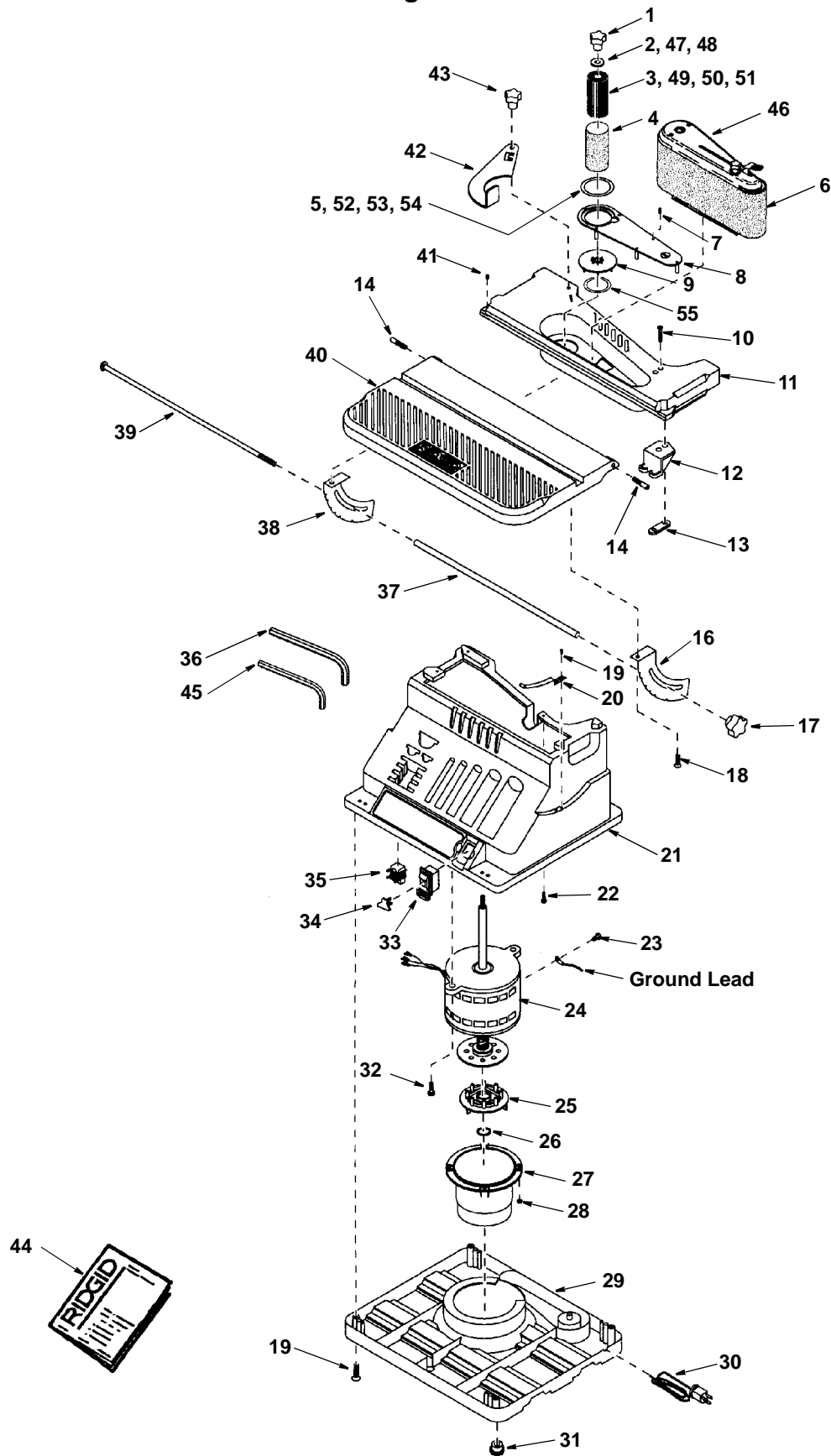
www.ridgidwoodworking.com

Repair Parts

Parts List For RIDGID Oscillating Edge Belt/Spindle Sander Model EB44240

RIDGID parts are available on-line at www.ridgidparts.com

Figure 1



Repair Parts

Parts List For RIDGID Oscillating Edge Belt/Spindle Sander Model EB44240

RIDGID parts are available on-line at www.ridgidparts.com

Figure 1

Always order by Part Number—Not by Key Number

Key No.	Part No.	Description	Key No.	Part No.	Description
1	826358	Knob Spindle	28	822356	Nut Hex Flange Lock 8-32
2	805553-2	Washer 21/64 x 5/8 x 1/32	29	826801	Enclosure
3	822304	Drum Sanding 3/4"	30	825854	Cord w/Plug
4	†	Drum Sandpaper	31	819012	Foot
5	825808	Plate Throat 2"	32	9416630	Screw Hex Hd Ty "T" 5/16-18 x 1
6	†	Belt Sanding 4" x 24"	33	826347	Switch Locking
7	810993-2	Screw Set Half Dog 10/32 x 1/2	34	AC1000	† Key Switch
8	825841	Adapter Throat Plate	35	817399-11	Relay
9	825544	Fan	36	37837	Wrench Hex "L" 5/32
10	805297-9	Screw Flat Hd 1/4-20 x 5/8	37	825549	Spacer Table Lock
11	825523	Table Rear	38	825537-1	Bracket Table Lock Left
12	825548	Plate Wear	39	825543	Bolt Table Lock
13	825844	Nut Special Twin 1/4-20	40	825524	Table Front
14	825842	Screw Shoulder 1/4-20	41	803309-2	Screw Soc Set Lock 10-32 x 3/8
15			42	825525	Plate Stop
16	825537	Bracket Table Lock	43	825539-1	Knob 1/4-20
17	825852	Knob 1/4-20 x 3/4	44	SP6001	Owners Manual
18	159572-138	Screw Wash/Hd Ty "T" 10-32 x 3/8	45	37836	Wrench Hex "L" 3/32
19	808380-7	Screw Pan Hd 10-14 x 1/2	46	—	Belt Sanding Assembly (See Fig. 2)
20	825840	Spring Detent	47	60358	* Washer 5/8 x 1-3/4 x 1/8
21	826803	Base	48	805553-24	Washer 21/64 x 7/8 x 3/64
22	159572-186	Screw Hex Hd Ty "T" 1/4-20 x 1	49	822304-1	Drum Sanding 1"
23	824604	Screw Hex Wash/Hd Ty "T" 8-32 x 3/8	50	822304-2	Drum Sanding 1-1/2"
24	826783	• Motor Asm	51	822304-3	Drum Sanding 2"
25	826469	Follower Cam	52	825808-1	Plate Throat 1-1/2"
26	805641-1	Ring Retaining 5133-31	53	825808-2	Plate Throat 1"
27	826470	Housing	54	825808-3	Plate Throat 1/2"
			55	805642	Ring, Retaining 5160-50

* Standard Hardware Item - May be purchased locally

† These parts are available where you purchased your sander.

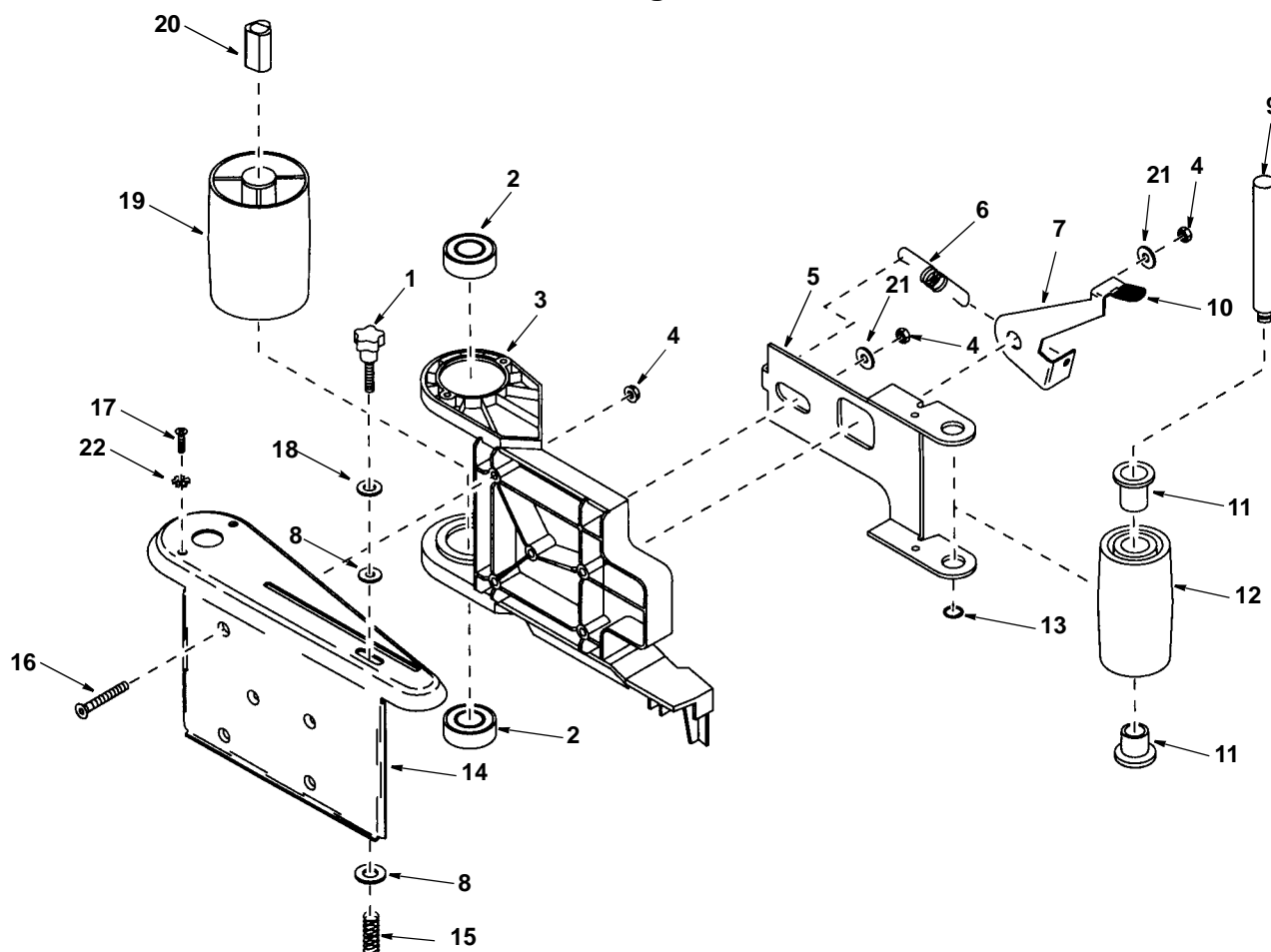
- Any attempt to repair this motor may create a hazard unless repair is done by a qualified service technician. Repair service is available at your nearest Authorized Service Center.

Parts List For RIDGID Oscillating Edge Belt/ Spindle Sander

Model EB44240

RIDGID parts are available on-line at www.ridgidparts.com

Figure 2



Always order by Part Number—Not by Key Number

Key No.	Part No.	Description
1	825539	Knob 10-32 x 1-1/4
2	825541	Bearing Ball
3	825526	Bed
4	37482	Nut Lock
5	825528	Guide
6	825531	Spring Extension
7	825529	Lever
8	805549-5	* Washer 13/64 x 1/2 x 3/64
9	825532	Shaft Idle
10	826163-2	Cap Grip
11	825838	Bushing

Key No.	Part No.	Description
12	825542	Drum Idle
13	805642	Ring Retaining 5160-50
14	826802	Platen
15	30521	Spring Swivel
16	821166-1	Screw Flat Hd Hex 10/32 x 1-1/2
17	808380-5	Screw Pan hd #8 x 3/4
18	820175	Washer Rubber
19	825547	Drum Drive
20	509547	Coupling
21	9416712	* Washer 3/16 x 5/8 x 1/16
22	114603	* Lockwasher Ext. #10

* Standard Hardware Item - May be purchased locally

Maintenance

WARNING: For your own safety, turn switch “OFF” and remove plug from power source outlet before adjusting or maintaining your sander.

WARNING: To reduce the risk of electrocution or fire, any repairs to electrical systems should be done only by qualified service technicians. Unit must be reassembled exactly to factory specifications.

If power cord is worn or cut, or damaged in anyway, have it replaced immediately.

Frequently blow out or vacuum out any dust that may accumulate inside the motor.

Lubrication

All bearings in tool are self-lubricating. They require no further lubrication.

RIDGID Recommends the Following Accessories

WARNING: Use only accessories recommended for this sander. Using other accessories may be dangerous.

Do not use any accessory unless you have received and read complete instructions for its use.

Item	SKU No.
Miter Gauge	AC1021
Switch Key	AC1000

Wiring Diagram

