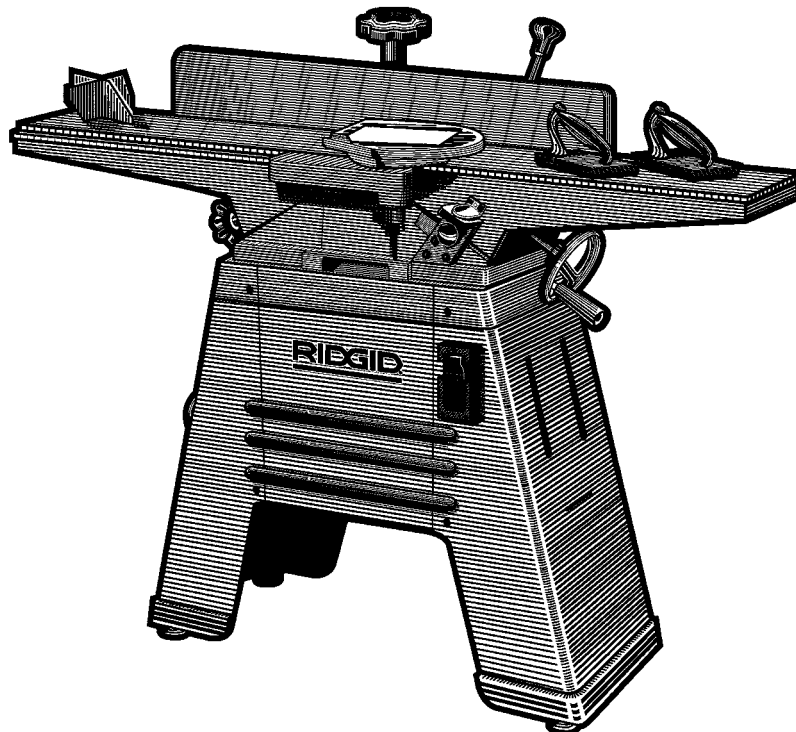


# JP0610 OWNER'S MANUAL



## 6-1/8" JOINTER/PLANER

**For Your Safety:**  
**Read all instructions carefully**  
**Save this manual for future reference**

Part No. SP6351

### Call Us 1<sup>st</sup>

For any questions about:

- Operation
- Warranty (See back cover)
- Technical Assistance
- Repair Parts

at: **1-800-4 RIDGID**

M-F 7:30 a.m. – 5:30 p.m.

Sat. 8 a.m. – 3 p.m. (CST),

*Please have your Model Number and  
Serial Number on hand when calling.*

Or online at:

[www.ridgidwoodworking.com](http://www.ridgidwoodworking.com)

[www.ridgidparts.com](http://www.ridgidparts.com)  
(parts only)

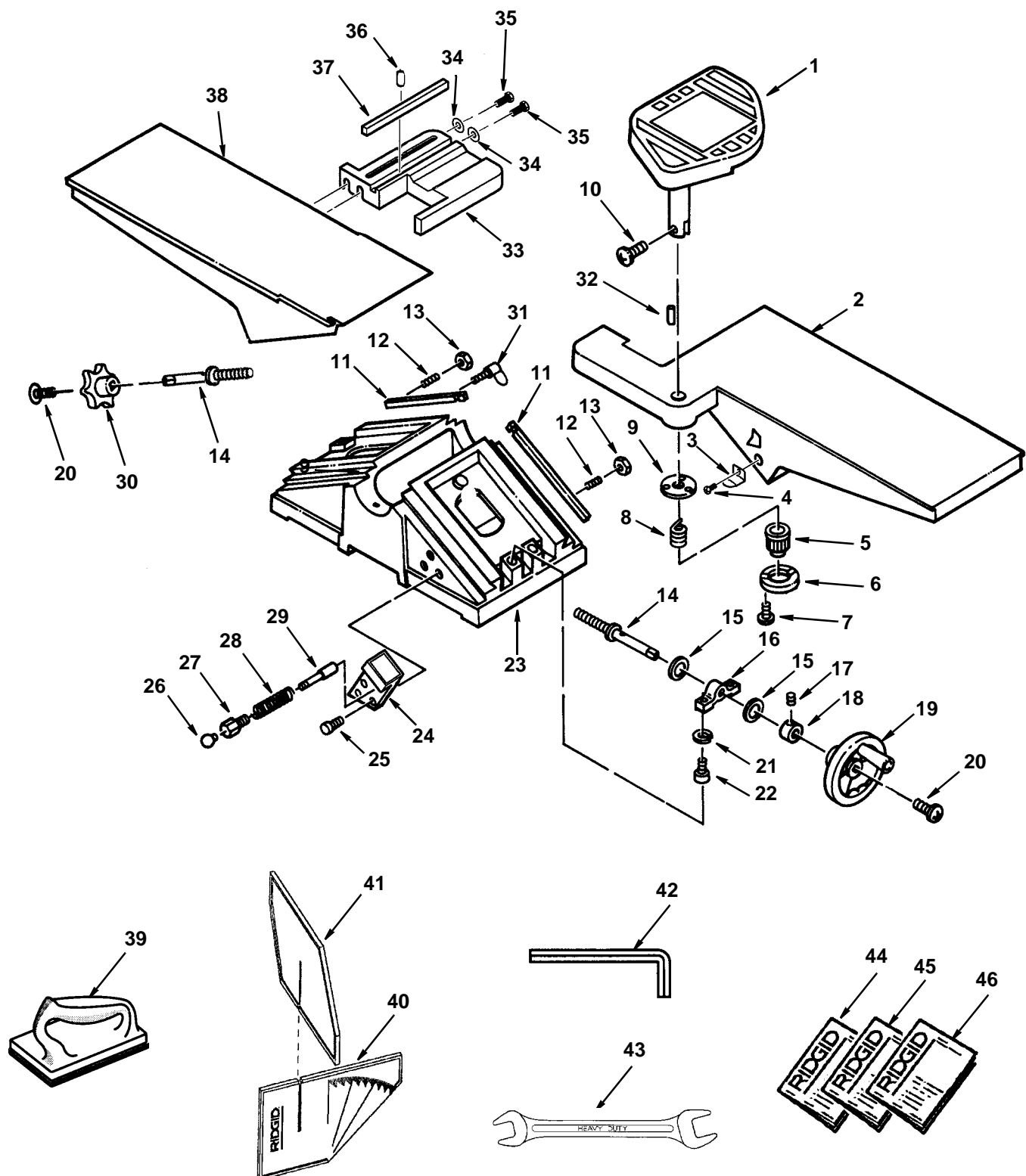
Printed in Taiwan

## Parts List for RIDGID 6-1/8" Jointer/Planer

Model No. JP06100

RIDGID parts are available on-line at [www.ridgidparts.com](http://www.ridgidparts.com)

Figure 1



## Parts List for RIDGID 6-1/8" Jointer/Planer

Model No. JP06100

RIDGID parts are available on-line at [www.ridgidparts.com](http://www.ridgidparts.com)

### Figure 1

Always order by Part Number - Not by Key Number

Key No.	Part No.	Description	Key No.	Part No.	Description
1	826655	Guard Cutter	24	828649	Block Asm Depth
2	824854-1	Table Infeed	25	9421622	Screw Cap 5/16-18 x 3/4
3	828397	Pointer Indicator	26	826529	Knob Plunger
4	822495	* Screw Pan Hd. 8-32 x 1/4	27	824873	Housing Plunger
5	824867	Knob	28	824872	Spring
6	824866	Retainer Knob	29	824874	Plunger
7	822495-1	* Screw Pan Hd 8/32 x 5/8	30	826523	Knob Outfeed
8	824868	Spring	31	824857	Screw Wing 1/4-20 x 1
9	824865	Retainer	32	813249-132	Pin Spring 5 x 30
10	816755-1	* Screw Pan Hd M5 x 0.8-10	33	828531	Slide Fence
11	824856	Gib	34	824863	Washer 3/8 x 20mm x 3mm
12	160033-4	* Screw Set 1/4-20 x 1	35	141594-44	* Screw Cap 3/8-16 x 1/2
13	805478	* Nut Hex 1/4-20	36	813249-106	Pin Roll 4mm x 20mm
14	824859	Screw Elevation	37	828523	Key
15	824860	Washer Brass	38	824855-1	Table Outfeed
16	824858	Clamp	39	AC8601	† Push Block
17	160033-1	* Screw Set 1/4-20 x 3/8	40	828402	Angle Gauge - Part A
18	824861	Collar	41	828403	Angle Gauge - Part B
19	826524	Handwheel	42	813317-6	* Wrench Hex "L" M3
20	828711	Screw Pan Hd 1/4-20 x 5/8	43	821202	* Wrench Box M8/M10
21	818826-7	* Lockwasher 8mm	44	SP6351	Owners Manual - English
22	141594-13	* Screw Cap 5/16-18 x 1-1/4	45	SP6351S	Owners Manual - Spanish
23	824853-1	Base	46	SP6351F	Owners Manual - French

\* Standard hardware item, may be purchased locally

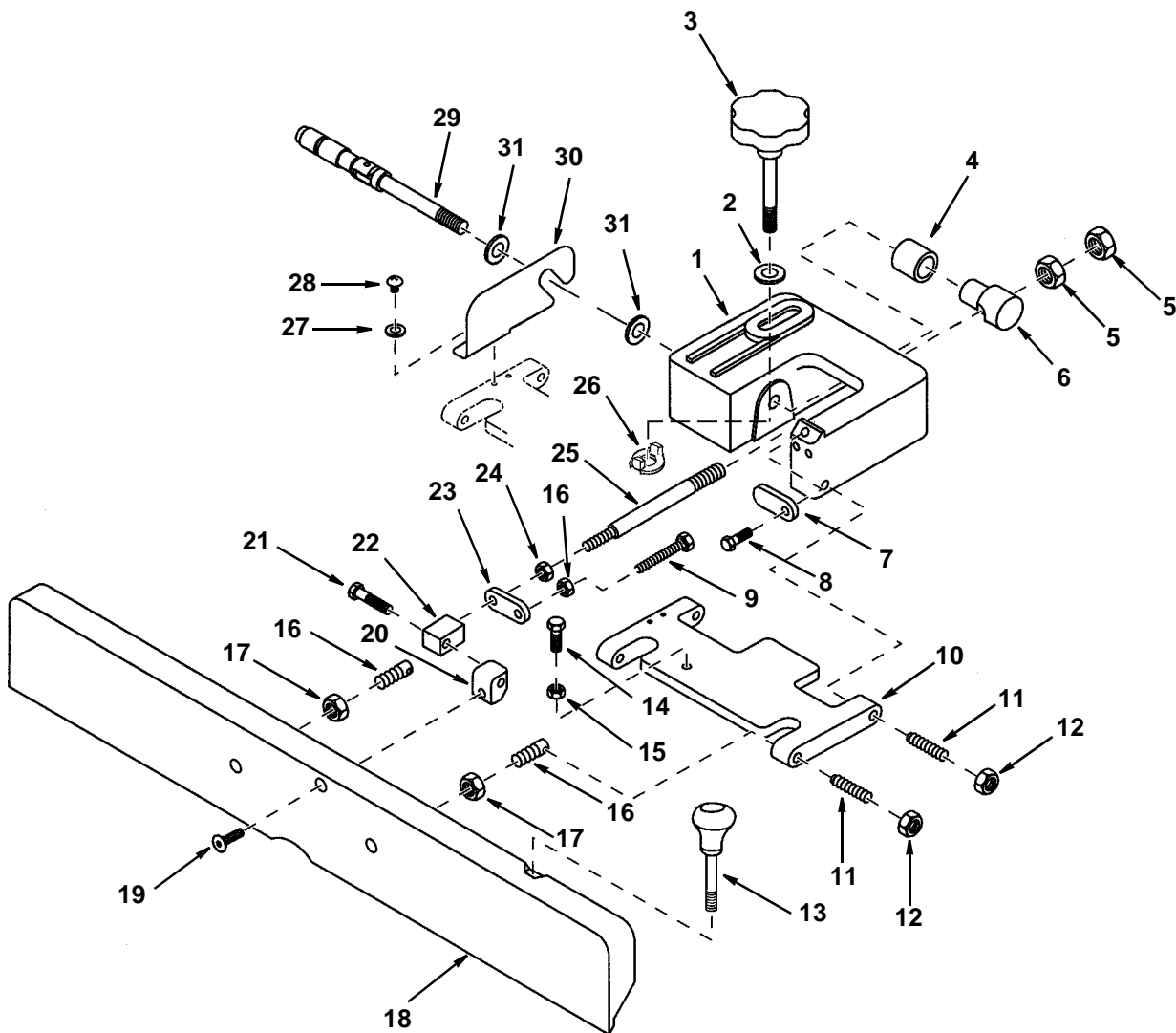
† These replacement parts are available where you purchased your jointer.

## Parts List for RIDGID 6-1/8" Jointer/Planer

Model No. JP06100

RIDGID parts are available on-line at [www.ridgidparts.com](http://www.ridgidparts.com)

Figure 2



## Parts List for RIDGID 6-1/8" Jointer/Planer

Model No. JP06100

RIDGID parts are available on-line at [www.ridgidparts.com](http://www.ridgidparts.com)

### Figure 2

Always order by Part Number - Not by Key Number

Key No.	Part No.	Description
1	828689	Holder Fence
2	805563-6	* Washer .515 x 1-1/8 x 3/32
3	828400	Knob Fence
4	828517	Sleeve Fence
5	805488	* Nut Hex Jam 5/8-16
6	828518	Nut Tee Fence
7	828524	Plate Stop
8	828522	Bolt Shoulder 9mm x 19mm
9	805467-11	* Screw Hex hd 5/16-18 x 1-3/4
10	828528	Plate Fence Pivot
11	828516	Screw Pivot
12	118645	Nut Hex Jam 3/8-16
13	828712	Knob Fence Tilt
14	805467-6	* Screw Hex Hd 5/16-18 x 1
15	805482	* Nut Hex Jam 5/16-18
16	828447	Stud Pivot

Key No.	Part No.	Description
17	813640	* Nut Hex Jam 1/2-20
18	828404	Fence
19	805297-8	* Screw Flat Hd Soc 5/16-18 x 1-1/2
20	828520	Nut Handle
21	828525	Bolt Shoulder 10 x 6
22	828521	Nut Pivot
23	828519	Stop Fence
24	805485	* Nut Hex Jam 7/15-14
25	828446	Shaft Lock
26	828526	Collar Lock
27	805551-2	* Washer Flat 1/4 x 1/2 x 1/16
28	809491-5	* Screw Pan Cr 1/4-20 x 1/2
29	828401	Handle Asm
30	828529	Bracket Fence
31	805567-6	Washer .63 I.D. x 1-3/4 x 5/32

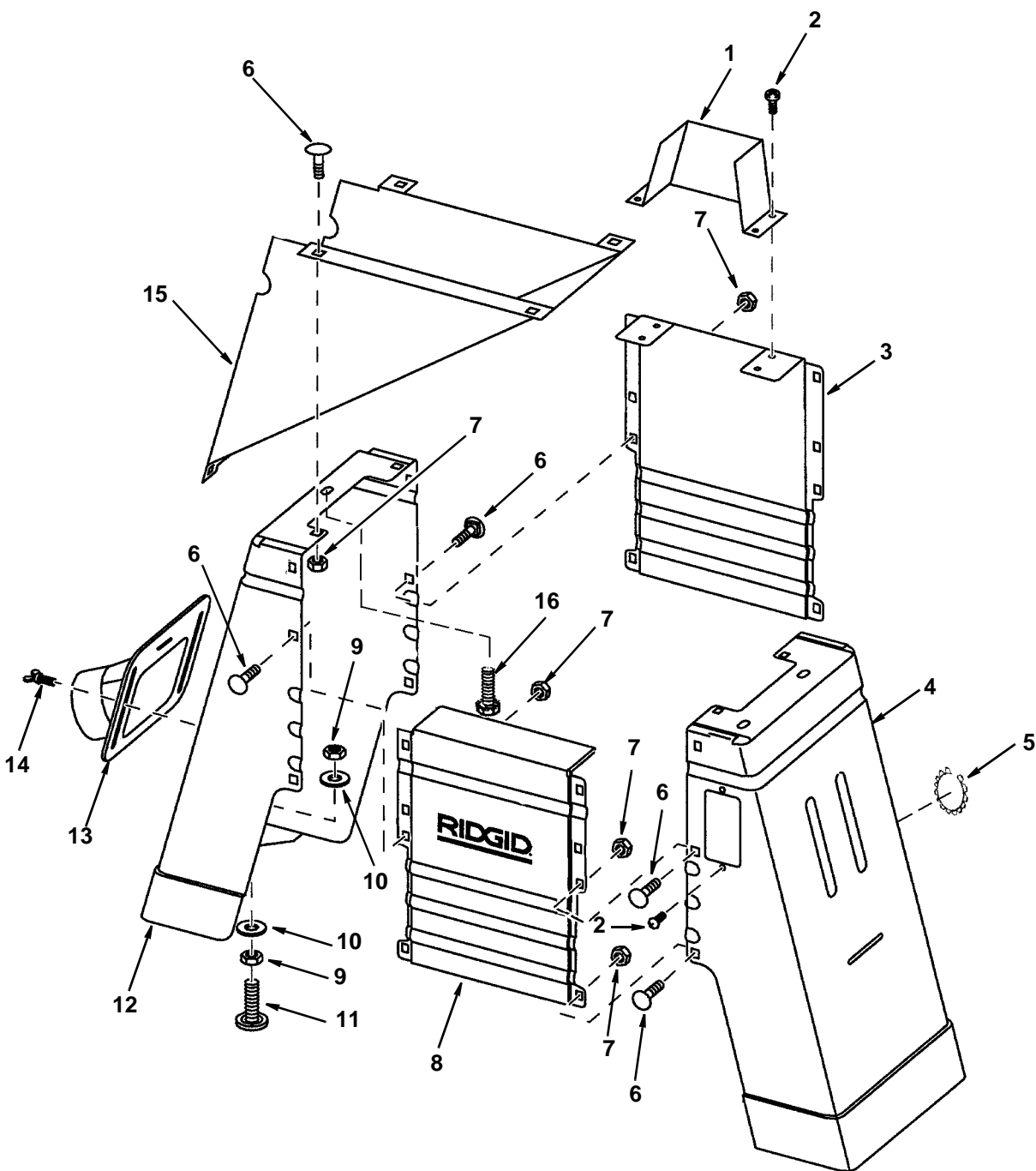
\* Standard hardware item, may be purchased locally

## Parts List for RIDGID 6-1/8" Jointer/Planer

Model No. JP06100

RIDGID parts are available on-line at [www.ridgidparts.com](http://www.ridgidparts.com)

Figure 3



# Repair Parts

---

## Parts List for RIDGID 6-1/8" Jointer/Planer

Model No. JP06100

RIDGID parts are available on-line at [www.ridgidparts.com](http://www.ridgidparts.com)

### Figure 3

Always order by Part Number - Not by Key Number

Key No.	Part No.	Description
1	828577	Guard Pulley
2	826658	Screw Pan Cr Serr 3/16-24 x 3/8
3	828563	Panel Rear
4	828565	Panel Asm Right (Includes Key 5)
5	824909	Grommet
6	827642-1	Bolt Rd Hd Sh Neck 5/16-18 x 1/2
7	826817-1	Nut Hex Flange 5/16-18
8	828562	Panel Asm Front

Key No.	Part No.	Description
9	118615	* Nut Hex 3/8-16
10	820296-3	Washer 10mm I.D.
11	803835-3	Foot Leveling 3/8
12	828561	Panel Asm Left
13	828411	Chute Dust
14	826525	Screw Wing
15	828566	Bracket Motor
16	828412	Screw Hex Ser Fl 3/8-16 x 3/4

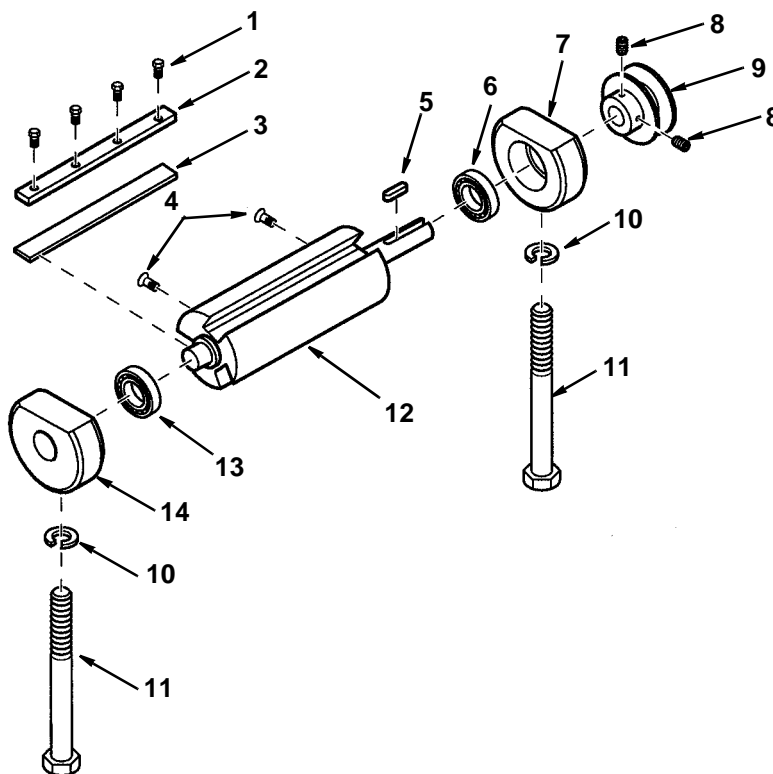
\* Standard hardware item, may be purchased locally

## Parts List for RIDGID 6-1/8" Jointer/Planer

Model No. JP06100

RIDGID parts are available on-line at [www.ridgidparts.com](http://www.ridgidparts.com)

Figure 4



Always order by Part Number - Not by Key Number

Key No.	Part No.	Description
1	824886	Screw 1/4-28 x 7mm
2	824885	Wedge
3	AC8600	† Blade
4	821030	Screw Flat Hd Hex Soc M5 x 0.8-12
5	818654-7	Key
6	820722-5	Bearing
7	824881-1	Support Bearing

Key No.	Part No.	Description
8	160033-1	* Soc Set Screw 1/4-20 x 3/8
9	824888	Pulley
10	818826-8	* Lockwasher M10
11	824890	Screw Hex 3/8-24 x 3-1/2
12	828399	Cutter head
13	820722-6	Bearing
14	824879-1	Support Bearing

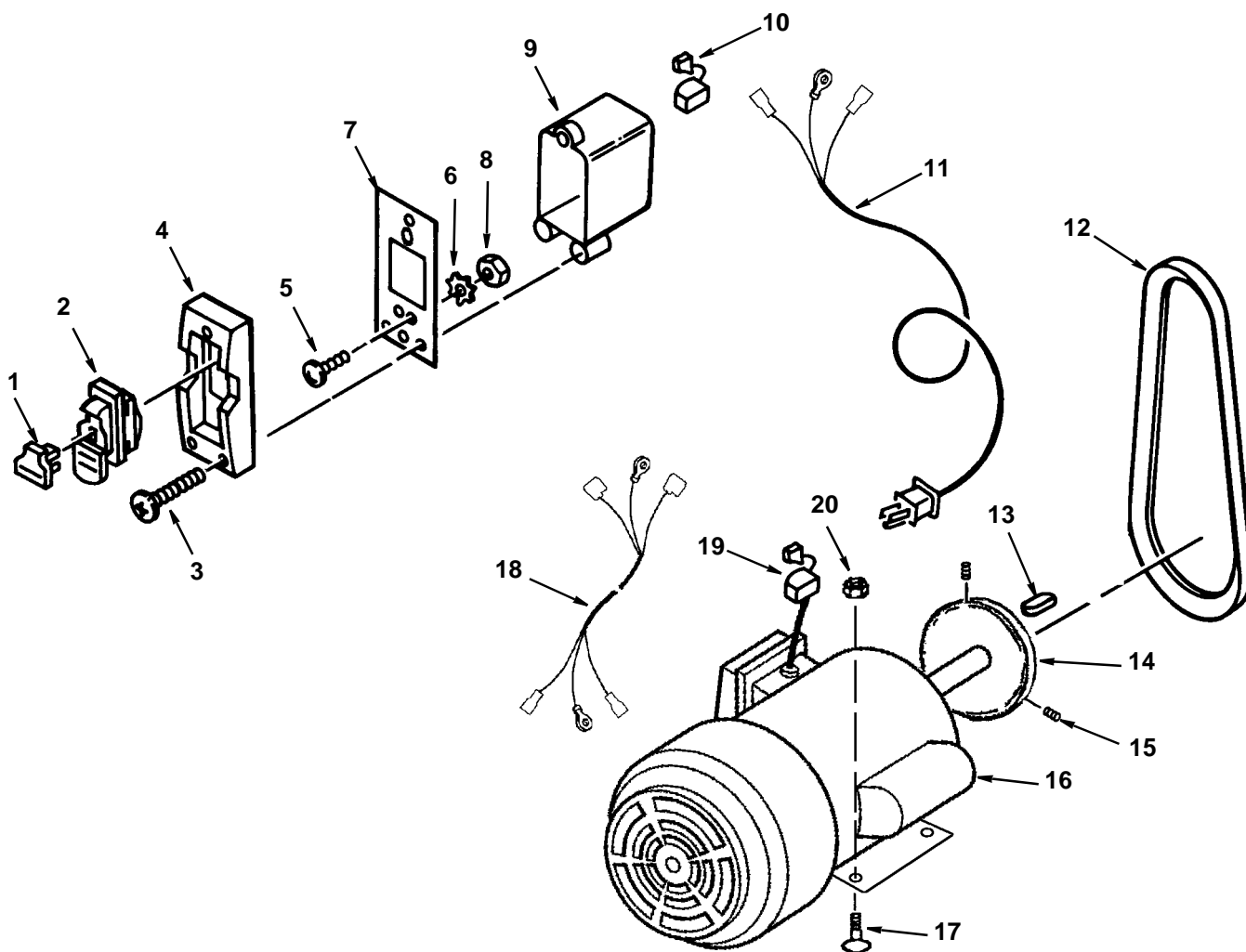
† These parts are available where you purchased your jointer.



## Parts List for RIDGID 6-1/8" Jointer/Planer Model No. JP06100

RIDGID parts are available on-line at [www.ridgidparts.com](http://www.ridgidparts.com)

Figure 5



Always order by Part Number - Not by Key Number

Key No.	Part No.	Description
1	826122	Key Switch
2	826123	Switch Locking
3	817357-5	* Screw Ty AB M4 x 1.6-18
4	826395	Bezel Switch
5	808275-4	* Screw Pan Hd #8-32 x 3/8
6	138164	* Lockwasher #8
7	826653	Plate Switch Bezel
8	805475	* Nut #8-32
9	824914	Box Switch
10	169123-15	Strain Relief 6P3-4

Key No.	Part No.	Description
11	824911-1	Cord w/Plug
12	817393-7	V-Belt A-36
13	818654-8	Key
14	824931	Pulley
15	160033-1	Screw Set 1/4-20 x 3/8
16	828530	Motor
17	827642-1	* Bolt Rd Hd Sh 5/16-18 x 1/2
18	824915-1	Cord Motor
19	69164	Strain Relief 6N3-4
20	826817-1	Nut

\* Standard hardware item, may be purchased locally

# Maintenance and Lubrication

## Maintenance

Do not allow pitch to accumulate on the tables, the fence, the cutter guard, the cutterhead or the knives. Clean them with an appropriate solvent.

Apply a thin coat of paste type wax to the tables and the fence so that the wood slides easily while feeding. This also deters rusting.

Do not allow chips to accumulate on the underside of the jointer/planer.

If power cord is worn, cut, or damaged in any way, have it replaced immediately.

Disassembly of the motor should only be done by an Authorized Service Center. Disregarding this may void your tools warranty.

**NOTE:** The speed of this motor cannot be regulated or changed.

Motors used on woodworking tools are particularly susceptible to the accumulation of sawdust and wood chips and should be blown out or "vacuumed" frequently to prevent interference with normal motor ventilation.

## Lubrication

**WARNING: Unplug the jointer/planer. Unit could start suddenly. You could be badly hurt.**

The ball bearings in this machine are packed with grease at the factory. They required no further lubrication.

The following parts should be oiled occasionally with SAE No. 20 or No. 30 engine oil.

1. Dovetail spacer and dovetail slide.
2. Elevation screw (first clean if necessary).

## Wiring Diagram

