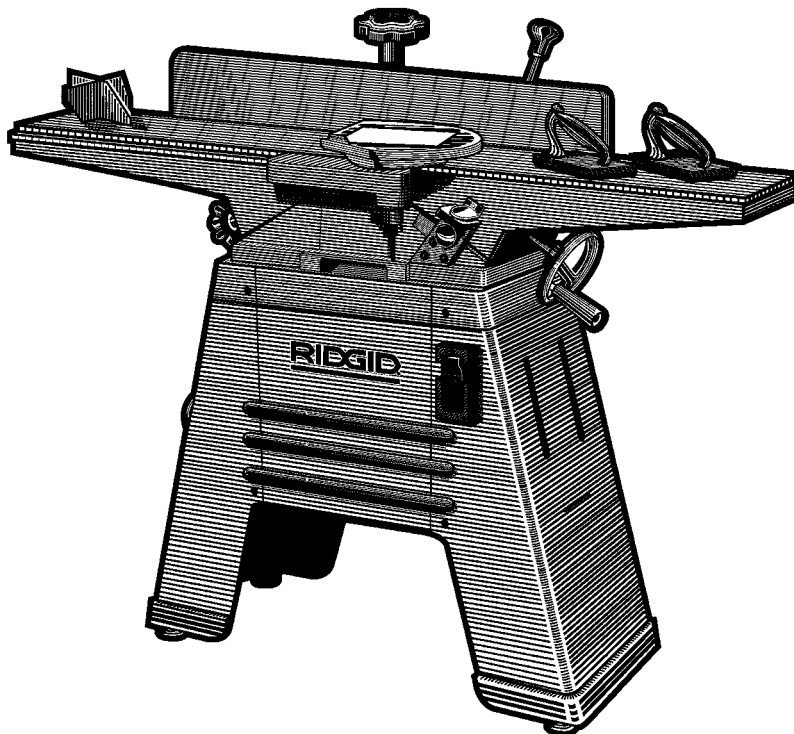


# JP0610 OPERATOR'S MANUAL



## 6-1/8" (156mm) JOINTER/ PLANER

**⚠ WARNING:** To reduce the risk of injury, the user must read and understand the operator's manual before using this product.

Part No. SP6442

**SAVE THIS MANUAL FOR  
FUTURE REFERENCE**

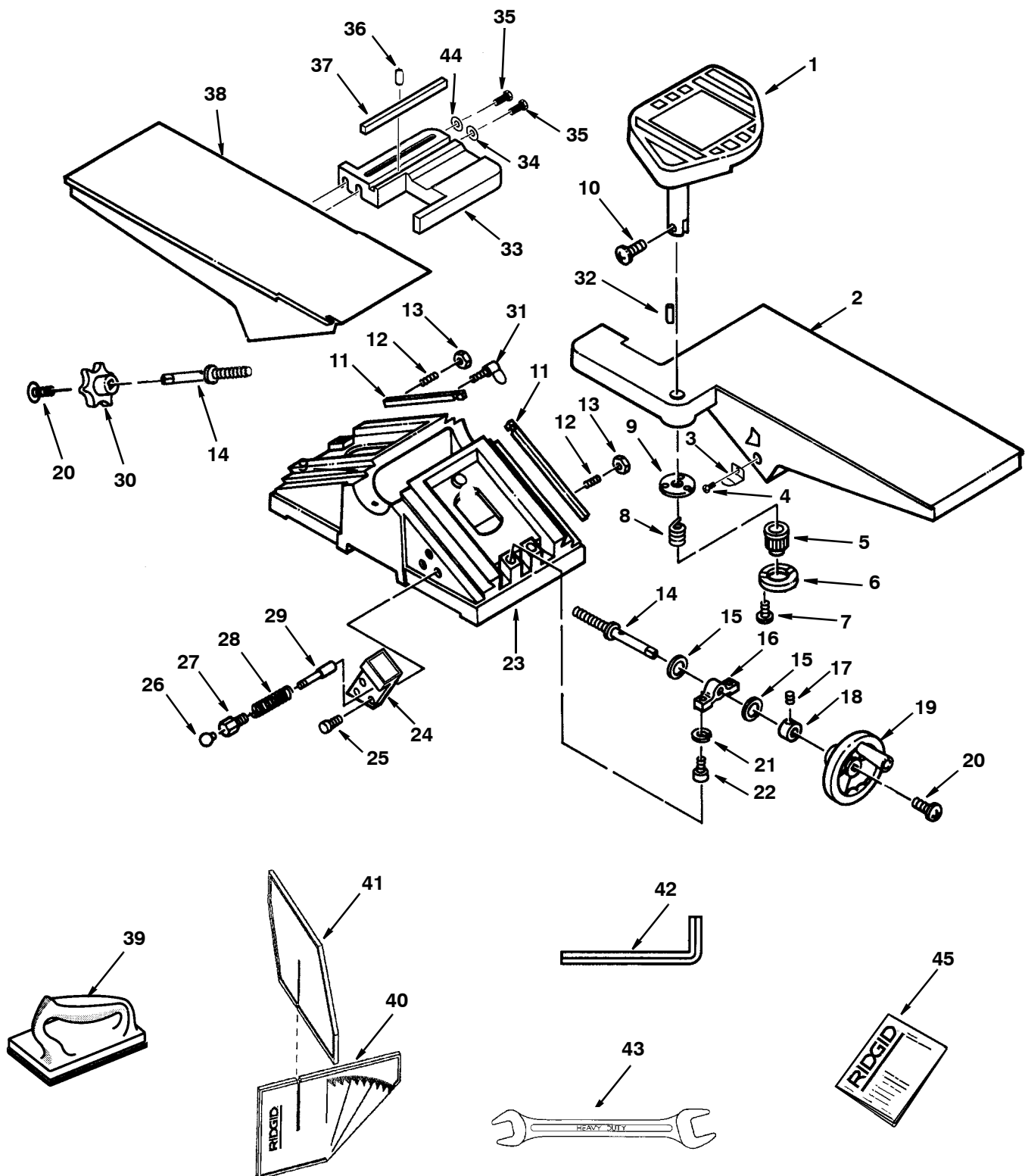
Printed in Taiwan

## Parts List for RIDGID 6-1/8" Jointer/Planer

Model No. JP06101

RIDGID parts are available on-line at [www.ridgidparts.com](http://www.ridgidparts.com)

Figure 1



## Parts List for RIDGID 6-1/8" Jointer/Planer

Model No. JP06101

RIDGID parts are available on-line at [www.ridgidparts.com](http://www.ridgidparts.com)

**Figure 1**

**Always order by Part Number - Not by Key Number**

Key No.	Part No.	Description	Key No.	Part No.	Description
1	826655	Guard Cutter	25	9421622	Screw Cap 5/16-18 x 3/4
2	824854-1	Table Infeed	26	826529	Knob Plunger
3	828397	Pointer Indicator	27	824873	Housing Plunger
4	822495	* Screw Pan Hd. 8-32 x 1/4	28	824872	Spring
5	824867	Knob	29	824874	Plunger
6	824866	Retainer Knob	30	826523	Knob Outfeed
7	822495-1	* Screw Pan Hd 8/32 x 5/8	31	824857	Screw Wing 1/4-20 x 1
8	824868	Spring	32	813249-132	Pin Spring 5 x 30
9	824865	Retainer	33	828531	Slide Fence
10	816755-1	* Screw Pan Hd M5 x 0.8-10	34	824863	Washer 3/8 x 20mm x 3mm
11	824856	Gib	35	141594-44	* Screw Cap 3/8-16 x 1/2
12	160033-4	* Screw Set 1/4-20 x 1	36	813249-106	Pin Roll 4mm x 20mm
13	805478	* Nut Hex 1/4-20	37	828523	Key
14	824859	Screw Elevation	38	824855-1	Table Outfeed
15	824860	Washer Brass	39	AC8601	† Push Block
16	824858	Clamp	40	828402	Angle Gauge - Part A
17	160033-1	* Screw Set 1/4-20 x 3/8	41	828403	Angle Gauge - Part B
18	824861	Collar	42	813317-6	* Wrench Hex "L" M3
19	826524	Handwheel	43	821202	* Wrench Box M8/M10
20	828711	Screw Pan Hd 1/4-20 x 5/8	44	820296-5	Washer Flat 10mm
21	818826-7	* Lockwasher 8mm	45	SP6442	Operator's Manual
22	141594-13	* Screw Cap 5/16-18 x 1-1/4			
23	824853-1	Base			
24	828649	Block Asm Depth			

\* Standard hardware item, may be purchased locally

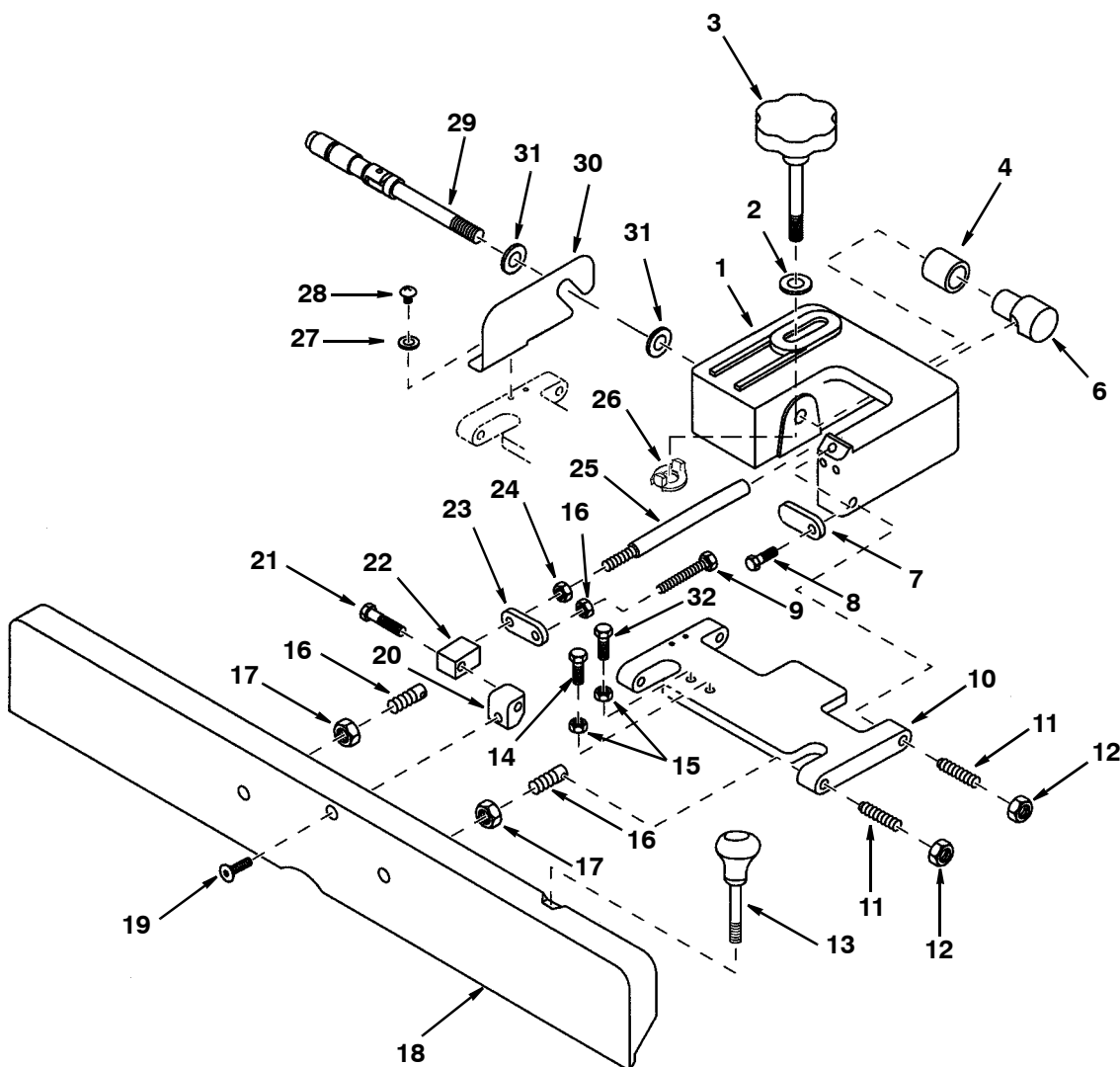
† These replacement parts are available where you purchased your jointer.

## Parts List for RIDGID 6-1/8" Jointer/Planer

**Model No. JP06101**

**RIDGID parts are available on-line at [www.ridgidparts.com](http://www.ridgidparts.com)**

## Figure 2



# Repair Parts

## Parts List for RIDGID 6-1/8" Jointer/Planer

Model No. JP06101

RIDGID parts are available on-line at [www.ridgidparts.com](http://www.ridgidparts.com)

### Figure 2

Always order by Part Number - Not by Key Number

Key No.	Part No.	Description
1	828689	Holder Fence
2	805563-6	* Washer .515 x 1-1/8 x 3/32
3	828400	Knob Fence
4	828517	Sleeve Fence
5		
6	828518	Nut Tee Fence
7	828524	Plate Stop
8	828522	Bolt Shoulder 9mm x 19mm
9	805467-11	* Screw Hex Hd 5/16-18 x 1-3/4
10	829507	Plate Fence Pivot
11	828516	Screw Pivot
12	118645	Nut Hex Jam 3/8-16
13	828712	Knob Fence Tilt
14	805467-6	* Screw Hex Hd 5/16-18 x 1
15	805482	* Nut Hex Jam 5/16-18
16	828447	Stud Pivot

Key No.	Part No.	Description
17	813640	* Nut Hex Jam 1/2-20
18	829506	Fence
19	805297-8	* Screw Flat Hd Soc 5/16-18 x 1-1/2
20	828520	Nut Handle
21	828525	Bolt Shoulder 10 x 6
22	828521	Nut Pivot
23	828519	Stop Fence
24	805485	* Nut Hex Jam 7/16-14
25	829508	Shaft Lock
26	828526	Collar Lock
27	805551-2	* Washer Flat 1/4 x 1/2 x 1/16
28	809491-5	* Screw Pan Cr 1/4-20 x 1/2
29	828401	Handle Asm
30	828529	Bracket Fence
31	805567-6	Washer .63 I.D. x 1-3/4 x 5/32
32	805467	* Screw Hex Hd 5/16-18 x 1-1/4

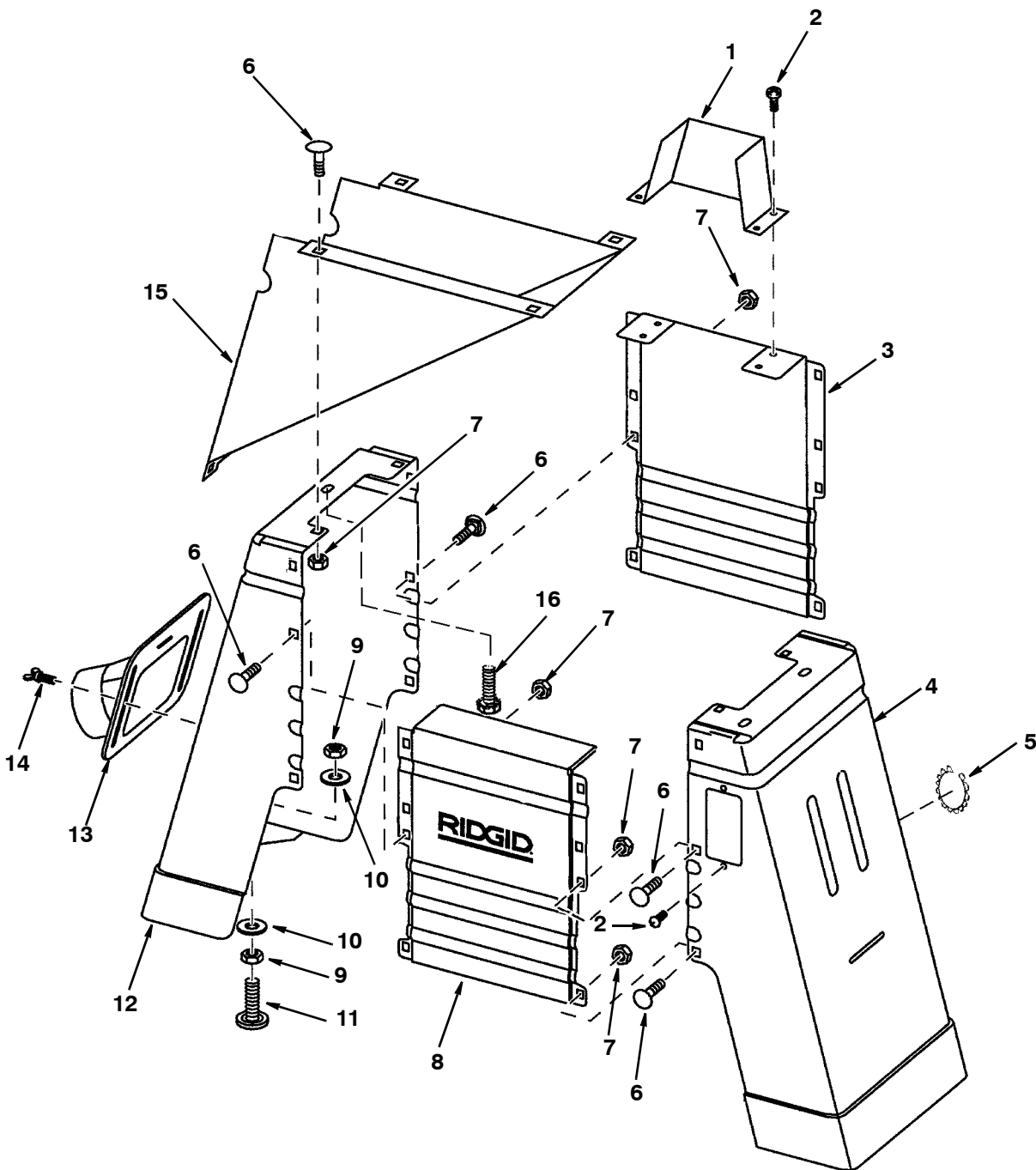
\* Standard hardware item, may be purchased locally

## Parts List for RIDGID 6-1/8" Jointer/Planer

Model No. JP06101

RIDGID parts are available on-line at [www.ridgidparts.com](http://www.ridgidparts.com)

Figure 3



## Repair Parts

---

### Parts List for RIDGID 6-1/8" Jointer/Planer

Model No. JP06101

RIDGID parts are available on-line at [www.ridgidparts.com](http://www.ridgidparts.com)

#### Figure 3

Always order by Part Number - Not by Key Number

Key No.	Part No.	Description
1	828577	Guard Pulley
2	826658	Screw Pan Cr Serr 3/16-24 x 3/8
3	828563	Panel Rear
4	828565	Panel Asm Right (Includes Key 5)
5	824909	Grommet
6	827642-1	Bolt Rd Hd Sh Neck 5/16-18 x 1/2
7	826817-1	Nut Hex Flange 5/16-18
8	828562	Panel Asm Front

Key No.	Part No.	Description
9	118615	* Nut Hex 3/8-16
10	820296-3	Washer 10mm I.D.
11	803835-3	Foot Leveling 3/8
12	828561	Panel Asm Left
13	828411	Chute Dust
14	826525	Screw Wing
15	828566	Bracket Motor
16	828412	Screw Hex Ser Fl 3/8-16 x 3/4

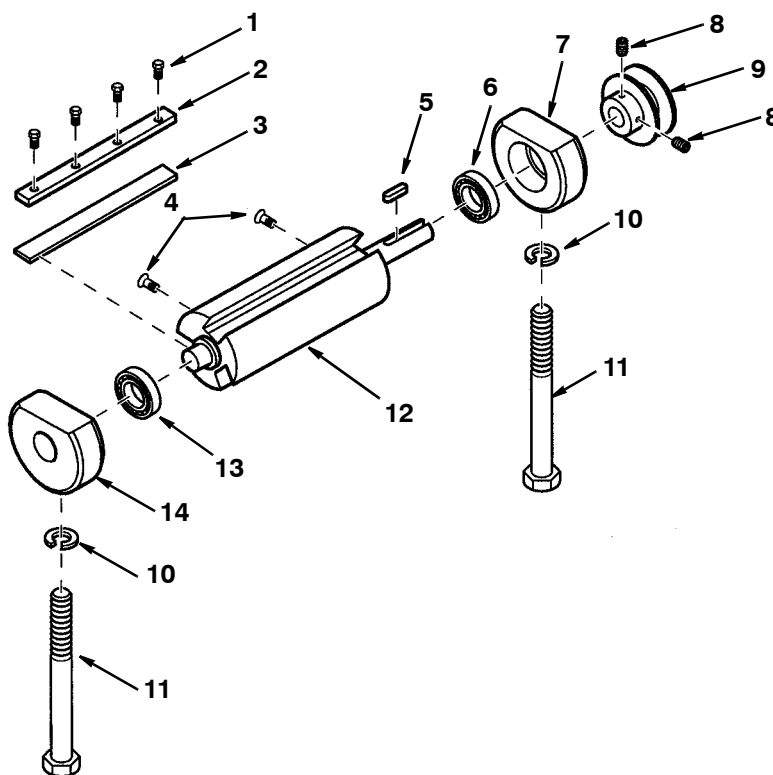
\* Standard hardware item, may be purchased locally

## Parts List for RIDGID 6-1/8" Jointer/Planer

Model No. JP06101

RIDGID parts are available on-line at [www.ridgidparts.com](http://www.ridgidparts.com)

Figure 4



Always order by Part Number - Not by Key Number

Key No.	Part No.	Description
1	824886	Screw 1/4-28 x 7mm
2	824885	Wedge
3	AC8600	† Blade
4	821030	Screw Flat Hd Hex Soc M5 x 0.8-12
5	818654-7	Key
6	820722-5	Bearing
7	824881-1	Support Bearing

Key No.	Part No.	Description
8	160033-1	* Soc Set Screw 1/4-20 x 3/8
9	824888	Pulley
10	818826-8	* Lockwasher M10
11	824890	Screw Hex 3/8-24 x 3-1/2
12	828399	Cutter head
13	820722-6	Bearing
14	824879-1	Support Bearing

† These parts are available where you purchased your jointer.

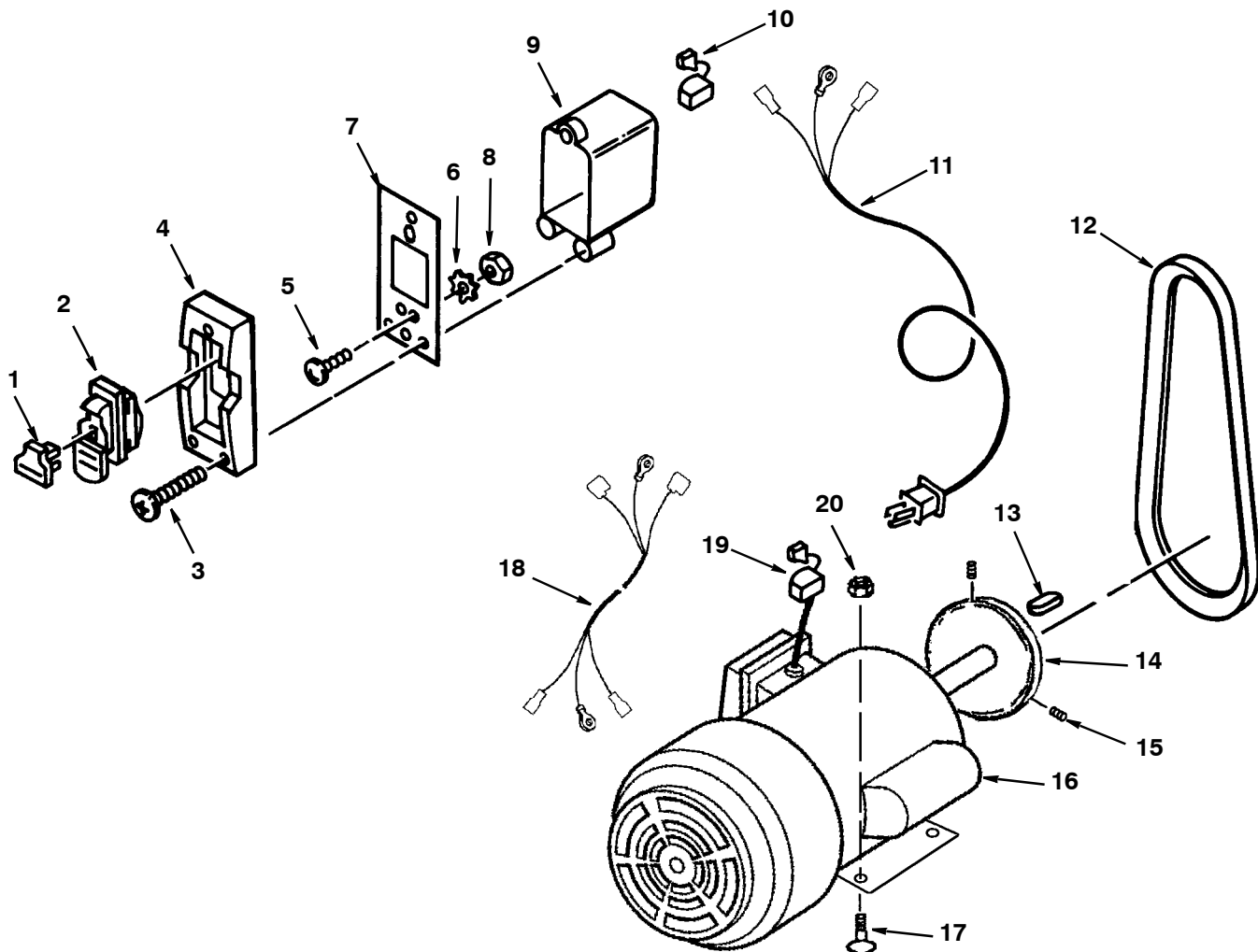


## Parts List for RIDGID 6-1/8" Jointer/Planer

Model No. JP06101

RIDGID parts are available on-line at [www.ridgidparts.com](http://www.ridgidparts.com)

Figure 5



Always order by Part Number - Not by Key Number

Key No.	Part No.	Description
1	826122	Key Switch
2	826123	Switch Locking
3	817357-5	* Screw Ty AB M4 x 1.6-18
4	826395	Bezel Switch
5	808275-4	* Screw Pan Hd #8-32 x 3/8
6	138164	* Lockwasher #8
7	826653	Plate Switch Bezel
8	805475	* Nut #8-32
9	824914	Box Switch
10	169123-15	Strain Relief 6P3-4

Key No.	Part No.	Description
11	824911-1	Cord w/Plug
12	817393-7	V-Belt A-36
13	818654-8	Key
14	824931	Pulley
15	160033-1	Screw Set 1/4-20 x 3/8
16	828530	Motor
17	827642-1	* Bolt Rd Hd Sh 5/16-18 x 1/2
18	824915-1	Cord Motor
19	69164	Strain Relief 6N3-4
20	826817-1	Nut

\* Standard hardware item, may be purchased locally

# Maintenance and Lubrication

## Maintenance

Do not allow pitch to accumulate on the tables, the fence, the cutter guard, the cutterhead or the knives. Clean them with an appropriate solvent.

Apply a thin coat of paste type wax to the tables and the fence so that the wood slides easily while feeding. This also deters rusting.

Do not allow chips to accumulate on the underside of the jointer/planer.

If power cord is worn, cut, or damaged in any way, have it replaced immediately.

Disassembly of the motor should only be done by an Authorized Service Center. Disregarding this may void your tools warranty.

**NOTE:** The speed of this motor cannot be regulated or changed.

Motors used on woodworking tools are particularly susceptible to the accumulation of sawdust and wood chips and should be blown out or “vacuumed” frequently to prevent interference with normal motor ventilation.

## Lubrication

**⚠ WARNING:** Unplug the jointer/planer. Unit could start suddenly. You could be badly hurt.

The ball bearings in this machine are packed with grease at the factory. They required no further lubrication.

The following parts should be oiled occasionally with SAE No. 20 or No. 30 engine oil.

1. Dovetail spacer and dovetail slide.
2. Elevation screw (first clean if necessary).

## Wiring Diagram

