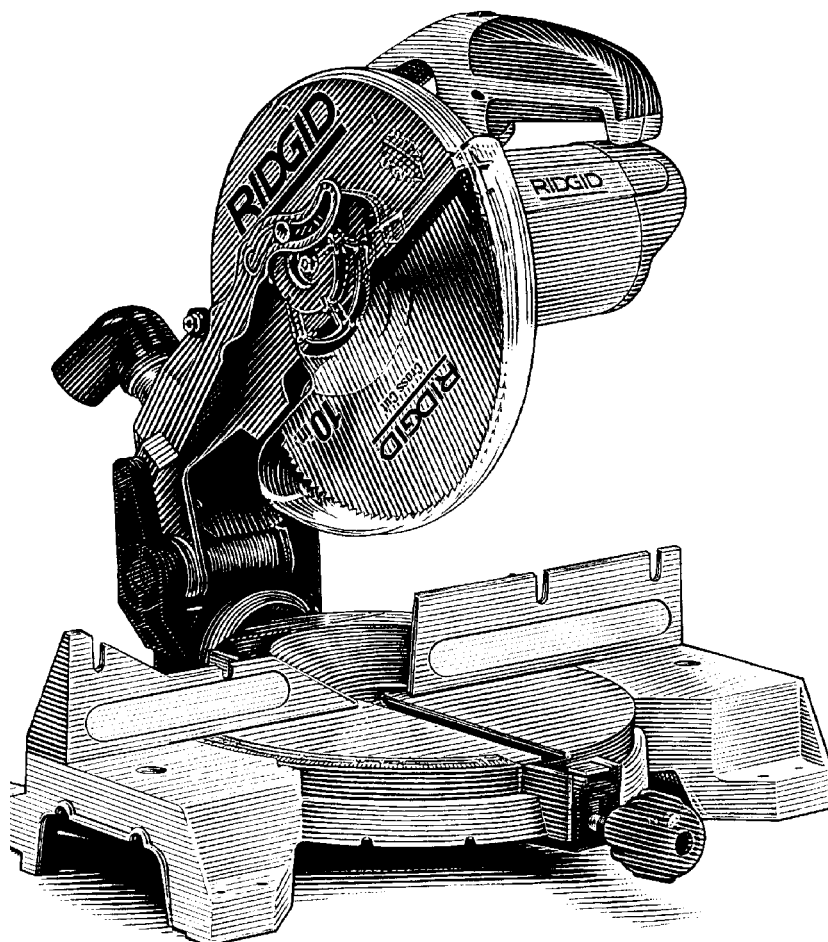


# **MS1050 OWNER'S MANUAL**



## **10 INCH COMPOUND MITER SAW**

- **Assembly**
- **Operation**
- **Repair Parts**

### **For Your Safety:**

**Read all instructions carefully**

**QUESTIONS OR COMMENTS?**

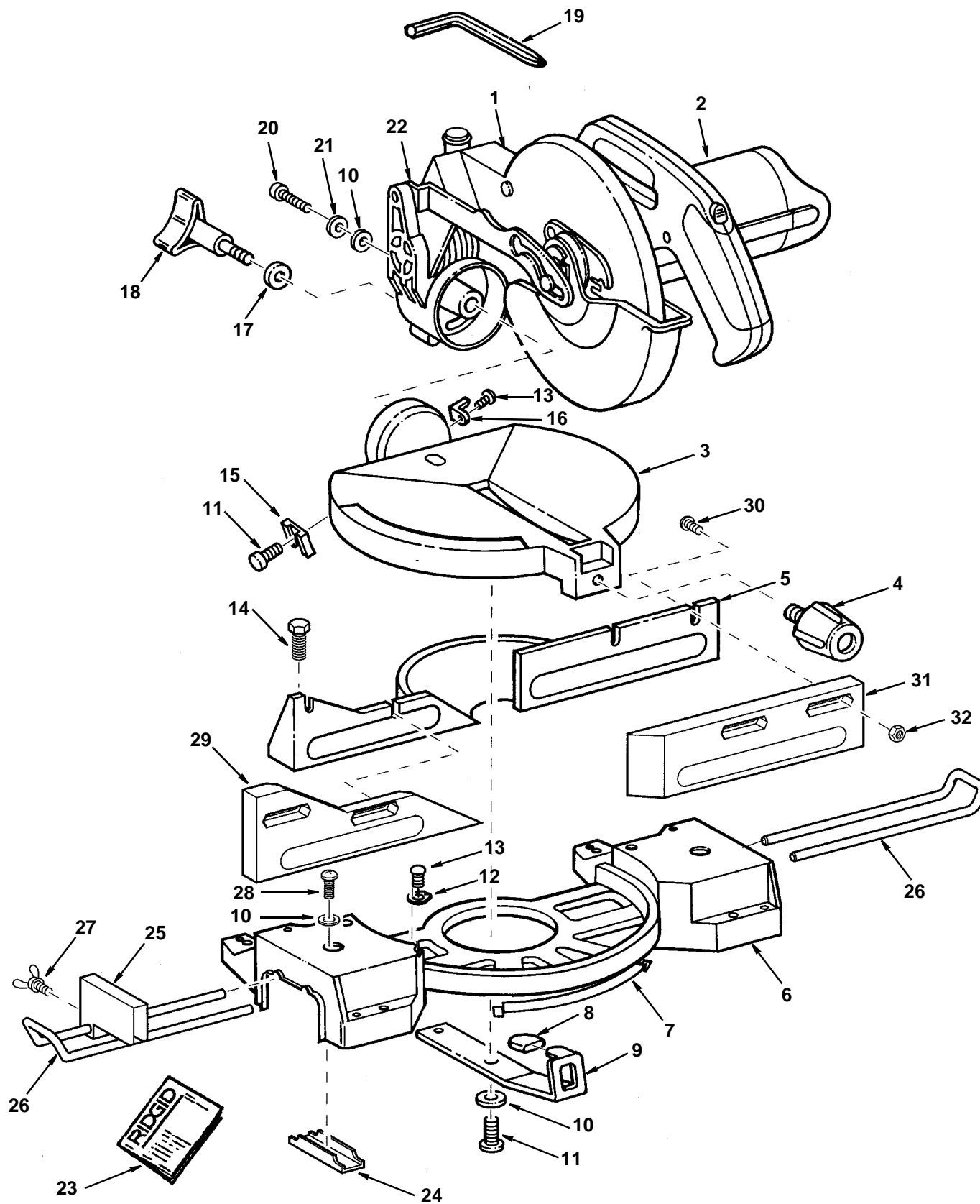
**CALL 1-800-4-RIDGID**

**[www.ridgidwoodworking.com](http://www.ridgidwoodworking.com)**

## Parts List for RIDGID 10" Compound Miter Saw Model No. MS10501

RIDGID parts are available on-line at [www.ridgidparts.com](http://www.ridgidparts.com)

Figure 1



# Repair Parts

## Parts List for RIDGID 10" Compound Miter Saw Model No. MS10501

RIDGID parts are available on-line at [www.ridgidparts.com](http://www.ridgidparts.com)

### Figure 1

Always order by Part Number - Not by Key Number

Key No.	Part No.	Description	Key No.	Part No.	Description
1	See Fig. 4	Blade Guard Assembly	17	*	Washer 3/8 x 7/8 x 5/64
2	See Fig. 2	Motor Assembly	18	827597	Knob Bevel
3	826213	Table	19	823314	Wrench Combination
4	826055-1	▲ Knob	20	*	Screw Hex Type "T" 5/16-18 x 3/4
5	826078	Fence	21	821421-6	O-Ring
6	826073-1	Base	22	See Fig. 3	Pivot Asm.
7	827588	Shim Table	23	SP6236	Owners Manual
8	826163	Cap Grip	24	823612	Clamp Bracket
9	823297-1	Spring Index	25	817793	Stop Block
10	805553-4	▲ Washer 21/64 x 9/16 x 1/16	26	817791	Arm Extension
11	9421621	▲ Scr Soc Cap 5/16-18 x 5/8	27	*	Screw Wing 1/4-20 x 1/2
12	826057	Pointer	28	*	Screw Pan Hd. 5/16-18 x 1-1/4
13	*	Screw Pan Hd. Type "T" 8-32 x 5/16	29	826718	Fence Auxiliary Left
14	*	Screw Hex Type "T" 5/16-18 x 1	30	*	Screw Pan Hd. 1/4-20 x 3/4
15	823326	Stop Bevel	31	826719	Fence Auxiliary Right
16	826068	Indicator Bevel	32	*	Nut Hex 1/4-20

\* Standard hardware item - may be purchased locally.

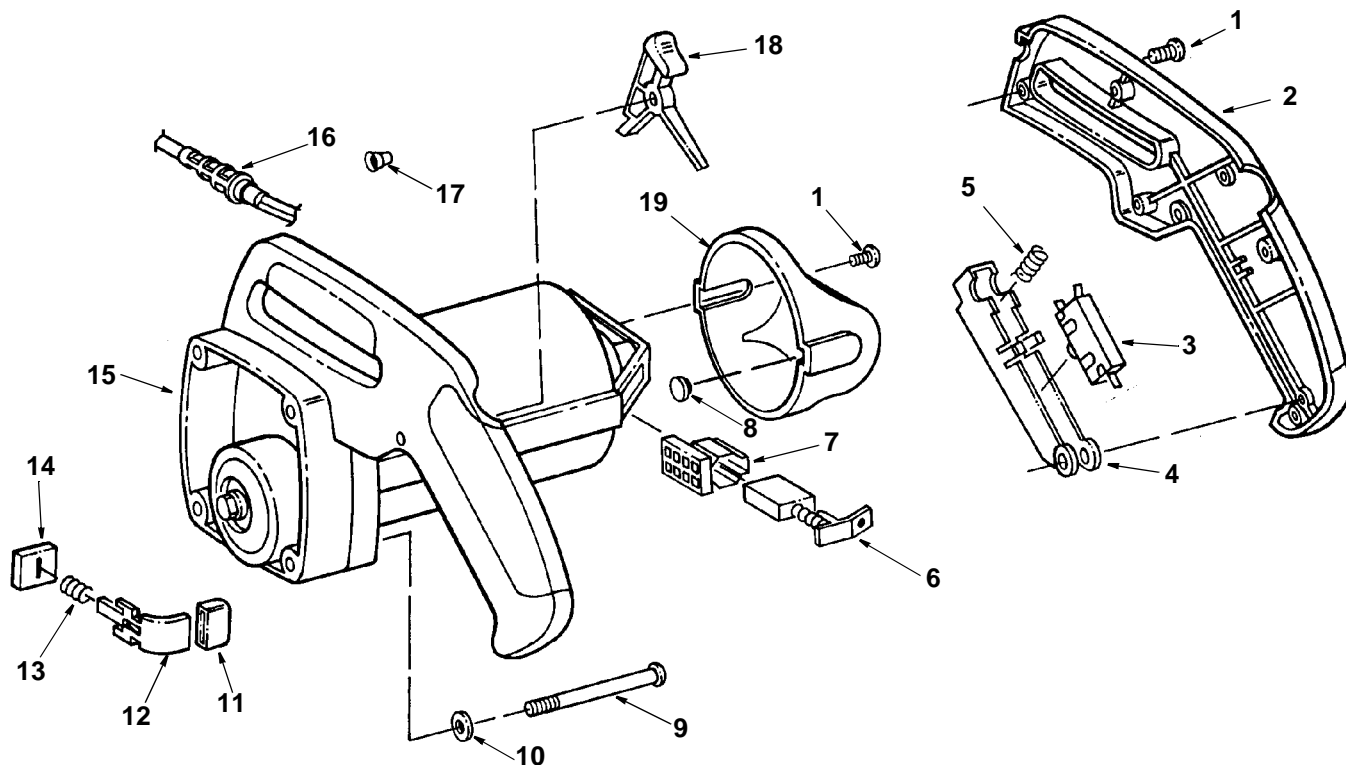
**▲ WARNING: These items are important to the safety of this tool. Do not substitute common parts.**

# Repair Parts

## Parts List For RIDGID 10" Compound Miter Saw Model No. MS10501

RIDGID parts are available on-line at [www.ridgidparts.com](http://www.ridgidparts.com)

Figure 2 Motor Assembly



**WARNING:** For your safety, this miter saw is specially insulated. To reduce the risk of electrical shock, fire or injury, use only parts identical to those identified in the parts list. Reassemble exactly as originally assembled.

Always order by Part Number — Not by Key Number

Key No.	Part No.	Description
1	*	Screw Pan Cr #8 Plastite
2	826119	Handle Right Half
3	826066	▲ Switch SPDT
4	826012	Trigger
5	826053	▲ Spring Compression
6	826016	▲ Brush
7	826017	▲ Holder Brush
8	354653	Bumper
9	826453	Screw Pn. Hd. 10-32 x 2-1/4
10	*	Washer 13/64 x 3/8 x 1/32

Key No.	Part No.	Description
11	826163	Cap Grip
12	826062	Lock Arbor
13	823322	Spring Arbor Lock
14	823417	Seal
15	826488	▲ Motor
16	826040	▲ Cord w/Plug
17	803709-1	▲ Connector Wire
18	826120	▲ Button Lock
19	826064	Cap Motor Housing

\* Standard hardware - may be purchased locally

**▲ WARNING:** These items are important to the safety of this tool. Do not substitute common parts.

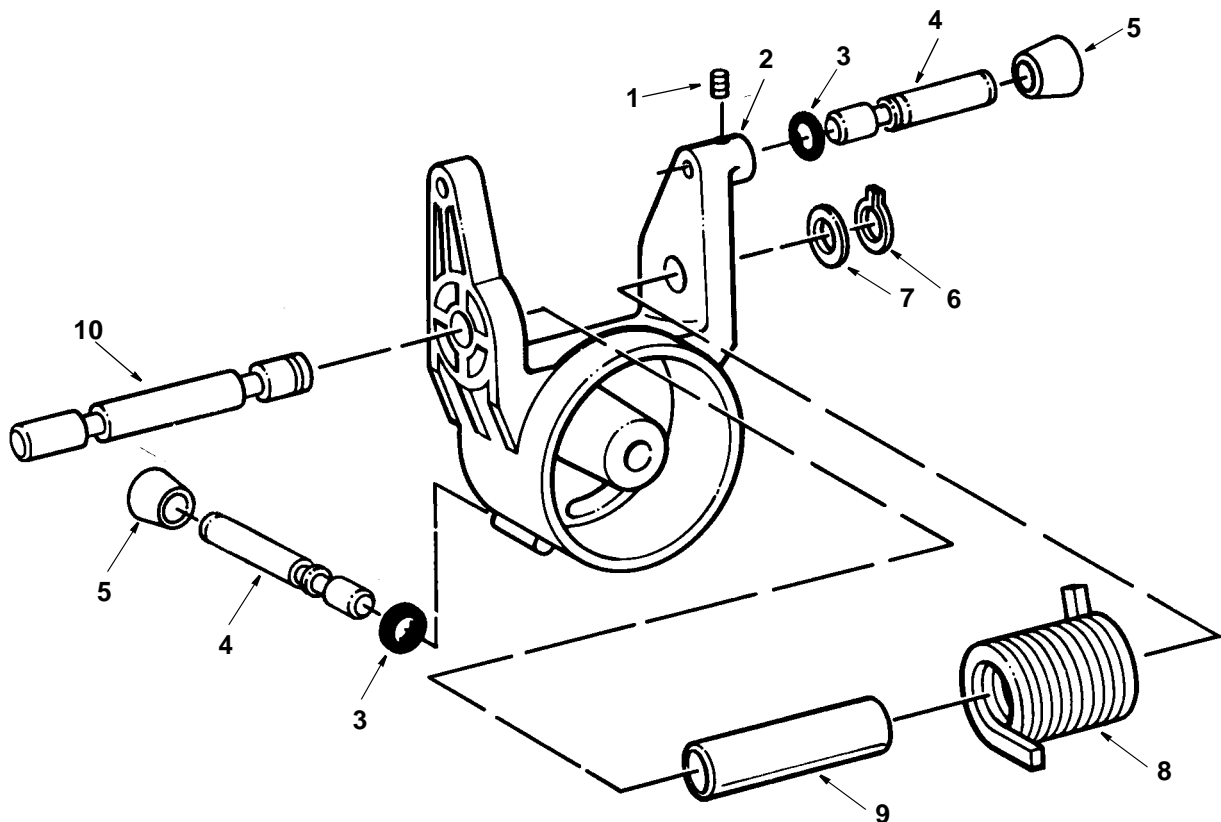
• **WARNING:** Any attempt to repair or replace electrical parts on this unit may create a hazard unless repair is done by a qualified service technician. Repair service is available from authorized RIDGID Service Center.

# Repair Parts

## Parts List For RIDGID 10" Compound Miter Saw Model No. MS10501

RIDGID parts are available on-line at [www.ridgidparts.com](http://www.ridgidparts.com)

Figure 3 - Pivot Assembly



Always order by Part Number — Not by Key Number

Key No.	Part No.	Description
1	803309-2	Screw Set Hex Soc. Locking 10-32 x 3/8
2	826096	Pivot
3	821421-2	O-Ring
4	826058	Shaft Stop
5	826357	Knob
6	805606	Ring Retaining
7	803899-5	Washer Thrust
8	823328	▲ • ‡ Spring Torsion
9	823298-1	Spacer Spring
10	823301	Shaft Pivot

\* Standard hardware - may be purchased locally

**▲ WARNING:** These items are important to the safety of this tool. Do not substitute common parts.

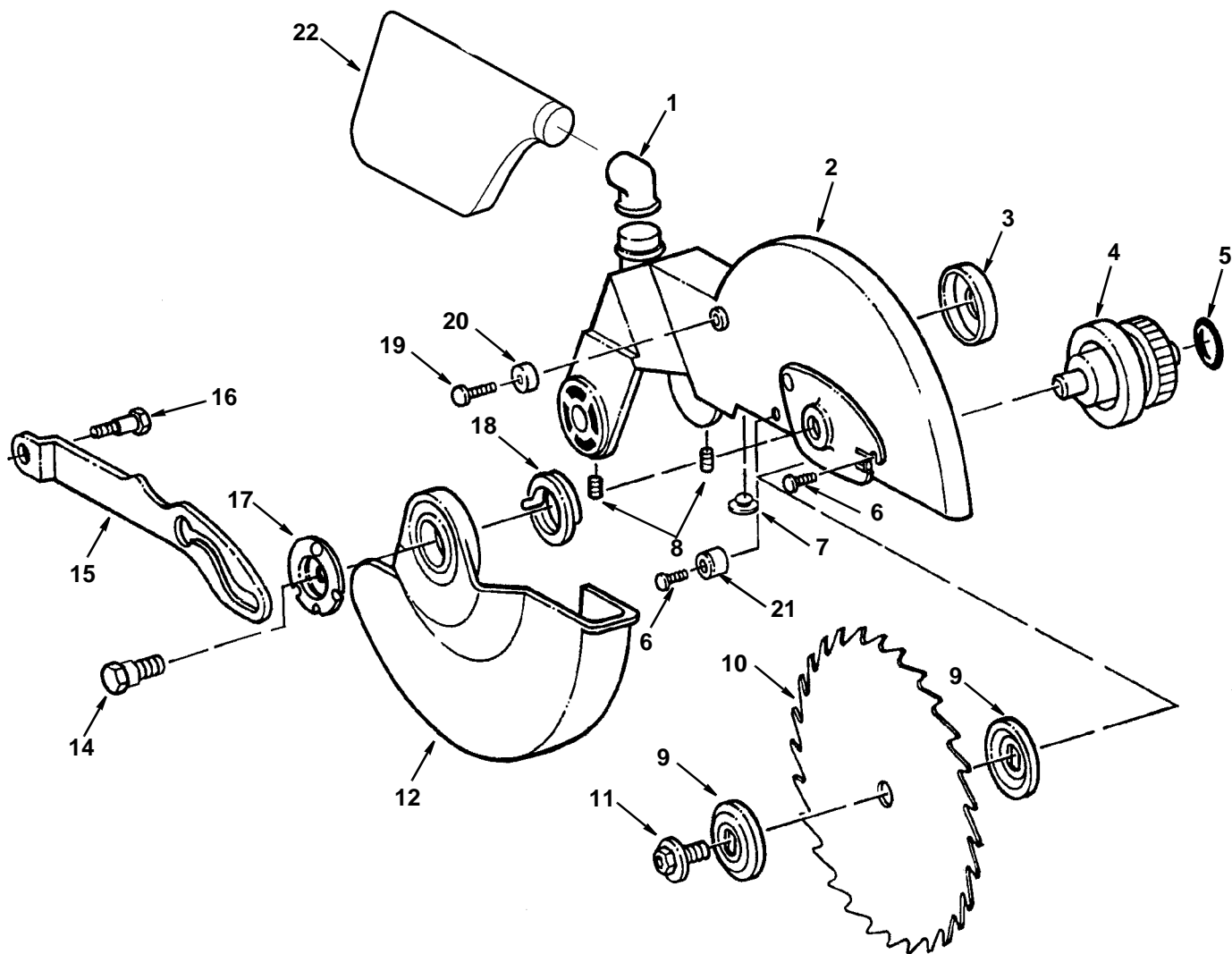
**‡ CAUTION:** See mechanical assembly caution on page 31.

• **WARNING:** Uncontrolled spring release or misinstallation of these parts may create a hazard unless repair is done by a qualified service technician. Repair service is available from authorized RIDGID Service Center.

## Parts List For RIDGID 10" Compound Miter Saw Model No. MS10501

RIDGID parts are available on-line at [www.ridgidparts.com](http://www.ridgidparts.com)

Figure 4



# Repair Parts

## Parts List For RIDGID 10" Compound Miter Saw Model No. MS10501

RIDGID parts are available on-line at [www.ridgidparts.com](http://www.ridgidparts.com)

**Figure 4**

Always order by Part Number — Not by Key Number

Key No.	Part No.	Description	Key No.	Part No.	Description
1	820536	Dust Elbow	12	826039	‡ Guard Lower
2	826487	Arm/Guard	13		
3	823300-1	Washer Cup	14	821521-2	▲ Screw Shoulder
4	823316	Arbor	15	826026	Link Actuator
5	821421-3	Ring "O"	16	821521-1	▲ Screw Shoulder
6	*	Screw Pan Cr Ty "T" 10-32 x 5/8	17	823840-2	Retainer Guard
7	826031	Bumper Guard	18	823292	•‡ Spring Guard
8	826481	Screw Lock Set 1/4-20 x 3/8	19	821521	Screw Shoulder
9	823303	▲ Collar Blade	20	823306-1	Bearing Cam
10	827413	Blade Saw Carbide	21	826720	Bumper
11	823304	Screw Blade	22	816811	Bag Dust

\* Standard hardware - may be purchased locally

**▲ WARNING: These items are important to the safety of this tool. Do not substitute common parts.**

**‡ CAUTION: See mechanical assembly caution below.**

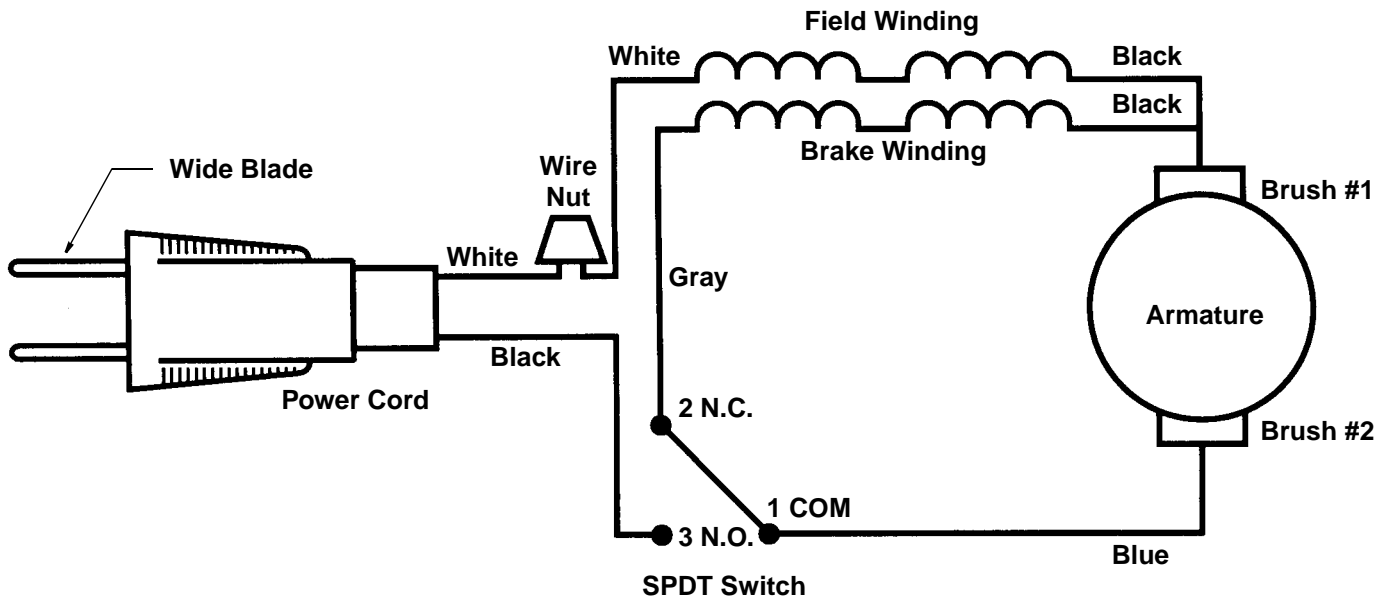
- **WARNING: Uncontrolled spring release or misinstallation of these parts may create a hazard unless repair is done by a qualified service technician. Repair service is available from authorized RIDGID Service Center.**

**CAUTION: Mechanical Assembly, to qualified service technician.**

1. Wear approved eye protection when working with coil spring including spring, arbor lock 823322.
2. Incorrect reassembly of torsion spring 823328 can cause an unsafe condition because cutting head fails to rise fully to stop, or because spring fails through over-stress.
3. Improper reassembly of mechanisms controlling movement of lower guard 826039 can cause an unsafe condition because guard fails to operate freely as cutting head is moved up and down.

## Wiring Diagram

---



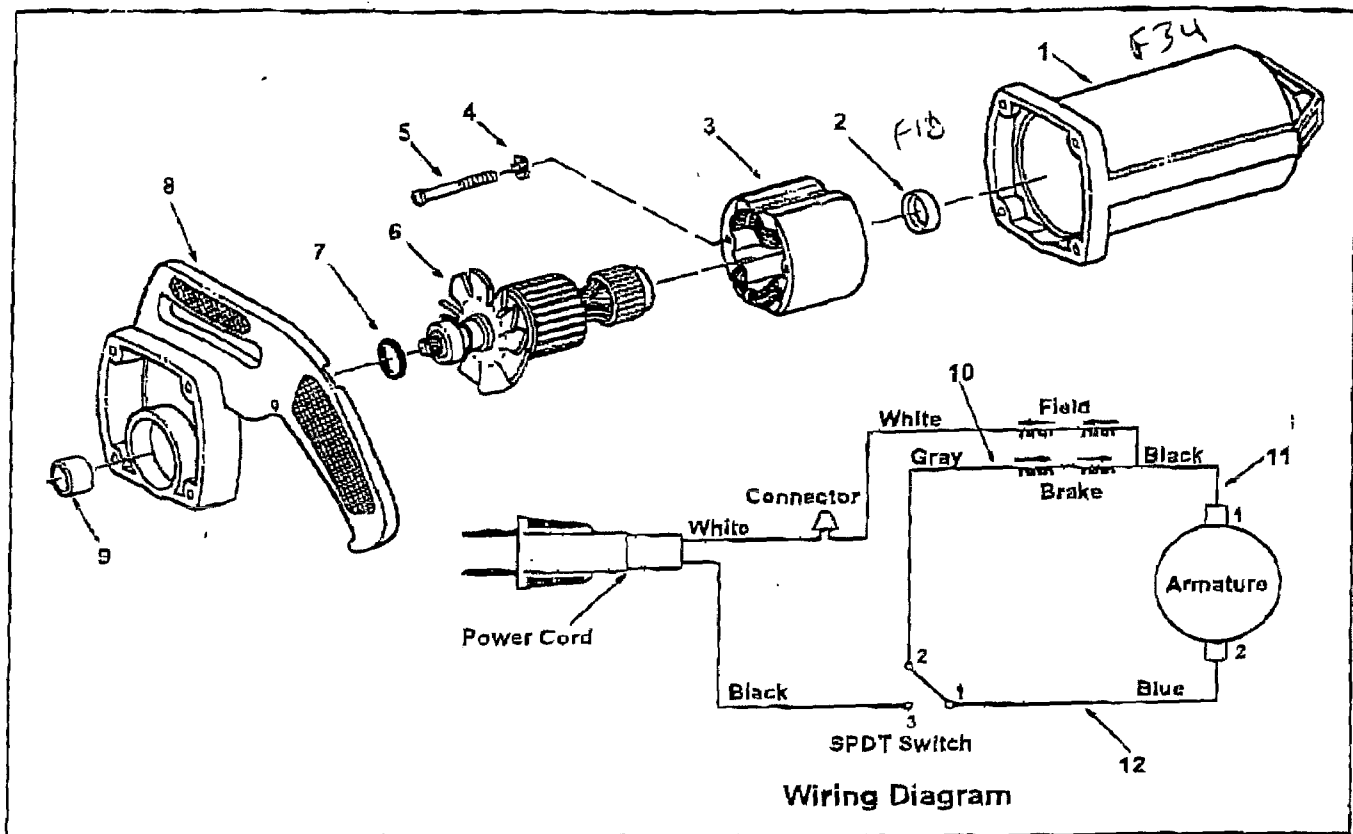
---

### Troubleshooting Of Brake By Qualified Service Person Only

1. Check commutation at no load. If there is a heavy sparking which follows the curvature of the commutator replace the armature.
2. To continue trouble shooting, now unplug the power cord.
3. Install new brushes, especially if delayed come-in of brake has been noticed before failure.
4. Check brake circuit for continuity: Remove motor cap and brushes. Use ohmmeter to check continuity from brush terminal to brush terminal. If open, locate exact place using ohmmeter. As indicated by test, tighten connection, replace field assembly, or replace switch.
5. After repair, check direction of blade rotation vs. guard arrow.



**Motor Parts List for RIDGID 10 Inch Miter Saw  
Model Nos. MS10500, MS10501**



When ordering repair parts, always give the following information as shown in this list:

- |                    |                     |
|--------------------|---------------------|
| 1. The part number | 3. The model no.    |
| 2. The part name   | 4. The name of item |

**Always order by part number - Not by key number**

**Motor Number 826488**

Key No.	Part No.	Description
1	825102	Housing Motor
2	326023	Sleeve
3	824988-3	Field
4	"	Lockwasher #10
5	808380-13	Screw Pan Hd. #8 x 2-1/4
6	824986-3	Armature
7	821421-5	Ring "O"
8	826013	Housing Gear
9	818682	Bearing Needle HK0910
10	824987-2	Lead Gray
11	824987	Lead Black
12	823264-6	Lead Blue
—	509241	Grease (Not Illustrated)

\* Standard Hardware Item - May be Purchased Locally