

## Parts List for RIDGID 10" Compound Miter Saw Model No. MS1065LZ

RIDGID parts are available on-line at [www.ridgidparts.com](http://www.ridgidparts.com)

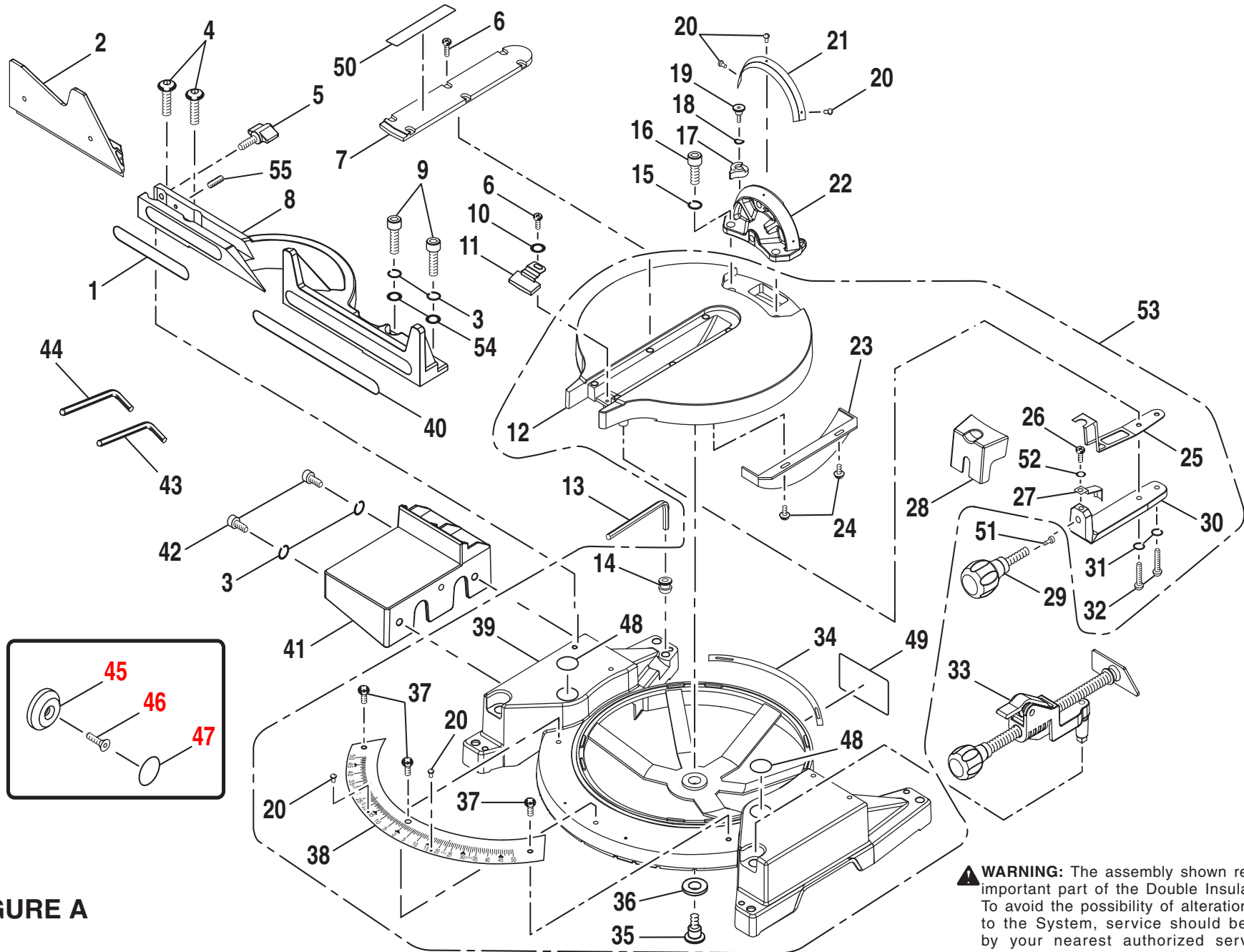


FIGURE A

## Parts List for RIDGID 10" Compound Miter Saw Model No. MS1065LZ

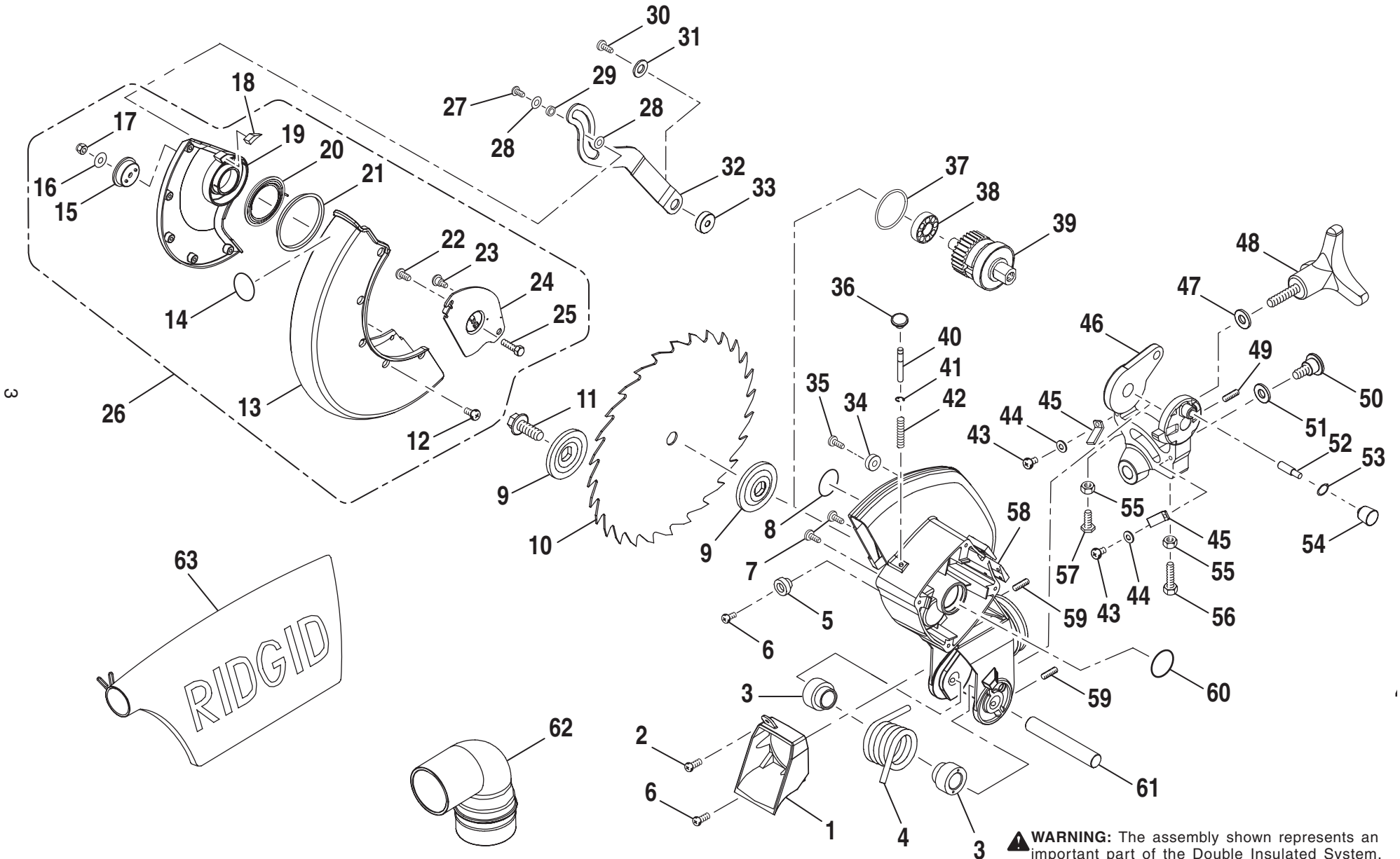
RIDGID parts are available on-line at [www.ridgidparts.com](http://www.ridgidparts.com)

### PARTS LIST FOR FIGURE A

| Key No. | Part Number  | Description                     | Quan. | Key No. | Part Number  | Description                     | Quan. |
|---------|--------------|---------------------------------|-------|---------|--------------|---------------------------------|-------|
| 1       | 503120000    | LABEL .....                     | 1     | 29      | 503105000    | TABLE LOCK KNOB .....           | 1     |
| 2       | 503116000    | SLIDING MITER FENCE.....        | 1     | 30      | 503110000    | CONTROL ARM .....               | 1     |
| 3       | A36070814200 | SPRING WASHER (M8).....         | 2     | 31      | A36070612150 | SPRING WASHER (M6) .....        | 2     |
| 4       | 503122000    | SCREW (M8 X 25L) .....          | 2     | 32      | A08007060250 | SCREW (M6 X 25L).....           | 2     |
| 5       | 503117000    | KNOB .....                      | 1     | 33      | 503A07010    | WORK CLAMP ASSEMBLY .....       | 1     |
| 6       | A10007040100 | SCREW (M4 X 10L) .....          | 7     | 34      | 503103000    | WEAR STRIP.....                 | 2     |
| 7       | 503114000    | THROAT PLATE .....              | 1     | 35      | 503111000    | TABLE SPINDLE .....             | 1     |
| 8       | 503115000    | FENCE .....                     | 1     | 36      | 503112000    | WASHER .....                    | 1     |
| 9       | 503122000    | SCREW (M8 X 25L SOC. HD.).....  | 2     | 37      | A10007050100 | SCREW (M5 X 10L) .....          | 3     |
| 10      | A35070410010 | FLAT WASHER (M4) .....          | 1     | 38      | 503102000    | MITER SCALE .....               | 1     |
| 11      | 503113000    | MITER SCALE INDICATOR .....     | 1     | 39      | 503101000    | MITER TABLE FRAME .....         | 1     |
| 12      | 503104000    | MITER TABLE .....               | 1     | 40      | 503119000    | LABEL.....                      | 1     |
| 13      | A07810500000 | HEX KEY (5mm) .....             | 1     | 41      | 503502000    | TABLE EXTENSION.....            | 1     |
| 14      | 503118000    | HEX KEY HOLDER.....             | 1     | 42      | A07007080150 | SCREW (M8 X 15L SOC. HD.) ..... | 2     |
| 15      | A36071018250 | SPRING WASHER (M10).....        | 1     | 43      | A07910610000 | HEX KEY (6mm) .....             | 1     |
| 16      | A07007100350 | SCREW (M10 X 35L SOC. HD.)..... | 1     | 44      | A07910810000 | HEX KEY (8mm).....              | 1     |
| 17      | 503209000    | BEVEL ANGLE PIVOT .....         | 1     | 45      | 511504000    | LASER GUIDE.....                | 1     |
| 18      | A63020000040 | O-RING .....                    | 1     | 46      | 511505000    | LASER GUIDE BOLT.....           | 1     |
| 19      | 503210000    | FIXED SCREW .....               | 1     | 47      | 511514000    | LASER WARNING LABEL.....        | 1     |
| 20      | A49010020056 | RIVET (2.5 X 5L).....           | 5     | 48      | 588072000    | HAND WARNING LABEL .....        | 3     |
| 21      | 503207000    | BEVEL SCALE .....               | 1     | 49      | 503123000    | DATA PLATE .....                | 1     |
| 22      | 503202000    | BEVEL PIVOT BRACKET .....       | 1     | 50      | 503125000    | INSERT WARNING LABEL.....       | 1     |
| 23      | 503106000    | TABLE HOLD DOWN .....           | 1     | 51      | 503124000    | PUSH TIP.....                   | 1     |
| 24      | A19007040090 | SCREW (M4 X 9L) .....           | 2     | 52      | A35070511150 | FLAT WASHER .....               | 1     |
| 25      | 503107000    | LOCK PLATE.....                 | 1     | 53      | S50300400    | MITER TABLE ASSEMBLY .....      | 1     |
| 26      | A10007050083 | SCREW (M5 X 8L) .....           | 1     | 54      | A35070816150 | FLAT WASHER .....               | 2     |
| 27      | 503109000    | SPRING PLATE.....               | 1     | 55      | A18007040150 | FIXED SCREW (M4 X 15L) .....    | 1     |
| 28      | 503108000    | SLEEVE .....                    | 1     |         |              |                                 |       |

## Parts List for RIDGID 10" Compound Miter Saw Model No. MS1065LZ

RIDGID parts are available on-line at [www.ridgidparts.com](http://www.ridgidparts.com)



**FIGURE B**

**⚠ WARNING:** The assembly shown represents an important part of the Double Insulated System. To avoid the possibility of alteration or damage to the System, service should be performed by your nearest authorized service center.

## Parts List for RIDGID 10" Compound Miter Saw Model No. MS1065LZ

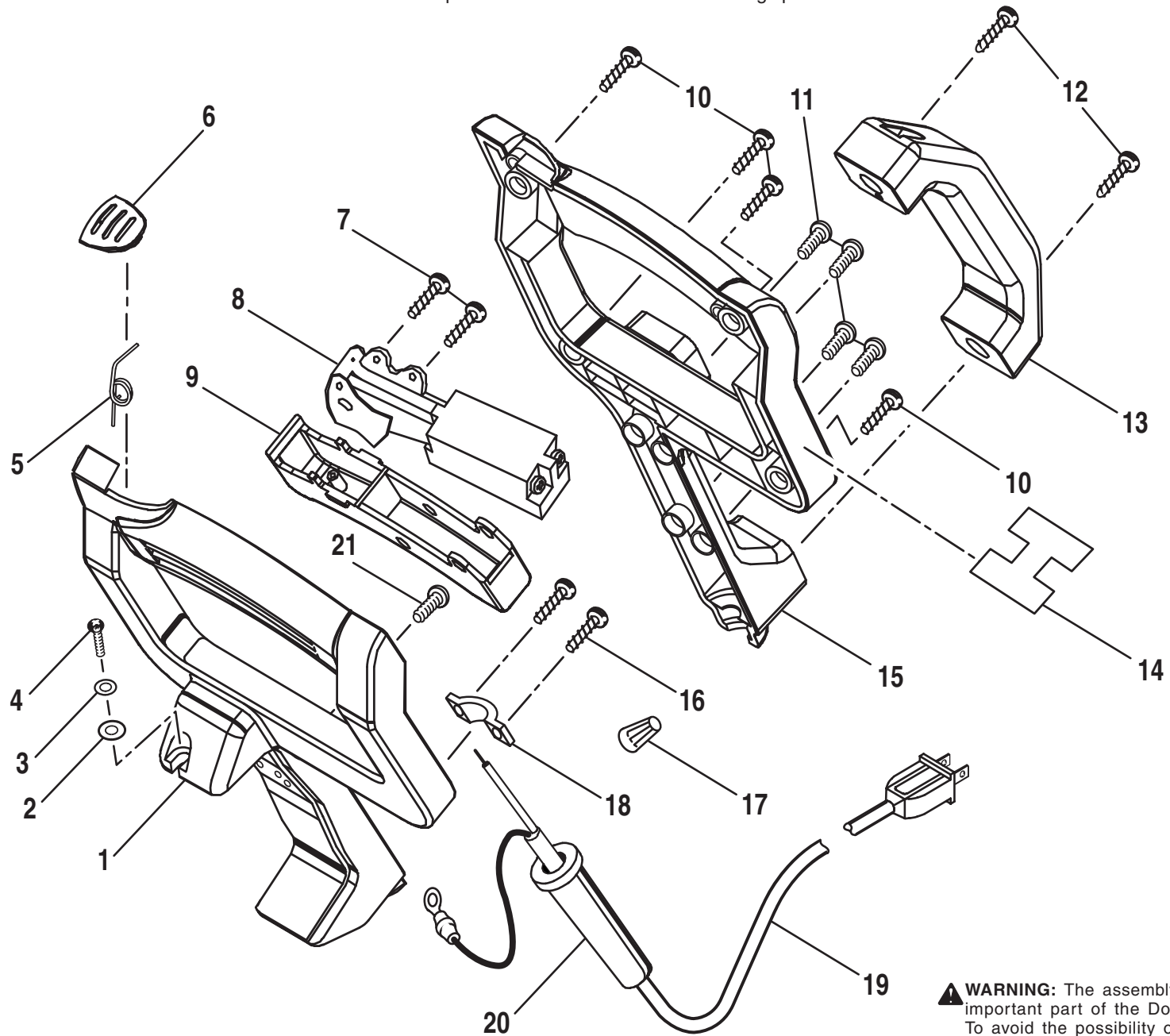
RIDGID parts are available on-line at [www.ridgidparts.com](http://www.ridgidparts.com)

### PARTS LIST FOR FIGURE B

| Key No. | Part Number  | Description                   | Quan. | Key No. | Part Number   | Description                          | Quan. |
|---------|--------------|-------------------------------|-------|---------|---------------|--------------------------------------|-------|
| 1       | 503320000    | DUST CHUTE .....              | 1     | 33      | 503411000     | LINK WASHER .....                    | 1     |
| 2       | A16007050050 | SCREW (M5 X 5L) .....         | 1     | 34      | 503304000     | ROLLER.....                          | 1     |
| 3       | 538327000    | SPACER .....                  | 2     | 35      | 503305000     | SCREW.....                           | 1     |
| 4       | 503319000    | TORSION SPRING .....          | 1     | 36      | 503303000     | SPINDLE KNOB (CAP).....              | 1     |
| 5       | 503306000    | RUBBER SLEEVE.....            | 1     | 37      | A63020000428  | O-RING .....                         | 1     |
| 6       | A10007050100 | SCREW (M5 X 10L) .....        | 2     | 38      | A50060000027  | BALL BEARING .....                   | 1     |
| 7       | 588031004    | FIXED SCREW .....             | 2     | 39      | 503A04010     | ARBOR SHAFT ASSEMBLY (INC. 38) ..... | 1     |
| 8       | 503329000    | UPPER ARM WARNING LABEL ..... | 1     | 40      | 503302000     | SPINDLE LOCK PIN.....                | 1     |
| 9       | 588035105    | FLANGE .....                  | 2     | 41      | A47000040006  | E-RING .....                         | 1     |
| 10      | 503501000    | BLADE.....                    | 1     | 42      | 588027005     | COMPRESSION SPRING .....             | 1     |
| 11      | 503412000    | SCREW .....                   | 1     | 43      | A10007040100  | SCREW (M4 X 10L).....                | 2     |
| 12      | 503402000    | T-SCREW .....                 | 5     | 44      | A35070406010  | FLAT WASHER (M4).....                | 2     |
| 13      | 503401000    | LOWER GUARD .....             | 1     | 45      | 503204000     | INDICATOR.....                       | 2     |
| 14      | 588072000    | HAND WARNING LABEL.....       | 3     | 46      | 503201000     | SUPPORT BRACKET .....                | 1     |
| 15      | 503407000    | BALL BEARING .....            | 1     | 47      | A35071025150  | FLAT WASHER (M10).....               | 1     |
| 16      | A35070619150 | FLAT WASHER (M6) .....        | 1     | 48      | 503203000     | BEVEL LOCK KNOB .....                | 1     |
| 17      | A31707006000 | LOCK NUT (M6).....            | 1     | 49      | A18007040080  | FIXED SCREW (M4 X 8L) .....          | 1     |
| 18      | 503414000    | SPONGE .....                  | 1     | 50      | 503208000     | PIVOT SHAFT.....                     | 1     |
| 19      | 503403000    | GUARD PLATE.....              | 1     | 51      | 589011308     | WASHER .....                         | 1     |
| 20      | 503406000    | TENSION SPRING.....           | 1     | 52      | 503205000     | STOP PIN .....                       | 1     |
| 21      | 503413000    | INNER PAD .....               | 1     | 53      | A630000000051 | O-RING .....                         | 1     |
| 22      | A19007050090 | SCREW (M5 X 9L) .....         | 1     | 54      | 503206000     | SPINDLE KNOB (CAP).....              | 1     |
| 23      | 503405000    | SCREW .....                   | 1     | 55      | A30007006369  | NUT (M6) .....                       | 2     |
| 24      | 503404000    | BLADE BOLT COVER .....        | 1     | 56      | A01007060160  | BOLT (M6 X M16 HEX HD.).....         | 1     |
| 25      | 503415000    | BOLT .....                    | 1     | 57      | 503415000     | BOLT .....                           | 1     |
| 26      | S50300300    | LOWER GUARD ASSEMBLY.....     | 1     | 58      | S50300200     | UPPER BLADE GUARD ASSEMBLY .....     | 1     |
| 27      | A10007050150 | SCREW (M5 X 15L) .....        | 1     | 59      | A18007060150  | FIXED SCREW (M6 X 15L) .....         | 2     |
| 28      | 503410000    | WASHER.....                   | 2     | 60      | A63020000320  | O-RING .....                         | 1     |
| 29      | A50010500020 | SPACER .....                  | 1     | 61      | 503321000     | SHAFT .....                          | 1     |
| 30      | A10007060200 | SCREW (M6 X 20L) .....        | 1     | 62      | 503503000     | DUST GUIDE.....                      | 1     |
| 31      | A35070619150 | FLAT WASHER (M6) .....        | 1     | 63      | 503512000     | DUST BAG.....                        | 1     |
| 32      | 503408000    | LINK ASSEMBLY .....           | 1     |         |               |                                      |       |

## Parts List for RIDGID 10" Compound Miter Saw Model No. MS1065LZ

RIDGID parts are available on-line at [www.ridgidparts.com](http://www.ridgidparts.com)



5

FIGURE C

**⚠ WARNING:** The assembly shown represents an important part of the Double Insulated System. To avoid the possibility of alteration or damage to the System, service should be performed by your nearest authorized service center.

## Parts List for RIDGID 10" Compound Miter Saw Model No. MS1065LZ

RIDGID parts are available on-line at [www.ridgidparts.com](http://www.ridgidparts.com)

### PARTS LIST FOR FIGURE C

| Key No. | Part Number  | Description             | Quan. | Key No. | Part Number  | Description            | Quan. |
|---------|--------------|-------------------------|-------|---------|--------------|------------------------|-------|
| 1       | 503311000    | LOWER HANDLE .....      | 1     | 12      | A29007050200 | SCREW (M5 X 20L) ..... | 2     |
| 2       | A35070410010 | FLAT WASHER (M4) .....  | 1     | 13      | 503315000    | CARRYING HANDLE .....  | 1     |
| 3       | A36030407016 | SPRING WASHER (M4)..... | 1     | 14      | 503326000    | WARNING LABEL .....    | 1     |
| 4       | A10003040100 | SCREW (M4 X 10L) .....  | 1     | 15      | 503310000    | UPPER HANDLE .....     | 1     |
| 5       | 503316000    | SPRING.....             | 1     | 16      | A90007040120 | SCREW (M4 X 12L) ..... | 2     |
| 6       | 503314000    | SAFETY BUTTON .....     | 1     | 17      | 503324000    | ELECTRICAL NUT.....    | 1     |
| 7       | A29007040080 | SCREW (M4 X 8L) .....   | 2     | 18      | 578313006    | CORD CLAMP .....       | 1     |
| 8       | 503317000    | SWITCH .....            | 1     | 19      | 503318000    | POWER CORD .....       | 1     |
| 9       | 503313000    | TRIGGER.....            | 1     | 20      | 588004100    | CORD BEND RELIEF ..... | 1     |
| 10      | A29007040140 | SCREW (M4 X 14L) .....  | 4     | 21      | A10007050083 | SCREW (M5 X 8L) .....  | 1     |
| 11      | A19007050180 | SCREW (M5 X 18L) .....  | 4     |         |              |                        |       |

## Parts List for RIDGID 10" Compound Miter Saw Model No. MS1065LZ

RIDGID parts are available on-line at [www.ridgidparts.com](http://www.ridgidparts.com)

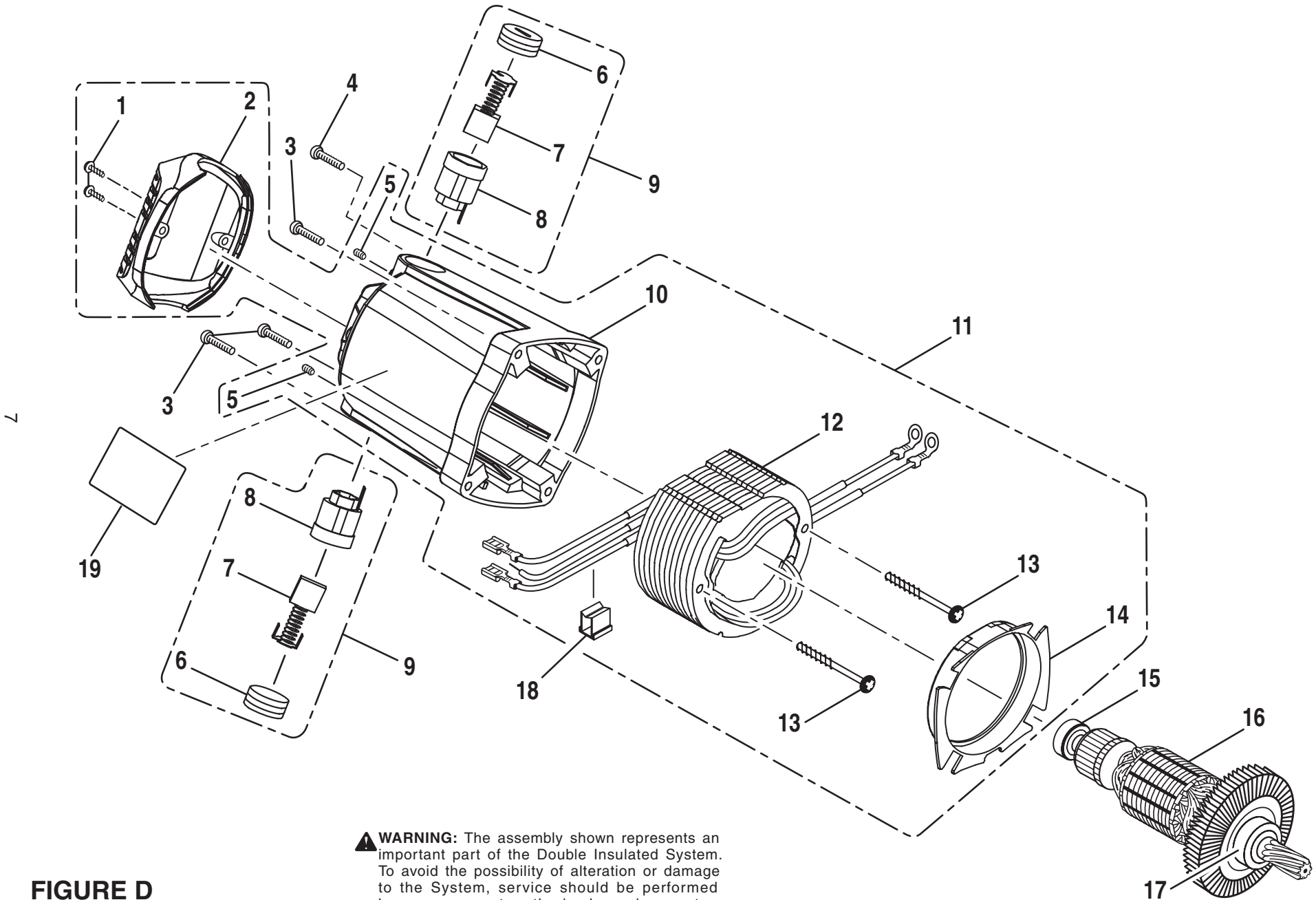


FIGURE D

**WARNING:** The assembly shown represents an important part of the Double Insulated System. To avoid the possibility of alteration or damage to the System, service should be performed by your nearest authorized service center.



## Parts List for RIDGID 10" Compound Miter Saw Model No. MS1065LZ

RIDGID parts are available on-line at [www.ridgidparts.com](http://www.ridgidparts.com)

### PARTS LIST FOR FIGURE D

| Key No. | Part Number  | Description                | Quan. |
|---------|--------------|----------------------------|-------|
| 1       | A29007040080 | SCREW (M4 X 8L) .....      | 2     |
| 2       | 503309000    | END CAP .....              | 1     |
| 3       | A19007050250 | SCREW (M5 X 25L) .....     | 3     |
| 4       | A19007050200 | SCREW (M5 X 20L) .....     | 1     |
| 5       | A18007050080 | FIXED SCREW (M5 X 8L)..... | 2     |
| 6       | 503326000    | BRUSH CAP .....            | 2     |
| 7       | 588006100    | BRUSH .....                | 2     |
| 8       | 503322000    | BRUSH HOLDER .....         | 2     |
| 9       | S50300100    | BRUSH ASSEMBLY .....       | 2     |
| 10      | 503308000    | MOTOR HOUSING .....        | 1     |

∞

| Key No. | Part Number         | Description                              | Quan. |
|---------|---------------------|--|-------|
| 11      | S50300500           | MOTOR ASSEMBLY .....                     | 1     |
| 12      | 9053D02000          | FIELD ASSEMBLY .....                     | 1     |
| 13      | A90107050600        | SCREW (M5 X 60L) .....                   | 2     |
| 14      | 503312000           | FAN CASING .....                         | 1     |
| 15      | A50060020056        | BALL BEARING .....                       | 1     |
| 16      | 9053C01000          | ARMATURE ASSEMBLY (INC. # 15 & 17) ..... | 1     |
| 17      | A50006080049        | BALL BEARING .....                       | 1     |
| 18      | 503323000           | LEAD SLEEVE .....                        | 1     |
| 19      | 503328000           | WARNING LABEL .....                      | 1     |
|         | 983000-234R<br>8-03 | OPERATOR'S MANUAL                        |       |