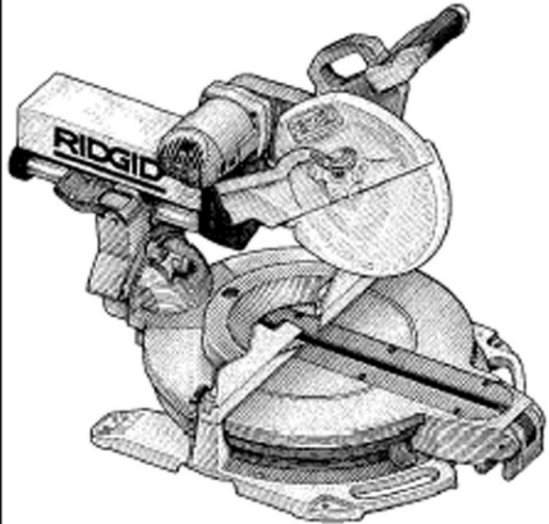


RIDGID®

MS1290LZ OPERATORS MANUAL



12" SLIDING COMPOUND MITER SAW with EXACTLINE™



WARNING:

Read and follow all Safety Rules before first use of this product.

Call Us 1st

For any questions about:

- Operation
- Warranty (See back cover)
- Technical Assistance
- Repair Parts

Please have your Model Number and Serial Number on hand when calling.

1-866-539-1710

RIDGID Parts.com

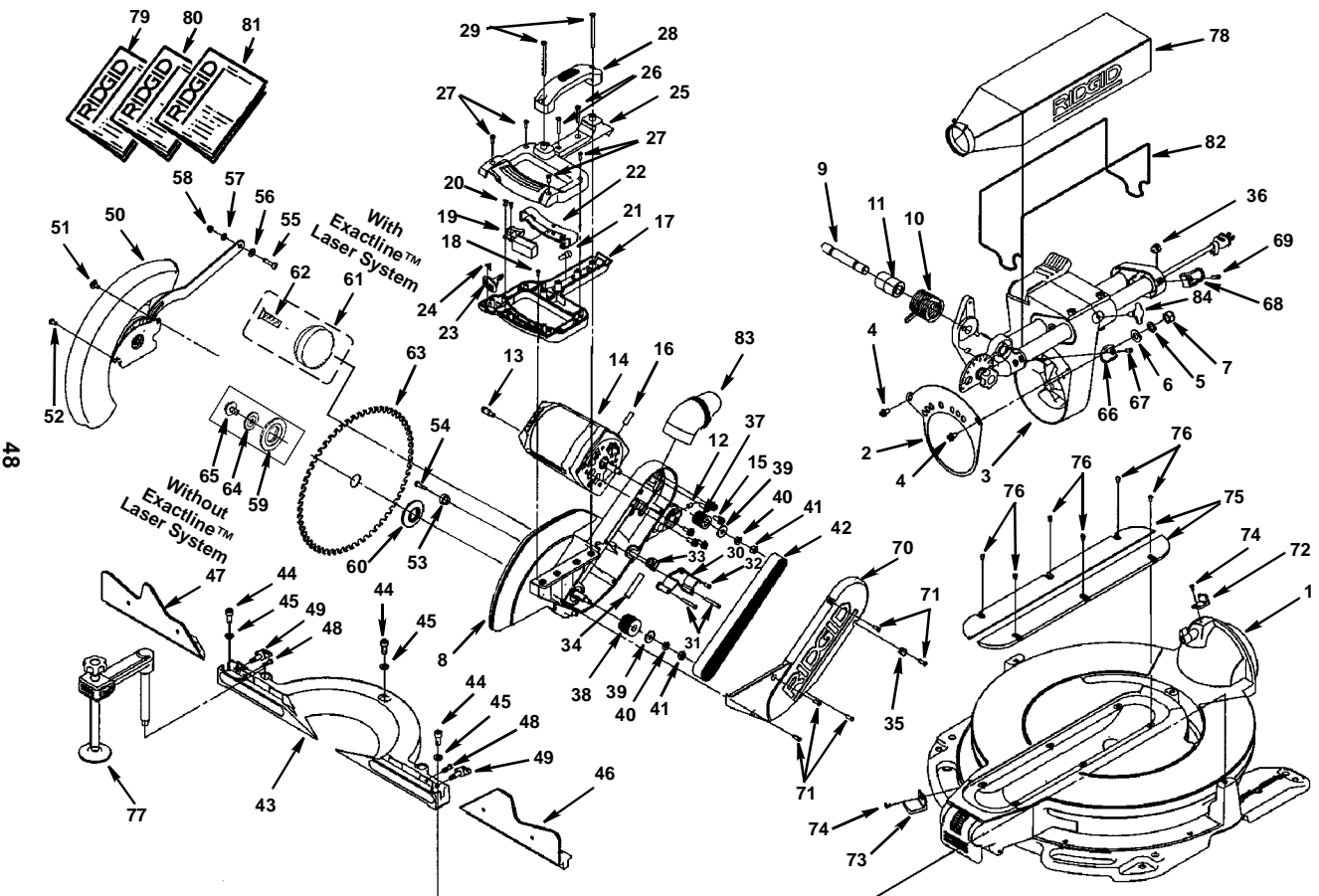
POWER TOOL PARTS
& ACCESSORIES

Parts List For RIDGID 12" Slide Compound Miter Saw

Model No. MS1290LZ 0

RIDGID parts are available on-line at www.ridgidparts.com

Figure 1



Repair Parts

Parts List For RIDGID 12" Compound Miter Saw Model No. MS1290LZ 0

RIDGID parts are available on-line at www.ridgidparts.com

Figure 1

Always order by part number - not by key number

Key No.	Part No.	Description	Key No.	Part No.	Description
1	830122	Base/Table Asm (See Fig. 2)	44	830129	Screw, Soc Cap M8 x 1.25 x 20
2	830008	Scale, Bevel	45	821063-6	* Washer 8 x 16 x 1.2
3	830007	Pivot Asm (See Fig. 5)	46	830005	Fence, Right Sliding
4	830009	* Screw, M6 x 1.0 x 12	47	830006	Fence, Left Sliding
5	828117	* Washer, 12.2 x 22 x 2	48	820244-6	* Screw, Pan Hd M6 x 20
6	819179	* Washer, Spring 12.7 x 22 x 0.33	49	830004	Knob, Fence Lock
7	818656	Nut, Lock	50	830040	Guard Asm, Lower (See Fig. 9)
8	830022	Arm Guard Asm (See Fig. 8)	51	821873	Screw, Shoulder 10-32 x 1/2
9	823344	Shaft, Arm Pivot	52	809372-3	* Screw, Pan Hd 10-32 x 1/2
10	830131	‡ Spring, Torsion	53	827498	Sleeve, Rubber
11	830111	Spacer, Spring	54	821878	Screw, Shoulder, 10-32 x 7/8
12	828040	Screw, Set Lock M6 x 10	55	821875	Screw, Shoulder, M6 x 22
13	830023	Pin, Up Stop	56	821063-1	* Washer 8 x 16 x 0.5
14	830024	Motor Asm (See Fig. 10)	57	820238-5	* Washer 6.5 x 13 x 0.8
15	830025	* Screw M6 x 16	58	817449-1	* Nut, Hex Lock M6 x 1.0
16	830164	Screw, Set Lock M8 x 25	59	830524	Collar, Blade (Outer)
17	830037	Handle, Lower	60	830526	Collar, Blade (Inner)
18	813312	Screw, Pan Hd M4 x 10	61	830527	Exactline™ Laser System
19	823494	• Switch	62	830522	Screw Blade (Used w/Key 61 Only)
20	828122-1	* Screw, Pan Hd Ty E M4 x 10	63	830000	Blade
21	803709-1	• Connector, Wire	64	816720	Washer, Blade
22	828059	Actuator, Switch	65	823351	Screw, Blade (Use W/Key 59 Only)
23	828060	Button, Lock	66	830016	Wrap, Cord Front
24	828061	Spring, Torsion	67	830124-2	* Screw, Pan Hd M5 x 15
25	830039	Handle, Upper	68	830017	Wrap, Cord Rear
26	830123	Screw, Sems M5 x 32	69	830124-3	* Screw, Pan Hd M5 x 20
27	828122	Screw, Wash Hd Plastite M4-14	70	830036	Cover, Belt
28	828063	Handle, Carry	71	830124-2	* Screw, Pan Hd M5 x 15
29	830123-1	Screw, Sems M5 x 75	72	829994	Indicator, Bevel
30	830035	Cover, Cord	73	829995	Indicator, Miter
31	830124	* Screw, Pan Hd M5 x 35	74	830130-1	Screw, Sems Pn Cr L+F Wash M4 x 8
32	816755-3	* Screw, Pan Cr M5 x 0.8-12	75	829989	Insert, Table
33	816725	Clamp, Cord	76	816755-10	* Screw, Pan Cr M5 x 8
34	830264	Sleeve, Cord	77	830079	Clamp Asm
35	830125	Clip, Cord	78	830077	Bag Dust Asm
36	830148	Strain Relief	79	SP6505	Owners, Manual
37	830026	Pulley, Motor	80	SP6505S	Owners, Manual, Spanish
38	830033	Pulley, Pinion	81	SP6505F	Owners, Manual, French
39	821063	* Washer 8 x 23 x 2	82	830076	Frame, Dust Bag
40	813303-7	* Lockwasher, M8	83	830078	Elbow, Dust
41	820236-7	* Nut, Hex Lock M8 x 1.25 x 6.5	84	830015	Knob, Slide Lock
42	830034	Belt, Poly, Vee			
43	830002	Fence, Lower			

* Standard Hardware Item - May be purchased locally.

‡ CAUTION: See mechanical assembly caution on page 56.

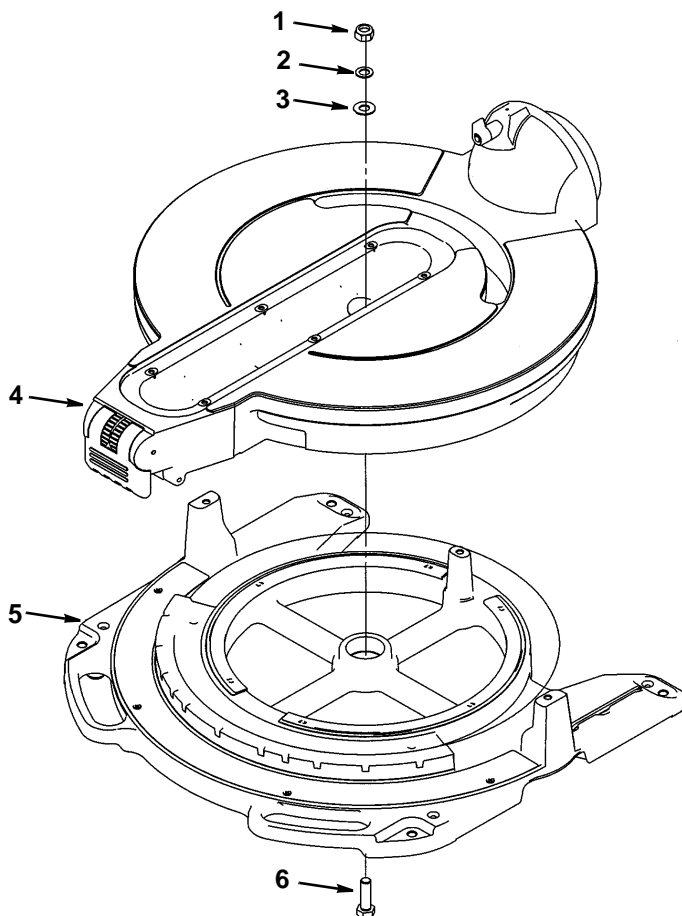
• WARNING: See electrical warning on page 58.

Repair Parts

Parts List For RIDGID 12" Compound Miter Saw Model No. MS1290LZ 0

RIDGID parts are available on-line at www.ridgidparts.com

Figure 2 - Base/Table Assembly



Always order by part number - Not by key number

Key No.	Part No.	Description
1	818656	* Nut, Hex Lock M12 x 1.75
2	830137	* Washer, M12 x 20 x 1.5
3	830138	* Washer, M12 x 25 x 1.5
4	829981	Table Asm (See Fig. 3)
5	830136	Base Asm (See Fig. 4)
6	822072	* Screw Hx Hd M12 x 1.75-40

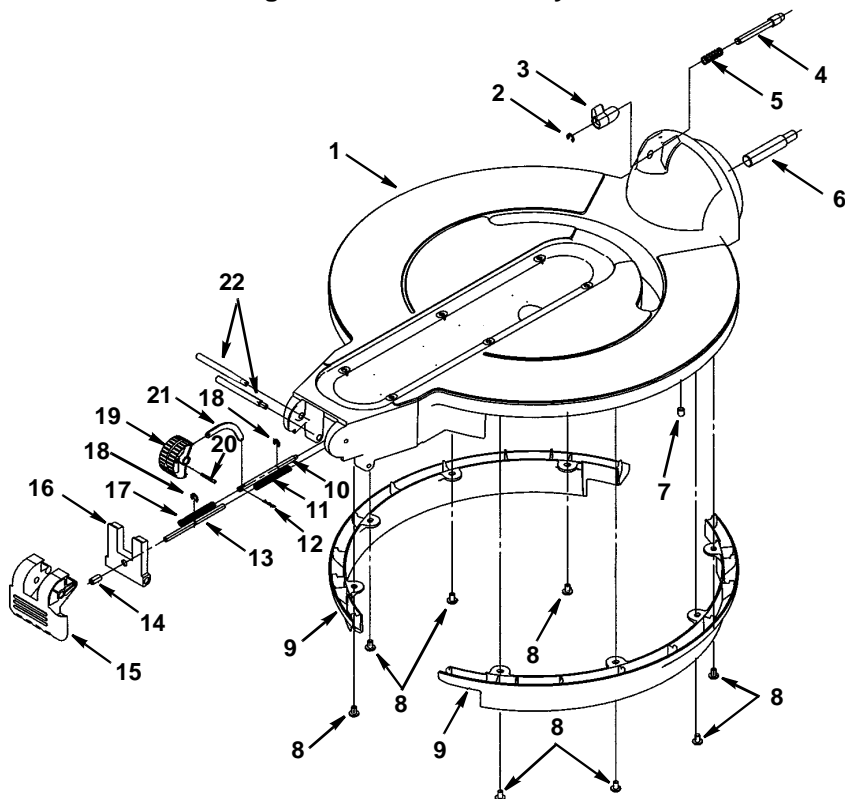
* Standard Hardware Item - May be purchased locally.

Repair Parts

Parts List For RIDGID 12" Compound Miter Saw Model No. MS1290LZ 0

RIDGID parts are available on-line at www.ridgidparts.com

Figure 3 - Table Assembly



Always order by part number - Not by key number

Key No.	Part No.	Description	Key No.	Part No.	Description
1	830280	Table Asm (Includes Key No. 6)	12	830141	Pin, Roll R6
2	829984-1	Ring, Retaining	13	829985	Pin, Miter Lock
3	829992	Lever, Bevel Index	14	827449	Screw, Set Lock
4	829990	Pin, Bevel Index	15	829988	Lever, Miter Lock
5	829991	Spring	16	829986	Plate, Miter Lock
6	—	Shaft, Pivot	17	829983	Spring
7	827449-1	Screw, Set Lock M8 x 1.25 x 10 Nylock	18	829984	Ring, Retaining
8	820244-2	* Screw, Pan Cr M6 x 1.0 x 10	19	830046	Wheel, Miter Index
9	829982	Skirt, Table	20	830140	Pin, Roll 3 x 25.2
10	830044	Pin, Miter Index	21	830045	Link, Miter Index
11	829983	Spring	22	829987	Screw, Shoulder M6 x 8 x 91

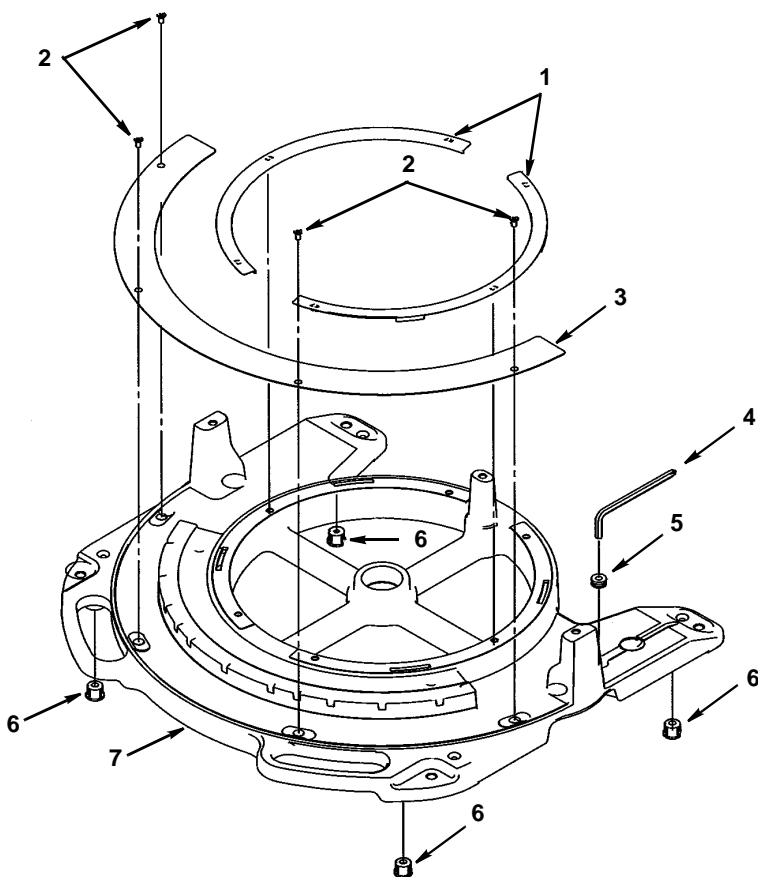
* Standard Hardware Item - May be purchased locally.

Repair Parts

Parts List For RIDGID 12" Compound Miter Saw Model No. MS1290LZ 0

RIDGID parts are available on-line at www.ridgidparts.com

Figure 4 - Base Assembly



Always order by part number - Not by key number

Key No.	Part No.	Description
1	829997	Shim, Table
2	830166	* Screw, Flat M5 x 0.8 x 10
3	829999	Scale, Miter
4	823492	Wrench Hex "L" .25 x 120mm
5	823335	Grommet, Wrench
6	829998	Foot, Rubber
7	829996	Base

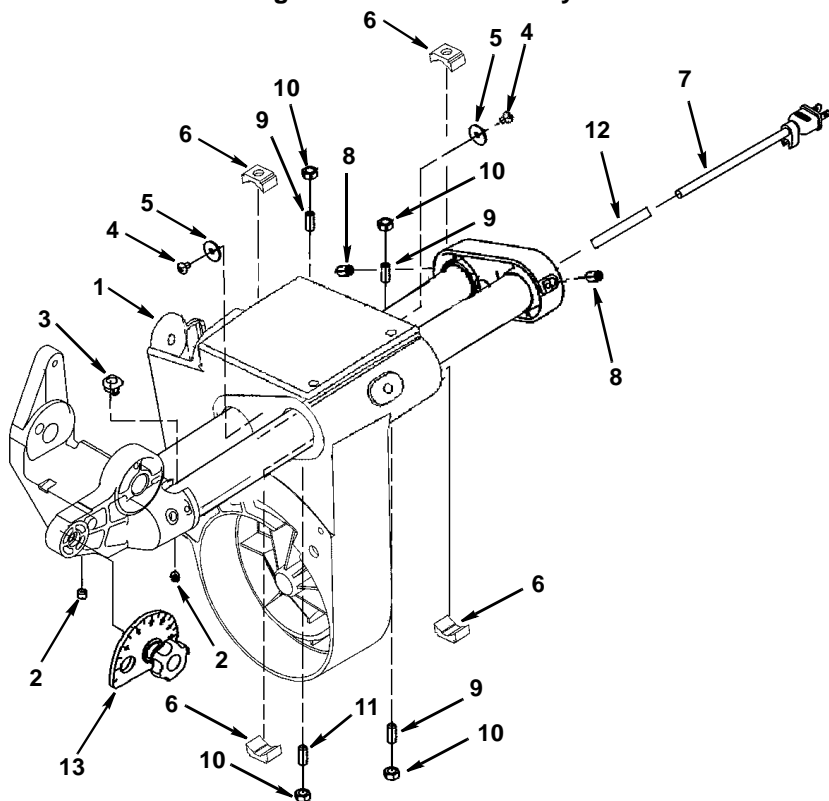
* Standard Hardware Item - May be purchased locally.

Repair Parts

Parts List For RIDGID 12" Compound Miter Saw Model No. MS1290LZ 0

RIDGID parts are available on-line at www.ridgidparts.com

Figure 5 - Pivot Assembly



Always order by part number - Not by key number

Key No.	Part No.	Description	Key No.	Part No.	Description
1	830262	Pivot Asm Only (Other Items Listed on Chart Not Included)	8	830146-1	Screw, Set Lock M8 x 1.25 x 14 Nylock
2	830146	Screw, Set Lock M8 x 1.25 x 6 Nylock	9	830144-1	Screw, Set Lock M8 x 1.25 x 20
3	830147	Guard, Cord	10	824026-7	* Nut, Hex M8 x 1.25
4	830145	Screw, Shoulder M5	11	830144	Screw, Set Lock M8 x 1.25 x 25
5	830053	Washer, Rubber	12	830264-1	Sleeve, Cord
6	830048	Glide Tube	13	—	Tube Pivot Asm (See Fig. 6)
7	830038	• Cord w/Plug			

* Standard Hardware Item - May be purchased locally.

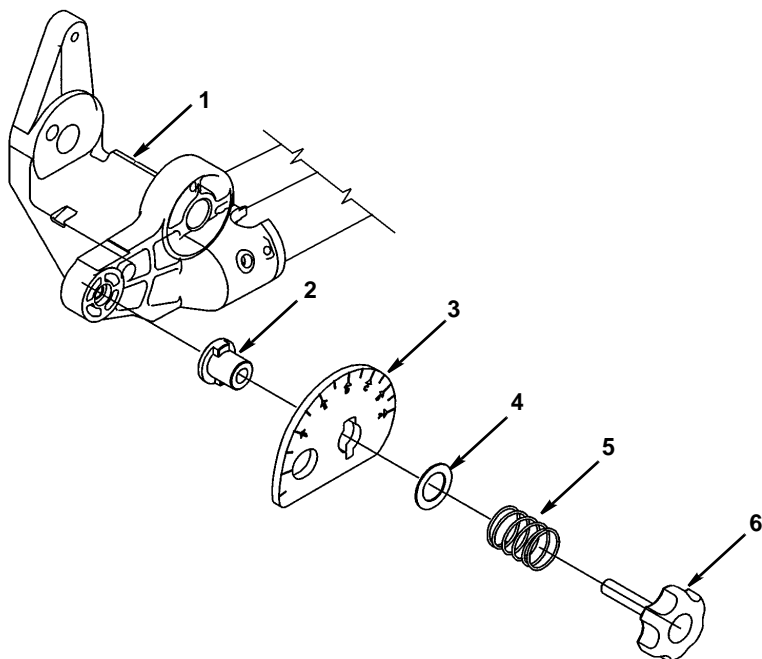
• WARNING: See electrical warning on page 54.

Repair Parts

Parts List For RIDGID 12" Compound Miter Saw Model No. MS1290LZ 0

RIDGID parts are available on-line at www.ridgidparts.com

Figure 6 - Tube Pivot Assembly



Always order by part number - Not by key number

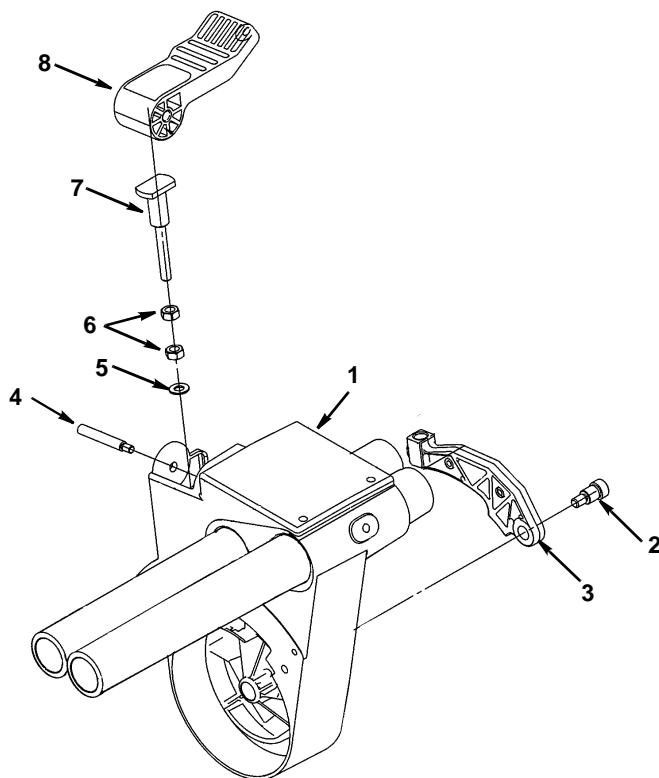
Key No.	Part No.	Description
1	—	Pivot Asm. (See Fig. 5)
2	830018	Bearing, Flange Down Stop
3	830019	Eccentric, Plate
4	830149	* Washer, 0.63 x 25 x 1/32
5	830020	Spring
6	830021	Knob, Down Stop

* Standard Hardware Item - May be purchased locally.

Parts List For RIDGID 12" Compound Miter Saw Model No. MS1290LZ 0

RIDGID parts are available on-line at www.ridgidparts.com

Figure 7 - Pivot Sub Assembly



Always order by Part Number - Not by Key Number

Key No.	Part No.	Description
1	—	Pivot Asm. (See Fig. 5)
2	830151	Screw, Shoulder M6
3	830010	Clamp, Bevel
4	830011	Screw, Shoulder M8 x 1.25 x 58.5
5	821063-7	* Washer, 8 x 16 x 1.2
6	820236-7	* Nut, Hex M8 x 1.25
7	830012	Plunger, Bevel Lock
8	830013	Lever, Bevel Lock

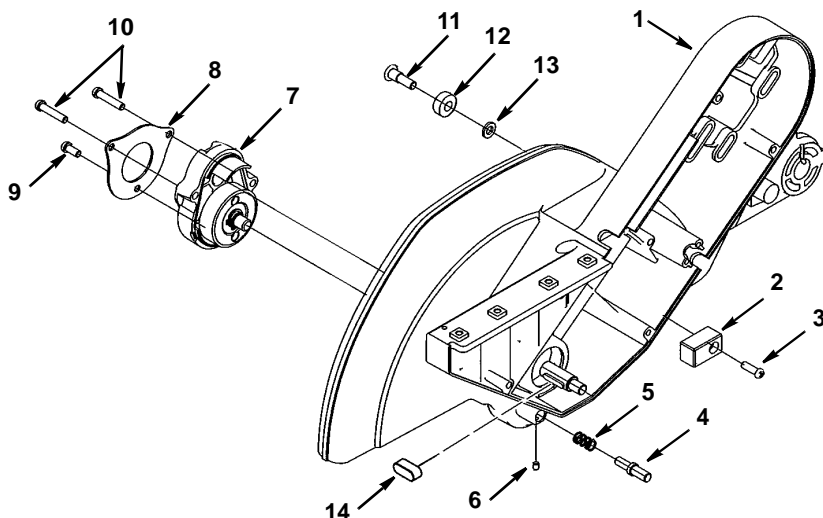
* Standard hardware item - May be purchased locally.

Repair Parts

Parts List For RIDGID 12" Compound Miter Saw Model No. MS1290LZ 0

RIDGID parts are available on-line at www.ridgidparts.com

Figure 8 - Arm Guard Assembly ‡



Always order by part number - Not by key number

Key No.	Part No.	Description
1	830225	Arm Guard Asm
2	823360	Bumper, Lower Guard
3	816755-6	Screw, Pan Cr M5 x 16
4	830029	Pin, Arbor Lock
5	830030	• Spring
6	830155	Screw, Set Lock M4 x 5 Nylock
7	830031-2	Arbor Asm

Key No.	Part No.	Description
8	830032	Retainer Bearing
9	830154-1	Screw, Sems M5 x 12
10	830154	Screw, Sems M5 x 25
11	821875-1	* Screw M6 x 1.0-14
12	821862	Bearing
13	820238-2	* Washer M6 x 12 x 1.6
14	830027	Key 4 x 4 x 20

* Standard hardware item - May be purchased locally.

‡ CAUTION: See Mechanical Assembly Caution below.

• **WARNING:** Uncontrolled spring release or misinstallation of these parts may create a Hazard unless repair is done by a qualified service technician.

CAUTION: Mechanical Assembly, to qualified service technician.

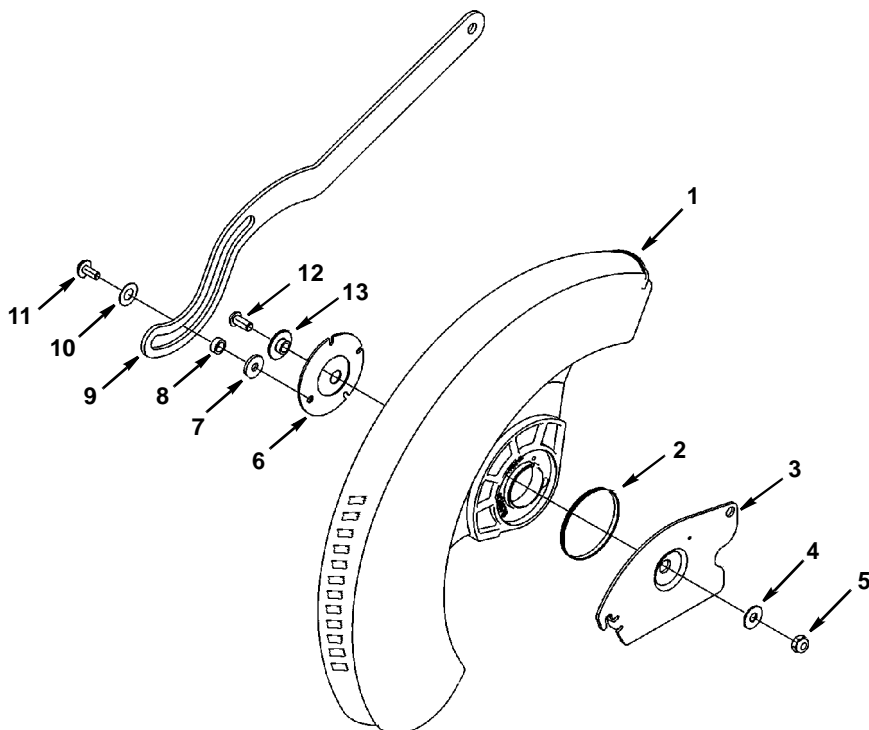
1. Wear approved eye protection when working with coil springs including spring, arbor lock 830030.
2. Incorrect re-assembly of torsion spring 830111 can cause an unsafe condition because cutting head fails to rise fully to stop, or because spring fails through over-stress.
3. Improper reassembly of mechanisms controlling movement of lower guard 830059 can cause an unsafe condition because guard fails to operate freely as cutting head is moved up and down.

Repair Parts

Parts List For RIDGID 12" Compound Miter Saw Model No. MS1290LZ 0

RIDGID parts are available on-line at www.ridgidparts.com

Figure 9 - Lower Guard Assembly ‡ •



Always order by part number - Not by key number

Key No.	Part No.	Description
1	830530	• Guard, Lower
2	816677	• Spring, Guard
3	830529	Pivot, Lower Guard
4	820238-8	Washer 1/4 x 16
5	817449-1	* Nut, Hex Lock M6 x 1.0
6	826879	Retainer, Guard
7	820732-2	* Washer 5.5 x 16 x 0.8

Key No.	Part No.	Description
8	820725-01	Spacer
9	830041	Link, Actuator
10	820732-1	* Washer 7.5 x 16 x 0.6
11	820724	Screw, Shoulder M5
12	828142	* Screw, Flat Cr M6 x 13
13	827409	Bearing, Retainer

* Standard Hardware Item - May be purchased locally.

‡ CAUTION: See mechanical assembly caution on page 52.

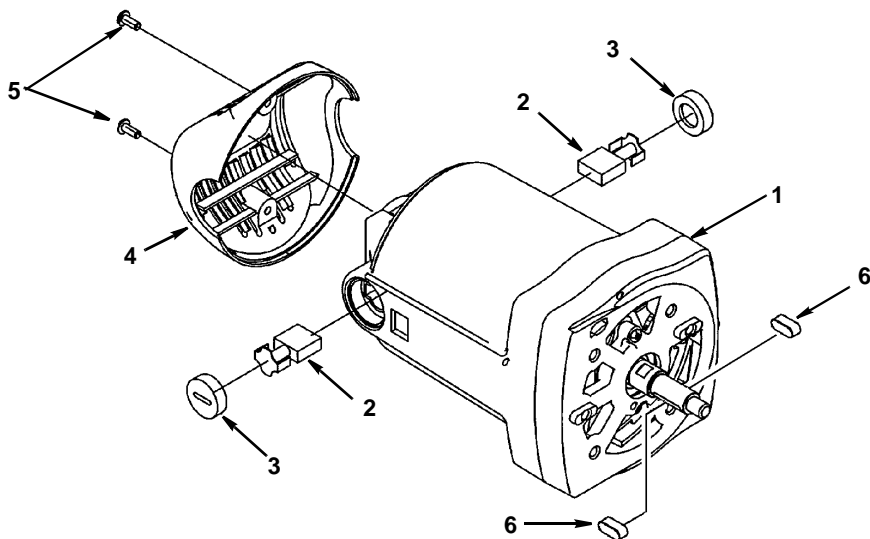
• WARNING: See warning on page 56.

Repair Parts

Parts List For RIDGID 12" Compound Miter Saw Model No. MS12900

RIDGID parts are available on-line at www.ridgidparts.com

Figure 10 - Motor Assembly •

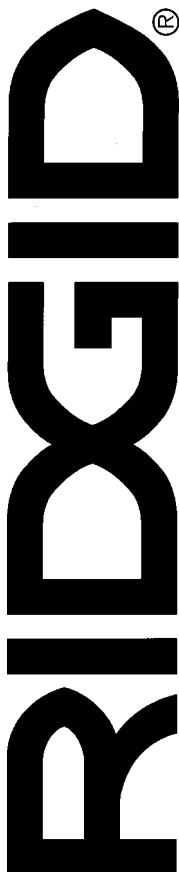


Always order by part number - Not by key number

Key No.	Part No.	Description
1	830253	Motor (Includes Key Nos. 2, 3, 4, 5)
2	816768	Brush
3	830250	Cover, Brush
4	828064	Cover, Rear Motor
5	828122-1	Screw, Wash Hd Cr M4-10
6	830027	Key 4 x 4 x 20

• **WARNING:** Any attempt to repair or replace electrical parts on this unit may create a hazard unless repair is done by a qualified service technician.

WARNING: For your safety, this miter saw is specially insulated. To reduce the risk of electrical shock, fire or injury, use only parts identical to those identified in the parts list. Reassemble exactly as originally assembled.



**RIDGID® HAND HELD AND STATIONARY POWER TOOL
LIMITED THREE YEAR WARRANTY AND
90 DAY SATISFACTION GUARANTEE POLICY**

This product is manufactured under license from Ridgid, Inc. by One World Technologies, Inc.. All warranty communications should be directed to One World Technologies, Inc. at (toll free) 1-866-539-1710.

90-Day Satisfaction Guarantee Policy

During the first 90 days after the date of purchase, if you are dissatisfied with the performance of this Ridgid® tool for any reason, you may return the tool to the dealer from which it was purchased for a full refund or exchange. To receive a replacement tool you must present proof of purchase and return all original equipment packaged with the original product. The replacement tool will be covered by the limited warranty for the balance of the three year warranty period.

What is covered under the Limited Three Year Warranty

This warranty covers all defects in workmanship or materials in this RIDGID® tool for the three year period from the date of purchase. This warranty is specific to this tool. Warranties for other RIDGID® products may vary.

How to obtain service

To obtain service for this RIDGID® tool you must return it, freight prepaid, to an authorized RIDGID® service center for hand held and stationary power tools. You may obtain the location of the authorized service center nearest you by calling (toll free) 1-866-539-1710 or by logging on to the RIDGID® website at www.ridgidwoodworking.com. When requesting warranty service, you must present the proof of purchase documentation, which includes a date of purchase. The authorized service center will repair any faulty workmanship, and either repair or replace any defective part, at our option at no charge to you.

What is not covered

This warranty applies only to the original purchaser at retail and may not be transferred. This warranty only covers defects arising under normal usage and does not cover any malfunction, failure or defect resulting from misuse, abuse, neglect, alteration, modification or repair by other than authorized RIDGID® service center for hand held and stationary power tools. One World Technologies, Inc. makes no warranties, representations or promises as to the quality or performance of its power tools other than those specifically stated in this warranty.

Additional Limitations

To the extent permitted by applicable law, all implied warranties, including warranties of MERCHANTABILITY or FITNESS FOR A PARTICULAR PURPOSE, are disclaimed. Any implied warranties, including warranties of merchantability or fitness for a particular purpose, that cannot be disclaimed under state law are limited to three years from the date of purchase. One World Technologies, Inc. is not responsible for direct, indirect, incidental or consequential damages. Some states do not allow limitations on how long an implied warranty lasts and/or do not allow the exclusion or limitation of incidental or consequential damages, so the above limitations may not apply to you. This warranty gives you specific legal rights, and you may also have other rights which vary from state to state.

Catalog No. MS1290LZ

Model No. MS1290LZ0 Serial No. _____

The model and serial numbers may be found on a plate attached to the saw at the rear of the miter saw base. You should record both model and serial number in a safe place for future use.

QUESTIONS OR COMMENTS?

CALL 1-866-539-1710

www.ridgidwoodworking.com

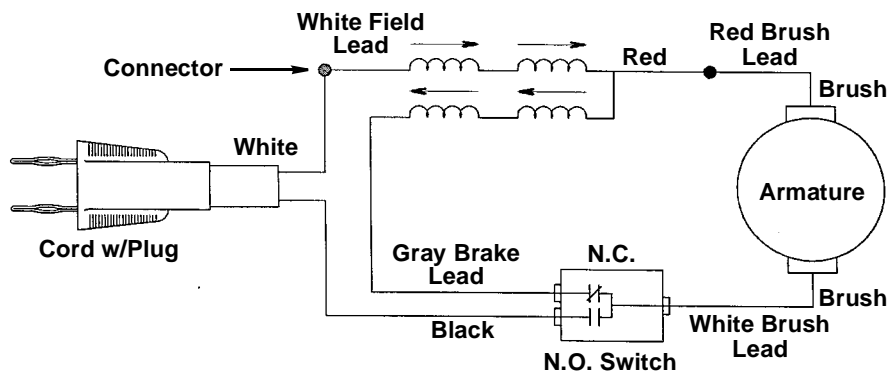
**Please have your Model Number and Serial
Number on hand when calling.**

Troubleshooting Guide (continued)

Motor

Problem	Probable Cause	Suggested Corrective Action
Brake does not stop blade within 6 seconds.	<ol style="list-style-type: none"> 1. Brushes not seated or lightly sticking. 2. Motor brake winding overheated from use of prohibited accessory or rapid on/off cycling. 3. Arbor screw loose. 4. Other 	<ol style="list-style-type: none"> 1. Inspect/clean/replace brushes. See "Maintenance" section. 2. Use only recommended blades/accessories. Let motor cool down. 3. Retighten 4. Get authorized service. See "Troubleshooting of brake" section.
Motor does not start.	<ol style="list-style-type: none"> 1. Fuse. 2. Brushes worn. 3. Other. 	<ol style="list-style-type: none"> 1. Check fuse, or circuit breaker. 2. See "Maintenance" section. 3. Get authorized service.
Brush sparking when switch released.	<ol style="list-style-type: none"> 1. Normal automatic brake working properly. 	<ol style="list-style-type: none"> 1. None

Wiring Diagram



Trouble Shooting of Brake by Qualified Service Person Only

1. Check commutation at no load. If there is a heavy sparking which follows the curvature of the commutator: replace the armature.
2. To continue trouble shooting, now unplug the power cord.
3. Install service brushes, especially if delayed come-in of brake has been noticed before failure.
4. Check brake circuit for continuity: remove brush caps and brushes. Use ohmmeter to check continuity from brass brush holder to brush holder. If open, locate exact place using ohmmeter. As indicated by test, tighten connection or replace field assembly or replace switch.
5. After repair, check direction of blade rotation vs. guard arrow.