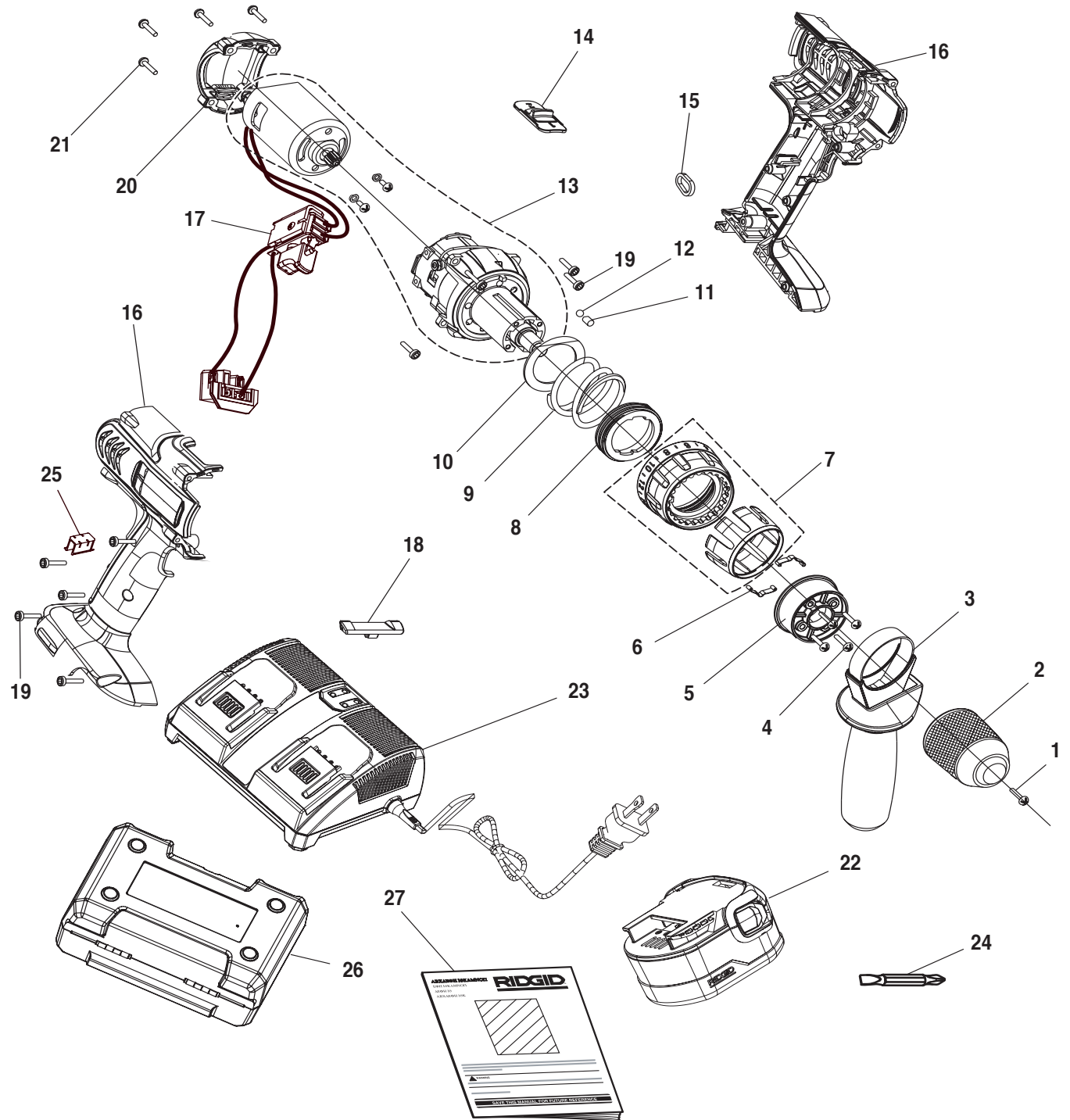


**KEY P/N QTY**

1	660134002	1
2	680301005	1
3	300188013	1
4	660206018	4
5	640635002	1
6	630207005	2
7	984983-001	1
8	511452001	1
9	680095003	1
10	680403003	1
	630748002	1
	630748003	1
	630748004	1
11	680435006	8
12	670219001	8
13	984981-001	1
14	341453001	1
15	690164002	1
16	984982-001	1
17	270016072	1
18	511454001	1
19	660024007	9
20	511459001	1
21	660024009	4
22	130254002	2
23	140276002	1
24	670820066	1
25	630206001	1
26	300912011	1
27	983000-303	1
	7-03	



▲ **WARNING:** The assembly shown represents an important part of the Double Insulated System. To avoid the possibility of alteration or damage to the System, service should be performed by your nearest authorized service center.

▲ **AVERTISSEMENT :** L'ensemble illustré représente une partie importante du système à isolation double. Afin d'éviter la possibilité de modification ou de dommage au système, la réparation ne doit être effectuée que par votre centre de réparation centre commercial autorisé.

▲ **ADVERTENCIA:** El conjunto que se ilustra representa una parte importante del Sistema de Aislamiento Doble. Para evitar la posibilidad de alteración o daño del sistema, la reparación debe ser efectuada en su centro de servicio autorizado.

**REPLACEMENT PARTS PRICING SHEET**

**RIDGID**

**MODEL: R83015**

**Description of Tool: 14.4 VOLT 2-SPEED DRILL**

KEY	PART #	DESCRIPTION	LIST PRICE
1	660134002	SCREW (M6X1.0X27MM) LH	0.41
2	680301005	CHUCK - HT 1/2" W/LOCK	65.12
3	300188020	AUXILIARY HANDLE ASSEMBLY	7.70
3-1	660063002	ADJUSTMENT SCREW M6X100MM	0.50
3-2	640667001	SPRING PLATE CARRIER	3.07
3-3	511483002	HAND PUSHER	0.38
3-4	511458002	HANDLE BRACKET	0.66
3-5	680491002	WASHER	0.38
3-6	300067091	HANDLE HOUSING	1.87
3-7	631113001	SPRIJG PLATE	1.10
4	660206018	SCREW (M3.5 PH B/L=15MM)	0.38
5	640670001	CASTING, SPRING PLATE HOLDER	2.12
6	630207005	SPRING PLATE	0.38
7	984983001	CLUTCH CAP ASSEMBLY	3.03
8	511452001	PLASTIC SLEEVE	0.38
9	680095003	TORQUE CONTROL SPRING	0.38
10	680403003	CLUTCH WASHER	0.38
	630748002	CLUTCH CAP WASHER	0.49
	630748003	CLUTCH CAP WASHER	0.38
	630748004	CLUTCH CAP WASHER	0.38
11	680338006	CLUTCH PIN	0.38
12	670219001	BALL (DIA 5)	0.38
13	984981001	MOTOR W/GEARTRAIN ASSY	83.28
14	341453001	GEAR CHANGE BUTTON	0.38
15	690164002	STRIP RING	0.38
16	984982001	HOUSING ASSEMBLY	8.79
17	270016072	SWITCH ASSEMBLY	34.38
18	511454001	BUTTON, FORWARD/REVERSE	0.38
19	660024007	SCREW (M4X16MM)	0.38
20	511459001	HOUSING END CAP	1.10
21	660024009	SCREW (M4X20MM)	0.38
22	130254002	BATTERY PACK - 14.4VDC	80.29
23	140276002	DUAL PORT CHARGER	128.17
24	670820066	BIT, DBL. ENDED, HC STEEL	0.47
25	630206001	BIT CLIP	0.38
26	300912011	CARRYING CASE - R83015	11.26
27	983000303	OPERATORS MANUAL	1.02
28	660211028	M SCREW 3.5X10MM	0.38
29	640664001	CASTING, HANDLE MOUNTING	3.14
	Oct-03	r sheet date	