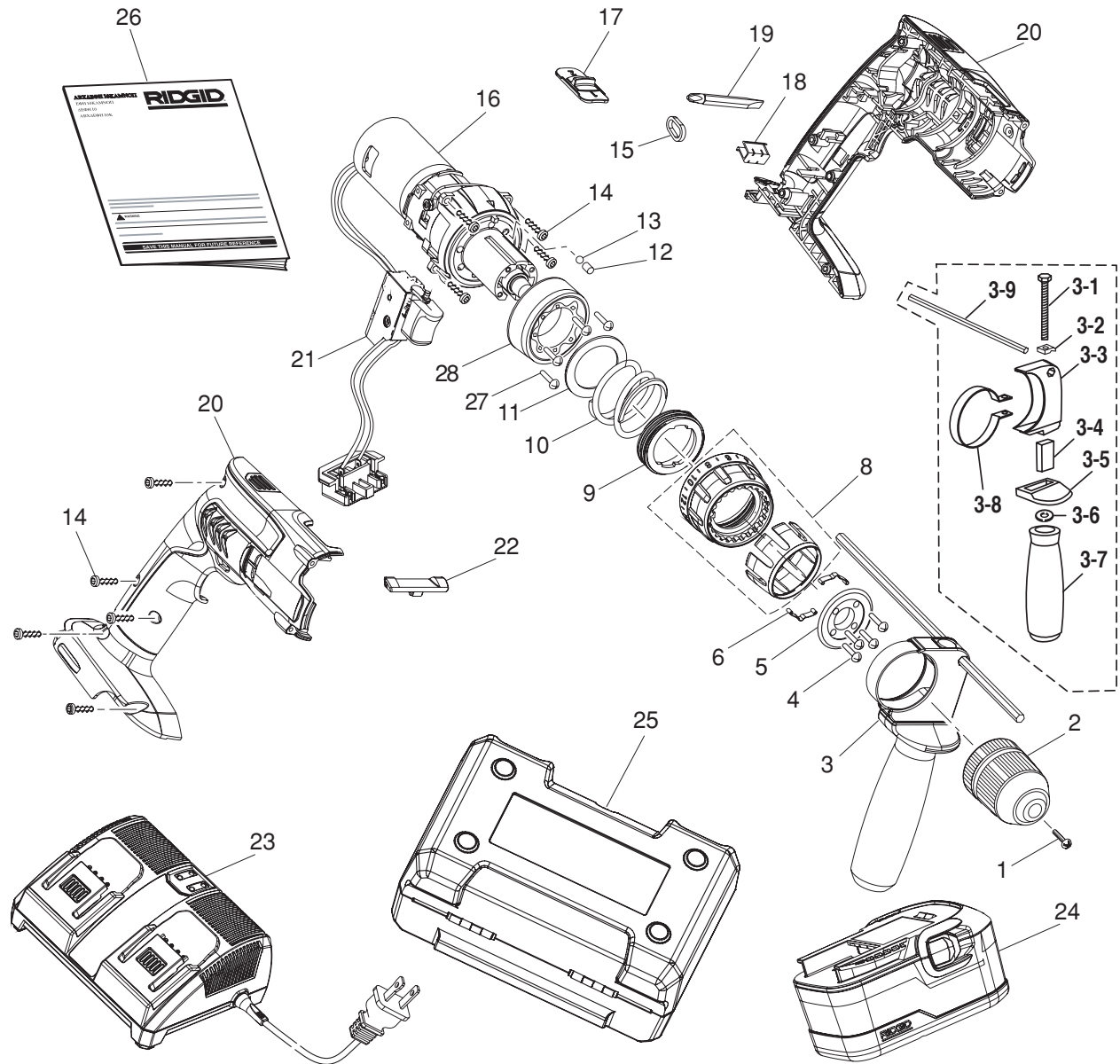


KEY	P/N	QTY	KEY	P/N	QTY
1	660134002	1	12	680338007	8
2	680301004	1	13	670219001	8
3	300188021	1	14	660024007	9
3-1	660063002	1	15	690164002	1
3-2	630411003	1	16	985102-001	1
3-3	640668001	1	17	341453002	1
3-4	511483002	1	18	630206001	1
3-5	511458002	1	19	670820066	1
3-6	680491002	1	20	985103-001	1
3-7	300067091	1	21	270018005	1
3-8	631114001	1	22	511676001	1
3-9	630412004	1	23	140276002	1
4	660206031	4	24	130254003	2
5	640670001	1	25	300912013	1
6	630207005	2	26	983000-358	1
8	984991-001	1	27	660211028	4
9	511452001	1	28	640665001	1
10	680095003	1		10-03	1
11	680403003	1			
	630748002	1			
	630748003	2			
	630748004	1			



**⚠ WARNING:** The assembly shown represents an important part of the Double Insulated System. To avoid the possibility of alteration or damage to the System, service should be performed by your nearest authorized service center.

**⚠ AVERTISSEMENT :** L'ensemble illustré représente une partie importante du système à isolation double. Afin d'éviter la possibilité de modification ou de dommage au système, la réparation ne doit être effectuée que par votre centre de réparation centre commercial autorisé.

**⚠ ADVERTENCIA:** El conjunto que se ilustra representa una parte importante del Sistema de Aislamiento Doble. Para evitar la posibilidad de alteración o daño del sistema, la reparación debe ser efectuada en su centro de servicio autorizado.

**REPLACEMENT PARTS PRICING SHEET**

**MODEL:** R841151

**RIDGID**

**DESCRIPTION OF TOOL:** 18VDC HAMMER DRILL

KEY	PART NO	DESCRIPTION	LIST PRICE
1	660134002	SCREW (M6X1.0X27MM) LH	
2	680301004	CHUCK - HT 1/2" W/LOCK	
3	300188021	AUXILARY HANDLE ASSY	
3-1	660063002	ADJUSTMENT SCREW M6X10MM	
3-2	630411003	SPCC SQUARE WASHER	
3-3	640668001	SPRING PLATE CARRIER	
3-4	511483002	HANDLE PUSHER	
3-5	511458002	HANDLE BRACKET	
3-6	680491002	WASHER	
3-7	300067091	HANDLE HOUSING	
3-8	631114001	SPRING PLATE	
3-9	630412004	DEPTH GAGE ROD	
4	660206031	SCREW (M3.5 X 15MM)	
5	640670001	CASTING, SPRING PLATE HOLDER	
6	630207005	SPRING PLATE	
7	630412004	DEPTH GAGE ROD	
8	984991001	CLUTCH CAP ASSEMBLY	
9	511452001	PLASTIC SLEEVE	
10	680095003	TORQUE CONTROL SPRING	
11	680403003	CLUTCH WASHER	
	630748002	CLUTCH CAP WASHER	
	630748003	CLUTCH CAP WASHER	
	630748004	CLUTCH CAP WASHER	
12	680338007	CLUTCH PIN	
13	670219001	BALL (DIA 5)	
14	660024007	SCREW (M4X16MM)	
15	690164002	STRIP RING	
16	985102001	MOTOR W/GEAR TRAIN ASSY	
17	341453002	GEAR CHANGE BUTTON	
18	630206001	BIT CLIP	
19	670820066	BIT, DBL. ENDED,	
20	985103001	HOUSING COVER	
21	270018005	SWITCH ASSEMBLY	
22	511676001	BUTTON, FORWARD/REVERSE	
23	140276002	DUAL PORT CHARGER	
24	130254003	BATTERY PACK	
25	300912013	CARRYING CASE	
26	983000358	OPERATORS MANUAL	
27	660211028	M SCREW 3.5X10MM	
28	640665001	CASTING, HANDLE MOUNTING	
	Oct-03	r sheet date	