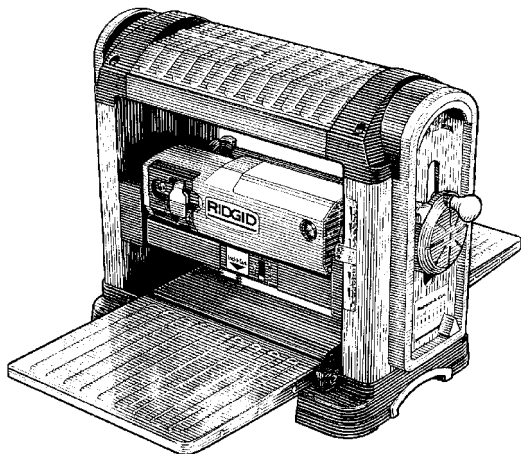


RIDGID®

TP1300 OWNERS MANUAL



13 INCH THICKNESS PLANER WITH LEGSET

Call Us 1st

For any questions about:

- Operation
- Warranty (See back cover)
- Technical Assistance
- Repair Parts

Please have your Model Number and Serial Number on hand when calling.

1-800-4-RIDGID

RIDGID Parts.com

POWER TOOL PARTS
& ACCESSORIES

For Your Safety:
Read all instructions carefully
Save this manual for future
reference

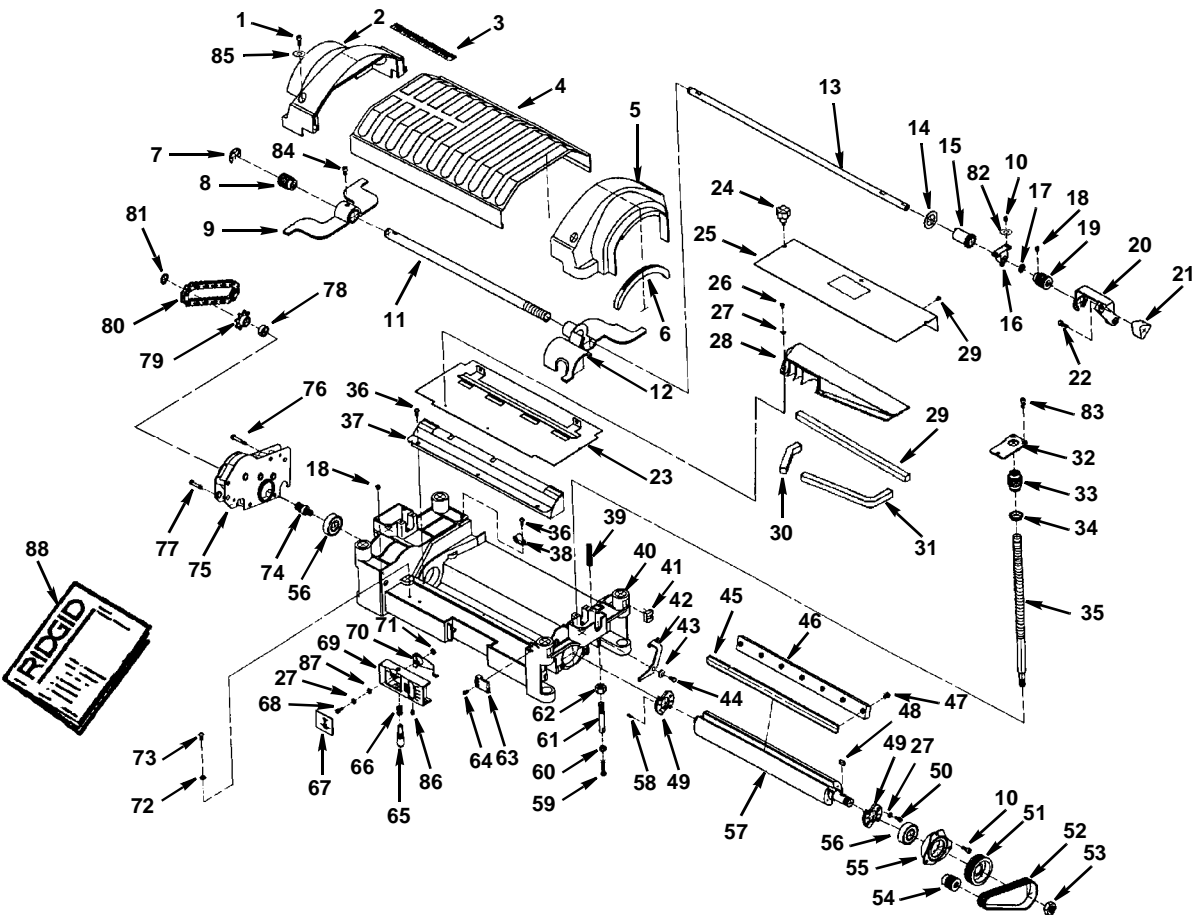
Repair Parts

Parts List for 13" Thickness Planer

Model No. TP13002

RIDGID parts are available on-line at www.ridgidparts.com

Figure 1



Repair Parts

Parts List for 13" Thickness Planer

Model No. TP13002

RIDGID parts are available on-line at www.ridgidparts.com

Figure 1

Always order by Part Number - Not by Key Number

Key No	Part No.	Description	Key No	Part No.	Description
1	820380-6	Scr Hex Soc Butt Hd M6 x 1.0-20	46	827711	Bar Knife Lock
2	827681	Cap Left	47	827785	Screw Knife Lock
3	827713	Scale Length	48	818654-9	*Key 5 x 12mm
4	827841	Cover Upper	49	827714	Collar Knife
5	827682	Cap Right	50	818469-6	*Scr Hex Soc Cap M4 x 0.75-8
6	827741	Pad Upper	51	827787	Pulley Cutter head
7	817453-1	Ring Retaining C17	52	827793	Belt Drive
8	827769	Worm Gear L.H.	53	827788	Nut Hex M6 x 2.0 L.H.
9	827720	Plate Lock Left	54	827789	Pulley Motor
10	820379-6	*Scr Hex Soc Cap M5 x 0.8-12	55	827786	Retainer Bearing
11	827717	Sleeve	56	820722-5	Bearing Ball 6203ZZ
12	827719	Plate Lock Right	57	827680	Head Cutter (Includes Collar knife, Retainer Bearing, Bear- ing Ball and Gear Pinion)
13	827726	Shaft Transmission	58	813249-76	Pin Spring 3 x 8mm
14	827766	Washer 21.5 x 24 x 1	59	821151-4	*Screw Hex Hd M5 x 0.8-26
15	827724	Nut Lock M17 x 2.0	60	813164-6	*Nut Hex M5 x 0.8
16	827754	Support	61	827729	Rod Step
17	827721	*Washer 12 x 16 x 1	62	827817	Nut Special M10 x 1.5
18	821065-2	*Scr Soc Set Cup Pt M5 x 0.8-8	63	827739	Indicator Depth
19	827723	Worm Elevation	64	820401-2	Scr Pan Hd M3 x 0.5-16
20	827699	Handle	65	827733	Rod Pointer Elevating
21	827716	Knob Snipe	66	827734	Spring Coil 8.5X19X0.8
22	820379-9	*Scr Hex Soc Cap M5 x 0.8-10	67	827746	Cover Pointer
23	827695	Chute Dust	68	813312	Scr Pan Cr M4 x 0.75-10
24	827753	Knob Chute	69	827701	Housing Pointer
25	827926	Cover Shroud	70	827732	Pointer
26	813312-6	*Scr Pan Hd M4 x 0.75-6	71	827762	Nut
27	821102-1	*Washer 4.2 x 10 x 0.9	72	813314-8	Lockwasher Ext Tooth M5
28	827697	Manifold Air	73	820257-1	Scr Pan Hd TY TT M5 x 0.8-8
29	827932	Gasket Rear	74	827784	Gear Pinion
30	827930	Gasket Right	75	828677	Gear Box Asm
31	827931	Gasket Left	76	820379-8	*Scr Hex Soc Cap M5 x 0.8-35
32	827750	Cover	77	820379-5	*Scr Hex Soc Cap M5 x 0.8-30
33	827770	Worm Gear R.H.	78	827773	Spacer 15 x 20 x 7
34	827759	Bushing	79	827772	Sprocket
35	827768	Screw Elevating R.H.	80	827794	Chain
36	820240-3	*Scr Pan Hd M5 x 0.8-6	81	817453-4	Ring Retaining Ext STW15
37	827704	Plate Dust Chute	82	820383-4	Lockwasher M5
38	827767	Clamp Cord	83	828027-1	Scr Hex Soc Hd Lock M5
39	827738	Spring /Plunger	84	828027	Scr Hex Soc Hd Lock M5x0.8-12
40	827678	Frame Upper	85	820383-5	Lockwasher M6
41	827725	Block Support	86	821065-1	Scr Soc Set Cup Pt M5 x 0.8-5
42	827751	Lock Cutter Head	87	827763	Bushing 4.2 x 11 x 3
43	827737	Spacer Cutter Head Lock	88	SP6452	Owners Manual
44	820240-6	*Scr Pan Hd M5 x 0.8-12			
45	AC8630	†Knife Planer			

* Standard Hardware Item - May be purchased locally.

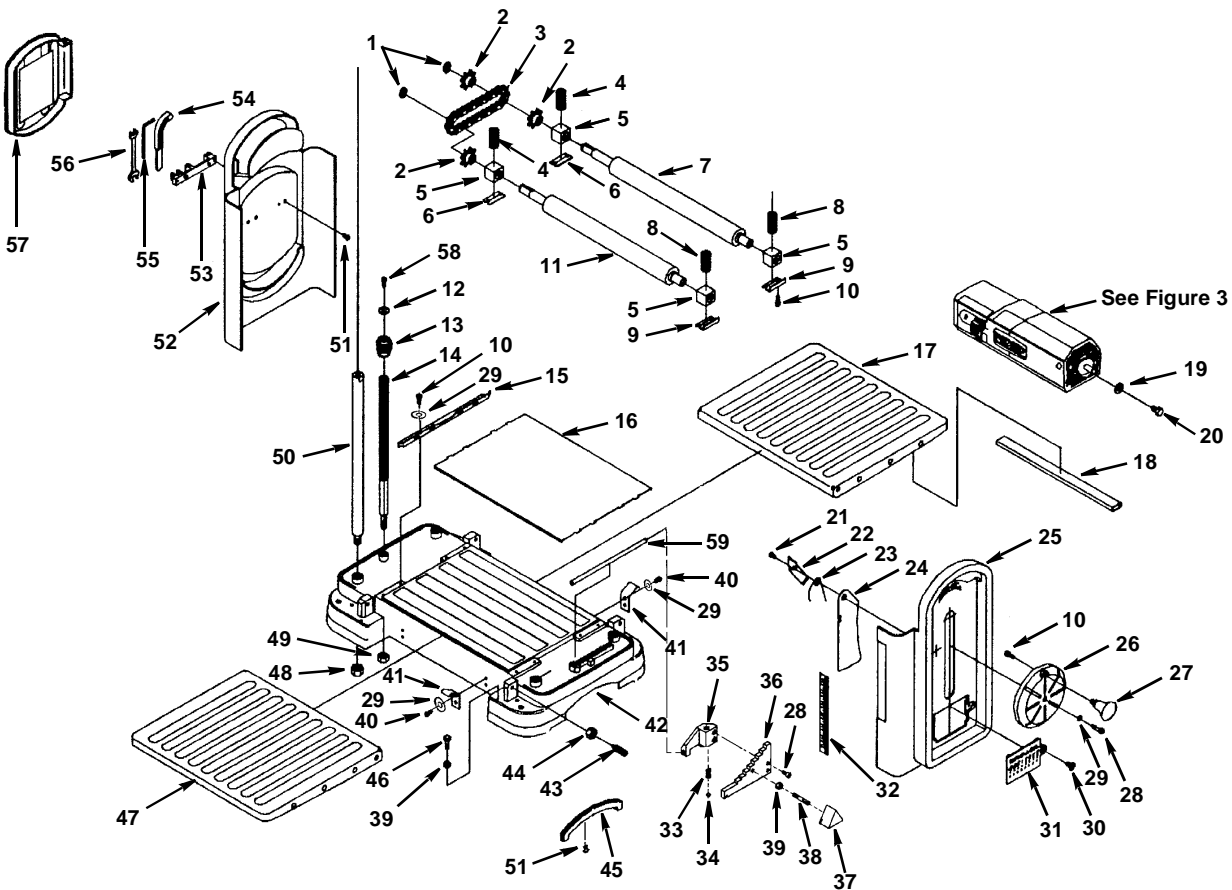
† These replacement parts are available where you purchased your Planer.

Parts List for 13" Thickness Planer

Model No. TP13002

RIDGID parts are available on-line at www.ridgidparts.com

Figure 2



Key No	Part No.	Description
31	827703	Cover Side RH
32	827715	Scale Thickness
33	827760	Spring Coil 7.62x15.75x0.7
34	823742-1	Ball Steel
35	827698	Block Guard
36	827700	Block Step
37	827743	Knob Step
38	827730	Pin Step Block
39	813164-7	* Nut Hex M6 x 1.0
40	820240-1	* Scr Pan Hd M5 x 0.8-10
41	827736	Spring Flat
42	827677	Base
43	827752	Bolt Adjustment
44	827817	Nut Hex Special M10 x 1.5
45	827742	Pad Base
46	821388-3	* Scr Hex M6 x 1.0-25
47	828028	Table Front
48	813164-10	* Nut Hex M12 x 1.75
49	817449-4	Nut Lock M10 x 1.5
50	827718	Rod Support
51	820257-1	* Scr Pan Hd Ty "TT" M5 x 0.8-8
52	827684	Cover Side Left
53	827771	Holder Tool
54	827748	Tool Knife
55	827757	* Wrench Hex "L" 4mm
56	827756	Wrench Box M8 & M10
57	827927	Cover Tool Box
58	820379-1	Scr Hex Soc Cap M5x0.8-8
59	827728	Rod Pivot

Key No	Part No.	Description
1	817453-4	Ring Retaining
2	827772	Sprocket
3	827794	Chain
4	827758	Spring Coil Left
5	827790	Block Bearing
6	827791	Plate Retainer Left
7	827693	Roller Outfeed
8	827755	Spring Coil Right
9	827792	Plate Retainer Right
10	820379-9	* Scr Hex Soc Cap M5 x 0.8-10
11	827692	Roller Infeed
12	827765	* Washer 5.5 x 19 x 2
13	827722	Worm Gear L.H.
14	827735	Screw Elevating L.H.
15	827705	Rail Guide
16	827694	Plate Wear
17	827688	Table Rear
18	827764	Case Knife (Knives not included)
19	821063-0	* Washer M8 x 23 x 2
20	813310	* Screw Hex Hd M8 x 1.25-20
21	820257-3	* Scr Pan Hd Ty "TT" M5 x 0.8-6
22	827928	Plate Stiffener
23	827744	Spring Torsion
24	827731	Plate Side Guard
25	827679	Cover Side Right
26	827696	Hub Handwheel
27	827749	Knob Handwheel
28	820379-2	* Scr Hex Soc Cap M5 x 0.8-15
29	820383-4	* Lockwasher M5
30	827929	Screw Hex Soc.FI Hd M6 x 1.0-12

* Standard Hardware Item - May be purchased locally.

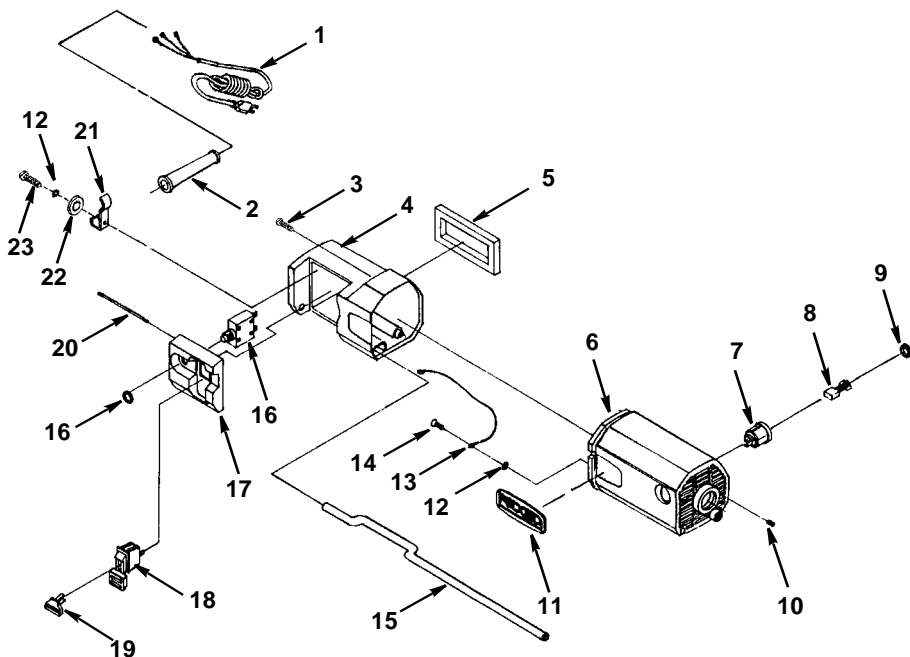
Repair Parts

Parts List for 13" Thickness Planer

Model No. TP13002

RIDGID parts are available on-line at www.ridgidparts.com

Figure 3



Always order by Part Number - Not by Key Number

Key No.	Part No.	Description	Key No.	Part No.	Description
1	827808	Cord w/plug	13	827812	Lead Ground
2	827799	Guard Cord	14	820257-1	* Screw Pan Hd Ty "TT" M5 x 0.8-8
3	820240-7	* Screw Pan Hd M5 x 0.8-20	15	827807	Rod Motor Pivot
4	827689	Housing Switch	16	827806	Switch Reset (Includes Nut)
5	827740	Gasket Foam	17	827708	Bezel Switch
6	827890	Motor	18	826347	Switch Locking
7	827809	(Includes Brushes) Holder Brush	19	AC1000	† Key Switch
8	827811	Brush	20	827797	Screw Special
9	827810	Cap Brush	21	827798	Clamp Cord
10	821065-3	* Screw Hex Soc Set M5 x 0.8-12	22	827765	* Washer 5.5 x 19 x 2
11	826463-4	Label 3D RIDGID	23	820240-5	* Screw Pan Hd M5 x 0.8-30
12	820383-4	* Lockwasher M5			

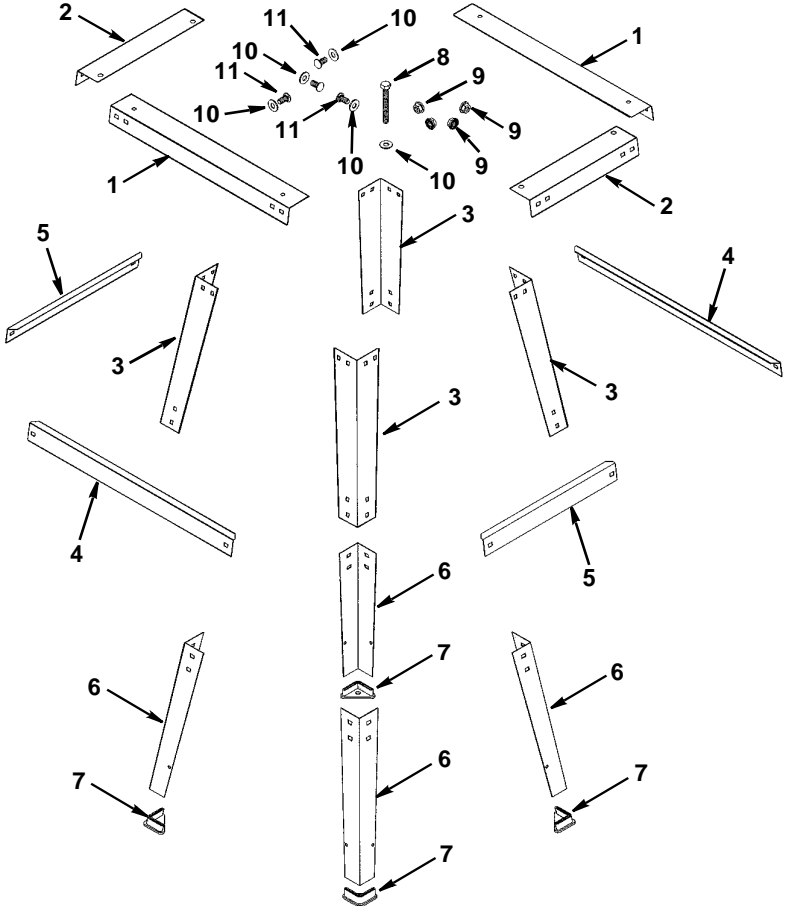
* Standard Hardware Item - May be purchased locally.

† These replacement parts are available where you purchased your Planer.

**Parts List for 13" Thickness Planer
Model No. TP13002**

RIDGID parts are available on-line at www.ridgidparts.com

Figure 4 - Legstand



Always order by Part Number - Not by Key Number

Key No.	Part No.	Description
1	829635	Stiffener Upper Long
2	829636	Stiffener Upper Short
3	829634	Leg Upper
4	829637	Stiffener Lower Long
5	829638	Stiffener Lower Short
6	829633	Leg Lower
7	829632	Foot

Key No.	Part No.	Description
8	813310-10	Screw Hex M8 x 1.25-65
9	829631	Nut Hex Flanged M8 x 1.25
10	821063-2	Washer M8 x 16 x 1.6
11	821103	Bolt Cup Sq Neck M8 x 1.25

* Standard Hardware Item - May be purchased locally

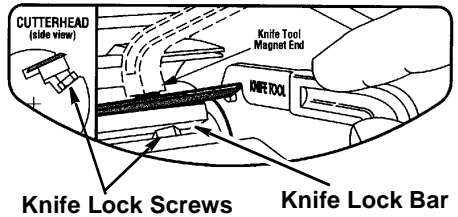
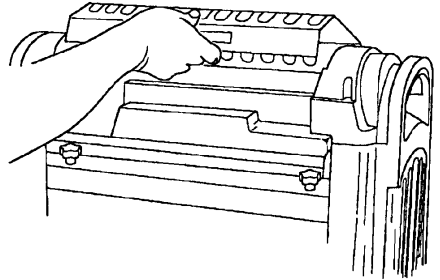
Maintenance (continued)

WARNING: To reduce the risk of thrown blades and other cutter head parts make sure the knife lock bar containing the seven knife lock screws is positioned as shown in the cutter head side view picture.

9. Push the installed knife in firmly. Visually check that the knife edge is parallel to the cutter head slot.
10. Tighten the seven (7) knife locking screws.

NOTE: Move wrench right to left to tighten.
11. To rotate the cutter head to the next knife, release the cutter head lock. Hold down on the red lock lever located on the left side and rotate the cutter head.
12. Release the red lock lever and continue to rotate the cutter head until it locks. This should correctly position the second knife.

13. Repeat procedures 5 through 10 for the second knife.
14. Check that all knife lock screws are tight and reinstall the dust chute.



Accessories

Do not use any accessory unless you have received and read complete instructions for its use.

- Power Tool Universal Legset AC9910
- Dust Collector AC8640
- Replacement Knives AC8630

Wiring Diagram

